



AMARILLO[®]

2024 MEETING PLANNER GUIDE

Amarillo Convention & Visitors Bureau
1000 S. Polk St. Amarillo, TX 79101
VisitAmarillo.com



Amy Tarr
Amy@visitamarillo.com
(806)342-2025

AMARILO®

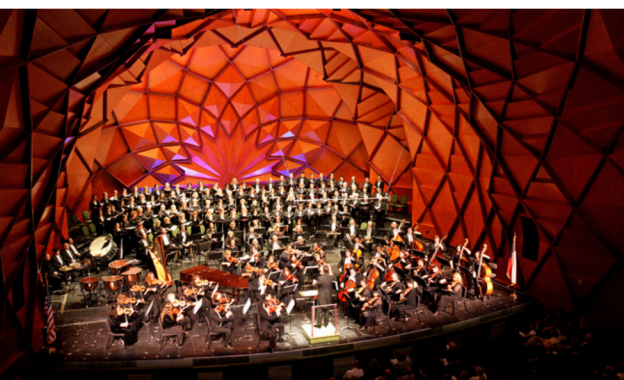


[VISIT WEBSITE](#)



Event Facilities

AMARILLO CIVIC CENTER COMPLEX



Amarillo Civic Center Complex is one of the best, most versatile convention facilities among similarly-sized cities. It can host conventions, meetings, concerts, and a variety of special events and sports including hockey, arena football, gymnastics and more! The Complex covers more than 410,000 square feet with a variety of facilities, which include: Cal Farley Coliseum, two exhibit halls, Heritage Ballroom, Auditorium, Grand Plaza and several other multi-purpose rooms. The newest addition to the Complex is the stunning Amarillo Globe-News Center for the Performing Arts, a 1,300 seat, world-class facility with near-perfect acoustics. It is home to the Amarillo Symphony, Amarillo Opera, and Lone Star Ballet, as well as a variety of other special concerts and events.

Conveniently located in downtown Amarillo, the Complex keeps your attendees centrally located, just minutes from the Rick Husband Amarillo International Airport, and provides easy access to Interstates 27 and 40, Historic Route 66, and more than 2,000 committable hotel rooms!

CAPACITY BY ARRANGEMENTS

| Room | Sq. Ft. | Ceiling Height | Classroom | Theatre | Banquet | 10x10 Booths |
|------------------------------|---------|----------------|-----------|---------|---------|--------------|
| Grand Plaza | 16,000 | n/a | 444 | 1,100 | 824 | 50 |
| Heritage Room* | 20,725 | 14 | 900 | 2,000 | 1,068 | 124 |
| Heritage West (A) | 10,228 | 14 | 480 | 900 | 560 | 49 |
| Heritage East (B) | 9,242 | 14 | 420 | 810 | 488 | 53 |
| North Exhibit Hall | 24,565 | 25 | 1,000 | 2,200 | 1,376 | 148 |
| North Exhibit Hall (A) | 11,705 | 25 | 432 | 1,300 | 672 | 70 |
| North Exhibit Hall (B) | 12,848 | 25 | 528 | 1,300 | 672 | 70 |
| Regency Room * | 10,080 | 12 | 504 | 1,100 | 560 | 56 |
| Regency Room (A) | 4,480 | 12 | 170 | 450 | 225 | 20 |
| Regency Room (B) | 6,960 | 12 | 300 | 725 | 400 | 35 |
| South Exhibit Hall | 26,700 | 14 | 1,100 | 2,900 | 1,500 | 155 |
| Hospitality Room | 5,100 | 14 | 192 | 450 | 240 | 21 |
| Gilliland Educational Center | 1,750 | 25 | 120 | 287 | 112 | n/a |

PERFORMANCE SPACE CAPACITIES

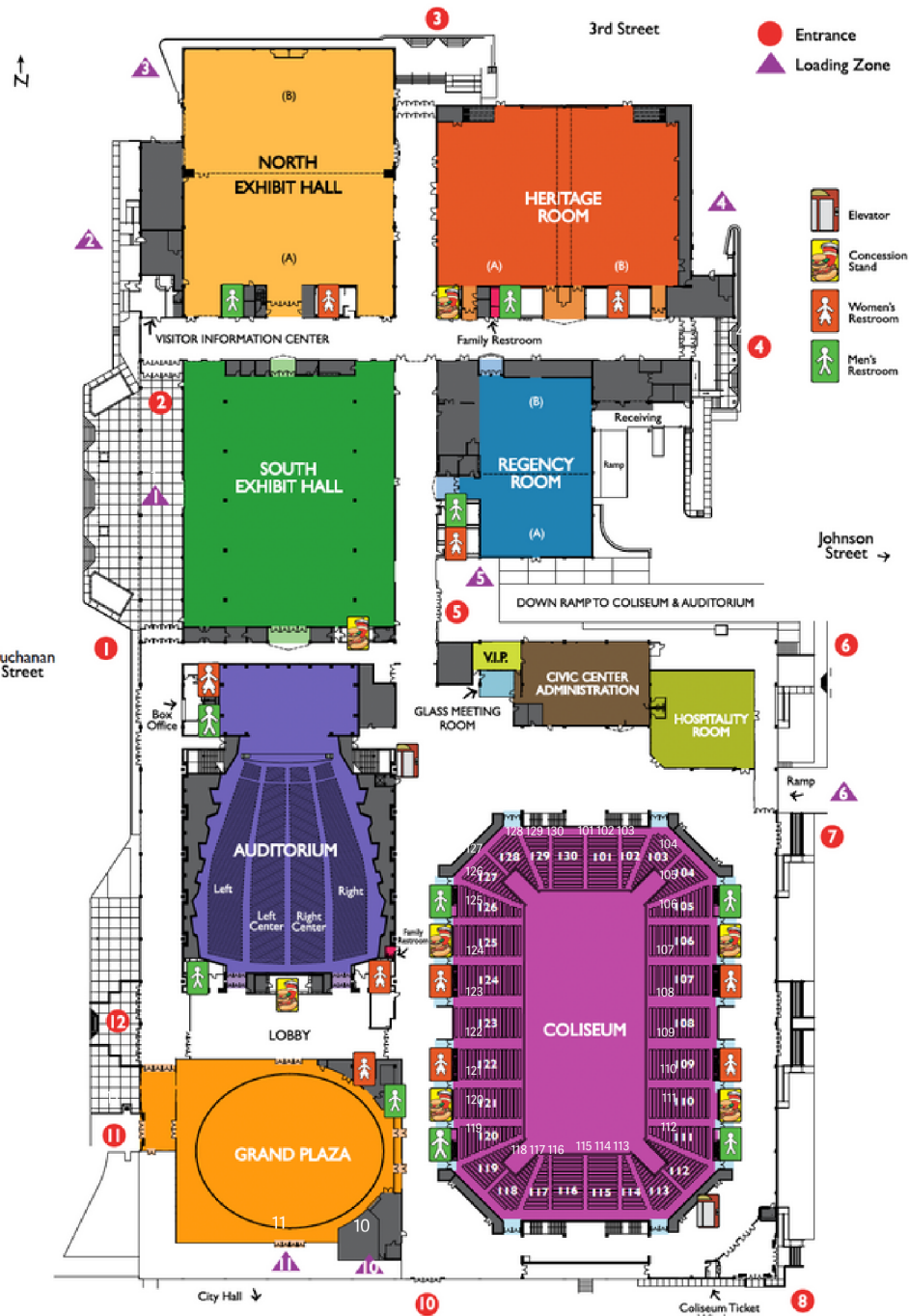
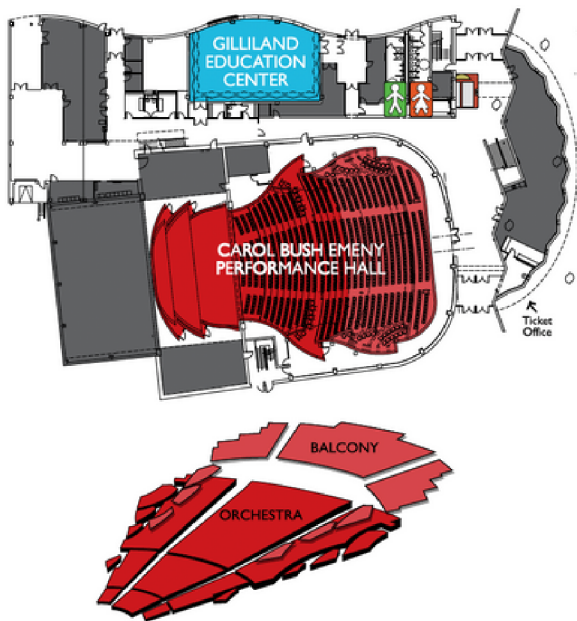
| | | | |
|-----------------------------------|-----------------|-----------------|----------------|
| Auditorium | (theatre style) | 2,324 permanent | 128 portable |
| Cal Farley Coliseum | (theatre style) | 4,870 permanent | 1,800 portable |
| Carol Bush Emeny Performance Hall | (theatre style) | 1,237 permanent | 77 portable |

*Breakout rooms available from 360-1,280 sq. ft. with capacities from 16-600. **All capacities are estimates. Exact capacity depends on individual event set-up.

CIVIC CENTER COMPLEX cont'd



GLOBE-NEWS CENTER
for the Performing Arts



TRI-STATE EXPO

The Tri-State Exposition fairgrounds and events complex offers a wide-array of facilities, including barns, arenas and exhibit buildings. The highlight facility is Amarillo National Center which – at more than 158,000 square feet – features 5,000 permanent seats and a multi-purpose dirt floor, plus a private club, PA system, dressing rooms, bucking chutes and vendor space. Combine that with onsite pavilions and ancillary arenas and you can see why this facility is an equestrian, livestock, and rodeo hot spot! View a facility map or [take a 360 degree tour of the ANC arena, pavilions, and ancillary areas.](#)



**All capacities are estimates. Exact capacity depends on individual event set-up.

CAPACITIES

| Room | Sq. Ft. | Dimensions | Seating Capacity | Door Clearance | Ceiling Height | Additional Information | Livestock Events |
|--|--------------------------|-------------------------|--------------------------------|---------------------------|----------------|---|--|
| Amarillo National Center | 158,562 | 150'x300' Dirt Floor | 5,000 Permanent 5,000 Floor | 22'x14' | 43' | Heated & Cooled, Private Club Seating for 125, PA System, 2 Dressing Rooms, Staging, Vendor Space | 7 Bucking Chutes & Timed Event Chutes, Livestock Holding Pens & Scoreboard |
| Rex Baxter Exhibit Building | 44,000 | 170'x274' | 2,188 | 14'x14' Overhead Doors | 14' | Concrete Floor, Well Insulated and Heated PA System | |
| Commercial Exhibits Hall | 14,430 | 74'x195' | 400-600 Banquet | | 10'6" | Kitchen, Concrete Floor, Heated & Air | |
| Bill Cody Equestrian Center | 74,750 21,150 (arena) | 230'x325' 94'x225' | 600 People | | 35' | Adequate Lighting, PA System, Skylights, Heating (in Grand Stands only) | 231 Permanent Stalls, Dirt Arena |
| South Warm-Up Arena | | 100'x250' | | | | Covered, Sound and Lights | Sand Based 6' Side Fencing |
| Vance Reed Livestock Center | 54,000 | 200'x270' | | | | Asphalt Floor | 300 Temporary Stalls |
| Glenn McMenamy Livestock Building (Cactus Arena) | 55,000 | | | | 14' | Asphalt Floor, PA System, Partial Heat | Will Hold 320 Temporary Stalls |
| Corral/Food Court | 24,000 | 60'x400' | | | 16' | Concessions Building, Open Sided Concrete Floor, Rest Rooms Adjacent | |
| Kimble I | | | | | | Stall Barns | 90 Permanent Stalls |
| Kimble II | | | | | | Stall Barns | 103 Permanent Stalls |
| Tommy Grant Arena | | 107' x 173' | | | | Covered | |

*All capacities are estimates. Exact capacity depends on individual event set-up.



Event Facilities



HODGETOWN BALLPARK

Hodgetown Ballpark is a vibrant and modern minor league baseball stadium located in Amarillo, Texas. Renowned for its state-of-the-art facilities, the stadium offers more than just baseball – it's a gathering place for community events, concerts, and various group activities. With its intimate atmosphere, picturesque views of the cityscape, and a range of amenities, Hodgetown provides the perfect setting for enjoying group outings and creating memorable experiences.

COTERIE SUITES



Coterie Suites, located on the concourse level, have an open-air concept with VIP seating. This package comes with a catered meal and non-alcoholic beverages for 25 guests. The ability to rent as a "Double Suite" to accommodate more guests is available to both the left and right field concourses. A private server, table-style seating, and a private area allows you and your guests to converse and enjoy the game in a non-traditional setting.

LUXURY SUITES



Luxury Suites are private and climate-controlled to beat the Amarillo Summer sun! All guests have access to the Fairly Group Club Level and VIP seating. Also included is a private server and fully-catered meal. These luxury boxes accommodate 20 people & 4 additional seats can be added. There is also an ability to connect additional suites for larger parties.

DUGOUT SUITES



The Dugout Suites provide an experience not found anywhere else in Minor League Baseball. These open-air, ground-level suites provide a view of the game from 30-feet behind home plate. Within the Dugout Suites, your guests will enjoy access to The Fairly Group Club-Level, a private server, catered-meal, and 32 alcoholic drink tickets. These suites accommodate 16 guests in a lounge-style setting to allow group interaction.

PICNIC PATIOS



The Picnic Patios allow large parties to enjoy a day at the ballpark! The right field patio can accommodate 20-140 people while left field can hold groups from 20-232. All parties within this picnic area come with catered meals and non-alcoholic beverages for all guests. The 4-Topp style seating allows for conversation while watching the game.

THE PARTY DECK



The Party Deck at HodgeTown is an exclusive area that can hold 50-70 people. This package includes The Fairly Group Club Level access, catered meals with non-alcoholic beverages, as well as a private server and bar. This area will have covered table-top and lounge-style seating to allow for easy conversation all while enjoying spectacular views of the ballpark.

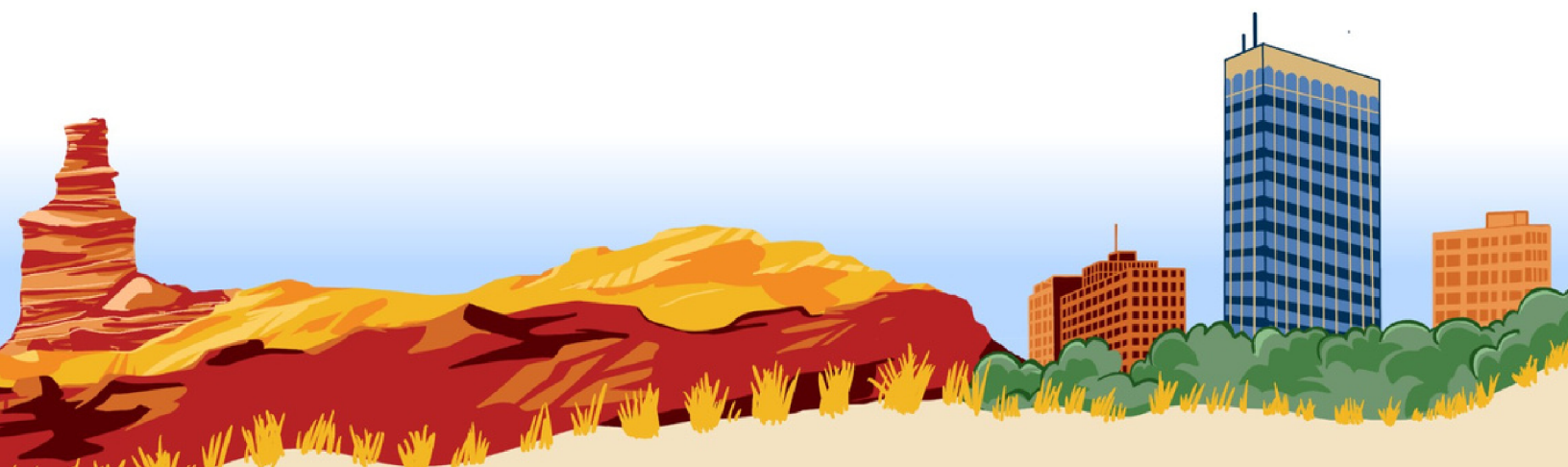
GROUP SEATING





Accommodations With Meeting Space

| Property | # of Sleeping Rooms | Total Meeting Space (GSF) | # of Restaurants | Free Breakfast | Free WiFi | Free Self Parking | Shuttle | Pets | Pool |
|--|---------------------|---------------------------|------------------|------------------|---------------|-------------------|-----------------|---------------|---------|
| <u>Ashmore Inn & Suites</u> 2301 I-40 East, 79104 806.374.0033 | 138 | 3,360 | — | Conti- nental | Yes | Yes | Airport only | — | Indoor |
| <u>Comfort Suites Western Plaza</u> 12 Western Plaza Dr., 79124 806.367.8880 | 83 | 2,275 | — | Full-hot | Yes | Yes | — | Fees apply | Indoor |
| <u>Courtyard by Marriott Downtown</u> 724 S. Polk St., 79101 806.553.4500 | 107 | 1,910 | Yes | — | Yes | Yes | — | — | — |
| <u>Drury Inn & Suites</u> 8540 I-40 West, 79121 806.351.1111 | 163 | 1,705 | — | Full-hot | Yes | Yes | — | Fees apply | Indoor |
| <u>Embassy Suites Downtown</u> 550 S. Buchanan, 79101 806.803.5500 | 226 | 18,000 | Yes | Full-hot | Yes | — | — | — | Indoor |
| <u>Fifth Season Inn & Suites</u> 6801 I-40 West, 79106 806.358.7881 | 119 | 8,978 | — | Full-hot | Yes | Yes | — | Fees apply | Indoor |
| <u>Fourpoints by Sheraton Central</u> 1911 I-40, Amarillo, TX 79102 806.242.6777 | 127 | 2200 | Yes | — | Yes | Yes | — | — | — |
| <u>Hilton Garden Inn</u> 9000 I-40 West, 79124 806.355.4400 | 90 | 3,240 | Yes | — | Yes | Yes | — | — | Indoor |
| <u>Holiday Inn East</u> 7777 I-40 East, 79118 800.465.4329 | 130 | 2,300 | Yes | — | Fees apply | Yes | Airport only | Fees apply | Indoor |
| <u>Holiday Inn West Medical Center</u> 8231 Amarillo Blvd. West, 79124 806.322.4777 | 151 | 3,800 | Yes | — | Yes | Yes | — | — | Indoor |
| <u>Homewood Suites</u> 8800 I-40 West, 79124 806.355.2222 | 92 | 2,924 | — | Full-hot | Yes | Yes | — | — | Outdoor |
| <u>The Barfield</u> 600 S Polk St., 79101 806.414.2200 | 110 | 2500 | Yes | — | Yes | — | — | Fees apply | — |
| <u>The Westerner</u> 2501 E Interstate Dr #40, 79104 806.905.6089 | 185 | 1650 | — | Full-hot | Yes | Yes | Yes | — | Indoor |



ARTS

Amarillo's variety of museums celebrate the city's Western heritage and arts while offering rentable space for groups.

The Amarillo Museum of Art

welcomes groups to gather amongst its renowned Asian art collection and its American and European works.

The Kwahadi Museum of the American Indian

provides a glimpse into the cultures of the people of the Pueblos through its art and artifacts and features regular performances by the Kwahadi dancers.

The Panhandle-Plains Historical Museum

located in Canyon, TX, stands as Texas' largest history museum. With a focus on Western and Panhandle history spanning back to the time of dinosaurs, it offers a captivating journey through time.

The American Quarter Horse Hall of Fame & Museum

is a revered institution showcasing the heritage of the American Quarter Horse breed. Through captivating exhibits and artifacts, it commemorates the legacy of quarter horse racing, performance, and their integral contribution to the history of the American frontier.

OUTDOORS

Amarillo's outdoor haven, with rolling hills and vivid canyons nearby, offers the picturesque Palo Duro Canyon State Park. Known as the "Grand Canyon of Texas," it provides hiking, horseback riding, biking along marked trails, and even thrilling Jeep tours. The park's Pioneer Amphitheater and Mack Dick Group Pavilion also offer distinctive event spaces for gatherings amid nature's splendor.

AMERICANA

Discover the nostalgic wonder of Amarillo as you cruise the famed "Mother Road" known as Historic Route 66. A portion of this "Main Street of America" runs through Amarillo and is lined with unique shops, restaurants, antiques and so much more! Don't miss the annual Texas Route 66 Festival! The ten-day festival is packed with events along the Texas route, including classic car shows, Texas Route 66 bus tours, cattle drives, parades, music festivals, and a grand finale festival on Amarillo's Route 66 Historic District.





Things to Do



Digital Welcome Guides

Enhance your attendees' experience by providing them with personalized digital welcome guides. Tailor these guides to feature a curated selection of nearby activities, dining options, exclusive promotions, comprehensive event information, and much more.



EXPERT CONSULTATION

We can assist meeting planners, tour operators and sports event organizers with unlimited complimentary consultation.



WELCOME TABLE

We offer onsite registration assistance to qualified groups and can refer to local vendors for others.



GROUP RATES

For qualifying groups, simplify hotel booking and tracking through our complimentary service, Sport-Travel/Total Lodging Solutions.



SPOUSE & YOUTH TOURS

We can offer several pre-built itinerary suggestions, or we can help develop customized offsite events or tours specific to your group's needs or interests.



PROMOTIONAL ITEMS

Welcome Table Amarillo "boot" pins, Visitor Guides, Pens & Notepads, VIP and/or speaker gifts, Etc.



TRANSPORTATION

We can assist in securing and coordinating transportation, from setting up a VIP limo pickup to coordinating chartered buses.



MARKETING

From press releases to custom "Welcome" messages on our digital airport sign, we can help your meeting attract the attention it deserves.

AMARILLO[®]