

YOUR SOUTHERN CALIFORNIA
MEETING DESTINATION



visitanaheim.org

Here to Help

Visit Anaheim offers a full spectrum of complimentary support services to assist planners, exhibitors and attendees to ensure your positive event experience. We can become your most valuable resource.



ANAHEIM CONVENTION CENTER

A 5-star business model that revolves around you

For us, it's all about surprising and delighting your imagination and making you, and your guests, feel special. When you visit Anaheim, you don't just get a meeting space, you get a meaningful experience.

Get an early advantage with a personalized plan

Visit Anaheim offers pre-meeting services guaranteed to build excitement among your exhibitors and attendees with complimentary customized marketing, welcome programs and tailored destination information.

Build an unforgettable experience, at a memorable price

Leverage our knowledgeable, local team to help you create an effective bid strategy to maximize your room blocks, saving you time and money. Visit Anaheim will also arrange site inspections and provide you with up-to-the-minute details on community events that will impact your meetings, as well as the latest hotel renovations and destination updates.

Our award-winning team, at your service

Once you team up with Visit Anaheim you'll instantly be given a direct point of contact who you can always count on. As true destination experts, we're excited to be able to assist you in finding the right hotels, venues, transportation, and dining and entertainment options.

We'll help you discover all that Anaheim and Orange County have to offer.



For more information, check out visitanahaim.org/meetings



ANAHEIM CONVENTION CENTER



Choose Anaheim

Anaheim remains a distinctive, vibrant and evolving destination for international and national conventions, trade shows and meetings. It offers world-class facilities and venues, the broad infrastructure for housing and transportation, and the people supporting the needs of meeting professionals, exhibitors and attendees.

Anaheim is a place you can come for a convention and stay for a memorable experience.

Fast Facts:

- **Centrally located** in Southern California, between Los Angeles and San Diego
- Accessible from **four major airports** and the Anaheim Regional Transportation Intermodal Center (ARTIC)
- Surrounded by a **drive market** of 20 million people living within a 90-mile radius
- Home to the Anaheim Convention Center, the **largest on the West Coast**, plus a wide variety of hotels and alternative venues with meeting and special-event spaces
- Serviced by **111 hotels** (22,183 rooms) within two miles of the ACC, including 41 properties (8,749 rooms) within a ½-mile walking distance
- Popular as a **leisure capital** for its world-renowned theme parks and tourist attractions, major pro sports teams, abundant recreational activities, distinguished dining, luxury shopping and entertainment options
- Graced by **nearly 300 days of sunshine**, just 13 inches of rain — and no snow — and an average temperature of 67 degrees
- Within a **20-minute drive to the Pacific Ocean** and its 42-mile stretch of Orange County coastline
- Nationally recognized for its **generous hospitality** and customer service



For more information, check out
visitanahaheim.org/meetings



CHOOSE ANAHEIM

Planes, Trains & Automobiles

Traveling to Anaheim and around Orange County is a breeze for visitors. Four major airports, AmtrakSM, Metrolink, public transportation, shuttle services, and taxi, limousine and rideshare companies can get you here and to everywhere you want to be.

Airlift

John Wayne Airport, Orange County (SNA)

ocair.com

The closest airport to Anaheim, John Wayne Airport, is constantly expanding its services to offer daily nonstop flights to many cities. A renovated ground transportation center is located between terminals. Passengers can hop on the Disneyland Resort Express bus at John Wayne Airport's Ground Transportation Center and head directly to the *Disneyland*® Resort or your Anaheim ResortTM hotel.

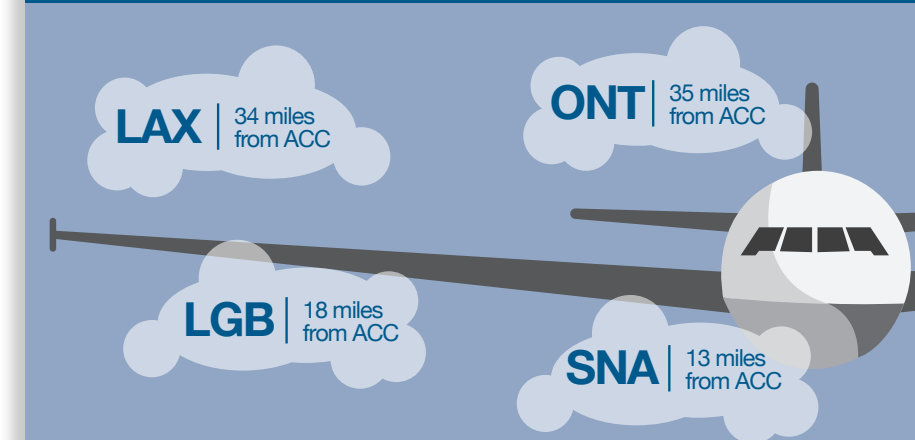
About 20 minutes from Anaheim

- Located 13 miles from the Anaheim Convention Center (ACC)
- More than 20 nonstop domestic and international routes
- More than 250 daily nonstop flights on several carriers, among them:

- | | |
|---------------------|----------------------|
| • Alaska Airlines | • Southwest Airlines |
| • American Airlines | • United Airlines |
| • Delta Air Lines | • WestJet Airlines |
| • Frontier Airlines | |



AIRPORTS SERVING THE ORANGE COUNTY AREA



Los Angeles International Airport (LAX)

lawa.org

Being so close to the fifth-busiest airport in the world – and the second busiest in the United States — has its advantages. With so many daily nonstop flights, routes serving major cities, all the major carriers and a full timetable at LAX, you're likely to find your ideal flight. Taxi, public transportation, rental car and shuttle services can get you to Anaheim.

About 45 minutes from Anaheim

- Located 34 miles from ACC
- Nearly 700 daily flights to 85 U.S. cities
- More than 900 weekly nonstop flights to 67 cities in 34 countries on 59 airlines

Long Beach Airport (LGB)

lgb.org

About 30 minutes from Anaheim

- Located 18 miles from ACC
- Small-airport convenience, large-airport destinations
- More than 450 weekly nonstop flights to 12 U.S. cities, including direct flights to New York City (JFK) and Boston (BOS)

LA/Ontario International Airport (ONT)

flyontario.com

About 45 minutes from Anaheim

- Located 35 miles from ACC
- 15 nonstop cities, 64 daily flights

Ground Transportation

ARTIC

articinfo.com

Opened in 2014, Anaheim Regional Transportation Intermodal Center (ARTIC) is a modernized Southern California transit hub serving Orange County's 3.1 million residents and its 47.3 million visitors in 2015. This majestic \$182.5 million landmark and 67,000-square-foot terminal is located in Anaheim and within walking distance of Honda Center® and Angel Stadium of Anaheim.

ARTIC Facts:

- Located 2 ½ miles from ACC
- Provides access to Metrolink (local trains), AmtrakSM, Orange County Transit Authority (OCTA) buses, Anaheim Resort Transportation (ART), shuttles, taxis, and tour and charter buses

ART Shuttle

rideart.org

The Anaheim Resort Transportation (ART) shuttle network connects hotels with dining, shopping and entertainment venues in the Anaheim Resort™ district. All 15 lines begin and end at the Disneyland® Resort Transportation Center. Pay one-way fares (\$3) or get an ART single-day or multi-day pass to get around Anaheim, but also beyond. Here are some places ART goes:

- ACC
- Disneyland® Park
- Anaheim Packing District
- ARTIC
- The Outlets at Orange
- Knott's Berry Farm (Buena Park)
- South Coast Plaza (Costa Mesa)





Anaheim Convention Center

The Anaheim Convention Center (ACC) reigns as the largest exhibit facility on the West Coast, having hosted such large, well-attended events as the Winter NAMM Show, Disney's D23 Expo and Citrix Synergy. Originally opened in 1967, the ACC spans 53 acres and offers 1.8 million square feet of function space and many dynamic features.

By the Numbers:

- Exhibit space: over one million square feet
- Meeting rooms: 99
- Meeting space: 352,000 square feet
- Three ballrooms: 238,000 square feet total
 - Two ballrooms: 100,000 square feet
 - One ballroom: 38,000 square feet
- Pre-function lobby space: 200,000 square feet
- Outdoor venue space: 200,000 square feet in the Arena Plaza, Palm Court and Grand Plaza
- Arena: 7,500 theater-style stadium seats



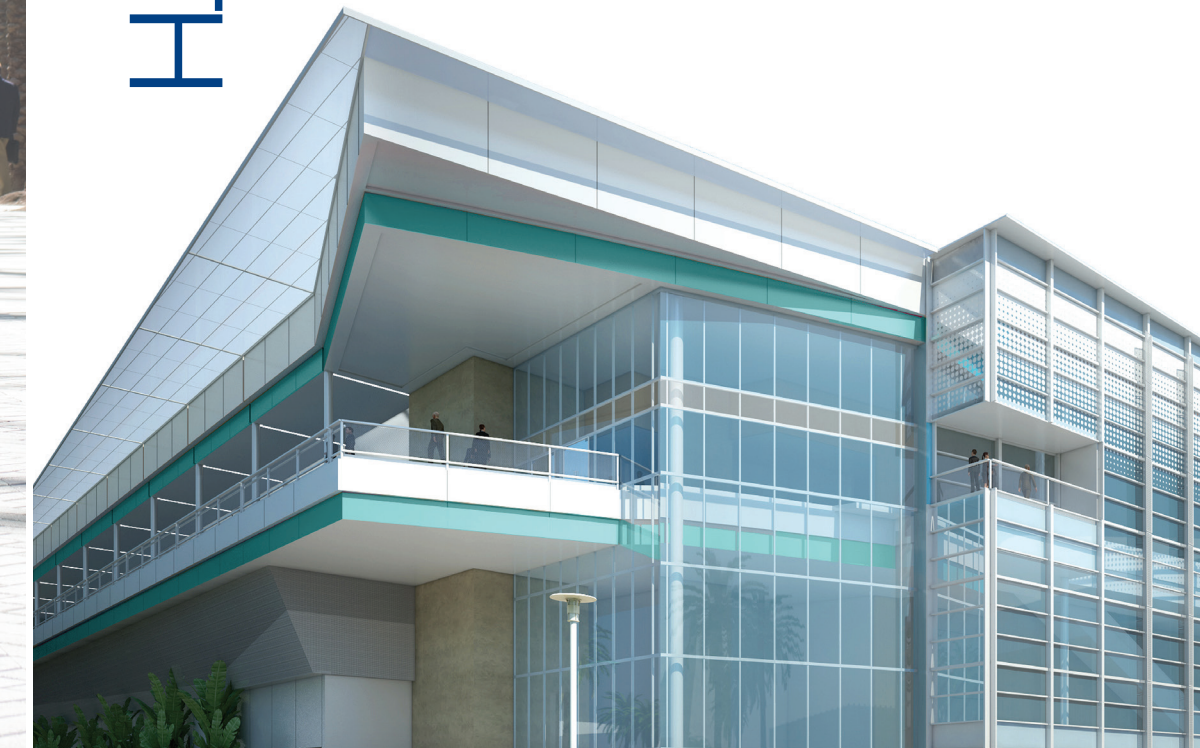
ACC NORTH

In September 2017, ACC debuted 200,000 square feet of flexible space, creating a blank canvas for meeting professionals the ultimate opportunity for event customization.

ACC North includes 100,000 square feet on the 100 level and an additional 100,000 square feet of carpeted, column-free space on the 200 level with direct access to an over 10,000 square foot outdoor balcony and state of the art pre-function areas.

ACC North Details:

- Natural light on each level with blackout capabilities.
- Up to 35 rooms on the 200 level (over 3,400 linear feet of moveable walls) and up to 13 rooms on the 100 level (over 2,200 linear feet of moveable walls).
- ACC North meeting rooms are grouped into neighborhoods to allow for customizable climate and lighting controls.
- Rigging points on each level and pre-function spaces are able to hang 2,000 lbs. every 10 feet in the event space and in the pre-function space offering over 2,100 points to hang.



ACC's "Green" Life

The ACC cares for the environment through word and deed.

Environmentally Conscious Practices and Policies

- **Green Roof:** The 2,000 square-foot space atop the Arena box office is a garden for adaptive plants and herbs.
- **Solar Power:** The 300,000 square-foot solar array spanning the roofs of Exhibit Halls A, B and C produces 2.37 megawatts of clean, renewable and sustainable electricity.
- **HVAC Policy:** The Exhibit Hall HVAC is operational only from one hour before the event to its completion. It is not used while the roll-up doors are open in order to conserve energy.
- **Sustainable Purchasing:** Sustainable purchasing is always encouraged and, when feasible, required for ongoing consumables such as paper, printer toner cartridges and batteries.

Green Achievements

- The ACC is a 2016 LEED (Leadership in Energy and Environmental Design) Gold-certified structure, one of the largest convention centers in North America to earn this prestigious distinction.
- With ACC-wide efforts, 86 percent of ongoing consumable purchases, 95 percent of electronic purchases and 78 percent of cleaning product purchases meet strict LEED guidelines for sustainability.
- The "Green Zone" turns kitchen food scraps into nutrient-rich compost later used for the landscape beautification of the Anaheim Resort™ district.
- More than half (54 percent) of all mixed trash waste is diverted from the landfill each year.

Awards and Achievements

- ACC was honored with the "Greening Pioneer" award by Venues Today.
- ACC received the "Venue Excellence Award" from the International Association of Venue Managers (IAVM).
- Anaheim was named the 2011 and 2012 top "Eco City" in Orange County by the U.S. Green Building Council.

Recycling Initiatives

- The "Green Zone" serves as the ACC's onsite recycling center.
- At least 50 percent of ACC products are Forest Stewardship Council (FSC)-certified.
- The ACC encourages use of biodegradable utensils, cups and serving plates.
- Partnerships have been developed with the Environmental Protection Agency, local food banks and other environmentally conscious organizations.



ROOFTOP GARDEN - ANAHEIM CONVENTION CENTER



SOLAR ROOFTOP - ANAHEIM CONVENTION CENTER



GRAND PLAZA - ANAHEIM CONVENTION CENTER



More ACC Features:

Catering Services

- In-house banquet, catering and event chefs bring an ease and flair to any sized dining event. Sustainable practices and memorable experiences are our trademark.

Our Technology and Event Production Services

- The ACC has a newly upgraded wired and wireless network with an industry-best 10-gigabyte connection from Smart City Networks, the nation's convention telecommunications and Internet services leader.
- Free WiFi access is available throughout the entire ACC.
- Audiovisual and event production support is facilitated by PSAV.

Environmental/Social Change

- **Helping Others:** The ACC works with "Chefs to End Hunger," which provides meals to the hungry by repurposing and redistributing the excess prepared food that would normally go to waste at the ACC and participating hotels.
- **Developing Sustainable Menus:** Catering Services remains committed to protecting and improving the environment and to making socially responsible choices.

Places to Meet and Stay

Many Anaheim and surrounding Orange County hotels have designated function space for meetings and special events that span the full spectrum of size, luxury, location and affordability.

By the Numbers

Hotels	Number	Total Rooms
Within 1/4 mile of the ACC	10	4,469
Within 1/2 mile of the ACC	41	8,749
Within 3/4 mile of the ACC	64	14,221
Within 1 mile of the ACC	82	18,239
Within 2 miles of the ACC	111	22,183
In the Anaheim Resort District	92	20,157
In Anaheim	152	20,693
In Orange County	506	58,363

ACC Adjacent Hotels

Hilton Anaheim

- 1,574 guest rooms
- 146,000 square feet of function space

Anaheim Marriott

- 1,030 guest rooms
- 100,000 square feet of function space

Sheraton Park Hotel at the Anaheim Resort

- 490 guest rooms
- 30,000 square feet of function space

Clarion Hotel Anaheim Resort

- 284 guest rooms
- 7,000 square feet of function space



For more information, check out
visitanahaim.org/anaheimcampus



WYNDHAM ANAHEIM GARDEN GROVE



DISNEY'S GRAND CALIFORNIAN HOTEL® & SPA



ANAHEIM MARRIOTT SUITES



ANAHEIM HILTON

Anaheim Resort™ District Hotels

Homewood Suites by Hilton Anaheim Resort-Convention Center

- 215 guest suites
- 850 square feet of function space
- ¼ mile from ACC

Desert Palms Hotel and Suites

- 189 guest rooms
- 5,000 square feet of function space
- ¼ mile from ACC

Disney's Paradise Pier® Hotel

- 481 guest rooms
- 30,000 square feet of function space
- ½ mile from ACC

DoubleTree Suites by Hilton Hotel Anaheim Resort-Anaheim Convention Center

- 251 guest rooms
- 7,500 square feet of function space
- ½ mile from ACC

Red Lion Hotel Anaheim Resort

- 310 guest rooms
- 5,500 square feet of function space
- ½ mile from ACC

Disneyland® Hotel

- AAA Four Diamond hotel
- 973 guest rooms
- 150,000 square feet of function space
- ¾ mile from ACC

Disney's Grand Californian Hotel® & Spa

- AAA Four Diamond hotel
- 948 guest rooms
- 20,000 square feet of function space
- ½ mile from ACC

Wyndham Anaheim Garden Grove

- 376 guest rooms
- 36,000 square feet of function space
- One mile from ACC

Hyatt Regency Orange County

- 656 guest rooms
- 65,000 square feet of function space
- One mile from ACC

Embassy Suites by Hilton Anaheim South

- 375 guest suites
- 11,000 square feet of function space
- One mile from ACC

Anaheim Marriott Suites

- 371 guest suites
- 9,000 square feet of function space
- One mile from ACC

Great Wolf Lodge Southern California

- 603 guest rooms
- 21,967 square feet of function space
- 1 ½ miles from ACC

Anaheim Majestic Garden Hotel

- 489 guest rooms
- 20,000 square feet of function space
- 1 ½ miles from ACC

Sheraton Garden Grove-Anaheim South Hotel

- 285 guest rooms
- 8,000 square feet of function space
- 1 ½ miles from ACC

Four Points by Sheraton

- 246 guest rooms
- 5,000 square feet of function space
- 1 ½ miles from the Convention Center

Embassy Suites Anaheim-Orange

- 230 guest suites
- 2,000 square feet of function space
- 2 miles from ACC

DoubleTree by Hilton Hotel Anaheim-Orange County

- 461 guest rooms
- 22,000 square feet of function space
- 3 miles from ACC

See next page for airport and coastal hotels.

Airport and Coastal Hotels

If you seek the convenience of being near the airport or crave Orange County's 42 miles of stunning, sun-splashed Pacific Ocean coastline, Orange County has room for your group, meeting or event. You'll find business hotels, affordable options, AAA Four Diamond properties and upscale resorts with luxurious spas and award-winning restaurants. You can even have a cozy, boutique hideaway with a waterfront view with Orange County as the destination for your perfect retreat.

John Wayne Airport (SNA) Area Hotels

Hotel Irvine

- 536 guest rooms
- 36,000 square feet of function space
- Located in Irvine

Hilton Irvine/Orange County Airport

- 302 guest rooms
- 23,000 square feet of function space
- Located in Irvine

Hilton Orange County/Costa Mesa

- 486 guest rooms
- 46,000 square feet of function space
- Located in Costa Mesa

Avenue of the Arts Hotel

- AAA Four Diamond Hotel
- 258 guest rooms
- 7,200 square feet of function space
- Located in Costa Mesa

Radisson Hotel Newport Beach

- 345 guest rooms
- 20,000 square feet of function space
- Located in Newport Beach

DoubleTree by Hilton Hotel Santa Ana-Orange County Airport

- 253 guest rooms
- 13,000 square feet of space
- Located in Santa Ana

Coastal Hotels

Hyatt Regency Huntington Beach Resort and Spa

- AAA Four Diamond Hotel
- 517 guest rooms
- 112,000 square feet of function space
- Located in Huntington Beach

The Waterfront Beach Resort, A Hilton Hotel

- 437 guest rooms
- 48,000 square feet of function space
- Located in Huntington Beach

Pasea Hotel & Spa

- 250 guest rooms
- 15,500 square feet of function space
- Located in Huntington Beach

The Resort at Pelican Hill

- 332 guest rooms
- 20,000 square feet of function space
- Located in Newport Coast

Island Hotel Newport Beach

- AAA Four Diamond Hotel
- 295 guest rooms
- 30,000 square feet of function space
- Located in Newport Beach

La Casa del Camino

- 36 guest rooms
- 4,810 square feet of function space
- Located in Laguna Beach



New Hotels in Development in Anaheim

Four Diamond Hotel to be built next to Anaheim Convention Center

A \$225 million, over 600-room property will stand eight stories high with 42,000 square feet of meeting space. Construction begins in early fall 2017 with a slated 2019 opening.

Orange County's First JW Marriott

The Four Diamond hotel will be built adjacent to the Anaheim GardenWalk. Scheduled to open in 2020, the 12-story \$150 million property will have 466 guest rooms as well as meeting space for large groups.

Luxury Hotel to Replace Anaheim Plaza Hotel & Suites

Located on the corner of Harbor Blvd. and Disney Way, the 580-room property will include 50,000 square feet of meeting space. The \$208 million hotel is set to open in 2023, brand to be announced.

Cambria Hotels International

The new property will have meeting space, a contemporary bistro, and a California-themed outdoor space with a pool and movie screening wall. The 345-room hotel will open in November 2018.

Disneyland® Resort a Luxury Hotel

The 700-room AAA Four Diamond hotel will offer many luxury amenities and guests will be able to dine under the fireworks at a rooftop restaurant. Construction begins in 2018 with a slated 2021 opening.





HOUSE OF BLUES ANAHEIM



LUCKY STRIKE LANES



THE ARENA AT THE ANAHEIM CONVENTION CENTER

Special Event Venues

Anaheim and surrounding Orange County have dozens of distinctive facilities where your group can gather for special events or enjoy a sporting event, an amusement park, music, the sunshine, surf, sunset or the stars. Here are a few options in Anaheim and beyond:

The Arena at the Anaheim Convention Center

Anaheim

Since its opening in 1967, Elvis Presley, The Doors, Led Zeppelin, David Bowie and Ray Charles have performed there. And so can your group — for shows, keynote sessions, private receptions and events. The arena has 28,140 square feet of flat floor space and a capacity of 7,500 in theater-style, stadium seating. The alternative banquet arrangement can handle 1,200 people. Two adjacent meeting rooms of 2,100 and 3,100 square feet — or the combined 5,200-square-foot room for 500 people — are also available.

Disneyland® Park and Disney California Adventure® Park

Anaheim | ½ mile from ACC

World-famous *Disneyland*® Park, which recently held its Diamond Celebration, and adjacent *Disney California Adventure*® Park, are a major draw for attendees who bring their families to a Southern California meeting. These are also magical places for entertaining before or after your meeting days. Disney offers special evening tickets for convention and meeting attendees and exclusive buyout areas for large groups.

American Sports Centers-Anaheim

Anaheim | One mile from ACC

The largest indoor court facility in the world (242,000 square feet) is home court for the USA Volleyball Men's and Women's National teams, Southern California Volleyball Association and Open Gym Premier Basketball Academy, among others. It features 34 volleyball courts, which convert into 25 basketball courts or nine indoor futsal/soccer courts. There's room for 4,000 spectators/attendees for a pre- or post-game affair. The hardwood floor has space for 130 tables (1,300 chairs) in a banquet configuration. A 1,300-square-foot VIP room is also available for your more private, catered events.

More Special Event Venues

The RANCH Restaurant & Saloon®

Anaheim | Two miles from ACC
Buyout Capacity: 40-264

Comprised of 7,679 square feet, THE RANCH Private Dining and Events Center is on the sixth floor and above the critically-acclaimed RANCH Restaurant & Saloon® (also available for buyout). Take in spectacular views of Anaheim and beyond. Feast on Executive Chef Michael Rossi's farm-to-table menu.

Angel Stadium of Anaheim

Anaheim | Three miles from ACC
Buyout Capacity: 44,050

This gorgeous, twice-renovated Major League Baseball facility has been the home of Angels Baseball since it opened in 1966. Its iconic, 230-foot "Big A" scoreboard, which lends the ballpark its "Big A" nickname, still soars as an illuminated message board. The ballpark features a center field "California Spectacular" rock formation and waterfall, two mammoth outfield Daktronics videoboards, six full-color LED displays and full-service restaurants. This is home to the 2002 World Series champions and three American League Most Valuable Players, including superstar Mike Trout.

City National Grove of Anaheim

Anaheim | Three miles from ACC
Buyout Capacity: 5,000

World-class musicians, celebrated comedians and entertainers perform at this venue that also often hosts large private and corporate receptions, dinners and roaming networking events. Each room has a distinctive style and ambiance, among them a vintage industrial lounge, a private outdoor Palm Terrace and an art deco lobby perfect for cocktails.



BOWERS MUSEUM

The FIFTH

Anaheim | 1/2 mile from ACC
Buyout Capacity: 300

The FIFTH is Anaheim's only rooftop bar and lounge located on top of Grand Legacy At The Park and directly across the street from the Disneyland® Resort. The FIFTH offers an assortment of craft cocktails, a wide selection of local brews, and a menu of lite bites and handcrafted entrees as well as a great view of Disneyland Park's nightly fireworks.

Grasslands Meat Market

Anaheim | 1/2 mile from ACC
Buyout Capacity 800

Grasslands is a full-service restaurant and bar, steak house, BBQ, catering, banquets and butcher shop; offering meeting rooms with full AV capabilities with 680 seats plus private dining capacity up to 120 people.

Honda Center®

Anaheim | Three miles from ACC
Buyout Capacity: 19,200

Opened in 1993, this premier sports and entertainment venue is home to the 2007 NHL Stanley Cup champion Anaheim Ducks™. The arena, which has a seating capacity ranging from 17,174 (hockey) to 18,900 (center-stage configuration), is equipped with Cisco's state-of-the-art StadiumVision platform, incorporating 500 HD monitors and a 27-by-47-foot scoreboard that provides the highest definition picture available in any North American venue. Honda Center also features a 7,000-seat theatre; a 15,000 square-foot Shock Top Terrace, an indoor/outdoor entertainment space with a 250-seat, full-service restaurant and chef-inspired menu; the Standing 'O' and Jack Daniel's Old No. 7 Club restaurants; and two function rooms (Vista Room and Board Room) for private meetings or luncheons.

House of Blues Anaheim

Anaheim | 1/2 mile from ACC
Buyout Capacity 3,300

The House of Blues at Anaheim Garden Walk opened in February 2017 with four individual performance areas, including the exclusive Foundation Room for a VIP experience. Catch their famous (and delicious) Sunday brunch with a side of gospel, or enjoy a night out jamming to great music. With access to the world's most exceptional musical entertainment, custom menus and mixology, this new venue in Anaheim will exceed the expectations of even the most discerning guest.



CITY NATIONAL GROVE OF ANAHEIM

Rumba Room Live

Anaheim | 1/2 mile from ACC
Buyout Capacity: 900

Part of the GardenWalk scene, the recently relaunched Rumba Room Live in Anaheim brings its exciting blend of energy and elegance to Anaheim featuring an expansive stage and dance floor, state-of-the-art sound and lighting. The venue's combination of live entertainment, appealing menu and VIP bottle service in an ultra sophisticated and stylish setting is sure to captivate you.

MUZEO Museum and Cultural Center

Anaheim | Three miles from ACC
Buyout Capacity: 2,200

The new model for urban cultural centers opened in 2008, this 25,000-square-foot complex integrates Anaheim's original Carnegie Library and a gallery space for the Main Gallery. It's surrounded by loft living and street-level retail while offering a changing calendar of exhibitions, activities and events.



KNOTT'S BERRY FARM®

Lucky Strike Lanes, The Outlets at Orange

Orange | Three miles from the ACC
Buyout Capacity: 1,200

This venue offers a cutting-edge combination of modern bowling, innovative dining, lounging and multimedia art. It features a 75-seat restaurant with an inventive menu from Along Came Mary Productions catering. There's also a private room with six lanes, a projection screen and lounge for VIP events.

Splitsville Luxury Lanes

Anaheim | 1/2 mile from ACC

Downtown Disney is a dynamic entertainment destination offering a unique combination of dining, drinks, bowling and live entertainment with 40,000 square feet of event space and 20 luxury bowling lanes on two floors. With ample indoor and outdoor seating and private event space to accommodate up to 1,000 guests. The eclectic menu and live entertainment on the patio ensures there's something for everyone whether you pick up a ball or not.

Bowers Museum

Santa Ana | Four miles from ACC
Buyout Capacity: 2,200

One of Southern California's finest museums and Orange County's largest, Bowers Museum offers exhibitions from the world's greatest museums and its own collections of African, South Pacific, Asian, Native American and pre-Columbian art and California plein-air paintings. The museum also features a 300-seat auditorium.

Knott's Berry Farm® Theme Park

Buena Park | Eight miles from ACC
Buyout Capacity: 5,000

Experience six themed areas on 160 acres full of world-class thrills and family fun. Take off like a Silver Bullet, a suspended coaster that leads riders through six inversions. Visit Camp Snoopy and the Peanuts Gang. In 2016, Knott's began celebrating its 75th anniversary with the "Ghost Town Alive!" show and the reopening of GhostRider, the West Coast's longest, fastest and tallest wooden rollercoaster.

Marconi Automotive Museum

Tustin | Nine miles from ACC
Buyout Capacity: 800

Opened in 1994, this nonprofit museum and special events venue houses a \$30 million, one-of-a-kind collection of classic Ferraris, Lamborghinis, Maseratis, Porsches, historic, exotic and high performance muscle cars. The veranda is home to the motorcycle collection while the race shop features vintage Formula race cars. Automotive history is your backdrop.

Richard Nixon Presidential Library and Museum

Yorba Linda | 11 miles from ACC
Buyout Capacity: 9,500

Events are immediately memorable when guests move through this stunning replica of the historic White House East Room or reception, for candlelight dining or dancing. Massive crystal chandeliers, golden silk drapery, imported marble fireplaces and other adornments around this nine-acre venue provide an intimate glimpse into the life of the 37th U.S. President.



MARCONI AUTOMOTIVE MUSEUM



For more facilities in Anaheim and Orange County,
visitanahiem.org/event-venues

Work and Play

Southern California, the nation's second-largest sports market, has sports teams chasing championships. Fitness-minded residents get their sweat rolling and heartbeat going. Here, you can go out-of-bounds by staging your meeting in a sports setting for a change of scenery. Or, you can get the group moving with recreational activities for team-building, exercise or simply some well-deserved fun in the sun.

Los Angeles Angels of Anaheim®

Catch two generational talents in 2016 MVP Mike Trout and future Hall of Famer Albert Pujols as they lead Angels Baseball at Angel Stadium of Anaheim. The Halos won the 2002 World Series and have since captured six American League West titles, most recently in 2014. Their 162-game regular season runs from April through September, and with playoffs in October.

Anaheim Ducks™

Take in a hockey game featuring these 2007 NHL Stanley Cup champions and frequent playoff contenders at Honda Center®. Their 82-game regular season runs from October through April, with the Stanley Cup playoffs culminating in June.



HONDA CENTER



ANGEL STADIUM



HUNTINGTON BEACH

Orange County's Turf and Surf

Bike

About 1,000 scenic miles of cycling paths and mountain-bike trails zigzag across Orange County, taking bicyclists from sea to mountain with 360-degree views of beaches, historic neighborhoods, the wetlands and the woods.

Huntington Beach Bicycle Trail: Ranked one of the nation's best bike trails by CNN Travel, this paved, oceanfront, 8 ½-mile course runs the length of "Surf City, U.S.A.®," passing the famed Huntington Beach Pier, the Bolsa Chica Ecological Reserve and scenes of surfing, sunbathing, the seaside and sunset.

Run and Hike

Unwind from a long day of meetings with a workout at a hotel fitness center. Lace up your running shoes for a quick jog through the Anaheim Resort™ district with recommended routes from the Visit Anaheim website. Explore Southern California just by stepping outside.

Orange County has more than 39,000 acres of nature preserves, wilderness, wind-buffeted bluffs and steep climbs, providing options for everyone from the casual hiker to the avid outdoorsman. Here are three places to explore:

- **San Clemente Beach Trail (Easy):** This seaside, fairly flat, out-and-back trail on well-groomed crushed granite is 4.6 miles long and shared with runners and cyclists.
- **Ridgeline Loop to Barbara Lake Trail (Moderate):** Laguna Coast Wilderness Park features 40 miles of trails through some of California's last remaining coastal canyons. This 3.12-mile trail with a 679-foot elevation gain takes you around Orange County's largest natural lake in about 90 minutes.

- **North Ridge and Gilman Peak Trails (Challenging):** Located in Chino Hills State Park (Yorba Linda), this rugged, 10.3-mile loop through canyons has a 1,300-foot elevation gain and takes about four hours. Both trails provide access to Gilman Peak (1,685 feet), the second-highest point in the state park.

Surf

With 42 miles of coastline, Orange County offers plenty of waves from which to choose in this surfing mecca. Beyond legendary Trestles and its world-class waves, here are a few popular places for paddling out:

- **Huntington Beach Pier:** Located at the heart of "Surf City, U.S.A.®, " near the intersection of Pacific Coast Highway and Main Street, this world-famous surf spot is a must-try for both beginners and pros. Known for its beach breaks, the pier's south side is the site of each year's U.S. Open of Surfing.
- **T-Street Beach, San Clemente:** Named for the nearby T-shaped pedestrian overpass traversing the railroad tracks, this beach welcomes surfers of all levels. For crowd control, note summer "blackball" hours of 9 a.m. to 6 p.m., limiting the beach to only swimming and boogie boarding.
- **Brooks Street, Laguna Beach:** Home to the world's oldest and longest running surf contest, the Brooks Street Surfing Classic, this local favorite offers one of Laguna's biggest beach breaks and the south swells that give experienced surfers powerful waves.
- **Seal Beach Pier:** The centerpiece off Main Street in Old Town Seal Beach — the northernmost coastal city in Orange County — is a popular destination for bodysurfers and boogie boarders.

- **Balboa Peninsula, Newport Beach:** The Wedge, located at the east end, is a local favorite for surfing, skimboarding, bodyboarding and bodysurfing. A rocky jetty on the west side of Newport Harbor gives waves their wedge shape. They can be hollow, quick and tricky for even seasoned surfers. "Blackball" hours are set from May to October, reserving the spot for bodyboarders.

More Water Activities

From Seal Beach south to Dana Point, Orange County offers a sea of adventure:

- Deep-sea fishing
- Gray and blue whale and dolphin-watching cruises
- Catalina Island getaways
- Stand-up paddleboarding
- Kayak, electric boat and personal water craft rentals
- Sailing and harbor cruises



Get into the Swing of Things

With its year-round sunshine and warm weather, Orange County is home to more than 40 golf courses to match any skill level. Schedule a golf-themed outing for friendly competition or team-building by getting in a quick nine holes. Go networking or sightseeing at championship courses that take advantage of their natural surroundings. Here are some jewels where you can tee off:

Tustin Ranch Golf Club

This public, Ted Robinson-designed course has consistently been voted “Best in OC” for the “Orange County Golf Course and Driving Range” category by readers of the Orange County Register. Also rated as a four-star course by Golf Digest, the 18-hole, par-72, 6,842-yard course offers luscious fairways and impeccably manicured greens. Check out No. 11, the signature, par-3, 136-yard hole that requires a strong iron shot to get to an island green. The first-class service and hospitality at the Restaurant at Tustin Ranch, Players’ Lounge and Pine Tree Patio make this club a popular site for corporate tournaments, business outings and events.

Oak Creek Golf Club

Located in Irvine, this award-winning, Tom Fazio-designed course offers 18 spectacular holes (par-71, 6,834 yards) that wind past lakes, tree-lined

fairways and bull-nosed carved bunkers to reach the challenging greens. Owls and hawks nest in the dense surrounding woods of towering eucalyptus. Egrets and herons take stilted steps in the creek at this Audubon Cooperative Sanctuary participating course. Its group events department organizes corporate golf clinics, including lessons and golf socials, nine-hole tournaments and cocktail parties on the terrace overlooking the 18th hole.

Strawberry Farms Golf Club

A Golf Digest-“favored” course across a 35-acre reservoir of rolling wetlands, natural waterfalls and wooded canyons, Strawberry Farms is as scenic as it is challenging. The 6,700-yard course (par-71) was developed by former MLB All-Star Doug DeCinces. Tournament and special event packages are available featuring the Terrace Veranda, an open-air, covered patio surrounded by flowering gardens. The club won a 2011 BRIDES magazine Editor’s Choice award for “Best Reception Site: Unique Venue.”

Coyote Hills Golf Course

With panoramic views of Orange County and Los Angeles, this award-winning course (par-70, 6,660 yards) is built into the foothills of Fullerton and offers

one of the area’s most unique golfing and entertaining experiences. Designed by Cal Olson and consultant/PGA legend Payne Stewart upon property formerly owned by Unocal Oil, the plush course has a crafty 250-acre layout that still features 21 remaining pumps among its gently rolling dunes. Coyote Hills was rated among the top 100 “Women Friendly Courses” by Fairways magazine in 1998 and ranked in the top 50 by Golf for Women.

Monarch Beach Golf Links

Located at the prestigious St. Regis Resort in Dana Point, this public, par-70 championship course offers a variety of play set against the stunning views of the Pacific. Master architect Robert Trent Jones Jr. capitalizes on the location as the only Orange County course literally “on the beach.” Golf Magazine awarded Monarch Beach a silver medal in its 2012 list of Premier Golf Resorts. Golf Digest gave it 4 ½ out of 5 stars among its “Best Places to Play.” Its Club 19 restaurant offers breakfast, lunch and a view.

Pelican Hill Golf Club

World-renowned course architect Tom Fazio has taken full advantage of its stunning seaside location along the Newport Coast to create two 18-hole championship courses that will test your mettle and take your breath away. Both the Ocean North (par-71, 6,945 yards) and the Ocean South (par-70, 6,580 yards) require a cerebral game. The green fees reflect the luxury and amenities, including professional forecaddies and well-appointed men’s and women’s locker rooms. The club welcomes groups of 10 to 400 to its indoor and outdoor spaces for the meetings that mix business with pleasure.



For more information, please contact your Destination Services manager or swing over to visitanahaim.org/explore



Creating the vibe

Anaheim, yes, is a top convention destination. But the dining here is anything but conventional.

We're in the belly of Southern California. Sure, we have a buffet of familiar national chains. But we're very much a foodie city too, one driven by award-winning chefs who sustain what has become a very cool era of dining out. Our restaurants pull from a bounty of locally grown organic produce. They select the fresh sustainable catch from the Pacific Ocean and grass-fed meats from regional ranches. Chef-inspired concepts thrive in hip, trendy districts where the food looks as good as it tastes. Our many artisanal restaurants have changing farm-to-fork menus. Our eateries run the gamut from greasy spoons to garden-fresh, health-conscious hotspots. Our ethnic enclaves offer authentic favorites. Our drinkeries reward anyone with a fondness for craft beer and the mixology behind cocktails.

This is a place where you can bring on the night.

Taste. Swig. Sip. Savor.
Unwind in Anaheim.



Photo courtesy of South Coast Plaza/ Tucker + Hossler



CONVENTION CENTER AREA

If you want to take a break from your room-service menu, you won't have to venture far from the Anaheim Convention Center for a quick, casual indulgence. More than 100 restaurants are within walking distance or within a five-minute ride, offering your group the memorable dining experience you're seeking.

Anaheim GardenWalk

321 W. Katella Ave. | ¼ mile from ACC
visitanaheim.org/anaheim-gardenwalk

Opened in 2008, this 460,000-square-foot outdoor dining, shopping and entertainment plaza has scaled down or express versions of popular upscale chains and plenty of places where you can people-watch, hang out and have a couple happy hours.

- Bowlmor Lanes
- Bubba Gump Shrimp Co.
- California Pizza Kitchen
- FiRE+iCE
- Grasslands Meat Market
- Heat Ultra Lounge
- House of Blues Anaheim
- McCormick & Schmick's Grille
- McFadden's Restaurant and Saloon
- P.F. Chang's China Bistro
- Roy's Hawaiian Fusion Cuisine
- The Cheesecake Factory

Disneyland® Resort restaurants

Downtown Disney® District is a lively promenade of distinctive indoor and outdoor dining, entertainment and shops. Its adjacent hotels offer some of the top eats in Anaheim. And you won't even have to pay park admission to get there.

Downtown Disney® District

1565 Disneyland Drive | 1/2 mile from ACC
visitanaheim.org/downtown-disney

- Catal
- ESPN Zone
- Naples Risotorante e Pizzeria
- Rainforest Café
- Ralph Brennan's Jazz Kitchen®
- Tortilla Jo's
- Splitville

Disneyland® Hotel

1150 Magic Way | ½ mile from the ACC

- Steakhouse 55
- Trader Sam's Enchanted Tiki Bar



Napa Rose

Disney's Grand Californian Hotel® & Spa

1600 Disneyland Drive | ½ mile from the ACC

At this often Zagat-honored crown jewel of the Orange County culinary scene, French-trained Executive Chef Andrew Sutton tells a Napa Valley story through his frequently changing menu crafted in an exhibition kitchen. Sutton's signature dessert, "Best Ever Hot Chocolate," with premium Scharffen Berger and Valrhona Manjari chocolates, shows his dedication to seducing all the senses. The Wine Spectator-awarded wine list highlights California wines, but also 450 international wines and 1,000 different labels from its a 17,000-bottle cellar.

SPOTLIGHT

Zov's

1801 Katella Ave. | 1 ½ miles from ACC

A culinary institution since 1987, Zov's, which has six Orange County locations, satisfies the food enthusiast with fresh, unique cuisine inspired by Mediterranean, Middle Eastern and American influences and award-winning Chef Zov Karamardian's family traditions. Catering, party platters, boxed lunches and restaurant buy-outs also available.

Anaheim Packing District

440 S. Anaheim Blvd. | Three miles from ACC

visitanaheim.org/anaheim-packing-district

In the restored spaces that were once orange groves, Sunkist® citrus packing facilities and the Packard Motor Car Building at the turn of the century, the city's foodie movement thrives at the Anaheim Packing House and Center Street Promenade. Opened in 2014, the packing house is anchored by a central communal table surrounded by more than 20 artisanal eateries and drinkeries specializing in innovative takes on comfort food. Enjoy live music most nights.

- The Kroft
- Adya
- Umami Burger
- The Chippy
- ECCO PIZZA SHOPPE
- Rolling Boil
- Georgia's
- BXCRC - Underground Wine Society

The RANCH Restaurant & Saloon

1025 E. Ball Rd. | Two miles from ACC

The winner of the 2015 OpenTable Diners' Choice award and the 2015 Golden The Foodie for "Best steak" is renowned for its 36-ounce, bone-in rib chop and the steer-head motifs looming over the darkly lit leather booths. Award-winning chef Michael Rossi serves up local farm-to-table fare and beef from its own ranch in the Santa Ana Mountains. Master sommelier Michael Jordan oversees an extensive wine cellar that received the 2015 Wine Spectator Award of Excellence. Live country music acts perform on The RANCH Saloon's 40-foot concert stage and in front of a 47-by-26-foot dance floor.

The Catch Restaurant

2100 E. Katella Ave., #104 | 2 ½ miles from ACC

A popular gathering spot near sports and entertainment venues, The Catch offers a menu of American classics and 14 flat screens on which you can "catch" a game. Enjoy Wagyu Kobe beef, sustainable seafood, a captain's wine list, a comfortable bar with 20 craft beers and a cigar-friendly patio with fire pits.

DOWNTOWN SANTA ANA/4TH STREET

Just 10 minutes from Anaheim and in the county seat, this hipster-magnet gastroheaven and artists village offer a growing collection of new, innovative eateries and craft-beer and craft-cocktail drinkeries all within walking distance.

- Chapter One
- VLVT Lounge
- Olde Ship
- Crave Restaurant



Photo courtesy of Anne Watson Photography

Playground

Santa Ana | Seven miles from ACC

Brilliant, young chef Jason Quinn, the second season’s winner of the Food Network’s “The Great Food Truck Race,” pushes cuisine into an uncharted realm with a rotating, ingredient-driven, technique-heavy menu of New American small plates made for sharing. The gustatory adventure, open kitchen, communal seating and beer menu (15 taps, 60-bottle list) led Open Table to put Playground among “America’s Top 100 Restaurants for Foodies.”

SPOTLIGHT

Kutsi Cocina

Santa Ana | Six miles from ACC

A second-generation chef with Food Network appearances on “Cutthroat Kitchen” and “Guy’s Grocery Games”, Chris Tzorin draws from his Mexican heritage for authentic enchiladas.

Try the tapas of Calamari Tricolor or Mexican Sweet Corn, the street tacos and entrees of Crepas con Duck Confit and Seafood Relleno, a fresh pasilla pepper stuffed with scallops, shrimp, crab and el diablo sauce.

OLD TOWNE ORANGE

Orange | Six miles from ACC

This historic district, home to Chapman University, offers a walkable world of eats alongside vintage shops, galleries and markets who’ve grown up with the city. One restaurant — Watsons Drug & Soda Fountain — opened in 1899 and has a 1950s-style soda fountain and was the backdrop for the film “That Thing You Do.” Another — Zito’s — is known for having the county’s “Best Pizza” (MyFoxLA’s Hotlist). And another – Old Town Grinder — has more than 2,000 bottled sodas.

- Citrus City Grille
- Cafe Lucca
- Felix Continental Café
- Old Towne Grinder
- Watsons Drug & Soda Fountain
- Zito’s New York Style Pizza

Orange Hill Restaurant

Orange | 10 miles from ACC

Perched atop the hills of Orange County, diners will feast upon sweeping views of Catalina Island, Disneyland® fireworks, sunsets and surrounding Southern California as much as the prime, aged steaks, the chateaubriand, miso-marinated Chilean sea bass and Sunday brunch.

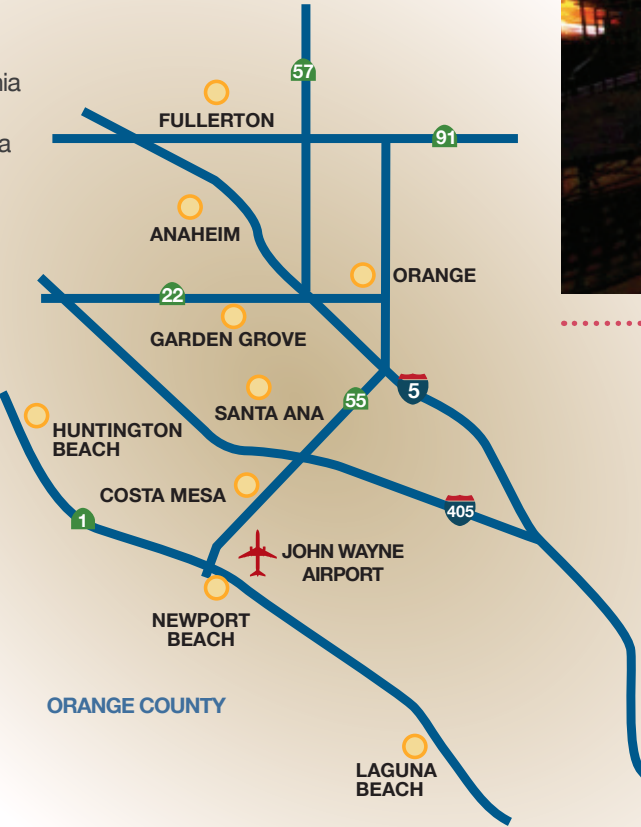
GARDEN GROVE

In this city, five miles from the ACC, you’ll find plenty of authentic Vietnamese cuisine in mom-and-pop eateries, many offering pho (noodle soup), handmade tofu and café sua dá (French roast with sweetened condensed milk).

Brodard

Garden Grove | Five miles from ACC

The most popular Vietnamese restaurant in Orange County offers family-style cooking with more than 100 traditional dishes, notably its famous nem nuong (grilled sausage), fresh spring rolls, roasted duck salad and banh xeo (savory filled crepe). Its fine-dining relative, Brodard Chateau, is located in nearby Westminster.



ORANGE HILL RESTAURANT

Vaca

Costa Mesa | 13 miles from the ACC

Vaca is a the latest restaurant from Executive Chef Amar Santana, who has competed as a front-runner on Bravo TV’s award-winning “Top Chef” series. Authentically Spanish, Vaca offers everything from mouthwatering tapas and savory paellas to freshly cut steaks and ocean-caught seafood. Ninety percent of the food is jet-flown from Spain. Some of the savory dishes are Paella De Mariscos, with a healthy serving of ocean-caught clams, mussels, shrimp and octopus with saffron bomba rice. The Paleta Iberica Fermin is thinly sliced shavings of cured Iberian boneless ham shoulder. The steaks are sourced from Aspen Ridge Farms in Colorado and are cooked over a crackling orange wood-burning fire. Santana runs a kitchen that prides itself with hard work and passion. “This is heaven,” said Santana, when asked of what work feels like managing Vaca. “This isn’t work for me.”

SOUTH COAST PLAZA

Costa Mesa | 13 miles from the ACC

Recognized internationally for its sophisticated collection of more than 250 boutiques and luxury department stores, South Coast Plaza is also world-famous for its award-winning, upscale restaurants.

- Antonello Ristorante
- Royal Khyber Fine Indian Cuisine
- Darya
- Capital Grille
- Seasons 52 Fresh Grill
- Morton’s The Steakhouse
- Mastro’s Steakhouse
- Water Grill

Taco Maria

Costa Mesa | Nine miles from ACC

Even with the kitchen, dining room and patio accommodating only a dozen people or so, Executive Chef Carlos Salgado is taking West Coast-style Chicano flavors and thinking big. Named Food & Wine “Best New Chef” in 2015 and a James Beard Award semifinalist, Orange County-native Salgado handles each locally sourced ingredient with extreme care, showing a precision of technique that matches his creativity and flavor. The smoked marlin taco, trout with green mole and pork belly with grilled cactus are among the attractions.



VACA

SPOTLIGHT



BXCR - UNDERGROUND WINE SOCIETY
ANAHEIM PACKING DISTRICT

DOWNTOWN FULLERTON

Fullerton | Five miles from ACC

As home to Cal State Fullerton and Fullerton College, you'll get the campus feel but also more than the basics of a colleegetown dining hangout. Okay, your trip might begin with a great burger joint in Burger Parlor, where ex-Bastide chef Joseph Mahon reinvents the sizzling ground beef patties and creative toppings into masterpieces inside sweet, griddle-toasted buns.

- Burger Parlor
- Florentine's Grill
- Heroes Bar & Grill
- The Olde Ship British Pub & Restaurant
- Slide Bar
- Trib une
- Twisted Vine - Wine Bar



For more information, whet your appetite at visitanahaim.org/dine

IRVINE SPECTRUM

670 Fortune Drive
Irvine | 17 miles from ACC

One of Orange County's top entertainment, shopping and lifestyle destinations, the Spectrum has more than 130 stores, the Edwards Irvine Spectrum 21 IMAX & RPX theatre, a comedy club, a 108-foot Giant Wheel and carousel. The center has increasingly become home to the latest quick/casual dining and chef-driven concepts. Try TLT Food, the brick-and-mortar version of Food Network's The Great Food Truck Race winner, The Lime Truck, which offers New American cuisine on small plates.

- California Pizza Kitchen
- CUCINA enoteca
- Del Frisco's Grille
- Izakaya Wasa Sushi
- Javier's
- TLT Food
- Umami Burger
- Urban Seoul



UMAMI BURGER
ANAHEIM PACKING DISTRICT

FASHION ISLAND

327 Newport Center Drive
Newport Beach | 18 miles from ACC

This is where the well-heeled go to sip and savor but also enjoy something sunny and social near the coast. Orange County's premier coastal shopping destination has more than 60 stores found nowhere else in Orange County along with an impressive lineup of exclusive boutiques, world-class stores, top-tier restaurants and casual outdoor cafes.

- Blue C. Sushi
- Fleming's Prime Steakhouse & Wine Bar
- Canaletto Ristorante Veneto
- FIG & OLIVE
- Great Maple
- Hana Grill
- Red O
- R+D Kitchen
- Roy's
- True Food Kitchen

Studio at the Montage

Laguna Beach | 27 miles from ACC

Savor Chef Craig Strong's modern French cuisine with California influences that take full advantage of our region's organic farms and the finest seasonal and artisanal products. Indulge in the dining experience with Strong's ever-changing menu, expert wine pairing and the Studio's impeccable service in a Craftsman-style restaurant overlooking the Pacific. The Studio has been honored as a 2016 James Beard Award Semifinalist for "Outstanding Wine Program" and featured among the "100 Best Wine Restaurants in America" by Wine Enthusiast.



Sushi Roku

SPOTLIGHT

Fashion Island

Voted the "Best New Restaurant" in 2015 by the Orange County Register, this Hollywood original pushes American-style sushi into a new realm. Try the happy hour favorite: a sampler of new-style sushi, which might include kumquat and citrus vinegar-kissed fluke. The selection changes regularly but there are some decadent mainstays such as the tofu with truffles or the soba noodles rolling in a rich cream sauce and topped with sea urchin roe.

A nighttime photograph of the Anaheim Convention Center. The building is a large, modern structure with a curved facade and many windows, some of which are illuminated from within. In the foreground, there is a large fountain with many jets of water spraying upwards. To the left of the fountain, there are several tall palm trees. A signpost is visible near the fountain, listing directions to various parts of the convention center. The sky is dark, and the overall scene is lit up by the building's lights and the fountain's lights.

Visit Anaheim

2099 S. State College Blvd. Suite 600

P.O. Box 4270 Anaheim, CA 92806

714.765.2800 | visitanahaheim.org/meetings

email: convention.sales@visitanahaheim.org