

# VISIT ANAHEIM'S IPW SUPPLIER DIRECTORY 2026





# VISIT ANAHEIM DELEGATION

## IPW 2026

### TOURISM

---



**Adriel Terbeche**

Vice President, Tourism  
and International Sales

aterbeche@visitanahaem.org  
United Kingdom & Europe



**Kathy Abrams**

Director, Tourism Development

kabrams@visitanahaem.org

Operations, Events,  
& Domestic OTAs



**Michael Young**

Director, Tourism Development

myoung@visitanahaem.org

Canada, Australia, New Zealand,  
Domestic, & Student Youth



**Firoozeh Tahmassebi**

Director, Tourism Development

ftahmassebi@visitanahaem.org

Asia, Mexico, Middle East, Domestic,  
Receptive Tour Operators & Luxury



**Carlos Allende**

GMS - Visit Anaheim  
Mexico Representative



**Desi Leal**

Specialist, Tourism Development

dleal@visitanahaem.org

### COMMUNICATIONS

---



**Bre Flores**

Manager, Communications

bflores@visitanahaem.org



On behalf of Visit Anaheim, it is my pleasure to welcome you to IPW 2026. We're proud to be part of this global gathering and to continue building strong relationships across the travel industry.

Visit Anaheim remains deeply committed to supporting our partners across all markets.

Our goal is to help connect you with our supplier community and provide the tools and inspiration needed to bring Anaheim to life for your clients.

Anaheim's central location makes it an ideal home base for a Southern California experience, with easy access to beaches, major attractions, and surrounding destinations. Paired with our warm, welcoming community, we're ready to create memorable stays for your guests.

We are also entering our Golden Decade, a time of significant growth and investment. From OCVIBE and the continued evolution of the *Disneyland*<sup>®</sup> Resort to our role in the 2028 Olympic Games, Anaheim's momentum continues to build.

As we look ahead, we're focused on strengthening existing partnerships, building new ones, and inspiring fresh ways to experience our destination, all while looking toward the road to IPW 2030.

Thank you for your partnership. We look forward to working together and welcoming your guests to Anaheim.

Sincerely,

A handwritten signature in black ink, appearing to read "Mike Waterman", written in a cursive style.

**Mike Waterman**

President & CEO | Visit Anaheim



# ANAHEIM: YOUR ULTIMATE BASECAMP FOR EVERY SOCIAL ADVENTURE

**ANAHEIM** is more than a destination — it's where every Southern California adventure begins. From world-famous theme parks to local gems and iconic day trips, this is where dreamers, foodies, and fun-seekers find their stride. Whether you're planning a family vacation, a romantic escape, or a celebratory holiday, Anaheim delivers a one-of-a-kind backdrop for creating unforgettable memories — all while keeping the rest of Southern California within easy reach.

## SAFE. WALKABLE. CONNECTED. AND EASY TO EXPLORE

The Anaheim Resort area is designed for ease and discovery. With many hotels located just steps from *Disneyland*® Resort, it's easy to immerse yourself in the heart of the magic.



## FLAVORS THAT TELL A STORY

Anaheim's culinary culture is rich with diversity and creativity.

- Anaheim Packing House, once a 1920s citrus packing facility, is now a buzzing food hall with over 30 vendors offering everything from ramen to craft cocktails in a hidden speakeasy.
- Nearby Center Street Anaheim, visitors will discover eclectic finds like the shipwreck-themed tiki bar Strongwater and the fresh, buttery breads of Okayama Kobo Bakery.



## ROOFTOP VIEWS AND BREWERIES THAT WOW

Raise a glass to adventure at one of Anaheim's rooftop bars, each offering a unique perspective on the city below. Whether it's the stylish RISE Rooftop Lounge, Parkestry Rooftop Bar, The FIFTH Rooftop Restaurant, or the lively Top of the V, these venues deliver sky-high vibes and expertly crafted menus. Anaheim is also home to the most breweries in Orange County, celebrating a brewing heritage that continues to evolve with bold flavors, creative collaborations, and inviting spaces perfect for pre-game sips or casual afternoons.



## FOR THE LOVE OF THE GAME

Sports fans will find their happy place in Anaheim. Hockey lovers can catch the Anaheim Ducks® at Honda Center, while baseball enthusiasts can spend a sunny afternoon cheering on the Angels® at Angel Stadium of Anaheim. For a more private experience, premium seating and suites are available.

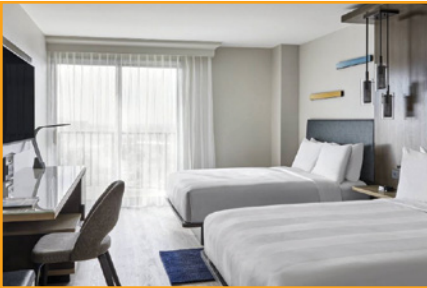
## WHAT'S NEXT FOR ANAHEIM

Anaheim's future shines as brightly as its present. Major developments, such as OCVICE, an innovative district around the Honda Center, are reshaping the city into a cutting-edge entertainment destination. This area will include live music venues, exceptional dining, vibrant parks, and engaging art installations, creating a unique fusion of culture and community. This venue is set to open in phases beginning in 2027, giving travelers even more reason to visit — and revisit — Anaheim in the coming years.

## ADVISOR INSIGHTS

Anaheim is easily accessible with five nearby airports—John Wayne (SNA), Long Beach (LGB), Los Angeles International (LAX), Ontario (ONT) and Cross Border Xpress (CBX)—offering travelers a range of convenient options for getting to the heart of Southern California.

## ANAHEIM MARRIOTT



Anaheim Marriott offers an ideal home base for travelers seeking comfort, convenience, and elevated service in the heart of Anaheim. Located steps from the Anaheim Convention Center and just minutes from *Disneyland*<sup>®</sup> Resort, the hotel places guests near Southern California's most iconic attractions, dining, and entertainment. Spacious, modern guest rooms provide a relaxing retreat, while on site dining options, including a lively lobby bar and restaurant, make it easy to unwind without leaving the property. Guests can also enjoy a resort style outdoor pool and fully equipped fitness center. The hotel's central location provides easy access to Orange County's renowned beach communities, including Newport Beach and Huntington Beach, as well as convenient proximity to SNA, LGB, and LAX airports. Whether visiting for business or leisure, Anaheim Marriott delivers a refined stay with exceptional service in an unbeatable location.

- 10-Minute walk to *Disneyland*<sup>®</sup> with dining nearby
- Three onsite dining options, casual to cocktails
- Resort-style pool and 24-hour fitness center

**CONTACT**

Elizabeth (Lizzy) Casey | Sales Executive

[elizabeth.h.casey@marriott.com](mailto:elizabeth.h.casey@marriott.com)[marriott.com/laxah](https://marriott.com/laxah)

**ELEMENT BY WESTIN ANAHEIM  
RESORT CONVENTION CENTER**

Element by Westin Anaheim Resort is the perfect home base for families visiting *Disneyland*®. Just a 10 minute walk from the park, our all suite accommodations give you space to spread out and relax after a full day of adventure. Our spacious rooms sleep up to six guests, with multiple bunk bed options and one that can accommodate eight, so the whole family can stay together comfortably. Each room includes a fully equipped kitchen, separate living area, and signature Westin Heavenly Beds to recharge for another day of fun. Start your mornings with complimentary breakfast, head out to explore the magic, and return to unwind with our complimentary evening Relax Hour featuring locally sourced beer, wine, and small bites. As a Disney Good Neighbor Hotel, we provide a trusted and convenient stay, giving families the freedom to make the most of every moment. At Element by Westin Anaheim Resort, it's all about space, comfort, and creating memories that last long after the fireworks fade.

- **Complimentary Daily Breakfast Buffet**
- **10 minute walk to *Disneyland*® Parks**
- **Spacious Suites Sleep 6 to 8**

**CONTACT**

Julienne Shimono | Director of Sales & Marketing  
julienne.shimono@marriott.com  
[marriott.com/snael](https://www.marriott.com/snael)

**FOUR POINTS BY SHERATON  
ANAHEIM**

Four Points by Sheraton Anaheim is a well-positioned hotel in the heart of the *Disneyland*® Resort area, offering comfort, convenience, and value for both leisure and group travelers. Located just a short walk to the main entrance of *Disneyland*® Park and near the Anaheim Convention Center, the hotel provides easy access to top attractions, dining, and entertainment.

The property features spacious guest rooms, many with views of *Disneyland*® fireworks, along with essential amenities including complimentary Wi-Fi, an outdoor heated pool, and on-site dining options. Designed with group travel in mind, the hotel offers flexible room block options, competitive rates, and a dedicated sales team to support tour operators, wholesalers, and meeting planners.

Whether hosting student groups, international travelers, or corporate programs, Four Points Anaheim delivers a reliable and comfortable stay in one of Southern California's most in-demand destinations.

- 10-Minute walk to *Disneyland*® with dining nearby
- Three onsite dining options, casual to cocktails
- Resort-style pool and 24-hour fitness center

**CONTACT**

Dy Moncada | Sales & Catering Manager  
dy.moncada@fourpointsanaheim.com  
fourpointsanaheim.com

## HOTEL LULU BW PREMIER COLLECTION



Centrally Located and walking distance between the Anaheim Convention Center (10-minutes) and Disneyland® resort and Disney California Adventure® Park (12-Minutes), Hotel Lulu presents both worlds of corporate and leisure travel. Hotel Lulu boasts 308 rooms with most of those queen /queen size beds (200) as well as a beautiful pool, 24 hr. work out facility and coin operated laundry facility. Our hotel is also walking distance to over 20 restaurants and night time entertainment at the Anaheim Garden Walk and another 20 restaurants within a 5-mile radius of hotel. When you're ready for some sun and sand, Huntington State Beach is just a short 15-minute drive away for the ultimate California adventure!

- Walking distance to Anaheim Convention Center - 10 min.
- Walking Distance to Disneyland® - 12 min.
- 200 Double/Double rooms available



### CONTACT

Dan Correa | Director of Sales  
dan@hotellulu.com  
hotellulu.com

## HYATT REGENCY ORANGE COUNTY



Hyatt Regency Orange County is the ultimate destination for your vacation. Located just 1.4 miles from the *Disneyland*<sup>®</sup> Resort, our hotel offers shuttle service to and from the parks and is in close proximity to Angel Stadium, the Honda Center, and many other Orange County attractions. Each room features a mini-fridge, oversized desk, 65" flat screen TV, laptop safe, and other amenities. Try our Kids Suite with bunk beds for the children, and an adjoining private room for parents. Start your day with breakfast at Vita Grill featuring fresh and energizing selections to start your day off right. Grab a refreshing Frappuccino at our full-service Starbucks before boarding our shuttle to the *Disneyland*<sup>®</sup> Resort, and at the end of your day, wind down with a 29-degree beer at Vita Bar. Enjoy our recreation deck which includes pickleball, basketball, and much more. We feature two pools, a hot tub, and firepits.

- Exclusive shuttle to/from *Disneyland*<sup>®</sup> Resort
- Recreation Deck with family-friendly activities
- 5 Dining options, 2 Pools, Hot tub, and Firepits

**CONTACT**

Madison Sharpe | Senior Leisure Travel Sales & Marketing Manager  
madison.sharpe@hyatt.com  
hotellulu.com



JW MARRIOTT, ANAHEIM RESORT

JW MARRIOTT  
ANAHEIM RESORT



JW Marriott, Anaheim Resort is a luxury AAA Four Diamond hotel located in the heart of Anaheim, just a short walk from *Disneyland*® Resort and the Anaheim Convention Center. Designed with a focus on wellness and modern elegance, the resort blends upscale comfort with a vibrant, experience-driven atmosphere. Guests can enjoy amenities such as a rooftop bar with views of nightly fireworks, a serene JW Garden, a yoga and zen studio, and an outdoor pool. The hotel also features multiple dining options, including a signature restaurant offering locally inspired cuisine. Spacious rooms and suites provide plush bedding and contemporary technology, catering to both families and business travelers. With over 40,000 square feet of event space and proximity to entertainment, shopping, and dining, the hotel serves as an ideal destination for both leisure and professional stays.

- Prime location near *Disneyland*®
- Luxury wellness-focused amenities
- Upscale dining and rooftop experience



**CONTACT**

Winston Cuan | Director of Sales & Marketing  
Winston.Cuan@JWanaheim.com  
[marriott.com/snajw](https://marriott.com/snajw)

## OCVIBE DISTRICT



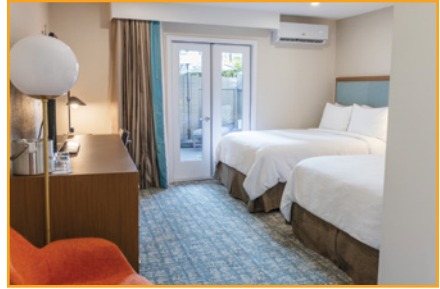
OCVIBE is a dynamic, next-generation entertainment and lifestyle district in Anaheim designed to bring people together through shared experiences. Anchored by Honda Center, the district blends world-class sports, live entertainment, culinary innovation, and immersive public spaces into one vibrant destination. OC VIBE features curated dining concepts, open-air gathering areas, live music venues, and year-round programming that creates an energetic atmosphere for visitors and locals alike. With a focus on connectivity, culture, and community, the district is designed to be walkable, engaging, and ever-evolving. Whether attending a major concert, enjoying a chef-driven meal, or exploring interactive spaces, guests can experience the best of Southern California in one place. OC VIBE represents the future of entertainment districts—where sports, music, food, and social experiences seamlessly come together in the heart of Orange County.

- Next-gen entertainment district
- Dining, music & events year-round
- Steps from Honda Center

**CONTACT**

Marissa Weber | Special Events Sales Manager  
mweber@ocvibe.com  
ocvibe.com

THE ANAHEIM HOTEL



The Anaheim Hotel is a 306 room, full service, mid-century modern hotel on nine acres of gardens. We are located on Harbor Boulevard, across the street from *Disney California Adventure*® Park, Downtown *Disney*® District and next door to the GardenWalk™, an outdoor mall featuring over 20 restaurants. We offer a shuttle, motorcoach parking, dining at Pizza Press, via room service, poolside, at the Front Room Lounge and at Top Golf Swing Suites. Our Olympic sized swimming pool is surrounded by a jacuzzi and cabanas. We feature a fitness room, card operated laundry facilities, a business center, concierge services, a game green and Top Golf Swing Suite bays.

- 10-minutes' walk to the *Disneyland*® Resort
- Sports simulator, pool cabanas, and lawn games
- Mid-century design and refreshed guest rooms



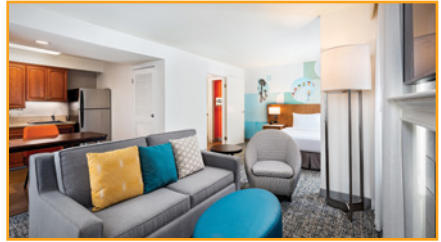
**CONTACT**

Tina Riley | Director of Sales & Marketing  
triley@theanaheimhotel.com  
theanaheimhotel.com



CLEMENTINE HOTEL & SUITES ANAHEIM RESORT

We're not a typical hotel. Just a 10-minute walk to the Disneyland® Resort and a short drive to the Angels stadium and Honda Center, Clementine Hotel & Suites offers a unique hospitality experience for guests that want an atypical stay. We add enthusiasm and encouragement to every encounter and peel open pathways for our guests to embrace the happy moments that await them. When you stay at Clementine Hotel & Suites, you will experience something unlike anything else in Anaheim. Here, comfort and convenience lead your stay, with family-friendly accommodations including an open community layout, cozy living



areas, full kitchens, and luxurious beds – all designed to make your stay perfect.

Family Friendly all suite property with large suites that sleep up to 8 people, just a 10-minute walk to the Disneyland® Resort, and a short drive to Angel Stadium and Honda Center, enjoy our breakfast buffet each morning.

CONTACT

Charlene Shaw | Director of Sales
Charlene.shaw@aimbridge.com
clementinehotel.com



DESERT PALMS HOTEL & SUITES

The Desert Palms Hotel is conveniently located half a block (a short 10-minute walk) from Disneyland® Resort main entrance. Offerings include kid suites with bunk beds, studio suites, kitchen suites and family suites accommodating up to 8 guests. Enjoy a daily complimentary hot breakfast buffet and try our home-made fresh salsa with ingredients from our rooftop vegetable garden. Facilities include an outdoor heated pool, hot tub, restaurant, exercise room, business center with luggage weighing scale, gift shop, laundromat, water refill stations, interior corridors



and kids area with books, games, scavenger hunt and seasonal kids craft activities.

CONTACT

Marie D Enriquez | VP Sales
marie@hansji.com
DesertPalmsHotel.com

**HOMEWOOD**  
**SUITES** by Hilton™

**HOMEWOOD SUITES BY HILTON ANAHEIM MAINGATE**

Newly renovated Good Neighbor Hotel less than 2-miles from the *Disneyland*® Resort. Shuttle service to parks is available for a fee on the Garden Grove Transit.

All Suites hotel, featuring 166 family-friendly accommodations with separate bedroom, private bathroom, and extensive closet space. Relax in the spacious living room with 65-inch smart TVs and full kitchens.

Suites accommodate up to five persons, featuring 2 queen beds or 1 king bed, and a full-size sofa sleeper. Complimentary breakfast buffet



daily and evening reception on Wednesdays with light fare and complimentary beverages.

Outdoor resort-style pool and whirlpool. Patio with barbecues. Fitness room and self-service laundry available.

**CONTACT**

Ken Beck | Area Director of Sales  
 Ken.beck@hilton.com  
[homewoodsuitesanaheim.com](http://homewoodsuitesanaheim.com)



**HOWARD JOHNSON ANAHEIM HOTEL & WATER PLAYGROUND**

Howard Johnson Anaheim Hotel & Water Playground offers a vibrant, family-friendly stay within walking distance of the *Disneyland*® Resort, no shuttle needed, set within a property originally designed by renowned modernist architect William Pereira. Currently in the final phase of a multi-stage renovation, the hotel blends refreshed guest rooms with its iconic mid-century character. Featuring spacious accommodations, themed Kids Suites, Castaway Cove water playground, and select rooms with *Disneyland*® fireworks views, HoJo Anaheim delivers added value and thoughtful experiences designed to make every stay memorable for families, groups, and international travelers.



**CONTACT**

Heather Rad | Director of Sales and Marketing  
 Heather@hojoanaheim.com  
[hojoanaheim.com](http://hojoanaheim.com)



**SOUTH COAST PLAZA**

South Coast Plaza defines the luxury shopping experience with extraordinary boutiques, personal shopping services, and upscale amenities, all within a short distance of the world's most magnificent beaches and vacation resorts. A leading international shopping destination, South Coast Plaza is home to more than 250 prominent brands, including Hermes, Chanel, Louis Vuitton, Dior, Loewe, Harry Winston, Celine, Maison Margiela, Gucci, Cartier, Rolex, and Graff, as well as critically acclaimed restaurants and the



adjacent Segerstrom Center for the Arts and Orange County Museum of Art.

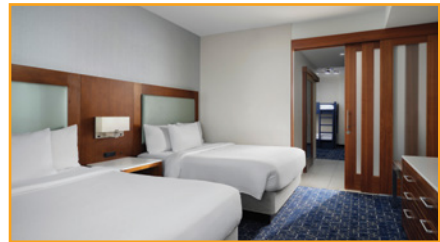
**CONTACT**

Brian Chuan | Senior Director of International and Domestic Markets  
 ChuanB@southcoastplaza.com  
[southcoastplaza.com](http://southcoastplaza.com)



**SPRINGHILL SUITES BY MARRIOTT ANAHEIM RESORT/CONVENTION CENTER**

Make memories at the Springhill Suites by Marriott Anaheim Resort/Convention Center. Centrally located with an easy 10-minute walk to Disneyland® theme park. Families love our spacious suites equipped with microwaves, mini refrigerators, and well-lit large bathrooms. "Suite" dreams are made in our refreshed and updated Kids' Suites. These rooms feature bunk beds and sleep up to 7 guests. Enjoy our free hot breakfast buffet daily. Our rooftop pool deck features spectacular firework views and is the perfect place to unwind after a long day of vacation fun!



**CONTACT**

Heather Ryan | Dual Director of Sales  
 heather.ryan@springhillanaheim.com  
[springhillanaheim.com](http://springhillanaheim.com)

# Residence INN<sup>®</sup>

BY MARRIOTT

## RESIDENCE INN BY MARRIOTT ANAHEIM RESORT/CONVENTION CENTER

Discover the magic at Residence Inn Anaheim Resort/Convention Center. Families love our spacious suites with separate living and sleeping areas providing more room to relax and feel at home. "Suite" dreams are made in our popular Kids' Suites. These brightly themed rooms feature bunk beds and a separate "kid friendly" bathroom. A fully equipped kitchen is offered in every suite and ready for your favorite cuisine. Enjoy our free bountiful hot breakfast buffet daily. Our rooftop pool with sweeping area views, hot tub, cabanas and kid friendly splash zone is the perfect place to unwind after a long day of vacation fun.



### CONTACT

Heather Ryan | Dual Director of Sales  
heather.ryan@springhillanaheim.com  
[marriott.com/snaar](http://marriott.com/snaar)

# THE WESTIN

ANAHEIM RESORT

## THE WESTIN ANAHEIM RESORT

Discover a sanctuary of wellness and relaxation in the heart of Orange County, just moments from the Disneyland<sup>®</sup> Resort and less than 3 miles from Angel Stadium. Unwind in luxurious comfort with our signature Westin Heavenly<sup>®</sup> Beds, designed for the perfect night's rest. Savor a variety of exceptional dining experiences, including our stunning rooftop lounge with views of Disney's California Adventure<sup>®</sup> Park. Lounge by our outdoor pool in a private cabana or keep up with your fitness routine in the 24-hour Westin WORKOUT<sup>®</sup> Fitness Studio.



Whether you're visiting for business or leisure, let us make your stay truly unforgettable.

### CONTACT

Ashley Lee | Senior Leisure Sales Manager  
ashley.lee@westinanaheim.com  
[westinanaheim.com](http://westinanaheim.com)

## ANAHEIM MARRIOTT

**Elizabeth Casey**, Sales Executive  
Elizabeth.H.Casey@marriott.com  
marriott.com/laxah

| **Booth 1524**

## ANAHEIM PORTOFINO INN & SUITES

**Carolina Basora**, Director of Sales  
carolina.basora@lodgingdynamics.com  
anaheimportofinoinnandsuites.com

| **Booth 1527**

## AQUARIUM OF THE PACIFIC

**Sarah Brainard**, Director of Sales  
SBrainard@LBAOPORG  
aquariumofpacific.org

| **Booth 1630A**

## BEST WESTERN STOVALL'S HOTELS OF ANAHEIM

**Mark Harrison**, Sales Manager  
markharrison@stovallshotels.com  
stovallshotels.com

| **Booth 1525**

## CATALINA EXPRESS

**Adriana Galvan**, Director of Sales  
agalvan@catalinaexpress.com  
CatalinaExpress.com

| **Booth 1630B**

## CITADEL OUTLETS/ LOS ANGELES

**Cynthia Schmitt Easey**, Director,  
Global Sales & Marketing  
Cynthia@EaseyGlobalMarketing.com  
citadeloutlets.com

| **Booth 2560A**

## CLARION HOTEL ANAHEIM RESORT

**Jackie Parra**, Sales Manager  
mparra@clarionanaheimca.com  
clarionanaheim.com

| **Booth 1523**

## CLEMENTINE HOTEL & SUITES ANAHEIM

**Charlene Shaw**, Director of Sales  
Charlene.Shaw@aimbridge.com  
clementinehotel.com

| **Booth 1523**

## DESERT PALMS HOTEL & SUITES

**Marie Enriquez**, VP Sales  
Marie@hansji.com  
desertpalmshotel.com

| **Booth 1815**

## DISNEYLAND® RESORT

**Becky Bell**, Senior Event Manger,  
Strategic Meetings & Events  
disneyland.com

| **Booth 2604**

## ELEMENT BY WESTIN ANAHEIM RESORT CONVENTION CENTER

**Julienne Shimono**, Director of  
Sales & Marketing  
julienne.shimono@marriott.com  
marriott.com/snael

| **Booth 1524**

## FOUR POINTS BY SHERATON ANAHEIM

**Dy Moncada**, Regional Group and  
Events Sales Director  
dy.moncada@fourpointsanaheim.com  
fourpointsanaheim.com

| **Booth 1524**

## HAMPTON INN & SUITES ANAHEIM/GARDEN GROVE

**Ken Beck**, Director of Sales  
ken.beck@hilton.com  
hamptoninnanaheim.com

## HARD ROCK CAFE

**Michael Casillas**, National Sales Manager  
Michael.Casillas@hardrock.com  
hardrock.com

| **Booth 2520**

## HILTON ANAHEIM

**Molly Tomita**, Senior Sales Manager  
Molly.Tomita@hilton.com  
hiltonanaheimhotel.com

| **Booth 1630C**

## HILTON GARDEN INN ANAHEIM/ GARDEN GROVE

**Ken Beck**, Director of Sales  
ken.beck@hilton.com  
anaheimhgi.com

## HOLIDAY INN & SUITES ANAHEIM

**Stella Pak**, Director of Sales  
stella.pak@hianaheim.com  
hianaheim.com

| **Booth 1527**

## HOTEL LULU BW PREMIER COLLECTION

**Dan Correa**, Director of Sales  
dan@hotellulu.com  
hotellulu.com

| **Booth 1524**

## HOWARD JOHNSON ANAHEIM HOTEL & WATER PLAYGROUND

**Heather Rad**, Director of Sales  
and Marketing  
heather@hojoanaheim.com  
hojoanaheim.com

| **Booth 737**

## HYATT REGENCY ORANGE COUNTY

**Madison Sharpe**, Leisure Travel  
Sales Manager  
madison.sharpe@hyatt.com  
orangecounty.regency.hyatt.com

| **Booth 1524**

## LEGOLAND CALIFORNIA RESORT

**Bryan Garber**, Head of Sales & Strategic  
Partners, North America  
Bryan.Garber@legoland.com  
legoland.com/California

| **Booth 1864**

## MAVERICK HELICOPTERS

**Mynor Guerra**, Vice President  
Business Development  
flymaverick.com

| **Booth 1113**

## OCVIBE

**Marissa Weber**, Special Events,  
Sales Manager  
mweber@ocvibe.com  
hondacenter.com

| **Booth 1524**

## SAN DIEGO ZOO & SAN DIEGO SAFARI PARK

**Jay Judal**, Director, Outside Sales  
jjudal@sdzwa.org  
sdzwa.org

| **Booth 1533**

## SEAWORLD SAN DIEGO

**Jackie Plaza**, Vice President of Marketing  
jackie.plaza@seaworld.com  
seaworld.com

| **Booth 2024**

## SONESTA INTERNATIONAL HOTELS

**Laura Castro**, Complex Director of Sales & Marketing  
Laura.Castro@Sonesta.com  
sonesta.com

| **Booth 917 & 918**

## SOUTH COAST PLAZA

**Brian Chuan**, Senior Director of International and Domestic Markets  
ChuanB@southcoastplaza.com  
southcoastplaza.com

| **Booth 1728**

## UNIVERSAL STUDIOS HOLLYWOOD

**Ali Schmidt**, Senior Director Sales  
Ali.Schmidt@nbcuni.com  
universalstudioshollywood.com

| **Booth 1532**

## USS MIDWAY MUSEUM

**Joseph Wagstaff**, Travel Industry Sales Manager  
JWagstaff@MIDWAY.ORG  
midway.org

| **Booth 1535**

## VISIT ANAHEIM

| **Booth 1524**

## VISIT CALIFORNIA

visitcalifornia.com

| **Booth 1314**

## VISIT HUNTINGTON BEACH

**Sophia Valdivia**, Director of Tourism Development  
sophia@surfcityusa.com  
surfcityusa.com

| **Booth 1724**

## WARNER BROS. STUDIO TOUR HOLLYWOOD

**Helen Albrecht**, Trade Account Manager  
Helen.Albrecht@warnerbros.com  
wbstudiotour.com

| **Booth 1004**



*Cindy Smith*  
**PHENOMENATOR**  
*Director of  
Sales & Marketing*

## Going to great lengths to create memorable events.

In a place where expectations are astronomical, nobody brings a more magical touch to the world of conventions than Cindy. Her years of experience, combined with a gifted team, a stunning property and a vast array of meeting spaces, ensures that every experience comes off without a hitch. Add an impressive value factor and you've got someone who's nothing short of heroic.

Contact [sales@majesticgardenhotel.com](mailto:sales@majesticgardenhotel.com) or call (714) 234-2424



ANAHEIM  
**MAJESTIC**  
GARDEN HOTEL  
PREMIER HOTEL COLLECTION

[majesticgardenhotel.com](http://majesticgardenhotel.com)

## Fairfield by Marriott Anaheim

### Your Fresh Stay Awaits

- New Look. New Rooms.
- Complimentary Breakfast
- 7- Minutes to the Magic

**Fairfield**<sup>®</sup>  
BY MARRIOTT

1460 South Harbor Blvd  
Anaheim, CA 92802  
714.772.6777  
[Marriott.com/LAXOC](http://Marriott.com/LAXOC)





Seamless Transportation in LA & Anaheim

AIRPORTS • HOTELS • ATTRACTIONS • PRIVATE TOURS



Scan Me



www.karmel.com

NET RATES AVAILABLE

CONTACT BELINDA TRANI  
BELINDA@KARMEL.COM



# ANAHEIM IS OUTSIDE OF THE ORDINARY



Anaheim is the perfect destination for your fun-filled family vacation. Packed with entertainment options from theme park thrills, exciting eats, delectable desserts, sports & shopping; In Anaheim, your magical memories are waiting to be made.

PLAN NOW

[visitanahaheim.org](http://visitanahaheim.org)





## Southern California Points of Interest

### SHOPPING:

1. Citadel Outlets
2. Fashion Island®
3. Irvine Spectrum Center®
4. Old Towne Orange
5. Outlets at San Clemente
6. South Coast Plaza®
7. The Outlets at Orange

### ATTRACTIONS:

- Disneyland® Resort
- 8. Adventure City
- 9. Anaheim Packing House
- 10. Aquarium of the Pacific®
- 11. Battleship IOWA - Pacific Battleship Center
- 12. Flightdeck + Rogue Racing
- 13. Knott's Berry Farm®/Knott's Soak City®
- 14. LEGOLAND® California Resort

15. Medieval Times® Dinner & Tournament
16. Mission San Juan Capistrano
17. Pirate's® Dinner Adventure
18. Richard Nixon Presidential Library & Museum
19. San Diego Zoo® & Safari Park
20. SeaWorld® San Diego
21. Sesame Place® San Diego
22. Universal Studios Hollywood™
23. USS Midway Museum
24. Warner Bros. Studio Tour Hollywood

### SPORTS:

- 25. Angel Stadium
- 26. Honda Center®
- 27. SoFi Stadium

### AIRPORTS:

- 28. LAX
- 29. LGB
- 30. ONT
- 31. SNA

### CATALINA ISLAND TRANSPORTATION:

- 32. Catalina Express
- 33. Maverick Helicopter Tours



[visitanaheim.org/ipw-resources](https://visitanaheim.org/ipw-resources)

