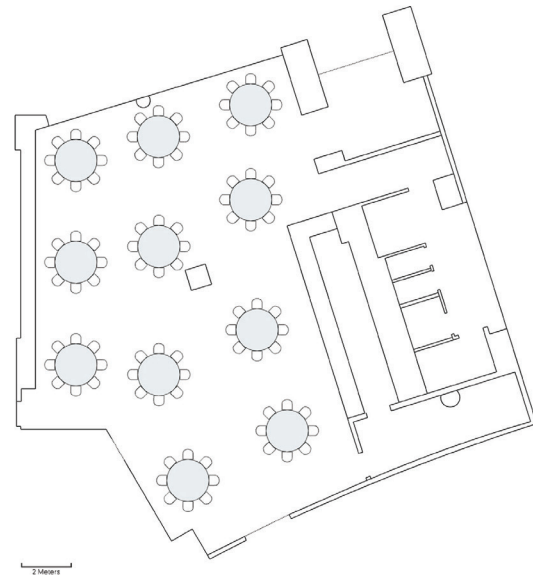


THE ARENA

The arena floor is the ideal venue to host banquets, galas, graduations, award ceremonies and so much more. It is the perfect blank slate.

- Sq. ft.: 24,400 • Capacity: 20,000
- Features: Centerhung video board, ribbon board, sound and lighting



BASSLINE BAR

Bassline Bar offers a stunning setting for meetings, parties and more. With endless options and state-of-the-art A/V capabilities, Bassline Bar is designed to make your event truly special.

- Sq. ft.: 2,000 • Capacity: 148
- Features: Exterior entrance to the space

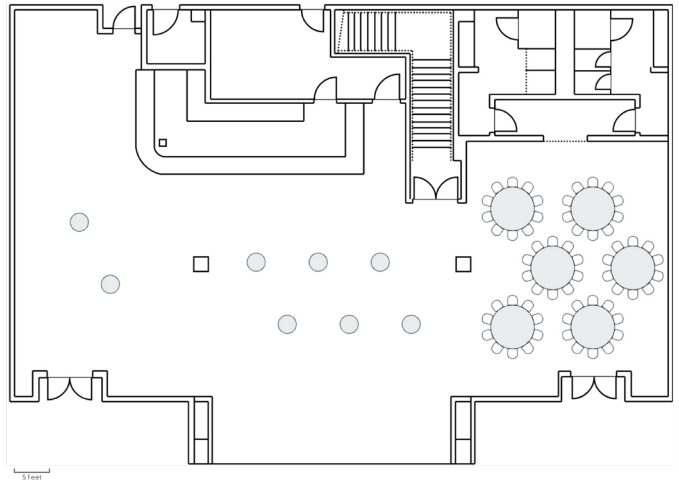
CONTACT: Jenae Nelson - jnelson@deserstdiamondarena.com - Ph : (623) 249-2644

www.deserstdiamondarena.com/private-events



THE LOUNGE

The Lounge provides an upscale atmosphere for unique corporate outings and social events such as pre-functions, happy hours, private dinners or viewing parties.

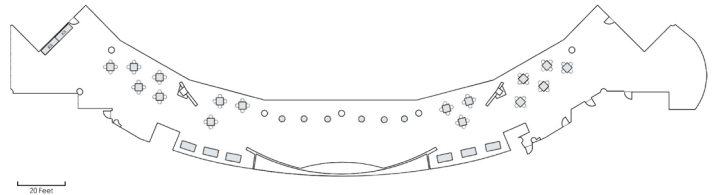


- Sq. ft.: 3,540 • Capacity: 400
- Media: 15 TV screens and built-in audio
- Features: Exclusive club with 2 built-in bars, all-inclusive food and beverage opportunities and private entrance



SOCIAL BAR

Give your guests the perfect atmosphere at the Social Bar. With unparalleled amenities, this flexible space has enough room to accommodate a cocktail party or a corporate meeting while overlooking the arena.



- Sq. ft.: 8,130 • Capacity: 800
- Media: 14 TV's and built-in audio
- Features: Flexible seating space with built-in bar, fine dining and beverage opportunities and private entrance

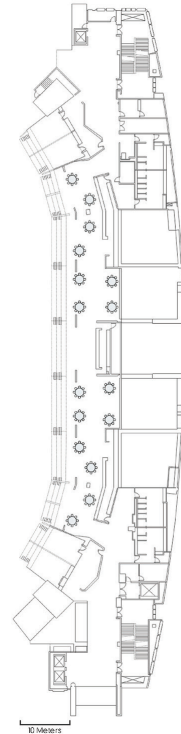
CONTACT: Jenae Nelson - jnelson@desertdiamondarena.com - Ph : (623) 249-2644

www.desertdiamondarena.com/private-events



THE VIEW

Whether it's a meeting, party or networking event, The View offers a stunning setting with catering options to make your event unforgettable. With its inviting bar and open, social atmosphere, The View is designed to make every event special and unique.

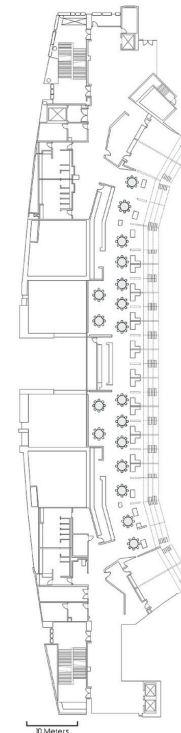


- Sq. ft.: 5,844
- Capacity: 428



ENCORE CLUB

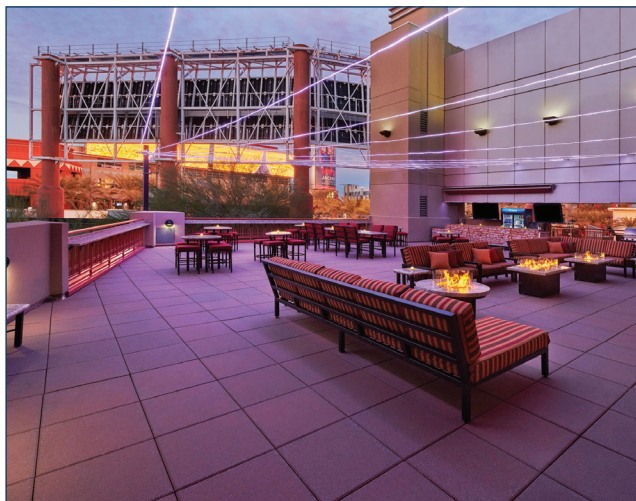
Relive iconic concerts at Encore Club. This exclusive space at Desert Diamond Arena showcases past performances from some of the biggest artists and musicians, offering a unique backdrop for your event. Whether it's meetings, dinners, parties or more, Encore Club is a great space to host your guests with endless opportunities.



- Sq. ft.: 4,922
- Capacity: 394

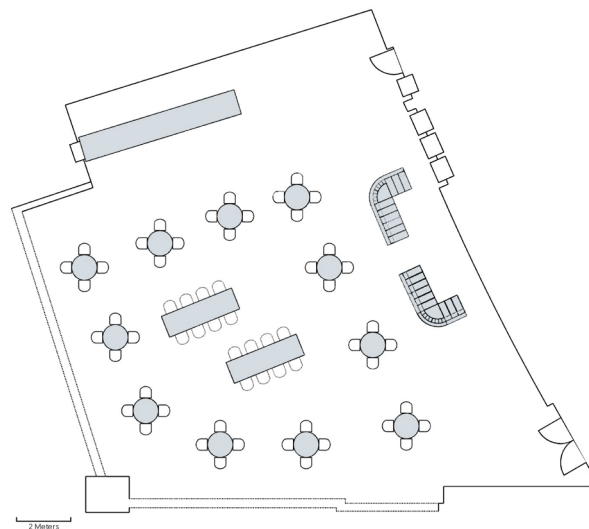
CONTACT: Jenae Nelson - jnelson@desertdiamondarena.com - Ph : (623) 249-2644

www.desertdiamondarena.com/private-events



DESERT DIAMOND TERRACE

Give your guests the gift of scenic views with this exceptional space, featuring sunset views of the White Tank Mountains. Located on the Northwest corner of the arena, the Desert Diamond Terrace offers guests a place to kick back, relax and enjoy the amazing Arizona climate.

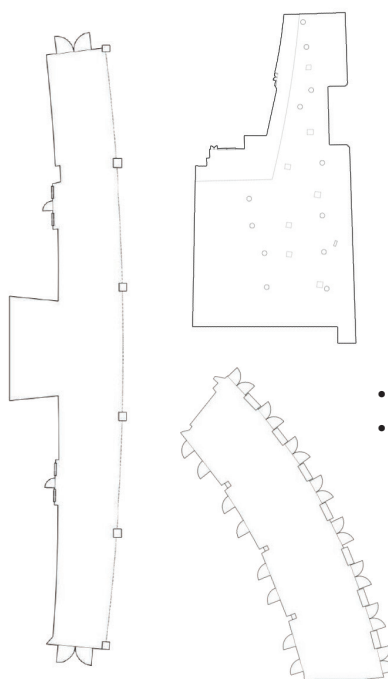


- Sq. ft.: 2,508 • Capacity: 200 • Media: 3 TV screens
- Features: Full-service bar, live music, sunset views, outdoor televisions and built-in AV



OUTDOOR SPACES

Take advantage of our incredible outdoor spaces and the great weather. These spaces are perfect for private dinners and ceremonies that integrate the elements. Need a blank canvas to host the ultimate event? Our sun-filled exterior spaces are an event planner's dream.



- Capacity: Up to 100,000+
- Media: Unlimited possibilities

CONTACT: Jenae Nelson - jnelson@desertdiamondarena.com - Ph : (623) 249-2644

www.desertdiamondarena.com/private-events