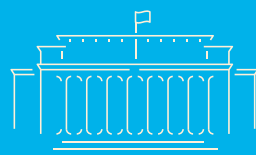




SHEFFIELD INTERNATIONAL CONCERT SEASON 2025/26

Classical Music at Sheffield City Hall



Sheffield City Hall



Join world-class orchestras, soloists and conductors for a celebration of classical music. Bringing to life unforgettable, powerful and spine-tingling masterpieces.



Welcome	5
Sheffield International Concert Season 2025/26	6
Saturday 27 th September 7pm The Hallé	8
Saturday 18 th October 7pm Brno Philharmonic Orchestra	9
Wednesday 5 th November 7pm Royal Liverpool Philharmonic Orchestra	10
Saturday 29 th November 7pm The Hallé	11
Saturday 13 th December 2.30pm Black Dyke Band Sheffield Philharmonic Chorus	12
Friday 23 rd January 7pm The Hallé	13
Friday 6 th February 7pm Manchester Camerata Sheffield Philharmonic Chorus	13
Thursday 19 th February 7pm Czech Janáček Philharmonic	14
Sunday 15 th March 7pm The Hallé	15
Thursday 26 th March 7pm English Chamber Orchestra	16
Friday 17 th April 7pm Spanish Galicia Symphony Orchestra	17
Saturday 9 th May 7pm The Hallé	18
Sunday 7 th June 4pm The Hallé Sheffield Philharmonic Chorus	19
Season Tickets and Flexible Tickets	20
Save money and secure your favourite seats!	20
Tickets	21
Getting Here	22
Access Information	22

Follow us on

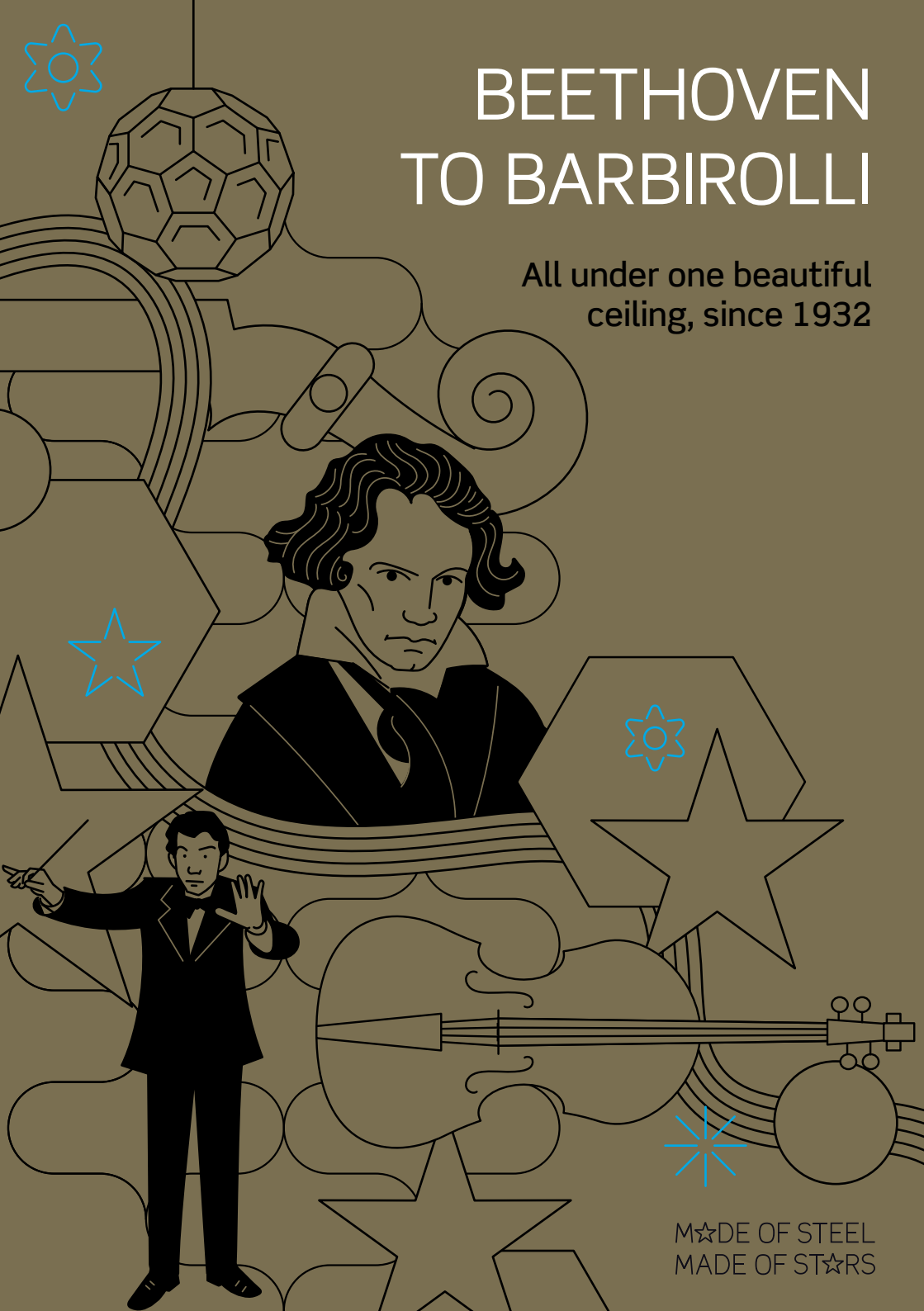
 @sheffcityhall

 @sheffieldcityhall

or join our classical mailing list at
www.sheffieldcityhall.co.uk

BEETHOVEN TO BARBIROLLI

All under one beautiful
ceiling, since 1932



MADE OF STEEL
MADE OF STARS



Welcome

Before we begin the 2025/26 Sheffield International Concert Season, a thank you to you, our audience, for your valued and continued support. You are a key part of the fabric of Sheffield's culture which allows us to bring some of the world's most exciting orchestras and top-class artists to the Steel City.

This season there are thirteen unmissable concerts, from internationally acclaimed orchestras at home and abroad, to inspire and entertain you. The Brno Philharmonic brings a jazz-inspired programme that features perennial Sheffield favourite, pianist Freddy Kempf, whilst the Czech Janáček Philharmonic appears with Shostakovich's towering Tenth Symphony and star violinist Jennifer Pike in Sibelius' Violin Concerto. The first Spanish orchestra in the season for decades, the Spanish Galicia Symphony Orchestra, bathe us in the warmth of a Mediterranean-inspired programme, with top Spanish guitarist Thibaut Garcia performing Rodrigo's famous *Concierto de Aranjuez*.

Kahchun Wong and our wonderful resident orchestra, the Hallé, open the season with Elgar's famous Cello Concerto. Throughout the season, they bring more unmissable works – from Verdi's *The Force of Destiny Overture*, Grieg's Piano Concerto to Walton's First Symphony – before bringing the curtain down on the season with Mendelssohn's epic oratorio, *Elijah*, which features our resident chorus, the Sheffield Philharmonic Chorus.

An integral part of the season, the Chorus also appears in the annual Christmas festivities and with Manchester Camerata, in Arvo Pärt's brilliant choral work, *Adam's Lament*. The Royal Liverpool Philharmonic Orchestra makes a welcome return with a Classic FM Hall of Fame programme and the English Chamber Orchestra gives a masterclass in orchestral string writing.

We look forward to welcoming you to this fascinating season at Sheffield's spectacular City Hall.

Sheffield International Concert Season 2025/26

About the Concert Season

As a fundamental element of Sheffield City Hall's history since 1932, in this 93rd year, the Sheffield International Concert Season continues to celebrate the incredible classical music scene in the Steel City. We are proud to welcome a range of the world's most dynamic orchestras, conductors and soloists to the heart of Sheffield City Centre.

What You Can Expect on Concert Evenings

As well as the thrilling music being performed, Sheffield City Hall concert evenings offer the full package for the ultimate classical music experience.

Seating is split over two levels: stalls and circle. Each tier will give you a different experience of a concert; from up close and personal on the outer circle, to an immersive experience in the stalls, each seat will allow you to be surrounded by some of the finest classical music ever composed. As a fully accessible building, lifts are located at either end of the foyer giving access to all floor levels.

The City Bar at Sheffield City Hall offers a relaxed setting to enjoy a drink and catch up with friends before the concert or at the interval. With a wide range of hot and cold beverages and a selection of wines, draught beers and spirits on offer, the City Bar is the ideal meeting place.

Sponsor a Concert & Hospitality Packages

Sponsor a specific concert of your choice for a birthday, celebration or anniversary or to remember a loved one. Entertain clients or take up business sponsorship opportunities throughout the season. Our Vincent Harris and Barbirolli Suites are available for pre-concert and interval drinks with bespoke catering and hospitality packages. For package details contact us at businessevents@sheffieldcityhall.co.uk

Free Pre-Concert Talks

6-6.30pm before every concert 'In Conversation' with Trisha Cooper and musical guests*.

To get in the know about the music and who will be performing it, BBC Broadcaster, Trisha Cooper, invites the conductor, soloist and others to talk about their lives and music.

This informal talk offers a unique look behind the scenes at the professional and private passions of the international artists performing throughout the season. The pre-concert talks always end in a Q&A session with our guests. Informative and entertaining, it's the best way to start a concert!

Pre-concert talks are FREE to concert ticket holders, and take place in the Oval Hall.

* Please note on 7th June, the pre-concert talk will take place between 3-3.30pm as the concert begins at 4pm. There will not be a pre-concert talk before the Christmas concert.



We are proud to be a partner of Classical Sheffield, a collaboration that brings together many of the brilliant venues, performers, organisers and groups that contribute to Sheffield's thriving classical music scene.

For comprehensive weekly listings, features, resources and much more, visit classicalsheffield.org.uk

Meet-a-Musician with the Hallé

The Hallé's 'Meet-a-Musician' programme is designed for primary school pupils in Key Stage 2 and is available to schools in Sheffield. Previous projects have taken place as far as Nottingham, Stoke and Manchester, focusing on popular pieces of orchestral music.

The project is designed for a full class of pupils and involves a visit from a Hallé player, who will demonstrate their instrument, tell the pupils about life as a professional musician, as well as help the children compose a short creative piece based on a work from the set orchestral repertoire. The children are also offered the opportunity to attend a concert with their parent/guardian. This project allows children to have an unforgettable first experience of orchestral music at the City Hall.



Sheffield Music Academy exists to inspire excellence and we have been providing specialist training for young people aged 4-19 years old with outstanding musical ability, dedication and potential across the Sheffield City region and beyond for the last 15 years. Read more about what the Academy offers and check out upcoming concerts on the website: www.sheffieldmusicacademy.org



Trisha Cooper



Kahchun Wong

Saturday 27th September, 7pm

The Hallé

Kahchun Wong conductor

Truls Mørk cello

SHOSTAKOVICH Festive Overture	7'
ELGAR Cello Concerto	30'
<i>Interval</i>	
RACHMANINOV Symphony No.2	60'

Acclaimed cellist Truls Mørk joins the Hallé's Principal Conductor, Kahchun Wong, in this emotive opening to the 2025/26 Sheffield International Concert Season. Truls Mørk will take to the stage to play Elgar's deeply emotional Cello Concerto, a cornerstone of the instrument's repertoire and, famously, the composer's last completed work. Written in the aftermath of World War One, it is a poignant piece – never more so than in the heart-rending *Adagio* third movement – yet, despite this, there are still moments of that recognisable Elgarian nobility as well as hope. It remains amongst the composer's most celebrated and well-loved works.

In striking contrast, the concerto is framed by Shostakovich's *Festive Overture* and Rachmaninov's exuberant Symphony No.2. With its grandiose brass fanfare opening, full of cymbal crashes, the *Festive Overture* makes for a truly celebratory start to the season.

PRE-CONCERT TALK 6pm

Tickets: £33.50, £31.50, £25.50 **Student and Under 18's £9**

The prices shown include booking fees and facility fees. Purchases may be subject to handling and fulfilment fees.



Freddy Kempf

Saturday 18th October, 7pm

Brno Philharmonic Orchestra

Dennis Russell Davies conductor

Freddy Kempf piano

JANÁČEK Lachian Dances	19'
GERSHWIN "I Got Rhythm" Variations	12'
BRUBECK Brandenburg Gate	20'
<i>Interval</i>	
DVOŘÁK Symphony No.7	35'

"A pianist in a million" (*The Arts Desk*) and a true favourite with Sheffield audiences, Freddy Kempf returns to showcase his incredible talent with two pieces that seamlessly blend two different musical worlds. Gershwin's "I Got Rhythm" Variations, composed as an encore and dedicated to his brother Ira, is a dazzling fusion of jazz and classical brilliance whilst Brubeck's *Brandenburg Gate*, a concerto for jazz quartet and symphony orchestra, is a stunning jazz-infused masterpiece.

The Brno Philharmonic, the first international orchestra of the season, appear under the direction of their Artistic Director and Principal Conductor, Dennis Russell Davies, who opens the concert with Janáček's *Lachian Dances*, brimming with Czech folk tunes, and closes it with Dvořák's passionate Seventh Symphony.

PRE-CONCERT TALK 6pm

Tickets: £32.50, £30.50, £22.95 **Student and Under 18's £9**

The prices shown include booking fees and facility fees. Purchases may be subject to handling and fulfilment fees.



Richard Balcombe

Wednesday 5th November, 7pm

Royal Liverpool Philharmonic Orchestra

Richard Balcombe conductor

Miquel Ramos Salvadó clarinet

Tim Lihoreau presenter

CLASSIC FM HALL OF FAME

BIZET Carmen: Prelude to Act 1 - Habanera - Les Toreadors 7'

SAINT-SAËNS Danse macabre 8'

RAVEL Pavane pour une infante défunte 6'

HANDEL Music for the Royal Fireworks: La Réjouissance 2'

MOZART Clarinet Concerto 25'

Interval

SMETANA Má vlast: Vltava 12'

PRICE Symphony No.1: Juba Dance 4'

GRIEG Peer Gynt: Morning - In the Hall of the Mountain King 8'

TCHAIKOVSKY Swan Lake: Swan Theme 3'

VAUGHAN WILLIAMS English Folk Song Suite: March – Folk Songs from Somerset 3'

ELGAR Enigma Variations: Nimrod 4'

STRAVINSKY The Firebird: finale 3'

With a chart-topping concert, the Royal Liverpool Philharmonic Orchestra, under the direction of conductor and arranger, Richard Balcombe, makes a welcome return to the season. Each year, Classic FM holds the largest poll of the world's favourite classical music, as voted for by the public, with composers vying for the coveted top spot. Mozart, Elgar, Vaughan Williams and Tchaikovsky, as featured in this hugely popular programme, have all been in the running with female composers, such as Florence Price, rising up the charts in recent years too. As part of this wonderful evening of music, the orchestra's Principal Clarinet, Miquel Ramos Salvadó, takes the spotlight for Mozart's great Clarinet Concerto, widely considered to be among the finest concertos written for any instrument. Let Classic FM's weekend breakfast host, Tim Lihoreau, guide you through this concert of classical hits.

An official partner of
CLASSIC fm

PRE-CONCERT TALK 6pm

Tickets: £33.50, £31.50, £25.50

Student and Under 18's £9

The prices shown include booking fees and facility fees. Purchases may be subject to handling and fulfilment fees.

Saturday 29th November, 7pm

The Hallé

Kahchun Wong conductor

Akiko Suwanai violin

VERDI Overture: *The Force of Destiny* 8'

TCHAIKOVSKY Violin Concerto 33'

Interval

MEDELSSOHN Symphony No.4 "Italian" 30'

The Hallé returns with its dynamic Principal Conductor, Kahchun Wong, for his second appearance in the 2025/26 Sheffield season. Here, he is joined by the violin virtuoso, Akiko Suwanai, for a performance of Tchaikovsky's characterful Violin Concerto.

After winning the International Tchaikovsky Competition at the age of just 18, Akiko Suwanai has gone on to become a violinist of global acclaim and her performance of Tchaikovsky's popular concerto is sure to be a highlight. Spirited and technically demanding, the work is a real showcase for the instrument.

Mendelssohn wrote his Fourth Symphony after a trip to Italy in 1830. The work is a series of affectionate musical impressions of the country, each movement evoking Mediterranean sunshine, rolling countryside and monumental architecture. The concert begins with Verdi's powerful overture from his opera, *The Force of Destiny*.

PRE-CONCERT TALK 6pm

Tickets: £32.50, £30.50, £22.95

Student and Under 18's £9

The prices shown include booking fees and facility fees.
Purchases may be subject to handling and fulfilment fees.



Akiko Suwanai

Saturday 13th December, 2.30pm

CHRISTMAS CONCERT

Black Dyke Band

Sheffield Philharmonic Chorus

Josie d'Arby presenter

Darius Battiwalla conductor

Nicholas Childs conductor

Take some time out from the hustle and bustle of all the Christmas preparations – from shopping and wrapping, to decorating and card writing – with this sparkling seasonal celebration. Join the Black Dyke Band and the Sheffield Philharmonic Chorus as they come together once again for an afternoon filled with carols for choir, audience singalongs and musical gems for the band. With her innate ability and genuine gift for communicating with audiences of all ages, award-winning broadcaster Josie d'Arby will guide us through all the festive favourites in this Christmas tradition like no other.

The programme includes time-honoured pieces such as *O Holy Night*, *Carol of the Bells* and *The Lamb* as well as the popular songs, *White Christmas* and *Have Yourself a Merry Little Christmas*. No Yorkshire Christmas celebration would be complete without a nod to the county's extraordinary talent so taking pride of place is a carol by Barnsley composer, Arthur Godfrey, entitled *Christmas Eve* or "The Barnsley Carol".

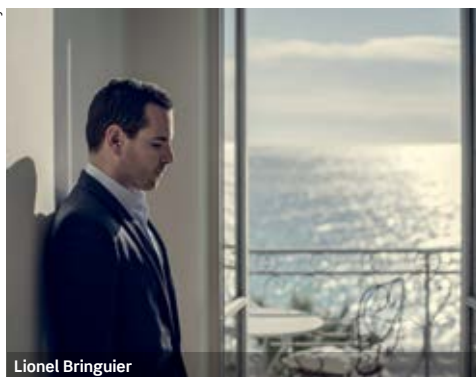


Photo: © Josie d'Arby



Tickets: £34.95, £32.50, £26.50 Student and Under 18's £9

The prices shown include booking fees and facility fees. Purchases may be subject to handling and fulfilment fees.



Lionel Bringuier

Friday 23rd January, 7pm

The Hallé

Lionel Bringuier conductor

Julius Asal piano

ESA-PEKKA SALONEN <i>Helix</i>	9'
GRIEG Piano Concerto	30'
<i>Interval</i>	
SIBELIUS Symphony No.2	43'

2025's astounding winner of the prestigious Terence Judd-Hallé Award, Julius Asal, joins forces with returning Hallé conductor Lionel Bringuier for a performance of Grieg's youthful Piano Concerto. From its thunderous opening timpani roll, through a heart-stoppingly beautiful *Adagio* to a rousing final movement, this stunning work has it all.

This Nordic-themed programme opens with Esa-Pekka Salonen's enigmatic *Helix*, described by the composer as a spiralling "nine-minute accelerando". While the pulse of the piece increases gradually throughout, the note values get proportionately longer, creating a fascinating experience for the audience, where the work seems to simultaneously speed up and slow down.

Sibelius composed his Second Symphony shortly after the successful premiere of *Finlandia*. The symphony was first performed in 1902 to great public admiration, its rousing finale linked by many to Finland's struggle for independence. Whether intentionally patriotic or not, the symphony's swelling melodic richness is truly moving.

PRE-CONCERT TALKS 6pm

Tickets £32.50, £30.50, £22.95 **Student and Under 18's £9**

The prices shown include booking fees and facility fees. Purchases may be subject to handling and fulfilment fees.



Tom Fetherstonhaugh

Friday 6th February, 7pm

Manchester Camerata Sheffield Philharmonic Chorus

Tom Fetherstonhaugh conductor

Hannah Roberts cello

J. S. BACH Cello Suite No.5: Prelude	6'
ARVO PÄRT Adam's Lament	24'
<i>Interval</i>	
ARVO PÄRT Cantus in Memoriam Benjamin Britten	7'
MOZART Symphony No.40	35'

Manchester Camerata and conductor Tom Fetherstonhaugh, described by BBC Radio 3 as "a spark to watch", guide us on an immersive journey through various sonic landscapes. Hannah Roberts, acclaimed Principal Cellist, will open the programme with the breathtaking *Prelude* from Bach's spell-binding *Cello Suite*. From one solitary performer, the sound world shifts as the combined forces of orchestra and chorus come together for a rare opportunity to hear Arvo Pärt's *Adam's Lament*, a work of deep contemplation. Profoundly affected by the death of Benjamin Britten in 1976, the respect and admiration Pärt felt towards the composer can be heard in the ethereal beauty of his elegiac orchestral piece, *Cantus in Memoriam Benjamin Britten*. Mozart's timeless Symphony No.40, with its passion and urgency, will ignite the orchestra for an electrifying and energetic conclusion.



Jennifer Pike

Thursday 19th February, 7pm

Czech Janáček Philharmonic

Daniel Raiskin conductor

Jennifer Pike violin

JANÁČEK The Cunning Little Vixen: Prelude & Pantomime	7'
SIBELIUS Violin Concerto	35'
<i>Interval</i>	
SHOSTAKOVICH Symphony No.10	57'

The Czech Janáček Philharmonic, led by their esteemed Music Director Daniel Raiskin, opens this captivating programme with music rooted in Czech history and influenced by the country's folk music. *Pantomime*, from Janáček's opera *The Cunning Little Vixen*, has one of the most sublime melodies ever written. Violinist Jennifer Pike, renowned for her "dazzling interpretative flair" (*Classic FM*) and her ability to "hold an audience spellbound" (*The Strad*), brings her unique artistry and compelling insight to Sibelius' Violin Concerto, a work of soaring melodies and virtuosic brilliance. After the interval, experience the power of Shostakovich's monumental masterpiece. His Tenth Symphony is a gripping exploration of human resilience and triumph, filled with dramatic intensity and sweeping orchestral grandeur.

PRE-CONCERT TALK 6pm

Tickets: £33.50, £31.50, £25.50 **Student and Under 18's £9**

The prices shown include booking fees and facility fees. Purchases may be subject to handling and fulfilment fees.

Sunday 15th March, 7pm

The Hallé

Alpesh Chauhan conductor

Tine Thing Helseth trumpet

BRITTEN Gloriana: Courtly Dances 9'

NICO MUHLY Doom Painting 25'

Interval

WALTON Symphony No.1 43'

Alpesh Chauhan, an inspiring conductor with a glittering career, opens the Hallé's fourth appearance with Britten's lively "Courtly Dances" from his opera *Gloriana*. Norwegian trumpet star, Tine Thing Helseth, then takes to the platform to perform a new and exciting work, written especially for her. Nico Muhly's *Doom Painting* leads us on a dramatic, musical journey, illustrating the biblical role of the trumpet: from ceremonial object for rituals and celebrations alike, to the harbinger of Doomsday and the jubilant instrument of the psalms. "Her ability to transform the brassy trumpet sound into something soft, supple, lyrical and delectable needs to be heard to be believed" (*The Evening Standard*).

Walton's First Symphony, widely considered amongst the greatest 20th century symphonies, is sometimes triumphant, sometimes menacingly hostile – the second movement is subtitled "Presto con malizia" ("quickly with malice"). Expect emotional intensity from start to finish!

PRE-CONCERT TALK 6pm

Tickets: £32.50, £30.50, £22.95

Student and Under 18's £9

The prices shown include booking fees and facility fees. Purchases may be subject to handling and fulfilment fees.



Tine Thing Helseth



Stephanie Gonley

Thursday 26th March, 7pm

English Chamber Orchestra

Stephanie Gonley director

ELGAR Serenade for Strings	12'
BRITTEN Variations on a Theme of Frank Bridge	26'
<i>Interval</i>	
WIRÉN Serenade for Strings	15'
TCHAIKOVSKY Serenade for Strings	28'

Stephanie Gonley, Leader of the English Chamber Orchestra since 1991, brings her experience and dedication to this exquisite all-string programme. 50 years after his death, Britten's creativity is brilliantly showcased in his vibrant *Variations on a Theme of Frank Bridge*, a vivid tribute to his revered teacher and mentor. The rest of the programme celebrates three timeless serenades, opening with Elgar's heartfelt work that radiates English pastoral charm. After the interval, relish a sparkling gem from the Swedish composer, Dag Wirén, whose playful *Serenade* is full of light-hearted moments. The concert concludes with Tchaikovsky's sublime work, an homage to Mozart that combines lyrical grace with sweeping emotional depth. This is a stunning celebration of masterful string writing.

PRE-CONCERT TALK 6pm

Tickets: £32.50, £30.50, £22.95 **Student and Under 18's £9**

The prices shown include booking fees and facility fees. Purchases may be subject to handling and fulfilment fees.



Thibaut Garcia

Friday 17th April, 7pm

Spanish Galicia Symphony Orchestra

Roberto González-Monjas conductor

Thibaut Garcia guitar

FALLA The Three-Cornered Hat: Three Dances	12'
RODRIGO Concierto de Aranjuez	21'
<i>Interval</i>	
RAVEL Mother Goose: Suite	16'
TURINA Sinfonia sevillana	22'
RAVEL Boléro	13'



The Spanish Galicia Symphony Orchestra, the first Spanish orchestra to grace the series for decades, brings with them a Mediterranean-inspired programme. Rapidly making a mark on the international scene, their Music Director, Roberto González-Monjas, will be joined by “the new face of classical guitar” (*Classical Guitar Magazine*) Thibaut Garcia, who will take the spotlight for Rodrigo’s exquisite *Concierto de Aranjuez*. The concert opens with the fiery elegance of Falla’s *Three Dances* from his ballet *The Three-Cornered Hat*. After the interval, journey through the enchanting world of Ravel’s whimsical *Mother Goose Suite* and soak up the lush, evocative portrait of Seville’s soul in Turina’s *Sinfonia sevillana*. The concert culminates in a mesmerizing crescendo with Ravel’s hypnotic *Boléro*.

PRE-CONCERT TALK 6pm

Tickets: £33.50, £31.50, £25.50 Student and Under 18’s £9

The prices shown include booking fees and facility fees. Purchases may be subject to handling and fulfilment fees.

Saturday 9th May, 7pm

The Hallé

Euan Shields conductor

Imogen Cooper piano

STRAVINSKY Song of the Nightingale 21'

MOZART Piano Concerto No.27, K595 32'

Interval

TCHAIKOVSKY Symphony No.2 "Little Russian" 32'

Hallé award-winning conductor Euan Shields is joined by Dame Imogen Cooper to perform Mozart's final piano concerto. Written in striking contrast to his other concertos, Mozart's 27th Piano Concerto, full of richness and lyricism, is scored for a relatively small orchestra. Nevertheless, it is still packed with the charm and beauty so characteristic of the composer's other works.

Beginning proceedings is Stravinsky's *Song of the Nightingale* - an effective musical illustration of both real and mechanical birdsong. Tchaikovsky's Second Symphony, dubbed "Little Russian" thanks to its effective use of Ukrainian folksongs, provides a joyful end to the evening.

PRE-CONCERT TALK 6pm

Tickets: £33.50, £31.50, £25.50 Student and Under 18's £9

The prices shown include booking fees and facility fees. Purchases may be subject to handling and fulfilment fees.

Imogen Cooper



Matthew Hamilton

Sunday 7th June, 4pm

The Hallé Sheffield Philharmonic Chorus

Matthew Hamilton conductor

A star-studded cast of soloists

MENDELSSOHN *Elijah*

133'

Hallé Choral Director, Matthew Hamilton, takes the helm for this spectacular season finale. A true showstopper, Mendelssohn's *Elijah* captures the full spectrum of humanity's struggles and triumphs, bringing the powerful story of the prophet Elijah to life through music. For this masterpiece, Sheffield's resident orchestra and chorus will be joined by a star-studded cast of soloists who will weave this rich tapestry of sound, blending rousing choruses, lyrical arias, complex choral fugues and vivid orchestrations, ending with a triumphant "Amen".

Commissioned by the Birmingham Triennial Music Festival in 1846, Mendelssohn returned to the city to conduct the premiere of *Elijah* to find crowds had flooded the streets and the large audience frequently interrupted the performance to applaud! "Never was there a more complete triumph" wrote a reviewer in *The Times*.

PRE-CONCERT TALK 3pm

Tickets: £32.50, £30.50, £22.95 **Student and Under 18's £9**

The prices shown include booking fees and facility fees. Purchases may be subject to handling and fulfilment fees.

Season Tickets and Flexible Tickets

Save money and secure your favourite seats!

13th Symphony – All 13 Concerts

Book all 13 concerts and **save 40%** on the ticket prices. The best way to see all the amazing music and select your preferred seat in the hall. With a season ticket you get the best value for money and access to season ticket only events. A facility fee applies to transactions.

6th Symphony – Choose 6 Concerts

Book half of the season and **save 15%** on the ticket prices. Have the flexibility to piece together your own season and choose your concerts but still make a great saving. You can guarantee your seat throughout these concerts and get great savings while having the pick of the concerts and tailoring the season to suit you. (The six concert season ticket excludes the Christmas Concert).

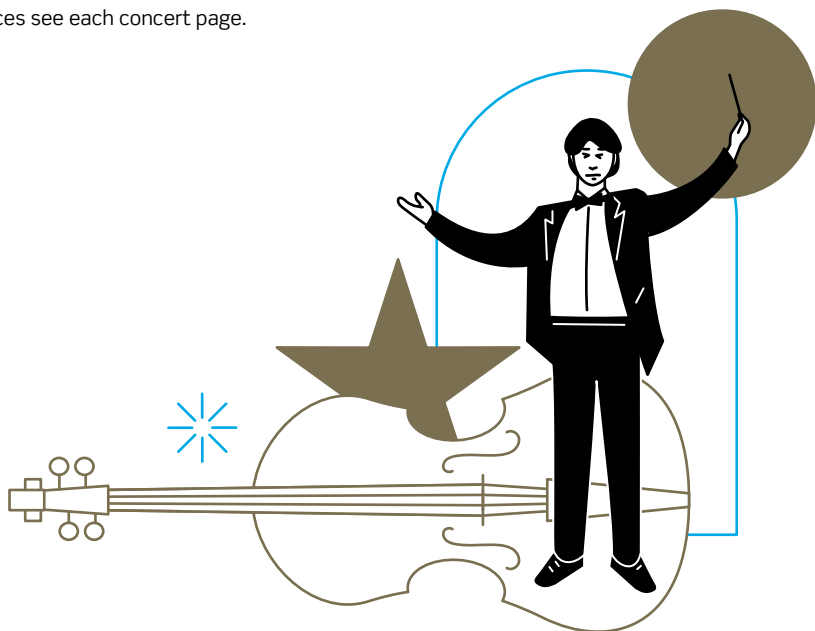
The prices depend on the position of your seat in the hall whether you choose the stalls or circle level. Season Tickets and Flexible Tickets are not available in conjunction with any other discount or concession tickets.

For single ticket prices see each concert page.

How to book

Book your season ticket in person at the City Hall Box Office or by calling the Season Ticket booking line on 0333 3211091 10am – 4pm.
Email boxoffice@sheffieldcityhall.co.uk

* Please note season ticket prices are only available when purchased together and cannot be applied retrospectively. Any additional tickets added onto a season ticket or flexible ticket will be charged at single ticket prices.



Tickets

Tickets for the Sheffield International Concert Season are available online at:

[www.sheffieldcityhall.co.uk/](http://www.sheffieldcityhall.co.uk/sheffieldinternational-concert-season)

sheffieldinternational-concert-season and in person at the Sheffield City Hall Box Office.

Under 18 and student tickets are priced at just £9, giving young people a great opportunity to watch some of the world's finest musicians for an incredible price!

£9

These tickets cannot be posted and must be collected from the Box Office with valid ID for proof of age or student status. These concession tickets are not available with Season Ticket and Flexible Ticket discounts.

Safety & Security

The health and wellbeing of all our customers, staff and the events we host is our absolute priority at Sheffield City Hall. We therefore ask everyone attending a concert to respect fellow visitors, keep their distance where possible and to be considerate - we are all at different stages of comfort and some people may still be apprehensive when visiting our venues. We continue to work with event organisers, promoters and the National Arenas Association on entry requirements to our venues and will update our advice as required. Our procedures will continue to evolve, be reviewed and updated should any guidance or law change.

Booking and Fulfilment Fees

The prices shown in this brochure include booking and facility fees. At the time of going to print, bookings are subject to a transaction fee and may be dependant upon fulfilment option selected whether posted, collected or print at home, a fulfilment fee. The facility fee is a small charge that contributes to the upkeep, safety and security of the building to ensure that you enjoy your visit. Ask a member of the Box Office team or go to **www.sheffieldcityhall.co.uk/box-office** for more information.

Group bookings

With ten tickets for the price of nine, if you would like to bring a large group or school trip to experience an unforgettable concert, visit the Box Office in person.

All major credit/debit cards accepted.

Tickets

www.sheffieldcityhall.co.uk

Box Office

boxoffice@sheffieldcityhall.co.uk

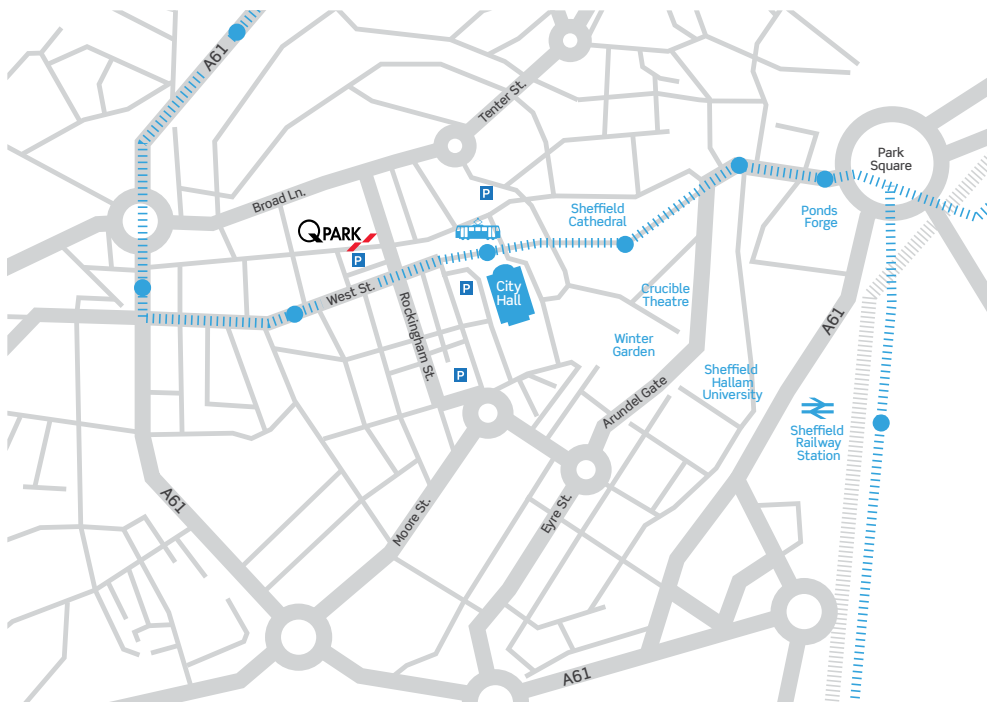
In Person Opening Times:

Monday - Friday 10.00am – 4.00pm.

For Bank Holiday opening times please check the venue website.



All artists, programmes and prices are correct at the time of going to press, but may be subject to change in the event of unforeseen circumstances.



Getting Here

Address for your Sat Nav device:
Sheffield City Hall, Barkers Pool,
Sheffield S1 2JA

Parking

Parking in the City Centre surrounding the venue is very limited. Sheffield City Hall recommends Q Park on Rockingham Street/Portobello Street, S1 4NL, located a short five minute walk away.



35% off for Sheffield City Hall customers at Q Park Rockingham Street, Sheffield. Pre-book parking through the Q Park website enter the promocode: CITYHALL35

Bus

For details of the most suitable service from your area call the Traveline on **01709 51 51 51** or visit **www.travelouthyorkshire.com**

Stagecoach Supertram

Sheffield City Hall has a designated Supertram stop, named 'City Hall'.

Access Information

Passenger lifts are available providing access to all floors, including the downstairs City Bar, with toilet facilities available on all levels. Blind and Partially Sighted Assistance dogs are welcome in all areas of the building.

Wheelchair Users

Please inform the Box Office when booking if a member of your party is a wheelchair user so that an appropriate position can be allocated.

Hearing Impaired

An infrared sound amplification system is available in the Oval Hall on the Stalls, Circle and Balcony levels. Both loop and conventional headsets are available. Stethoset Receivers and Bodypack Receivers are also available. Devices can be requested via the Box Office and stewards are on hand to assist.

Alternative Formats

The Sheffield International Concert Season Brochure and Concert Programmes are available in large format print. Please contact the Box Office to order your copy.

Sheffield Philharmonic Chorus

2025-26 Season

Royal Philharmonic Society Inspiration Award 2024 nominee.
Patrons: Samuel West and Petroc Trelawny
Music Director: Darius Battiwalla

As South Yorkshire's foremost large mixed-voice choir, the Chorus is proud to be Resident Chorus at the City Hall, performing alongside Orchestra in Residence the Hallé and acclaimed soloists as part of the Sheffield International Concert Season. We're delighted to share our programme for 2025-26:

Sat 1 November 2025, 7.30pm, Organ Celebrations, St Marie's Cathedral, Norfolk Row

We present a special concert in the beautiful acoustic of St Marie's to celebrate the 150th anniversary of the cathedral's wonderful Lewis organ, now fully restored. A rich and varied programme featuring choral and organ works performed by the Chorus and celebrated organist Darius Battiwalla.

Sat 13 December 2025, 2.30pm, Christmas Concert, Sheffield City Hall

Join the Chorus and the world-famous Black Dyke Band for Sheffield International Concert Season's annual Christmas Special, a 'must' for music lovers at Christmas. With award-winning broadcaster Josie d'Arby (BBC Proms, Choir of the Year) presenting and favourites from *Carol of the Bells* and *O Holy Night* (from the film *Home Alone*), to *White Christmas*, this is a concert not to be missed!

Fri 6 February 2026, 7pm, with Manchester Camerata, Sheffield City Hall

The Chorus is excited to join the superb Manchester Camerata for Arvo Pärt's powerful *Adam's Lament*, portraying Adam's anguish on being banished from the Garden of Eden. The programme also features Pärt's haunting *Cantus in Memoriam Benjamin Britten*, Bach's Cello Suite No. 5, featuring Hannah Roberts on cello, and Mozart's Symphony No. 40, conducted by Tom Fetherstonhaugh.

May 2026, *Come and Sing!*

Keep an eye on the Chorus website for details of our next *Come and Sing!* event in May 2026.

Sun 7 June 2026, 4pm, Mendelssohn *Elijah*, Sheffield City Hall

We are delighted to join the Hallé and a stellar line-up of soloists for a performance of Mendelssohn's majestic and ever-popular oratorio *Elijah*. Conducted by Choral Director at the Hallé and the Royal Liverpool Philharmonic Choir Matthew Hamilton, this concert brings the season to a thrilling close.

Love singing? Join Us!

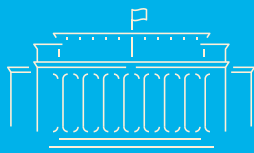
The Chorus is a friendly choir that always welcomes new members in all voice parts, but especially tenors and basses. Prospective new members with some previous experience are invited to sing with us at our Tuesday evening rehearsals for a few weeks to see what it's like before auditioning. Call / text 07771 578 233, email sing@sheffieldphil.org or visit www.sheffieldphil.org for details.

Book tickets now and find out more at www.sheffieldphil.org

Follow us on

X @sheffcityhall

Instagram @sheffieldcityhall



Sheffield City Hall

www.sheffieldcityhall.co.uk