

City-Parish Traffic Mitigation Related to I-10 Construction

March 2, 2023



MAYOR-PRESIDENT
**SHARON
WESTON
BROOME**

- 
- This is OUR City, but this is NOT our project.
 - We have been in constant communication with DOTD.
 - What we know today: Construction will start in 2023 but traffic will not be disrupted (lane closures) until 2025. (As reported by DOTD.)
 - Lane closures will only last 12-14 months per LADOTD.
 - We are doing what WE can control in anticipation of this disruption as demonstrated on the following slides.

To help keep EBR moving:

- Upgrading the entire signal system (part of MOVEBR – regardless of I-10 construction)
- Real-time monitoring of all signals in parish – able to respond to congestion in real-time from a central advanced traffic management center
- Shifting construction schedules to ensure no critical lane closures during 2024
- Upgrading detection on critical routes
- Prioritized key alternative corridors for fiber installation and signal upgrades
- Coordinating with DOTD on additional corridor timing and detection upgrades
- Coordinating with DOTD, CRPC and Division of Administration on the Commuter Krewe program to promote ride-sharing, flex hours, potential 4-day work week, work-from-home

15 Key Alternative Corridors during I-10 Widening Construction



Modernizing Our Entire Signal System

- A connected City with centrally managed mobility
- Real-time control of signals to better manage:
 - Incidents (wrecks, signal service, wide-loads, etc.)
 - Special events (football, concerts, etc.)
 - Evacuations
 - Unusual congestion
 - Interstate construction projects
- Faster emergency response times
- Consistent Commute Times



Improvements Underway

100% Complete Before 2024:

- **Fiber Optic Cable for Communication**
- Detection Devices and Cameras
- **Traffic Monitoring Cameras**
- Hardware and Software Upgrades (ATMC)
- **Signal Upgrades**
- Signal retiming for newly connected corridors



Fiber Optic Cable

- 176 new miles of fiber optic cable
- Improves corridor operations
- Provides communications for all signals to a central system

Signalization Progress

- ✓ 400,000+ ft. of additional fiber being installed throughout EBR Parish:
Over 1000' per day
- ✓ Back-up power for signals: *117 of 117 installed*
- ✓ Traffic signal controllers: *150 of 150 replaced*
- ✓ Emergency Vehicle Preemption: *440 of 440 installed*
- ✓ Surveillance Cameras: *88 of 88 installed*
- ✓ Vehicle detection: *178 of 178 installed*
- ✓ Under construction and coming soon:
 - New school flashers – *227 of 310 installed*
 - Count stations

Signal Upgrades

- Replacing outdated equipment
- Pedestrian crossings where needed
- Emergency vehicle preemption
- Back-up power supply at critical intersections
- Flashing yellow left turn arrows where appropriate





Detection Devices and Cameras

- Enable signals to detect vehicles and adjust timings based on actual traffic volumes
- Traffic data collection

Traffic Monitoring from Advanced Traffic Management Center

- **Strategically placed cameras monitor traffic and incidents**
-
- **Real-time response**



Hardware and Software Upgrades at the Advanced Traffic Management Center (ATMC)



- Allows monitoring of traffic signals at a centralized location
- Allows access to data in a usable format

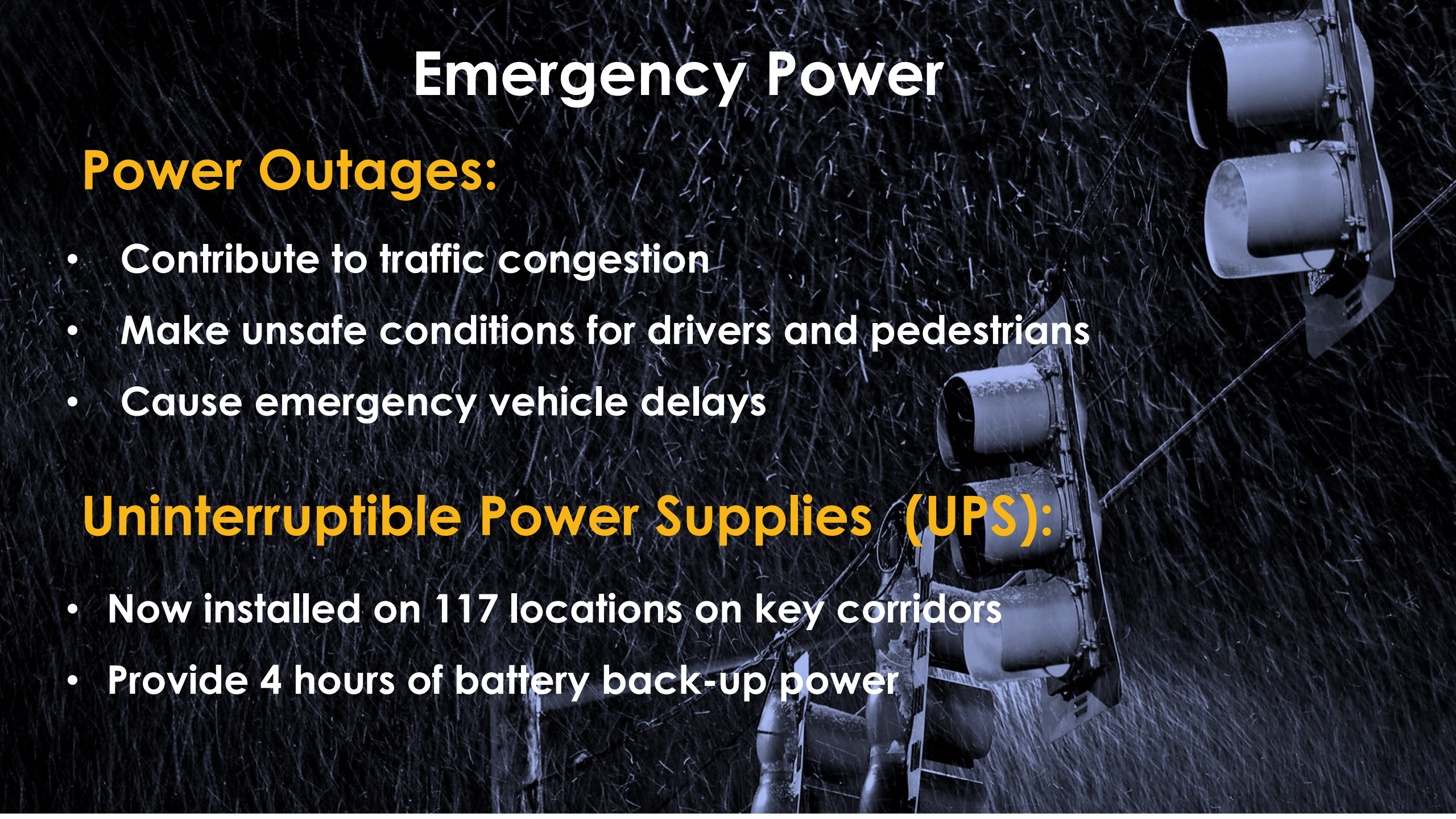
Emergency Power

Power Outages:

- Contribute to traffic congestion
- Make unsafe conditions for drivers and pedestrians
- Cause emergency vehicle delays

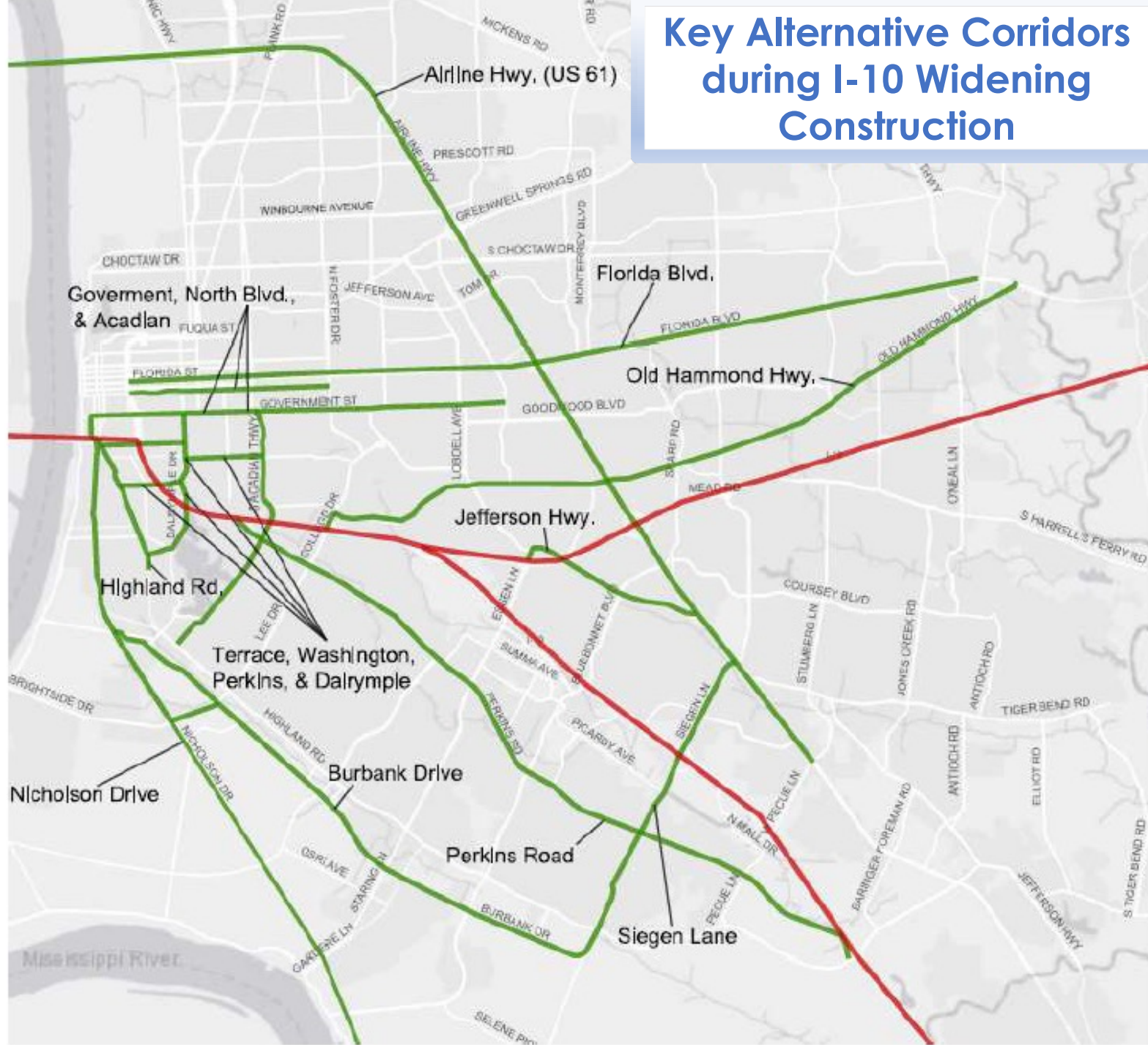
Uninterruptible Power Supplies (UPS):

- Now installed on 117 locations on key corridors
- Provide 4 hours of battery back-up power



Fiber Connection

	Roadway	Signals Connected and Ready To Be Integrated Into System
1.	Dalrymple Dr	Complete
2.	Airline Hwy	January 2023
3.	Government St	January 2023
4.	Acadian Thwy	February 2023
5.	Burbank Dr	February 2023
6.	Florida Blvd	February 2023
7.	Highland Rd	February 2023
8.	North Blvd	February 2023
9.	Old Hammond Hwy	February 2023
10.	Jefferson Hwy	March 2023
11.	Nicholson Dr	March 2023
12.	Perkins Rd	March 2023
13.	Siegen Ln	March 2023
14.	Terrace Ave	April 2023
15.	Washington St	April 2023



Commuter Krewe of Louisiana

commuterkrewe.la

EBR participates in this program by DOTD and the Capital Region Planning Commission:

- **Ridesharing promoted to City-Parish employees on-site**
- **Commuter Krewe Free App helps find Ride Share Matches**
 - **4,000 commuters have signed up to date**
 - **Free Emergency Ride Home provided**
- **Teleworking/Flex-time consulting services available at no cost**
- **Monitoring state agency plans for 4-day work week/flex schedules**



At the Mayor's Request, the MOVEBR Communications team has begun monthly online meetings to share information and coordinate with:

- DOTD Communications Director
- COREX10 (I-10 Widening Project Design Team) Public Information Officer
- Mayor's Communications Team
- EBR Public Information Office
- CATS
- Capital Region Planning Commission (CRPC)

