

Maps of Western South Dakota  
and Northeastern Wyoming

**BLACK HILLS  
& BADLANDS SD**

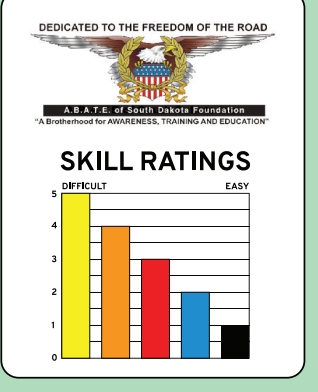
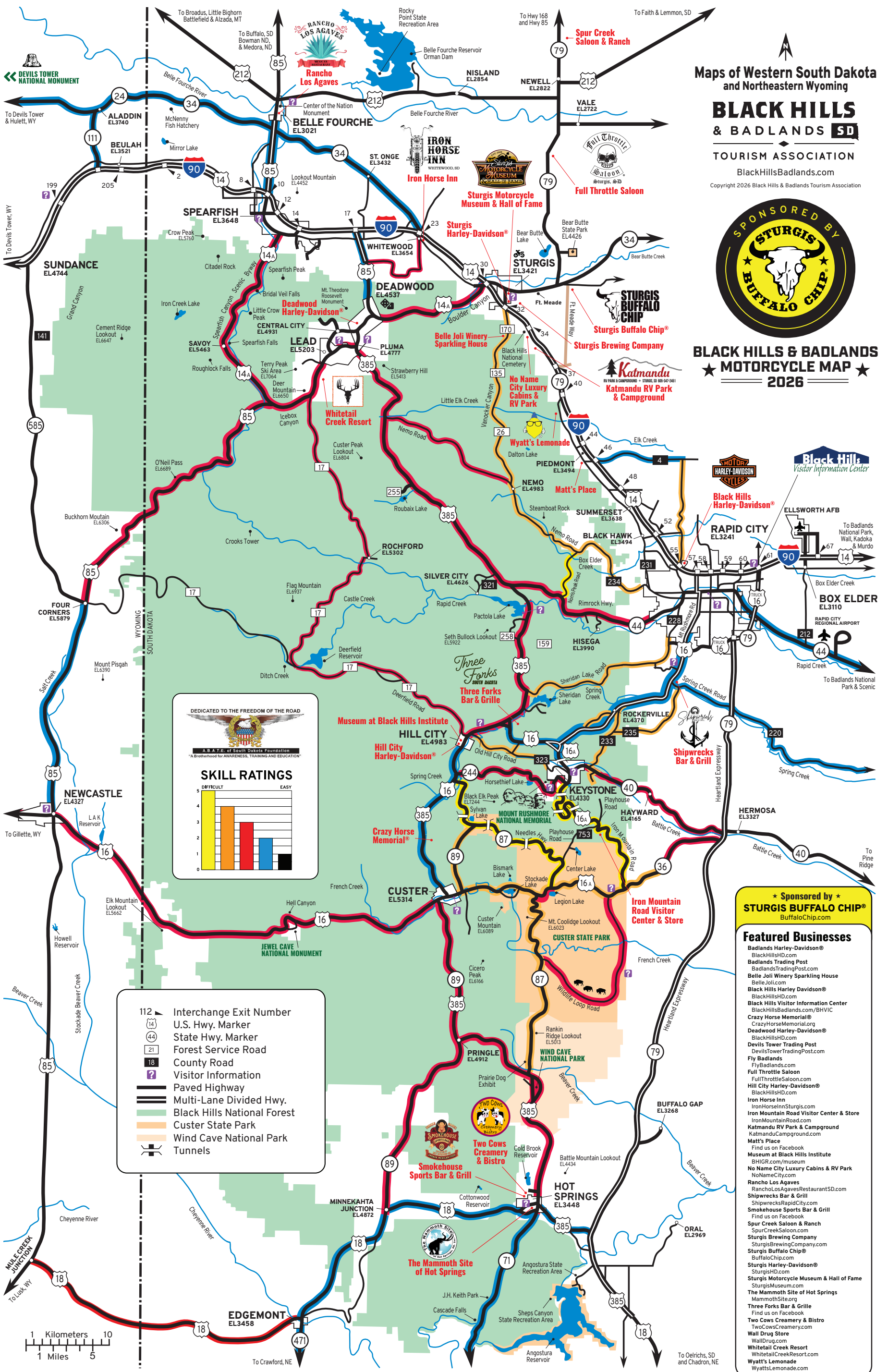
TOURISM ASSOCIATION

BlackHillsBadlands.com

Copyright 2026 Black Hills & Badlands Tourism Association



**BLACK HILLS & BADLANDS  
MOTORCYCLE MAP  
2026**



- 112 Interchange Exit Number
- 14 U.S. Hwy. Marker
- 44 State Hwy. Marker
- 21 Forest Service Road
- 18 County Road
- Visitor Information
- Paved Highway
- Multi-Lane Divided Hwy.
- Black Hills National Forest
- Custer State Park
- Wind Cave National Park
- Tunnels

\* Sponsored by \*  
**STURGIS BUFFALO CHIP®**  
BuffaloChip.com

- Featured Businesses**
- Badlands Harley-Davidson®
  - BlackHillsHD.com
  - Badlands Trading Post
  - BadlandsTradingPost.com
  - Belle Joli Winery Sparkling House
  - BelleJoli.com
  - Black Hills Harley Davidson®
  - BlackHillsHD.com
  - Black Hills Visitor Information Center
  - BlackHillsBadlands.com/BHVIC
  - Crazy Horse Memorial®
  - CrazyHorseMemorial.org
  - Deadwood Harley-Davidson®
  - BlackHillsHD.com
  - Devils Tower Trading Post
  - DevilsTowerTradingPost.com
  - Fly Badlands
  - FlyBadlands.com
  - Full Throttle Saloon
  - FullThrottleSaloon.com
  - Hill City Harley-Davidson®
  - BlackHillsHD.com
  - Iron Horse Inn
  - IronHorseInnSturgis.com
  - Iron Mountain Road Visitor Center & Store
  - IronMountainRoad.com
  - Katmandu RV Park & Campground
  - KatmanduCampground.com
  - Matt's Place
  - Find us on Facebook
  - Museum at Black Hills Institute
  - BHIGR.com/museum
  - No Name City Luxury Cabins & RV Park
  - NoNameCity.com
  - Rancho Los Agaves
  - RanchoLosAgavesRestaurantSD.com
  - Shipwrecks Bar & Grill
  - ShipwrecksRapidCity.com
  - Smokehouse Sports Bar & Grill
  - Find us on Facebook
  - Spur Creek Saloon & Ranch
  - SpurCreekSaloon.com
  - Sturgis Brewing Company
  - SturgisBrewingCompany.com
  - Sturgis Buffalo Chip®
  - BuffaloChip.com
  - Sturgis Harley-Davidson®
  - SturgisHD.com
  - Sturgis Motorcycle Museum & Hall of Fame
  - SturgisMuseum.com
  - The Mammoth Site of Hot Springs
  - MammothSite.org
  - Three Forks Bar & Grill
  - Find us on Facebook
  - Two Cows Creamery & Bistro
  - TwoCowsCreamery.com
  - Wall Drug Store
  - WallDrug.com
  - Whitetail Creek Resort
  - WhitetailCreekResort.com
  - Wyatt's Lemonade
  - WyattsLemonade.com

**SAFETY HELMET** - Required under age 18; helmet must be an approved US DOT helmet. **EYE PROTECTION** - Required unless equipped with windscreens of sufficient height and design that protects the motorcycle operator. When headlights are required to be on, protective eye devices that are tinted or shaded cannot reduce the light transmission of the device below 35%. **MUFFLER** - Must at all times be equipped with a muffler in good working order and in constant operation to prevent excessive or unusual noise. No person may make any alteration or modification of any kind. **LANE SPLITTING** - Illegal in South Dakota. **USE OF FULL LANE** - A motorcycle is entitled to the use of its full lane. No vehicle may be driven in such a manner as to deprive any motorcycle of the full use of a lane.

## BADLANDS REGION

**Map Details:**

- Major Roads:** I-90, I-76, I-160, SD-44, SD-27, SD-14, SD-73, SD-63, SD-183, SD-83, SD-44, SD-191, SD-192.
- Landmarks:** Badlands National Park, Pine Ridge Indian Reservation, Buffalo Gap National Grassland, Sage Creek Wilderness Area, Minuteman Missile Nat'l Historic Site, Devils Tower National Monument.
- Visitor Centers:** Nat'l Grasslands Visitor Center, Minuteman Missile Visitor Center, Ben Reifel Visitor Center, White River Visitor Center.
- Stores:** Badlands Harley-Davidson, Wall Drug Store, Badlands Trading Post.
- Geography:** Cheyenne River, White River, Buffalo Gap National Grassland, Sage Creek Wilderness Area.

**Legend:**

- 112 Interchange Exit Number
- 14 U.S. Hwy. Marker
- 44 State Hwy. Marker
- 21 Forest Service Road
- 18 County Road
- 6 BIA Hwy. Marker
- 6 Visitor Information
- Paved Highway
- Multi-Lane Divided Hwy.
- Black Hills National Forest
- Park Boundary



SCAN HERE TO FIND MORE BLACK HILLS & BADLANDS MAPS

## BLACK HILLS & BADLANDS SD TOURISM ASSOCIATION

Copyright 2026  
Black Hills & Badlands Tourism Association

**Map Details:**

- Major Roads:** I-90, I-160, SD-14, SD-24, SD-34, SD-85, SD-111, SD-116, SD-189, SD-191, SD-199, SD-205, SD-14a, SD-10.
- Landmarks:** Devils Tower National Monument, Bear Lodge Mountains, Keyhole State Park, Pine Haven, Sundance Mountain.
- Towns:** Aladdin, Spearfish, Sundance, Belle Fourche, Beulah, Moorcroft.
- Other:** Devils Tower Trading Post, Sandstone Mountain, Sugarloaf Mountain, Warren Peak, Cement Ridge Lookout, Iron Creek Lake, Savoy.



### Black Hills Visitor Information Center

WELCOME TO THE BLACK HILLS!  
We're here to help year-round.

- Trip Planning • Maps • Brochures • Books
- South Dakota-Made Products • Souvenirs
- Local Wines • OHV Permits • Picnic Area

1851 Discovery Circle, Rapid City, SD 57701  
I-90 Exit 61 • 605.355.3700 • BlackHillsBadlands.com/BHVIC

# STURGIS BUFFALO CHIP

PRESENTED BY **PROGRESSIVE**

## LAINIEY WILSON • YUNGBLUD • LYNYRD SKYNYRD MEGADETH • COLLECTIVE SOUL • DAVID LEE ROTH BUCKCHERRY • DROWNING POOL • MORE!

AUG. 7-16, 2026 | BUFFALOCHIP.COM | 605.347.9000 | 20622 FORT MEADE WAY, STURGIS, SD

**IRON HORSE INN**  
WHITEWOOD, SD

**THE I BAR**  
IRON HORSE INN

Specializing in Fresh Baked Pizza  
**605-717-2418**

Lots of Parking  
All Rooms Ground Floor with Outside Entrances  
**605-722-7574**  
600 Whitewood Service Road  
Whitewood, SD  
IronHorseInnSturgis.com

Your Stop at **Badlands National Park**

**Badlands Trading Post**  
Conoco Gas Station • Convenience Store • Unique Western Shop  
Buffalo Hot Dogs • Ice Cream • Adjacent to Prairie Dog Town  
605.433.5411  
I-90, Exit 131 • Badlands National Park

**Three Forks**  
SOUTH DAKOTA

Burgers, beers, gas, clean restrooms, casino—everything you need for the ride, all in one stop here in Hill City!

605.574.2998  
23820 US-385 N, Hill City  
@threeforksbargrille

### VISIT ALL FIVE LOCATIONS

**Sturgis Harley-Davidson NOW SELLS MOTORCYCLES!**

**wyatt's lemonade**

THE STOP EVERYONE TALKS ABOUT

Take exit 40 (Tilford) off I90. If traveling toward Sturgis get off at exit 40 and take a left. Go over the highway and take Sturgis Road 3/4 mile back toward Rapid City. Look for the giant lemonade flag!

For bikers, neighbors, and something bigger.

**Sturgis Motorcycle Museum & Hall of Fame**

EST. 2001

999 Main St. — Sturgis, SD 57785  
605.347.2001 — www.sturgismuseum.com  
Open Daily

## DEVILS TOWER TRADING POST

At America's First National Monument

- ICE CREAM PARLOR • SNACK BAR
- CLEAN RESTROOMS
- BUFFALO HIDES • ALIEN SOUVENIRS
- STURGIS "DEVILS TOWER RUN" T-SHIRTS - SOLD ONLY HERE!
- OFFICIAL STURGIS RALLY PRODUCTS
- LIVE WEB CAM

307-467-5295 • Devils Tower, WY  
www.devilstowertadingpost.com

**Shipwrecks**  
Rapid City

9356 NECK YOKE ROAD, RAPID CITY  
— Located Across from Reptile Gardens —  
605-341-3515 • SHIPWRECKSRAPIDCITY.COM

**BLACKBERRY SMOKE 7**

**SAMMY HAGAR and Friends 8**

**JAMEY JOHNSON 9**

**JOURNEY 11**

**ROB ZOMBIE 12**

**JACKYL 13**

GET YOUR CABINS AND CONCERT TICKETS AT WWW.FULLTHROTTLESALOON.COM