

2024 VISITOR GUIDE

EXPLORE
boone
NORTH CAROLINA



828-266-1345
ExploreBoone.com



Come for the fun.
Leave *Inspired.*

Folks come to Grandfather Mountain for all sorts of reasons — from a family getaway to the thrill of the Mile High Swinging Bridge. But after a day on the mountain, and in the new interactive Wilson Center For Nature Discovery, everyone leaves inspired.

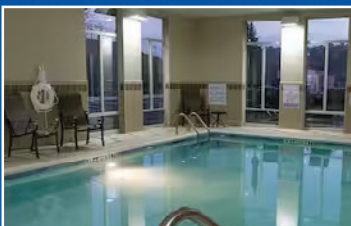
grandfather.com

**GRANDFATHER
MOUNTAIN®**

Wonders Never Cease

NEW Wilson Center for Nature Discovery

A Modern Hilltop Hotel With Blue Ridge Mountain Views



2023 Top 1% Hampton Brighter Together Award Winner

*Suites With A Sofa Bed, Mini-Refrigerator,
Microwave & Balcony, Free WiFi In Every Room*

AppalCart Free Bus Transportation Within The Area

Clean And Fresh Hampton Bed®

*24-Hour Suite Shop with Beverages,
Snacks & Travel Essentials*

Free Hot/Cold Breakfast Daily

Gym/Fitness Center, Heated Indoor Pool

Meeting Rooms, Pet-Friendly Rooms

Scenic Outdoor Seating Areas

1.5 Miles From ASU



1252 US HIGHWAY 421 SOUTH, BOONE, NC 28607

(828) 386-6464





WELCOME TO BOONE NORTH CAROLINA

PERCHED HIGH IN THE BLUE RIDGE MOUNTAINS, Boone delights visitors with small-town feel and college-town sophistication, laid-back attitude and unlimited activity. Fact of the matter is, you're not likely to meet kinder, less pretentious folks anywhere. Come see for yourself.

Inspiring Awe
Since 1849™




This welcoming mountain town offers something for just about everyone, any time of year. Whether you're after the rush of zip lining, skiing, or mountain biking, or the rush that comes from a great day of shopping, we've got you covered. Boone also has something for those of you who are overdue for a relaxing day at the spa or prefer wine trails to hiking trails.

Enjoy a romantic stay at a cozy bed and breakfast, a secluded mountain cabin, or a luxurious, modern hotel. Or bring the whole family and live like locals for a few days. Our wide variety of mountain cabins, cottages, and condos provide all the comforts of home while immersing you in distinctly different surroundings.

SPRING

Fall may get all the attention, but late spring in Boone is also colorful—and a lot less crowded.



As winter melts into spring, the area comes alive with lush greens and vibrant blossoms. Between the melting snow and the occasional spring showers, our rivers and streams are in peak condition for waterfall viewing, canoeing, rafting, and kayaking.

April ushers in the start of trout season in one of the best fly-fishing destinations in the Southeast. Our professional outfitters can guide you to secret spots for a memorable day of casting from the shore, wading in the rapids, or floating with the flow. Don't underestimate the therapeutic power of hip waders.

Merlefest, in nearby Wilkesboro, kicks off the festival season in April, followed by the High Country Jazz Festival and the Boonerang Music & Arts Festival in June. Showy spring wildflowers like the bright orange Flame Azalea and bright pink Catawba Rhododendron begin blooming in mid to late May.

“

Known as the **Heart of the High Country**, Boone is perfectly positioned to offer endless mountain adventures and awe-inspiring experiences just a short drive (or hike) away from your accommodations.

”





DID YOU KNOW

- Boone is the first municipality in North Carolina to run town operations on 100% renewable electricity.
- Built around 1810, The Loom House at The Mast Farm Inn is the oldest inhabitable log cabin for rent in North Carolina.

Average Temperature

	HIGH	LOW
March	51°	31°
April	63°	40°
May	70°	48°



SUMMER

If you think summer in the south is too hot and humid, come to Boone and enjoy our refreshing mountain air.

Our average daytime high is only 78 degrees, and evening is filled with cool breezes.

Besides ideal weather, there's so much to enjoy outdoors that you may not go inside all season long. From hiking the valleys to cycling the Blue Ridge Parkway to zip lining through the canopy, there are adventures for all ages and skill levels. There's also whitewater rafting through world-class rapids, boating on picturesque mountain lakes, and tubing down North America's oldest river (ironically named the New River).

If you prefer education to adventure, check out Hickory Ridge History Museum to learn how early settlers adapted to mountain life in the late 1700s. Or treat the family to a blast from the past at Tweetsie Railroad, a Wild West theme park offering rides on two narrow-gauge steam locomotives, one of which is on the National Register of Historic Places.

“

The Boone area while being a recreational hotspot for both seasoned outdoor enthusiasts and beginner adventurers alike, is also full of locations where anyone can relax and have a low-key mini-adventure.

”





DID YOU KNOW

- Rocky Knob Mountain Bike Park encompasses 185 acres and more than 8 miles of stacked-loop trails, as well as bike skills areas, a new pump track, and a picnic pavilion.
- New to the area, Mountain Cat Off Road Adventures offers an exhilarating and accessible electric adventure vehicle tour through miles of lush mountain trails.

Average Temperature		
	HIGH	LOW
June	76°	55°
July	78°	58°
August	77°	58°

FALL

During leaf season, the Boone area is a blaze of color with a spectacular and world-famous color palette.

As the leaves start to fade and fall, there is still plenty to enjoy here this time of year. Boone is

host to events big and small, from Appalachian State University football to the fun and folksy Valle Country Fair to several arts and crafts shows.

If you're into crafts of a different kind—namely, craft beer—Boone can certainly help you expand your palate with tours and tastings at our local breweries. Or hit the trail—the Boone Area Wine Trail, that is—to sip and savor the sights at some of the most picturesque vineyards around.

A late-fall trip to any of the Boone area's "choose and cut" Christmas tree farms will have your entire family in the holiday spirit. Stroll the rows to find the perfect tree, and the farm staff will cut it, bale it, and secure it to your vehicle. Many area farms also offer hayrides, holiday music, hot chocolate, and apple cider.

“Winemakers in the High Country know the value of their grapes. The soil here mimics the most desirable vineyards in areas such as Napa, California, and Europe.”



DID YOU KNOW

- The Original Mast General Store in Valle Crucis still offers up a nostalgic 5¢ cup of coffee to visitors.
- Sugar Mountain Resort has been hosting its annual Oktoberfest celebration for over 30 years.

Average Temperature

	HIGH	LOW
September	71°	52°
October	63°	41°
November	53°	32°

WINTER

With three area ski resorts—Appalachian Ski Mountain, Beech Mountain, and Sugar Mountain—all within a 20-mile radius, Boone is considered the ski capital of the South.



The Boone area is home to the French-Swiss Ski College, which has taught more than a million people how to ski; some serious snowboarding parks; and the only double black diamond ski run in the region.

There are also plenty of fun winter activities for those seeking less of an adrenaline rush. In addition to skiing and snowboarding, Boone offers ice skating, sledding, snowshoeing, cross country skiing, and snow tubing. Hawksnest, located in nearby Seven Devils, is the largest snow tubing operation in the Southeast with up to 30 lanes.

After a day of fun in the great outdoors, head to one of our popular restaurants for a meal featuring local ingredients or cozy up by the fire back at your rental cabin. Whether there's snow or no, winter in Boone is always a memorable time.

“

Experience some of the best snow skiing in the Southeast! Since 1969, the Boone area has offered the longest and largest slopes in Western North Carolina.

”





DID YOU KNOW

- Appalachian Ski Mountain has the only Zamboni-maintained outdoor skating rink at an NC ski area.
- Beech Mountain Brewing Co. is one of the only breweries in the U.S. to be owned and operated by a ski area.

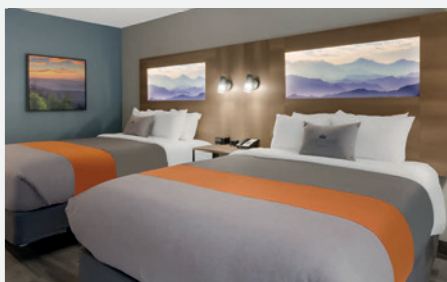
Average Temperature

	HIGH	LOW
December	45°	26°
January	42°	23°
February	44°	24°



GRAYSTONE LODGE

Graystone Lodge, an Ascend Hotel Collection® property in Boone, NC, is a 101-room boutique hotel that captures the heart of the High Country with a warm, welcoming mountain ambiance, enhanced modern design and upscale amenities.



Complimentary High Country Hot Breakfast
Indoor Pool • State-of-the-Art Fitness Center
Outdoor Sitting Area with a Fire Pit • EV Charging Stations



2419 NC-105, Boone, NC
828-264-4133





Inspired by the heart of Boone and the spirit of Appalachian State University, the pet-friendly La Quinta Inn & Suites by Wyndham Boone University combines a contemporary lodge design with mountain charm and upscale comforts.



Complimentary Bright Side Breakfast® • Free Fiber WiFi
EV Charging Stations • Business Center • Large Meeting Room
Fitness Center • Indoor Pool and Hot Tub

165 NC-105 Ext., Boone, NC
828-262-1234





LODGING

HOTELS & MOTELS

Blue Ridge Tourist Court

574 Old East King Street, Boone, NC 28607 • (828) 290-9848 • blueridgetouristcourt.com

Comfort Suites

1184 Highway 105, Boone, NC 28607 • (828) 268-0099 • choicehotels.com/nc052

Country Inn and Suites

818 E. King Street, Boone, NC 28607 • (828) 263-4501
radissonhotelsamericas.com/en-us/hotels/country-inn-boone-nc

Courtyard By Marriott

1050 Highway 105, Boone, NC 28607 • (828) 265-7676 • marriott.com/hkybn

Fairfield Inn and Suites

2060 Blowing Rock Road, Boone, NC 28607 • (828) 268-0677 • marriott.com/hkyfi

Graystone Lodge

2419 Highway 105, Boone, NC 28607 • (828) 264-4133 • www.thegraystonelodge.com

Hampton Inn & Suites

1252 US Highway 421 South, Boone, NC 28607 • (828) 386-6464
hilton.com/en/hotels/hkyboh-hampton-suites-boone/

Hidden Valley Motel

8725 Highway 105 South, Boone, NC 28607 • hiddenvalleymotel.com

Highland Hills Motel

2748 Highway 105, Boone, NC 28607 • (828) 264-2457 • (800) 948-5276 • highlandhillscabins.com

Holiday Inn University Area

1075 Highway 105, Boone, NC 28607 • (828) 264-0077
ihg.com/holidayinn/hotels/us/en/boone/hkybo/hoteldetail

Holiday Inn Express

1943 Blowing Rock Road, Boone, NC 28607 • (828) 264-2451 • (888) SEE-MTNS • expressboone.com

The Horton Hotel

611 W. King Street, Boone, NC 28607 • (828) 832-8060 • thehorton.com

La Quinta Inn & Suites

165 Highway 105 Ext., Boone, NC 28607 • (828) 262-1234
wyndhamhotels.com/laquinta/boone-north-carolina/la-quinta-boone/overview

Quality Inn & Suites

840 E. King Street, Boone, NC 28607 • (828) 266-1100
choicehotels.com/north-carolina/boone/quality-inn-hotels/nc790

Rhode's Motor Lodge

1377 Blowing Rock Road, Boone, NC 28607 • (828) 865-1110 • rhodesmotorlodge.com

Smoketree Lodge

11914 Highway 105 South, Banner Elk, NC 28604 • (800) 422-1880 • (828) 963-6505
smoketree-lodge.com

Towneplace Suites

1110 Meadowview Drive, Boone, NC 28607 • (828) 386-1717
marriott.com/hotels/travel/hkyts-towneplace-suites-boone/

	Breakfast Included	Restaurant	Pool	Pet-Friendly	Meeting Rooms
Blue Ridge Tourist Court				✓	
Comfort Suites	✓		✓		
Country Inn and Suites	✓		✓		
Courtyard By Marriott		✓	✓		✓
Fairfield Inn and Suites	✓		✓		✓
Graystone Lodge	✓		✓	✓	
Hampton Inn & Suites	✓		✓		✓
Hidden Valley Motel					
Highland Hills Motel					
Holiday Inn University Area		✓	✓		✓
Holiday Inn Express	✓		✓		✓
The Horton Hotel		Lounge		✓	
La Quinta Inn & Suites	✓		✓	✓	✓
Quality Inn & Suites	✓		✓	✓	
Rhode's Motor Lodge		✓		✓	
Smoketree Lodge			✓		
Towneplace Suites			✓	✓	✓

WELCOME TO SOUTHERN HOSPITALITY



Comfort[®]
SUITES
by CHOICE HOTELS

1184 Highway 105
828.268.0099

- One mile to ASU
- All rooms are Suites
- Microwave, Refrigerator, Sleeper Sofa
- Complimentary “Savory Starts” Breakfast
- Large Indoor Pool



WELCOME TO THE HIGH COUNTRY

Fairfield[®]
BY MARRIOTT

2060 Blowing Rock Road
828-268-0677

- Only two miles to ASU
- Walk to a variety of restaurants
- Indoor Pool & Fitness Room
- Complimentary Breakfast

LODGING CONTINUED

BED & BREAKFASTS

	Breakfast Included	Restaurant	Pool	Pet-Friendly	Meeting Rooms
Inn At Little Pond Farm 208 Valle Cay Drive, Valle Crucis, NC 28692 • (828) 297-1011 • www.innatlittlepondfarm.com	✓				
Lazy Bear Lodge 315 Lazy Bear Trail, Vilas, NC 28691 • (828) 963-9201 • Lazy-bear-lodge.com	✓				
Lovill House Inn 404 Old Bristol Road, Boone, NC 28607 • (828) 270-0831 • lovillhouseinn.com	✓				
Mast Farm Inn, The 2543 Broadstone Road, Banner Elk, NC 28604 • (828) 963-5857 • themastfarmlnn.com	✓	✓			
Taylor House Inn, The 4584 Highway 194 South, Banner Elk, NC 28604 • (800) 963-5581 • taylorhouseinn.com	✓				
CONFERENCE CENTERS					
Blowing Rock Conference Center 1818 GoForth Road, Blowing Rock, NC 28605 • (828) 295-7813 • brccenter.org					✓
Valle Crucis Conference Center 146 Skiles Way, Banner Elk, NC 28604 • (828) 963-4453 • vcconferences.org/accommodations					✓

RESORTS & SPAS

	Private Rooms	Cabins/Condos	Shared Rooms	Spa	Tennis Courts	Golf	Onsite Dining	Event Space
Art of Living Retreat Center 639 Whispering Hills Road, Boone, NC 28607 • (800) 392-6870 artoflivingretreatcenter.org	✓		✓				✓	✓
The Inn at Crestwood 3236 Shulls Mill Road, Boone, NC 28607 • (828) 963-6646 • crestwoodnc.com	✓						✓	✓
Westglow Resort & Spa 224 Westglow Circle, Blowing Rock, NC 28605 (800) 562-0807 • (828) 295-4463 • westglow.com	✓	✓		✓				✓
Willow Valley Resort 350 Bairds Creek Road, Vilas, NC 28692 • (828) 963-6551 willowvalley-resort.com	✓	✓	✓		✓	✓		✓

CABIN RENTAL COMPANIES

PROPERTY	PHONE	ADDRESS	WEBSITE	SLEEPS
Anderson Mountain Realty & Rentals	(828) 386-6536	184 N. Water Street #13 Boone, NC 28607	rentourcabins.biz	Rentals for 2-12 people.
Blue Ridge Mountain Rentals	(800) 237-7975	2464 US 421, Boone NC, 28607	blueridgerentals.com	Rentals for 2-24 people
Blowing Rock Properties	(828) 414-9026	1059 Main Street Blowing Rock, NC 28605	blowingrockmountaincabins.com	Rentals for 2-14 people
Blowing Rock Resort Rentals	(866) 800-9899	232 Ransom Street Blowing Rock, NC 28605	blowingrockresortrentals.com	Rentals for 2-14 people
Carolina Cabin Rentals	(828) 295-6000	491 George Wilson Road Blowing Rock, NC 28605	carolinacabinrentals.com	Rentals for 2-28 people
Foscoe Rentals	(800) 723-7341 (828) 963-8142	133 Echota Parkway Boone, NC 28607	foscoerentals.com	Rentals for 2-15 people
Jenkins Rentals	(828) 295-9888	452 Sunset Drive Blowing Rock, NC 28605	jenkinsrentals.com	Rentals for 2-12 People
Moonlight Cabin Rentals	(980) 253-4851	312 Avalon Way, Deep Gap, NC	moonlightcabins.com	Rentals for 6-12 People

COURTYARD[®]

BY MARRIOTT

Recently Renovated
Award Winning
Courtyard by
Marriott in the
Heart of Boone.



Whether traveling for business or pleasure, your stay at Courtyard is sure to be more comfortable, more productive and more enjoyable than ever before!

The state-of-the-art lobby at Courtyard provides greater flexibility and choices for our guests. At the center of it all is The Bistro, your destination for a great breakfast, or drinks and dinner during the evening. You'll also enjoy inviting, flexible spaces where you can work or relax, free Wi-Fi throughout and easy access to the latest news, weather and airport conditions via our GoBoard technology. Plus, our well-equipped fitness center, our indoor pool will help you stay refreshed and energized.

In the heart of Boone
Heated indoor pool and fitness center
Beautiful outdoor Courtyard
with cozy fire pit
Spacious guest rooms and suites, plus
1,000 square feet of meeting space
Free enhanced Wi-Fi access
Flat Screen HD-TV in guest rooms
The Bistro, on-site restaurant and
bar, open for breakfast & dinner
24-Hour Starbucks and Market
Smoke free environment

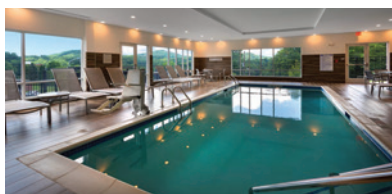
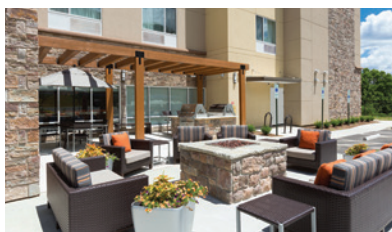


1050 Highway 105, Boone, NC 28607
1-828-265-7676 • www.marriott.com/hkybn

CABINS, COTTAGES & CONDOS

PROPERTY	PHONE	ADDRESS	WEBSITE	SLEEPS
5 Boys Retreat		Boone, NC	vrbo.com/433105	Sleeps 14
Ain't Life Grand Cabin		Sugar Grove, NC	airbnb.com/rooms/19808740	Sleeps 7
Alfie's Alpine Retreat	(919) 410-7573	Boone, NC	vrbo.com/3203160	Sleeps 11
Alpine A-Frame		Vilas, NC 28692	airbnb.com/rooms/22099429	Sleeps 4
Alpine Log Cabin	(352) 406-8195	Boone, NC	alpinelogcabin.com	Sleeps 6
Appalachian A-Frame	(585) 704-4055	Sugar Grove, NC	airbnb.com/rooms/33960938	Sleeps 8
Appalachian House	(828) 202-4262	270 W. King Street, Boone, NC 28607	whitefencefarmrentals.com/ appalachian-house/	Sleeps 4
Apple Cove Lodge	(585) 704-4055	122 Apple Cove Road Banner Elk, NC	applecovedestinations.com	Sleeps 12
Around the Bend Cabin	(954) 570-9256	238 Lazy Bear Trail Vilas, NC 28692	www.vrbo.com/126989	Sleeps 6
At Your Wits End Vacation Rentals	(828) 264-3535	193 Estate Boone, NC 28607	witsendrentals.com	Rentals for 2 - 10
Bear Tree Cabin		Valle Crucis, NC	vrbo.com/408243	Sleeps 6
Berry Blessed Cabin		Between Boone & Blowing Rock	vrbo.com/408243	Sleeps 12
Berry Hill Cottage	(919) 772-7166		ka4puv.com/berryhill.html	Sleeps 4
Beulahland Cabins	(828) 963-3443	632 N. Pine Run Road Boone, NC 28607	beulahlandcabins.com	Rentals for 2-6
Boone23	(336) 455-1216	Boone, NC 28607	www.airbnb.com/h/boone23	Sleeps 4
Boone Cabin Rentals	(800) 282-2507	1460 Snaggy Mountain Blvd. Boone, NC 28607	boonecabins.com	Rentals for 2-8
Brookview Log Cabin		Fair Park Drive Blowing Rock, NC 28605	vrbo.com/444666	Sleeps 12
Cabin on the Cascades	(947) 622-2246	Boone, NC	fireflyluxuryrentals.com	Sleeps 12
Cedar Pines Chalet	(828) 278-8536	Blowing Rock, NC	www.airbnb.com/h/ cedarpineschalet	Sleeps 16
Chalet Alpine	(704) 839-3343	Boone, NC	airbnb.com/rooms/7657565	Sleeps 8
Cora's Cozy Cottage		Boone, NC	airbnb.com/rooms/54279019	Sleeps 4
Crider Creek Manor	(919) 410-7573	Deep Gap, NC	vrbo.com/3112463	Sleeps 14
Days Inn Moutian Retreat		Deep Gap, NC	evolve.com/vacation-rentals/us/ nc/deep-gap/440840	Sleeps 7
Dog Mountain	(980) 272-7790	Boone, NC	pawcationrentals.com/ dog-mountain-orp5b5c06cx	Sleeps 3-6

PROPERTY	PHONE	ADDRESS	WEBSITE	SLEEPS
Elk Chalet, The	(704) 685-0601	Foscoe, NC	walkerhomesley.staydirectly.com	Sleeps 13
Gingerbread Cabin, The		Boone, NC	fireflyluxuryrentals.com	Sleeps 9
Harmony View	(800) 237-7975	Between Boone & Blowing Rock	blueridgerentals.com/rentals/harmony-view	Sleeps 9
Hemlock Hill Cabin	(312) 848-0352	Blowing Rock	hemlockhillcabin.com	Sleeps 8
Hemlock Ridge Cabin	(336) 998-5252	526 Spice Bottom Trail Banner Elk, NC 28604	hemlockridgenc.com	Sleeps 8
Heritage Hill Cabins	(352) 274-4896	129 Alnic Lane Valle Crucis, NC 28692	heritagehillcabins.com	Sleeps up to 6 (5 cabins)
HH Mountain Happy Cabin		Vilas, NC	airbnb.com/rooms/7956684	Sleeps 9
High Mountain Cabin Rentals	(866) 931-6210	434 McConnell Street Jefferson, NC, 28640	highmountaincabinrentals.com	Sleeps 2-17
Kradels Kabins	(704) 657-1735	Boone & Deep Gap NC	kradelskabins.com	Sleeps 2-6
Moon-A-Chalet		Blowing Rock, NC	airbnb.com/h/moon-a-chalet	Sleeps 2
Mountain Magic Resort	(828) 278-8070	858 Rush Branch Road Sugar Grove, NC 28679	airbnb.com/users/show/22503460	Sleeps 6



TOWNEPLACE SUITES[®] BY MARRIOTT



- Pet-friendly so that you never miss a moment with your four-legged friend
- Complimentary Breakfast and Free Wi-Fi
- Outdoor Grilling Area and Fire Pit

1110 Meadowview Drive, Boone, NC 28607
828.386.1717
www.marriott.com/hotels/travel/hkys-towneplace-suites-boone/

CABINS, COTTAGES & CONDOS (CONTINUED)

PROPERTY	PHONE	ADDRESS	WEBSITE	SLEEPS
Mt. Sinai Cabin		Between Boone & Blowing Rock	vrbo.com/280893	Sleeps 14
Owl's Roost		Valle Crucis, NC	vrbo.com/328149	Sleeps 8
Parkway Cabins	(828) 262-5024	749 Turkey Knob Boone, NC 28607	parkwaycabins.com	Sleeps 6
Popi's Porch		Blowing Rock, NC	airbnb.com/rooms/52345411?	Sleeps 11
Red Feather Cabins	(828) 295-2172	Red Feather Trail Boone, NC 28607	redfeathercabins.guesty websites.com	Sleeps 4 (13 cabins)
Rich Summit View	(904) 994-2854	Zionville, NC	houfy.com/3403	Sleeps 6
Ridgeview Manor	(919) 630-4536	380 Pine Ridge Drive Boone, NC 28607	vrbo.com/280084ha	Sleeps 24
Rivers Edge Covered Bridge Cabin	(803) 242-7695	Valle Crucis	airbnb.com/Rooms/40325477	Sleeps 6
Serenity Falls		9710 Elk Creek Road Deep Gap, NC 28618	ourcabinonthecreek.com/ Serenityfalls/	Sleeps 8
Solar Farmhouse		2752 Dutch Creek Road Valle Crucis, NC 28604	airbnb.com/Rooms/19823158	Sleeps 6
Starry Nights Lodge	(704) 619-5401	216 Veronica Way Vilas, NC 28692	vrbo.com/444251	Sleeps 10
Storybook A-Frame		141 Lynn Hill Lane Boone, NC 28607	airbnb.com/rooms/28800664	Sleeps 4
Sweet Escape	(803) 242-7695	Blowing Rock, NC	airbnb.com/rooms/32303105	Sleeps 10
Sweet's River Nest	(803) 242-7695	Valle Crucis, NC	airbnb.com/rooms/41737758	Sleeps 12
Sweetwater Escape	(828) 773-8623	316 Tater Hill Road Zionville, NC 28698	sweetwaterescape.com	Sleeps 1-6
Swiss Mountain Village	(828) 295-3373	2324 Flat Top Road Blowing Rock, NC 28605	swissmountain.com	Rentals for 2-8 people
The 828 Overlook	(828) 773-2413	Boone, NC	828realestate.com/828overlook	Sleeps 4
Valle Crucis Farm Cabin Rental	(828) 386-9614	159 Creekstone Drive Banner Elk, NC 28604	vcfarm.com/cabins	Sleeps 4
White Fence Farm Downtown House	(828) 964-6767	270 W. King Street Boone, NC 28607	whitefencefarmrentals.com/white- fence-farm-downtown-boone/	Sleeps 6
Willet Ponds Farm	(828) 297-6573	1601 Willet Miller Road Todd, NC 28684	willetpondsfarm.com	Sleeps 9
Winkler's Creek Cabins	(828) 264-2863	380 Indian Springs Run Boone, NC 28607	winklerscreekcabins.com	Sleeps 2
Wolf's Den	(704) 906-6645	Valle Crucis, NC	vrbo.com/435108	Sleeps 18 

CAMPING

PROPERTY	PHONE	ADDRESS	WEBSITE	SEASON
Blue Bear Mountain Camp	(828) 406-4226	196 Blue Bear Mountain Road Todd, NC 28684	bluebearmountain.com	Open Year-Round.
Boone Cocoon	(828) 278-4554	Boone, NC 28607	boonecocoon.com	Open May-December.
Boone KOA	(828) 264-7250	123 Harmony Mountain Lane Boone, NC 28607	koa.com/Campgrounds/Boone/	Open May 1 - October 31.
Flintlock Family Campground	(888) 850-9997 (828) 963-5325	171 Flintlock Campground Drive Boone, NC 28607	flintlockcampground.com	Open April-October.
Glamping Unplugged	(828) 386-7397	Boone, NC 28607	glampingunplugged.com	Open Year-Round.
Grandfather Campground	(800) 788-2582 (828) 355-4535	125 Profile View Road Foscoe, NC 28607	grandfatherrv.com	Open Year-Round.
Honey Bear Campground	(828) 266-8914	229 Honey Bear Campground Road Boone, NC 28607	honeybearcampground.com	Open May - October, Weather Permitting.
Julian Price Campground	(877) 444-6777 (828) 963-5911	A National Park Service Camp- ground Located at Milepost 297 on The Blue Ridge Parkway.	recreation.gov	Open May - October
Vanderpool Campground	(828) 297-3486	120 Campground Road Vilas, NC 28692	vanderpoolcampground.com	Open Year-Round. ■

**FIRST TIME
VISITING BOONE?**



**Scan Code for our
First Timers' Guide**



High Country
Vacation Rentals

Call & Book Yours Today!

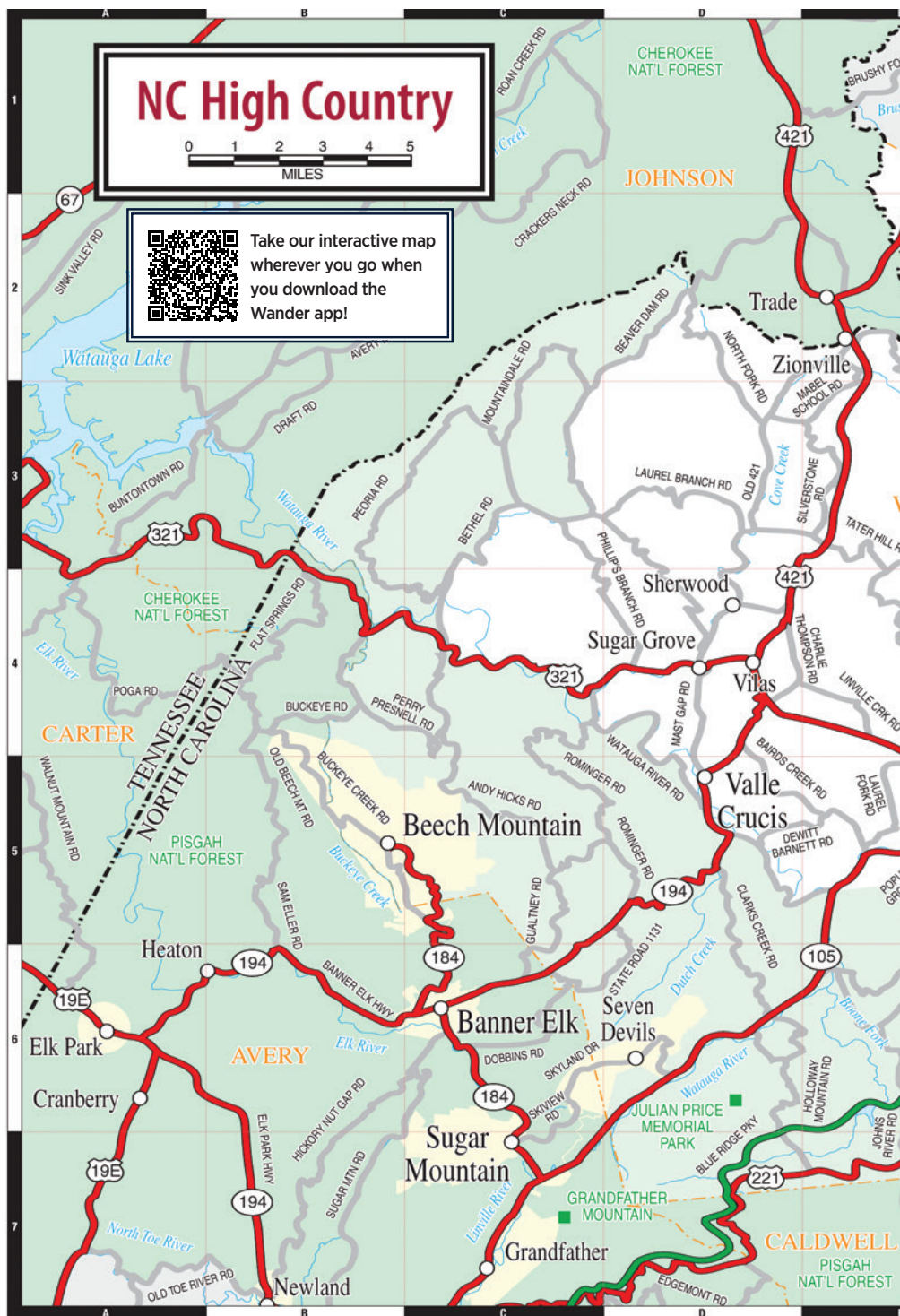
**800.438.7803
828.295.9886**

JenkinsRealtors.com



**A full service company with over 43 years
representing vacation rentals, long term
rentals and sales in the High Country.**



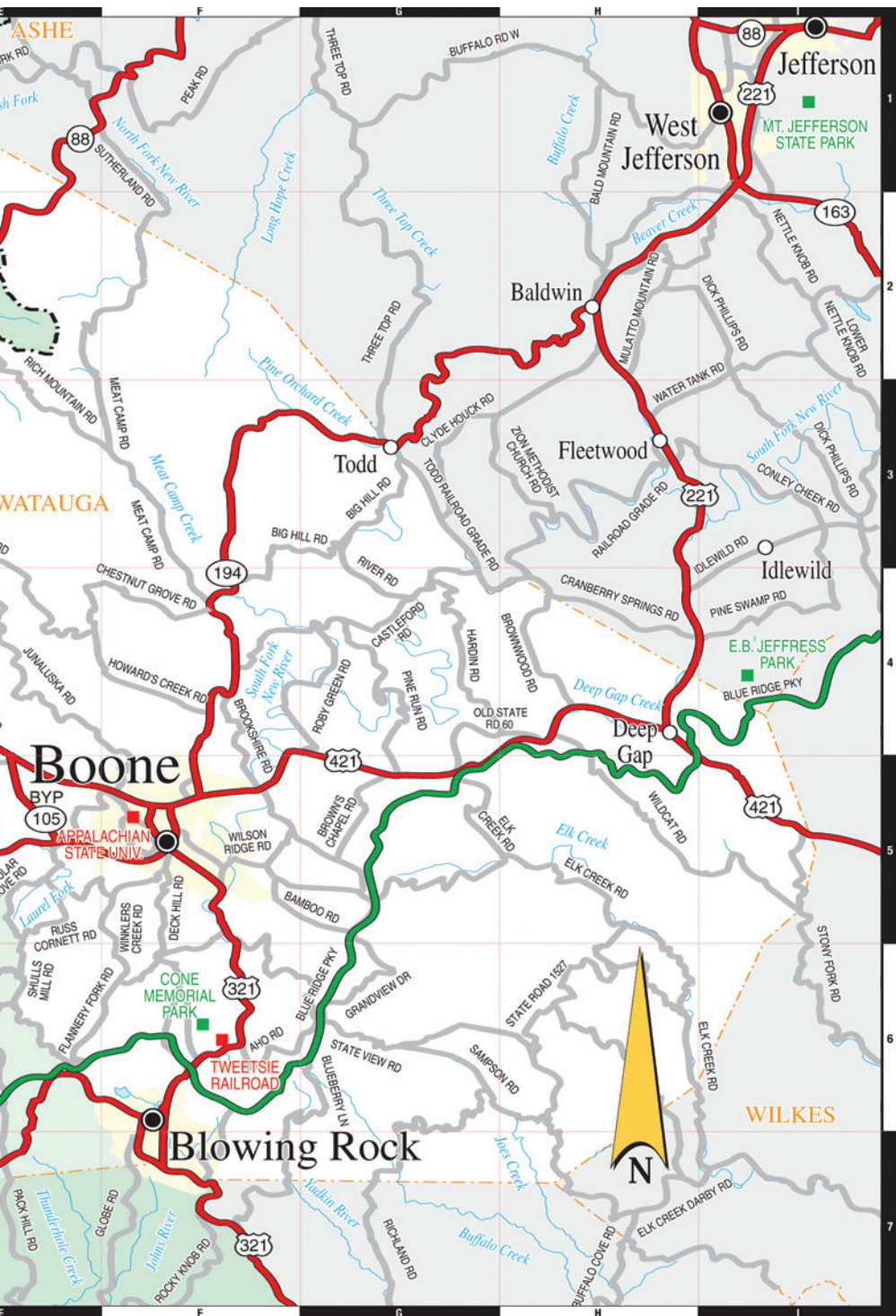


NC High Country

0 1 2 3 4 5
MILES



Take our interactive map
wherever you go when
you download the
Wander app!





PLAN AHEAD AND PREPARE

Learn about parks and attractions before visiting. Pack the appropriate food, water, and layers.



STICK TO TRAILS AND SIDEWALKS

Keep to designated trails, camp at existing or designated sites, practice waterfall safety, and always follow posted signage.



TRASH YOUR TRASH

Pack it in, pack it out. Place any and all waste in a garbage bag to take home.



LEAVE IT AS YOU FOUND IT

Instead of handling them, take pictures of flowers and insects. Also, don't stack river rocks.



BE CAREFUL WITH FIRE

Check local regulations, gather wood locally, and burn wood completely wvto ash.



KEEP WILDLIFE WILD

Observe all wildlife from a safe distance. Store food securely and never feed a wild animal.



BE CONSIDERATE OF OTHERS AND SHARE THE OUTDOORS

Respect others so the Boone area's natural spaces will be welcoming and relaxing for all.



Awe-inspiring
Boone is
relying on us.

MAKE IT YOUR NATURE

to follow the Outdoor NC principles when recreating in outdoor spaces to help preserve the natural beauty of the Boone area for years to come.

THINGS TO DO



No matter which season beckons you to the Boone area, outdoor adventure will be waiting. The promise of our cool springs, mild summers, and colorful autumns is the only coaxing you'll need to get outside and go biking, hiking, fishing, ziplining, kayaking, whitewater rafting, or tubing. Or maybe your idea of excitement is a stroll through a street festival or listening to live music on the front lawn of an historic home. With everything from extreme mountain sports to relaxing evenings outdoors, trips back in time to rides your kids will never forget, you will see why Boone has been *Inspiring Awe Since 1849*.

In addition to nationally known attractions, like Grandfather Mountain, the Blue Ridge Parkway, and Tweetsie Railroad, Boone also has a vibrant art, history, and cultural scene. Tour frescoes that adorn area churches or visit the historic Jones House for galleries and live music events. Appalachian State University's Performing Arts Series and annual Appalachian Summer Festival bring some of the most well-known performers to the area all year long.

The adventure doesn't end when the cold weather begins. The Boone area boasts the most concentrated cluster of ski slopes in the entire region, including several black diamond slopes for the truly daring. You'll also enjoy snowboarding, snow tubing, sledding, ice skating, snowshoeing, and cross-country skiing. Consider spending the holidays in our winter wonderland, or at least make a weekend trip out of a visit to one of our "choose and cut" tree farms. It's always a good time to start a new family tradition.

A photograph of a man in historical western attire, including a brown jacket, a dark hat, and a scarf, holding a long rifle. He is standing in a wooded area. The text "EXPLORE boone" is in the top left corner.

HISTORY COMES TO LIFE AT HORN IN THE WEST

Learn more at HornInTheWest.com.

A photograph of a man and a woman in historical costumes. The man is wearing a dark hat and a dark jacket, and the woman is wearing a pink dress and a large pink hat. They are standing in a room with a piano and a large wheel in the background. The text "Professor Finnegan's studio" is in the top left corner.

Professor Finnegan's studio

Old Time Photos with a Modern Twist!

LEARN MORE
PROFESSORFINNEGANS.COM

A square QR code located in the bottom right corner of the advertisement.

SCAN CODE

ATTRACTIONS

THE BLOWING ROCK

(828) 295-7111

432 The Rock Road, Blowing Rock, NC 28605

www.theblowingrock.com

North Carolina's Oldest Travel Attraction.

BLUE RIDGE PARKWAY

(828) 298-0398

www.blueridgeparkway.org

America's most scenic drive, the 469-mile Blue Ridge Parkway stretches from Shenandoah Nat'l Park in Virginia to the Great Smoky Mtns National Park in southwest NC. The 75+ year old parkway was completed with the Linn Cove Viaduct, an engineering marvel that carries travelers across the slopes of Grandfather Mountain (near milepost 304).

GRANDFATHER MOUNTAIN

(800) 468-7325

www.grandfather.com

On US Hwy 221 near Linville, Parkway milepost 305. Grandfather is the highest peak in the Blue Ridge Mountains and is designated by the UN as an International Biosphere Reserve. Natural habitat for bears, cougars, elk, bald eagles, and otters. Nature museum includes displays of gemstones, birds, wildflowers, mushrooms and berries. Home of the mile-high swinging bridge and scenic hiking trails. Open year round, weather permitting. Closed Thanksgiving and Christmas.

HAWSKNEST ZIPLINE

(828) 963-6561

2058 Skyland Drive, Seven Devils, NC 28604

www.hawksnestzipline.com

Soar over trees, lakes, and creeks with panoramic views at Hawksnest Zipline. The park has 4 miles of ziplines, with 20 Cables, two over 2,000' and one over 1,500', and three swinging bridges. In winter, come back and snow tube.

HIGH GRAVITY ADVENTURES

AERIAL ADVENTURE PARK

(828) 266-0151

215 Tweetsie Railroad Lane,

Blowing Rock, NC 28605

www.highgravityadventures.com

High Country adventure for the whole family. Experience our award-winning zip line tour, scream on the giant swing, and explore 75+ challenges in our aerial adventure park. Tickets and information available online.

HORN IN THE WEST

(828) 264-2120

591 Horn in the West Drive, Boone

www.horninthewest.com

*Now in its 72nd season. Historical outdoor drama of the Revolutionary War, performed in the Daniel Boone Amphitheater in Boone. **Late June through early August**, nightly except Monday, beginning at 8pm. Reserved seating.*

MYSTERY HILL

(828) 264-2792

129 Mystery Hill Lane, Blowing Rock

www.mysteryhill.com

Mystifying and educational attraction with blend of science, optical illusions & natural phenomena. Gift shops. Affiliated with the Appalachian Heritage Museum & Native American Artifacts Museum. Open year round.

ORIGINAL MAST GENERAL STORE IN VALLE CRUCIS

(828) 963-6511

www.mastgeneralstore.com

A destination since 1883, the store supplies its neighbors and visitors with all they need for life.

SKY VALLEY ZIP TOURS

(828) 264-0002

634 Sky Ranch Road, Blowing Rock, NC 28605

www.skyvalleyziptours.com

Sky Valley Zip Tours is just minutes from Boone, but deep in the woods in the spectacular setting of the former Camp Sky Ranch. Daytime and Nighttime Canopy Zipline tours. Try the new, accessible, Electric Adventure Vehicle tours with Mountain Cat Off Road Adventures.

TWEETSIE RAILROAD

(800) 526-5740

300 Tweetsie Lane, Blowing Rock, NC 28605

www.tweetsie.com

Wild West family theme park featuring a three-mile steam-powered train ride, live entertainment, rides, shopping, and a Deer Park Zoo. Check their website for hours and special event dates including Ghost Train and Tweetsie Christmas.

NEARBY ATTRACTIONS

ASHE COUNTY CHEESE FACTORY

(336) 246-2501

106 E. Main Street, West Jefferson

www.ashecountycheese.com

Open year round from 8:30am to 5pm Monday through Saturday. Closed Sunday. North Carolina's oldest cheese plant, producing quality cheese since 1930. See how cheese is made and visit the cheese shop where they sell more than 20 varieties of original Ashe County cheese.

CHURCHES OF THE FRESCOES

(336) 982-3076

Holy Trinity Church in Glendale Springs

St. Mary's Church in West Jefferson.

www.ashefrescoes.org

The most significant fresco art in the South. Open all year, 9a.m. - 6p.m. Guide service provided by appointment. No admission charge. Greenhouse Craft Shop nearby. Buses please call in advance.

LINVILLE CAVERNS

(800) 419-0540

19929 US 221 North, Marion

www.linvillecaverns.com

NC's only natural show caverns. See website for operating hours. Tickets are available on-site.

BIKING / CYCLING

AS THE CROW FLIES MOUNTAIN BIKE GUIDES

(803) 463-9392

asthecrowflies.bike

Offers guided mountain biking trips at several trail systems around Boone.

BOONE BIKE & TOURING

(828) 262-5750

774 East King Street, Boone

www.boonebike.com

Sales and full service repair shop.

MAGIC CYCLES

(828) 265-2211
140 South Depot Street, Boone
www.magiccycles.com
Sales, service and rentals of road and mountain bikes.

RHODDIE BICYCLE OUTFITTERS

(828) 414-9800
7593-B Valley Boulevard, Blowing Rock
www.rhodiebicycleoutfitters.com

RIVER GIRL FISHING CO.

(336) 877-3099
4041 Railroad Grade Road, Todd
www.rivergirlfishing.com
Offers bike rentals for road cycling along Todd Railroad Grade Road along the scenic New River.

ROCKY KNOB BIKE PARK

285 Mountain Bike Way, Boone
(off Highway 421 - East of Boone)
Check out Rocky Knob Park for mountain biking and hiking trails. The 185 acre park includes 8 miles of mountain biking trails, a new state-of-the-art pump track skills area, an outdoor playground and a picnic pavilion.

DAY SPAS

180 FLOAT SPA

(828) 832-8180
249 Kimberly Drive, Boone, NC 28607
www.180floatspa.com
Float Therapy. Massage Therapy.

7TH HEAVEN DAY SPA

(828) 963-2355
4457 Hwy. 105 South, Boone, NC 28607
www.7thheaven-boone.com
Massage Therapy.

ALCHEMY CENTER FOR HEALING THERAPIES

(828) 832-8080
232 Furman Road, Boone, NC 28607
www.alchemyboone.com
Massage, Acupuncture, Therapeutic Yoga, and more.

THE CARE COLLECTIVE

(828) 406-4344
584 State Farm Road, Boone, NC 28607
www.takecareboone.com
Massage therapy and foot soaks, plus traditional and infrared saunas.

HEAVENLY TOUCH MASSAGE

(828) 264-4335
246-D Wilson Drive, Boone, NC 28607
heavenlytouchboone.com
Massage, facials, lashes, waxing, tanning, and nails.

RIVER BIRCH NORDIC SAUNA

(919) 901-2057
2543 Broadstone Road, Banner Elk, NC 28604
www.riverbirchsauna.com
Mobile sauna and cold plunge.

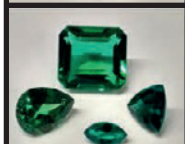
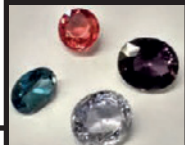
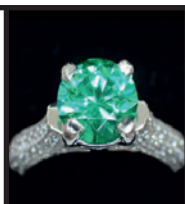
THE SPA AT CHETOLA

(828) 295-5531
185 Chetola Lake Drive, Blowing Rock
www.chetola.com/spa
Massage therapy, facials, hair and nail salon.



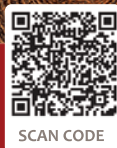
**537 Main Street
Blowing Rock,
NC 28605
828-414-9889**

mccoyminerals.com



**Experience traditional frontier
tomahawk and knife throwing!
Great for ALL ages!**

**LEARN MORE:
TOMAHAWKHILL.COM**



FAMILY ENTERTAINMENT

CENTER 45 – CLIMBING & FITNESS

(828) 386-1550

200 Den Mac Drive, Boone
www.center45.com

Experience Boone's indoor climbing facility and aerial fitness center. They offer a variety of programs for adults and youth.

CHILDREN'S PLAYHOUSE, THE

(828) 263-0011

400 Tracy Circle, Boone
www.goplayhouse.org

COUNTRY RETREAT FAMILY BILLIARDS

(828) 963-6260

9021 Highway 105 South
www.countryretreatbilliards.com

Located in Foscoe between Boone and Banner Elk

HIGH COUNTRY LANES

(828) 264-3166

www.highcountrylanes.com

261 Boone Heights Drive, Boone

16 lanes plus cornhole, darts and a restaurant.

MYSTERIUM ESCAPE ADVENTURE

(828) 865-0009

737 W. King Street, Boone
www.mysteriumboone.com

Mysterium is an immersive Escape Room Adventure. Rooms are themed using incredible theatrical elements such as lighting, decor, sound, and video.

REGAL CINEMAS

(844) 462-7342

210 New Market Center, Boone
www.regmovies.com

Seven screens.

ROCK DIMENSIONS CLIMBING TOWER

(828) 265-3544

139 S. Depot Street, Boone
www.rockdimensions.com

40' Climbing tower in downtown Boone.

SKATEWORLD

(828) 297-3296

Intersection of US Highway 321 & 421 in Vilas

Open Weekends, available for groups and private parties.

SUMMIT, THE

(828) 532-5442

278 Industrial Park Drive, Boone
www.thesummitpb.com

Indoor Pickleball Courts.

SUNRISE MOUNTAIN MINI GOLF

(828) 265-4653

1675 Highway 105, Boone

WATAUGA COMMUNITY RECREATION CENTER

(828) 264-9511

231 Complex Drive, Boone

Indoor pools, walking track and 4 basketball/volleyball courts, weight room, outdoor tennis and pickleball courts, tot lot playground and athletic fields.

WILDERNESS RUN ALPINE COASTER

(828) 898-7866

3265 Tynecastle Highway Banner Elk
www.wildernessrunalpinecoaster.com

Alpine coaster and ropes course.

FARM TOURS

APPLE HILL FARM

(828) 963-1662

400 Apple Hill Road, Banner Elk
www.applehillfarmnc.com

A place where animals talk and people listen! Apple Hill Farm, a mountaintop Alpaca farm, offers public and private family tours by appointment only. Advanced tickets can be purchased online. Special events year-round.

ARBORCREST GARDENS

(828) 263-3358

174 Evergreen Lane, Boone
www.arborcrestgardens.org

Paved trails through a 26-acre garden. Tour by foot or by electric vehicle. Open Fridays year-round by appointment only.

HARVEST FARM

(828) 260-0765

3287 NC Highway 194, Valle Crucis
www.harvestfarmwnc.com

U-pick flower farm tours in summer and Pumpkin Patch and Corn Maze in fall. Check website for opening dates.

HIDDEN HAPPINESS BEE FARM

(336) 973-5412

Chesnut Mountain Road, Deep Gap
www.hiddenhappiessbeefarm.com

Learn about beekeeping, visit the gift shop for candies and, bee-made products, and see a living hive.

NEW RIVER CORN MAZE & PUMPKIN PATCH

(828) 264-2986

www.newrivercornmaze.com

Only open in fall, check website for hours.

SWINGING BRIDGE FARM

(828) 964-2030

711 Old Glade Road, Deep Gap
www.swingingbridgefarm.com

Tours by appt. only, please call. U-pick blueberries in spring, and Choose and Cut Christmas Trees in fall.

FISHING & HUNTING

Call 888-2HUNT-FISH to obtain a license. The game-fish waters of the Blue Ridge Parkway are federally-regulated and require a permit. The federal season is in conjunction with North Carolina's, beginning the first Saturday in April and ending the final weekend in February. Hunting: NC Wildlife Commission (800) 662-7137. Licenses are required for all hunting and are sold at several area sporting goods stores. Hunting is not permitted at Grandfather Mtn. or on the Blue Ridge Parkway lands.

BLUE RIDGE ANGLERS

(828) 773-3751

www.blueridgeanglers.com

CHETOLA FLY FISHING & SPORTING RESERVE

(828) 264-6200

185 Chetola Lake Drive, Blowing Rock

Fly fishing wade and float trips and casting clinics. Sporting Reserve features a 12-station sporting clay course, a pistol & rifle range, an archery range, and more.

DUE SOUTH OUTFITTERS

(828) 355-9109

2575 Highway 105, Suite 60, Boone

www.duesouthoutfitters.com

Fly fishing outfitter and fly fishing guide. Offering guided trips, gear, clinics and lessons.

ELK CREEK OUTFITTERS

(706) 957-5864

1560 Highway 105, Boone

www.ecoflyfishing.com

FOSCOE FISHING COMPANY

(828) 963-6556

8857 Highway 105 South, Banner Elk

www.foscoefishing.com

Full line fly shop and outfitters. Offering guided wade and float trips, fly fishing school and fly tying classes.

GRANDFATHER TROUT FARM

(828) 963-5098

10767 Highway 105 South, Banner Elk

HIGH COUNTRY GUIDE SERVICE

(828) 865-3474

140 S. Depot Street, # 1, Boone

www.flyfishthehighcountry.com

MOUNTAINBOUND FLY GUIDES

(828) 963-5463

www.mountainboundflyguides.com

MOUNTAINS TO COAST FLY FISHING & HUNTING GUIDE SERVICE

(828) 335-3474

www.mountainstocoast.com

RIVER GIRL FISHING CO.

(336) 877-3099

4041 Railroad Grade Road, Todd

www.rivergirlfishing.com

Located in the historic Todd train depot, they offer full service fly fishing lessons and guided trips.

RIVERSTONE FLY FISHING

(828) 719-1543

www.riverstoneflyfishing.com

SPECKLED TROUT OUTFITTERS, THE

(828) 773-8852

www.thespeckledtroutoutfitters.com

Guided Fly Fishing floats and hiking excursions. Fly shop is across from the Speckled Trout restaurant.

GALLERIES & MUSEUMS

BLOWING ROCK ART & HISTORY MUSEUM

(828) 295-9099

159 Ginny Stevens Lane, Blowing Rock

BlowingRockMuseum.org

Free Admission year-round, open Tuesday - Sunday. Rotating exhibits, weekly workshops, and special events.

CARLTON GALLERY

(828) 963-4288

10360 Highway 105 South, Banner Elk, NC 28604

www.carltongallery.com

CATHERINE SMITH GALLERY

(828) 262-4046

733 Rivers Street, Boone

In ASU's Schaefer Center.

art.appstate.edu/cjs

Rotating art and sculpture exhibits. Open year-round, Monday - Friday from 10 am to 5 pm. Free admission.

HICKORY RIDGE MUSEUM

(828) 264-2120

591 Horn in the West Drive, Boone

www.horninthewest.com

Tour six historic 18th and 19th-century cabins which all originated in the High Country of NC. Open April - November. Historic interpreters, dressed in period clothing, guide tours during the "Horn in the West" season in June - August.

JONES HOUSE, THE

(828) 268-6280

604 West King Street, Downtown Boone

www.joneshouse.org

Art gallery and cultural center. Summer concerts on the lawn. Free admission during regular gallery hours.

NATIVE AMERICAN ARTIFACT MUSEUM

(828) 264-4726

129 Mystery Hill Lane, Blowing Rock

Open year-round in the Mystery Hill complex.

Nth DEGREE GALLERY

(828) 919-6919

683 W. King Street, Boone



**RODEO
RAMPAGE**

BULL RIDING CHALLENGE

**Do You Have What it Takes
to Tame the Beast?**

LEARN MORE
RODEORAMPAGE.COM

SCAN CODE

THINGS TO DO

TURCHIN CENTER FOR THE VISUAL ARTS

(828) 262-3017

King Street, Downtown Boone

www.turchincenter.org

Exhibits change regularly. Free Admission.

GEM MINING

DOC'S ROCKS GEM MINE

(828) 414-9889

100 Shoppes on the Parkway Road, Blowing Rock

www.docsocks.org

Education-based gem mine, an indoor 9-hole putt putt course, VR laser tag, and more..

FOGGY MOUNTAIN GEM MINE

(828) 963-4367

4416 Highway 105 South, Boone

2422 Highway 321 South, Boone

www.foggyMountainGems.com

Two locations to mine for precious gemstones all year long. Indoor and outdoor plumes. Learn where types of gemstones originate around the world and have them cut and set into custom jewelry.

GREATER FOSCOE MINING COMPANY

(828) 963-5928

8998 NC Highway 105 South, Banner Elk

Located 7.7 miles south of Boone on Hwy 105.

2242 Highway 321 south, Boone

www.foscoeminingco.com

Take an old-timey Gem Mine adventure to find Emerald, Ruby, Sapphire and much more. Cut and polish your gems to create beautiful keepsake jewelry.

PROSPECTOR HILL GEM MINING

(828) 264-2792

129 Mystery Hill Lane, Blowing Rock

Located inside the Mystery Hill Complex.

GOLF

BOONE GOLF CLUB

(828) 264-8760

433 Fairway Drive, Boone

www.boonegolfclub.com

Open mid-April through Thanksgiving, weather permitting. 18-hole championship course designed by Ellis Maples.

MOUNTAIN AIRE GOLF COURSE

(336) 877-4716

1396 Fairway Ridge Drive, West Jefferson, NC

www.mountainaire.com

Beautiful 18-hole public golf course with spectacular views and reasonable rates.

MOUNTAINEER GOLF CENTER

(828) 264-6830

115 Beverly Heights Drive, Boone

www.mgcboone.com

Driving Range.

SUGAR MOUNTAIN PUBLIC GOLF CLUB

(828) 898-6464

1054 Sugar Mountain Drive, Sugar Mountain, NC

www.seesugar.com/golf

An 18-hole, par 64 course with views of the surrounding area from 4,000 ft above sea level.

TEE 2 GREEN

(336) 403-0509

278 Shoppes on the Parkway Road, Blowing Rock

www.tee2greenindoorgolf.com

Indoor Golf Simulators.

WILLOW CREEK GOLF COURSE

(828) 963-6865

354 Bairds Creek Road, Vilas

www.willowvalley-resort.com/willow-creek-golf-course

9-Hole, Par 3 Executive Course.

HORSEBACK RIDING

BANNER ELK STABLES

(828) 898-5424

796 Shomaker Road, Banner Elk

www.bannerelkstables.com

Banner Elk Stables offers horseback riding for the entire family year-round.

BLOWING ROCK TRAIL RIDES

www.blowingrocktrailrides.com

Year-round trail rides at Moses Cone Park.

CARRIAGE RUN CARRIAGE SERVICE

(704) 600-5403

www.carriage-run.com

Horse-drawn carriage rides.

DUTCH CREEK TRAILS

(828) 297-7117

3740 Bethel Road, Sugar Grove, NC 28679

www.dutchcreektrails.com

Wooded trails, old farm fields, valley views surrounded by the beautiful Blue Ridge Mountains.

GRANDFATHER STABLES

(828) 963-5000

534 Church Hollow Road, Boone

www.grandfatherstables.com

Riding lessons.

VX3 TRAIL RIDES

(828) 963-0260

By Appointment, Blowing Rock

www.vx3trailrides.com

VX3 Trail Rides offers customized horseback riding with experienced trail guide Tim Vines. Moses Cone Park Trails on the Blue Ridge Parkway are the best in the southeast.

OFFROAD ADVENTURES

APPALACHIANS OUTDOOR ADVENTURES

(828) 297-1289

www.appalachiansoutdooradventures.com

ATV/4 Wheeling tours, 18 years of age and older.

MOUNTAIN CAT OFF ROAD ADVENTURES

(828) 264-0002

634 Sky Ranch Road, Blowing Rock, NC 28605

www.skyvalleyziptours.com/about-sky-valley/mountain-cat/

Try a new exhilarating adventure with fully electric 4WD off-road vehicles. Designed to be accessible for folks with some mobility impairments.

PATRIOT MTN OFFROAD PARK

(828) 773-0733

3588 NC Highway 194, Sugar Grove

www.patriotmountainoffroadpark-offroadingarea.business.site

ROCK CLIMBING & RIVER ADVENTURES

EDGE OF THE WORLD

(800) 789-EDGE, www.edgeoworld.com

Canoeing, rafting, rappelling and rock climbing trips.

HIGH MOUNTAIN EXPEDITIONS

(828) 202-7296

www.highmountainexpeditions.com

Hiking, river trips, canoe and kayak rentals, rock climbing. Guided tours for all ages.

RIVER & EARTH ADVENTURES

(828) 355-9797

www.raftcavehike.com

RIVERGIRL FISHING CO.

(336) 877-3099

4041 Railroad Grade Road, Todd

www.rivergirlfishing.com

A full service fishing and rental shop in historic Todd, NC. In addition to fishing, they also rent bikes and offer tubing, canoeing and kayaking on the New River.

ROCK DIMENSIONS

(828) 265-3544

www.rockdimensions.com

Guided rock climbing, rappelling, and caving adventures. Climbing tower at Foothillcampers in downtown Boone. Groups and families welcome.

WAHOO'S ADVENTURES

(800) 444-RAFT • www.wahoosadventures.com

Seasonal raft, canoe and tube trips on area rivers.

NATURAL WONDERS

BOONE AREA RIVERS

Four rivers originate in the region, each flowing in a different direction. The Watauga flows west, the New flows north, the Yadkin flows east and the Catawba flows south. Each has its own personality from easy canoeing to whitewater.

DANIEL BOONE NATIVE GARDENS

651 Horn in the West Drive, Boone, NC. 28607

www.danielboonenativegardens.org

A collection of North Carolina native plants are arranged in an informal landscape design.

LINVILLE FALLS RECREATION AREA

(828) 765-1045

Blue Ridge Parkway, milepost 316.

A series of two falls (upper is 12' and lower is 90') plunge into the 2,000-foot deep Linville Gorge.

A one mile round trip hike leads to the upper falls and other trails lead to more views.

LINVILLE GORGE WILDERNESS AREA

(828) 652-4841

Access to wilderness area off NC Hwy 183.

The Gorge Wilderness Area is a primitive natural environment. A permit is needed to enter and may be obtained at the District Ranger's Office in Nebo, NC (exit #90 off I-40). Open May - Oct, weekend and holiday camping only. Reservations accepted 1 month in advance.

THE ORCHARD AT ALTPASS

(888) 765-9531

From the Blue Ridge Parkway milepost 328.3 off of Orchard Rd., Spruce Pine. Historic, breathtaking apple orchard with heirloom apples hayrides, gift shop, storytelling, entertainment, ice cream, baked goods. Late May - early Nov.

WATERFALLS

The Boone area offers many opportunities for waterfall viewing and waterfall hikes. Visit ExploreBoone.com and check out the waterfall listings on page 46 for complete information.



LARGEST SNOW TUBING PARK ON THE EAST COAST

Celebrating 60 Years!



LARGEST ZIPLINE COURSE
ON THE EAST COAST

Snow Tubing

Featuring 4 different areas to snow tube with over 30 lanes of fun!

- 3 Moving Carpet Lifts
- 100% Snowmaking
- Lighting on All Lanes
- Lanes are 400-1000 Ft Long



828.963.6561

Off Hwy 105
Between
Boone &
Banner Elk

NEW

WHITE WATER RAFTING
ADVENTURES FOR ALL AGES

Ziplining

- Over 4 Miles of Ziplines • 20 Cable Runs
- Height of Over 200 Feet Off the Ground • Open Year Round

White Water Rafting

Offering Fully Guided White Water Rafting Adventures On The Watauga and Nolichucky River



Reservations Recommended | HawksnestTubing.com | HawksnestZipline.com | HawksnestWhitewater.com

PARKS

BLUE RIDGE PARKWAY

(828) 298-0398, www.blueridgeparkway.org
America's most scenic drive, the 469-mile Blue Ridge Parkway stretches from Virginia to the Great Smoky Mtns National Park in southwest NC. The parkway was completed with the Linn Cove Viaduct, an engineering marvel that carries travelers across the slopes of Grandfather Mountain (near milepost 304).

BOONE GREENWAY

Clawson-Burnley Park: 355 Martin Luther King Jr. Street. Main Trailhead: 607 Deerfield Road.
Watauga Community Recreation Center: 231 Complex Drive. Greenway Skate Park: 201 Casey Lane.
Pedestrian and Biking Trail. Available for walking, jogging, biking and cross-country skiing. Picnic shelter. Open year round.

BOONE JAYCEE PARK

527 Oak Street, Boone.
Facilities include picnic shelter, playground and tot lot.

BROOKSHIRE PARK

250 Brookshire Road, Boone
Walking paths, picnic pavilions, and open fields for play.

ELK KNOB STATE PARK

(828) 297-7261
5564 Meat Camp Road, Todd, NC 28684
Easy to strenuous hiking trails, a picnic area, a visitor center, and backcountry camping.

GREENWAY SKATE PARK

201 Casey Lane, Boone
Town-owned skate park alongside the Boone Greenway trail system.

GREEN VALLEY PARK

3896 Big Hill Road, Todd
www.greenvalleypark.org
A multipurpose community park on the banks of the New River about 7 miles outside of Boone. The park offers a picnic shelter, playground equipment, multi-purpose playing fields, hiking trails and a canoe ramp as well as gorgeous views.

HOWARD'S KNOB PARK

604 Howards Knob Road, Boone, NC 28607
Overlooking Boone from 4,400'.
Overlooks, picnic shelter, picnic areas and trails.
Park closes at dusk. Open mid April - October.

JUNALUSKA PARK

135 Bear Trail, Boone
Picnic shelter, basketball court, playground equipment and restrooms.

ROCKY KNOB PARK

285 Mountain Bike Way, Boone
Check out Rocky Knob Park for mountain biking and hiking trails. The 185 acre park includes 8 miles of mountain biking trails, a bike skills area, an outdoor playground and a picnic pavilion.

VALLE CRUCIS COMMUNITY PARK

(828) 963-9239
2892 Broadstone Road, Banner Elk
Vallecrucispark.org
Beautiful community park in historic Valle Crucis. The park offers open play space, picnic pavilions, a playground, paved walking paths, and restrooms.
There is a \$5 suggested parking donation.

PERFORMING ARTS

APPALACHIAN SUMMER FESTIVAL

(828) 262-4046 • (800) 841-ARTS
www.appsummer.org
NC's premier multi-arts summer cultural festival, now in its 40th season, featuring the finest in music, dance, theater and the visual arts. Held on and around Appalachian State University campus every July.

APPALACHIAN THEATRE

(828) 865-3000
559 W. King Street, Boone, www.apptheatre.org
Come and experience an event at this 1938 landmark in downtown Boone.

CONCERTS AT THE JONES HOUSE

(828) 262-4576
604 W. King Street, Boone
www.joneshouse.org
Outdoor concerts on the lawn in the summer and indoor concerts year-round.

HORN IN THE WEST

(828) 264-2120
591 Horn in the West Drive, Boone, NC 28607
www.horninthewest.com
Since 1952, the historical outdoor drama of the Revolutionary War, has been performed in the Daniel Boone Amphitheater in Boone. Late June through early August, nightly except Monday, beginning at 8p.m. Reserved seating.

MOUNTAIN HOME MUSIC

(828) 264-8118
www.mountainhomemusic.com
Celebrating its 30th anniversary in 2024!
Honoring traditional Appalachian performers and artists.



**Indoor & Outdoor Sluices
Open Rain or Shine!**

LEARN MORE:
HIGHCOUNTRYGEMMINING.COM



SCAN CODE

SCHAEFER CENTER PRESENTS SERIES

(800) 841-ARTS

733 Rivers Street, Boone, NC

www.theschaefercenter.org

Performances by nationally and internationally renowned musicians, dancers and theatre companies.

Oct. through Mar. each academic year.

APP STATE DEPT. OF THEATRE AND DANCE

(828) 262-3028

(828) 262-3063

www.theatreanddance.appstate.edu

Spring and Fall semesters, the ASU Theatre

Department performs major productions, children's theater, one-act plays and dinner theatre.

APP STATE SCHOOL OF MUSIC

(828) 262-3020

music.appstate.edu

Over 100 recitals and concerts each year, most free to the public. Call for info or to receive an annual calendar.

WINTER ACTIVITIES

APPALACHIAN SKI MOUNTAIN

(800) 322-2373

940 Ski Mountain Road, Blowing Rock, NC 25605

www.appskimtn.com

Thirteen runs, including four terrain parks, and an outdoor skating rink. Home of the French-Swiss Ski College. Ski, Snowboard, and clothing rentals.

BEECH MOUNTAIN RESORT

(800) 438-2093

1007 Beech Mountain Parkway

Beech Mountain, NC 28604

www.skibeech.com

The highest ski area in eastern North America. 17 trails on the slopes, 3 terrain parks, and snow tubing lanes.

BEECH MOUNTAIN SLEDDING HILL

(800) 468-5506

403 Beech Mountain Parkway,

Beech Mountain, NC 28604

For children under 12 - Free!

HAWKSNEST SNOW TUBING

(800) 822-4295

2058 Skyland Drive, Seven Devils, NC 28604

www.hawksnesttubing.com

The largest snow tubing park in the Southeast offers up to 30 lanes of snow tubing.

SUGAR MOUNTAIN RESORT

(800) SUGAR-MT

1009 Sugar Mountain Drive, Banner Elk, NC 28604

www.skisugar.com

Highest vertical drop and longest run in NC. 20 ski and snowboard runs on the slopes, including a terrain park. Snow tubing lanes and an outdoor ice skating rink. ■

Whitewater **RAFTING** **CAVING** Expeditions New River **TUBING**

TUBING OUTPOST

4391 Castleford Rd, Boone

RAFTING & CAVING OUTPOST

3149 Tynecastle Hwy.
Banner Elk

828-898-9786

HighMountainExpeditions.com





The best in Homestyle Southern Comfort food. Honored by both *Southern Living Magazine* and *Our State Magazine* for our country cuisine.

**Family Style Restaurant
Catering Service
Banquet Facilities
Carryout Service**



Dan'l Boone Inn

*Call for More Information
& Seasonal Hours.*

130 Hardin St., Boone

828-264-8657

www.danlbooneinn.com



**Area's
Largest
Selection
of Old Time
Sodas & Craft your own
Mason Jar Float!**



**STOP BY &
GRAB A BITE!
MYSTERYHILL.COM**



FOOD & DRINK



From a network of passionate

local growers to the innovative culinary creators that call the Boone area home, great food is a key part of the High Country experience. Many area restaurants feature seasonally-rotating menus that highlight locally sourced ingredients, ensuring a uniquely delightful experience for every visit.

While the area has been nationally recognized for mouthwatering southern fare and intimate date-night locales, visitors will be delighted at the hidden gems of gastronomy waiting to be discovered. Whether you're seeking country cooking served family-style, vegetarian or vegan delights, authentic Mexican, or even elevated European cuisine, there is a wealth of dining options to fuel your next adventure in the Boone area.



AMERICAN

ARTISANAL

(828) 898-5395
1200 Dobbins Road, Banner Elk
www.artisanalinc.com

BEACON BUTCHER BAR, THE

(828) 865-0087
125 Graduate Lane, Boone
www.boonebeacon.com

BEST CELLAR

(828) 295-3466
203 Sunset Drive, Blowing Rock
www.ragged-gardens.com/blowing-rock-restaurant

BISTRO ROCA & ANTLERS BAR

(828) 295-4008
143 Wonderland Trail, Blowing Rock
www.bistroroca.com

BOONE SALOON

(828) 264-1811
489-B King Street, Boone
www.boonesaloon.com

CANTEEN

(828) 865-1110
1377 Blowing Rock Road, Boone
www.rhodesmotorlodge.com

CARDINAL, THE

(828) 355-9600
1711 NC Highway 105, Boone
www.thecardinalboone.com

CLEAN EATZ

(828) 386-4311
273 Boone Heights Drive, Boone
www.cleaneatz.com

COME BACK SHACK

(828) 264-2797
1521 Blowing Rock Road, Boone
comebackshack.com

COUNTRY RETREAT FAMILY BILLIARDS

(828) 963-6260
9021 NC Highway 105, Banner Elk

EARTH FARE

(828) 263-8138
178 W. King Street, Boone

EGG ROLLIN'

(828) 372-7007
278 Shoppes on the Parkway Road, Blowing Rock
www.eggrollin.biz

ELEVATION 3333

(828) 386-6000
208 Faculty Street, Boone
www.elevation3333.com

ELEVEN 80 EATERY

(828) 832-8088
1180 Blowing Rock Road, Boone
www.eleven80eatery.com

EVERYBODY'S BRUNCHEON CLUB

173 Howard Street, Boone
www.everybodysbruncheonclub.com

FAMOUS TOASTERY

(828) 264-0173
627 W King Street, Boone

F.A.R.M. CAFÉ

(828) 386-1000
617 West King Street, Boone
www.farmcafe.org

FIZZ ED

(828) 832-8102
260 Howard Street, Boone
www.fizzedboone.com

FOGGY ROCK EATERY & PUB

(828) 295-7262
8180 Valley Blvd., Blowing Rock
www.foggy-rock.com

GAMEKEEPER

(828) 963-7400
3005 Shull's Mill Road, Boone
www.gamekeeper-nc.com

GRANDVIEW RESTAURANT

(828) 963-4573
10575-1, Highway 105 S, Banner Elk
www.grandview-restaurant.com

HELLBENDER

(828) 295-3487
239 Sunset Drive, Blowing Rock
www.hellbender.bar

HOWARD STATION

(828) 865-1122
268 Howard Street, Boone
www.howardstation.com

LILY'S SNACK BAR

(828) 386-6411
455 Blowing Rock Road, Boone
www.lilyssnackbar.com

LOCAL, THE

(828) 266-2179
179 Howards Street, Boone
www.thelocalboone.com

MACADO'S

(828) 264-1375
539 West King Street, Boone

MELANIE'S FOOD FANTASY

(828) 263-0300
664 W. King Street, Boone
www.melaniesfoodfantasy.com

MIKE'S INLAND SEAFOOD

(828) 262-5605
174 Jefferson Road, Boone
www.mikesinlandseafood.com

NEW RIVER GRILL

(828) 355-9362
115 New Market Centre, Boone
www.newrivergrillboone.com

PEDALIN' PIG

(828) 355-9559 • 2968-A Highway 105, Boone
(828) 295-3651 • 8304 Valley Blvd, Blowing Rock
(828) 898-7500 • 4235 NC-105, Banner Elk
www.thepedalinpig.com

PEDDLER STEAK HOUSE

(828) 264-4433
1972 Blowing Rock Road, Boone
www.peddlerofboone.com

PEPPER'S RESTAURANT

(828) 262-1250
240 Shadowline Drive, Unit 4, Boone
www.peppers-restaurant.com

RED ONION CAFÉ

(828) 264-5470
227 Hardin Street, Boone
www.redonionboone.com

REIDS CAFÉ

(828) 268-9600
4004 NC-105 #8, Sugar Mountain
www.reidscafeandcatering.com

RESTAURANT AT GIDEON RIDGE INN

(828) 295-3644
202 Gideon Ridge Road, Blowing Rock
www.gideonridge.com

RIVER STREET ALE HOUSE

(828) 264-8100
957 Rivers Street, Boone
www.riverstreetalehouse.com

ROOTED ON KING

(828) 265-0377
659 West King Street, Boone
www.rootedonking.com

SOCIAL ON MAIN

(828) 414-9440
870 Main Street, Blowing Rock

SPECKLED TROUT, THE

(828) 295-9819
922 Main Street, Blowing Rock
www.thespeckledtrout.com

STORIE STREET GRILLE

(828) 295-7075
1167 Main Street, Blowing Rock
www.storiestreetgrille.com

SUNRISE GRILL

(828) 355-9079
1675 Highway 105, Boone
www.sunrisegrill.com

TABLE AT CRESTWOOD & DAWG STAR BAR, THE

(828) 963-6646
3236 Shulls Mill Road, Boone
www.crestwoodnc.com

TAPP ROOM

(828) 386-1216
421 Blowing Rock Road, Boone
www.tapproom.com

TIMBERLAKE'S RESTAURANT

(828) 295-5505
185 Chetola Lake Drive, Blowing Rock
www.chetola.com

TOWN TAVERN

(828) 295-7500
1182 S. Main Street, Blowing Rock
www.towntavernbr.com

TUCKERS CAFÉ

(828) 264-8510
1180 Blowing Rock Road, Boone Mall
www.tuckersboone.com

TWIGS

(828) 295-5050
7956 Valley Blvd., Blowing Rock
www.twigsbr.com

VALLE TAVERN AT MAST FARM INN

(828) 963-5857
2543 Broadstone Road, Valle Crucis
www.themastfarminn.com/mast-farm-inn-dining

VICIOUS BISCUIT

(828) 303-2290
702 Blowing Rock Road, Boone
www.viciousbiscuit.com

VIDALIA

(828) 263-9176
831 W. King Street, Boone
www.vidaliaofboonenc.com

WILD CRAFT EATERY

(828) 262-5000
506 W. King Street, Boone
www.thewildcrafteatery.com

WILDWOOD COMMUNITY MARKET

(828) 865-3030
182 Howard Street, Boone
www.wildwoodcommunitymarket.com

ASIAN

CHINA WOK

(828) 263-0588
205 New Market Center, Boone

COBO SUSHI BISTRO & BAR

(828) 386-1201
161 Howard Street, Suite B, Boone
www.cobosushi.com

HOKKAIDO JAPANESE RESTAURANT

(828) 263-0350
276 Watauga Village Drive, Boone

MAKOTO'S JAPANESE STEAKHOUSE

(828) 264-7976
2124 Blowing Rock Road, Boone
www.Makotos-Boone.com

MOON AT BLOWING ROCK, THE

(828) 414-9905
7179 Valley Blvd, Blowing Rock
www.themoonatblowingrock.com

OSAKA JAPANESE & CHINESE

(828) 262-0555
214 Southgate Plaza, Boone
osakaboone.com

SABEING BOONE KING

(828) 832-8189
454 W King Street, Boone
sabeingbooneking.business.site

TASTE GRILL

(828) 386-1170
240 Shadowline Drive, Boone
www.tastegrillboone.com

DINERS

BLUE RIDGE DINER

(828) 265-1999
5176 Old Highway 421 S, Boone

THOMPSON'S SEAFOOD

(828) 265-4300
5714 Old Highway 421 S, Boone

TROY'S 105 DINER

(828) 265-1344
1286 Highway 105, Boone
www.troys105diner.com

EUROPEAN/OTHER

AMBROSIA KAFÈNIÖ

(828) 355-9160
246 Wilson Drive, Boone
www.ambrosiakafe.com

CAFÉ VIOLETTE

(828) 414-9989
1132 Main Street #102; Blowing Rock
cafeviolettebr.com

COYOTE KITCHEN & LOST PROVINCE TAPROOM

(828) 265-4041
200 Southgate Drive, Boone
www.coyotekitchen.com

SIX PENCE PUB

(828) 295-3155
1121 Main Street, Blowing Rock
www.sixpencepub.com

INDIAN**MINT**

(828) 386-1441
203 Boone Heights Drive, Boone
www.mintnc.com

ITALIAN & PIZZA**BASIL'S FRESH PASTA AND DELI**

(828) 386-4066
246 Wilson Drive Suite K, Boone
www.basilsfasta.com

BELLA'S ITALIAN

(828) 386-6101
190 Boone Heights Drive, Boone
www.bellasboone.com

BOCCA BISTRO

(828) 355-9758
276 Watauga Village Drive, Boone
www.boccaitalianbistro.com

CAPONE'S PIZZA

(828) 265-1886
139 New Market Centre, Boone
www.caponesuntouchablepizza.com

CAROLINA PIZZA CO.

(828) 832-8018
454 W King Street, Suite B, Boone

CASA RUSTICA

(828) 262-5128
1348 Highway 105, Boone
www.casarustical1981.com

FABLED PIZZA & MYER'S KITCHEN & PANTRY

(828) 414-9737
8146 Valley Boulevard, Blowing Rock
www.fabledpizza.com

FARM TO FLAME (PIZZA)

At Appalachian Mtn Brewery
163 Boone Creek Drive, Boone
www.f2flame.com

LOST PROVINCE BREWING CO.

(828) 265-3506
130 N Depot Street, Boone
www.lostprovince.com

MEXICAN**ARROZ CON POLLO TAKE OUT GRILL**

(828) 386-1029 Take out only.
382 Watauga Village Drive, Boone
www.facebook.com/arrozconpollotakeoutgrill

BLACK CAT BURRITO

(828) 263-9511
127 Depot Street, Boone
www.blackcatburrito.com

DOS AMIGOS

(828) 265-1674
187 New Market Center, Boone

LOS ARCOIRIS MEXICAN

(828) 264-7770
168 Boone Heights Drive, Boone
www.losarcoiris.com

MEXICAN ROCK

(828) 818-0087
8180 Valley Boulevard, Blowing Rock

TAQUERIA EL PASO

(828) 264-6755
2693 Highway 105, Boone

TAQUERIA LA MONARCA

(828) 832-8001
2530 US Hwy 421, Boone

**SANDWICH SHOPS
& BAKERIES****BOONE BAGELRY**

(828) 262-5585
516 W. King Street, Boone
www.boonebagelry.com

CUPCRAZED CAFÉ

(828) 295-3769
146 Greenway Ct, Blowing Rock
www.thevillagecafe.org

HOLE LOTTA DOUGHNUTS

(828) 865-1221
494 W. King Street, Boone
www.holelottadoughnuts.com

PENNY PATH, THE

(828) 372-7020
278 Shoppes on the Parkway Road, Blowing Rock,

STICK BOY BREAD COMPANY

(828) 268-9900
345 Hardin Street, Boone
www.stickboybread.com

STICK BOY KITCHEN

(828) 265-4141
211 Boone Heights Drive, Boone
www.stickboybread.com

SOUTHERN & FAMILY STYLE**DAN'L BOONE INN RESTAURANT**

(828) 264-8657
130 Hardin Street, Boone
www.danlbooneinn.com

PROPER

(828) 865-5000
142 S. Water Street, Boone
www.propermeal.com

OVER YONDER

(828) 963-5857
3608 NC Highway 194, Valle Crucis
www.veryondernc.com

COFFEE & BEVERAGES**APPALACHIAN APOTHEKARY & TEA ROOM**

(828) 963-8327
10543 North Carolina 105, Banner Elk



FOOD & DRINK

BALD GUY BREW

Boone: 714 Old US 421 S. Boone
Blowing Rock: 1116 Main Street, Blowing Rock
www.baldguybrew.com

BIRDIES COFFEE & TREATS

(828) 457-5308
3737 US Highway 321S, Blowing Rock
www.birdies.coffee

ESPRESSO NEWS COFFEE SHOP

(828) 264-8850
267 Howard Street, Boone
www.espresso-news.com

LOCAL LION ESPRESSO BAR & HOMEMADE DONUTS

(828) 386-1120
791 Blowing Rock Road, Boone
www.local-lion.com

HATCHET COFFEE

150A Den Mac Drive, Boone
www.hatchetcoffee.com

HIGHER GROUNDS COFFEE SHOP

(828) 265-1114
201 New Market Center, Boone

JUICE BOONE

(828) 386-1510
240 Shadowline Drive, Suite AA8, Boone
www.juiceboone.com

KOVU'S COFFEE

869 Hwy 105 Extension, Suite 1; Boone
facebook.com/kovuscoffee

NOBLE KAVA

(828) 386-6244
114 Clement Street, Suite 106; Boone
www.noblekava.com

TALIA ESPRESSO

(828) 386-1919
444 W. King Street, Boone
www.taliaespresso.com

SWEETS & FROZEN TREATS

APPALACHIA COOKIE COMPANY

(828) 355-4448
208 Faculty Street, Boone
www.appcookieco.com

BLUE DEER COOKIES & ICE CREAM

352 West King Street, Boone
3551 US Highway 321 S, Blowing Rock
960 Main Street, Blowing Rock
www.bluedeercookies.com

J&J'S HAWAIIAN ICE

718 West King Street, Boone
www.facebook.com/hawaiianiceboonenc/

KILWINS

(828) 295-3088
1103 Main Street, Blowing Rock
278 Shoppes on the Parkway Road, Blowing Rock
www.kilwins.com

LITTLE WING ICE CREAM

216 Howard Street, Boone

MO'SWEETS

(828) 865-1120
276 Watauga Village Drive, Boone
www.mosweetsmotreats.com

VENTURE CHOCOLATE & WINE

(828) 265-1600
605 W. King Street, Boone
www.venturechocolateandwine.com

BREWERIES

APPALACHIAN MOUNTAIN BREWERY

(828) 263-1111
163 Boone Creek Drive, Boone
www.appalachianmountainbrewery.com

BEECH MOUNTAIN BREWING CO.

(828) 387-2011
1007 Beech Mtn Parkway, Beech Mtn.
www.beechmountainbrewingco.com

BLOWING ROCK ALE HOUSE

(828) 414-9600
152 Sunset Drive, Blowing Rock
www.blowingrockalehouse.com

BOONESHINE BREWING CO.

(828) 278-8006
465 Industrial Park Drive, Boone
www.booneshine.beer

KETTELL BEERWORKS

(828) 898-8677
567 Main Street E., Banner Elk
www.kettellbeerworks.com

LOST PROVINCE BREWING CO.

(828) 265-3506
130 N Depot Street, Boone
Lost Province at Hardin Creek
(828) 386-1328
289 Daniel Boone Drive, Boone
Lost Province Taproom at Coyote Kitchen
(828) 265-4041
200 Southgate Drive, Boone
www.lostprovince.com

SOUTHEND BREWING CO

(828) 865-0224
747 West King Street, Boone
www.southendbrewing.com

WINERIES

BANNER ELK WINERY

(828) 898-9090
60 Deer Run Lane, Banner Elk
www.bannerelkwinery.com

GRANDFATHER VINEYARD & WINERY

(828) 963-2400
225 Vineyard Lane, Banner Elk
www.grandfathervineyard.com

LINVILLE FALLS WINERY

(828) 765-1400
9557 Linville Falls Highway, Linville Falls
www.linvillefallswinery.com

NEARBY

OLD BARN WINERY

(828) 246-8494
2152 Beaver Creek School Road, West Jefferson, NC
www.oldbarnwinery.com

WATAUGA LAKE WINERY

(423) 768-0345
6952 Big Dry Run Road, Butler, TN 37640
www.wataugalakewinery.com ■


SHOPPING



Whether you're looking for outdoor gear to supply your next adventure or a handcrafted work of art to give to a loved one, the Boone area presents a range of opportunities for any shopper.

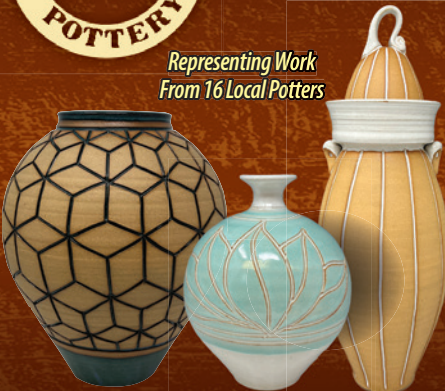
Step back in time as you traverse the creaky floorboards of a 19th-century general store, wander through endless galleries of one-of-a-kind works of art, or browse an independent bookstore with a freshly-brewed cup of joe. Maybe you're searching for a modern outlet mall—we've got that too. Local produce? Our farmers markets offer the finest selection of local meat and dairy, seasonal fruit and veg, quality crafts and unique finds.

All in all, a shopping spree in the High Country is a breeze with our variety of specialty shops, art and craft galleries, antique stores and so much more.



GALLERY & WORKING STUDIO

*Representing Work
From 16 Local Potters*



BOB MEIER artist

585 W. KING ST. BOONE, NC 28607
(828) 264-1127
doeridgepottery.com
meier@doeridgepottery.com



The Shoppes at Mystery Hill

*Shop for Unique Gifts,
Area Souvenirs & More!*

STOP & SHOP
MYSTERYHILL.COM



CRAFT GALLERIES

BOLICK & TRADITIONS POTTERY

(828) 295-6128
1155 Main Street, Blowing Rock
www.bolickandtraditionspottery.com

CAPOZZOLI GUITAR COMPANY

(828) 719-8068
207 Dale Adams Road, Sugar Grove
www.capozzolguitarcompany.com

DOE RIDGE POTTERY

(828) 264-1127
585 W. King Street, Suite D, Boone
www.doeridgepottery.com

ELLISON

718 West King Street, Boone
www.ellisonnc.com

HANDS GALLERY

(828) 262-1970
543 W. King Street, Downtown Boone
www.handsgallery.org

MOUNTAIN THREAD COMPANY

(828) 372-7024
1098 Main Street, Blowing Rock
www.themountainthreadcompany.com

SOUTHERN HIGHLANDS CRAFT GUILD

Inside Moses Cone Manor
(828) 295-7938
Milepost 294, Blue Ridge Parkway
southernhighlandguild.org/mosesconemanor

SHOPS, STORES
& MALLS**1ST TRACKS SKI SHOP**

(800) 728-8788
1380 Highway 105-S, Boone
www.1sttracks.com

641 RPM RECORDS

(828) 865-9641
743 W. King Street, Boone

828 FLIES

(828) 967-0257
133 Shelby Street, Seven Devils
www.239flies.com

ALUMNI HALL

(828) 386-1281
671 West King Street, Boone
www.alumnihall.com/appalachian-state-mountaineers

ANNA BANANA'S

(828) 865-2000
641 W. King Street, Boone

ANTIQUES ON HOWARD

(828) 262-1957
199 Howard Street, Boone
www.antiquesonhowardnc.com

APPALACHIAN TEES

(828) 265-1333
531 W. King Street, Boone

BE NATURAL MARKET

(828) 262-5592
273 Boone Heights Drive, Boone
www.benaturalmarket.com

BENCHMARK PROVISIONS BEER & WINE

(828) 386-1329
122 Depot Street, Boone
benchmarkprovisionsnc.com

BLUE'S BREWS

(828) 278-9243
362 W King Street, Boone

BOONE'S FLY SHOP

(828) 865-3474
140 S. Depot Street, Boone
www.boonesflyshop.com

BOONE MALL

(828) 264-7286
1180 Blowing Rock Road, Boone
www.boonencmall.com

CHEAP JOE'S ART STUFF

(800) 227-2788
374 Industrial Park Drive, Boone
www.cheapjoes.com

CORBETT'S PRODUCE

(828) 264-5788
7808 Old US 421 South, Deep Gap
www.shopcorbettsproduce.com

COMMON GOOD CO.

685 W. King Street, Boone
www.commongoodconc.com

CORNBREAD TACTICAL

(828) 386-1406
969 Rivers Street, Boone
www.cornbreadtactical.com

CURIOSITY CONSIGNMENT MEGA WAREHOUSE

(336) 684-0999
3100 NC Highway 105, Boone
www.curiositync.com

DEWOOLFSON STORES

(800) 833-3696 • Banner Elk
www.dewoolfsonlinens.com

DRAGON'S DEN

(828) 295-2698
643 Greenway Road, Suite O, Boone
www.dragonsdenboone.com

FOOTSLOGGERS

(828) 262-5111
139 Depot Street, Boone
(828) 295-4453
921 Main Street, Blowing Rock
www.footsloggers.com

FRED'S GENERAL MERCANTILE

(828) 387-4838
501 Beech Mountain Pkwy., Beech Mtn.
www.fredsgeneral.com

HIGH COUNTRY SOUVENIRS

(828) 964-3869
707 W. King Street, Boone

HIGHWAY ROBBERY

(828) 264-7604
607 W King Street, Boone

INCREDIBLE TOY COMPANY

(828) 264-1422

3411 Hwy. 321 South, Blowing Rock

www.incredibletoycompany.com**JERKY OUTPOST**

(828) 260-6221

2107 Broadstone Road, Banner Elk,

1132 Main Street, Blowing Rock

www.jerkyoutpost.net**J&M PRODUCE**

(828) 386-6303

117 Shore Drive, #9401, Blowing Rock

facebook.com/jandmproduce**KUDZU MUSIC**

(828) 264-4765

1542 US-421 C, Boone

www.kudzumusic.net**LA MONARCA TIENDA MEXICANA**

(828) 386-4125

1586-B U.S. Highway 421 S, Boone

facebook.com/lamonarca.tiendamexicana**LUCKY PENNY**

(828) 264-0302

693 West King Street, Boone

www.luckypennyboone.com**MAST GENERAL STORE - BOONE**

(828) 262-0000

630 W. King Street, Boone

www.mastgeneralstore.com**MAW'S PRODUCE**

(828) 963-8254

7918 Highway 105 S., Foscoe

MO'S BOOTS

(828) 265-2668

1586 US Highway 421 S., Boone

www.mosboots.com/new**MOUNTAIN RUNNING COMPANY**

(828) 386-1009

691 West King Street, Boone

www.mountainrunningcompany.com**MOUNTAINEER MANIA**

(828) 406-1992

497 W. King Street, Boone

www.mountaineermania.com**ORIGINAL MAST GENERAL STORE**

(828) 963-6511

3565 Highway 194 S., Sugar Grove

www.mastgeneralstore.com**PEABODY'S WINE & BEER MERCHANTS**

(828) 264-9476

1104 NC-105, Boone

www.peabodyswineandbeer.com**RECESS RIDE SHOP**

(828) 355-9013

1158 Highway 105, Boone

www.recessrideshop.com**REGEAR**

(828) 386-6100

967 Rivers Street, Boone

www.regearnc.com**RIVERCROSS MADE IN USA**

(828) 963-8623

3595 Highway 194 S., Valle Crucis, NC

www.rivercrossmadeinusa.com**SEW ORIGINAL**

(828) 264-1049

1542 Highway 421 S., Boone

www.seworiginal.com**SHOPPES AT FARMERS HARDWARE**

(828) 264-8801

661 W. King Street, Boone

www.shoppesatfarmers.com**TODD MERCANTILE**

(336) 877-5954

3899 Todd Railroad Grade Road, Todd, NC

www.thetoddmercantile.com**TSUGA**

699 George Wilson Rd, Boone

www.tsuga.us**VILLAGE JEWELERS**

(828) 264-6559

697 W. King Street, Boone

www.villagejewelersltd.com**WATSONNATTA WESTERN WORLD**

(828) 264-4540

711 W. King Street, Boone

www.booneboots.com**WAYPOINT OUTFITTERS**

(828) 865-1100

244 Shadowline Drive, Boone

www.waypointoutfittersboone.com**WILDWOOD COMMUNITY MARKET**

(828) 865-3030

182 Howard Street, Boone

www.wildwoodcommunitymarket.com

ANNUAL EVENTS

Please check our website for event changes and cancellations [exploreboone.com](https://www.exploreboone.com)

[ExploreBoone.com/things-to-do/events](https://www.exploreboone.com/things-to-do/events)



JANUARY

SKI AND SNOWBOARD RACES -
Boone area

BLOWING ROCK WINTERFEST

FEBRUARY

BOONE DOCS FILM FESTIVAL-
Appalachian Theatre

OLD-TIME FIDDLERS
CONVENTION - App State

MARCH

MARCH MADNESS - Low, low
rates on lift tickets

BANFF MOUNTAIN
FILM FESTIVAL - App State

MELTDOWN GAMES AT
APPALACHIAN SKI MOUNTAIN

APRIL

EGG-STRAVAGANZA -
Kid's Event. Downtown Boone

TROUT DERBY - Blowing Rock

TWEETSIE RAILROAD OPENS
MERLEFEST - Wilkesboro

JUNE

DAY OUT WITH THOMAS -
Tweetsie Railroad

THE CUB - 7-mile race

ANIMAL BIRTHDAY PARTY -
Grandfather Mountain Habitats

RHODODENDRON RAMBLE -
Grandfather Mountain

BLOOD, SWEAT AND GEARS -
Bicycle Ride

JULY

INDEPENDENCE DAY
CELEBRATIONS, PARADES
AND FIREWORKS -

Boone and Blowing Rock

GRANDFATHER MOUNTAIN
HIGHLAND GAMES -
Annual Scottish festival

SYMPHONY BY THE LAKE
AT CHETOLA

DOC AND ROSA LEE
WATSON MUSICFEST -
In Sugar Grove

AUGUST

BOONE GRAN FONDO

DOC WATSON DAY - The Jones
House, Annual Celebration of Doc
Watson's musical legacy

HIGH COUNTRY BEER FEST
High Country Fairgrounds

RIDERS IN THE SKY CONCERT -
Tweetsie Railroad

TRIPLE CROWN HALF MARATHON

SEPTEMBER

MILE HIGH KITE FESTIVAL

THE KNOB - Two miles of pure hill!

BLUE BEAR MUSIC FESTIVAL

AUTUMN AT OZ - Land of Oz at
Beech Mountain

HAWK WATCH -
Grandfather Mountain

OCTOBER

BOONE BOO - Halloween Event

TWEETSIE RAILROAD
GHOST TRAIN

WOOLLY WORM FESTIVAL -
Banner Elk

SUGAR MOUNTAIN RESORT'S
OKTOBERFEST

FALL COLOR RAMBLE -
Grandfather Mountain

VALLE COUNTRY FAIR - Valle Crucis

NOVEMBER

THANKSGIVING KILN OPENING
Bolick Pottery

TURKEY TROT 5K - Boone
Greenway Thanksgiving morning

BLOWING ROCK CHRISTMAS
PARADE & LIGHTING OF THE TOWN

DECEMBER

TWEETSIE CHRISTMAS

APPALACHIAN SKI MOUNTAIN
ANNIVERSARY WEEKEND

BOONE HOLIDAY PARADE
Downtown Boone

A CAROLINA SNOWBELLE
CHRISTMAS -
Appalachian Theatre

FESTIVE FIRST FRIDAY
& TREE LIGHTING -
Downtown Boone

SUGARFEST -
Ski and snowboard demos and
swag, live music, food

NEW YEAR'S EVE FIREWORKS -
At area ski resorts ■



DOWNTOWN BOONE FESTIVALS

JUNE

HIGH COUNTRY
JAZZ FESTIVAL

BOONERANG MUSIC
& ARTS FESTIVAL

JULY

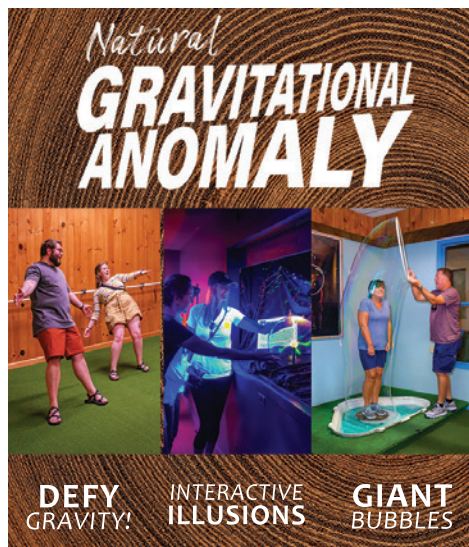
APPALACHIAN SUMMER
FESTIVAL

SEPTEMBER

ANTLERS & ACORNS
SONGWRITERS
FESTIVAL

OCTOBER

BUSKERS FEST



DEFY
GRAVITY!

INTERACTIVE
ILLUSIONS

GIANT
BUBBLES

EVENTS IN A SERIES

ART IN THE PARK - BLOWING ROCK

Once a month,
May-October

BLOWING ROCK CHARITY HORSE SHOW

Saddlebred in June,
Hunter/Jumper Division
in July and August

BEECH MOUNTAIN MUSIC SERIES

Summer and Winter
Programming

CONCERTS ON THE LAWN

Jones House -
downtown Boone. Free
concerts every Friday,
June - August

CHETOLA RESORT'S FESTIVAL OF LIGHTS

Thanksgiving weekend
through January

CRAZY CHRISTMAS AT MYSTERY HILL

Late November -
December

DOWNTOWN BOONE FIRST FRIDAY ART CRAWL

First Friday of the month
Monthly, except January

GRANDFATHER MOUNTAIN PROGRAMMING

Grandfather.com/event-
calendar

"HORN IN THE WEST" OUTDOOR DRAMA

Late June through
mid August.
Closed Mondays

KING STREET MARKET

May - October and
November - March

LIVE AT THE APPALACHIAN THEATRE

Year-round programming

MOUNTAIN HOME MUSIC SERIES

Various performances
throughout the year

MUSIC IN THE VALLE

Outdoor concert series
at Valle Crucis Park
from late May through
mid August

SCHAEFER CENTER PRESENTS

Performing arts series
November - April

WATAUGA COUNTY FARMERS MARKET

Saturdays, April -
November

LEARN MORE
MYSTERYHILL.COM



SCAN CODE

EXPLORE APPALACHIAN HERITAGE



TRAVEL BACK IN TIME
TO OLD APPALACHIA

WORLD'S 2ND LARGEST
PRIVATE COLLECTION

LEARN MORE
EXPERIENCEAPPALACHIA.ORG



SCAN CODE



BOONE FORK FALLS (HEBRON ROCKS)

This 25-foot fall is located at the Julian Price Park Picnic area at milepost 295 on the Blue Ridge Parkway near Blowing Rock. The Boone Fork Trail is a 5 mile loop but if you start at the picnic area going North, the falls are about 1.5 miles.

CRAB ORCHARD FALLS

A short but steep hike from the Valle Crucis Conference Center parking lot on Hwy 194 N in Valle Crucis.

ELK RIVER FALLS

It's an 85-foot waterfall near the town of Elk Park. Travel down 19E towards Tennessee, turn right on Old Mill Road, then left on Elk River Road. Travel several miles and the road dead-ends at the falls. A short, steep trail takes you to the base of the falls.

GLEN BURNIEY FALLS

The falls are in the town of Blowing Rock, just two blocks from Main Street. Laurel Lane parking area sits across from Broyhill Park. The trail descends steeply through John's River Gorge and is not recommended for beginners. Plan for an hour hike and the trip back will take considerably longer. Strenuous hike!

GREEN MOUNTAIN CREEK FALLS

A 20-foot tall waterfall is located just outside of Blowing Rock on the scenic "Little Parkway," US Highway 221. Park at the gravel pull-off just south of the waterfall and cross the road to see the falls close-up. Several more roadside waterfalls can be found sprinkled along this NC Scenic Byway, between the Linn Cove Viaduct on the Blue Ridge Parkway and downtown Blowing Rock.

LINVILLE FALLS

A series of two falls (upper is 12' and lower is 90') plunge into the 2,000-foot deep Linville Gorge. A one-mile round-trip hike leads to the upper falls and other trails lead to more views. ■

Airports Servicing the Boone Area:	
Charlotte Douglas (CLT)	2 Hours
Greensboro / Triad (GSO)	2 Hours
Tri-Cities, TN (TRI)	1.5 Hours
Asheville, NC (AVL)	2 Hours

Distances From Surrounding Cities		
CITY	DISTANCE	TIME
Charlotte, NC	102 miles	2 hours
Raleigh, NC	187 miles	3 hours
Greensboro, NC	114 miles	2 hours
Greenville, SC	158 miles	2.5 hours
Columbia, SC	185 miles	3 hours
Atlanta, GA	301 miles	5 hours
Roanoke, VA	185 miles	3 hours
Knoxville, TN	160 miles	3 hours
Washington D.C.	413 Miles	6.5 hours

Helpful Phone Numbers / Websites	
Appalachian State University	(828) 262-2000 AppState.edu
Appalachian State Athletics	(828) 262-2079 AppStateSports.com
Blue Ridge Parkway Road Closures	(828) 298-0398 nps.gov/blri/planyourvisit/roadclosures.htm
Boone Area Chamber of Commerce	(828) 264-2225 BooneChamber.com
Boone Weather and Road Conditions	BooneWeather.com WataugaOnline.com
High Country Host Visitor's Center	(828) 264-1299 HighCountryHost.com

FOGGY MOUNTAIN GEM MINING

Since 1989



Since 1989 we have been offering a great mining adventure for families and groups of all sizes and ages. Our knowledgeable staff provides a fun and educational experience. We offer buckets of the finest gem ore from the best gem mines in the world. Each bucket contains genuine rough gems.



We guarantee a gem find every time!

Just like miners from the old days you will sift through dirt and rock using either our indoor or outdoor water flumes to find treasures in the safety and comfort of our year round location. We will help you identify what stones you find and can cut and polish your gem finds and make them into attractive jewelry especially for you



Discover our two locations:
828-963-4367

2422 Hwy 321 South,
Boone, NC 28607

4416 NC-105,
Boone, NC 28607

Check Out Our Sister Company
BOONE LIFE Apparel & Merchandise





Explore Boone
331 Queen Street, Suite 101
Boone, NC 28607