

THE LURE OF CAPE COD

MASSACHUSETTS



Cape Cod Awaits You.

Walk our miles of pristine coastline, revel in our arts and culture, and reclaim childhood memories of seashells & sandcastles. See magnificent whales migrating just offshore and immerse yourself in world-class creative and recreational opportunities. Indulge in the freshest seafood, play 18 holes on our lush fairways, and savor our breathtaking scenic beauty.

Come to Cape Cod and let it capture your heart. Read on for a stunning journey around this Massachusetts peninsula.

For more engaging content and insider tips about Cape Cod, visit **CapeCodChamber.org** or download our digital ***Cape Cod Travel Guide*** at **CapeCodChamber.org/CapeCodTravelGuide**.

Funded, in part, by the Massachusetts Office of Travel & Tourism



Race Point Light in Provincetown,
Cover photo and Race Point photo by Paul Scharff

Upper Cape

Sandwich

History abounds in **Sandwich**, the oldest town on Cape Cod, from its historic Town Hall Square to the 1654 Dexter grist mill that still grinds corn at the edge of tranquil Shawme Pond. Sandwich's designated Glass Town Cultural District showcases an array of cultural and historical assets within walking distance of Sandwich center, including galleries, potters, glassblowers and museums. Historic Route 6A winds its way through town, featuring shops, restaurants and antiquing along the way.



A.

- A. Boardwalk in Sandwich; *photo by Greta Georgieva*
B. Mashpee Commons in Mashpee; *photo by Paul Scharff*
C. Sagamore Bridge in Bourne; *photo by Jon Miksis*
D. South Cape Beach in Mashpee; *photo by Greta Georgieva*



B.



C.

Mashpee

The town of **Mashpee** encompasses sandy beaches, freshwater ponds and enchanting woodlands. Mashpee was established as a reserve for the last remaining descendants of the Mashpee Wampanoag Tribe – the Native Americans who were the first Cape Codders, many centuries before the Pilgrims' arrival. Wampanoag culture and history still define much of the town's character today. Community events are held at the sidewalk-lined Mashpee Commons shopping outlet throughout the year.

Bourne

Known as the gateway to Cape Cod, the town of **Bourne** is bordered by the Cape Cod Canal and Buzzards Bay. Bike paths run along both sides of the Canal for roughly 8 miles between the Sagamore Bridge and Bourne Bridge, making it a popular spot for running, biking and fishing. Several small ponds, harbors and rivers dot the Bourne landscape. Much like other parts of the Cape, Bourne is filled with artisans who lend their talents to create artwork that highlights the region's beauty.



D.

A.



Falmouth

The picturesque town of **Falmouth** is well known for its beautiful beaches and crystal clear waters of Buzzards Bay and Vineyard Sound. Falmouth's eight distinctive villages are filled with character and charm, and the town is the closest mainland point to the island of Martha's Vineyard, located seven miles offshore. A quaint Main Street is lined with shops, bookstores, galleries and restaurants. The bustling village of Woods Hole is the world-renowned hub of oceanic scientific research.

A. Nobska Light in Falmouth; *photo by Paul Scharff*
 B. Shining Sea Bikeway in Falmouth; *photo by Greta Georgieva*
 C. Old Silver Beach in Falmouth; *photo by Jon Miksis*

B.



C.



Upper Cape



Beaches

- 1** FALMOUTH HEIGHTS BEACH, Grand Ave., Falmouth
- 2** MENAUAHANT BEACH, Menauhant Rd., Falmouth
- 3** MONUMENT BEACH, off Rte. 28, Bourne
- 4** OLD SILVER BEACH, Quaker Rd. & Rte. 28A, off Rte. 28A, Falmouth
- 5** SANDY NECK BEACH, off Rte. 6A, E. Sandwich
- 6** SCUSSET BEACH STATE RESERVATION, off Sagamore Rotary, Buzzards Bay
- 7** SOUTH CAPE BEACH, Great Neck Rd. S., Mashpee
- 8** SURF DRIVE BEACH, Surf Drive, Falmouth

Points of Interest

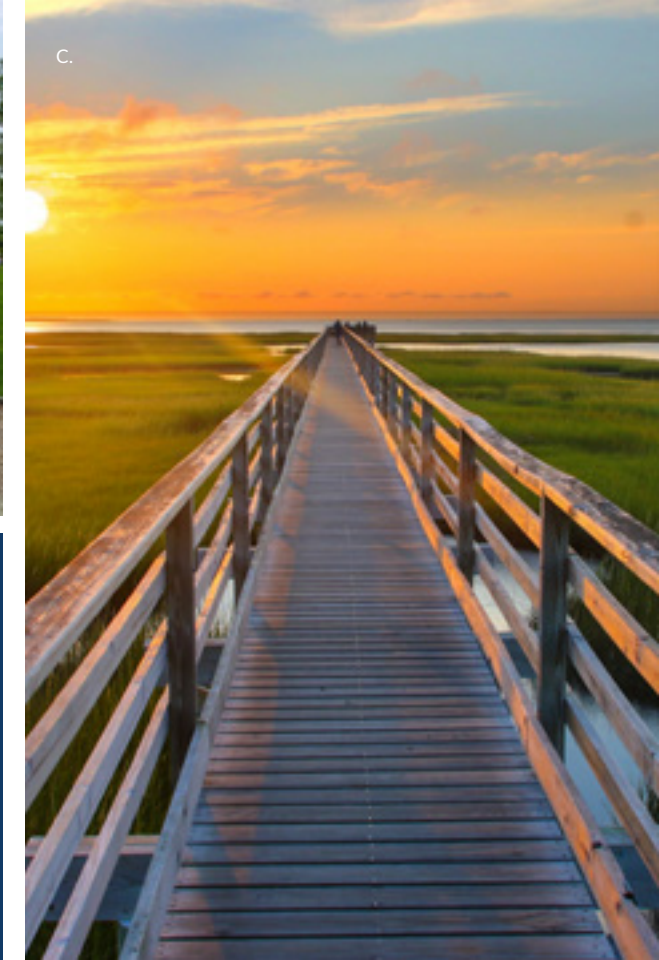
- 9** Aptuxcet Trading Post, Bourne
- 10** Cape Cod Canal & Canal Bike Paths, Bourne
- 11** Glass Town Cultural District, Sandwich
- 12** Heritage Museums & Gardens and Sandwich Glass Museum, Sandwich
- 13** Highfield Hall & Gardens, Falmouth
- 14** Mashpee Commons, Mashpee
- 15** Mashpee Wampanoag Indian Museum, Mashpee
- 16** Nobska Lighthouse, Falmouth
- 17** Shining Sea Bikeway, Falmouth to Woods Hole
- 18** Sandwich Boardwalk, Sandwich
- 19** Woods Hole Oceanographic Institution, Woods Hole

Mid Cape

Barnstable

Bordered by Cape Cod Bay and Nantucket Sound, **Barnstable** boasts seven charming villages, each with its own distinct persona. Hyannis is its largest village, and the commercial and transportation hub of Cape Cod—welcoming planes, trains, buses and Island ferries. The strollable Hyannis Main Street is a thriving downtown area rich in history, arts and culture. While Hyannis may be the most well-known of Barnstable's seven villages, the other six define the quintessential essence of Cape Cod life - their shady byways, beach roses, stalwart scrub pines and weathered shingles taken almost for granted by those who see them daily. Hyannis Port is renowned as the summer home of President John F. Kennedy and his family.

- A. Sandy Neck Light in Barnstable; *photo by Paul Scharff*
B. Hydrangea Fest in Yarmouth; *photo by Greta Georgieva*
C. Bass Hole Boardwalk in Yarmouth Port; *photo by Paul Scharff*
D. JFK Museum in Hyannis; *photo by Courtney Wittenstein*
E. Baxter's Wharf in Hyannis; *photo by Paul Scharff*



Yarmouth

One of the oldest towns on Cape Cod, **Yarmouth** enjoys shoreline on both Cape Cod Bay and Nantucket Sound and offers three distinctive villages rich in history. The village of Yarmouth Port is an attractive unspoiled area that runs along historic Route 6A, past former sea captain's homes, antique shops and galleries. The villages of West and South Yarmouth are more commercially settled, with the Route 28 side lined with hotels, motels, restaurants, souvenir shops and miniature golf courses. Yarmouth is home to several beaches, from cozy bay beaches to expansive, sandy beaches where windsurfing is a favorite activity.

Dennis

When you cross into **Dennis**, a more peaceful Cape Cod emerges. Stately sea captains' houses, rambling summer houses and artists' studios all comprise part of Dennis' charm. The quiet residential villages of Dennis and East Dennis run along Route 6A and Cape Cod Bay; West Dennis and Dennis Port lie to the south along Nantucket Sound. The town's commercial hub of South Dennis is central to each of these villages, with easy access to Routes 134 and 6. In Dennis Port, you will discover the "Olde Cape Cod" the late Patti Page made famous in her classic song - a village home to oceanfront dining and seaside motels. Dennis is known for its glorious beaches, many featuring calm, bayside waters.

A. Mayflower Beach in Dennis; *photo by Greta Georgieva*

B. Hydrangeas in Dennis; *photo by Greta Georgieva*

C. Bass River in Dennis; *photo by Paul Scharff*



Beaches

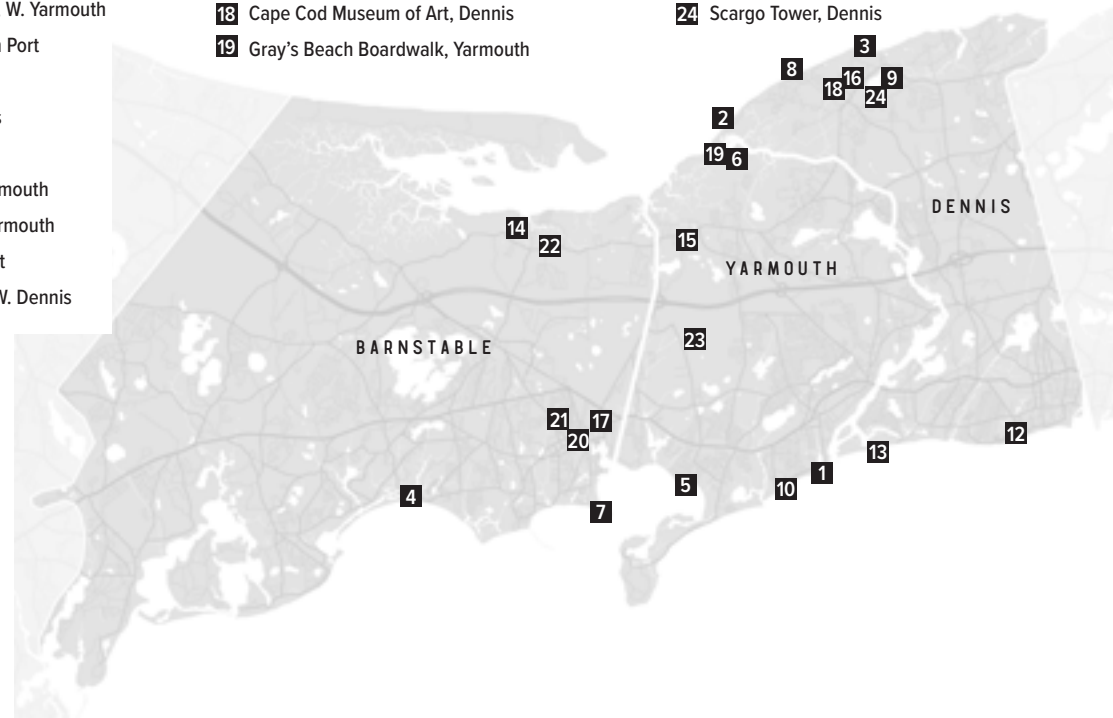
- 1** BASS RIVER BEACH, S. Shore Dr., S. Yarmouth
- 2** CHAPIN BEACH, Dr. Bottero Rd., Dennis
- 3** CORPORATION BEACH, Corporation Rd., Dennis
- 4** CRAIGVILLE BEACH, Craigville Rd., Centerville
- 5** ENGLEWOOD BEACH, end of Berry Ave., W. Yarmouth
- 6** GRAY'S BEACH, off Center St., Yarmouth Port
- 7** KALMUS BEACH, Gosnold St., Hyannis
- 8** MAYFLOWER BEACH, Dunes Rd., Dennis
- 9** SCARGO BEACH, Dr. Lord's Rd., Dennis
- 10** SEAVIEW BEACH, off S. Shore Dr., S. Yarmouth
- 11** SEA GULL BEACH, off S. Sea Ave., W. Yarmouth
- 12** SEA STREET BEACH, Sea St., Dennis Port
- 13** WEST DENNIS BEACH, Lighthouse Rd., W. Dennis

Mid Cape



Points of Interest

- 14** Barnstable Village Cultural District, Barnstable
- 15** The Captain's Mile, Yarmouth
- 16** The Cape Playhouse, Dennis
- 17** Cape Cod Maritime Museum, Barnstable
- 18** Cape Cod Museum of Art, Dennis
- 19** Gray's Beach Boardwalk, Yarmouth
- 20** Hyannis HyArts Cultural District, Barnstable
- 21** John F. Kennedy Hyannis Museum, Barnstable
- 22** Old King's Highway Historic District
- 23** Start of the Cape Cod Rail Trail, Yarmouth
- 24** Scargo Tower, Dennis



Lower Cape

Orleans

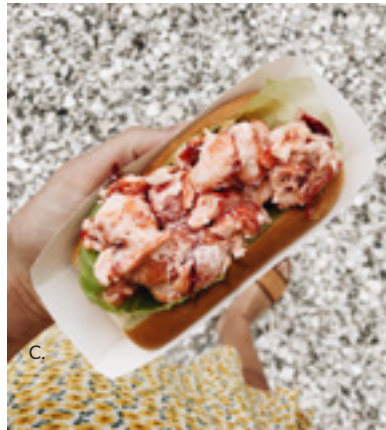
As the year-round commercial hub for most of the Outer Cape, **Orleans** lies just as the Cape begins its northwestern jog towards Provincetown. The Cape's landscape begins a dramatic metamorphosis from here outward. Thick woods become scanty then disappear, the sky seems to open up, and sand dunes and windswept moors are revealed. Orleans is nestled between spectacular Nauset Beach on the Atlantic and tranquil Skaket Beach on Cape Cod Bay. The Orleans village center is a charming and relaxed downtown, great for shopping, gallery hopping and dining. The natural beauty of Orleans' shores and forests makes the town a perfect spot for a wide range of outdoor activities.



A.



B.



C.



D.

Brewster

Though the glory seafaring days of **Brewster** have long past, many of the historic sea captains' mansions and estates lining the town's section of Route 6A have been beautifully restored into bed & breakfasts, art galleries, craft studios and antique shops. Just off the main way, the herring still run upstream in spring to the 1660 Stony Brook Mill. Brewster's Nickerson State Park comprises 400 acres of trails, camping areas and freshwater ponds, along with eight miles of bike path that's connected to the Cape Cod Rail Trail.

Harwich

The town of **Harwich** lies along the waters of Nantucket Sound and reaches all the way east to beautiful Pleasant Bay. Harwich Port is the town's most charming spot, with artisan galleries, restaurants and boutique shops to explore. Harwich Center, which lies inland, is a quiet but quaint village. Shopping and services can also be found along the town's bustling thoroughfares on Routes 28 and 39. Harwich includes almost 11 miles of shoreline and five harbors, including the picture-perfect Wychmere, a favorite for photographers.



E.

- A. Rock Harbor in Orleans
B. Wychmere Harbor in Harwich Port; *photo by Paul Scharff*
C. Lobster Roll; *photo by Lauren Wells*
D. Kayaking in Orleans; *photo by Paul Scharff*
E. Linnell Landing Beach in Brewster; *photo by Paul Scharff*



A.



B.

Lower Cape



Beaches

- 1** BANK STREET BEACH, off Rte. 28, Harwich Port
- 2** BREAKWATER BEACH, off Rte. 6A, Brewster
- 3** COCKLE COVE BEACH, Cockle Cove Rd., S. Chatham
- 4** HARDINGS BEACH, off Rte. 28 and Barn Hill Rd., W. Chatham
- 5** LIGHTHOUSE BEACH, Shore Rd., Chatham; limited 30-minute parking; easily reachable by foot or bicycle from downtown
- 6** LONG POND, Mammon Dr. off Crowell's Bog Rd, off Rte. 124, Brewster
- 7** NAUSET BEACH, end of Main St., E. Orleans
- 8** PAINE'S CREEK, off Rte. 6A, Brewster
- 9** RED RIVER BEACH, Uncle Vennie's Rd., off Rte. 28, S. Harwich
- 10** RIDGEVALE BEACH, off Rte. 28, Chatham
- 11** SKAKET BEACH, Skaket Beach Rd., Orleans

Points of Interest

- 12** Atlantic White Shark Conservancy, Chatham
- 13** Brooks Academy Museum, Harwich
- 14** Chatham Fish Pier, Chatham
- 5** Chatham Light, Chatham
- 15** Cape Cod Museum of Natural History, Brewster
- 16** Cranberry Bogs along Bank Street, Harwich
- 17** Nickerson State Park, Brewster
- 18** Old Higgins Farm Windmill, Brewster
- 19** Orleans Cultural District, Orleans
- 20** Rock Harbor, Orleans
- 21** Wychmere Harbor, Harwich

Chatham

Chatham is a maritime wonderland of pristine beaches, wild barrier islands, tidal shoals, circular coves and miles of saltwater inlets. Chatham remains remarkably old-fashioned, despite a well-deserved reputation for shopping. Chic boutiques reside in quaint storefronts along its winding Main Street lined with historic inns, white-steeped churches, trendy eateries and art galleries. A visit to Chatham's busy commercial fishing pier reveals the thriving fishing village that co- exists with Chatham's stylish façades. Watch local fishermen unload their day's catch, as well as seals hoping to get a free meal.

A. Fish Pier in Chatham

B. Chatham Light in Chatham; *photo by Paul Scharff*

C. Harwich in autumn; *photo by Sveta Damiani*



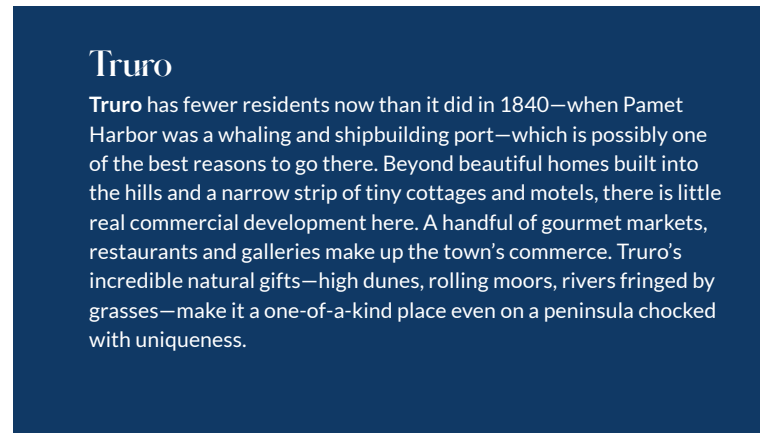
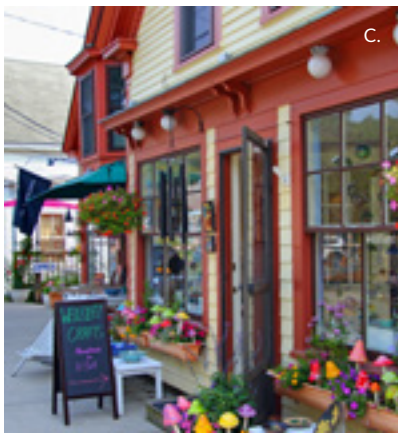
C.

Outer Cape

Wellfleet

The town of **Wellfleet** is an old whaling port, a contemporary fishing village and a cultural haven. The town, centered around its picturesque harbor, has remained remarkably unsullied and essentially non-commercial. Wellfleet's strollable downtown is lined with art galleries representing artists of both local and national acclaim. Bookstores and boutiques dwell within its historic residences and a community cultural center is housed in a restored historic church. Wellfleet celebrates a proud history as a seafaring town, and has long been recognized for its plentiful supply of shellfish, including the famous "Wellfleet Oyster."

- A. Marconi Beach in Wellfleet; *photo by Paul Scharff*
B. Nauset Light in Eastham; *photo by Paul Scharff*
C. Downtown Wellfleet; *photo by Paul Scharff*
D. Highland Links in Truro; *photo by Greta Georgieva*
E. Longnook Beach in Truro; *photo by Paul Scharff*



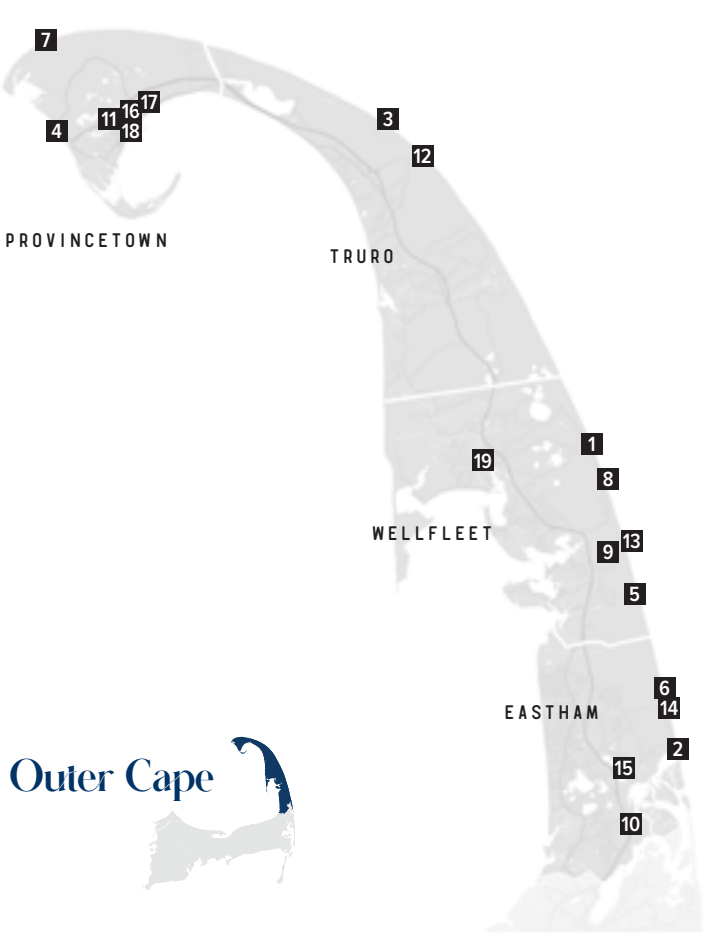
Eastham

The town of **Eastham** is often referred to as the gateway to the Cape Cod National Seashore, a 40-mile stretch of unspoiled sandy beach that encompasses majestic dunes, cedar swamp trails, marsh vistas and historic structures. Eastham is home to the Cape's oldest working historical windmill, which serves as the centerpiece to the town's Windmill Weekend tradition each fall. Throughout Eastham, you'll find art galleries, antiquing, gift shops and clothing boutiques, along with great restaurants and cozy cafes. The town is home to the iconic Nauset Light, listed on the National Register of Historic Places.

Provincetown

Provincetown embraces you, and then will not let you go. Perhaps this is the reason that people of all walks of life are so drawn to this stunning place surrounded by sea, sand and sky. This is the spot where the Pilgrims first landed in the New World in 1620; the 252-foot Pilgrim Monument commemorates that landing. A place known for celebrating individuality, Provincetown is a favorite vacation destination of the LGBTQ+ community, and has long inspired artists from all over the world. The town's vibrant Commercial Street boasts an eclectic mix of shops, boutiques, galleries, inns and restaurants. Located at the very tip of the Cape Cod peninsula, Provincetown is surrounded on three sides by water and 90% of it is contained within the Cape Cod National Seashore.

A. Pilgrim Monument in Provincetown; photo by Hawk Visuals
B. Commercial Street in Provincetown
C. Whale Watching off Provincetown



Beaches

- 1 CAHOON HOLLOW BEACH, Cahoon Hollow Rd. and Ocean View Dr., Wellfleet
- 2 COAST GUARD BEACH, off Doane Rd. and Ocean View Dr., Eastham; shuttle bus service from parking lot east of Salt Pond Visitor's Center
- 3 HEAD OF THE MEADOW BEACH, Head of the Meadow Rd., Truro
- 4 HERRING COVE BEACH, Province Lands Rd., Provincetown
- 5 MARCONI BEACH, Marconi Beach Rd., S. Wellfleet
- 6 NAUSET LIGHT BEACH, end of Cable Rd. and Ocean View Dr., Eastham
- 7 RACE POINT BEACH, Race Point Rd., Provincetown
- 8 WHITE CREST BEACH, off Cahoon Hollow and Ocean View Dr., Wellfleet

Points of Interest

- 9 Atlantic White Cedar Swamp Trail, Wellfleet
- 10 Captain Penniman House, Eastham
- 11 Center for Coastal Studies, Provincetown
- 12 Highland Lighthouse, Truro
- 13 Marconi Wireless Station Site, Wellfleet
- 14 Nauset Lighthouse, Eastham
- 15 National Seashore's Salt Pond Visitor Center, Eastham
- 16 Pilgrim Monument and Provincetown Museum, Provincetown
- 17 Provincetown Art Association and Museum, Provincetown
- 18 Provincetown Cultural District, Provincetown
- 19 Wellfleet Cultural District, Wellfleet

A two-story vacation home with a stone patio and outdoor furniture. The house has a mix of stone and wood siding. The patio is paved with large, light-colored stones. There are several wicker lounge chairs with blue and white patterned cushions, a wooden coffee table, and a grill. The background shows green trees and a clear blue sky.

The most important part
of renting your vacation home
is **caring for your vacation home.**

508.257.7166 | www.thisisdelmar.com | myvacationhome@thisisdelmar.com

DEL/MAR
VACATION RENTALS