



ROADMAP TO RECOVERY

A Phased Approach to Reopening Safely

Barbara Ferrer, PhD, MEd



COUNTY OF LOS ANGELES
Public Health



COUNTY OF LOS ANGELES
Public Health

TABLE OF CONTENTS

- I. Recovery Safeguards
- II. Recovery Process
- III. Stages for Reopening
- IV. Reopening Guidelines
- V. Recovery Metrics



SAFEGUARDS IN PLACE BEFORE OPENING



Ensuring health care system capacity:

- Adequate health care staffing, testing, ventilators and PPE, along with surge capacity



Protecting vulnerable populations:

- Adequate PPE and staffing to manage effective care and positive cases in institutional settings
- Adequate COVID-19 testing for residents and workers in institutional settings



Ensuring public health capacity to test, trace and isolate:

- Adequate capacity to test those in priority groups and those in congregate living and healthcare facilities
- Capacity to trace and isolate individuals with positive COVID-19 tests and to quarantine close contacts
- Collect data electronically from providers and labs, including race/ethnicity data

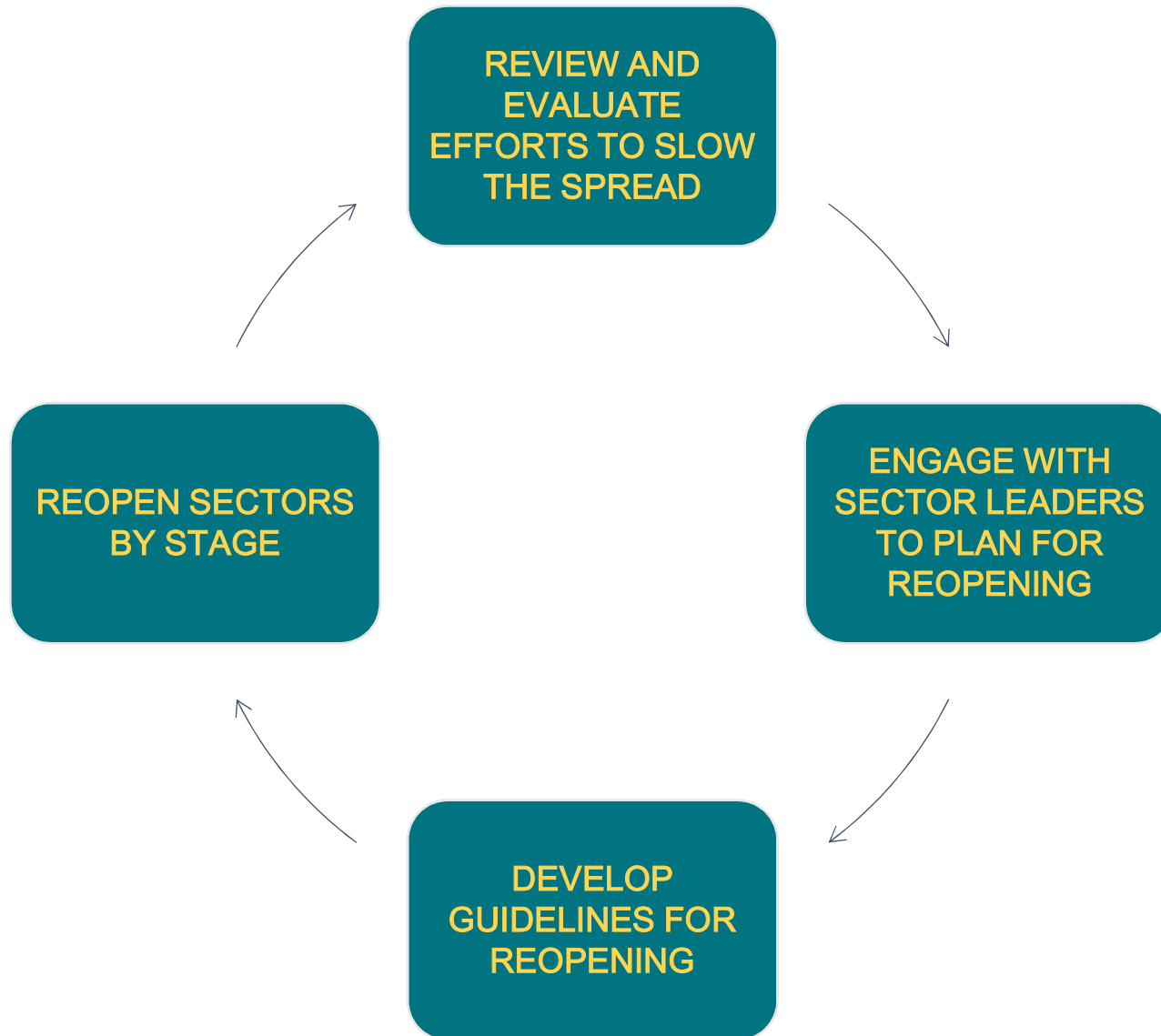


Developing protocols to keep workers and residents safe:

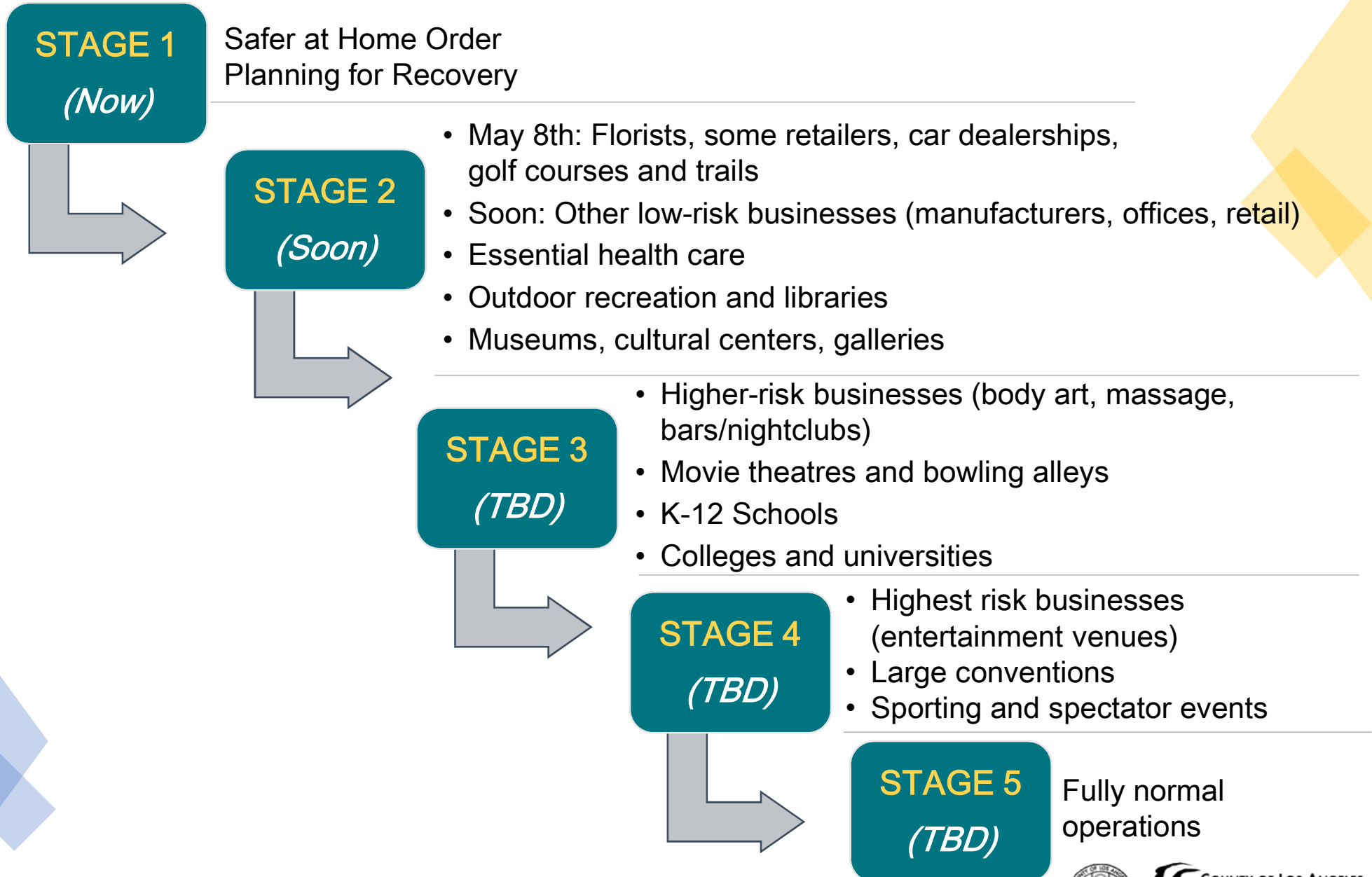
- Protocols in place to ensure safe reopening of businesses and institutions, including attention to physical distancing and infection control measures



PROCESS FOR STAGED REOPENING



FIVE-STAGE REOPENING PROCESS BASED ON RISK



MAY 8TH REOPENING

A limited number of businesses will be able to open on May 8th with appropriate safeguards in place

Florists, Toy Stores, Book Stores, Clothing Stores, Music Stores, and Sporting Goods Stores

- Curbside pick-up only
- Must adhere to physical distancing and infection control protocols

Car dealership showrooms

- Must adhere to physical distancing and infection control protocols

Golf courses

- Pro shops closed
- Concession stands and restaurants are take-out only
- Must adhere to physical distancing and infection control protocols

Trails

- Must adhere to physical distancing
- Must use cloth face covering



PLANNING FOR SAFE REOPENING

Each sector will have a safe reopening guidelines that addresses the following areas of concern:

Protecting and supporting worker health and safety

- Limit in-person work and ensure that vulnerable workers have alternative assignments
- Supply and require use of face coverings and personal protective equipment
- Develop policies that enable employees to stay at home when they are sick

Ensuring appropriate physical distancing

- Limit occupancy in accordance with Safe Reopening protocols
- Ensure 6-foot distance between individuals as much as possible
- Manage employees' schedules to enable physical distancing

Ensuring proper infection control

- Follow strict cleaning and sanitation standards
- Frequently clean high-touch surfaces

Communicating with the public

- Post clear signage to communicate protocols to visitors

Ensuring equitable access to services for vulnerable populations

- Prioritize access to critical services
- Move transactions and services online as feasible



ARE WE SLOWING THE SPREAD?

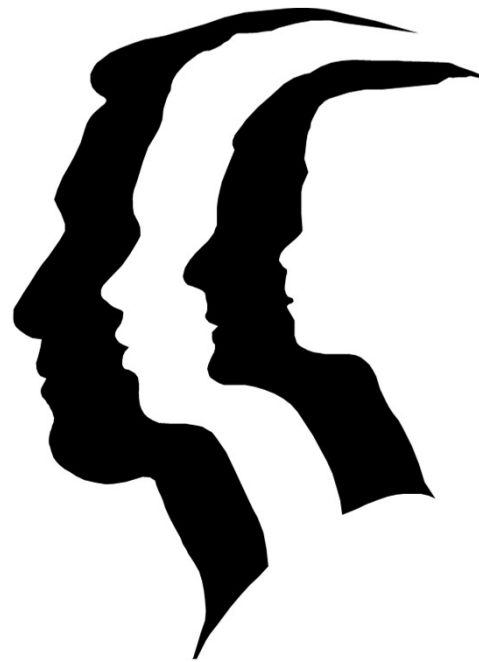
How capable are we of slowing the spread?

- Do we have sufficient hospital capacity, including ventilators and ICU beds?
- Is the supply of PPE adequate for all health care workers?
- Do we have sufficient testing capacity and testing supplies?
- Do we have sufficient case and contact tracing capacity?

How effective are we in slowing the spread?

- Are mortality rates by age, poverty status, and race/ethnicity relatively stable?
- Are hospitalization rates by age, poverty status, and race/ethnicity relatively stable?
- Do all high-risk populations have adequate access to testing?





THANK YOU

