



CHARLESTON COUNTY PARK  
& RECREATION COMMISSION

**COMMISSIONERS:**

Brad Taggart, Chair

Michelle Brandt, Vice Chair

Leslie Skardon, Secretary-Treasurer

Eduardo Curry

Lisa King

Mattese Lecque

Merriweather Mulé

Kevin Bowie, Executive Director

# Commission Agenda

**Commission Regular Meeting**

**Monday, December 10, 2025**

**CCPRC Headquarters at 5:30 PM and  
online at [charlestoncountyparks.com](http://charlestoncountyparks.com)**

**Charleston County Park and Recreation Commission  
Regular Commission Meeting  
861 Riverland Drive, Charleston, SC, 29412  
Online at [www.charlestoncountyparks.com](http://www.charlestoncountyparks.com)  
Monday, December 8, 2025 at 5:30 pm**

**Agenda**

- |   |                       |
|---|-----------------------|
| <b>1. Call to Order &amp; Welcome</b>   | <b>Taggart</b>        |
| Introduction of Guests and Notification to Media  |                       |
| <b>2. Public Comments</b>   | <b>Taggart</b>        |
| <b>3. Presentations</b>   | <b>Taggart/Bowie</b>  |
| <b>4. (ACTION) Approval of November 10, 2025 Regular Commission Meeting Minutes</b>                   | <b>Taggart</b>        |
| <b>5. Audit Report</b>  | <b>McManus</b>        |
| <b>6. (ACTION) Request for Public Hearin on Bond Issuance</b>   | <b>Bowie/McManus</b>  |
| <b>7. (ACTION) Reimbursement Resolution</b>   | <b>Bowie/McManus</b>  |
| <b>8. (ACTION) Acquisition of Awendaw Property</b>  | <b>Bowie/Newshutz</b> |
| <b>9. (ACTION) Riverland Drive Easement Request for a Multi-use Path</b>                              | <b>Bowie/Newshutz</b> |
| <b>10. Planning and Development Update</b>  | <b>Newshutz</b>       |
| <b>11. Financial Services Update</b>  | <b>McManus</b>        |
| <b>12. (ACTION) Award Contract – Kiawah Beachwalker Park (BWP)<br/>Boardwalk Replacement</b>          | <b>McManus</b>        |
| <b>13. Next Meeting &amp; Announcements</b>   | <b>Taggart/Bowie</b>  |
| Regular Commission Meeting:<br>Monday, January 12, 2026, 5:30pm at CCPRC Headquarters, Charleston, SC |                       |

**Unapproved Minutes**  
**Charleston County Park & Recreation Commission (CCPRC)**  
**Regular Commission Meeting**  
**861 Riverland Drive, Charleston, SC, 29412**  
**Monday, November 10, 2025 at 5:30 pm**

**Commission Members Present:** Brad Taggart, Leslie Skardon, Amy Adams, Garrett Lacy, Lisa King ,  
Mattese Lecque and Merriweather Mulé (via teleconference).

**Staff Present:** Kevin Bowie, Phil Macchia, Charlie McManus, Gina Ellis-Strother, Steve Hutton,  
Christine Volousky, Eric Stewart, Mark Madden, Melissa Muse, Patty Newshutz, Renee  
Dickinson, Tommy H., and Shanté Ellis.

**Legal Counsel Present:** Dwayne Green (via teleconference).

**Guests Present:** Michelle Brandt & Family

**1. Call to Order and Welcome**

Introduction of Guests and Notification to Media

The Charleston County Park & Recreation Commission met on Monday, November 10, 2025 at CCPRC's Headquarters, Charleston, SC and virtually via [www.charlestoncountyparks.com](http://www.charlestoncountyparks.com). Commission Chair, Brad Taggart, called the meeting to order and welcomed those in attendance. In compliance with the Freedom of Information Act, notice of meetings and agendas were posted and furnished to news media and persons requesting notification.

**2. Public Comments**

None.

**3. Presentations**

Mr. Taggart and Mr. Bowie acknowledged and congratulated Ms. Skardon's win in the recent Charleston City Council race. Mr. Taggart and Mr. Bowie recognized Ms. Brandt for her accomplishments while Commissioner and presented her with a service gratitude plaque.

**4. (Action) Approval of October 13, 2025 Regular Commission Meeting Minutes**

Motion to approve the minutes of the October 13, 2025 Regular Commission Meeting was made by Commissioner Lecque and approved by the Commission. (#023-2526)

**5. Planning and Development Update**

Planning & Development Director, Patty Newshutz, reviewed the campground feasibility study and progress staff are making related to their assigned Capital Improvement Projects, project solicitations, and potential land acquisitions. Mr. Bowie noted that the feasibility study will assist the Commission as they deliberate the potential of a Bond Resolution and start the public hearing process. Commission gave Mr. Bowie approval to continue towards the resolution.

**6. Financial Services Update**

Chief Financial Officer, Charlie McManus, presented and reviewed the checks over \$7,500 and financial reports for the month of September.

**7. (Action) Contract Approval – Consultant Services for Natural Resource Management**

Motion to enter into a contract with Sabine & Waters, Inc. for Consultant Services for Natural Resource Management, for a base year with four additional one-year options was made by Commissioner Adams and approved by the Commission. (#024-2526)

**8. (Action) Contract Approval – Riverland Terrace Boat Landing Improvements**

Motion to enter into a contract with R. L. Morrison and Sons, Inc., for Riverland Terrace Boat Landing Improvements in the amount of \$235,128 with funds coming from the approved CIP budget was made by Commissioner Skardon and approved by the Commission. (#025-2526)

**9. (Action) Contract Approval – James Island County Park (JICP) Cottage Door Replacement**

Motion to approve the cottage exterior doors replacement at James Island County Park (JICP) by Marsh Point Developers, in the amount of \$68,362, with funds coming from the approved General Agency budget was made by Commissioner Lacy and approved by the Commission. (#026-2526)

**10. Executive Session: Contractual/Legal Matters**

Motion to move to Executive Session to discuss a potential legal matter involving a contract was made by Commissioner King and approved by the Commission. (#027-2526)

**11. Post Executive Session:**

Upon returning from Executive Session, Commissioner Taggart stated that no action was taken.

Motion to direct the Executive Director to work with the City of North Charleston, County of Charleston, and community stakeholders on the redevelopment of the Ashley River Site to include a public park and recreation amenities with public park and recreation amenities with public access to the Ashley River and potential mixed-use development consistent with brownfield redevelopment and public use and to provide the Commission periodic updates on the progress was made by Commissioner Lecque and approved by the Commission. (#028-2526)

**12. Next Meeting**

Ms. King invited the Commission to attend the Foundation Holiday Drop In on December 4 at the Wappoo Shelter. RSVP by December 1.

Mr. Bowie and Mr. Macchia asked the Commission to review the Annual Report that was distributed during the meeting and to call them with any questions they may have.

Regular Commission Meeting, Monday, December 8, 2025, 5:30pm at CCPRC Headquarters, Charleston, SC

There being no further business, the meeting adjourned at 6:28 pm.

Respectfully submitted,

---

Brad Taggart, Commission Chair

---

Shanté Ellis, Executive Administrative Associate

October 2025 Checks over \$7,500

Date	Check #	Vendor	Description	Amount
<b>General Agency</b>				
10/02/25	3051520	Baker Roofing	JICP Emergency Flat Roof Repair	\$ 16,505.45
10/02/25	3051523	DCG Solutions, LLC	JICP Repair And Paint Park Center Ceilings	\$ 8,893.00
10/02/25	3051531	Johnson, Laschober & Associates	Splash Island ADA Parking	\$ 9,496.40
10/02/25	3051539	Power Tool Company	Scag Windstorm Blower For OTCCP	\$ 11,479.00
10/09/25	3051591	Pflug Law Firm, LLC	September Legal Fees	\$ 31,630.00
10/14/25	3051609	Club Car, LLC	Club Car Carryall 300, Gasoline - JICP	\$ 12,077.32
10/14/25	3051611	Deere & Company	JD 1550 Mower W/Out Mower Deck - JICP	\$ 23,618.74
10/14/25	3051616	J. R. Rowell Printing	McLeod Map - 40,000 Brochures Printed	\$ 8,038.75
10/14/25	3051622	Motorola, Inc	2 APX 4000 Radios	\$ 18,704.67
10/14/25	3051624	Pardee Heating & Air	MPP - Police Department, New HVAC Unit	\$ 9,441.00
10/16/25	3051642	J Evans Services, LLC	Willow Oak Entrance Improvements	\$ 10,165.00
10/16/25	3051659	Service Experts Heating & Air Conditioning, LLC	MPP - Gift Shop HVAC Replacement	\$ 8,285.00
10/22/25	3051710	Charleston County	Radio User Fees	\$ 34,932.00
10/22/25	3051731	SHI International Corp	Annual 0365 Renewal State Contract	\$ 94,878.27
10/22/25	3051732	Southern Dock Products	3 Garage Doors To Be Replaced at WCP Mx Building	\$ 11,600.00
10/23/25	3051744	Carahsoft Technology	ServiceNow General Consulting Services	\$ 21,505.00
10/23/25	3051751	Marcotec, LLC	HFOL Train, Final Payment	\$ 49,886.50
10/23/25	3051756	Tencarva Machinery Co, LLC	Two Filter Pumps for Splash Zone	\$ 92,864.96
10/29/25	3051760	Placer Labs, Inc	Placer.Ai Platform Renewal	\$ 53,791.50
10/30/25	3051764	Altec Industries, Inc	Replacement Bucket Truck	\$ 209,462.00
10/30/25	3051792	Onsite Wastewater Services	Septic Repair at CCIC	\$ 19,350.00

<b>Capital Improvement Projects</b>				
10/02/25	49	McMillan, Pazdan, Smith, LLC	CRCP-002 Restroom Pavilion, Design	\$ 16,425.00
10/16/25	50	Johnson, Laschober & Associates	CRCP-001 Construction Admin Consulting Services	\$ 40,920.00
10/16/25	53	Stantec Consulting Services, Inc	OTCCP-001 Park Master Plan, Design	\$ 24,993.69
10/30/25	54	Medpro Systems, LLC	OTCCP-001 Phase 1 Development, Construction	\$ 318,852.52
10/02/25	186	Medpro Systems, LLC	OTCCP-001 Phase 1 Development, Construction	\$ 435,509.05
10/02/25	187	Stantec Consulting Services, LLC	OTCCP-001 Park Master Plan, Design	\$ 62,967.04
10/02/25	484	GEL Engineering, LLC	JICP-007 Edisto Hall Building Repairs, Design	\$ 13,098.50
10/09/25	488	Carolina Recreation	PARD-005 Lincolnvilve Playground Improvements	\$ 23,789.32
10/09/25	489	DCG Solutions, LLC	PRC-003 Waterpark Electrical Controls, Construction	\$ 30,609.00
10/16/25	490	Jon Guerry Taylor & Associates, LLC	BOAT-007 Riverland Terrace Improvements, Design	\$ 13,000.00
10/16/25	492	Taylor Construction	JICP-007 Edisto Hall Building Repairs, Construction	\$ 68,150.70
10/23/25	493	Design Workshop, Inc	JICP-001 Master Plan, Design	\$ 22,875.00
10/23/25	494	GEL Engineering, LLC	JICP-007 Edisto Hall Building Repairs, Design	\$ 12,199.37

**Combined General Agency Operations**  
**October, 2025**

<b>Combined Revenues</b>	<b>Prior YTD Actuals</b>	<b>Year To date Actuals</b>	<b>Current Year Budget</b>	<b>% of Budget</b>
Support Services	1,116,321	1,028,772	23,930,459	4%
Park Services	6,442,788	6,261,226	22,072,263	28%
Recreation Services	765,735	703,672	1,845,294	38%
<b>Total Revenue</b>	<b>8,324,844</b>	<b>7,993,670</b>	<b>47,848,016</b>	<b>17%</b>
<b>Combined Expenses</b>				
Support Services	4,332,378	4,674,645	13,217,578	35%
Park Services	8,252,139	8,816,419	27,815,442	32%
Recreation Services	1,833,165	1,969,385	6,165,642	32%
<b>Total Expenses</b>	<b>14,417,682</b>	<b>15,460,449</b>	<b>47,198,662</b>	<b>33%</b>
<b>Net Operating Income</b>	<b>(6,092,838)</b>	<b>(7,466,779)</b>	<b>649,354</b>	
<b>Transfers In</b>	22,730	36,406	280,647	13%
<b>Transfers Out</b>	-	-	4,500,000	0%
<b>Change in Fund Balance</b>	<b>(6,070,108)</b>	<b>(7,430,373)</b>	<b>(3,569,999)</b>	
<b>Fund Balance Statement</b>				
Change in Fund Balance	(6,070,108)	(7,430,373)	(3,569,999)	
Fund Balance- Beginning of Year	28,163,941	28,672,553	28,672,553	
<b>Ending Fund Balance</b>	<b>22,093,833</b>	<b>21,242,180</b>	<b>25,102,554</b>	

**Support Services**  
**October, 2025**

Revenues	Prior YTD Actuals	Year To date Actuals	Current Year Budget	% of Budget
Administration Millage	569,058	566,551	22,403,831	3%
Administration- Other	547,263	462,221	1,526,628	30%
<b>Total Revenue</b>	<b>1,116,321</b>	<b>1,028,772</b>	<b>23,930,459</b>	<b>4%</b>
<b>Expenses</b>				
Administration	1,079,480	1,066,159	1,672,950	64%
Executive	655,717	694,712	1,980,163	35%
Financial Services	311,012	318,649	1,051,673	30%
Human Resources	316,585	311,193	1,329,223	23%
Information Technology	775,135	1,084,855	2,763,327	39%
Marketing	434,780	399,515	1,504,694	27%
Park and Program Services	195,926	197,551	679,420	29%
Planning and Development	409,119	456,503	1,660,851	27%
Safety	154,624	145,508	575,277	25%
<b>Total Expenses</b>	<b>4,332,378</b>	<b>4,674,645</b>	<b>13,217,578</b>	<b>35%</b>
<b>Net Operating Income</b>	<b>(3,216,057)</b>	<b>(3,645,873)</b>	<b>10,712,881</b>	
<b>Transfers In</b>	22,730	36,406	280,647	13%
<b>Transfers Out</b>	0	0	4,500,000	0%
<b>Change in Fund Balance</b>	<b>(3,193,327)</b>	<b>(3,609,467)</b>	<b>6,493,528</b>	

**Park Services  
October, 2025**

Revenues	Prior YTD Actuals	Year To date Actuals	Current Year Budget	% of Budget
Administration	14,528	11,420	37,084	31%
Caw Caw Interpretive Center	14,331	20,835	73,398	28%
Cooper River Marina	334,040	346,316	1,179,315	29%
Folly Beach County Park	388,212	390,025	1,066,887	37%
Folly Beach Fishing Pier	633,394	653,348	1,862,624	35%
Isle of Palms County Park	502,086	524,962	1,361,557	39%
James Island County Park	1,387,981	1,353,420	8,253,161	16%
Johns Island County Park	54,892	31,220	268,974	12%
Kiawah Beachwalker Park	209,476	201,169	610,883	33%
Lake House at Bulow	77,016	62,250	183,667	34%
Laurel Hill Plantation	4,710	2,590	6,353	41%
McLeod Plantation	204,720	193,894	666,933	29%
Mount Pleasant Palmetto Islands County Park	269,210	263,980	818,621	32%
Mount Pleasant Pier	191,301	182,735	511,380	36%
North Charleston Wannamaker County Park	2,109,274	1,972,804	4,941,965	40%
Old Towne Creek County Park	0	0	51,600	0%
SK8 Charleston	35,695	35,965	142,068	25%
Stono River Park	1,235	1,316	4,200	31%
West County Aquatics Center	10,687	12,977	31,593	41%
<b>Total Revenue</b>	<b>6,442,788</b>	<b>6,261,226</b>	<b>22,072,263</b>	<b>28%</b>
<b>Expenses</b>				
Administration	445,800	474,980	1,510,464	31%
Caw Caw Interpretive Center	131,882	172,205	616,922	28%
Cooper River Marina	247,646	192,181	713,400	27%
Folly Beach County Park	282,934	299,851	932,710	32%
Folly Beach Fishing Pier	547,706	488,662	1,561,603	31%
Isle of Palms County Park	384,673	347,433	1,228,772	28%
James Island County Park	1,935,851	2,193,760	6,854,293	32%
Johns Island County Park	174,025	157,701	856,089	18%
Kiawah Beachwalker Park	200,785	240,686	620,224	39%
Lake House at Bulow	38,247	38,358	155,106	25%
Laurel Hill Plantation	13,945	19,280	108,334	18%
McLeod Plantation	75,381	96,578	298,444	32%
Mount Pleasant Palmetto Islands County Park	470,277	494,864	1,630,737	30%
Mount Pleasant Pier	221,999	254,326	764,895	33%
North Charleston Wannamaker County Park	1,833,092	1,969,071	5,111,142	39%
Old Towne Creek County Park	74,508	34,133	387,554	9%
SK8 Charleston	151,320	126,365	472,724	27%
Stono River Park	16,725	11,699	23,285	50%
Undeveloped Properties & HQ Maintenance	872,427	1,117,381	3,610,789	31%
West County Aquatics Center	132,916	86,905	357,955	24%
<b>Total Expenses</b>	<b>8,252,139</b>	<b>8,816,419</b>	<b>27,815,442</b>	<b>32%</b>
<b>Change in Fund Balance</b>	<b>(1,809,351)</b>	<b>(2,555,193)</b>	<b>(5,743,179)</b>	

**Recreation Services  
October, 2025**

Revenue	Prior YTD Actuals	Year To date Actuals	Current Year Budget	% of Budget
Accessibility	1,191	1,208	5,475	22%
Community Recreation	43,952	41,238	117,100	35%
Interpretive	41,157	45,650	104,240	44%
Outdoor	364,904	353,424	906,890	39%
Special Events	193,361	155,322	454,804	34%
Runs, Races & Fitness	121,170	106,830	256,785	42%
<b>Total Revenue</b>	<b>765,735</b>	<b>703,672</b>	<b>1,845,294</b>	<b>38%</b>
<b>Expenses</b>				
Administration	220,415	242,169	843,702	29%
Accessibility	998	3,919	45,325	9%
Community Recreation	457,513	507,129	1,313,633	39%
Interpretive	255,217	284,226	907,669	31%
Outdoor	538,885	532,804	1,781,602	30%
Special Events	224,232	250,154	831,570	30%
Runs, Races & Fitness	135,905	148,984	442,141	34%
<b>Total Expenses</b>	<b>1,833,165</b>	<b>1,969,385</b>	<b>6,165,642</b>	<b>32%</b>
<b>Change in Fund Balance</b>	<b>(1,067,430)</b>	<b>(1,265,713)</b>	<b>(4,320,348)</b>	

**General Agency Balance Sheet**  
**October, 2025**

<b>Assets</b>	<b>Prior YTD Actuals</b>	<b>Year To date Actuals</b>
Cash & Cash Equivalents	24,006,588	24,475,582
Other Assets	1,261,639	1,208,206
<b>Total Assets</b>	<b>25,268,227</b>	<b>25,683,788</b>
<b>Liabilities</b>		
Accounts Payable	606,195	2,141,771
Other Liabilities	2,568,199	2,299,837
<b>Total Liabilities</b>	<b>3,174,394</b>	<b>4,441,608</b>
<b>Fund Balance</b>		
Assigned Fund Balance	1,250,000	1,250,000
Unassigned Fund Balance	20,843,833	19,992,180
<b>Total Fund Balance</b>	<b>22,093,833</b>	<b>21,242,180</b>
<b>Total Fund Balance and Liabilities</b>	<b>25,268,227</b>	<b>25,683,788</b>



## MEMORANDUM

**TO:** Kevin Bowie  
**FROM:** Charles McManus  
**DATE:** December 2, 2025  
**RE:** Approval to Host a General Obligation Bonds Public Hearing

During the FYE June 30, 2026 Budget process, the Commission approved staff to take the necessary steps to obtain approval of a General Obligation Bond to meet its continued Capital Plan requirements and manage Debt Service Fund Balance levels.

This month's Commission Meeting Agenda Packet includes a schedule of the steps involved and an estimated timeframe of the overall process. The first step in the process is to call for a public hearing to gather input regarding the issuance of the debt. The hearing would be held prior to the January 12, 2026 Commission meeting.

If the General Bond is approved, the Commission would use its existing Debt Service millage to pay back the bonds and is not requesting a millage increase.

Staff Recommendation:

**A motion to approve hosting a public hearing regarding the issuance of General Obligation Bonds in an amount not to exceed \$70,000,000.**

**PROPOSED SCHEDULE  
FOR OBTAINING APPROVAL FOR ISSUANCE OF  
GENERAL OBLIGATION BOND OF  
CHARLESTON COUNTY PARK AND RECREATION COMMISSION**

December 8	Resolution considered by the Commission calling for a public hearing to be held in the District as required by Resolution of Charleston County Council adopted July 20, 1982.
December 12, 19 and 26	Publication of Notice of Public Hearing to be held in the District as required by the Resolution adopted July 20, 1982
January 6	County staff recommendation to Finance Committee of County Council
January 14	Public hearing in the District
January 14	Following public hearing, Resolution adopted by the Commission authorizing Petition to Charleston County Council requesting that body to hold a public hearing
February 5	Petition to Charleston County Council presented at Finance Committee of Charleston County Council
February 10	County Council considers Resolution calling for public hearing as required by Section 6-11-830
February 13, 20 and 27	Publication of Notice of Public Hearing as required by Section 6-11-840
March 10	Public Hearing conducted by County Council
March 19	Finance Committee (for Ordinance)
March 24	First reading given by County Council to Ordinance approving the bond issue
March 26	Publication of Notice of Public Hearing for Ordinance
April 14	Second reading by County Council and public hearing
April 28	Third reading by County Council
April 30, May 7 and 14	Publication of Notice of Action Taken as required by Section 6-11-870
May 13	Bond Resolution considered by the Commission
June 4	Expiration of twenty-day period following last publication of Notice of Action Taken

## A RESOLUTION

CALLING FOR A PUBLIC HEARING TO BE HELD UPON THE QUESTION OF THE ISSUANCE OF NOT EXCEEDING \$70,000,000 OF GENERAL OBLIGATION BONDS IN ONE OR MORE SERIES OF CHARLESTON COUNTY PARK AND RECREATION DISTRICT AND TO PROVIDE FOR THE PUBLICATION OF THE NOTICE OF SUCH HEARING.

BE IT RESOLVED, by the Charleston County Park and Recreation Commission (the "Commission"), the governing body of the Charleston County Park and Recreation District, in Charleston County, South Carolina (the "District").

WHEREAS, the District is a special purpose district created prior to March 7, 1973 (having been created by Act No. 1595 of 1972, hereinafter referred to as the "Enabling Act"), located entirely within Charleston County. The Commission was charged with numerous powers chiefly relating to the responsibility of establishing and operating "county parks, tourist attractions and other facilities of like nature."

WHEREAS, the Commission has determined that it is necessary to order a public hearing to be held upon the question of the issuance in one or more series of not exceeding \$70,000,000 of general obligation bonds of the District in order to defray the costs of constructing, improving, expanding and renovating existing and new facilities and of undertaking other capital expenditures identified in the District's capital improvements projects plan, including but not limited to (i) developing Cooper River County Park, (ii) constructing new welcome center exhibits at Caw Caw Interpretive Center, (iii) constructing a new playground at Wannamaker County Park and undertaking improvements to Whirlin' Waters, (iv) acquiring land and constructing new rural parks, (v) constructing improvements to Palmetto Islands County Park, including to Splash Island, (vi) constructing and improving boat landings, (vii) constructing improvements to James Island County Park, including constructing a new climbing wall and undertaking improvements to Splash Zone, (viii) undertaking improvements to Lighthouse Inlet Historic Preserve and (ix) undertaking improvements pursuant to the ADA transition plan, as well as to pay costs of issuance (collectively, the "Project").

WHEREAS, this hearing is being held pursuant to the requirements and provisions of a Resolution adopted July 20, 1982, by County Council of Charleston County (hereinafter called "County Council") which is the governing body of Charleston County, which Resolution is hereinafter referred to as the Resolution of 1982. The Resolution of 1982 provides that no proposed bond issue of any public body (excluding Charleston County) requiring the approval of County Council shall be considered by County Council until a public hearing is held by the body proposing to issue the bond and certain information is submitted to County Council in writing.

### SECTION 1.

The Commission finds that it may be in the interests of the District to raise moneys for the Project and, in that connection hereby orders a public hearing to be held upon the question of the issuance in one or more series and in one or more years of not exceeding \$70,000,000 of general obligation bonds of the District.

### SECTION 2.

A public hearing shall be held on the question of the issuance of general obligation bonds of the District in an amount of not exceeding \$70,000,000, which hearing will be held at the District Office, 861 Riverland Drive, on James Island, South Carolina, beginning at 5:30 P.M. on Monday, January 12, 2026, and the Notice of such hearing attached hereto as Exhibit "A" shall be published once a week for three successive

weeks in The Post and Courier, which is a newspaper of general circulation in the County. The first such publication shall not be less than 16 days prior to the hearing date.

SECTION 3.

The aforesaid hearing shall be conducted publicly at the time and place above stated and both proponents and opponents of the proposed bond issue shall be given a full opportunity to be heard in person or by counsel.

SECTION 4.

Immediately following the above aforesaid public hearing, the Commission will hold a meeting to determine whether and to what extent the proposed bonds should be issued.

SECTION 5.

The Chairman of the Commission is hereby authorized and empowered to take all necessary action to provide for the holding of the aforesaid public hearing in accordance with the provisions of the Enabling Act.

DONE AT CHARLESTON, SOUTH CAROLINA, this 8<sup>th</sup> day of December, 2025.

\_\_\_\_\_  
Chairman, Charleston County Park and  
Recreation Commission

ATTEST:

\_\_\_\_\_  
Secretary, Charleston County Park and  
Recreation Commission

## EXHIBIT "A"

### NOTICE OF HEARING ON THE PROPOSED ISSUE OF NOT EXCEEDING \$70,000,000 OF GENERAL OBLIGATION BONDS OF CHARLESTON COUNTY PARK AND RECREATION DISTRICT

Charleston County Park and Recreation Commission (hereinafter called the "Commission") which is the governing body of Charleston County Park and Recreation District (hereinafter called the "District") a public service district created by Act No. 1595 of the 1972 Acts of the General Assembly of South Carolina (the "Enabling Act") which is located entirely within Charleston County, has determined that it is in the best interests of the District to raise moneys through the issuance of general obligation bonds of the District in one or more series in the amount of not exceeding \$70,000,000 in one or more series and in one or more years to defray the costs of improving, expanding and renovating existing and new facilities and of undertaking other capital expenditures identified in the District's capital improvements projects plan, including but not limited to (i) developing Cooper River County Park, (ii) constructing new welcome center exhibits at Caw Caw Interpretive Center, (iii) constructing a new playground at Wannamaker County Park and undertaking improvements to Whirlin' Waters, (iv) acquiring land and constructing new rural parks, (v) constructing improvements to Palmetto Islands County Park, including to Splash Island, (vi) constructing and improving boat landings, (vii) constructing improvements to James Island County Park, including constructing a new climbing wall and undertaking improvements to Splash Zone, (viii) undertaking improvements to Lighthouse Inlet Historic Preserve and (ix) undertaking improvements pursuant to the ADA transition plan, as well as to pay costs of issuance (collectively, the "Project"), and has ordered a public hearing to be held upon the question of the issuance of such bonds in accordance with the provisions of a Resolution adopted by Charleston County Council on July 20, 1982 and Article 5, Chapter 11, Title 6, Code of Laws of South Carolina, 1976, as amended (hereinafter collectively called the "Enabling Act").

Accordingly, notice is hereby given that a public hearing will be held during a scheduled meeting at the District Office, 861 Riverland Drive, on James Island, South Carolina, which meeting begins at 5:30 p.m., on the 12<sup>th</sup> day of January, 2026, on the question of the issuance of not exceeding \$70,000,000 of general obligation bonds of the District in one or more series and in one or more years, the proceeds of which will be expended to defray the cost of the Project.

For the payment of principal and interest of such bonds as they respectively mature and for the creation of such sinking fund as may be necessary therefor, the full faith, credit and taxing power of the District shall be irrevocably pledged and there shall be levied annually a tax without limit on all taxable property in the District sufficient to pay such principal and interest.

The District proposes the issuance of the bonds to provide county parks and tourist attractions for the residents of the District as well as visitors.

The aforesaid hearing shall be conducted publicly and both proponents and opponents of the proposed action shall be given full opportunity to be heard in person or by counsel and following the hearing, the Commission shall, by resolution, make a finding as to whether the consensus of the hearing was in favor of or opposed to the issuance of the proposed bonds and, if so determined, may authorize the Chairman and the Secretary to execute on behalf of the Commission a petition to County Council to hold a hearing pursuant to the Enabling Act and to take the other necessary steps to approve the issuance of each of said bonds.

The District is located entirely within Charleston County. The Enabling Act provides that bonds issued thereunder must be authorized by the governing body of the County wherein the District is located.

CHARLESTON COUNTY PARK AND RECREATION COMMISSION

Publication Dates:

December 12, 2025

December 19, 2025

December 26, 2025

STATE OF SOUTH CAROLINA

COUNTY OF CHARLESTON

I, the undersigned, Secretary of the Charleston County Park and Recreation Commission (the “Commission”), the governing body of the Charleston County Park and Recreation District, in Charleston County, South Carolina (the “District”), DO HEREBY CERTIFY:

That the foregoing is a true, correct and verbatim copy of a Resolution which was unanimously adopted by the said Commission at a duly called and regularly held meeting on December 8, 2025, at which meeting all/a majority of the members were present and remained throughout, and the same is now in full force and effect and has not been modified, amended, repealed or rescinded.

IN WITNESS WHEREOF, I have hereunto set my Hand and the Seal of the District this 8<sup>th</sup> day of December, 2025.

(SEAL)

\_\_\_\_\_  
Secretary, Charleston County Park and  
Recreation Commission



## MEMORANDUM

**TO:** Kevin Bowie  
**FROM:** Charles McManus  
**DATE:** December 2, 2025  
**RE:** 2026 Bond- Reimbursement Resolution

If approved, the resolution would provide more funding opportunities for the Commission's capital improvement projects.

The Commission has the opportunity to approve a reimbursement resolution that would allow the Commission to reimburse itself for project cost spent prior to the issuance of the 2026 bonds.

**A motion to authorize a reimbursement resolution under US Treasury regulations to allow the Commission to reimburse itself for project costs incurred prior to the issuance of the bonds in an amount not to exceed \$10,000,000.**

## A RESOLUTION

### BY THE CHARLESTON COUNTY PARK AND RECREATION COMMISSION, SOUTH CAROLINA MAKING DECLARATION OF INTENT PURSUANT TO UNITED STATES TREASURY DEPARTMENT, INTERNAL REVENUE SERVICE, REGULATION 1.150-2

WHEREAS, the Internal Revenue Service of the U.S. Treasury Department has promulgated Section 1.150-2 of the Treasury Regulations (the “Regulations”), which Regulations authorize an issuer to reimburse itself for expenditures made with respect to projects prior to the issuance of tax-exempt bonds for such projects; and

WHEREAS, the Charleston County Park and Recreation Commission (the “Commission”), the governing body of the Charleston County Park and Recreation District (the “District”) is adopting this Resolution to recite certain facts and intentions prior to the incurrence of the expenditures in the expected amount of not to exceed approximately \$10,000,000 and the issuance of tax-exempt bonds in the expected principal amount of not exceeding approximately \$40,000,000; and

WHEREAS, the Regulations require that the Commission as the governing body of the District or a person designated by the Commission declare an official intent to reimburse an expenditure prior to the incurrence of the expenditure; and

WHEREAS, the District anticipates incurring certain expenditures in connection with the construction, improvement, expansion and renovation of existing and new facilities and the undertaking of other capital expenditures identified in the District’s capital improvements projects plan, including but not limited to (i) developing Cooper River County Park, (ii) constructing new welcome center exhibits at Caw Caw Interpretive Center, (iii) constructing a new playground at Wannamaker County Park and undertaking improvements to Whirlin’ Waters, (iv) acquiring land and constructing new rural parks, (v) constructing improvements to Palmetto Islands County Park, including to Splash Island, (vi) constructing and improving boat landings, (vii) constructing improvements to James Island County Park, including constructing a new climbing wall and undertaking improvements to Splash Zone, (viii) undertaking improvements to Lighthouse Inlet Historic Preserve and (ix) undertaking improvements pursuant to the ADA transition plan, as well as to pay costs of issuance (collectively, the “Project”), prior to the issuance of tax-exempt bonds for such purposes;

NOW, THEREFORE, BE IT RESOLVED by the Commission as follows:

Section 1. The Commission hereby declares its intention to reimburse itself for expenditures on the Project with the proceeds of federally tax-exempt obligations pursuant to Regulation 1.150-2 and the Secretary of the Commission is hereby directed to maintain a copy of this declaration in the files and records of the Commission.

Section 2. To be eligible for reimbursement of any expenditures, the Commission will allocate the proceeds of any bonds to reimburse such expenditures not later than 18 months after the later of (a) the date on which the original expenditures were paid or (b) the date the project was placed in service or abandoned, but in no event more than three years after the original expenditures were paid. Expenditures, for purposes of

the declaration of official intent and the reimbursement allocation, do not apply to any preliminary expenditures for a project, up to an amount not in excess of 20 percent of the aggregate issue price of the bonds. Preliminary expenditures include architectural, engineering, surveying, soil testing, reimbursement bond issuance, and similar costs that were incurred prior to the commencement of acquisition, construction or rehabilitation of any project, other than land acquisition, site preparation, and similar costs incident to commencement of construction.

Section 3. Within one year of any allocation made pursuant to Section 2 of this Resolution, funds corresponding to the proceeds of the bonds will not be used in a manner that results in the creation of replacement proceeds, as defined in Regulation 1.148-1 to the Code, of any bonds. The preceding sentence does not apply to amounts deposited in a bona fide debt service fund, as defined in Regulation 1.148-1.

Section 4. The allocation described in Section 2 of this Resolution will not employ an abusive arbitrage device under Regulation 1.148-10.

Section 5. Any expenditures to be reimbursed from bond proceeds will be incurred solely to acquire, construct, or rehabilitate property or equipment having a reasonably expected economic life of at least one year.

Section 6. This Resolution does not obligate the District to issue bonds or undertake the Project if it determines that the issuance of bonds or the Project is not in the interests of the District.

Done in meeting duly assembled this 8<sup>th</sup> day of December, 2025.

CHARLESTON COUNTY PARK AND  
RECREATION COMMISSION

By: \_\_\_\_\_  
Chairman, Charleston County Park and  
Recreation Commission

ATTEST:

By: \_\_\_\_\_  
Secretary, Charleston County Park and  
Recreation Commission



## MEMORANDUM

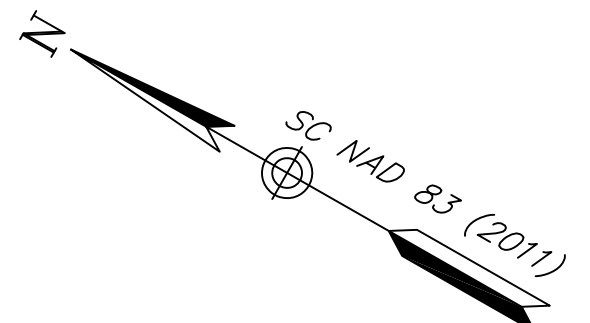
**To:** Commissioners  
**From:** Kevin Bowie  
**Date:** December 3, 2025  
**Re:** Acquisition of property in East County (5130 Highway 17 N)

Approximately 90.2 acres are available for purchase at 5130 Highway 17N near Guerins Bridge Road. The parcel has 42.99 acres of highland, 42.52 acres of wetlands and 4.7 acres of freshwater pond. This site is a fee simple purchase and creates many future possibilities to serve the East Rural Communities of Charleston County. These opportunities include active and passive recreation such as pool, sport courts, gym, nature trails and interpretation and recreational programming. Staff have completed an appraisal, Phase 1 environmental assessment and survey.

The funds for the acquisition will be expensed from CIP GL Line 20002700-90000-0000.

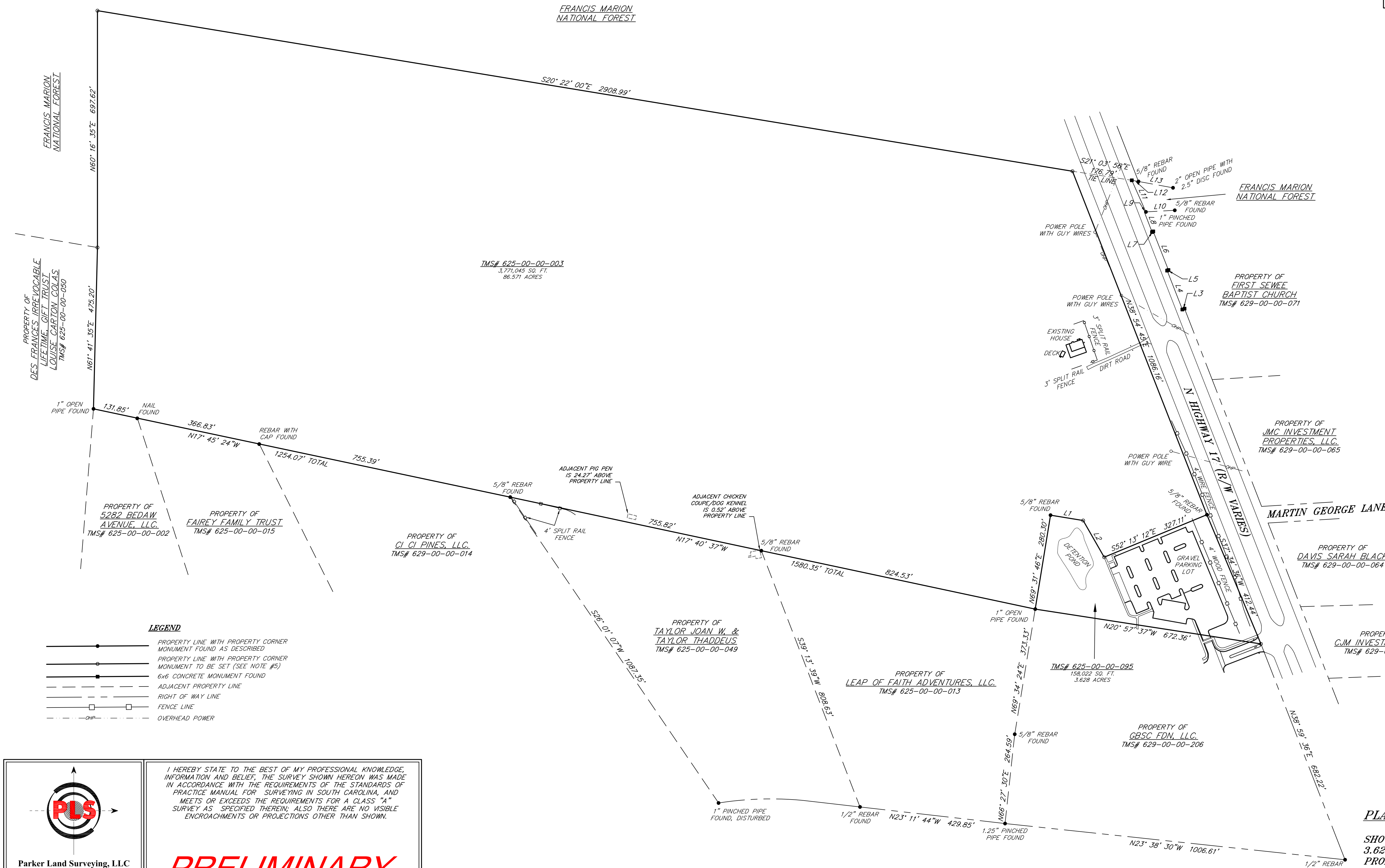
Staff Recommendation:

**Motion to approve the Executive Director's execution of a Purchase Sale Agreement with GBSC FDN, LLC, for the purchase of the 5130 Highway 17 N property, TMS # 625-00-00-095 and TMS # 625-00-00-003 for the appraised value of \$7,510,000 and associated closing cost.**



LOCATION MAP N.T.S.

- NOTES:
1. BY GRAPHICAL PLOTTING ONLY THIS PROPERTY APPEARS TO LIE WITHIN FLOOD ZONE "X" AS PER F.I.R.M. COMMUNITY PANEL NUMBER 45019C 0335 K, WITH A REVISION DATE OF JANUARY 29, 2021.
  2. PROPERTY IS NOT LOCATED WITHIN THE LIMITS OF MODERATE WAVE ACTION.
  3. THIS SURVEY IS BASED ON FOUND MONUMENTATION, REFERENCES, AND LINES OF OCCUPATION.
  4. THE AREA WAS DETERMINED BY THE COORDINATE METHOD.
  5. PROPERTY CORNERS FOUND AS LABELED. ANY PROPERTY CORNERS TO BE SET SHALL BE 3/4" REBAR.
  6. ANYTHING SHOWN OUTSIDE THE DEFINED BOUNDARIES OF THIS SURVEY IS FOR DESCRIPTIVE PURPOSES ONLY.
  7. THE PUBLIC RECORDS REFERENCE ARE ONLY THOSE USED FOR ESTABLISHMENT OF THE BOUNDARY OF THIS PROPERTY AND DOES NOT IN ANY WAY CONSTITUTE A TITLE SEARCH.
  8. PROPERTY MAY BE SUBJECT TO EASEMENTS AND RESTRICTIONS NOT OBVIOUS OR APPARENT TO THE SURVEYOR.
  9. THE HORIZONTAL DATUM IS SC NAD 83 (2011 ADJUSTMENT) STATE PLANE.
  10. VERTICAL DATUM IS NAVD 1988.
  11. PROPERTY IS ZONED: AG-10
  12. TOTAL AREA: 3,929,067 sqft - 90.199 ACRES
  13. THIS SURVEY DOES NOT CONFIRM OR DENY THE EXISTENCE OF WETLANDS.
  14. SUBSURFACE AND ENVIRONMENTAL CONDITIONS WERE NOT EXAMINED OR CONSIDERED AS PART OF THIS SURVEY. NO STATEMENT IS MADE CONCERNING THE EXISTENCE OF UNDERGROUND UTILITIES OR OVERHEAD CONTAINERS OF FACILITIES THAT MAY EFFECT THE USE OR DEVELOPMENT OF THIS TRACT.
  15. SETBACKS PER ONLINE ORDINANCES FOR "AG-10" AND REFERENCED PLAT AND SHOULD BE VERIFIED WITH ALL GOVERNING MUNICIPALITIES AND ASSOCIATIONS BEFORE FUTURE DESIGN OR CONSTRUCTION



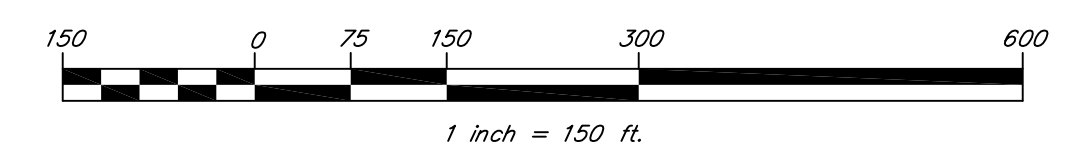
- LEGEND
- PROPERTY LINE WITH PROPERTY CORNER MONUMENT FOUND AS DESCRIBED
  - PROPERTY LINE WITH PROPERTY CORNER MONUMENT TO BE SET (SEE NOTE #5)
  - 6x6 CONCRETE MONUMENT FOUND
  - - - ADJACENT PROPERTY LINE
  - - - RIGHT OF WAY LINE
  - - - FENCE LINE
  - - - OVERHEAD POWER

**Parker Land Surveying, LLC**  
 5910 Griffin Street  
 Hanahan, SC 29410  
 Phone: (843) 554-7777  
 PLSSC.COM

I HEREBY STATE TO THE BEST OF MY PROFESSIONAL KNOWLEDGE, INFORMATION AND BELIEF, THE SURVEY SHOWN HEREON WAS MADE IN ACCORDANCE WITH THE REQUIREMENTS OF THE STANDARDS OF PRACTICE MANUAL FOR SURVEYING IN SOUTH CAROLINA, AND MEETS OR EXCEEDS THE REQUIREMENTS FOR A CLASS "A" SURVEY AS SPECIFIED THEREIN. ALSO THERE ARE NO VISIBLE ENCROACHMENTS OR PROJECTIONS OTHER THAN SHOWN.

**PRELIMINARY**

RICHARD A. ALDRIDGE S.C.P.L.S. NO. 20854



**PLAT**

SHOWING THE BOUNDARY OF TMS# 625-00-00-095, 3.628 ACRES, AND TMS# 625-00-00-003, 86.571 ACRES, PROPERTY OF GBSC FDN, LLC., LOCATED NEAR THE TOWN OF AWENDAW, CHARLESTON COUNTY, SOUTH CAROLINA

DATE: SEPTEMBER 2, 2025 SCALE: 1" = 150'



## MEMORANDUM

**TO:** Kevin Bowie  
**FROM:** Charlie McManus  
**DATE:** November 4, 2025  
**RE:** Award Contract – Kiawah Beachwalker Park (BWP) Boardwalk Replacement

An Invitation for Bid was issued and publicly advertised to replace the boardwalk at Kiawah Beachwalker Park. Six contractors responded.

T. M. Taylor Construction Inc. submitted the lowest bid in the amount of \$127,497.25.

The Kiawah Beachwalker Park's Boardwalk Replacement project is budgeted to come from the CIP Reserves GL Line #21350000-90070-0000.

Staff Recommendation:

**A motion to enter into a contract with TM Taylor Construction, Inc., for Kiawah Beachwalker Park's Boardwalk Replacement in the amount of \$127,497.25 with funds coming from the approved CIP budget.**



## MEMORANDUM

**TO:** Commissioners  
**FROM:** Kevin Bowie  
**DATE:** December 3, 2025  
**RE:** Riverland Drive Easement Request for a Multi-use Path

Charleston County government is implementing a Central Park and Riverland Drive Improvements Project. One of the key elements is to improve pedestrian and bicycle access along Riverland Drive from Woodland Shores Road to James Island County Park.

Charleston County is requesting 0.597 acres of permanent easement from Charleston County Park and Recreation Commission. This proposed easement fronts the Headquarters building, consisting of both highlands and wetland (TMS# 341-00-00-053). The independent appraisal of this tract is valued at \$81,900.00.

Charleston County is respectfully requesting donation of the necessary right-of-way to support this public improvement project.

Staff Recommendation:

**A motion to approve the donation of 0.597 acres of right-of-way on parcel number 341-00-00-053) for a permanent easement to Charleston County for the construction of a multi-use path.**



William L. Tuten  
Administrator, Charleston County

843.958.4000  
[btuten@charlestoncounty.org](mailto:btuten@charlestoncounty.org)  
4045 Bridge View Drive, B-270  
North Charleston, SC 29405

December 1, 2025

Chairman Brad Taggart  
Charleston County Park & Recreation Commission  
861 Riverland Drive  
Charleston, SC 29412

Re: Request for Voluntary Donation of Property to Support the Central Park and Riverland Drive Improvements Project

Dear Chairman Taggart,

I hope this letter finds you well. Charleston County Government values the collaboration between Charleston County and the Charleston County Park & Recreation Commission (CCPRC). Our shared commitment to safety, accessibility, and quality of life continues to improve communities across the county.

The *Central Park and Riverland Drive Improvements Project* is a key part of the County's effort to improve safety and traffic flow at major intersections on James Island while expanding pedestrian and bicycle access to public destinations. The project will enhance the intersection of Riverland Drive and Central Park Road to better serve all modes of transportation, minimize impacts to grand trees, and provide a safe, continuous bicycle and pedestrian connection to James Island County Park.

Specifically, the project includes construction of dedicated turn lanes from Central Park Road onto Riverland Drive, installation of pedestrian crosswalks with Rectangular Rapid Flashing Beacons (RRFBs), and sidewalk improvements along Riverland Drive. Existing sidewalk will be repaired from Woodland Shores Road to Lucky Lane, and new sidewalk will be constructed from Lucky Lane to County-owned property, transitioning into a 10-foot-wide multi-use path extending to the Lowcountry Senior Center and connecting directly to James Island County Park. The project is in the right-of-way acquisition phase and scheduled for bid advertisement by the end of 2025, with construction anticipated to begin in early 2026.

To complete the project, the County requires a small portion of CCPRC property located at 861 Riverland Drive (TMS# 341-00-00-053). The proposed impacts include the permanent acquisition of 26,022 square feet (0.597 acres) of right-of-way for the new multi-use path, removal of 11 trees of varying condition, and trimming of one live oak branch to achieve adequate pedestrian clearance. A County-contracted appraiser has valued the total land acquisition and other contributing items at \$81,900.00.

Charleston County respectfully requests that CCPRC consider voluntarily donating the necessary right-of-way to support this public improvement. This donation will allow the County to advance the project on schedule and deliver meaningful safety and connectivity benefits to the residents and visitors of James Island. If the Commission is amenable, Charleston County staff will prepare or review the necessary conveyance documents and coordinate with CCPRC for formal approval and execution. Tree trimming will be monitored by a certified arborist, and the County will ensure that all work within CCPRC property meets applicable tree-protection standards.

Thank you and your commission for your continued partnership in providing safe and accessible public spaces. Should you wish to discuss this matter further, please contact Mr. Alex Owsiak, Capital Programs Manager, Charleston County Public Works, at [aowskiak@charlestoncounty.org](mailto:aowskiak@charlestoncounty.org) or (843) 202-6155.

With kindest regards,

William L. Tuten  
Charleston County Administrator

# COMMISSION REPORT

D E C E M B E R 2 0 2 5



CHARLESTON COUNTY PARK  
& RECREATION COMMISSION

Welcome





# This Day in History: Nov. 9, 1990: Charleston Holiday Festival of Lights Launches

By Live 5 Web Staff Published: Nov. 9, 2025 at 6:00 AM EST | Updated: Nov. 9, 2025 at 4:05 PM EST

CHARLESTON, S.C. (WSCS) - A Lowcountry holiday tradition is marking 35 years on Sunday.

The Charleston Holiday Festival of Lights has been bringing joy to Charlestonians since Nov. 9, 1990, when it first debuted at the James Island County Park. Organizers started the event after Hurricane Hugo destroyed many of the trees in the area.

The inaugural event featured 18 light displays over a two-mile route and attracted nearly 85,000 people. Decades later, the festival has grown to include over 750 custom-built light displays and attracts millions of visitors annually.

While it includes classic holiday designs, many displays are unique and designed by the park's staff. Some displays highlight Charleston's history, including displays depicting Civil War cannons and British troops who landed on the island in 1780.

After park maintenance and electrical staff member Rich Raab learned the craft of creating light displays, he began building his own light designs on-site in the park.

Now every year, new light displays are unveiled and each one takes between six and ten weeks to create. To this day, Raab continues to work with the Festival of Lights.

Over the years, the festival has expanded to include more than just lights. Families from all over can enjoy attractions like a walking trail, a holiday-themed train ride, a carousel, and a chance to sit with Santa.

The Festival of Lights will make a return to the Lowcountry this year, starting Nov. 14 and running until the last day of the year.



Cover photo: Greeting Card from Murray LaSaine Montessori at Holiday Festival of Lights



### Holiday Fun Guide

## Holiday Festival of Lights returns to James Island County Park on Nov. 14

by: Tim Renaud | Posted: Nov 3, 2025 / 06:53 AM EST

CHARLESTON COUNTY, S.C. (WCBT) – You are likely putting away the Halloween decorations as you enjoy what’s left of the trick-or-treat candy, but the calendar is now full-steam-ahead to Thanksgiving and the holiday season.

A beloved holiday tradition, the Holiday Festival of Lights, returns to James Island County Park in just a few weeks, offering dazzling light displays, visits with Santa Claus, and trips through the enchanted forest made up of lights and displays.

The 2025 Holiday Festival of Lights will be open nightly from 5:30 p.m. to 10 p.m. beginning Nov. 14 through Dec. 31.

More than five million people have ventured through the James Island light show since it opened in 1995. It features over 750 light displays along a three-mile drive through James Island County Park.

At roughly the halfway point, guests can park their vehicles and enjoy family-friendly activities like holiday shopping, delicious treats, and visits with Santa.

Some of the activities include taking a ride on the Festival Express train, viewing the 50-ton sand sculpture, checking out the magnificent, oversized holiday greeting cards carefully crafted by local students, or taking a spin in the old-fashioned carousel.

There will be plenty of treats to enjoy, such as roasting marshmallows over an open fire or sipping hot chocolate while browsing the gift shops.



Santa will be at the Holiday Festival of Lights each night through Dec. 23.

To ensure a smooth visit to the Holiday Festival of Lights, organizers worked to determine each night’s crowd levels, categorized as light, moderate, and heavy. Admission prices will vary on the night, and guests can save money by purchasing their tickets online in advance.

- ◆ Green (light crowd level) nights will be \$15 per vehicle in advance or \$25 at the gate.
- ◆ Yellow (moderate crowd level) nights will be \$25 per vehicle in advance or \$35 at the gate.
- ◆ Red (heavy crowd level) nights will be \$30 per vehicle in advance or \$45 at the gate.

A calendar denoting each night’s color category is available at [HolidayFestivalofLights.com](http://HolidayFestivalofLights.com).



## Holiday Festival of Lights sets traffic and ticket changes. What else you need to know.

By Megan Fernandes mfernandes@postandcourier.com | Nov 14, 2025



**Vehicles drive through the light display during the Charleston County Parks Holiday Festival of Lights at James Island County Park.** File/Andrew Whitaker/Staff

CHARLESTON — Thanksgiving is around the corner, but the 36th annual Holiday Festival of Lights kicks off the festive season Nov. 14 as its more than 2 million colorfully coordinated bulbs were switched on.

There are some changes this year to the onsite pricing structure and the road construction around James Island County Park.

Central Park Road will reopen to vehicular traffic through the end of the year for the festival, according to Charleston County officials. It will remain open each night and on weekends to help alleviate traffic. The road has been closed since June as city crews complete drainage improvement projects.

Last year, 60,615 vehicles — accounting for 211,770 attendees — navigated the park’s maze of holiday displays. Attendance was up nearly 2 percent from 2023.

The annual Festival of Lights features over 750 displays along a three-mile drive. Guests can park their car and explore other areas of the park to enjoy family activities like a smores bonfire, train and carousel rides, or holiday shopping.

To manage wait times at the Festival of Lights, each event night has been categorized with the color green, yellow or red based on historic attendance levels, as it has in the last few years. Admission prices vary based on the night, and guests can save up to \$15 on red nights by purchasing tickets online in advance.

Green nights with lighter crowds will be \$15 per vehicle in advance or \$25 at the gate; busier yellow nights will be \$25 per vehicle in advance or \$35 at the gate; and the most popular red nights will be \$30 per vehicle in advance or \$45 at the gate. The cost of the ticket at the gate for each category went up by \$5.



**The annual Holiday Festival of Lights will be on display at James Island County Park nightly from Nov. 14 through Dec. 31.** Charleston County Parks

**traffic and ticket changes — continued**

The festival is open nightly until Dec. 31 from 5:30-10 p.m.

Charleston County Parks director Eric Stewart said the tiered price system has shifted some demand from the heaviest evenings.

“It has been successful and each year we see growth in the number of people who are buying their ticket ahead of time,” Stewart said. “Not only is it convenient, but it is also a great way to save some money. If people really want a great value, the combination of buying their ticket online and choosing a ‘green’ night is the best way to go, and they will have a less crowded experience.”

A calendar denoting each night’s color category is available at [HolidayFestivalofLights.com](http://HolidayFestivalofLights.com).

The festival has come a long way through the years. In the wake of Hugo the year before, the Holiday Festival of Lights made its debut in 1990 and attracted 85,000 visitors with only 18 light displays over a two-mile route. In the festival’s 36-year span, more than 5 million people have attended it, according to the county.

Each year, the festival staff generally sees license plates from all 50 states, in addition to a large concentration of South Carolinians who drive across the state.

All of the light displays are constructed on-site by park staff at James Island County Park, many of which are Lowcountry and Charleston landmarks like Fort Sumter, Rainbow Row, the Cooper and Ravenel Bridges, the USS Yorktown, St. Michael’s Church and others.

Kris Kringle will be at the Holiday Festival of Lights nightly from opening night through Dec. 23. There will also be a New Year’s Eve fireworks display on Dec. 31 at 8 p.m.



**The Holiday Festival of Lights has more than 750 light displays.** Staff/Megan Fernandes



WINTER 2025

FEATURE

# Holiday Fun FOR EVERYONE





# CREATING A Sensory-Friendly AND INCLUSIVE HOLIDAY TRADITION

by Sarah Reynolds, Charleston County Park and Recreation Commission

**J**ames Island County Park's Holiday Festival of Lights is known as a bustling holiday light show, and visits with Santa are a popular part of the festival. However, visiting with St. Nick at night in the middle of a crowded event can be very stimulating, and often involves waiting in line. The experience can be especially stressful for families who have a member with disabilities. Five years ago, the Charleston County Park and Recreation Commission (CCPRC) introduced an event aimed to make the experience more peaceful, allowing people with disabilities and their families the opportunity to enjoy the time-honored tradition of a visit with St. Nick in a calming, subdued environment.

Inclusive Santa provides people with disabilities with the Holiday Festival of Lights' "Santa experience" in a better-suited environment. Held on select Sundays in December, Inclusive Santa is available for reservation between 10 a.m.-2 p.m. Families of up to five people come to the Park Center at James Island County Park during their reserved timeframe to visit one-on-one with Santa. A professional photographer takes photos of the experience, and a digital package of all images are provided as part of registration.

Santa is even fluent in American Sign Language. To better accommodate guests with sensory difficulties, sensory bags equipped with noise-canceling headphones, fidget tools, and verbal cue cards are available during the event. A dedicated space is also available for guests who may feel overwhelmed by the environment.

The festival's popular gift shops and Sweet Shoppe, usually only open at night, are also open during Inclusive Santa. And as an added

bonus, participants receive a complimentary pass to come back to enjoy the Holiday Festival of Lights on a night of their choosing.

"It is completely heart-warming to see participants light up spending one-on-one time with Santa," said CCPRC Assistant Director of Recreation Melissa Bernhardt. "Participants who are deaf may have never had the chance to 'speak' to Santa before, and this event allows them to. Some families bring letters or photos that their kids have written to Santa and really appreciate the less crowded and quiet environment."

CCPRC has received wonderful feedback on the program, ranging from praise to touching stories from parents who cried tears of joy watching their children speak with Santa and sit on his lap. One Inclusive Santa customer shared: "My grandson is autistic, and this is the only way he would be able to visit with Santa. I am so grateful for programs like this that allow him to experience a 'normal' and wonderful rite of passage as a child."

**"This event has touched so many and has given joy to many families during the holiday season," said CCPRC Festival and Event Coordinator Ryan VanderKlok.**

"This event has touched so many and has given joy to many families during the holiday season," said CCPRC Festival and Event Coordinator Ryan VanderKlok. "Inclusive Santa has helped break down barriers by creating a calming, less stressful environment while still preserving the Santa experience."





## Scene Calendar: Charleston area events Nov. 13-19

By Wyatt Barczak and Diana Sidorevich Nortje wbarczak@postandcourier.com dsidorevich@postandcourier.com  
Nov 11, 2025



Runners and walkers will be the first in Charleston to experience more than 200 magical light displays at the James Island County Park.  
File/Staff

THURSDAY

### Festival of Lights Fun Run and Walk

What: Bring a flashlight, put on a provided glow necklace and enjoy a brisk evening run or walk through the park among festive lights.

When: 6 p.m. Nov. 13

Where: James Island County Park, 871 Riverland Drive

Price: \$38 per vehicle

More Info: [tinyurl.com/eme9sw4x](https://tinyurl.com/eme9sw4x)



## Experience the Holiday Festival of Lights before it opens with a non-competitive fun run

by ABC News 4 Staff | Mon, November 10, 2025 at 2:24 PM

JAMES ISLAND, S.C. (WCIV) — Looking for a chance to get a sneak peek at the Holiday Festival of Lights on James Island? Here's how!

The Holiday Festival of Lights Fun Run and Walk takes place Wednesday, Nov. 12 and Thursday Nov. 13 at James Island County Park, offering runners and walkers of all experience levels a chance to check out this year's light displays before the festival officially starts on Nov. 14.

The run and walk is two miles long and non-competitive. Socialized dogs on short, non-retractable leashes are welcome, but retractable leashes are not permitted. The course is wheelchair and stroller-friendly, but bicycles, skateboards, roller skates/blades, and scooters are not allowed.

The event is expected to sell out and registration is required. Tickets are \$38 per vehicle and those interested should arrive at the park by 6 p.m., with park gates closing at 6:30 p.m.



The Holiday Festival of Lights returns to James Island County Park on Friday, Nov. 14. (WCIV)

For more information or to sign up, [click here](#) or call 843-795-4386.



Charleston County News

## Holiday Festival of Lights opens for the season Friday

by: Tim Renaud | Posted: Nov 14, 2025 / 05:18 AM EST

JAMES ISLAND, S.C. (WCBD) – It’s opening night for a beloved holiday tradition.

The Holiday Festival of Lights at James Island County Park will welcome the first visitors of the 2025 Christmas season when the gates open at 5:30 p.m.

Charleston County Parks is celebrating the 36th year of the award-winning light show, which features more than 750 displays along a three-mile drive around the park.

More than five million people have attended the event since it opened in 1995. In addition to viewing the incredible light displays, guests can park their vehicles and enjoy family-friendly activities like holiday shopping, delicious treats, and visits with Santa.

How Gary Sinise is helping the nonprofit CreatiVets build 'a place to go when the PTSD hits

Some of the activities include taking a ride on the Festival Express train, viewing the 50-ton sand sculpture, checking out the magnificent, oversized holiday greeting cards carefully crafted by local students, or taking a spin in the old-fashioned carousel.

There will be plenty of treats to enjoy, such as roasting marshmallows over an open fire or sipping hot chocolate while browsing the gift shops.

Santa will be at the Holiday Festival of Lights each night through Dec. 23.

To ensure a smooth visit to the Holiday Festival of Lights, organizers worked to determine each night’s crowd levels, categorized as light, moderate, and heavy. Admission prices will vary on the night, and guests can save money by purchasing their tickets online in advance.

- ◆ Green (light crowd level) nights will be \$15 per vehicle in advance or \$25 at the gate.
- ◆ Yellow (moderate crowd level) nights will be \$25 per vehicle in advance or \$35 at the gate.
- ◆ Red (heavy crowd level) nights will be \$30 per vehicle in advance or \$45 at the gate.

A calendar denoting each night’s color category is available at [HolidayFestivalofLights.com](http://HolidayFestivalofLights.com).





## 36th annual Holiday Festival of Lights opens at James Island County Park

by Jessica Klinger | Sat, November 15, 2025 at 10:25 AM

JAMES ISLAND, S.C. (WCIV) — One of Charleston County Parks' most anticipated events of the year is back for the holiday season.

"It's one of the most popular holiday attractions here in the Lowcountry," said Sarah Reynolds, the public information coordinator for Charleston County Parks. "The Holiday Festival of Lights is a three-mile drive through over 750 light displays and an estimated 2 million lights."

Visitors can expect to see their favorite light displays, and new additions.

"We always have a little something new in the lights every year, so you'll have to come out and see what's new," said Reynolds.

New for this year? A New Year's Eve fireworks display on Dec. 31 at 8 p.m.

In addition to the drive of fantastical lights, visitors are also encouraged to park the car and head over to Santa's Village.

"We have gift shops. There's a sweet shop. Santa is here every night through December 23rd. We have special entertainment and live music on other nights. And so there's really so much more to do and see. There's a carousel, a festival train," said Reynolds. The village also features food vendors, s'mores, and a rock-climbing wall.

In addition to Santa Claus, the Grinch also stopped by for opening night to promote 'How the Grinch Stole Christmas the Musical' at the North Charleston Performing Arts Center.

Charleston County Parks encourages visitors to the Holiday Festival of Lights to buy tickets in advance, and to take advantage of discount-pricing days.

"We have over 200,000 people typically each year that come to the Holiday Festival of Lights. So that's a lot. And I think it's around 60,000 cars," said Reynolds.





## Holiday Festival of Lights returns

by: Hannah Baker | Posted: Nov 15, 2025

JAMES ISLAND, S.C. (WCBD) – The holiday season has approached and that means holiday activities around the Lowcountry. A local favorite is back for the season, the Holiday Festival of Lights at James Island County Park.

The Holiday Festival of lights officially opened Friday evening, a tradition for over 30 years which has drawn in over 5 million people in that span. Additionally a huge economic and tourist boost for the area.

“Each year we have something a little new and different, so you have to come out and see what’s new this year,” explained Charleston County Parks, Sarah Reynolds. “We’re also offering entertainment and special guests on select nights.”

A calendar of the Holiday Festival of Lights on the website shows the events coming up for this season, including the Grinch from Doctor Seuess’s How the Grinch Stole Christmas.

The festival features over 750 light displays over a three mile long drive through James Island County Park. Additionally, family activities, holiday shopping, and tons of holiday centered events.

With crowds come traffic, Charleston County has been working to mitigate the congestion by reopening Central Park Road on Friday along with the festival.

It’s a vital road, explained Charleston County Public Works and Stormwater Project Manager, John Prorock. “I’ve learned that as the project started and got going at how important this road is, because there’s only so many cross over roads.”



The road is set to remain open each evening and on weekends for the duration of the festival to accommodate the heavily increased traffic. James Island resident, Yancey Epps, explained the re-opening will make a big difference for drivers in the area.

“It’s just going to make traffic flow so much easier going down Central Park Road. And for us who live right there, it’s just going to make it more timely,” said Epps.

The Holiday Festival of Lights officially opened Friday, and will remain open until 10 pm every night until December 31st.



Charleston County News

**Experience the Holiday Festival of Lights from a different perspective**

by: Tim Renaud | Posted: Nov 18, 2025 / 06:40 AM EST

JAMES ISLAND, S.C. (WCBD) – You can experience the magic of the Holiday Festival of Lights in a new way – from the cockpit of a dragon boat on the lake at James Island County Park.

People visit James Island County Park each holiday season and embark on a three-mile drive to view more than 750 magnificent light displays and enjoy family-friendly attractions and shopping.

In addition to driving through the park, guests can also register online for an evening on the lake as they take in the glimmering lights from a different perspective.

“As the sun goes down and the lights come on for the evening, participants will enjoy an on-the-water introduction to the ancient sport of dragon boating,” said Charleston County Parks. “They will also get an up-close and unique view of some of the most iconic light displays on the lake.”

For those interested, the program is only offered on select Monday and Tuesday nights during the annual event: Nov. 17, 18, 24, and 25, and Dec. 1, 2, 8, 9, 15, and 16.

Registration costs \$30 per person and includes dragon boating and day-of admission to the Holiday Festival of Lights, so when your time on the water is over, you can sip on some hot chocolate and take the journey around the park.

Experience is not necessary. The program is offered for ages 10 and up; however, those 15 and under must be accompanied by a registered chaperone. You must register online in advance.

Space is limited, so do not wait to register.





WINTER 2025



## Behind the (Snowy) Scenes at Isle of Palms County Park

BY Nick Salleroli, Isle of Palms County Park

**C**harleston residents were caught off guard January 21-22, 2025, when an unexpected winter storm delivered up to 4 inches of snow across the county. For some, the rare snowfall was a welcome novelty. For others, it was an unwelcome disruption.

At Isle of Palms County Park, the scene was unlike anything visitors were accustomed to. The maintenance crew, accustomed to preparing the shoreline for sunbathers and beachgoers, was instead called in to assess snow and ice accumulation and provide a safety report. Their estimate recorded about 2 inches of snow at the park, transforming the familiar landscape into something entirely new.

Palm trees, more often associated with summer breezes, glistened under a thin coat of ice. The parking lot and walkways were layered with about 2 inches of snow and ice, while the boardwalks, stairs, and decks were completely blanketed in fresh accumulation. What was normally a setting for flip-flops and sunscreen became, overnight, a winter wonderland.

Once officials gave the all-clear for safe travel, employees wasted no time preparing the park for reopening. The maintenance crew worked tirelessly to clear paths and ensure the area was safe for visitors. Their dedication was driven not just by duty, but also by the anticipation of welcoming guests — both the familiar faces they knew by name and first-time visitors eager to witness the rare sight of snow-covered beaches.

Typically, Isle of Palms is celebrated for its soft, white sand. But on January 23, that sand disappeared under a bright, white blanket of snow. For a brief moment, the beach looked more like a mountain meadow than a coastal escape. Residents and visitors alike stopped to take photographs, capturing images seldom seen in Charleston County. These pictures served as reminders of nature's unpredictability and its power to transform even the most familiar places.

The snow, of course, did not last. The sun eventually reclaimed the sand and surf, melting away the temporary layer of winter. But before it did, the Isle of Palms County Park crew ensured



**Behind the scenes** — continued



**“Their estimate recorded about 2 inches of snow at the park, transforming the familiar landscape into something entirely new.”**

the park was open and safe for all to enjoy, giving the community a chance to experience this once-in-a-lifetime moment together.

We commend the Isle of Palms County Park maintenance team for their hard work and perseverance. Clearing walkways, ensuring safety, and reopening the park before the snow vanished from the beach and dunes was no easy task. Thanks to their efforts, visitors were able to enjoy a rare and beautiful chapter in Charleston’s coastal story.

South Carolina Recreation & Parks | [www.scrpa.org](http://www.scrpa.org)



WINTER 2025

MAINTENANCE INNOVATIONS:

# CONSIDERING Autonomous Tools TO INCREASE EFFICIENCIES

BY Phil Macchia and Eric Stewart,  
Charleston County Park and Recreation Commission



**T**he autonomous phase of park maintenance is moving into the mainstream—both in conversation and in potential budgeting. Across the state, agencies are considering a growing variety of autonomous tools, including robotic mowers, self-driving utility vehicles, drone-based spraying systems, and automated irrigation monitors. Some agencies are researching these options, and a few have already started using them. As with any new technology, questions and concerns should be expected and addressed.

Staff involvement must be central to the conversation. As adoption grows, it's natural for staff to have questions and concerns. These are valid and should be taken seriously during discussions about new equipment. For example, will staff worry about being replaced? Will part-time positions be cut?

We know the value our staff brings to our organizations. Including their input during research and development helps ease concerns and increases acceptance of new tools.

Charleston County Parks is currently leasing the M.52 mower from Scythe. In its first season, the autonomous mower has already proven to be a strong support tool for our dedicated maintenance crews, helping maintain the county's 11,000-plus-acre park system.

In its first summer alone, the M.52 mowed several hundred acres, most of it autonomously, with an average production rate of 1.5 acres per hour.

"The mower has allowed us to better optimize our personnel," said Read Bradford. "While the M.52 is not a replacement for employees, it does free up staff to focus on other tasks while the mower works, creating a more efficient operation and a better final result for Charleston County residents."

This technology will only continue to advance. The demand for creative ways to manage fields, meadows, and open spaces will grow. While this innovation is necessary, it's important to view it not as a way to cut costs or reduce staff, but as a chance to gain time.

*What we do with that time will define the future.*

**“As with any new technology, questions and concerns should be expected and addressed.”**





## County leaders consider over \$1M funding for Johns Island nature trail project

By Tiana Maxwell | Published: Nov. 6, 2025 at 3:50 PM EST | Updated: Nov. 6, 2025 at 7:44 PM EST

CHARLESTON, S.C. (WCSC) - The Kiawah Conservancy is requesting more than \$1 million towards their nature trail project on Johns Island.

The nonprofit 501(c)(3) is requesting more than \$1.6 million in Greenbelt funds from Charleston County Finance Committee leaders on Thursday night.

The funds will go towards the purchase of nearly 11 acres of land located off of Betsy Kerrison Parkway on Johns Island.

Conservancy leaders say the more than \$600,000 will focus on the property purchase. The remaining one million will fund public access improvements such as roads, trails and bridges to connect areas to the Hammock Islands.

The Greenbelt program has around \$16 million set aside to fund rural projects. Those funds stem from the county's Transportation Sales Tax Funds.

County Greenbelt Program deputy director Chris Dubuque says funding these projects is vital.

"Not only for public access but also to help establish wildlife habitat, to protect Lowcountry natural resources and to really provide natural infrastructure to help mitigate flooding."

The purchase will mark Phase Five of the project in the organization's plan to purchase around 100 acres of land in the area.

The conservancy group began purchasing land for the project in 2022. The plan is to preserve the acres of land to create a wildlife sanctuary and buffer in Johns Island.

Kiawah Conservancy Land Preservation Specialist Collie Farah, a Johns Island native who has served with the organization since 2021, says there is a high need for conservation efforts in the southern areas. He says the park will be the only other public space for the community aside from the **Mullet Hall Johns Island County Park**.

"All the pieces seemed to fall in place and really that falls with the community. The community believed in what we were doing and we



**The Kiawah Conservancy plans to preserve about 100 acres of land off of Betsy Kerrison Parkway.**

had four contiguous separate land owners that chose to put their land under conservation instead of selling it to a developer," Farah said.

Leaders expect the park to be open to the public by the Fall of 2026. Visitors will be able to enjoy the park from sunrise to sunset for seven days a week.

Sweetgrass stands, educational events and more than a mile-long trail will be available for visitors.

The funds will go before the county council for approval if the committee passes to award the funds. Council leaders will decide on the recommendation on Nov. 11.





Charleston County News

## Central Park Road will reopen to accommodate influx of traffic to nearby Holiday Festival of Lights

by: Tim Renaud | Posted: Nov 13, 2025 / EST 07:58 AM EST

JAMES ISLAND, S.C. (WCBD) – Central Park Road will reopen to vehicular traffic Friday as Charleston County prepares for an influx of visitors to nearby James Island County Park.

Thousands of people travel to the park each year for the Holiday Festival of Lights, which also begins Friday. The surrounding area is expected to see heavier traffic as guests head to the annual event.

Charleston County officials said the road will reopen at 5 p.m. Friday, Nov. 14, and remain open each evening and on weekends for the duration of the festival to accommodate increased traffic.

Construction on the Central Park Road Drainage Project will continue during the season. Periodic daytime closures may occur, but officials said they should not impact travel to the festival.

The project, which began in June, is ahead of schedule and within budget, according to the county. It includes roadway and drainage improvements between Riverland Drive and Fleming Road, which officials say will provide significant flooding relief to the area.



Crews have raised Central Park Road by up to two feet along the project corridor and installed three larger drainage pipes equipped with two tide gates and one tidal check valve to block incoming tides above normal high tide levels.

“Together, these measures will prevent future roadway flooding caused by the nearby James Island Creek, provide greater flow capacity, allow continual saltwater exchange through the crossing, and increase stormwater storage upstream,” the county said.

Funding for the project comes from federal grants, state gas tax funds administered by the Charleston Transportation Committee, and county stormwater funds. Completion is expected in February 2026.



## Central Park Road to open weeknights for Festival of Lights amid ongoing drainage project

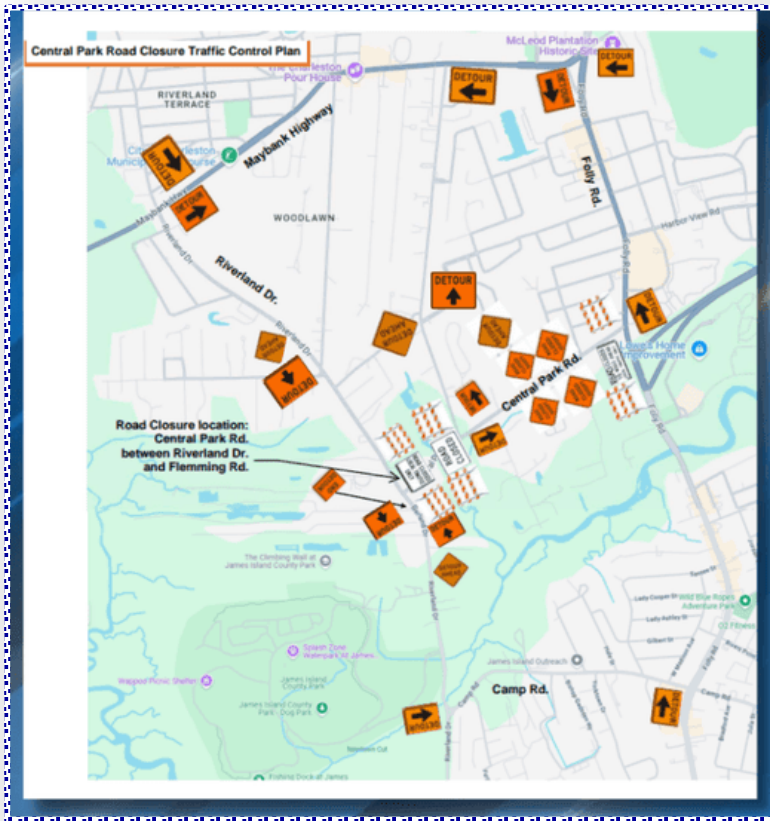
by Abigail Quinn, Fri, November 14, 2025 at 9:41 AM

JAMES ISLAND, S.C. (WCIV) — Central Park Road is set to open Friday to facilitate traffic for the annual Festival of Lights at James Island County Park, amid an ongoing drainage improvement project in the area.

According to officials, the road will open to traffic at 5 p.m. on Nov. 14, and will remain open each evening on weeknights for the duration of the festival. Though the roadway will be open at night, periodic daytime closures may occur, but are not anticipated to affect festival traffic.

The potential closures are related to the Central Park Road Drainage Improvements Project, which began in June. The project consists of a series of roadway and drainage improvements on Central Park Road between Riverland Drive and Fleming Road, which aims to bring significant flooding relief to the area.

Project funding comes from a combination of federal grant funds, state gas tax funds administered by the Charleston Transportation Committee, and county stormwater funds.



The Central Park Road Drainage Improvements Project is set to commence on Monday, prompting a partial road closure on Central Park Road between Riverland Drive and Fleming Road. (Provided)



## Three cadets recognized for selfless and lifesaving actions

November 14, 2025 Athletics Featured News Releases Students

MOUNT PLEASANT, S.C. (WCIV) — Charleston County appears to be moving forward with its current plan for the Highway 41 Corridor Improvement Project, despite the Mount Pleasant Town Council passing a resolution in July opposing the proposal.

When emergencies struck in two very different places — one on The Citadel’s campus, another at a local beach — cadets from The Citadel relied on their training and instincts to save lives.

The three cadets who stepped up were recognized at parade on Friday, Nov. 7, for their extraordinary acts.

Cadet Gary Boone was presented with The Citadel Medal of Valor for risking his own life to save a man drowning in the ocean at the **Isle of Palms County Park** in May.

Cadets Jet Galbreath and Braxton Russell were awarded the Andrew Mazur Medal after working together to save a campus employee suffering a medical emergency in September.

The Citadel President Gen. Glenn M. Walters, USMC (Ret.), ’79, presented the awards.

Boone, a junior majoring in Criminal Justice, was working as a lifeguard supervisor for Charleston County’s Ocean Rescue Division when he saw a man who appeared to be drowning. Boone immediately swam out about 30 yards and brought the unconscious man back to shore, where he and his team checked the man’s vitals and found no pulse. They began CPR and rescue breathing, and continued until EMS arrived on scene to provide additional care.

“Through my cadet career, I’ve been in leadership positions both sophomore and junior year,” said Boone. “The main take-away that I learned from The Citadel that I especially applied that day was just leadership through compassion.”

Earlier that same morning, just by coincidence, Boone had led a training session with the lifeguard team to prepare for a similar situation.

“For two of the guards, it was their very first day on the job, and they excelled in their role. They knew what they were doing, because we just train, train, train on that,” said Boone. “So when we officially handed him off to EMS, we had everything in order so EMS can immediately hop in and start doing their job.”





### **lifesaving actions** — continued

Though the lifeguards encountered challenges during the rescue, in the end, Boone says it was the training and his team's coordination that made the difference that day.

"Everything was as we've trained, as we've drilled, and fortunately he was able to make a full recovery," he said.

On campus earlier this semester, Galbreath and Russell — both on The Citadel wrestling team — were nearby when a campus employee began to suffer a medical emergency. When the man suddenly fell to the ground, Russell was able to prevent him from hitting his head on the way down and Galbreath, who learned CPR in high school, ran over to help.

"I think that's just a part of our identity, and what we do every day is doing the right thing," said Galbreath. "If you see something, take action, do it right and handle the situation. Don't wait for someone."

As Galbreath was giving the man CPR and directing other cadets to call 911, Russell ran to get a defibrillator and continued to help Galbreath until an ambulance arrived.

"Jet and I are on the same team and we're friends, so we work well together," said Russell. "And I thought, if Jet knows CPR and how to do this, then I'm going to assist him in any way I can. That was really the only thought I had."

Both Galbreath and Russell said that, after all their training and preparation, the moment was just like when the whistle blows before a wrestling competition.

"We had a duty to another human. We had a duty to another life. We respected life. We respected the value of what was going on in that situation. And hopefully that brings honor on the school, on our team, on our families, on people we're around. But at the same time, that's not why we did it," said Galbreath.

They both say there was a job to do, and their rigorous training as wrestlers had instilled a proactive and resilient mindset.

"Our training in cadet life and the way that we've been raised, it's kind of all paid off and it's just a great honor to all of our friends and our family and the people that have mentored us and brought us up to be the men that we are today," said Russell.

Galbreath is a junior Political Science major from Georgia pursuing a contract with the National Guard. Russell, a sophomore Criminal Justice major from Indiana, is pursuing a career in the Army.

To be awarded The Citadel Medal of Valor, a cadet must distinguish him or herself by acts of heroism, resulting in an accomplishment so exceptional or outstanding as to set the cadet apart and involve acceptance of danger or extraordinary responsibilities.

The Andrew Mazur Citizenship Medal may be presented to any cadets who distinguish themselves by an act of outstanding citizenship that goes far beyond the normal expectations of cadet's daily life.



## Survey of South Carolinians Reveals the Three Sportiest Public Parks in the State

Nov 17, 2025 02:07PM • By August Spencer



Across South Carolina, public parks turn into makeshift stadiums where families, friends, and total strangers gather for the love of sport. To find out where that spirit shines brightest, SportsBookReview.com, a leading sports review site, surveyed 3,002 people to reveal the sportiest public parks in the Palmetto State. These are the green spaces where baseball diamonds, soccer fields, and running trails are more than amenities – they’re part of everyday life.

The top three in South Carolina, as described by officials with SportsBookReview.com, were:

### **No. 1. Falls Park on the Reedy - Greenville**

Nestled in downtown Greenville, Falls Park on the Reedy is more a scenic urban park than a traditional sports complex. Its walking trails, stone bridges, and river overlook attract joggers, walkers, and casual cyclists. While the park has open lawns, organized sports are minimal; informal activities like yoga, frisbee, and pickup games occasionally occur. On weekends, locals enjoy strolling, sightseeing, and light recreational activity, blending natural beauty with gentle outdoor movement.

### **No. 2. James Island County Park - Charleston**

James Island County Park is a Charleston favorite for locals who enjoy both structured and casual play. The park includes a skate park, a spray ground, picnic shelters, and a fitness trail around the lake. Walking and biking paths attract joggers and cyclists year-round. On sunny weekends, families toss frisbees, paddle canoes, or cheer on pickup games, making it a lively community hub where recreation and outdoor enjoyment meet.

### **No. 3. Palmetto Islands County Park - Mount Pleasant**

Palmetto Islands County Park combines nature, adventure, and recreational facilities. The park has multi-use trails for hiking and cycling, open lawns for casual sports, a disc golf course, kayak and paddleboard access in the marshes, and an aerial adventure park. Families frequently participate in informal games, outdoor adventure activities, and fitness routines. Weekend visits are lively, offering a mix of active play and nature exploration.

Elsewhere across the nation, other favorites described by officials with SportsBookReview.com were:

### **Central Park – Manhattan, New York**

Central Park’s Great Lawn, Heckscher Playground, and adjacent sports areas host baseball diamonds, soccer fields, cricket pitches, basketball courts, and running tracks, all in the heart of Manhattan. Weekends start with early youth and adult league matches, shift into afternoon pick-up games on open fields, and extend into evening recreational play while families picnic, stroll, or cycle along the park’s paths – demonstrating a seamless mix of city-scale sport and casual community recreation.



## Public Parks — continued

### California Oaks Sports Park – Murrieta, California

In Murrieta (Riverside County), California, Oaks Sports Park spreads across open grounds where formal sports and relaxed recreation sit side by side. With lit baseball/softball fields, basketball and tennis courts, a skate park, playgrounds, and green picnic lawns, it supports both league play and laid-back fun. Weekends might start with organized games in the morning and shift into afternoons of families picnicking, friends tossing a ball, or simple lawn time under the oaks. The balance of structure and spontaneity gives the park a welcoming, inclusive energy that suits the community.

### Publix Sports Park – Panama City Beach, Florida

Just off Highway 98 in Panama City Beach, Publix Sports Park combines large-scale tournament-capable fields with a relaxed seaside vibe setting. Its roughly 160,200-acre venue features built-for-sport infrastructure: multiple AstroTurf multipurpose fields, and advanced lighting systems. Weekends here often pulse with activity: youth tournaments in the morning, followed by time for casual games in the afternoon, and families moving between fields and the nearby beach. The park's mix of turf and grass, open space, and pavilions makes it a go-to spot where organized competition and more spontaneous play coexist seamlessly.

### Loveland Sports Park – Loveland, Colorado

Just north of central Loveland, Colorado, Loveland Sports Park brings together broad athletic fields, courts, and recreation zones set in a character-rich, semirural backdrop. With seven full-sized grass fields for soccer (plus a synthetic turf championship field), basketball and sand volleyball courts, playgrounds, a spray park and picnic shelters, the complex serves both competitive sports and relaxed family recreation.

Early mornings may be filled with league or tournament play, while the lawns, shelters, and playgrounds allow families and friends to enjoy the space as the day unfolds. Though the fields are primarily reservation-based, the mix of sport, open space, and community amenities creates a welcoming, inclusive atmosphere for active weekends in Northern Colorado.

### Indianapolis World Sports Park – Indianapolis, Indiana

Tucked on the city's east side, Indianapolis World Sports Park brings an international flair to local play. Its open fields welcome everything from soccer and cricket to rugby and casual weekend kickabouts. Early games draw organized teams, but by midday the atmosphere loosens – families watching from the sidelines, kids joining in around the edges, and small groups setting up for informal scrimmages as the sun drops. It's urban sport at its most inclusive and community-driven.

### Centennial Park, Nashville, Tennessee

Centennial Park, adjacent to downtown Nashville, is a hub for weekend activity. Its open lawns host casual soccer, volleyball, frisbee, and sometimes informal football games. Runners and cyclists use the outer paved loop, while fitness enthusiasts gather for yoga, tai chi, or bootcamp classes. The Parthenon replica provides a striking backdrop for both organized and casual gatherings. Playgrounds and walking trails further support family-friendly activity, making the park a central space for locals to move, socialize, and enjoy the city's weekend energy.



Home » Latest Travel News of United States »

## Charleston and Bluffton, The Best Thanksgiving Destinations You Need to Experience in South Carolina

Published on November 19, 2025



Thanksgiving has long been a holiday to gather with family, enjoy delicious meals, and embrace the spirit of togetherness. However, in recent years, more people have begun to look beyond the traditional family dinner and are instead seeking out unique ways to celebrate the holiday. Charleston, South Carolina, has become a favorite destination for those wanting to experience Thanksgiving in a place known for its rich history, coastal charm, and Southern hospitality. This city offers a perfect blend of festive atmosphere and relaxation, making it an ideal choice for a Thanksgiving getaway.

Unlike the bustling summer months when tourists flock to its beaches, Charleston presents a quieter, more serene environment during Thanksgiving. The crisp fall air, combined with the beauty of the coastline, creates an atmosphere that allows visitors to unwind and immerse themselves in the holiday spirit. Charleston transforms into an ideal place for travelers seeking a peaceful yet festive retreat.

### A Unique Thanksgiving Tradition: The Turkey Day Run & Gobble Wobble

One of the key events in Charleston during Thanksgiving is the Turkey Day Run & Gobble Wobble, a beloved annual tradition that draws locals and visitors alike. This certified 5k race takes participants through the historic streets of downtown Charleston, offering them the chance to explore the city's beautiful architecture and vibrant culture while staying active. The race winds its way toward the iconic peninsula, giving participants a chance to soak in the unique atmosphere of Charleston before indulging in their holiday meal.

After completing the race, many participants head to some of the city's renowned restaurants to enjoy a festive Thanksgiving meal. Popular dining spots like Halls Chophouse or the outdoor courtyard at 82 Queen provide the perfect setting for a Southern-inspired feast. Known for their warm hospitality and delicious food, these restaurants offer a memorable holiday dining experience. Whether indulging in classic dishes or trying regional specialties, guests can enjoy the best of Southern cuisine in a welcoming atmosphere.

### Charleston's Holiday Cheer: Sparkling Lights and Scenic Views

As the day comes to a close, Charleston continues to enchant with its holiday offerings. One of the most popular attractions is the annual light display at **James Island County Park**, where the park is transformed into a magical winter wonderland. The sparkling lights create a festive atmosphere, making it a must-see event for many families. As visitors stroll through the park, they can take in the beautiful holiday decorations while creating lasting memories.



## Destinations — continued

For those looking for a more peaceful end to their day, Pitt Street Bridge offers a serene spot to relax and enjoy the breathtaking sunset over the water. This quiet, picturesque location provides an ideal setting for reflection, allowing visitors to wind down from the excitement of the day while taking in the natural beauty that Charleston has to offer.

Charleston is the perfect blend of Southern charm, historical allure, and holiday cheer, making it an ideal destination for anyone looking to celebrate Thanksgiving in a unique and memorable way.

### **Bluffton: A Peaceful Thanksgiving Retreat**

Just a short drive from Charleston, the charming town of Bluffton offers a quieter alternative for those looking for a more laid-back Thanksgiving experience. Situated between Hilton Head Island and Savannah, Georgia, Bluffton is known for its natural beauty and relaxed atmosphere, making it an ideal destination for anyone wanting to escape the hustle and bustle of daily life and enjoy a peaceful holiday surrounded by scenic landscapes.

At the Montage Palmetto Bluff resort, guests can indulge in a variety of outdoor activities that highlight the essence of Southern hospitality. Whether it's taking a leisurely bike ride around the picturesque property, gathering around a nightly s'more pit, or enjoying oysters roasted by the river, there are countless ways to unwind and enjoy the natural beauty of the area. The resort provides the perfect blend of luxury and relaxation, offering visitors a chance to reconnect with nature while experiencing the warmth of the South.

### **The Growing Trend of Thanksgiving Travel**

Thanksgiving travel has become an increasingly popular

tradition, with more and more people choosing to spend the holiday in new and exciting destinations. Rather than staying home for the typical family meal, many travelers are opting to explore fresh locations, seeking new experiences and memories to create. Charleston and Bluffton are prime examples of this shift, with both cities seeing a noticeable rise in visitors during the Thanksgiving season.

This shift in travel habits highlights the growing appeal of destinations that offer a unique combination of culture, history, and Southern hospitality. As travelers seek to escape their everyday routines and embrace the holiday in a different way, places like Charleston and Bluffton are becoming top choices for Thanksgiving getaways, providing an unforgettable holiday experience while supporting the local economy.

### **Thanksgiving Travel: A New Tradition**

Thanksgiving is no longer just about staying home and hosting family meals. More and more people are using the holiday as an opportunity to travel, whether it's for relaxation, adventure, or cultural immersion. The shift toward Thanksgiving travel is reshaping the way people celebrate the holiday, with many now looking for new destinations to explore. Charleston and Bluffton have become leaders in this trend, offering travelers a chance to enjoy a different kind of Thanksgiving celebration.

Both Charleston and Bluffton have embraced this growing interest in Thanksgiving getaways by creating customized travel experiences designed to meet the needs of modern-day travelers. From Thanksgiving-specific events and outdoor activities to cultural experiences, these destinations are offering something for everyone, making them ideal spots for those seeking a new way to celebrate the holiday.

*We were so excited to be able to walk around Caw Caw after dark for a new perspective. We spotted a creature, heard owls, and generally enjoyed this class, especially our naturalist!*

### **Benefits of Bats Participant – Caw Caw Interpretive Center**

*My boyfriend and I really love the Charleston County Park race series! We ran the lighthouse run at Folly in February, and decided to do this one. It was a lot of fun— good crowd, well organized, and the chili was good, too.*

### **Chili 5K Participant – Laurel Hill County Park**

*We love this race. Love the swag, love the course and love the staff. I do this race with my son. Seeing the last runner come through the finish was such a great moment to share with him.*

### **Chili 5K Participant – Laurel Hill County Park**

*We spend a few days in Isle of Palms every October and we make sure to always include a bird walk at Caw Caw. The guide was amazing!! We saw so much and she knew so much. What a wonderful program!*

### **Early Morning Bird Walk Participant – Caw Caw Interpretive Center**

*Great experience with knowledgeable, professional staff!  
Our kids had a great time and learned a great deal as well.*

### **Teacher from Dawn of Freedom Custom Program – McLeod Plantation Historic Site**

*Our residents loved the tour of Caw Caw. They raved about the alligator with its babies. They also love to be in the natural setting of Charleston, just an overall wonderful Photo Outing. Keep doing what you are doing for the community and its residents.*

### **Custom Nature Tour Participants from Delancey Street – Caw Caw Interpretive Center**

## Charleston County Parks Foundation

Every year the Charleston County Parks Foundation encourages its supporters to donate on Giving Tuesday - December 2, 2025. Giving Tuesday is a global initiative that encourages people and organizations to donate their time and money to charitable causes on the Tuesday following Thanksgiving in the United States. The image for this year's campaign was designed by Rachel Willson, CCPRC's Marketing Brand Coordinator. It features a few happy dogs at Wannamaker County Park's dog park! The same image will be used on the Foundation's annual holiday card mailed to Gold Pass holders and Foundation supporters. Please remind your friends and family to remember the Foundation and its mission to empower all people to experience the Charleston County Parks and programs!



So far this holiday season, the Charleston County Parks Foundation has provided Holiday Festival of Lights passes to groups and families including Pattison's Academy, Charleston Promise Neighborhood, and the Kid's Pickle Foundation to name a few. The Foundation remains a vital resource for non-profit groups and individuals needing access to our parks and programs. More information and public funding request forms can be found at [charlestoncountyparksfoundation.org](http://charlestoncountyparksfoundation.org).

### Community Recreation

For over a quarter of a century now, local area schools have participated in the HFOL Giant Greeting Card competition. Applications go out mid-August and we supply each school a 4x8 foot piece of plywood to let the magic begin! Completed designs were returned on October 31. They were judged by our campground hosts and the winners were announced at our HFOL Opening Night Ceremony on November 14.

There are 3 divisions: elementary, middle and high school. Each division receives a 1st, 2nd and 3rd place cash prize, along with a plaque. There are 44 giant greeting cards displayed at this year’s Holiday Festival of Lights at James Island County Park.



## Festivals and Events

### Harvest Festival

Harvest Festival took place on November 1, 2025, from 11:00am-5:00pm. Guests of all ages came out to Johns Island County Park to enjoy a beautiful day with live bluegrass music, a crafters market, and enjoyed local food truck fare. Families also enjoyed hayrides and participating in a variety of kids' activities that featured crafts, bubbles, games, and pumpkin painting. Nearly 3,000 people came out to enjoy the event.



## Fitness and Wellness

### Chili 10K/5K

On November 1, we had a beautiful day for our Chili 5K/10K at Laurel Hill County Park. Over 100 participants came out to enjoy the fall weather, scenic trails, and a fun, energetic race atmosphere. After crossing the finish line, runners were treated to a warm cup of chili — a perfect way to wrap up the morning.



## Fitness and Wellness

### Trick Treat and Trail

On October 25, we enjoyed a gorgeous morning for our Trick Treat and Trail Fun Run and Festival at Wannamaker County Park. We were grateful for the support of Kirar Health, Renewal by Andersen, SC BLUE, Charleston Animal Society, LeafGuard, Foundation Chiro, Epiphany, The Foot Store, and Crews Subaru. We also welcomed a variety of onsite vendors, including Donut Daddy, Miracles' Tasty Express, Sweet But Not So Sweet, and King of Pops, along with a face painter, balloon artist, and DJ. In all, we were thrilled to celebrate with more than 500 participants.



### Folly Beach Fishing Pier

Folly Beach Fishing Pier recently reached the end of the 2025 Cast Off Fishing Tournament season! Between the four tournaments, they had a total of 256 anglers come out to compete. A lot of great fish were caught this season, and plenty of people left with big smiles and fun prizes. Thank you to everyone who helped make this tournament season great!



### Holiday Festival of Lights

As the opening of the 2025 Holiday Festival of Lights is fast approaching, staff wanted to take a moment to recognize and say thank you to the amazing team of volunteers! They are an immense help to the Food and Retail team throughout the show but are essential during gift shop setup. Thank you to Kristen Watson and Shannon Critzman for helping coordinate all of their shifts. Everyone is super appreciative of their help!

HFOL Fun Fact #1 - We sold over 45,000 items in the gift shops during the 2024 show. Ninety nine % of these items were either tagged, unboxed, etc. by our volunteer crew.

Pictured, they helped attach hangers to the Teddy Mountain order, so kids have plenty of stuffed animals to purchase in the Reindeer Workshop tent.

HFOL Fun Fact #2 - We sold over 5,000 stuffies in the Reindeer Workshop tent during the 2024 season. That translated to the volunteers going through almost 3 pallets of product to date to get ready for this year's show.

To all our volunteers, THANK YOU and Happy HFOL'ing!



### Interpretation

The Education and Natural History teams spent time in October tagging Monarch butterflies for the citizen science program out of the University of Kansas, “Monarch Watch”. The program was founded in 1992 and encourages volunteers across the country to briefly capture and tag butterflies so scientists can continue to learn about their migration and develop conservation programs to promote their survival. The team tagged close to 50 butterflies and implemented several programs that invited participants to learn about the animal and assist in tagging efforts.

The Cultural History team at McLeod Plantation Historic Site welcomed groups and visitors from across the country in October. As a result, attendance was up for the month. Some of the groups that visited the site included Harvard University affiliated scholars, students from R.B. Stall High School, and senior citizen tour groups. The students from R.B. Stall received support from the Charleston County Parks Foundation that allowed them to visit the site at no cost to the school or students which is part of the larger effort to make parks accessible to all.



## Isle of Palms

An Isle of Palms County Park visitor, Brandon, got to take advantage of the Waymaker Chair on its final day before it hibernates until spring! It was no surprise that Brandon made new friends quite fast: Nick Salleroli and Charlie Bobo. Brandon participated in the Lowvelo bike race and his fans at IOPCP cheered him on!



## Maintenance Equipment Rodeo

Thank you to all the staff members who participated in this year's Equipment Rodeo! Equipment Rodeo 2025 was held on Wednesday, November 19th at Johns Island County Park. The rodeo is an opportunity for grounds maintenance employees to gain hands-on experience with various landscape equipment in a relaxed training environment.

Thank you to the members of the Green Team Committee for organizing another successful rodeo! A special thanks goes out to Read Bradford and Pete Brouwer for their presentation on the AI/Robot Mower; Josh Blackstone, Pam Matthews and Kristy Nixon for stepping in to instruct three of our eight learning stations; Ande Oliver and the recreation staff for setting up the archery competition; and Bryant Tezza for preparing lunch for the group.



This year's first place winners for the archery competition include:

- ◆ First Place Team - Team #3 (Kyle Morgan, William Begley and Chris Wheeler)
- ◆ First Place Individual (...and NEW CHAMPION!) - Hayne Von Kolnitz



## Outdoor Recreation

### James Island Elementary Literacy Night

On November 6, we had the opportunity to represent CCPRC and the Community Relations Bureau at James Island Elementary's Literacy Night. The theme was "Camp Out" which was a perfect fit for our Outdoor Adventure team. We were asked to assist with one of the exhibits, called "Camp Beacon". Our Outdoor Youth Team provided age-appropriate literacy activities, campsite games, and other decorations to give it that "camp out" feel. In doing so we met a lot of kids and parents and were able to promote the Holiday Festival of Lights, Summer Camp Programs, Bike and Boards, and other youth related programs. We had a blast and we look forward to helping out with the next one!



## Outdoor Recreation

### LEAP

#### (Leadership through Environmental Adventures Program)

Through support from the Charleston County Park Foundation and Community Recreation, the Outdoor Adventure team returned for another round of LEAP at Baptist Hill Middle High School. During this five-day program from October 20-25, students immersed themselves in climbing the portable rock wall and flinging some arrows on the archery range. While some tested their skills at knot tying, others found their new weekend hobby: disc golf. Both staff and students were sad to see the conclusion of this season's program, and they are all looking forward to its return in the spring.



## Outdoor Recreation

### Cairo Middle School Outdoor Adventures

From November 5–13, the James Island County Park Challenge Course had the pleasure of hosting all 310 seventh graders from Cairo Middle School across seven full days of programs. During their time with us, the students learned how to solve problems, work together, and build their individual strength and confidence. In return, they taught us a little more about 6–7. We're calling that a win-win!



## **NOVEMBER SPONSORED EVENTS:**

- **Harvest Festival**
  - \* Sponsored by: Renewal by Andersen, LeafGuard, Charleston Animal Society, Passanante's Home Food Service, Leafilter, Contract Exteriors, Joel Gott Wines, 95.9 and Live for Wellness
- **Chili Trail Run**
  - \* Sponsored by: Renewal by Andersen, Stretchzone and Foot Store
- **HFOL Fun Run**
  - \* Presented by: Boeing and South Carolina Federal Credit Union
  - \* Supported by: Renewal by Andersen, Foundation Family Chiropractic and Epiphany Dermatology
- **Holiday Festival of Lights**
  - \* Presented by: Boeing and South Carolina Federal Credit Union
  - \* Supported by: 110 companies



---

**Renewal by Andersen  
Harvest Festival**

---



---

**Epiphany Dermatology  
HFOL Fun Run**

---

# Recreation Stats & Attendance

## CCPRC ATTENDANCE REPORT

**OCTOBER 2025 VS OCTOBER 2024**

ATTENDANCE FOR PROGRAMS												
CAMP	CHALLENGE COURSE	CLIMBING WALL	COMMUNITY RECREATION	CULTURAL HISTORY	EDUCATION	FESTIVALS AND EVENTS	HEALTH AND WELLNESS	INCLUSIVE RECREATION	NATURAL HISTORY	OUTDOOR ADVENTURE	TOTAL	
2025 Programs Offered	0	354	1,348	5,189	3,281	852	2,415	901	0	1,077	104	15,521
2024 Attendance	0	454	2,057	3,228	3,216	755	4,562	966	0	827	35	16,120
Variance	0	-100	-709	1,961	65	97	-2,147	-85	0	250	69	-599

PUBLIC PROGRAMS											
CAMP	CHALLENGE COURSE	CLIMBING WALL	COMMUNITY RECREATION	CULTURAL HISTORY	EDUCATION	FESTIVALS AND EVENTS	HEALTH AND WELLNESS	INCLUSIVE RECREATION	NATURAL HISTORY	OUTDOOR ADVENTURE	TOTAL
2025 Programs Offered	0	0	6	180	4	3	5	0	23	6	213
2025 Programs Implemented	0	0	4	153	3	2	5	0	19	2	194
% Implemented 2025	0%	0%	67%	96%	75%	67%	100%	0%	83%	33%	91%
2024 Programs Offered	0	0	8	150	3	3	5	0	17	7	204
2024 Programs Implemented	0	0	2	150	3	3	5	0	15	6	195
% Implemented 2024	0%	0%	25%	100%	100%	100%	100%	0%	88%	86%	96%

CUSTOM PROGRAMS										
	CHALLENGE COURSE	CLIMBING WALL		CULTURAL HISTORY	EDUCATION		NATURAL HISTORY	OUTDOOR ADVENTURE		TOTAL
2025 Programs Implemented	15	4		29	36		5	0		91
2024 Programs Implemented	12	5		12	32		5	0		88
Variance	3	-1		17	4		0	0		23

\*Attendance for the Climbing Wall reflects daily facility attendance as well as program attendance (when programs are offered).  
 \*\*Some departments primarily offer Custom Programs, while others departments rarely offer Custom Programs because of differences in the audiences they serve.

# Parks Stats & Attendance

## Total Facility Attendance 25-26 vs. 24-25

	PICP	JICP	WCP	CAW	JoICP	FB Pier	MP Pier	BWP	FBCP	IOP	Blow	Laurel Hill	Old Towne	McLeod	LHP	SK8	WCAC	Stono River
YTD 2324 Attendance	47,672	173,448	185,907	5,191	22,296	165,041	94,650	48,056	80,409	109,738	745	445	0	9,699	38,000	5,115	6,375	5,629
YTD 2425 Attendance	49,433	136,624	153,621	3,800	16,964	199,720	95,445	38,042	54,354	86,198	1166	11,089	0	9,268	27,436	6,142	5,765	13,766
YTD 2526 Attendance	43,842	122,283	145,331	4,748	14,315	241,433	91,698	38,060	56,700	90,055	444	13,144	0	8,082	31,049	4,560	5,285	7,172
Variance	-5,591	-14,341	-8,290	948	-2,649	41,713	-3,747	18	2,346	3,857	-722	2,055	0	-1,186	3,613	-1,582	-480	-6,594
%	-11%	-10%	-5%	25%	-16%	21%	-4%	0%	4%	4%	-62%	19%	---	-13%	13%	-26%	-8%	-48%

all facilities continued

	SI	SZ	WW	TOTAL
YTD 2324 Attendance	15,968	42,433	108,933	167,334
YTD 2425 Attendance	11,063	26,670	83,535	121,268
YTD 2526 Attendance	11,521	27,056	80,220	118,797
Variance	458	386	-3,315	-2,471
%	4%	1%	-4%	-2%

	BWP	FBCP	IOP	TOTAL
YTD 2324 Attendance	19,346	33,246	42,244	94,836
YTD 2425 Attendance	17,292	27,177	35,916	80,385
YTD 2526 Attendance	17,300	28,350	37,523	83,173
Variance	8	1,173	1,607	2,788
%	0%	4%	4%	3%

	W/ North Trail*	Meggett*	TOTAL
YTD 2324 Attendance	339	44	998,799
YTD 2425 Attendance	7,147	424	916,405
YTD 2526 Attendance	7,114	100	925,415
Variance	-33	-324	9,011
%	0%	-76%	1%

	Campsites	Cottages	Marina
YTD 2324 Attendance	79%	61%	94%
YTD 2425 Attendance	70%	55%	92%
YTD 2526 Attendance	64%	64%	94%

# Human Resources

**Diversity Mission Statement:** The Charleston County Park and Recreation Commission will provide high quality park facilities, programs, and services to the ever-changing community we serve by recruiting, training, and retaining a qualified and diverse staff.



Above : Volunteers haul after cleaning up at Cherry Point boat landing

Upper right : Volunteers at Mini-Lights prepping for the Holiday Festival of Lights!

Lower right : Volunteers helping at Latin Festival

## Current Staff Statistics: NOVEMBER EEO Information

	FULL TIME EMPLOYEES	PART TIME EMPLOYEES	TOTAL OF ALL EMPLOYEES
<b>Number of Employees</b>	184	774	958
<b>White</b>	155	611	80%
<b>Hispanic</b>	7	28	3.7%
<b>African American</b>	15	104	12.4%
<b>Asian</b>	2	10	1.3%
<b>American Indian</b>	1	9	1.1%
<b>Pacific Islander</b>	0	2	<1%
<b>Two or more Races</b>	6	21	2.8%
<b>Other or Prefer not to Provide</b>	2	31	3.4%
<b>Male</b>	99	315	43.2%
<b>Female</b>	83	447	55.3%
<b>Prefer not to Provide</b>	2	12	1.5%

# Human Resources

## Volunteer Coordinator Report October 2024 VS October 2025 reported in November 2025

Activity Category	Hours	Volunteers
Call Me Handy!!!!@ Johns Island County Park/Mullet Hall Equestrian	20	1
McLeod Plantation Interpretive Host	47	4
Mini-Lights	70	14
West County Aquatic Center Fall Family Festival	7	2
Lowcountry Trail Half Marathon	50	9
KultureCity Training	2	2
Trick, Treat and Trail	79	16
Latin American Festival	228	33
SC Alcohol Server	3	1
Holiday Festival of Lights Mailing Help at	62	15
Holiday Festival of Lights Gift	66	16
Meggett County Park	3	1
Master Naturalist Docent at	36	6
<b>Total Volunteer Hours:</b>		
	<b>673</b>	
<b>Current Fiscal Year to Date Volunteer Hours:</b>		
	<b>2,185.00</b>	
<b>Previous Fiscal Year to Date Volunteer Hours:</b>		
	<b>1,890.67</b>	
<b>Current vs Previous Fiscal Year to Date Volunteer Hours:</b>		
	<b>294.33</b>	
<b>Value of Volunteer Hours</b>		
<b>Total Volunteer Full-time Employee Equivalent:</b>		
	<b>4.14</b>	
<b>Current Fiscal Year to Date Volunteer Full-time Employee Equivalent:</b>		
	<b>13.45</b>	
<b>Previous Fiscal Year to Date Volunteer Full-time Employee Equivalent:</b>		
	<b>11.64</b>	
<b>Current vs Previous Fiscal YTD Volunteer Full-time Employee Equivalent:</b>		
	<b>1.81</b>	
<b>Value of Volunteer Hours Formula:</b>		
<b>Monthly Employee Cost Savings</b>		
<b>Total Volunteer Hours Value:</b>		
	<b>\$16,572.42</b>	
<b>Current Fiscal Year to Date Volunteer Hours Value:</b>		
	<b>\$54,077.53</b>	
<b>Previous Fiscal Year to Date Volunteer Hours: Value</b>		
	<b>\$46,594.92</b>	
<b>Current vs Previous Fiscal Year to Date Volunteer Hours Value:</b>		
	<b>\$7,482.61</b>	
<b>Monthly Employee Cost Savings Formula:</b>		
$\text{\$4003 (monthly cost with salary and benefits for a specialist level full time employee)} \times \text{\# of full-time employee equivalent} = \text{Monthly Employee Cost Savings}$		

# Digital Marketing Summary

## EMAIL MARKETING

Sends	Opens	Clicks
602,802	340,458	9,567


## SOCIAL MEDIA

Facebook	Instagram	X (Twitter)
Reach: 1,053,042	Followers: 43,040	Followers: 11,347
Content Interaction: 5,890	Engagement: 3,615	Impressions: 4,729

### Organic Social Media Post Samples

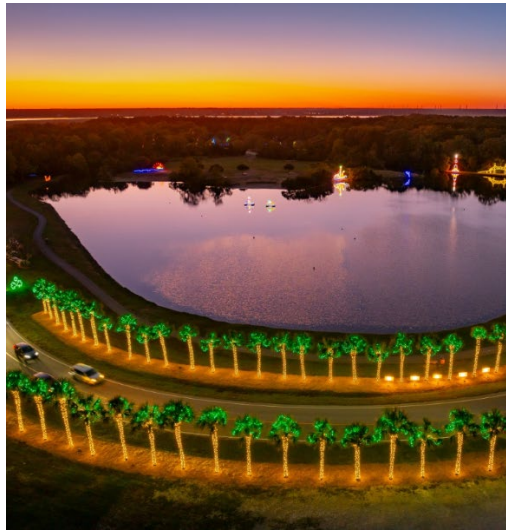
**Charleston County Parks**  
Published by Hootsuite · October 30 at 10:02 AM · 🌐

Yes, Roseate Spoonbills were spotted at James Island County Park last week. No, we don't have their upcoming tour schedule.



See insights and ads Boost post

👍❤️ 213     6 🗨️ 6 ➦



**charlestoncountyparks**

The wait is almost over! 🎉🌟

The Holiday Festival of Lights starts in exactly one month! Advance tickets are now on sale through the link in our bio. 3w

**changing\_tides\_team** We love the JICP lights! 2w Reply

**alohacharleston** A staple every year! When is opening day?? 3w Reply

— View replies (2)

**save.the.light** You can view the Morris Island Lighthouse in this photo and during the Festival of Lights on the far side of the lake. You can view her all year round at Charleston County's Lighthouse, Island Maritime Museum on Edisto Beach! 3w

View insights Boost post

👍❤️🗨️


👤 Liked by sk8charleston and 274 others  
October 14

😊 Add a comment...

**Charleston County Parks**  
Published by Hootsuite · October 21 at 10:00 AM · 🌐


The Trick, Treat, and Trail Family Fun Run is back where costumes meet the crisp fall air! 🎃👻

W... See more



See insights and ads Boost post

👍❤️ 58     7 🗨️ 21 ➦



**charlestoncountyparks**  
Russell Dickerson · Good Day To Have A Great Day

We made some BIG upgrades to the Big Toy playground at Palmetto Islands County Park in the past month! We've got a new play structure for ages 2-5, new swings, and a new playground surface area! 2w

**charlestonmomsnetwork** Can't wait to check it out! 🎉👍 2w Reply

**peachpalette** 🍑🍑🍑🍑 2w Reply

**kidsgardencharleston** This looks great! 2w Reply

View insights Boost reel

👍❤️🗨️

👤 Liked by littlesinthelowcountry and 364 others  
October 18

😊 Add a comment... Post

## Park & Program Services

### INCOMING CALLS

Phone Calls
2,841

Incoming Call Topics	Total
Waterpark/HFoL	348
Camp	2
Passes	146
Program Registration	56
Reservations	220
General Information	335
Campground & Cottages	443
C&C Unavailable Dates	159
Festivals & Events	46
Other	48
Wrong Number	303

### Program Registration & Reservations

Enrollments	Memberships	Facility Reservations	Campground Reservations
1,271	1,057	146	809

## Old Towne Creek County Park—Project Update

Road frontage work continues along Old Towne Road (Highway 171). Work items include removal of the old standard 5 foot sidewalk and replacing it with a new 10 foot wide multi-use concrete pathway; paving of the new vehicular park entrance road, and decorative wood fencing. A deceleration turning lane for road safety will be paved soon. The existing Dominion transmission line will stay, but Dominion has plans to upgrade with fewer and taller power poles in the future. Inside the park, near the Welcome Center and Paddock Pavillion, grading work is ongoing to shape the large rain garden area and associated path network.



---

*Turning lane graded and ready for asphalt*

---



---

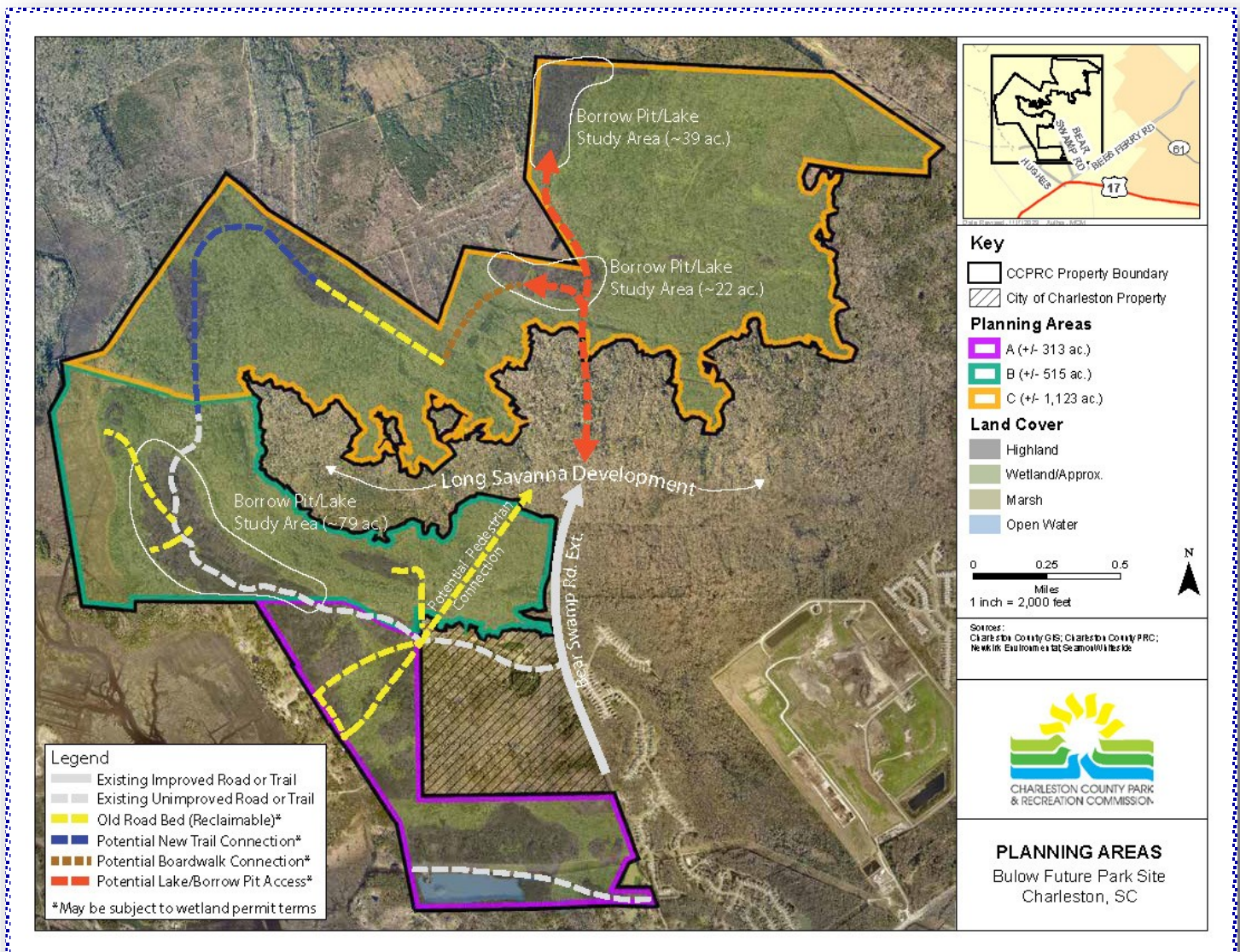
*Top: Entrance road asphalt paving  
Bottom: Rain Garden paths grading*

---

## Bulow Future Park Site—Preliminary Lake Design & Master Planning RFP

In coordination with CCPRC Procurement, Planning & Development has posted a Request for Proposals (RFP) for preliminary master planning and lake design at the future “Bulow County Park” in West Ashley (name subject to change). At the time this property was purchased in 2009, CCPRC and the Long Savannah developers had executed a “Borrow Pit Agreement”, through which the future development would have access to CCPRC land for fill dirt. Providing the future development access to fill dirt translated to lower land acquisition costs for CCPRC.

In this initial planning effort for the property, consultants will study: (1) how the property may accommodate potential future park uses, (2) identify the locations of up to three lakes/borrow pits totaling up to 50 acres, and (3) engineering design and permitting for the lakes, which will be for construction by Long Savannah developers. No public engagement is anticipated during this preliminary land use planning process, and more detailed master planning will not occur until funding is allocated for park development.



Property map of Future park showing lake study areas

## Agencywide—Waterpark Electrical Upgrades

The Agency-wide water park electrical upgrades project has resumed with the ending of the summer season and the contractor is making good progress. We have a new completion date of March 1, 2026. Remaining tasks are the Wannamaker splash pad control panels (progress 75%), M1 building (progress 90%) and M2 building (progress 90%). Most of the remaining work will be within Splash Zone at James Island County Park, which started this past October 2025.



*Completed control Panels at Splash Island, PICP*



*Completed control Panels Whirlin' Waters, WCP*

## Headquarters—Building Repairs

Due to age and materials used in original construction of the headquarters building, we are requesting an assessment by engineers. This will determine overall structural integrity and identify specific issues to be addressed.

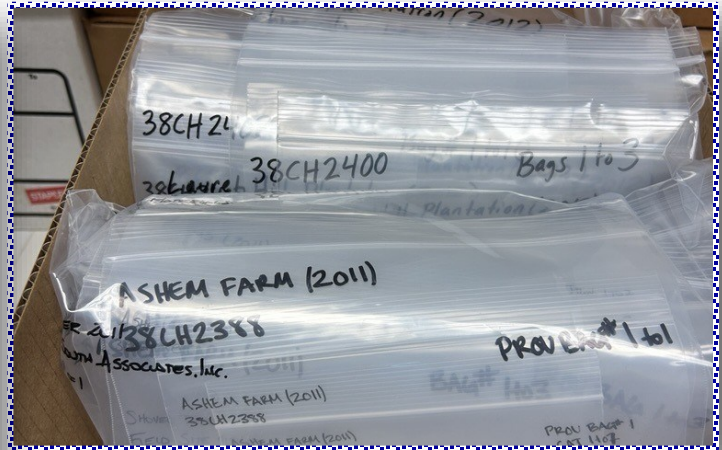


*Wood construction used on Headquarters Building*

## Agencywide—Collections Consolidation

Planning & Development staff have coordinated the consolidation of CCPRC's entire collections of archaeological objects and artifacts (approx. 30 boxes) to Clemson University's Warren Lasch Conservation Center (WLCC) in North Charleston. Home to the CSS H.L. Hunley, WLCC offers museum quality climate controlled facilities, professional conservation and curation services to better protect CCPRC's cultural resources. CCPRC had previously engaged with their staff on the restoration of several objects associated with Old Towne Creek County Park and McLeod Plantation.

**This consolidation project marks the first time the agency's collections will be fully available to CCPRC staff, external partners and cultural resource consultants for future research and interpretation.** Until recently, the agency's collections were located at several institutions including the SC Institute for Archaeology and Anthropology (SCIAA-Columbia, SC), SCDNR (Columbia, SC), Charleston Museum and New South Associates offices. Consolidation of the collections at WLCC is intended to be short-term (several years) and will provide the agency time to identify appropriate long-term storage and care for these important cultural resources.



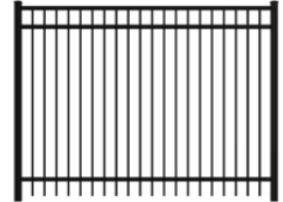
*CCPRC's collections in storage at Clemson University's Warren Lasch Conservation Center in North Charleston*

## Design Review and Project Assistance

The Project Design Manager provides assistance with the planning of some projects and facilitates the agency's internal Design Review Process. The following projects were reviewed and approved since the last Commission Meeting:

### ***James Island County Park—Playground Fence***

This 4' tall fence will allow staff to close the playground to patrons during inclement weather, for maintenance and repairs, and during special events such as the Holiday Festival of Lights. Having controlled entry points will assist parents and guardians in the supervision of their children. There will be two customer entrance gates and one double-wide gate for maintenance.



### ***Schroder Recreation Center — Monument Sign***

A 36'L x 15"H sign panel is to be installed inside the recessed area of the existing RD Shroder Middle School Sign, clearly identifying the building as a recreation center and not the school. Hopefully this will eliminate confusion.

### ***Palmetto Islands County Park—ADA Access to Grills at Shelters***

New grills conforming to ADA requirements for accessibility are to be installed at all three picnic shelters. A concrete pad (connected directly or via concrete pathway to the shelters) is to be placed around each grill providing adequate space to maneuver around all sides.

### ***Laurel Hill County Park—Fence at All American Blvd.***

A 6' tall chain link fence is to be installed along Laurel Hill's property boundary at the Town of Mount Pleasant's new "All American Blvd" extension. This new road, which is within 150' of Laurel Hill's Green Trail is soon to be opened and staff has already observed evidence of trespassing from its shared-use path. The fence will include a double gate for emergency and/or maintenance access from All American Blvd.



