



STATE OF OHIO
EXECUTIVE DEPARTMENT
OFFICE OF THE GOVERNOR
COLUMBUS

November 1929

To the Officers and Members of the
Professional Golf Association of America

Gentlemen:

I wish to add a word of solicitation to other communications you have received from Columbus, urging your Ryder Cup Matches to come to the Capital City in 1931.

Columbus not only is a splendid city for Conventions, with excellent hotel facilities, several good convention halls, and with railroads and paved highways radiating in all directions, but it has an added attraction in being the seat of the State Government. You will be welcome visitors at the State House, one of the distinctive buildings of its kind in the country, and at all the State Buildings, including Institutions and the Ohio State University.

You will feel at home in Columbus and will profit by having come here.

Very sincerely yours,

Myers Y. Cooper
Myers Y. Cooper
GOVERNOR

WHERE PLANE AND TRAIN MEET



CITY OF COLUMBUS
OHIO

November 1929

To the Officers and Members of the
Professional Golf Association of America

Gentlemen:

The friendly hospitality of Columbus, reflected and magnified thru the Chamber of Commerce, representing the civic, industrial and commercial interests of this city, extends a hearty and sincere invitation to you to hold the 1931 Ryder Cup Matches in our city.

Beautiful hotels with ample accommodations, interesting historical show places, central location, convention halls and an abundance of meeting places, make Columbus a most desirable convention city.

Everything possible will be done to make your meeting a success, should you accept this invitation.

Sincerely yours,

James J. Thomas
James J. Thomas
MAYOR

The Columbus Chamber of Commerce

30 EAST BROAD STREET

Columbus, Ohio

REAU

November 1929

To the Officers and Members of the
Professional Golf Association of America

Gentlemen:

The COLUMBUS HOTEL ASSOCIATION cordially invites you to hold
the Ryder Cup Matches in our Capital City in 1931.

Our organization comprises sixteen hotels, centrally located,
and we want to assure you that every effort will be made to
make your stay pleasant while in our City.

Our rates are recognized everywhere as being exceedingly
reasonable. Under no conditions will there be an increase in
rates during a Convention period, whether one of the smaller
groups or a Convention that tests the capacity of all of our
hotels.

Hoping we may have the privilege of entertaining your meeting,
we are

Yours very truly,

COLUMBUS HOTEL ASSOCIATION

R. B. Bunstine

R. B. Bunstine, President



COLUMBUS CHAMBER OF COMMERCE

OFFICE OF THE PRESIDENT

November 1929

To the Officers and Members of the
Professional Golf Association of America

Gentlemen:

The Columbus Chamber of Commerce, representing two thousand
men of this community, joins with other interests of Ohio's
Capital City in inviting the Professional Golf Association to
bring the Ryder Cup Matches to Columbus in 1931.

Columbus, a city of 320,000 people, is located geographically
just east of the center of population of America, and is in the
hotbed of a fine golf enthusiasm. The Scioto Country Club at
Columbus was host to the National Open in 1926, and from letters
on file from the U. S. Golf Association and from participants
in the Tournament, we have every reason to believe that our
efforts in staging this outstanding event were very satisfactory.

The Columbus Chamber of Commerce invites you and pledges its
wholehearted support in the promoting of this event, and begs
that you give serious consideration to our invitation.

Yours very sincerely,

Carl M. Baldwin

Carl M. Baldwin, President
COLUMBUS CHAMBER OF COMMERCE

Map of
Business District
of
Columbus, Ohio
showing location of
Railway Stations, Hotels,
Clubs, Theaters
and Public Buildings

The map illustrates the business district of Columbus, Ohio, with a focus on transportation and accommodation. Key features include:

- Streets:** High St (running north-south), Broad St (running east-west), State St (running east-west), and several cross streets including Chestnut St, Walnut St, Spring St, and Town St.
- Transportation:** Union Station is located near the top center. The Ohio State University is situated along High St. The Columbus Automobile Club and Interurban Traction Station are also marked.
- Hotels:** Numerous hotels are identified, including the Lenox Hotel, Northern Hotel, Columbus Hotel, and many others.
- Public Buildings and Clubs:** The State House, Chamber of Commerce, and various clubs like the Masonic Temple and Athletic Club are shown.
- Theaters:** Several theaters are marked, such as the Keith's Theater and the Southern Theater.
- Other Landmarks:** The State House is a prominent feature in the center. The Columbus Club and Seneca Hotel are also noted.

8.E Williams

[Page Four]

THE Hotels of Columbus are particularly well equipped and qualified to handle Conventions. They have been host to Conventions for many years, and experience has shown them the way to care properly for any kind of Convention.

You are not confined to one or two hotels for Headquarters as you are in some cities. The majority of Columbus Convention Hotels are equipped to handle the headquarters of average-size conventions.

DIRECTLY across from the State Capitol building, and located in the heart of Columbus, is the Deshler-Wallick Hotel, with "a thousand rooms and a thousand baths," advertised widely as "America's most beautifully equipped hotel." The structure includes 600 new rooms recently added and a part of the 48-story American Insurance Union Citadel. The Deshler-Wallick has 15,567 square feet of exhibit and convention hall space, including a spacious ballroom with a seating capacity of 1000, and a new Hall of Mirrors seating 500, with many adjoining committee rooms. Three main dining rooms and many private dining rooms afford ample dining facilities for large conventions.

THE CHITTENDEN has 252 rooms with a series of small meeting rooms, seating from 25 to 90 persons each. One large assembly room accommodates 300 people at a banquet, and 500 people for a meeting.

THIS HOTEL is centrally located. It has 250 rooms, a banquet hall accommodating 325 persons, and a Convention Hall seating 550.

[Page Five]

CONVENTION HOTELS



DESHLER



FORT HAYES



WINTON



ANNEX



VIRGINIA



NEIL HOUSE

CHITTENDEN

JEFFERSON



SENECA



SOUTHERN



COLUMBUS



LENOX



NORWICH



ROL-EDDY



CONVENTION HOTELS

The Fort Hayes

THE FORT HAYES is in the heart of Columbus. It is a 300 room Hotel, all with bath, and has one Convention Hall which will accommodate 200 persons at a banquet, and 250 at a meeting. Another room accommodates 80 at a banquet and 100 at a meeting. This Hotel was completed in November, 1924.

The Seneca

THE SENECA HOTEL has 250 rooms, with approximately 60 rooms available for transients. It is situated one-half block from Memorial Hall and is a modern Hotel institution. Its Convention facilities include a room which will accommodate 325 at a banquet, or 400 at a meeting.

The Virginia

THE VIRGINIA has 125 rooms with two meeting places, seating 300 persons each. It is well located and close to Convention Halls.

The Neil House

THIS is the third Neil House. The old Neil House, where Lincoln, Dickens and many other notable persons of history stayed, is gone. In its place a modern hostelry of 600 rooms now stands; a banquet hall, seating 1,800 people, exhibit space, a lounge, Committee rooms to accommodate from 25 to 100. This, is the New Neil House in the heart of the business district.

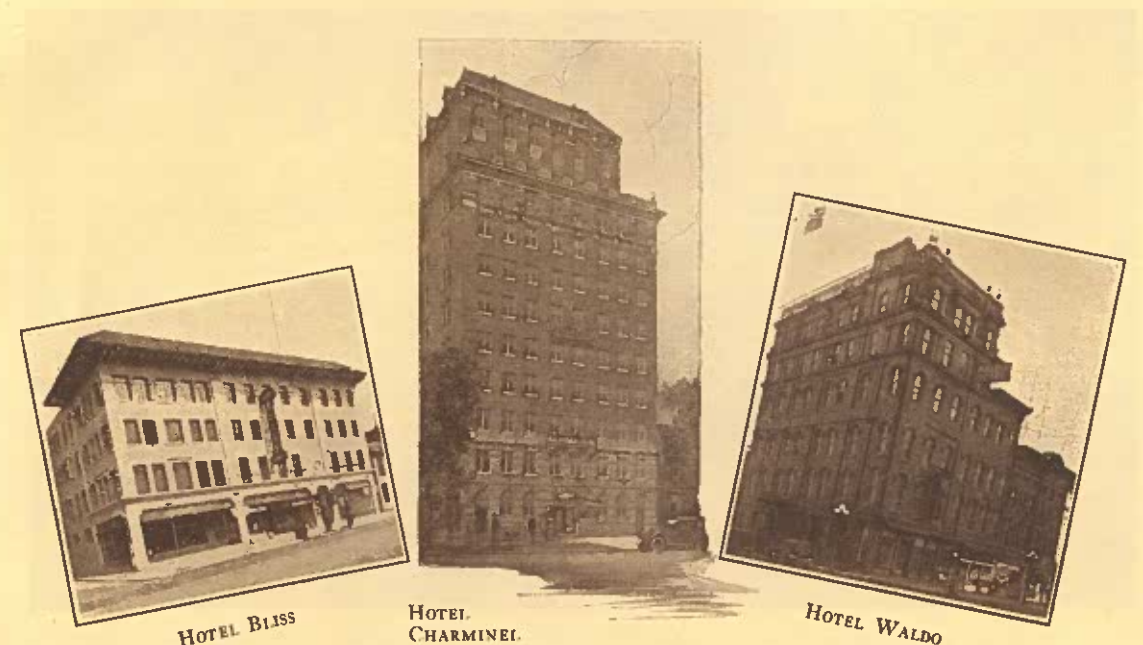


THERE are a number of other Hotels which do not have meeting rooms or banquet facilities. However, they have been handling their share of the Convention Delegates, who come to Columbus, and have served the convention public in a satisfactory manner. Among them are:

JEFFERSON	86 Rooms	NORWICH	100 Rooms
COLUMBUS	190 Rooms	WINTON	100 Rooms
ROL-EDDY	160 Rooms		

[Page Eight]

CONVENTION HOTELS



THE Hotel Charminel is one of Columbus' newest Hotels. It is built and operated on the Apartment Hotel Plan. Its purpose is to serve both the permanent and transient Guest. It has available for transients 44 Rooms and is located just a few blocks out of the congested district.

The Bliss Hotel has also just been completed, having 65 Rooms. This institution is modern in every respect and is ambitious to serve Conventions.

The Waldo has 100 Rooms at popular prices and is centrally located. For a number of years the Waldo has served Conventions in a satisfactory manner.



[Page Nine]

CONVENTION HALLS



The Coliseum

THE Coliseum has a seating capacity of 6,000 without use of the arena, and by using this area of the building approximately 10,000 persons can be accommodated. It is well lighted, heated and ventilated. The seats are above average for comfort for this type of building, as compared with most other large buildings throughout the Country. For meetings not requiring the seating capacity of the entire building, sections may be used, and estimates on the number of sections needed can be based upon the information that there are 32 sections, the largest section seating 160 persons. The Acoustics are good and in most cases it has not been found necessary even to install a loud speaker. This structure is particularly ideal for Conventions, which wish to conduct meetings and hold exhibits in the same building. The arena is 90 feet by 203 feet, making a total of 18,270 square feet, with approximately 42,000 square feet outside of arena, or a total of 60,000 available square feet.

The Columbus Chamber of Commerce

The Chamber of Commerce has an Auditorium with a seating capacity of 1,405, as follows:

729 first floor
329 balcony
347 gallery

Total, 1,405

This auditorium, in the Chamber of Commerce Building, is centrally located and available to conventions at all times. It is well equipped, has a stage, and is properly lighted, heated and ventilated.



[Page Ten]

CONVENTION HALLS

Memorial Hall

MEMORIAL HALL is a modern Convention Auditorium with all the facilities requisite to the proper housing of Convention Delegates. The stage has an area of 3,000 square feet. On the first floor 2,000 persons can be seated, or a total of 4,000 with use of the balcony. This building is one of similar memorials



throughout the United States, and great care was exercised when these buildings were planned to provide them with the proper acoustical properties. The building is well equipped with exits, there being a total of fifteen, thus making it simple, indeed, for large crowds within to disperse quickly and without needless rush and push. The building is well heated, lighted and ventilated. It is located only a five minutes walk from the State House, which is virtually the center of the city (Broad and High Streets). Memorial Hall is within easy walking distance of any of the Convention Hotels and is on one of the most beautiful thoroughfares of the City.

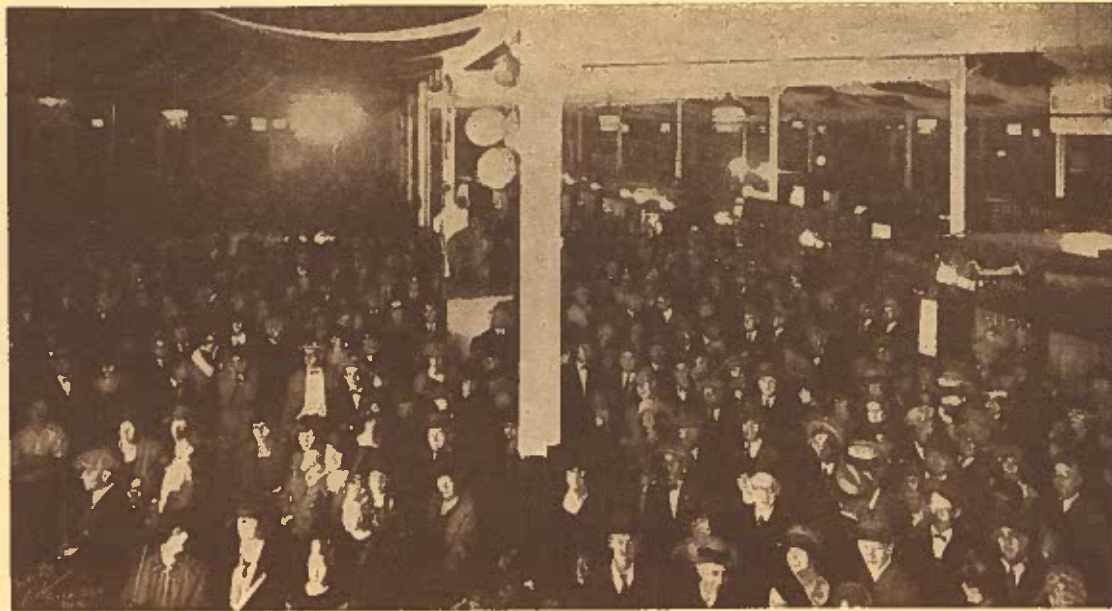
Elks' Hall

THE Elks' Hall has a convention room, seating 700 persons, and is in the same square with Memorial Hall, three and one-half blocks from the most central point in the City. It is a particularly desirable building for conventions, wanting to have exhibits and meetings in close proximity. Memorial Hall may be used for the exhibits and the Elks' Auditorium for Meetings.



[Page Eleven]

EXHIBIT HALLS



EXPOSITION HALL—105,000 SQUARE FEET OF EXHIBIT SPACE

Exposition Hall

THIS is one of the most impressive Exhibit Buildings in the country. It is of brick and steel construction, absolutely fireproof, 300x350, containing 105,000 square feet of floor space. The floor is concrete throughout, with no capacity limit. One particular feature of the building is the drive-in facilities for heavy type exhibits.

The entrances are 12 feet high and 11 feet wide. The upper roof is 20 feet high, and the lower roof is 15 feet high. The building is well heated, lighted, and ventilated. It is accessible, being reached by four street car lines, fifteen minutes ride from Broad and High Streets, and ten minutes by taxi (Special Rates.)

Transportation

The Big Four has direct switching service to this building, and carload shipments arriving via other lines can be switched to the Big Four and delivered to the Grounds under the reciprocal arrangements without extra charge. In the case of less-than-carload freight arriving via the Big Four,—this freight can all be put in a trap car and delivered to the Grounds without any charge for drayage.

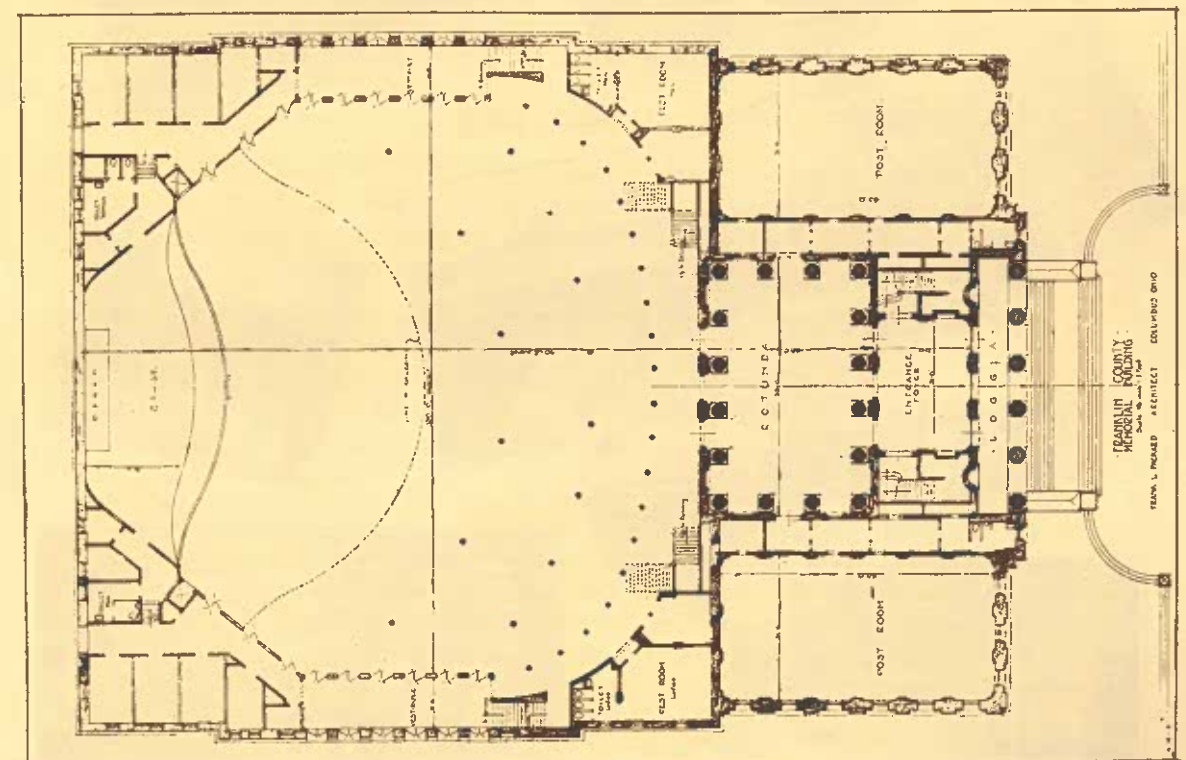
During Conventions the Railroad maintains an office on the Grounds, with a sufficient force of billing clerks and rate clerks to expedite the handling of shipments for the convenience of shippers who would otherwise have to come down-town to the local office.

EXHIBIT HALLS

Memorial Hall

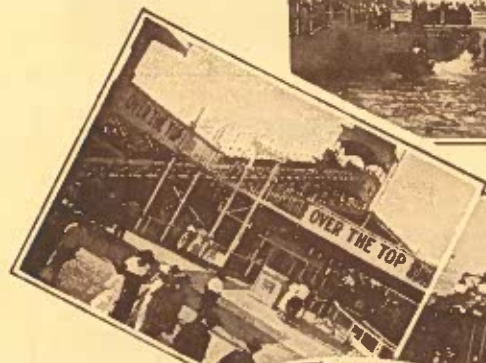
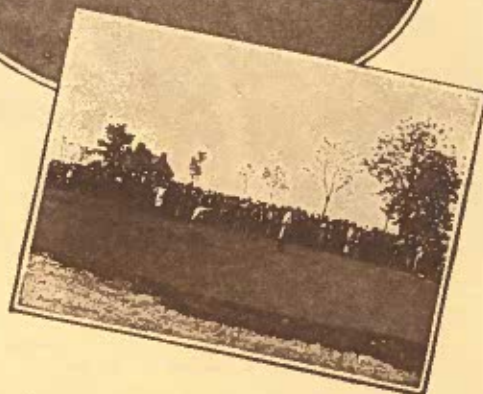
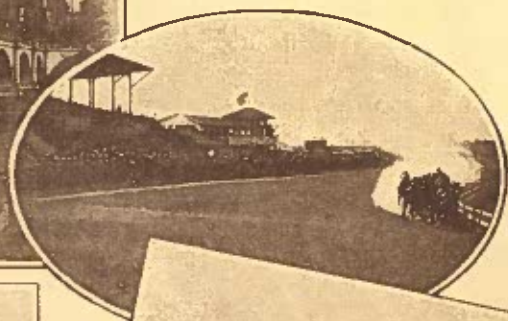
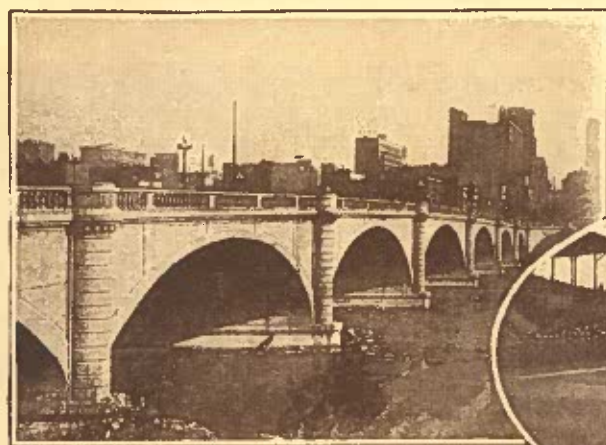
MEMORIAL HALL is the building referred to on page eleven, subject, "Convention Halls." This building has removable chairs and can be readily converted into an Exhibit Hall with 10,000 square feet of floor space, and an additional 3,000 square feet available on the stage. It is only three and one-half blocks from the most central point of the City, and is a very desirable building for exhibits requiring the amount of space available. It has facilities for every type of exhibit. Loading is at street level, making it easy to load heavy equipment, with fifteen points of entrance.

In the event a Convention desires to have exhibits and convention sessions together, use of the Elks' Hall, which is next door to Memorial Hall, and has a seating capacity of 700, is recommended. (Refer to page eleven, Photo Elks' Hall).



FLOOR PLAN OF MEMORIAL HALL

'ROUND ABOUT TOWN



[Page Fourteen]

AN IDEAL CONVENTION CITY

HOTEL accommodations are adequate and of a type desirable particularly for conventions. There are fifteen Convention Hotels and all of them make a special effort to please Conventions.

THIRTY-ONE HUNDRED ROOMS, approximately all with bath. The hotels of Columbus are closely grouped and easily accessible. 3,700 with New Deshler which will be completed in spring of 1926.

CONVENTION FACILITIES are comparable to most any of the large recognized Convention Cities. Exhibit Hall, with 105,000 square feet, another with 10,000 square feet, Convention Hall, seating 10,000 persons, and another seating 4,000.

TWENTY-SEVEN RAILROADS enter Columbus, connecting with practically every large city in the United States, and bringing more than two-thirds of the biggest cities in the Country within a night's ride of Columbus.

THERE are more improved highways in Ohio than in any other state west of the Allegheny mountains.

COLUMBUS is on the National Highway. The Dixie Highway is 65 miles to the west, and connects with the National Highway at Dayton, Ohio. The Lincoln Highway 65 miles to the north of Columbus.

THE BUS LINES are aiding "Short-Haul" travel. This is a comfortable and convenient method of transportation.

A LOOK at the radius map on page twenty will convince you of the central location of Columbus. This explains why Columbus is known as the "Short-Haul" Convention City.

AN AMERICAN CITY is Columbus. The population is about 92 per cent American born.

[Page Fifteen]

THEATERS

Legitimate

The Hartman

THE Hartman is the legitimate Play House of Columbus. Your Convention will find the same high-grade performances here that will be found in any of the largest cities.



Vaudeville and Motion Pictures

B. F. Keiths

THE Keith-Albee Theater, of course, is known to the Vaudeville-going public. The new Keith-Albee Building, now under construction, will be one of the finest to be found anywhere. It will be the east wing of the new American Insurance Union Building, shown at the right.



The James

THE James is another excellent vaudeville institution. Assurance is given of its ability to offer Convention Delegates the best that Vaudeville and Photoplay can produce. The James also operates The State and The Grand, both photoplay houses. The Majestic and Southern are photoplay houses of repute.



THE BROADWAY



THE SOUTHERN



THE STATE

[Page Sixteen]

PICTURE FACTS



STADIUM
OHIO STATE
UNIVERSITY

SEATING
CAPACITY
72,000

PHOTO COURTESY WEAVER & RINHART



[Page Seventeen]

COLUMBUS—THE CAPITAL OF OHIO

Population

THE population of Columbus is nearly 300,000, and is 92 per cent American. The citizens are contented and happy, because they are well provided with a good place in which to live, wholesome recreational features, and a good climate the year 'round.

Location

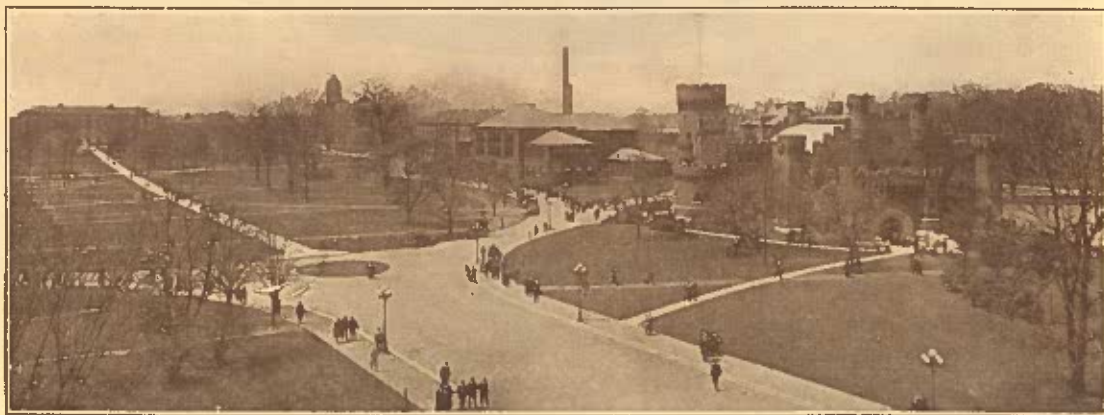
COLUMBUS, of course, is the capital of Ohio. It is in nearly the exact center of the State, and is in the center of an area embracing most of the recognized Convention Cities, of the United States.

Accessibility

BECAUSE of its central location, it is easily reached from all parts of the United States, and practically all of the large cities are brought to Columbus by an overnight ride. Twenty-seven railroads come and go in every direction and to every place.

Manufacturing

IN Columbus there are 690 manufacturing establishments, capitalized at \$102,977,000. They employ some 25,000 persons, and have an annual payroll in excess of \$50,000,000. The value of manufactured products, chief of iron and steel, is \$125,000,000 yearly. During the period 1914-1924, the increase in value of manufactured products was 219 per cent.



GROUP OF BUILDINGS—OHIO STATE UNIVERSITY

[Page Eighteen]

SERVICE TO CONVENTIONS

The Convention Bureau

THE Convention Bureau of the Columbus Chamber of Commerce maintains a staff of competent people to serve Conventions.

Typists, especially trained in the registration of Convention Delegates, are available at all times and will be furnished on request. This Bureau is equipped to handle details incident to registration. It is the purpose of this Bureau to assist conventions in the most effective way possible in obtaining Convention and Exhibit Halls. The service we render in this connection will be outlined in detail upon request.

Publicity

IN offering assistance in obtaining favorable recognition, from the Columbus press, supplying articles and illustrations for use in trade and various other publications, and facilitating the dissemination of advertising material, the Publicity Department of the Columbus Chamber of Commerce cooperates heartily with the officials of national and state conventions and the local committees.

Registration

Exhibits and Conventions

Press Service

CONVENTION BUREAU
Columbus Chamber of Commerce
COLUMBUS, OHIO

[Page Nineteen]

THE “SHORT HAUL” CONVENTION CITY



COLUMBUS not only is in the heart of Ohio but is the center of an area containing more than two-thirds of the population of the United States. But a night's ride from the most remote point within this five hundred mile radius, Columbus is the most easily accessible city to fully eighty per cent of the membership of your organization.

PRINTED BY
THE WARNER P. SIMPSON CO.
COLUMBUS, OHIO