

TOP 10

TIPS FOR THE BEACH

1

NEVER OVERESTIMATE YOUR SWIMMING ABILITY

2

CHECK IN WITH THE LIFEGUARDS

3

ALWAYS SWIM WITH A BUDDY

4

CHECK THE BEACH MARKER SIGNS

5

OBEY FLAGS AND WARNING SIGNS

6

ALWAYS USE SUNSCREEN & DRINK LOTS OF WATER

7

LEAVE THE GLASS CONTAINERS AT HOME

8

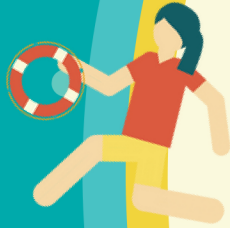
DON'T SWIM UNDER THE INFLUENCE

9

NEVER SWIM NEAR PIERS & JETTIES

10

USE CAUTION SWIMMING NEAR SURF ZONES



SUN & HEAT SAFETY TIPS

- Use a high SPF Sunscreen (15 or above)
- Wear loose-fitting, light-colored clothing, a hat & sunglasses with a full UVA/UVB protection.
- Drink plenty of water or non-alcoholic and caffeine-free liquids.

STINGS, BITES, & CUTS

- For all types of jellyfish and man-o-war stings, remove tentacles using a glove or towel, and rinse area using seawater. Do not rub the area with sand! For any serious reactions, call 9-1-1 and get the person to advanced medical care.
- Remember there is a high concentration of bacteria on objects in the water and near the beach. Clean even minor wounds well and monitor for signs of an infection.

SCAN HERE TO LEARN MORE ON BEACH SAFETY



BEACH AWARENESS IN CORPUS CHRISTI



CORPUS CHRISTI

BEACH RULES

The Corpus Christi Parks & Recreation Department would like everyone to have a safe and enjoyable trip, so we ask all beach visitors to follow these few simple rules.

ON ALL BEACHES

- No glass containers
- Dogs must be on a leash or under verbal command **May change seasonally*
- Properly dispose of pet waste
- Dispose of litter in trash receptacles
- No canopies left overnight



NORTH BEACH AND MCGEE BEACH

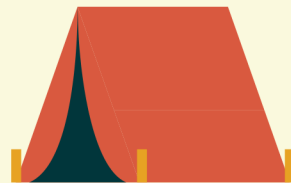
- Driving on the beach is prohibited
- No BBQ pits allowed on beach premises
- No moonwalks or other inflatable games
- No campfires



15 MPH

ON GULF BEACHES

- Speed limit is 15 mph
- Beach Parking Permits are required
- Campfires allowed, but no larger than 3' x 3' x 3' with no residue left
- Campfires must be fully extinguished and replace any sand in holes
- Camping is prohibited in front of condos and hotels
- Camping is allowed for 3 days & nights consecutively, but no more than 6 days within a month
- No pallets or building material allowed. Wood pallets and building material used in construction are often coated in toxic chemicals that are not meant to be burned in campfires. They also may contain hardware such as nails or screws which could become dangerous to others or wildlife.



OBEY FLAGS AND WARNING SIGNS

Corpus Christi is home to some of the most beautiful beaches the Coastal Bend has to offer. We want you to enjoy your time on the beach, following our Gulf Beach Flag Warning System.

What's the Flag Warning System?

Well, if you've been to one of our beaches you've probably already seen them. The color-coded flags are set up to let you know what the water conditions are like. It can range from normal beach conditions to rip tides and undertows, which - at times - can impose danger to swimmers and surfers.

