



Burford

Burford

With its high street sweeping downhill towards the River Windrush, its three-arched medieval bridge and its impressive church, both sides of the street flanked by an unbroken line of ancient houses, it's easy to see why Burford is one of Oxfordshire's most attractive towns.

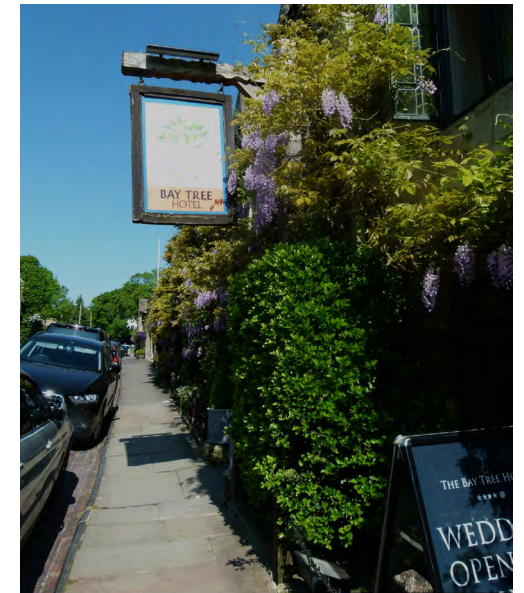
Little has changed over the centuries, Burford is popular with visitors, both for its beauty and history, but also for its shopping, especially antiques, and for the wide variety of places to eat, with restaurants, pubs and teashops. Here you can stay in a hotel frequented by King Charles and Nell Gwynn, eat where Nelson dined and visit England's oldest pharmacy, a chemists since 1734.

Half way down the hill, the 16th century Tolsey building, once the meeting place for medieval merchants, now houses The Tolsey Museum, a delightful, local museum illustrating the town's social and industrial past.

www.cotswolds.com/Burford



All images © Sophy Long; The Picture Taker; RIA Photography





Burford Garden Company

Burford OX18 4PA
Tel 01993 823117
www.burford.co.uk
f i

From its beginning as a plant nursery five decades ago, Burford Garden Company has grown to become one of the country's best independent retail experiences. 'Expect the unexpected', as one famous actor told us on their recent shopping visit. Spanning

some 15 acres, Burford Garden Company is synonymous with sourcing the 'hard-to-find'. It is beautifully curated, with stunning plants, stylish gardenalia, eclectic home interiors, cool boutique clothing and a burgeoning art gallery and reading room. Its acclaimed chef-led glasshouse cafés and kitchens are at the heart of the experience, complemented by the food hall area packed with local produce and exquisite food gifts.



St John the Baptist Church

Burford OX18 4RY
Tel 01993 823788
www.burfordchurch.org
f

The impressive St John the Baptist Church reflects the wool wealth of the town, and has many interesting memorials charting some of Burford's great families. Look out for some fascinating historic insights, such as the magnificent bale tombs and the graffiti on the font, which dates back to the Levellers movement in 1649 when mutineers were executed in the churchyard. The adjacent Warwick Hall has been redeveloped to provide a wonderful modern facility and café.



Cotswold Wildlife Park & Gardens

Burford OX18 4JP
Tel 01993 823006
www.cotswoldwildlifepark.co.uk
f t i

Stroll around the Park and enjoy uninterrupted views of the animals. Watch rhinos graze on the Gothic Manor House lawns with only a ha-ha between you or get eye-to-eye with giraffe. Cotswold Wildlife Park is one of the largest zoological collections in the UK, with over 1,500 animals from 250 different species. Set in 120 acres of beautiful parkland and stunning gardens, there's plenty of space to relax and get closer to wildlife.

Wheelchair and pushchair friendly – Changing Places facilities – Dog-friendly – Restaurant and picnic areas – Gift Shop and kiosks – Adventure Playground – Children's Farmyard – Reptile House.





Crocodiles of the World

Brize Norton OX18 3NX
Tel 01993 846353
www.crocodilesoftheworld.co.uk



Just two minutes off the A40 between Witney and Burford is one of the Cotswolds best kept secrets. Crocodiles of the World is the UK's only crocodile zoo and a unique all-weather attraction that brings visitors face-to-face with one of the world's most prehistoric predators.

Located in Brize Norton, Crocodiles of the World is dedicated to the conservation of crocodiles, and boasts one of the widest collections of crocodile species in the world.

Here you'll find American alligators, the much feared saltwater crocodile and critically endangered species such as Siamese crocodiles and even a Komodo dragon.

With talks, feeds and animal encounters throughout the day there is plenty to keep visitors captivated, as well as an unforgettable opportunity to be photographed holding a baby alligator.



St Oswald's Church

Widford OX18 4DU
www.oxfordshirecotswolds.org/things-to-do/attractions/widford-st-oswalds-church-p457601

A tiny church on its own in the Windrush Valley. In 1904 it was found to have been built on the base of a Roman house or temple. Mainly 13th century it has remnants of an 11th century Saxon or Norman building, e.g. the dividing wall, a chevroned corbel and the plain rough font.

There are two areas of uncovered Roman mosaic and several 14th century wall paintings. The nave has early 19th century box pews. Nearby are the remains of the deserted medieval village.



Tolsey Museum

Burford OX18 4QU
www.tolseymuseumburford.org

The Museum was established 1960 in the Tudor tolsey, or market house, on Burford High Street. Exhibits include the town maces, seals and corporation documents, as well as tools of local trades, including the making of bells, ropes, saddlery, clarinets, brewing, quarrying and clock-making. Other highlights include a collection of needlework samplers and a magnificent craftsman's doll's house, created by 80 locals in 1939 and furnished with a Regency interior.



Find out more at

www.cotswolds.com

