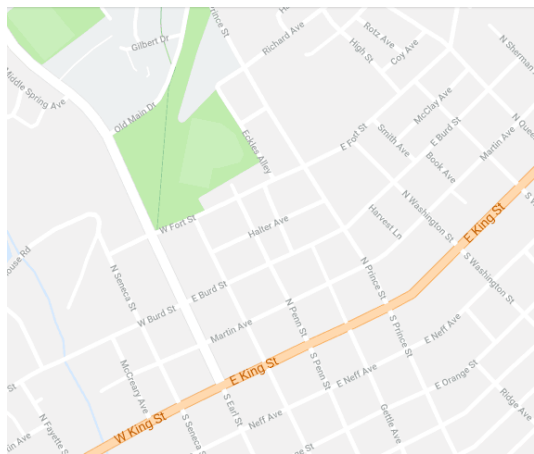


## LOCATIONS & HOURS



- 1. Appalachian Brewing Company**  
15 West King Street  
Monday – Wednesday: 4:00PM – 10PM  
Thursday – Sunday: 11:30AM – 11PM
- 2. Shippensburg Station**  
51 E Fort Street  
Open daily from dawn to dusk.
- 3. Shippensburg Public Library**  
73 W King Street  
Monday – Thursday: 9:00AM – 8PM  
Friday & Saturday: 9:00AM – 5PM
- 4. ShippenStitch**  
45 W King Street  
Monday – Friday: 9:00AM - 7PM  
Saturday: 9:00AM – 5PM
- 5. University Grille**  
32 E King Street  
Monday – Sunday: 9:00AM - 11PM
- 6. TBD**  
Shippensburg University  
Monday – Saturday

## SPECIAL THANKS

To all of the people who connected to  
make this exhibit possible:

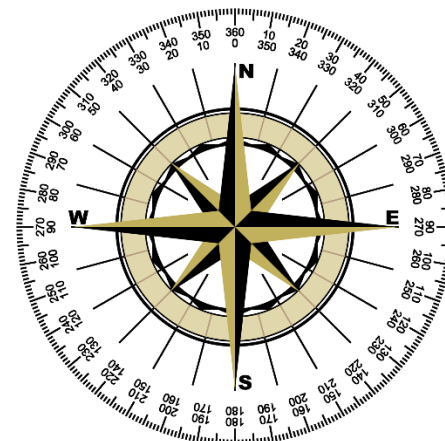
Tiffany Weaver \* John Bloom  
Shippensburg Historical Society  
Allen Dieterich-Ward \* Karin Bohleke  
Becca Justinus\* Mayor Kathy Coy  
Michael Fague/Pague & Fegan Hardware  
Cumberland Valley Railroad Museum  
Jody Coles/Shippensburg Public Library  
Shippensburg U President Laurie Carter  
Samuel Frushour \*  
Dave Johnson, Director Penn Relays  
Nicholas/Zimmerman Furniture  
Michael Gayman/Heirloom Furniture  
Michael Ringer/Appalachian Brewing  
Company \* Rose Doherty \* Ann Wass  
Tim Diehl/ShippenStitch \* Scott Donald  
W.T. Kirkman \* Mike Cavanaugh

Six degrees of separation between  
us and everyone else on this planet.  
The President of the United States, a  
gondolier in Venice, just fill in the  
names. ... I am bound to everyone  
on this planet by a trail of six people."

- Ouisa Kittredge, character in the play  
*Six Degrees of Separation* by John Guare

**THIS EXHIBIT WAS CREATED BY  
COURTNEY SMITH  
THROUGH A GRANT FROM  
SHIPPENSBURG UNIVERSITY**

# SIX DEGREES OF SHIPPENSBURG



**SEPTEMBER 2019  
SHIPPENSBURG, PA**

George Washington and John Riley never met. In fact, the Founding Father of the United States died



before the maker of ceramic ware from Burslem, Stoke-on-Kent, England even went into business; but, the two were connected through a blue Staffordshire transferware plate.



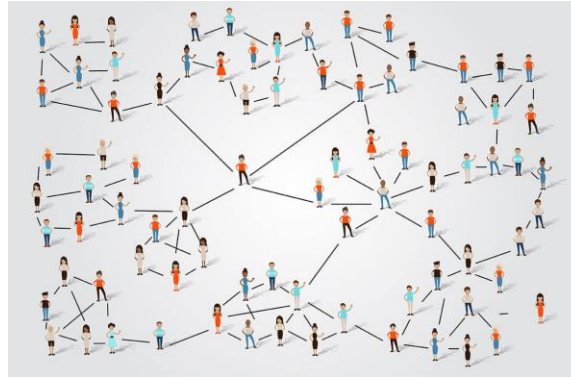
The plate featured a picture of Orwell Park, a grand estate in Suffolk, which had

been built by an admiral who distinguished himself in the War of Jenkins' Ear. A sailor named Lawrence Washington had served under this man. When Lawrence Washington built a home in Alexandria, VA, he named the property after his hero, Admiral Vernon. His half-brother George inherited Mt. Vernon.



## SIX DEGREES OF SEPARATION

Six Degrees of Separation is the theory that everyone on Earth can be linked to each other through a chain of six people.



**This exhibit demonstrates how seemingly unrelated people are connected to each other -- not through other people, but through everyday objects.**

Each display provides information about six people and the important contributions they made to society. Although these people never interacted, their lives intersected through an association with a **locally-owned** artifact.

## EXHIBIT ARTIFACTS

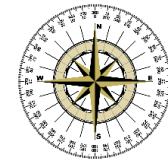
One object is on display at each site

**Artifacts include:**

- **Antique Pennsylvania Chair**
- **1820s Staffordshire Transferware Plate**
- **1920s Dietz "Acme" Railroad Lantern**
- **1920s Bottle 3-in-One Oil**
- **1950s Book *Charlotte's Web***
- **1980s Clarion University Track Baton**

## TREASURE HUNT

Each display in the exhibit has a special word on it, written below this symbol:



Visit all six sites to discover the complete message.

## SELFIE STATION



Photograph yourself in fun ways. Each site has different props. Post your pictures on Instagram with the hashtag **#6degreesofship**