

# Enjoy

## LOCAL FOOD AND DRINK

IN EAST YORKSHIRE AND  
THE SURROUNDING AREA

YOUR FREE 2023/24 GUIDE

DISCOVER | EXPERIENCE | EXPLORE





# Welcome...

We are excited to introduce you to a special 21<sup>st</sup> Anniversary edition of our Enjoy Local Food and Drink Guide. We hope you will enjoy discovering the abundance of delicious local produce our wonderful area has to offer.

From restaurants and pubs full of character, to cosy tearooms, you are spoilt for choice when it comes to relaxing with friends and family. Learn how to make your favourite recipe or tipple and visit one of the many farm shops, delis or local markets to pick up tasty treats before heading home or back to your guest accommodation.

The food and drink produced in East Yorkshire originates from the attractive and varied landscape. Whether you plan to walk, cycle, wildlife watch, visit a heritage site or attend a cultural event, you will also find information on a myriad of activities that you might like to experience. Enjoy!

**Katie Taylor MBE (Chair) and Elaine Robinson (Vice Chair)**

**East Yorkshire Local Food and Rural Tourism Network Steering Group**  
(Facilitated by the Rural Policy and Partnerships Team at East Riding of Yorkshire Council)



SUPPORTED BY  
**EAST RIDING**  
OF YORKSHIRE COUNCIL

This guide has been produced locally by Print and Design, Unit 25, Tokenspire Business Park, Hull Road, Woodmansey, Beverley HU17 0TB

*Whilst every effort is made to ensure the accuracy of information detailed in this guide, East Yorkshire Local Food Network cannot accept responsibility for any errors and omissions nor from any consequences arising from the use of this guide.*

All information correct at time of going to press (March 2023).

# Contents and Highlights

## DISCOVER...

Local Food and Drink Producers and Processors  
**Pages 4 - 11**

## EXPERIENCE...

Discover the wide range of exciting local food and drink experiences available in the area, including farmers' markets, food festivals and events, tours and tastings.

**Pages 12 - 17**

## ENJOY...

Where to Buy and Enjoy Local Food and Drink  
(Including Places to Stay)

**Pages 18 - 35**

## EXPLORE...

Find out more about the wealth of information available to help you explore the area

**Pages 36 and 37**

## PLUS...

Suppliers of Goods and Services to  
Local Food and Drink Businesses

**Pages 38 - 40**

East Yorkshire Local Food Network Membership  
Criteria and Benefits

**Page 41**

## MAP...

Where to Find Businesses in the Guide

**Pages 42 and 43**



Soanes Poultry



Made in East Yorkshire  
Christmas Market



Salt on the Harbour



Countryside Walks



Fenwick Flowers



# Discover...

Discover some of the delicious food and drink crafted by our dedicated and passionate producers located across the stunning East Yorkshire landscape and along the vibrant coastline.

From dairy products to meat, tempting cakes to beverages and fresh produce to Bridlington Bay seafood - the range of mouth-watering local food and drink available in the area is simply astonishing.

Our producers are always looking to expand what they offer to their customers, so look out for new and exciting products to buy for yourself or as a gift.

*Enjoy!*



Spirit of Yorkshire Distillery



Great Newsome Brewery



The Fiddle Drill Tearoom



John Wright Turkeys



## Bakery and Flour

1 **FULLERS QUALITY BAKERS (WHOLESALE)**  
 V fullersbakery.co.uk

2 **JULIE'S CAKE IN A BOX**  
 V juliescakeinabox.co.uk

3 **SIDE OVEN BAKERY**  
 sideoven.com

4 **THE LITTLE SQUARE CAKE COMPANY**  
 littlesquarecake.co.uk

5 **WHITE CHERRY BAKERY**  
 V whitecherrybakery.co.uk

## Chocolates and Confectionery

6 **BUTTERFLIES CHOCOLATES**  
 butterflieschocolates.co.uk

7 **CANDY MOUTH RETRO PICK & MIX**  
 candymouth.co.uk

8 **WHITE GABLES CONFECTIONERY**  
 V @whitegablesconfectionery



Butterflies Chocolates

## Dairy and Eggs

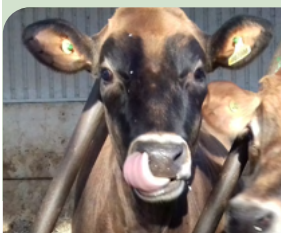
9 **BURGESS ICE CREAM LTD**  
 Shiptonthorpe, YO43 3PU  
 burgessicecream.co.uk

We are a dedicated ice cream manufacturer producing top quality dairy ice cream and sorbets for catering, retail and tourism sites across the whole of the East Riding of Yorkshire.



10 **CHERRY VIEW ICE CREAM**  
 Cherry Burton, HU17 7RP  
 @cherryviewicecream

Luxury dairy ice cream, homemade on the farm, from cow to carton. A variety of delicious flavours available all year round. Also delivered to cafes and restaurants.



11 **ELLIOTTS FREE RANGE EGGS**  
 elliotteggs.co.uk

12 **MR MOO'S REAL DAIRY ICE CREAM**  
 mrmoos.co.uk

13 **ST QUINTIN'S CREAMERY LTD**  
 V @stquintinscreamery

## Dressings, Honey, Oils, Preserves and Sauces

14 **BRACKEN HILL FINE FOODS LTD**  
 V brackenhillfinefoods.co.uk



Bracken Hill Fine Foods Ltd

15 **CHARLIE & IVY'S**  
 charlieandivys.co.uk

16 **DERWENT PRESERVES**  
 @derwentpreserves

17 **THE CHILLI JAM MAN LTD**  
 thechillijamman.com

18 **YORKSHIRE RAPESEED OIL**  
 yorkshirerapeseedoil.co.uk

## Drinks

19 **AITCHESON'S BRICKSHED BREWERY**  
 V eastyorkshirebeer.co.uk

20 **ATOM**  
 V atombeers.com

21

**GREAT NEWSOME BREWERY LTD**  
 Winestead, HU12 0NR

greatnewsomebrewery.co.uk

A farm-based brewery crafting exciting British beer styles, winning both national and international awards. Home grown malt and its distinctive yeast create its great tasting beer. Shop onsite.



22

**HALF MOON BREWERY**  
 Ellerton, YO42 4PB

halfmoonbrewery.co.uk

An independent family run micro-brewery, since 2013. Producing great award-winning beers, in the original Blacksmith's Forge, in Ellerton, near York.



Half Moon Brewery



## LOCAL FOOD AND DRINK PRODUCERS AND PROCESSORS



Laurel Vines Vineyard and Winery

**23 HOOTING OWL DISTILLERY LTD**  
 V hootingowldistillery.co.uk

**24 HOTHAM'S GIN AND RUM SCHOOL AND DISTILLERY**  
 V hothams.co.uk

**25 HOWDEN COFFEE**  
 V @howdencoffee

**26 LAUREL VINES VINEYARD AND WINERY**  
 V laurel-vines.co.uk

**27 LEVENTHORPE VINEYARD**  
 Woodlesford, LS26 8AF  
 V leventhorpevineyard.co.uk

Established in 1985, Leventhorpe re-introduced commercial wine growing to Yorkshire, producing wines of unique character, which have gained recognition and a reputation for quality. We produce whites, a red and both white and pink sparkling wines.



**28 LITTLE WOLD VINEYARD**  
 V littlewoldvineyard.co.uk

**29 OLD MILL BREWERY**  
 V oldmillbrewery.co.uk

**30 RAISTHORPE MANOR FINE FOODS**  
 Wharrah, YO17 9TF  
 V raisthorpemanor.com

We combine the finest locally sourced ingredients with traditional family recipes to create our award-winning beverages and also offer gin preserves, jellies and chocolates.



**31 RAVEN HILL BREWERY**  
 V ravenhillbrewery.com

**32 RYEDALE VINEYARDS**  
 V ryedalevineyards.co.uk



V yorkshirewinetrail.co.uk

## LOCAL FOOD AND DRINK PRODUCERS AND PROCESSORS

**33 SPIRIT OF YORKSHIRE DISTILLERY**  
 Hunmanby, YO14 0PH  
 V spiritofyorkshire.com

At the Spirit of Yorkshire Distillery, we make Filey Bay, the county's first single malt whisky from field to bottle, using 100% home grown barley. Tours, events, shop and coffee overlooking the stills.

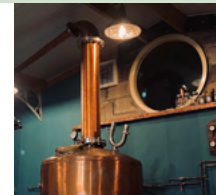


**34 THE GINERY**  
 V the-ginery.com



**35 TWISTED ROOTS DISTILLERY**  
 Bridlington, YO16 4XF  
 V rumrunner.online

Producers of fine Craft Rum and Moonshine. Distillery tours available. Free in store tasting. Onsite bottle shop.



**36 WHEATLEYS OF YORKSHIRE**  
 V wheatleysofyorkshire.com

**37 WICSTUN DISTILLERY**  
 V wicstun-distillery.co.uk

**38 WOLD TOP BREWERY**  
 Wold Newton, YO25 3HS  
 V woldtopbrewery.co.uk

Enjoy a taste of the Yorkshire Wolds with our award-winning ales. Brewed on the Mellor family farm using both home and wold grown barley and our own pure chalk filtered water.



**39 YORKSHIRE ORCHARDS**  
 V yorkshireorchards.co.uk

**40 YORKSHIRE TONICS**  
 Wharrah, YO17 9TF  
 V raisthorpemanor.com

Produced by Raisthorpe Distillery, with Yorkshire water, the naturally flavoured tonic water includes Quassia, which makes each Yorkshire Tonic dry and crisp but less bitter, allowing natural flavours to come to the fore.



**41 YORKSHIRE WOLDS APPLE JUICE CO.**  
 V yorkshirewoldsapplejuice.co.uk

**WOLD TOP BIG SKY BEER FESTIVAL**  
 FRIDAY 14 AND SATURDAY 15 JULY





Yorkshire Wolds Apple Juice Co.

## Fruit, Herbs, Salads, Vegetables and PJO

**42 BANNISTERS YORKSHIRE FAMILY FARM**  
[bannistersfarm.co.uk](http://bannistersfarm.co.uk)

**43 GREEN GROWERS**  
[greengrowers.wordpress.com](http://greengrowers.wordpress.com)

**44 MIRES BECK NURSERY**  
 North Cave, HU15 2NR

[miresbeck.co.uk](http://miresbeck.co.uk)

Mires Beck Nursery is a registered charity. We provide therapeutic horticulture to adults with learning disabilities. We grow perennials, herbs, trees, and vegetables distributed to the trade and onsite retail.



**45 SNAITH SALAD GROWERS LTD**  
[salads-yorkshire.com](http://salads-yorkshire.com)

**46 W CLAPPISON LTD (SPROUTS)**  
[@john@risby.karoo.co.uk](mailto:john@risby.karoo.co.uk)

## Meat, Poultry and Meat Products

**47 ANNA'S HAPPY TROTTERS LTD**  
[annashappytrotters.co.uk](http://annashappytrotters.co.uk)

**48 EAST RIDING COUNTRY PORK**  
[eastridingcountrypork.co.uk](http://eastridingcountrypork.co.uk)



East Riding Country Pork

**49 EXELBY FOODS**  
[exelbyfoods.co.uk](http://exelbyfoods.co.uk)

**50 JOHN WRIGHT FREE RANGE TURKEYS**  
[johnwrightturkeys.co.uk](http://johnwrightturkeys.co.uk)

**51 MONK FRYSTON BEEF AND LAMB**  
[monkfrystonorganics.co.uk](http://monkfrystonorganics.co.uk)

**52 ROSE COTTAGE PANTRY**  
[rosecottagepantry.co.uk](http://rosecottagepantry.co.uk)

**53 RYSOME LONGHORN BEEF**  
[@rysomeinfo@gmail.com](mailto:rysomeinfo@gmail.com) 07515 36796

**54 SOANES POULTRY**  
 Middleton on the Wolds, Driffeld, YO25 9UG  
[soanespoultry.co.uk](http://soanespoultry.co.uk)

We have been rearing award-winning chicken on Yorkshire farms since 1947. Available from independent retailers and restaurants throughout Yorkshire. Winner of 14 Great Taste Awards for Grain Fed, Higher Welfare and Free Range Chicken.



**55 WARRENDALE WAGYU**  
[warrendale-wagyu.co.uk](http://warrendale-wagyu.co.uk)

**56 YORKSHIRE DUCKS AND GEESE**  
[yorkshiregeese.co.uk](http://yorkshiregeese.co.uk)

## Ready Meals

**57 ALI BILTON COOKS LTD**  
 Pocklington, YO42 2QL  
[alibiltoncooks.co.uk](http://alibiltoncooks.co.uk)

Chef prepared, locally sourced, high quality frozen ready meals. Made in East Yorkshire and delivered to your door, available to click and collect from our kitchen in Pocklington or buy direct from our shop.

Ali Bilton Cooks  
 Frozen Fine Food



Ali Bilton Cooks Ltd

## Seasonings

**58 THE YORKSHIRE SALT MAIDEN**  
 Dringhoe, Driffeld, YO25 8AH  
[theyorkshiresaltmaiden.co.uk](http://theyorkshiresaltmaiden.co.uk)

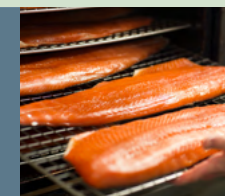
The Yorkshire Salt Maiden produce natural gourmet sea salt which is sustainably sourced, hand harvested and made just using the warmth of the sun - all here in East Yorkshire.



## Smoked Products

**59 STAAL SMOKEHOUSE**  
 Long Riston, HU11 5SA  
[staalSmokehouse.co.uk](http://staalSmokehouse.co.uk)

Exclusive, award-winning, family business dedicated to producing the finest smoked products. Situated near the beautiful market town of Beverley, we are committed to sourcing the finest local foods for smoking. Visit our online shop.



## Snacks

**60 LISTER'S CRISPS**  
[listerscrisps.co.uk](http://listerscrisps.co.uk)



# Experience...

Take a look behind the scenes with one of the fascinating food and drink experiences on offer, or enjoy a visit to some of the many festivals, events and markets taking place throughout the year.

You may choose to join a tour around a local brewery, distillery or vineyard to learn more about how traditional and modern processes are brought together to produce absolutely delicious results.

Alternatively, why not try making artisan foods for yourself? From bread making to sausage making, chocolate making tuition to improving your cookery skills there is a course available locally, for all ages, that will not fail to deepen your interest in local food and drink.



Old Mill Brewery



Made in East Yorkshire Christmas Market



## FARMERS' AND LOCAL PRODUCERS' MARKETS 2023

### Hornsea Local Market, Hall Garth Park, Cinema Street HU18 1PA

Fourth Saturday of the month (April - October) 9.30am - 1.30pm

Christmas market: Friday, 24 November (4pm - 8pm)

☎ 07799 742304 @ hornsealocalmarket@outlook.com f @hornsealocalmarket

### Hovingham Village Market, Hovingham

First Saturday of the month (February - December) 10.30am - 1.30pm

Christmas market: Saturday, 16 December @ themarket@hovingham.org.uk hovingham-market.org.uk

### Malton Monthly Food Market – Market Place

Second Saturday of the month, 9am - 3pm

☎ (01453) 693817 @ enquiries@visitmalton.com visitmalton.com

### The Ferguson Fawsitt Food and Craft Fair – Walkington

Second Friday of the month, 10am - 4pm

☎ (01482) 526317 @ info@fergusonfawsitt.co.uk fergusonfawsitt.co.uk

Please refer to the markets' own websites and social media accounts for updates during the year. Also, look out for delicious local food and drink at traditional weekly markets...

## COUNCIL-OPERATED MARKETS

### Pocklington Market, Pocklington YO42 2AR

9am - 4pm, Tuesdays Only

### Beverley Wednesday Market, Beverley HU17 0DG

9am - 4pm, Wednesdays Only

### Beverley Saturday Market, Beverley HU17 8AA

9am - 4pm, Saturdays Only

## OTHER MARKETS

### Bridlington Market, King Street YO15 2DQ

Wednesdays and Saturdays

### Skirlington Market, Atwick Road, Skirlington YO25 8SY

Wednesdays and Sundays

### Cottingham Market, Market Place, Cottingham HU16 5QG

Thursdays Only

### Driffield Market, Middle Street, Driffield YO25 6TR

Thursdays Only

### Howden Market, Market Place, Howden DN14 7BJ

Fridays Only

## FOOD FESTIVALS AND EVENTS DIARY 2023

This is just a selection of popular food festivals and events taking place throughout East Yorkshire and the surrounding area. Take a look at [visiteastyorkshire.co.uk](http://visiteastyorkshire.co.uk) for the latest updates – you'll always find something special to do and new experiences to enjoy.

### APRIL

Wed 5 - Sun 9	Chocolate Festival	📍 yorkfoodfestival.com
Fri 7	Easter Treats and Children's Farm Trail	📍 sideoven.com
Sat 8 and Sun 9	Filey Food and Drink Festival	📍 @fileyfooddrinkfestival

### MAY

Fri 12 and Sat 13	Beverley Gin Festival	📍 beverleyginfestival.co.uk
Sat 27 and Sun 28	Malton Food Lovers Festival (Spring)	📍 visitmalton.com

### JUNE

Sat 10 and Sun 11	Filey Food and Drink Festival	📍 @fileyfooddrinkfestival
Sun 11	Bridlington Old Town 1940s and 50s Festival	📍 @regenerationofbridlingtonoldtown
Sun 11	LEAF Open Farm Sunday	📍 farmsunday.org
Fri 16 and Sat 17	Great Newsome Festivale	📍 greatnewsomebrewery.co.uk

### JULY

Sun 2	Howden Show	📍 @howdenshow
Tue 11 - Fri 14	Great Yorkshire Show	📍 greatyorkshireshow.co.uk
Fri 14 and Sat 15	Big Sky Beer Festival	📍 woldtopbrewery.co.uk
Wed 19	Driffield Show	📍 driffieldshowground.co.uk
Fri 21 - Sun 23	Hornsea Carnival	📍 hornseacarnival.org.uk

### AUGUST

Sat 12 and Sun 13	Filey Food and Drink Festival	📍 @fileyfooddrinkfestival
Sat 26 and Sun 27	Malton Food Lovers Festival (Summer)	📍 visitmalton.com

### SEPTEMBER

Fri 8 - Sun 17	Heritage Open Days	📍 heritageopendays.org.uk
Sat 9 - Fri 22	Walking East Yorkshire Festival	📍 walkingeastyorkshirefestival.co.uk
Sat 16 - Sun 1 Oct	British Food Fortnight	📍 lovebritishfood.co.uk
Fri 22 - Sun 1 Oct	York Food and Drink Festival	📍 yorkfoodfestival.com

### OCTOBER

Sat 14 and Sun 15	Filey Food and Drink Festival	📍 @fileyfooddrinkfestival
-------------------	-------------------------------	---------------------------

### DECEMBER

Sat 2 and Sun 3	Malton Christmas Festival	📍 visitmalton.com
Sun 3	Bridlington Old Town Dickensian Christmas Festival	📍 @regenerationofbridlingtonoldtown
Wed 6 - Fri 8	Made in East Yorkshire Christmas Market	📍 beverleyfestivalofchristmas.co.uk
Sun 10	Beverley Festival of Christmas	📍 beverleyfestivalofchristmas.co.uk



## LOCAL FOOD AND DRINK EXPERIENCES

For a more hands on local food and drink experience, check out these regular events, tastings, tours and cookery classes...

### Butterflies Chocolates

#### Chocolate Making Workshops

Groups by prior arrangement  
[butterflieschocolates.co.uk](https://www.butterflieschocolates.co.uk)

### Hotham's Gin and Rum School and Distillery

#### Distil your own Gin or Rum

Saturdays, 2 - 5pm. See website for details  
[hothams.co.uk](https://www.hothams.co.uk)

### Laurel Vines Vineyard and Winery

#### Picnics, including Tour of Vineyard and Winery

May – September (Thursdays and one Saturday each month)  
[laurel-vines.co.uk](https://www.laurel-vines.co.uk)

### Little Wold Vineyard

#### Tasting Tours, Vineyard Picnics and Tasting Room Events

Various dates  
[littlewoldvineyard.co.uk](https://www.littlewoldvineyard.co.uk)

### Old Mill Brewery

#### Brewery Tours

Pre-booking essential. Groups of 10-30  
[oldmillbrewery.co.uk](https://www.oldmillbrewery.co.uk)

### Side Oven Bakery

#### Farm and Bakery Open Days

Various dates throughout the year  
[sideoven.com](https://www.sideoven.com)



Spirit of Yorkshire Distillery

### Spirit of Yorkshire Distillery

#### One Hour Distillery Tours

Monday – Saturday 11am, 1pm and 3pm  
 Sundays 11am and 1pm.  
[spiritofyorkshire.com](https://www.spiritofyorkshire.com)

### The Ginery

#### Host your own Gin Tasting Evening

By prior arrangement  
[the-ginery.com](https://www.the-ginery.com)

### Twisted Roots Distillery

#### Distillery Tour and Taste Days

Monthly. See website for details  
[rumrunner.online](https://www.rumrunner.online)

### Wold Escapes

#### Cookery Classes, DofE Residential Courses and Events

Numerous dates  
[woldescapes.co.uk](https://www.woldescapes.co.uk)

### Wold Top Brewery

#### Brewery Tours

Tuesday afternoons and selected Saturdays throughout the year  
[woldtopbrewery.co.uk](https://www.woldtopbrewery.co.uk)

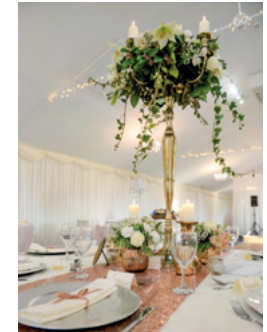


Wold Escapes

## LOCAL FOOD AND DRINK EXPERIENCES

# RIX PAVILION

A VENUE FOR ALL SEASONS



The Rix Pavilion is a purpose-built events venue with excellent links to the whole of East Yorkshire and ample free parking. With onsite bar and catering facilities the Pavilion is both a perfect self-contained venue and support for outside events in the Showground itself. The perfect venue for any event.

- Private Parties
- Public Events
- Conferences
- Christenings
- Exhibitions
- Weddings
- Meetings
- Funerals & Wakes

DRIFIELD SHOWGROUND

## THE RIX PAVILION

THE SHOWGROUND, KELLEYTHORPE, DRIFIELD, EAST YORKSHIRE YO25 9FB

Web: [www.driffieldshowground.co.uk](http://www.driffieldshowground.co.uk) · [facebook.com/driffieldshowground](https://www.facebook.com/driffieldshowground)

Phone: 01377 257 494 · Email: [events@driffieldshowground.co.uk](mailto:events@driffieldshowground.co.uk)



# Enjoy...

From tempting cakes to locally sourced ingredients on the menu, our members work closely with each other to make sure that their restaurant, café, pub, tearoom, shop or delicatessen can offer you a wonderful range of local food and drink.

You will also find hearty breakfasts at local B&Bs, while many holiday cottages provide a welcome hamper of tasty local specialities.

Whether you are organising a family trip out, planning a special event or looking to arrange a romantic dinner for two, when it comes to selecting a fantastic venue featuring delicious local produce you will be simply spoilt for choice.



Drewton's Farm Shop and Restaurant



Bridlington Harbour



## WHERE TO BUY AND ENJOY LOCAL FOOD AND DRINK

61

### A LAVERACK AND SON (Family run butchers)

📍 [laveracks.co.uk](http://laveracks.co.uk)

62

### A LAVERACK AND SON (Holme bakery)

📍 [laveracks.co.uk](http://laveracks.co.uk)

63

### ALLERTHORPE LAKE LAND PARK

Allerthorpe, YO42 4RL

📍 [allerthorpelakelandpark.co.uk](http://allerthorpelakelandpark.co.uk)

Our Lakeside Café offers stunning views overlooking the watersports lake. An ideal place to relax and enjoy a full English breakfast, lunch or homemade cakes, scones, speciality coffees and teas. Local fish and chips served Fridays.



64

### ALOHA BRIDLINGTON LTD

📍 [alohabridlington.co.uk](http://alohabridlington.co.uk)

65

### ANNA'S HAPPY KITCHEN

📍 [annashappykitchen.co.uk](http://annashappykitchen.co.uk)

66

### ATOM BAR BEVERLEY

📍 [@atombarbeverley](https://www.facebook.com/atombarbeverley)

67

### ATOM BAR HULL

📍 [@atombarhull](https://www.facebook.com/atombarhull)

68

### BERT'S BARROW

📍 [bertsbarrow.co.uk](http://bertsbarrow.co.uk)

69

### BESSINGBY MEWS HOLIDAY COTTAGES

📍 [bessingbymews.co.uk](http://bessingbymews.co.uk)

70

### BEVERLEY ARMS

Beverley, HU17 8DD

📍 [beverleyarms.co.uk](http://beverleyarms.co.uk)

A historic 18th-century coaching inn providing a luxurious experience in the Georgian Quarter. Packed with character, with a beautiful pewter bar and lounges leading to a charming restaurant. Large heated outdoor space for eating al fresco.



71

### BEVERLEY PIZZA COMPANY

📍 [beverleypizzacompany.co.uk](http://beverleypizzacompany.co.uk)

72

### BEVERLEY RACECOURSE

📍 [beverley-racecourse.co.uk](http://beverley-racecourse.co.uk)

73

### BISHOP WILTON COMMUNITY SHOP & CAFÉ

📍 [bwcommunityshop.co.uk](http://bwcommunityshop.co.uk)

74

### BLACKSMITHS COTTAGE B&B

📍 [@blacksmithscottagekilham](https://www.facebook.com/blacksmithscottagekilham)

75

### BOLTHOLE COTTAGE

📍 [boltholecottage.com](http://boltholecottage.com)



Beverley Arms

## WHERE TO BUY AND ENJOY LOCAL FOOD AND DRINK

76

### BOSVILLE ARMS COUNTRY INN

Rudston, YO25 4UB

📍 [bosvillearms.co.uk](http://bosvillearms.co.uk)

Rural country pub just 10 minutes drive from Bridlington and Driffield. Open Tuesday to Sunday, serving great quality home cooked food and real ales. Big sunny beer garden, dog and family friendly. B&B and motorhome stopovers.



77

### BRIDLINGTON SPA

Bridlington, YO15 3JH

📍 [bridspa.com](http://bridspa.com)

We offer a bespoke hospitality service incorporating local produce. Whether you're looking for afternoon tea, fork or finger buffets, banqueting or gourmet dining, our expert in-house chefs will make sure your experience is mouth-watering.



78

### BROADGATE FARM COTTAGES

Beverley, HU17 8RP

📍 [broadgatefarmcottages.co.uk](http://broadgatefarmcottages.co.uk)

Award-winning 5 star holiday cottages, lovely views and surrounded by wildlife. Cosy cottages for couples or larger barns for extended family or groups. Accessible and pet friendly.



79

### BROWNS OF POCKLINGTON

📍 [@brownsthegreengrocers](https://www.facebook.com/brownsthegreengrocers)

80

### BUNNY HILL WEDDINGS

📍 [bunnyhillweddings.co.uk](http://bunnyhillweddings.co.uk)

81

### BURTON AGNES HALL CARRIAGE HOUSE CAFÉ

📍 [burtonagnes.com](http://burtonagnes.com)



Burton Agnes Hall and Gardens

82

### BURTON CONSTABLE HALL AND GROUNDS

📍 [burtonconstable.com](http://burtonconstable.com)

83

### CAPTAIN WILLIAMS BAR & B&B

📍 [@CaptainWilliams](https://www.facebook.com/CaptainWilliams)

84

### CASTLE CAFÉ

📍 [@CastleCafeWithernsea](https://www.facebook.com/CastleCafeWithernsea)

85

### CERUTTIS

📍 [ceruttis.co.uk](http://ceruttis.co.uk)



Ceruttis



86

### CHERRY VIEW ICE CREAM

Cherry Burton, HU17 7RP

@cherryviewicecream

Luxury dairy ice cream, homemade on the farm, from cow to carton. A variety of delicious flavours available all year round. Also delivered to cafés and restaurants.



Cherry View Ice Cream

87

### CHURCH FARM COTTAGES

Garth on the Wolds, YO25 3ES

churchfarmgarth.co.uk

Church Farm is home to three 4 Star Gold self-catering cottages in the Yorkshire Wolds. Former 18th-century farm buildings sympathetically converted offering modern, warm and comfortable accommodation. Dogs welcome.



88

### COLE'S KITCHEN

@coleskitchenbeverley

89

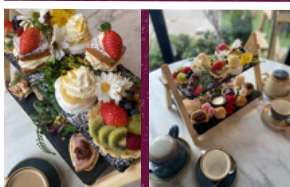
### COLETTA & TYSON GARDEN CENTRE

colettagardencentre.co.uk

OPEN 7 DAYS A WEEK 9AM-5.30PM  
SUNDAY 9.30AM-4PM

**COLETTA & TYSON**  
NURSERIES AND GARDEN CENTRE

*Visit The Old Glasshouse Café & Deli*



Try our Afternoon Tea for Two!

Book online at:  
COLETTAGARDENCENTRE.CO.UK

FOLLOW US:



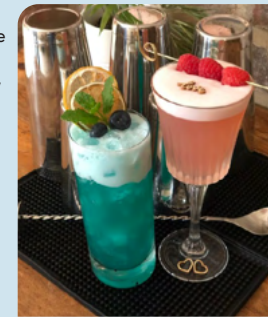
90

### COOPER'S BARS

Driffield, YO25 5EX

coopersbars.co.uk 07436 909858

Creates magical occasions to ensure your event is perfect! Weddings, birthdays, cocktail masterclasses, corporate entertainment, private dining and so much more. Our bespoke bars and expert team have everything you need!



91

### COSTELLO'S BAKERY

costellosbakery.com

92

### DOCKSIDE KITCHEN

Bridlington, YO15 3AH

docksidekitchen.co.uk

We are all about great food, great drinks and a great time! Serving the finest local cuisine and real ales along with wines and cocktails, all in a relaxed environment in the heart of Bridlington.



93

### DREWTON'S FARM SHOP AND RESTAURANT

@drewtons @drewtons



Drewton's Farm Shop and Restaurant

94

### DRIFFIELD AGRICULTURAL SOCIETY

driffielshowground.co.uk

95

### EAST RIDING COUNTRY PORK BUTCHERS

eastridingcountrypork.co.uk

96

### EASTFIELD GARDEN CENTRE

eastfield-gardencentre.co.uk

97

### FARM SHOP AT CRANSWICK

Hutton Cranswick, YO25 9PQ

farmshopatcranswick.co.uk

Family run farm shop and café offering great tasting local food with fantastic service. Renowned for our homemade pies and takeaway sandwiches. Visit our café for Yorkshire breakfasts, tasty lunches and delicious homemade cakes.



98

### FERNS FARM HOTEL

fernsfarm.co.uk

99

### FIELD HOUSE FARM COTTAGES

heritage-escapes.co.uk

100

### FIELDS OF ANLABY BUTCHERS & BAKERS

fieldsonline.co.uk

101

### FLOUR AND FEAST

flourandfeast.com

102

### FLOURISH AND PROSPER

flourish-and-prosper.com





**DREWTON'S**  
ON THE DREWTON ESTATE

**FARM SHOP  
RESTAURANT**

SOUTH CAVE [www.drewtons.co.uk](http://www.drewtons.co.uk) 01430 425079

103

**FRITH FARM**

Beverley, HU17 9RS

 [frithfarming.com](http://frithfarming.com)


Frith Farm is local to Hull and Beverley. It is a Community Supported Agriculture (CSA) Farm. We farm regeneratively to produce seasonal, chemical free vegetables for the local community.



104

**FULLERS QUALITY BAKERS (RETAIL)**

Goole, DN14 6DR

 [fullersbakery.co.uk](http://fullersbakery.co.uk)


Family run, award-winning retail/wholesale bakery in Beverley, Howden and Goole. We only use the finest ingredients to bring you a selection of hand-crafted artisan breads and rolls, confectionery, savouries and bespoke sandwiches.

**FULLERS Bakery**

105

**HIGH BARN COTTAGES**
 [heritage-escapes.co.uk](http://heritage-escapes.co.uk)

106

**HIGH CATTON GRANGE SELF CATERING AND B&B**
 [highcattongrange.co.uk](http://highcattongrange.co.uk)

107

**HIGHFIELD**

Driffield, YO25 5YP

 [thehighfieldhouse.com](http://thehighfieldhouse.com)


Award-winning hotel, great British restaurant and boutique hire. Immerse yourself in British opulence, feast in our lounge bar and fine dining restaurant, sleep in one of our 7 unique suites, be entertained at our Lunar club and celebrate in style.



108

**HOWDEN SHOW - SUNDAY 2 JULY 2023**
 [@howdenshow](https://www.facebook.com/howdenshow)



109

**HULL AND BEVERLEY HERITAGE STORE**
 [hullandbeverleyheritagestore.co.uk](http://hullandbeverleyheritagestore.co.uk)


110

**KINSHIP**

Driffield, YO25 6QE

 [kinshipcoffee.co.uk](http://kinshipcoffee.co.uk)  
 [hello@kinshipcoffee.co.uk](mailto:hello@kinshipcoffee.co.uk)


Kinship is a coffee shop in the heart of Driffield serving the highest quality coffee, tea, sweet and savoury eats. Sit in or takeaway.



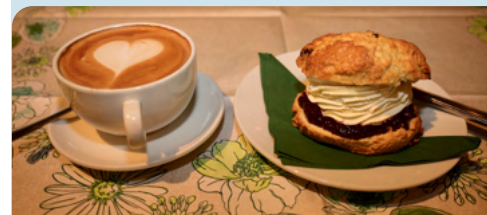
111

**LANGLANDS GARDEN CENTRE**


Shiptonthorpe, YO43 3PN

 [langlandsgardencentre.co.uk](http://langlandsgardencentre.co.uk)

A family business priding itself on producing a vast range of homemade cakes, pastries and savouries with relaxing coffee shops and a farm shop. All well worth a visit.



112

**LAVERACKS (BUTCHERS, BAKERY & DELI)**
 [@LaveracksPocklington](https://www.facebook.com/LaveracksPocklington)

113

**LEAFY SEADRAGON REFILL CO LTD**

Hornsea, HU18 1AD

 [leafyrefill.co.uk](http://leafyrefill.co.uk)


Locally sourced, planet-friendly products served by happy, friendly and knowledgeable staff. Buy in-store, for click and collect or delivery. Waste free and reasonably priced.

Leafy  
Seadragon




Refill Co. Ltd


114

**LILYPAD CAFÉ (BURNBY HALL GARDENS)**
 [@lilypadcafebhg](https://www.facebook.com/lilypadcafebhg)


115

**LITTLE IMAGINATION STATION**
 [littleimaginationstation.co.uk](http://littleimaginationstation.co.uk)


116

**LITTLE OTCHAN GLAMPING**
 [littlotchan.co.uk](http://littlotchan.co.uk)

117

**LOFTSOME BRIDGE HOTEL AND RESTAURANT**
 [loftsosomebridge.co.uk](http://loftsosomebridge.co.uk)

118

**MARTON MANOR FARM SHOP AND TEA ROOMS**
 [martonmanorfarmshop.com](http://martonmanorfarmshop.com)




119

### MIRES BECK NURSERY CAFÉ

North Cave, HU15 2NR

📍 miresbeck.co.uk

Mires Beck Café is a volunteer operation for key events onsite. We otherwise provide visitors with a self-service refreshments and cakes offer. Open Mon - Sun 10am - 3pm, April - September.



125

### NORTH STAR SANCTUM

📍 northstarsanctum.co.uk

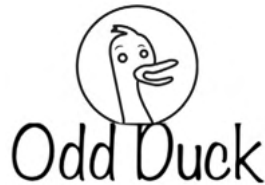
126

### ODD DUCK

Beverley, HU17 9EH

☎ 07736 047247

Odd Duck is a group of award-winning chefs and front of house staff who offer a range of hospitality solutions. From kitchen takeovers, pop ups, mobile and event catering to kitchen and bar consultancy.



127

### OGINO JAPANESE RESTAURANT

📍 ogino.co.uk

128

### OPEN DOOR COMMUNITY CAFÉ

📍 @cherrychurchx



Anna's Happy Kitchen

120

### MOLLY & JEAN

Driffield, YO25 6PS

📍 mollyandjean.co.uk

Small cosy themed vintage tearoom, serving brunch, lunches and afternoon teas. Delicious homemade cakes, scones and light meals. The tea rooms are available for private hire for afternoon teas, lunches and dinners.



121

### MR MOO'S REAL DAIRY ICE CREAM PARLOUR AND CAFÉ

📍 mrmoos.co.uk

122

### MUDDY SOULS EVENTS

📍 muddysoulsevents.co.uk

123

### MUMMY MEEGZ

📍 @mummymeegzvegan

124

### NORDHAM COTTAGES

📍 nordhamcottages.co.uk

129

### PANTRY IN THE PADDOCK

Thorpe le Street, YO42 4LJ

📍 @pantry.in.the.paddock

Farm shop selling our own eggs and other quality Yorkshire produce through touchscreen, contactless vending machines. A new and convenient shopping experience open 24/7. Takeaway coffee available too.



130

### PASTURE HOUSE HOLIDAY COTTAGES

Brandesburton, YO25 8EP

📍 pasturehouseholidaycottages.co.uk

Two stunning properties in an idyllic rural setting that offer a uniquely special 5-star break, inclusive of Yorkshire produce welcome hamper. Pasture House sleeps 12. The Stables sleep 4.



131

### RACHEL'S WALNUT COTTAGE TEAROOM

Huggate, YO42 1YJ

📍 rachelswalnutcottage-tearoom.co.uk

Vintage traditional tearoom that prides itself on daily home baking. Offering a warm and friendly atmosphere whilst you enjoy soup, cakes and scones served on fine bone china.



132

### RAFTERS OF DRIFFIELD

Driffield, YO25 6PH

📍 myvegbox.com

Traditional greengrocer with many links to local farmers and producers. A great destination for food lovers, we stock many artisan products, as well as a fantastic selection of fine wines, local ales and gins.



133

### RAILWAY INN

📍 therailwayinnpub.co.uk

134

### RIVERLANDS WEDDING BARN

📍 riverlands.co.uk

135

### ROOS ARMS

📍 roosarms.com

136

### ROSE COTTAGE BUTCHERS

📍 @rosecottagebutchers

137

### ROSE COTTAGE HUGGATE

📍 rosecottagehuggate.co.uk



Rachel's Walnut Cottage Tearoom



138

### RSPB BEMPTON CLIFFS

Bempton, YO15 1JF

🌐 [rspb.org.uk/bemptoncliffs](https://rspb.org.uk/bemptoncliffs)

A visit to Bempton Cliffs is always special but when you can also get some fabulous cakes and great coffee it'll really make your day. The wildlife is pretty awesome too!

Registered charity no. 207076 (England and Wales)



139

### RUSTIK LOUNGE

📍 @rustiklounge

140

### RYSOME GARTH B&B

📍 @rysomainfo@gmail.com ☎ 07515 369796

141

### SAILS CAFÉ

Skidby Windmill, HU16 5TF

🌐 [sailscafe.com](https://sailscafe.com)

Located in the courtyard of the historic Skidby Windmill, this is the perfect place to visit for wholesome homemade food. Children's menu and play area. Open Tuesday to Sunday 10am - 4pm.



142

### SAINTS AND SINNERS, MARKET WEIGHTON

📍 @SaintsandSinnersToGo

143

### SALT ON THE HARBOUR

🌐 [saltontheharbour.co.uk](https://saltontheharbour.co.uk)

144

### SAMA SAMA

🌐 [sama-sama.uk](https://sama-sama.uk)

145

### SEAWAYS CAFÉ, GLAMPING AND CAMPING

🌐 [seawayscafe.co.uk](https://seawayscafe.co.uk)

146

### SEWELL ON THE GO

🌐 [sewellonthego.co.uk](https://sewellonthego.co.uk)

147

### SEWERBY HALL AND GARDENS

Sewerby, YO15 1EA

🌐 [sewerbyhall.co.uk](https://sewerbyhall.co.uk)

Situated in a dramatic clifftop position with spectacular views over Bridlington. Explore 50 acres of 19th-century parkland, the house, zoo and adventure playground. Local produce available from The Stables Shop and Clock Tower Café.



148

### SLEDMERE FARM SHOP AND CAFÉ

Sledmere, YO25 3XG

🌐 [sledmerehouse.com](https://sledmerehouse.com)

Offering a wide range of essentials and delicious homemade, tasty treats. Produce is sourced locally and we often have seasonal fruit and vegetables straight from our very own walled garden.



149

### SMITHS BUTCHERS

📍 @Smithsbutchersbridlington

150

### SPURN DISCOVERY CENTRE CAFÉ

Kilnsea, HU12 0UH

🌐 [ywt.org.uk/spurn](https://ywt.org.uk/spurn)

We offer a wide variety of refreshments and delicious, sustainable, homemade daily specials, using locally sourced ingredients wherever possible. Well known for our hearty soups and stews! Enjoy the dramatic view over the Humber Estuary.



151

### STREET FARM COTTAGES

📍 [streetcottages.co.uk](https://streetcottages.co.uk)

152

### STUARTS OF DRIFFIELD FISH & CHIPS

🌐 [stuartsofdriffield.co.uk](https://stuartsofdriffield.co.uk)

153

### T C PATISSERIE LTD

Beverly, HU17 8EE

📍 @tcpatisserie

A Taste of France! Fine French cuisine all handmade on the premises. Delicious homemade pastries and tasty take away meals to reheat and enjoy at home. Buffets catered for and celebration cakes to order.



154

### TAPHOUSE BREWPUB

🌐 [taphousehull.co.uk](https://taphousehull.co.uk)

155

### THE BALLOON TREE FARMSHOP AND CAFÉ

🌐 [theballoontree.co.uk](https://theballoontree.co.uk)



Salt on the Harbour

156

### THE BLACK HORSE, LITTLE WEIGHTON

🌐 [blackhorselittleweighton.com](https://blackhorselittleweighton.com)

157

### THE BUTCHERS DOG

🌐 [thebutchersdog.co.uk](https://thebutchersdog.co.uk)

158

### THE COW SHED @ FRAISTHORPE BEACH

Fraisthorpe, YO15 3QU

🌐 [thecowshedatfraisthorpe.co.uk](https://thecowshedatfraisthorpe.co.uk)

We offer a high standard of home cooked food and baking using local ingredients and home reared beef. Wide selection of Wold Top beers and wines. Takeaway throughout summer (weather permitting). Panoramic sea views. Dog friendly.



159

### THE CROMER GUEST HOUSE

🌐 [cromerguesthousebridlington.co.uk](https://cromerguesthousebridlington.co.uk)

160

### THE DEEP

🌐 [thedeep.co.uk](https://thedeep.co.uk)

161

### THE FARMER'S DEN AT MANOR FARM CAMPING

🌐 [manorfarmcamp.co.uk](https://manorfarmcamp.co.uk)

162

### THE FIDDLE DRILL TEAROOM

📍 @fiddledrill



163

### THE FOOD SHOP

Hornsea, HU18 1PB

Facebook icon @thefoodshophornsea

On the main shopping street, providing quality homemade pasties, quiches, award-winning pork pies, speciality pies and home cooked meat. Butchery counter featuring our homemade speciality sausages and various cuts of meat. Christmas hampers.



164

### THE FOX AND CONEY INN

thefoxandconeyinn.co.uk

165

### THE FRUIT YARD

Facebook icon @PYOShiptonthorpe

166

### THE FRYING FARMER

Aldbrough, HU11 4QW

Facebook icon @fryingfarmer

Traditional rustic fish and chips restaurant and takeaway. Serving fish and chip favourites, other weekly items and Barista coffee. Home of the Furger! Check our Facebook page for our latest menu.



167

### THE GINGER COW COMPANY

thegingercowcompany.co.uk

168

### THE GOODMANHAM ARMS

Facebook icon @goodmanhamarms

169

### THE JUG AND BOTTLE BUBWITH

jugandbottle.co.uk

170

### THE MANOR ROOMS ON THE DREWTON ESTATE

themanorrooms.co.uk

171

### THE MARNE RESTAURANT AT BEVERLEY GOLF CLUB

themarnerestaurant.co.uk

172

### THE MILE FARM SHOP, CAFÉ AND CARAVAN SITE

Pocklington, YO42 1TW

themilefarmshop.co.uk

Speciality Yorkshire produce. Choose from hampers, artisan food, unique gifts, specialist local spirits, beers, and ciders. The Mile Café has indoor and outdoor seating, serves wholesome, healthy food and is famous for its Yorkshire Breakfasts.



173

### THE OLD LAMP ROOM

Facebook icon @theoldlamproom

174

### THE OLD STAR (KILHAM) LTD

Facebook icon @theoldstarkilham

175

### THE PIG AND WHISTLE

pigandwhistlebeverley.co.uk



T C Patisserie Ltd

176

### THE PURPLE FISH

Burstwick, HU12 9EB

Facebook icon @ThePurpleFishBurstwick

Local traditional fish and chip takeaway serving the usual favourites, including our own special recipe Hull Patties. Outside dining area. Open Wednesday and Thursday 4.30 - 7pm and Friday and Saturday 11.30am - 1.30pm and 4.30 - 7pm. (7.30pm Friday). Free parking.



177

### THE RAMBLERS' REST

Millington, YO42 1TX

ramblersrestmillington.co.uk

Family run tearoom and B&B in stunning Yorkshire Wolds countryside. Enjoy delicious home cooked food and baking using traditional family recipes and local produce. Amazing walks and cycling. Tearoom: (01759) 305220. B&B: (01759) 303292.



The Ramblers' Rest

178

### THE ROLLING PIN HEDON LTD

therollingpinhedon.co.uk

179

### THE SHIP INN

Sewerby, YO15 1EW

shipinnsewerby.co.uk

Traditional pub grub with a twist, from our 'Feast Your Eyes on our Pies' menu and pizzas to locally caught fish and chips. Renowned for award-winning cask ales and craft beers. Newly refurbished large beer garden. Dog friendly.



180

### THE SPOTTED DUCK TEAROOM

Fitling, HU12 9AL

spottedducktearoom.co.uk

We offer a delicious selection of home cooked food, cakes and pastries. Call in for breakfast, lunch or afternoon tea and enjoy a stroll around the fishing lakes. Outside catering and room hire also available. Closed Mondays.



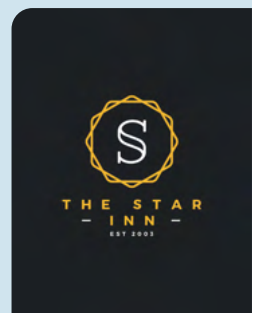
181

### THE STAR INN

Sancton, YO43 4QP

thestaratsancton.co.uk

Whether it's a relaxed Sunday pub lunch, a fine dining experience in the restaurant, wedding ceremony or catering services, the multi award-winning Star Inn, in the heart of the Yorkshire Wolds, offers you a warm welcome and quality service.





182

### THE STAR INN NORTH DALTON

oldmillinns.co.uk/the-star-inn

183

### THE STATION RESTAURANT AND BAR

thestationrestaurantandbar.co.uk

184

### THE WOLD COTTAGE B&B AND SELF-CATERING

woldcottage.co.uk

185

### THE WOLDS CAFÉ AND COFFEE HOUSE

@TheWoldsCafe

186

### THORPE HALL CARAVAN AND CAMPING SITE

thorpehall.co.uk

187

### THREE B'S MICRO PUB

threebspubbrid.co.uk

188

### THREE GABLES BRIDLINGTON

three-gables.co.uk

189

### TICKTON GRANGE

Tickton, HU17 9SH

ticktongrange.co.uk

Championing Wild East Yorkshire, dine in our restaurant; a la carte or our sublime signature seven course tasting menu. Delight in our afternoon tea served in the Hockney Room or, as dusk arrives, head to the terrace and indulge in a cocktail or two.



190

### UOVO FOODS

uovo-foods.co.uk

191

### VANESSA DELICATESSEN, CAFÉ AND BUTCHERY

Beverley, HU17 8BB

vanessadelicafecoffee.co.uk

Award-winning, top quality, local food. Delicious coffee and delightful cake and our breakfast is considered the best in East Yorkshire. Dog friendly, with large outside seating area. Outside catering. For the love of food x



192

### VILLAGE FARM HOLIDAY COTTAGES

villagefarmskipsea.co.uk

193

### VITTLES & COMPANY

vittlesandcompany.co.uk

194

### WEST END FARM COTTAGES

westendfarmcottages.co.uk

195

### WESTFIELD COUNTRY PARK

westfieldcountrypark.co.uk

196

### WHISK, POCKLINGTON

@thisiswhisk

197

### WILLIAM'S DEN

williamsden.co.uk

201

### WOLDS VILLAGE

Bainton, YO25 9EF

woldsvillage.co.uk

Family run business on a beautiful Georgian Farmstead, with tearooms, restaurant, art gallery, award-winning luxury accommodation, tourist information point, food and gift shop and art trail. Our menus and shop focus on local produce.



The Wold Cottage B&B and Self-Catering

198

### WOLD ESCAPES

Southburn, Driffeld, YO25 9AF

woldscapes.co.uk

Home to Yorkshire Wolds Cookery School, we offer a range of cookery classes and host Duke of Edinburgh residential classes. Hold a bespoke event, stay in a glamping cabin with a hot tub or a B&B room.



199

### WOLDS EDGE HOLIDAY LODGES

woldsedge.co.uk

200

### WOLDS GLAMPING AND ASHFIELD BED AND BREAKFAST

Pocklington, YO42 1NW

woldsglamping.co.uk

Wolds Glamping, camping with the unique twist of luxury. Sleep in your own micro world, cosy and peaceful. Alternatively, enjoy home cooked breakfast at Ashfield B&B. Ideally situated halfway between Hull and York.



The Manor Rooms on the Drewton Estate





**WILLIAM'S PIZZERIA & Coffee Shop**

Watch our chefs prepare and cook your favourite pizzas in our wood-fired oven. Finish off with one of our award-winning homemade ice creams. Or enjoy one of our barista-made coffees using our unique blend and a sweet treat from our cake counter.

**YOU CAN JOIN US IN OUR RESTAURANT WITHOUT PAYING TO PLAY**

**WWW.WILLIAMSDEN.CO.UK**  
Please check for opening times



**Welcome to WOLDS EDGE Holiday Lodges**

**www.woldsedge.co.uk**

📍 woldsedgelodges 📧 wolds\_edge 📱 @WoldsEdge

07768 534434 / info@woldsedge.co.uk

Main Street, Bishop Wilton, York, YO42 1RX

## BRIDLINGTON BAY LOBSTER

## IT'S ALL IN THE NAME

Whenever you see the Bridlington Bay Lobster name, it's your assurance that the lobster meets precise quality standards, has been fished with care and comes from a specific area of British waters. You can even trace the individual lobster back to a named Bridlington Bay fishing boat, business or merchant.

## THE LOBSTER CAPITAL OF EUROPE

Lobster fishing has a long history in the Bridlington area and many of today's fleet descend from previous generations who earned their living from the same coastal waters. Through careful management of the

stock and the fishing waters the catch grew and, for over 50 years, Bridlington Bay has landed more lobster than anywhere else in Europe, earning this small area the title of Lobster Capital of Europe.

## THE TRUE SIGN OF QUALITY

You can buy Bridlington Bay Lobster safe in the knowledge that it hasn't been flown in from thousands of miles away and it hasn't been caught somewhere else and been repackaged as 'local'. All the lobsters sold under our brand name are inspected before landing to ensure they aren't undersized or with eggs and the fleet is carefully monitored to ensure they meet required standards.

## SUPPORTING HISTORY, HERITAGE AND INDUSTRY

Bridlington Bay Lobster brings together the entire local lobster industry, from the people at sea pulling up the lobster pots to the fishmongers, retailers, merchants and the cooks putting the lobster on your plate. Our role is to promote these businesses and ensure this part of our island heritage continues for future generations.

Find out more including how to cook, where to buy and where to eat our lobster

**bridlingtonbaylobster.com**



**FRESH FROM THE BAY**



# Explore...

Whether you are looking for a gentle stroll or to pursue a specialist interest, there is a wealth of information available to help you explore the area. The following websites will help you make the most of your time here:

- 🔗 [canalrivertrust.org.uk/pocklington-canal](https://canalrivertrust.org.uk/pocklington-canal)
- 🔗 [minsterway.btck.co.uk](https://minsterway.btck.co.uk)
- 🔗 [nationaltrail.co.uk/yorkshire-wolds-way](https://nationaltrail.co.uk/yorkshire-wolds-way)
- 🔗 [pocklingtonartscentre.co.uk](https://pocklingtonartscentre.co.uk)
- 🔗 [rideyorkshire.org](https://rideyorkshire.org)
- 🔗 [snaithvalewalking.chessck.co.uk/HeritageWalks](https://snaithvalewalking.chessck.co.uk/HeritageWalks)
- 🔗 [top10trails.com/yorkshire-wolds-way](https://top10trails.com/yorkshire-wolds-way)
- 🔗 [transpenninetrail.org.uk](https://transpenninetrail.org.uk)
- 🔗 [visiteastyorkshire.co.uk](https://visiteastyorkshire.co.uk)
- 🔗 [walkingtheriding.co.uk](https://walkingtheriding.co.uk)
- 🔗 [wayoftheroses.info](https://wayoftheroses.info)
- 🔗 [woldrangersway.org](https://woldrangersway.org)
- 🔗 [ywt.org.uk](https://ywt.org.uk)
- 🔗 [yorkshirewinetrail.co.uk](https://yorkshirewinetrail.co.uk)
- 🔗 [yorkshirewoldscycleroute.co.uk](https://yorkshirewoldscycleroute.co.uk)

With beautiful coastline, stunning landscapes and a warm welcome, there is nothing like visiting the East Yorkshire countryside to work up an appetite.

From the tranquil and remote beauty of Spurn Head to spectacular bird watching at Bempton Cliffs, from a trip to any number of fascinating heritage and nature sites to walking or cycling along accessible country paths and quiet waterways, there are any number of ways you can explore the area.



Bempton Cliffs



Flamborough Headland



204  
ADKINS DESIGN  
adkins-design.co.uk

205  
BISHOP BURTON COLLEGE  
Bishop Burton, HU17 8QG  
bishopburton.ac.uk

With magnificent facilities for conferences and meetings, situated in rolling countryside, we provide first class catering for events. We source local ingredients, with milk, fruit, vegetables and meat, where possible, coming from our farm.



206  
CROCKERY 4 HIRE  
crockery4hire.com

207  
DELIFRESH (Food Service Distributor)  
delifreshltd.co.uk

208  
FENWICK FLOWERS  
fenwickflowers.co.uk



Made You Look!

209  
FIELDHOUSE FLOWERS (PICK YOUR OWN)  
fieldhouseflowers.co.uk

210  
FOODIES EVENTS CATERING  
@catering.by.foodies

211  
HOLLER MARKETING  
hollermarketing.co.uk

212  
HULL FOOD PARTNERSHIP  
hullfoodpartnership.org.uk

213  
HULL, HUMBER AND EAST YORKSHIRE HOSPITALITY ASSOCIATION

HEYHA.co.uk @heyhanews

Dedicated to improving the business of hospitality for members in the Humber and East Yorkshire region. Representing 16 key establishments, as well as leading event venues - many passionate about featuring local food and drink.



214  
MADE YOU LOOK!  
York, YO30 5RT

madeyoulookmadeyoustare.co.uk

Create WOW! to attract customers to your business, whether retail or hospitality. Is your business as appealing as it could be? First impressions always count - can I help you with yours?



215  
MCCLARRONS  
mcclarroninsurance.com

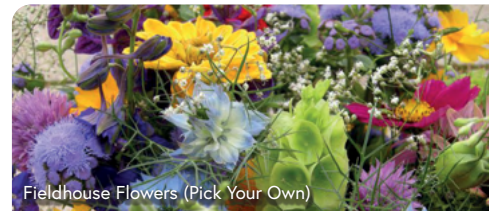
216  
NFU MUTUAL BEVERLEY AND HOLDERNESS AGENCY  
nfumutual.co.uk/beverley

217  
NFU MUTUAL DRIFFIELD AGENCY  
nfumutual.co.uk/driffield

218  
NFU MUTUAL HOWDEN AGENCY  
nfumutual.co.uk/howden

219  
NFU MUTUAL POCKLINGTON AGENCY  
nfumutual.co.uk/pocklington

220  
PENEMENT DESIGN  
penementdesign.co.uk



Fieldhouse Flowers (Pick Your Own)

221  
ROLLITS LLP  
Hull, HU1 1QE

rollits.com

Rollits' experience in the food sector is exceptional and extends beyond the provision of legal services. We provide a wide range of legal advice backed up by practical, hands-on knowledge of the food industry.



Side Oven Bakery

222  
ROOTED IN HULL (HULL CITY FARM)  
rootedinhull.org.uk

223  
ROSEBUD FLOWERS  
@RosebudFlowers

224  
SHEPCOTE DISTRIBUTORS LIMITED  
shepcote.co.uk

225  
SIDE OVEN BAKERY  
sideoven.com

226  
SIRIUS  
Hedon, HU12 8EX

sirius-hull.co.uk

A Local Enterprise Agency, providing free qualified Business Advice, as well as low cost funding for both Start-Ups and Business Growth. Contact (01482) 890146 for details of how we can help your business.





227 **THE HULL PIE**  
V thehullpie.co.uk

228 **THE TIPI PARTY**  
York, YO30 5RT  
@thetipiparty@outlook.com  
thetipiparty.com  
(07899) 910149  
Creating memorable experiences!  
Weddings and events. Kid's cosy corners. Themed sleepovers.  
@thetipiparty



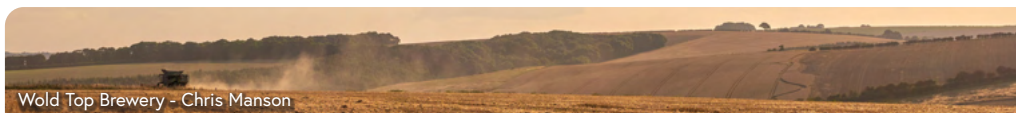
229 **THREE60 MARKETING AND PR**  
three60marketing.co.uk

230 **VHEY TOURISM PARTNERSHIP**  
visithullandeastyorkshire.co.uk

231 **YOUR MARKETING SPECIALIST**  
V yourmarketingspecialist.co.uk



The Hull Pie



Wold Top Brewery - Chris Manson

# INVEST EAST YORKSHIRE



START



LOCATE



GROW

## FROM START-UP ADVICE TO GROWING YOUR BUSINESS

OUR TEAM CAN GUIDE YOU EVERY STEP OF THE WAY

To find out more contact us:

(01482) 391622 investeastyorkshire.co.uk business.support@eastriding.gov.uk

facebook.com/investeastyorkshire @InvestEastYorks @InvestEastYorkshire

linkedin.com/company/invest-east-yorkshire



# Free Membership

JOIN TODAY AND REAP THE BENEFITS



## Qualifying Criteria

East Yorkshire Local Food Network (EYLFN) welcomes membership applications from the following businesses or organisations located in East Yorkshire, Hull and the wider Yorkshire Wolds National Character Area, which fulfil all legal obligations and responsibilities:

- Local food and drink producers, processors and distributors.
- Hospitality and retail businesses committed to sourcing and promoting seasonal, local produce as part of their business offer.
- Organisers of farmers' markets and food festivals featuring local produce.
- Suppliers of goods and services to local food and drink businesses.

## Membership Benefits

- Be part of a larger voice for local food and drink
- Gain new customers and increase sales
- Regular networking events and workshops
- Free basic entry in this guide
- Free listing on [visiteastyorkshire.co.uk](http://visiteastyorkshire.co.uk) or [visithull.org](http://visithull.org)
- Free promotion on social media and via VHEY Tourist Information Centres
- Keep up to date with the latest news and marketing opportunities via our eBulletin
- Member's logo to display

Sign up now at [eryc.link/EYLFN-membership](http://eryc.link/EYLFN-membership) to join VHEY and EYLFN at the same time and start taking advantage of the benefits. Alternatively, if you are an existing VHEY partner and meet EYLFN membership criteria, please email [localfood@eastriding.gov.uk](mailto:localfood@eastriding.gov.uk), confirming that you source local produce as part of your business offer and would like to join EYLFN.



### East Yorkshire Local Food Network (EYLFN)

localfood@eastriding.gov.uk visiteastyorkshire.co.uk @eylfn  
@East Yorkshire Food & Rural Tourism Group

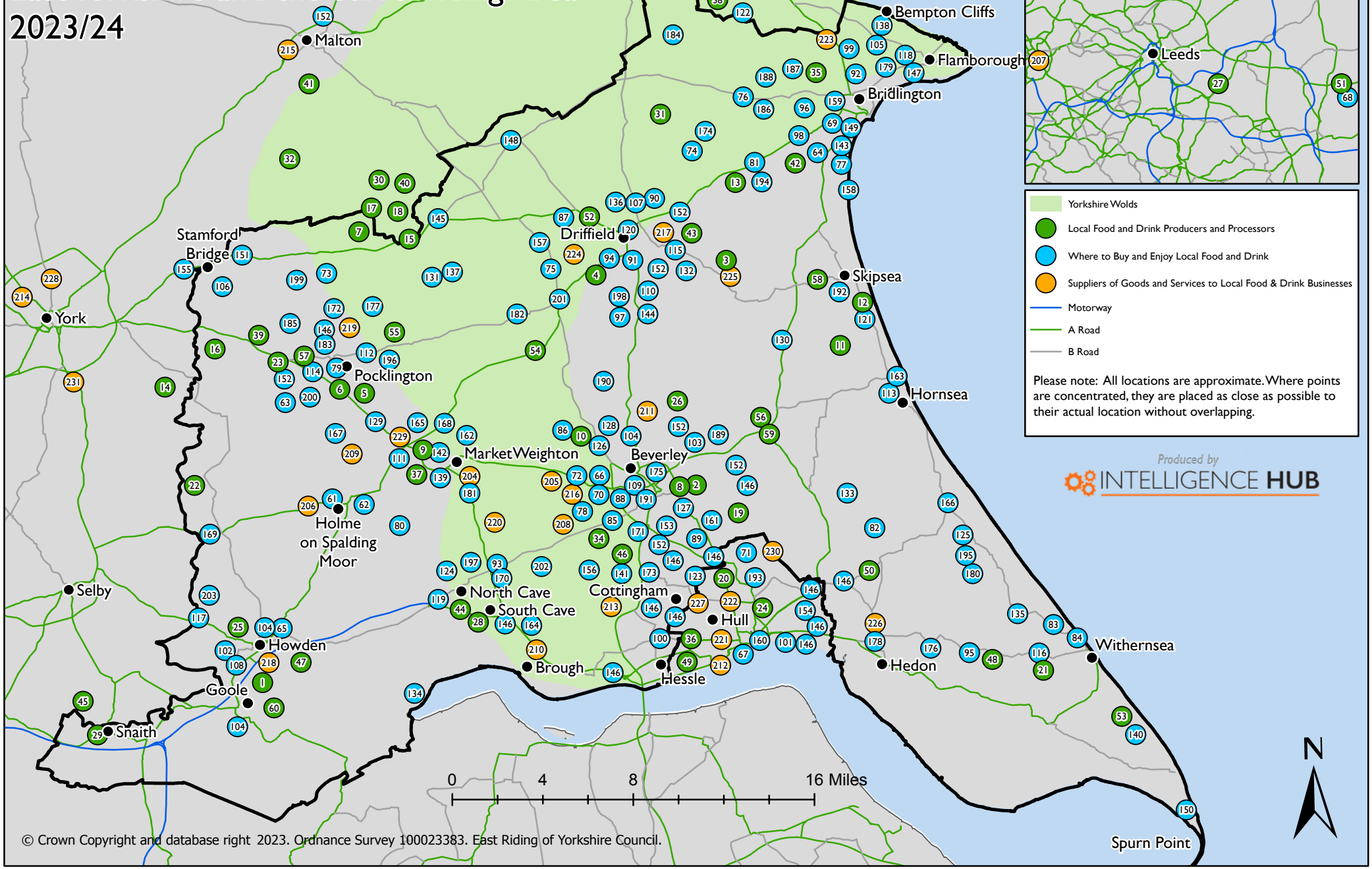
SCAN TO SIGN UP:



East Yorkshire Local Food Network (EYLFN) is a voluntary organisation. Members of the Steering Group give their time voluntarily. The Network is grateful for the support it receives from East Riding of Yorkshire Council through its Rural Team and Visit East Yorkshire.



# Where to Enjoy Local Food and Drink in East Yorkshire and the Surrounding Area 2023/24







# VISIT EAST YORKSHIRE

Different ways  
that you can get  
in touch with us

For information on holidays and short breaks in East Yorkshire, Tourist Information should be your first port of call.

## BEVERLEY TOURIST INFORMATION

Tel: 01482 391672

Email: [beverley.tic@eastriding.gov.uk](mailto:beverley.tic@eastriding.gov.uk)

## BRIDLINGTON TOURIST INFORMATION

Tel: 01482 391634

Email: [bridlington.tic@eastriding.gov.uk](mailto:bridlington.tic@eastriding.gov.uk)

For up to date information follow us on



INSTAGRAM

[@visiteastyorkshire](https://www.instagram.com/visiteastyorkshire)



FACEBOOK

[@Visit East Yorkshire](https://www.facebook.com/VisitEastYorkshire)



TWITTER

[@VisitEastYorks](https://twitter.com/VisitEastYorks)



For more information, downloadable brochures and maps of the area including: **What's on, Where to stay, Beverley, Bridlington, Yorkshire Wolds**

Click on [visiteastyorkshire.co.uk](https://www.visiteastyorkshire.co.uk)



VISIT  
**EAST  
YORKSHIRE**