

VISIT *Effingham* IL • USA A MIDWESTERN GETAWAY



2023 - 2024



@heartlandhealthfood



@fieldsandheels



@lrw1961



@gabriella.alexus



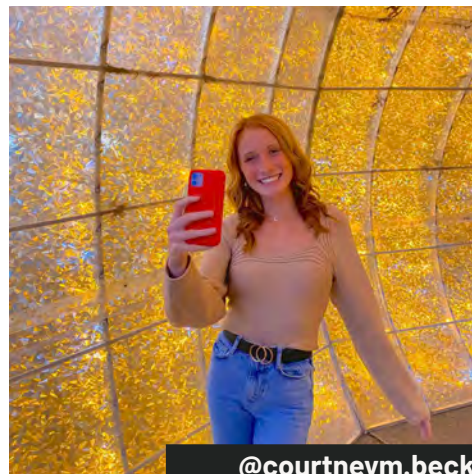
@raisingontheroad



@oklahoma_and_beyond_



@thatfoodiewithglasses



@courtneym.beck



@askchefleo

SHARE
THE
EXPERIENCE

We love seeing your adventures, hearing about your favorite #MadeinEffingham finds and learning more about all of the ways that you enjoy our vibrant community.

Snap a selfie at your favorite local hot spot or — even better — share a hidden gem you've discovered with our @VisitEffingham audience.

Tag us in your photos and use #VisitEffingham to share your experiences with fellow travelers, explorers and those just passing through...

CHEERS, TRAVELERS!

WELCOME TO EFFINGHAM

Located in Central Illinois, where Interstates 57 and 70 meet, Effingham offers the **PERFECT CENTRALIZED LOCATION** to connect with yourself and the people you love. With 16 hotels to unwind at, more than 65 restaurants to indulge in, and countless things to see and do... You'll be hard-pressed to find a reason to leave.

We invite you to take the day off – or better yet, take the whole weekend – and discover what makes this Midwestern getaway so **IRRESISTIBLE** to travelers from all walks of life. Our community is a haven for those looking to 'fill their cup' – both in the metaphorical sense and the literal.

Grab a menu at our farm to table restaurant, Firefly Grill... Catch a once-in-a-lifetime show at the Effingham Performance Center... Find your newest guilty pleasure at Tuscan Hills Winery.

GO AHEAD - "FILL YOUR CUP" AND LET IT "RUNNETH OVER".

However you decide to experience Effingham, we encourage you to soak up the people, the places and the experiences that set us apart. Define *your* getaway...

Safe Travels!



JODI THOELE
Director of Tourism
Visit Effingham



EFFINGHAM CONVENTION AND VISITORS BUREAU

201 E. Jefferson Avenue
Effingham, IL 62401

Monday through Friday
7:30 a.m. to 4:30 p.m.

Toll Free | 800.772.0750
Phone | 217.342.5310
Fax | 217.342.4939

Email | jthoele@effinghamil.com
Website | visiteffinghamil.com

FACEBOOK

facebook.com/visiteffingham

INSTAGRAM

[visiteffingham](https://www.instagram.com/visiteffingham)

Cover Photos by Astrid Johana
Photography

**Images displayed throughout this guide were provided by Visit Effingham and its partners unless otherwise noted.*

The official Visit Effingham guide is produced by the Effingham Convention and Visitors Bureau. The information in this guide is current, as of press time, and all attempts have been made to verify the accuracy of the content. Visit Effingham assumes no liability for incorrect or outdated information.

CONTENTS

- 4** 18 CAN'T-MISS EVENTS
- 5** DEFINE YOUR GETAWAY
- 12** WINE + SPIRITS
- 14** FOODIES WELCOME!
- 20** SHOPPING
- 24** COUPONS
- 25** ARTS + CULTURE
- 28** HOMETOWN HISTORY
- 30** RESEARCH + GENEALOGY
- 32** SPORTS, PARKS + REC
- 36** THE BEST VIEWS...
- 40** WEDDINGS, MEETINGS + EVENTS
- 46** WHERE TO STAY
- 48** VISITOR INFORMATION



Photos by Astrid Johana Photography

Sip Local



Family-Owned



In-House Roastery



Fresh, Delicious Food



In the Heart of Downtown Effingham

M-F: 6a-7p
Sat: 7a-7p
Sun: closed



JOE SIPPERS
C A F E

114 S 4th Street, Effingham | 217-347-2233 | www.joesippers.com



18 CAN'T-MISS EVENTS

HAZEL-JAYNE'S
MAGIC & MISCHIEF: A FAIRY MARKET
June 3, 2023

MID AMERICA MOTORWORKS'
VOLKSWAGEN FUNFEST
June 16-17, 2023

MOCCASIN CREEK FESTIVAL
June 22-25, 2023

LAKE SARA FIREWORKS
July 3, 2023

CITY OF EFFINGHAM
4TH OF JULY FIREWORKS
July 4, 2023

EFFINGHAM ARTISAN FAIR
July 14-15, 2023

EFFINGHAM-JAM BBQ COOKOFF
July 21, 2023

EFFINGHAM COUNTY FAIR
July 30 - August 6, 2023

42ND ANNUAL
MILL ROAD THRESHERMAN SHOW
August 10-13, 2023

SUMMER SUNDOWN MUSIC FESTIVAL
August 25-27, 2023

EFFINGHAM CRUISE NIGHT
September 9, 2023

MID AMERICA MOTORWORKS'
CORVETTE FUNFEST
September 15-16, 2023

EFFINGHAM HOMECOMING PARADE
September 27, 2023

HAZEL-JAYNE'S
MAGIC & MISCHIEF: A WITCH'S MARKET
October 21, 2023

EFFINGHAM SUNRISE ROTARY'S
ANNUAL HALLOWEEN PARADE
October 29, 2023

WALKING THROUGH WONDERLAND:
A VISIT EFFINGHAM EXPERIENCE
November 22, 2023

DOWNTOWN EFFINGHAM'S
HOMETOWN CHRISTMAS
December 2, 2023

THELMA KELLER CONVENTION CENTER'S
34TH ANNUAL BRIDAL EXPO
January 14, 2024

*For A Full Listing Of Local Events,
Please Visit Our Online Event Calendar!*

DEFINE YOUR GETAWAY



Kiki's Paddleboards at Lake Sara
Photo by Astrid Johana Photography
Styling by The Red Thread Boutique

THE CROSS

The Cross at the Crossroads is certainly **"AN ENGINEERING WONDER"** but its greatest miracle is its call to travelers from every faith, background and circumstance, reminding them of the positive values shared and cherished by all.

Soaring nearly 200 feet into the Midwestern sky, The Cross at the Crossroads is a landmark for the **19 MILLION TRAVELERS** who pass through Effingham on Interstates 57 and 70 each year.

The campus includes a Ten Commandments display surrounding the base of the structure, a concrete walking path, featuring life-size statues of various times in Jesus' life, bench seating, and a Welcome Center, featuring a chapel, reception area, restrooms, refreshment center and media room where visitors can view a video of the construction and dedication of The Cross.

The Cross at the Crossroads is a project of The Cross Foundation, a not-for-profit organization that strives to offer messages and programs designed to **PROMOTE THE VALUES OF FAITH** and family daily living.

The site is host to several community events, including an Easter sunrise service and various memorial services. The Welcome Center at The Cross is open from 10 a.m. to 4 p.m., November to April, and 10 a.m. to 7 p.m., May to October. For more information, visit www.crossusa.org.

217.347.2846
1904 W. Pike Avenue, Exit 159





FIREFLY GRILL

*Named one of Enjoy Illinois' top
Delicious Destinations!*

Firefly Grill is an **AWARD-WINNING**, eco-friendly roadhouse on the shores of Lake Kristie. Chef Niall Campbell and his wife Kristie own and operate this oasis of farm to table cuisine in the heart of the Midwest.

Firefly's ever-changing menu boasts fresh, sustainable seafood, prime steaks, brick-oven pizzas and soulful, American-fresh cuisine.

Firefly is so passionate about sourcing the best ingredients that they grow many themselves in their **ON-SITE BEYOND ORGANIC FARM**. What they can't grow themselves, they source locally from artisan farmers and foragers.

A made-from-scratch, additive-free kids menu is available, as well, with healthy, organic choices to pair with favorites like mac-n-cheese and free-range, local chicken fingers.

Firefly, additionally, offers group tours and cooking demonstrations, and their private rooms and beautiful grounds make this the perfect place for special events... especially weddings!

Firefly Grill is also dog-friendly, so four-legged clients can join their families for lunch on the porch, or for a walk around the lake to stretch their legs.

INDOOR + OUTDOOR SEATING is available to those who desire a waterfront view; clients travel for miles just to feed Firefly's famous fish!

Reservations are recommended, but not required, and are available by phone or online at www.ffgrill.com/reservations.



217.342.2002

1810 Ave. of Mid America, Exit 160



JOHN BOOS & CO.

Factory Showroom & Outlet

Known for their **BOOS BLOCKS** cutting boards crafted of solid quality American Hardwoods (maple, walnut and cherry), John Boos products can be seen on major cooking shows, including Chopped, Masterchef and The Kitchen, and they are used by chefs and celebs such as Bobby Flay, Gordon Ramsay, Alton Brown, Alex Guarnaschelli, Giada De Laurentiis, Michael Symon, Ina Garten, Jet Tila, Drew Barrymore, Kylie Jenner and many more.

John Boos & Co. is a leader in manufacturing butcher block prep surfaces for celeb chefs and **FOODIES** (cutting boards, butcher blocks, countertops, kitchen carts and prep tables), as well as custom fabricated stainless steel equipment for the food service industry (chef counters, compartment sinks, work tables and more). John Boos is the only company in the U.S. that has a wood and metal facility on location. Boos has been in continuous business since 1887 and is the **"OLDEST INDUSTRY IN EFFINGHAM"**.

The John Boos Factory Showroom & Outlet is a must-visit where one can buy the same products the **PROS** use. Their cutting boards can also be engraved for wedding or corporate gifts. The store is open to the public from 8:30 a.m. to 5:30 p.m. Monday through Friday and 8 a.m. to 4 p.m. on Saturdays. Closed on Sundays.

Customers can also order select John Boos products online through the online store for the Factory Showroom & Outlet at www.shop.butcherblockspecialist.com.

217.347.7790

1703 Ave. of Mid America, Exit 160



NATIONAL, REGIONAL + LOCAL PERFORMERS take the stage at the Effingham Performance Center! The EPC is a not-for-profit theater operated by the Arts Connection of Central Illinois and hosts a wide variety of programs each year.

With 1,518 seats, the auditorium has outstanding sight lines, comfortable seating and **EXCELLENT ACOUSTICS** making every live performance enjoyable. Enjoy a wide variety of refreshments from the concessions counter and the fully-stocked bar as you take in the show.

MORE THAN 30 PERFORMANCES are presented each season, featuring genres such as Country, Rock, Contemporary, Comedy, Dance, Bluegrass and Family-friendly.

A few of this past season's nationally recognized acts include LeAnn Rimes, 38 Special and John Michael Montgomery. Complete show information and a list of upcoming events can be found on the Effingham Performance Center's website, www.the-epc.org.

Tickets may be purchased online at www.ticketmaster.com/epc or by calling 217.540.2788... See you at a show!

217.540.2788
1325 Outer Belt West, Exit 160



MIDAMERICA MOTORWORKS

Mid America Motorworks welcomes car clubs, tour groups and **AUTOMOTIVE ENTHUSIASTS** to its expansive campus that houses MY Garage Museum, the Install Center, the Corvette and VW Parts Warehouse, the Funfest Dome and the Corporate Office.

MY Garage Museum and Retail Store showcases many unique and exclusively rare cars, most of them privately-owned Corvettes and Air-cooled Volkswagens. Many featured cars were used for research, experimental-concept projects, iconic films and much more. The car displays and memorabilia are constantly expanding and revolving, with new things to see each visit!

In addition to **RARE CARS**, MY Garage is home to thousands of collectibles and antiques from the MY Treasures collection: neon signs, antique gas pumps, collectible model cars, vintage advertising and posters, and even vintage Mid America Motorworks equipment.

Are you in search of Corvette or Air-cooled Volkswagen parts for your prized classic? Ask the sales representatives at MY Garage or visit their website at www.mamotorworks.com to find the parts you need to finish that long-anticipated restoration project.

Mid America Motorworks's expansive campus also may be the perfect venue for your next event; the museum and campus have hosted many car club meetings, birthdays, weddings, reunions, business receptions and more. To book an event here call Mid America at **217.540.4277**.

Mid America Motorworks is the place where your Corvette and Air-cooled Volkswagen needs and passions come to life. Through their catalog, website and retail store, find Corvette and VW parts, apparel, board games, furniture and drinkware to fit every car enthusiast needs.

With the MY Garage Museum and Retail Store, restored picturesque 1910 gas station, Hot Wheels photoshoot, annual Corvette and VW Funfest events, and large amphitheater with outdoor seating, Mid America Motorworks is the **ENTERTAINMENT DESTINATION** for everyone!

MY Garage Museum's hours of operation are Monday through Friday, 8 a.m. to 5 p.m. and Saturdays, from 8 a.m. to 4 p.m. Turn into Gate 2 and keep right to find the museum building and corporate headquarters.



217.540.4277

454 Big Block Drive, Exit 162

MORE FUN FOR THE FAMILY

ACCURACY FIREARMS

1300 S. Raney St., Ste. 4, Exit 159
www.accuracyfirearms.com
217.342.2767

BENT KEY ESCAPE

101 S. Linden St., Exit 159
www.bentkeyescape.com

EFFINGHAM AXE THROWING

306 S. 4th St., Ste. B, Exit 159
www.effinghamaxe.com
217.344.9827

EFFINGHAM COUNTY SPORTSMAN'S CLUB

14295 Sportsman Dr., Exit 160
www.effinghamsportsmansclub.com
217.663.2790

EVERGREEN MINI GOLF

1202 N. Maple St., Exit 160
217.821.3922

GOPHER'S GRILL - ARCADE

206 W. Jefferson Ave., Exit 160
www.gophersgrill.com
217.342.GOPH
217.342.4674

PAGEL SILVER DOLLAR LANES

2300 S. Banker St., Exit 159
www.silverdollarlanes.com
217.342.3939

RMC CINEMAS

51 Village Square Mall, Exit 159
www.rmccinemas.com/effingham
217.347.5997

EFFINGHAM'S NEWEST HOTEL

OPENED IN JUNE 2020

- ✓ FREE Hot Breakfast
- ✓ Business Center
- ✓ Fitness Center
- ✓ Meeting Facilities
- ✓ Complimentary WiFi
- ✓ Indoor Heated Pool
- ✓ Jacuzzi & Sauna

IHG ONE
REWARDS



BOOK TODAY:
(217) 994-9949

1604 W. FAYETTE AVE. EXIT 159
WWW.HIEXPRESS.COM/EFFINGHAMIL

LEGACY HARLEY DAVIDSON + RV

Legacy Harley-Davidson is a great place to stock up on the latest Harley-Davidson gear, and also, an attraction that brings thousands of visitors to Effingham each year.

Legacy's Harley Barn, located just off I-57 and I-70, houses new and pre-owned motorcycles, along with clothing, merchandise, parts and much more! For additional information or to shop for Legacy-specific gear, please call or visit www.legacyhd.com.

Visit www.legacyrv.com to learn more about Legacy's RV dealership and services, like on-going maintenance and customization.

Hours for both facilities are from 9 a.m. to 6 p.m., Tuesday through Friday and 9 a.m. to 5 p.m. on Saturdays.

217.342.3494
1315 Althoff Drive, Exit 162



WINE DOWN...

VILLAGE WINE + SPIRITS

Village Wine & Spirits offers the area's largest and finest selection of premium wines, spirits and luxury beers at very competitive prices. Enjoy your drink of choice at their full-service bar or, on a nice night, at a table with a **ROOFTOP VIEW** of Downtown Effingham.

Village Wine is open Monday and Tuesday, 10 a.m. to 10 p.m., Wednesday and Thursday, 10 a.m. to midnight, Friday and Saturday, 10 a.m. to 1 a.m. and Sunday, noon to 7 p.m. For more information, or to view their calendar of events, visit www.effinghamvillagewine.com.

217.347.0477
109 S. Banker Avenue, Exit 159



TUSCAN HILLS WINERY



Established in July 2011, by Wes and Wanda Pitcher, Tuscan Hills Winery is a beautiful winery with an **OLD-WORLD TUSCAN FEEL**.

Enjoy tasting any of their **TEN** different Tuscan Hills wines with help from their knowledgeable staff. As everyone's sensitivities to the smells and tastes of wines are different, the staff is trained to help guests compare the subtle differences in each wine until they find a favorite!



If wine isn't for you, Tuscan Hills also offers an excellent variety of sangrias, wine slushies, seasonal beers, liquors and non-alcoholic beverages. Hot pizzas and Italian baguettes are served all day.

Tuscan Hills is a **FAMILY-FRIENDLY AND PET-FRIENDLY** winery where you are invited to "come as our guest, leave as our friend."

Visit www.effinghamwinery.com for a list of upcoming events and live music. The winery is open, Monday through Thursday, 11 a.m. to 9 p.m., Friday and Saturday, 11 a.m. to 11 p.m. and Sunday, 1 to 7 p.m. Closed major holidays.



217.347.WINE (9463)
2200 Historic Hills Drive, Exit 162



A close-up photograph of a plate of Mexican food. The plate contains two tacos filled with meat, lettuce, and radish slices. Next to the tacos is a portion of orange rice, a serving of black beans topped with white cheese, and a side salad with shredded lettuce and diced tomatoes. In the background, a glass of water and a bottle of beer are visible on a table.

**FOODIES
WELCOME!**

Taquería Don Pedro
Photo by Astrid Johana Photography

FIREFLY GRILL

1810 Ave. of Mid America, Exit 160

Firefly boasts a soulful, seasonal menu created with herbs and vegetables from their on-site, beyond-organic farm. Ingredients they don't grow or find locally are sourced from sustainable purveyors who care for them as ardently.

217.342.2002

www.ffgrill.com

What to order here: Anything in-season, as it comes straight out of the garden!

GABBY GOAT AMERICAN PUB & GRILL

303 E. Fayette Ave., Exit 159

Gabby Goat is a premiere restaurant and sports bar, serving steaks, burgers, wraps, gourmet hot dogs, horseshoes, nachos and more. Their mission? To provide guests with the "Greatest Of All Times." Eat, drink & get your goat on!

217.342.4628

www.gabbygoat.com

*What to order here: Turn up the heat!
Try the "Flaming Goat" Burger.*

JOE'S PIZZA & PASTA

115 E. Jefferson Ave., Exit 159

Joe's Pizza and Pasta is a hometown favorite serving fine Italian dishes, including pizza, pasta, submarine sandwiches, desserts and more. Enjoy delicious homemade sauces crafted with the Trupiano family's secret recipes.

217.347.JOES (5637)

www.orderjoes.com

*What to order here: "The Lunch Special"...
A personal pizza, salad + drink, made to order.*

JOE SIPPERS CAFE

114 S. 4th St., Exit 159

Enjoy a hand-brewed coffee or tea, or perhaps, a freshly-baked treat! The Joe Sippers team makes, bakes and creates what they can with quality ingredients like local stone-ground flour, local free-range eggs, all-natural deli meats and lofty portions of nutritious produce. Stop in, check out the goods, and enjoy your cafe experience at Joe Sippers Cafe!

217.347.CAFE (2233)

www.joesippers.com

What to order here: A handcrafted cup of Joe... and perhaps a freshly-baked treat.

NIEMERG'S STEAKHOUSE

1410 W. Fayette Ave., Exit 159

Niemerg's Steakhouse & The Brass Rail Lounge is a locally-owned, independent restaurant that has served countless customers for more than 35 years. Enjoy their made-from-scratch entrees, salad bar and baked goods.

217.342.3921

www.niemergssteakhouse.com

What to order here: A slice of Niemerg's FAMOUS homemade pie... Around 1,000 pies are sold each week!

TAQUERIA DON PEDRO

307 W. Jefferson Ave., Ste. 101, Exit 159

Taqueria Don Pedro is a locally-owned, family-operated source for fresh, authentic Mexican cuisine. There's a reason these recipes have been passed down through generations! Enjoy flavorful dishes and warm, friendly service.

217.347.2216

www.taqueriadonpedroeffingham.us

What to order here: The Taco Dinner, as pictured, adjacent. Enjoy with a side of chips + queso.



FULL-SERVICE DINING

BUFFALO WILD WINGS

1001 Ave. of Mid America, Exit 160
217.540.9464

CHASER'S BAR & GRILL

1809 W. Fayette Ave., Exit 159
217.347.5336

CHILI'S

1300 Ave. of Mid America, Exit 160
217.294.6248

CHINA BUFFET

1500 W. Fayette Ave., Exit 159
217.342.3188

CLASSIC THAI RESTAURANT

108 S. Henrietta St., Exit 159
217.342.6436

CRACKER BARREL COUNTRY STORE

1101 Ave. of Mid America, Exit 160
217.347.7130

DENNY'S RESTAURANT

1307 N. Keller Dr., Exit 160
217.342.4543

EL RANCHERITO

1311 N. Keller Dr., Exit 160
217.342.4753

FIREFLY GRILL

1810 Ave. of Mid America, Exit 160
217.342.2002

FUJIYAMA JAPANESE STEAK HOUSE

1302 Ave. of Mid America, Exit 160
217.342.3833

GABBY GOAT AMERICAN PUB & GRILL

303 E. Fayette Ave., Exit 159
217.342.4628

GOPHER'S GRILL

206 W. Jefferson Ave., Exit 159
217.342.4674

HERON COVE

14843 N. Park Rd.
217.881.9047
Open Seasonally

IRON HORSE CAFÉ

101 S. Merchant St., Exit 159
217.347.7191

JOE'S PIZZA & PASTA

115 E. Jefferson Ave., Exit 159
217.347.JOES(5637)

LOS AMIGOS MEXICAN RESTAURANT

205 N. Keller Dr, Exit 159
217.994.9143

LUCIA'S ITALIAN KITCHEN

400 W. Clark Ave., Exit 159
217.207.0226

MARIA'S TACO HOUSE

3001 S. Banker St., Exit 159
217.347.3200

MIDWAY BAR & GRILL

18924 US Hwy 45, Exit 162
217.844.2111

NIEMERG'S STEAKHOUSE

1410 W. Fayette Ave., Exit 159
217.342.3921

PINKY'S

8726 E. Marina Rd., Exit 160
217.868.2628
Open Seasonally

PUERTA VALLARTA

3005 S. Banker St., Exit 159
217.342.3177

TAQUERIA DON PEDRO

307 W. Jefferson, Ste. 101., Exit 159
217.347.2216

TGI FRIDAYS

1208 N. Keller Dr., Exit 160
217.342.9499

TK GRILLE

1301 Ave. of Mid America, Exit 160
217.540.7716

CASUAL DINING

ARBY'S

1401 Keller Dr., Exit 160
217.342.6615

BLISSFUL BITES

115 S. Banker St., Exit 159
www.loveblissfulbites.com

BURGER KING

1308 Keller Dr., Exit 160
217.342.4721

CHINA EXPRESS

112 S. Banker St., Exit 159
217.347.0304

CHIPOTLE

1207 N. Keller Dr., Exit 160
217.347.3800

CRUISER'S

806 E. Fayette Ave., Exit 159
217.240.7257

CULVER'S OF EFFINGHAM

1510 W. Fayette Ave., Exit 159
217.347.4986

DAIRY QUEEN BRAZIER

1411 S. Banker St., Exit 159
217.342.9432

CAFFEINATED CRAVINGS

FOX HOLLER COFFEE

1200 S. Banker St., Exit 159
217.690.4432

GINGER ALE'S

302 S. Walnut St., Exit 159
217.347.7766

HARDEE'S

1505 W. Fayette Ave., Exit 159
217.347.3455

HOMEWOOD GRILL

1002 W. Fayette Ave., Exit 159
217.342.4677
Open Seasonally

JERSEY MIKE'S SUBS

1000 W Fayette Ave, Exit 159
217.790.4116

JIMMY JOHN'S

401 Keller Dr., Exit 160
217.342.7296

JOE SIPPERS CAFÉ

114 S. Fourth St., Exit 159
217.347.CAFE (2233)

KFC

1304 Ave. of Mid America, Exit 160
217.342.4276

LONG JOHN SILVER'S

1309 Keller Dr., Exit 160
217.347.7553

LICKIN' MY CHICKEN & PULLIN' MY PORK

10325 IL-33, Exit 160
217.994.3551

MARIA'S TACO HOUSE

3001 S. Banker St., Exit 159
217.347.3200

MCALISTER'S DELI

1507 Hampton Dr., Exit 160
217.240.7175

MCDONALD'S - 3 locations

2911 S. Banker St., Exit 159
217.342.4933
1304 Keller Dr., Exit 160
217.342.2355
2500 N. Third St., Exit 162
(open 24 hours)
217.342.2605

PANDA EXPRESS

1203 N. Keller Dr., Exit 160
217.342.6699

PANERA BREAD

1601 Damron Ct., Exit 160
217.240.3001

POPEYE'S LOUISIANA KITCHEN

Travel Centers of America, Exit 160
217.347.7183

STEAK 'N SHAKE

1211 Keller Dr., Exit 160
217.210.0386

SUBWAY - 3 locations

404 S. Henrietta St., Exit 159
217.347.8881
1204 Ave. of Mid America, Exit 160
217.342.5551
2408 N. 3rd St., Exit 162
217.347.0701

TACO BELL

1201 N. Keller Dr., Exit 160
217.342.5500

WENDY'S

1210 N. Keller Dr., Exit 160
217.342.4420

DAYLIGHT DONUTS

207 N. Keller Dr., Exit 160
217.342.4288

DUNKIN DONUTS

Travel Centers of America, Exit 160
217.347.7183
Petro Stopping Center, Exit 159
217.347.0480

FOX HOLLER COFFEE

1200 S. Banker St., Exit 159
217.690.4432

GINGER ALE'S

302 S. Walnut St., Exit 159
217.347.7766

THE HUMAN BEAN

406 N. Keller Dr., Exit 159/160
217.342.0319

JOE SIPPERS CAFE

114 S. Fourth St., Exit 159
217.347.CAFE (2233)

PANERA BREAD

1601 Damron Ct., Exit 160
217.240.3001

STARBUCKS

1700 Ave. of Mid America, Exit 160
217.342.5577






Photo by
Carrie Goldstein
Photography

SAVORY OR SWEET...

DOMINO'S PIZZA

1001 W. Fayette Ave., Exit 159
217.347.7788

JOE'S PIZZA & PASTA

115 E. Jefferson Ave., Exit 159
217.347.JOES (5637)

LITTLE CAESAR'S

200 S. Henrietta St., Exit 159
217.347.0491

LUCIA'S ITALIAN KITCHEN

400 W. Clark Ave., Exit 159
217.207.0226

PAPA JOHN'S

100 N. Henrietta St., Exit 159
217.347.4744

PIZZA MAN

604 W. Jefferson Ave., Exit 159
217.347.7766

SBARRO'S PIZZA

Travel Centers of America, Exit 160
217.347.7183

BLISSFUL BITES

115 S. Banker St., Exit 159
www.loveblissfulbites.com

CULVER'S OF EFFINGHAM

1510 W. Fayette Ave., Exit 159
217.347.4986

DAIRY QUEEN BRAZIER

1411 S. Banker St., Exit 159
217.342.9432

HOMWOOD GRILL

1002 W. Fayette Ave., Exit 159
217.342.4677

GINGER ALE'S

302 S. Walnut St., Exit 159
217.347.7766

JOE SIPPERS CAFE

114 S. Fourth St., Exit 159
217.347.CAFE (2233)

SMOOTHIE KING

1603 Ford Ave., Exit 160
217.342.3401

A FINAL FOUR FINALIST FOR "AMERICA'S BEST CARD SHOP"

Since 1992, Baseball Card Connection has served Central Illinois and collectors, worldwide, by providing high quality trading cards and sports memorabilia.

With over 10 million cards in inventory and a 6,000-square-foot showroom, this is a must-stop destination for sports fanatics! Browse their eBay and Beckett online stores for a preview...

Buy. Sell. Experience the 'Connection'.

right now on
ebay



313 W. Jefferson Avenue, Effingham | 217-342-2539 | baseballcardconnection.com

A group of five young women are walking through a boutique, smiling and carrying shopping bags. The woman on the far left is wearing a white patterned sweater, black jeans, and white boots. The woman next to her is wearing a pink sweater, blue jeans, and brown boots. The woman in the center is wearing a white short-sleeved top, black pants, and white lace-up boots. The woman next to her is wearing a black sweater, blue jeans, and pink sandals. The woman on the far right is wearing a white puffer jacket, blue jeans, and black boots. The boutique has a rustic feel with wooden floors, track lighting, and various items on display, including a sign that says "FARMER'S MARKET".

SHOPPING
IS ALWAYS
A GOOD IDEA

Favorite Things in Downtown Effingham
Photo by Astrid Johana Photography
Styling by The Red Thread Boutique

NORTHSIDE

BATH & BODY WORKS

1603 A Ford Ave., Exit 160
217.500.3345

BOHO CHIC CLINIQUE

1207 Network Centre Dr., Exit 160
217.347.2646

COUNTRY PEDDLERS

1709 W. Ave. of Mid America, Exit 160
217.347.1002

FAMOUS FOOTWEAR

1603 B Ford Ave., Exit 160
217.240.3009

GLIK'S BOUTIQUE

1302 Ave. of Mid America, Exit 160
217.342.9503

GOODWILL

1004 N. Keller Dr., Exit 160
217.220.6547

HEARTLAND HEALTH FOOD STORE

1301 W. Evergreen Ave. Ste. 3A, Exit 160
217.775.0201

HIBBETT SPORTS

1605 B Ford Ave., Exit 160
217.342.2500

HOBBY LOBBY

1006 N. Keller Dr., Exit 160
217.342.1048

JIM BEAM'S CORNER CATTERY

18086 US-45, Exit 162
844.687.2287

JOHN BOOS & CO.

FACTORY SHOWROOM & OUTLET
1703 Ave. of Mid America, Exit 160
217.347.7790

KAY JEWELERS

1602 Ford Ave., Exit 160
217.342.5415

KOHL'S, FEAT. SEPHORA

1600 N. Ford Ave., Exit 160
217.347.5140

MAURICE'S

1605 A Ford Ave., Exit 160
217.342.4234

REINIGER JEWELERS

1304 Thelma Keller Ave. #102, Exit 160
217.803.8903

TREASURE BINS LIQUIDATION

1705 B Ave. of Mid America, Exit 160
309.306.1206

CENTRAL/ DOWNTOWN

AMERICA'S GROOVE RECORD STORE

210 N. Banker St., Exit 159
217.347.7625

ANDERSON'S JEWELRY

107 E. Jefferson Ave., Exit 159
217.342.2010

THE BEANSTALK BOUTIQUE

314 W. Jefferson Ave., Exit 159
217.821.1971

BASEBALL CARD CONNECTION

313 W. Jefferson Ave., Exit 159
217.342.2539

BIKE AND HIKE

300 W. Jefferson Ave., Exit 159
217.342.2453

BOBBALOO'S

700 W. Fayette Ave., Exit 159
217.690.4372

BOOTS + SOLES

320 W. Jefferson Ave., Exit 159
217.342.6833

MADE IN EFFINGHAM

JOHN BOOS & CO. FACTORY SHOWROOM & OUTLET

Looking for a gift that will last a lifetime? A Boos block or board is the perfect gift for so many special occasions! Add a touch of personalization by getting your locally-made find engraved on-site.

1703 Ave. of Mid America, Exit 160
217.347.7183

TUSCAN HILLS WINERY

Take home a few bottles of your newest guilty pleasure. This winery is locally-owned and operated and bursting with options for every palette... Cheers!

2200 Historic Hills Dr., Exit 162
217.347.9463

JOE SIPPERS CAFE

Take home a reminder of your stay here by picking up a bag of Joe Sippers coffee before you go. Roasted in-house, Joe Sippers coffee beans are available in artisan blends, as well as single-origin coffee beans.

114 S. 4th St., Exit 159
217.347.2233



BURKLANDS FLORIST + GIFTS

311 S. Rinehart St., Exit 159
217.342.4184

CATCHING GLIMPSES**4D ULTRASOUND**

106 W. Washington Ave., Exit 159
217.250.2505

CHESTNUT FAMILY MUSIC

110 S. Front St., Exit 159
217.342.1016

DAISIES & DENIM BOUTIQUE

108 W. Washington Ave., Exit 159
618.843.5020

DOWNTOWN POPCORN CO.

314 W. Jefferson Ave., Exit 159
217.347.7676

FAVORITE THINGS

302 W. Jefferson Ave., Exit 159
217.994.9204

HAZEL-JAYNE CRYSTALS + GIFTS

112 E. Section Ave., Exit 159
312.339.6863

HUMBLED SOUL BOUTIQUE

115 S. Banker St., Exit 159
217.994.0697

THE LAST STRAW

215 W. Jefferson Ave., Exit 159
217.347.2641

MILLENNIUM ACCESSORIES

113 E. Jefferson Ave., Exit 159
217.342.2277

NIEBRUGGE FURNITURE

500 W. Fayette Ave., Exit 159
217.347.7401

NOAH'S ARK PET SHOPPE

117 W. Jefferson Ave., Exit 159
217.347.6624

THE RED THREAD BOUTIQUE

111 W. Jefferson Ave., Exit 159
217.994.9525

SUGAR N SPICE & EVERYTHING NICE

302 E. Washington Ave., Exit 159
217.343.6799

TEN BROOKE LEANNE

401 Keller Dr., Suite 5, Exit 159
217.994.9050

THE THOMAS SHOPPE

200 W. Jefferson Ave., Exit 159
217.342.2733

VAYDA JANE BRIDAL BOUTIQUE

205 N. 4th St., Exit 159
217.500.7614

VILLAGE WINE & SPIRITS

109 S. Banker St., Exit 159
217.347.0477

WILD ROSE BRIDAL

100 E. Washington Ave., Exit 159
217.259.4838

THE WOODEN SPOOL

804 S. Henrietta St., Exit 159
217.347.9669

W.S. BROOM & CO.

304 W. Jefferson Ave., Exit 159
217.342.3688

SOUTHSIDE

HOME ACCENTS

1901 S. Fourth St., Ste. 16, Exit 159
217.347.3354

LIFELINE CHRISTIAN BOOKS & GIFTS

1901 S. Fourth St., Ste. 10, Exit 159
217.342.3406

MERLE NORMAN COSMETICS

1901 S. Fourth St., Ste. 13, Exit 159
217.347.0831

PARTY WORX

1104 S. Banker St., Exit 159
217.347.2222

PINS + PINE

1901 S. 4th St., Ste. 16, Exit 159
217.343.9275

VILLAGE SQUARE MALL

S. Rt. 45, Exit 159
217.347.0623

Crossroads Vendor Market:

618.780.1748

Effingham Computer Sales &
Service: 217.690.9718

Exclusively Dance: 217.347.5425

The Journey Church: 217.821.2199

La Petite Boutique & Fine Decor:
217.994.6786

Night Terrors: 618.843.3463

Pawsley's: 217.500.1795

RMC Cinemas: 217.347.5997

Smith Archery: 618.841.5959

ANTIQUES + CONSIGNMENT

AMERICA'S GROOVE RECORD STORE

210 N. Banker St.
217.347.7625

BANKER ST. ANTIQUES & ODDITIES

117 S. Banker St.
217.342.2680

BASEBALL CARD CONNECTION

313 W. Jefferson Ave.
217.342.2539

**CATHOLIC CHARITIES'
SECOND HAND ROSE**

1502 E. Fayette Ave.
217.857.1482

**COUNTRY PEDDLERS ANTIQUE &
CRAFT MALL**

1709 W. Ave. of Mid America
217.347.1002

GOODWILL INDUSTRIES

1004 N. Keller Dr.
217.220.6547

IT'S ALMOST HOME...**USED FURNITURE & DECOR**

1607 S. Banker St.
217.342.6001

KATHY'S RESALE SHOP

1901 S. Fourth St., Suite 12
217.347.3666

LA PETITE BOUTIQUE AND**FINE DÉCOR**

Village Square Mall, South Rt. 45
217.994.6786

NEARLY NEW FASHIONS

802 S. Willow St.
217.347.0203

SILK PURSE THRIFT STORE

908 W. Fayette Ave.
217.342.3319



Follow @redthreadboutique on Instagram
and share your Red Thread finds using #RTBstyle

Downtown Effingham
Photo by Astrid Johana Photography
Styling by The Red Thread Boutique



Boos[®] BlockS

JOHN BOOS FACTORY
SHOWROOM & OUTLET

- Cutting Boards
- Butcher Blocks
- Gift Packs
- Kitchen Countertops
- Gourmet Kitchen Carts
- Butcher Block Tables & Islands
- Kitchen Tools & Accessories
- Stainless Steel Foodservice Equipment

CUSTOM
LASER
ENGRAVING
AVAILABLE!

20% OFF
one single retail priced item

In-Store Only. May not be used online.
Coupon must be present at time of purchase.
May not be combined with other offers.
EXPIRES 12/31/2023

VISIT OUR WEBSITE!
BUTCHERBLOCKSPECIALIST.COM

1703 AVENUE OF MID-AMERICA, EFFINGHAM, IL 62401
PH: (217) 347-7790 • MON-FRI: 8:30AM-5:30PM • SAT: 8AM-4PM

VISITOR COUPONS

Check out all the exclusive discounts Effingham has to offer!



MAKE A PURCHASE OF \$20 (OR MORE)
AND RECEIVE \$5 OFF YOUR TOTAL PURCHASE

313 W. Jefferson Ave., Effingham | 217.342.2539
www.baseballcardconnection.com
May only be used once. EXP. 12/31/23



HEARTLAND
HEALTH FOOD STORE

BUY ANY 20 OZ. FRESH-PRESSED
JUICE AND RECEIVE A FREE
12 OZ SMOOTHIE OF THE DAY

1301 W. Evergreen Ave., Ste 3A Effingham
www.heartlandhealthyfoods.com
May only be used once. EXP. 12/31/23



RECEIVE ONE FREE BOTTLE OF 16 OZ. MYSTERY OIL
WITH A \$50 OR MORE IN-STORE PURCHASE

1703 Ave. of Mid America, Effingham | 217.347.7790
www.butcherblockspecialist.com
May only be used once. EXP. 12/31/23



BUY ONE CUSTOM T-SHIRT; GET ONE OF
EQUAL OR LESSER VALUE FREE

1315 Althoff Dr., Effingham | 217.342.3454
www.legacyhd.com
May only be used once. EXP. 12/31/23



NEW MEMBERS GET 25% OFF ANY
MEMBERSHIP PACKAGE FOR 1 MONTH

214 W. Jefferson Ave., Effingham | 217.663.8409
www.exchange1890.com
May only be used once. EXP. 12/31/23



BUY 1 WINE TASTING; GET ONE FREE

2200 Historic Hills Dr., Effingham | 217.347-9463
www.effinghamwinery.com
May only be used once. EXP. 12/31/23



REACH 100 POINTS IN OUR
LOYALTY PROGRAM AND RECEIVE \$10 OFF

112 E. Section Ave., Effingham | 312.339.8863
hazeljaynesupplies@gmail.com
May only be used once. EXP. 12/31/23



SCULPTURES ON THE AVENUES

We invite you to explore the sculptures that have transformed the City of Effingham's Downtown avenues into a **WALKABLE ART GALLERY**! Nearly 30 sculptures, created by some of the Midwest's best-known and unknown artists, bring life to the streets of Effingham as part of the annual Sculptures on the Avenues outdoor exhibition.

The exhibition will begin its twenty-fifth year in Spring 2023. Sculptures on the Avenues is a **SELF-GUIDED** walking tour that begins at Effingham City Hall, located at 201 E. Jefferson Ave. From there, the exhibition winds in and out of Downtown Effingham.

The Sculptures on the Avenues program began in 1997 when the Effingham Community Committee for the Arts formed and raised over \$60,000 to commission Leonardo Nierman's Flame of Hope. The Flame of Hope stands prominently in front of the west entrance of City Hall and is featured on the walking tour.

Each year, new sculptures are chosen with the hope of capturing the viewer's imagination and appealing to a variety of individuals. The pieces feature a medley of both whimsical and striking pieces and include realistic and abstract work, as well. The sculptures are placed to be **ACCESSIBLE AND INTERACTIVE**.

Residents and visitors wholeheartedly embrace the program. Several sculptures have found permanent homes in Effingham and the surrounding areas. An informative guide, which facilitates a walking tour, is available at Effingham City Hall. Please contact the Effingham Tourism Office with any questions or interest in the program's pieces or artists. Guided tours are available upon request.

217.342.5310
Downtown Effingham



From left, 'Take a Bow' by Gregory Mendez; 'Toadstool' by Todd Kingery and 'Sunflower' by Lorelei Sims



FRYE POTTERY

Frye Pottery is located in a beautiful country setting. Artists Tim and Pam Frye have been professional potters for over 30 years. They produce award-winning ceramic art, as well as functional stoneware pottery designed for everyday use. Frye Pottery also has a sculpture garden for visitors to enjoy. Frye Pottery is open by appointment. Visit www.fryepottery.com for more information.

217.868.5583

19746 N. 1060th St., Shumway

ALWERDT'S GARDENS & SCULPTURE PARK

A botanical treasure house and outdoor gallery, Alwerdt's Gardens and Alwerdt Artworks and Sculpture Park are one of Effingham area's hidden gems. Located in Altamont, just one mile south off of Interstate 70, Exit 82, the business and park cover several acres of land with their display gardens and half-mile sculpture walk. Open April through November. Visit www.alwerdtsgardens.com for more information.

618.483.5798

3238 E. 800th Ave., Altamont



EFFINGHAM ARTISAN FAIR *July 14 & 15, 2023*

The annual Artisan Fair is a **2-DAY FESTIVAL** with plenty of fun for the entire family! This event, held on the beautiful grounds at **TUSCAN HILLS WINERY**, continues to be a favorite with new artists and activities added each year. Make plans to attend and show your support for the **ARTS** in Effingham! Visit www.effinghamartisanfair.org for more information.

2200 Historic Hills Dr., Exit 162

INDOOR GALLERIES

EFFINGHAM ART GUILD

The Effingham Art Guild is home to dozens of award-winning artists. The Art Guild has traveling exhibitions that are open to the public at several different locations in the community.

These exhibits change every four months and can be found at the following locations:

Sarah Bush Lincoln Bonutti Clinic
1303 W. Evergreen Ave.

Effingham County
Courthouse Museum
100 E. Jefferson Ave.

Effingham Surgical Associates SC
900 W. Temple Ave. #101

Heartland Human Services
1200 N. 4th St.

Effingham Performance Center
1325 Outer Belt West

Effingham Public Library
200 N. Third St.

Joe Sippers Café
114 S. Fourth St.

For more information, please email
effinghamart@gmail.com.

EFFINGHAM FARMERS MARKET

Located in Downtown Effingham, you'll find the Effingham Farmers Market. Here, you'll encounter **LOCAL MAKERS**, singer-songwriters, farmers, coffee roasters, carpenters, storytellers and a community rich in talent and diversity.

The market provides our community and visitors with **FRESH**, locally-grown food, handmade crafts, live music, quality **ARTISAN GOODS** and more.

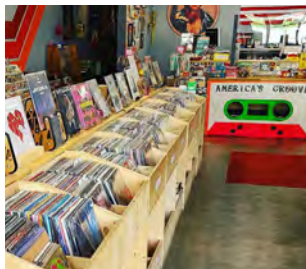
We encourage you to pick up a cup of freshly-brewed coffee from market vendor, **FOX HOLLER COFFEE**, and stroll around the historical courthouse square...

Visit every Saturday morning from 8 a.m. to 12 p.m., May through October.

Downtown Effingham, Exit 159
US 45 and Jefferson Ave.



Effingham Farmers Market
Photos by Astrid Johana Photography



Shop · Eat · Play

Stop by and #ExperienceDowntownEffingham.
Visit our Facebook Page: Experience Downtown Effingham



HOMETOWN HISTORY

EFFINGHAM COUNTY COURTHOUSE

FEATURING THE EFFINGHAM COUNTY CULTURAL CENTER & MUSEUM ASSOCIATION

The historic Effingham County Courthouse was built in **1871** on the site of the 1850s courthouse, which tragically burned to the ground in March 1869, reducing most of the county's records to ash. The courthouse, located on the square in **DOWNTOWN EFFINGHAM**, is listed on the National Register of Historic Places. The historical structure was built in Second Empire style and is made of brick, stone and wood with 18-inch outside walls. Special features of the building include stone window headers, with keystones above each window, and a mansard roof with dormers. The building was the working courthouse for Effingham County until 2007. Monuments recognizing the history of the city and county can be viewed on the lawn, which is the site of many special events throughout the year.

The Effingham County Cultural Center and Museum Association came into existence as the result of a desire to **"PROMOTE INTERPRETIVE CULTURE AND HISTORY"** as a means of increasing public awareness of the history of Effingham County and the National Road. The Effingham County Courthouse Museum features two rooms devoted to a specific military experience, which both change throughout the year. The second floor features a courtroom, turned ballroom, that is available for events. The Courthouse Museum also has a room dedicated to transportation and the railroads in Effingham County. The exhibit features various railroad artifacts throughout time.

The museum is open on Tuesdays and Saturdays from 10 a.m. to 2 p.m., March through December. The museum is closed to the general public in January and February, except for special programming or by appointment. Donations are appreciated. Visit www.effinghamcountymuseum.org for more information.

217.240.2471
Downtown Effingham, Exit 159

EFFINGHAM COUNTY VETERAN'S MEMORIAL

On Veteran's Day, November 11, 1991, the first three stones of the Memorial were dedicated in honor of all Effingham County veterans. The "Memorial Names Stone" addition was dedicated on Armed Forces Day, May 19, 2012. This memorial has nearly 4,000 names of men and women veterans from all five branches of the armed forces. The stones were designed and etched with the past, present and future in mind. Each year, more names can and will be added. It is an on-going memorial with space for over 9,000 names.

The Memorial is not only a tribute, it is our history: a standing memorial to the living and the dead, our neighbors, families and friends, who have served to preserve, protect and secure peace for our nation. Some served on foreign shores, some within our own borders, some died, some never saw action, some were drafted and some enlisted. All served. All gave themselves to our country. We are forever thankful for their sacrifice.

217.342.3655

Downtown Effingham, Exit 159

DR. CHARLES M. WRIGHT HOUSE MUSEUM

Described as a time capsule, this 18-room, historic home features the furnishings and collections of three generations of the Wright family. Listed in the National Register of Historic Places, the 1889 home was built by one of the first medical doctors in Altamont. The self-sufficient home had indoor plumbing, central heating and gaslights in 1889.

The second generation to live in the home was Dr. Wright's son, who practiced medicine for 65 years in Altamont. Charles M. Wright III was a lawyer for Shell Oil until retirement, when he moved into his family home. At his death, the home was left in a trust to be preserved and maintained.

The house is open for tours every Sunday, May through September, from 2 to 4 p.m. and by appointment, as well. For additional information, call the number, below, email scott@wrightmansion.org or visit www.wrightmansion.org.

618.483.6397

3 W. Jackson Ave., Altamont, Exit 82

MONASTERY MUSEUM

This museum is a prism into the history of the settlers of the Teutopolis region and the Franciscans who ministered to them. View a dazzling panorama of early life in this German Catholic community, founded in 1838, including a multitude of religious artifacts left by the Franciscans who first arrived in 1858.

The three priests and six brothers who arrived in 1858 set about building a parish and friary. Today, that monastery houses antique Bibles, hand-scribed books and hundreds of other items representative of daily religious life. The furnishings, clothing, toys, utensils and elaborate documents on display are works of art in themselves. These artifacts offer a poignant and incredibly complete look at the lives of Teutopolis' first residents.

Hours are from 12:30 p.m. to 4 p.m., on the first Sunday of each month, from April to November, and by appointment. Call or email monasterymuseum-st.francis@yahoo.com.

217.857.3586

110 S. Garrett St., Teutopolis, Exit 159



HISTORIC NATIONAL ROAD

It was a superhighway of dirt, rock and timber. In 1806, President Thomas Jefferson signed legislation creating a National Road funded solely by the federal government, a first at the time...

With westward expansion on the lips of a nation, busting at the seams, this road would provide a route from Cumberland, Maryland to Pennsylvania, Virginia (later West Virginia), Ohio, Indiana and Illinois. Because of its point of origin, it was often referred to as the Cumberland Trail, although other popular names included the National Pike, the National Trail and the National Road.

The National Road rose from the transportation scrapbook to become the blueprint for an ocean-to-ocean route known as U.S. Route 40. Today, the Illinois National Road stretches 164 miles, from the Indiana border to the Mississippi River in East St. Louis and encompasses seven counties: Clark, Cumberland, Effingham, Fayette, Bond, Madison and St. Clair. Many of these communities owe their origins to the National Road, as it brought settlers who turned prairieland into civilization.

The National Road Association of Illinois promotes the unique attractions the road offers. An "Art & Architecture" guidebook was created to highlight the art and architectural treasures located in communities along the National Road. In addition, the National Road Association has placed 21 kiosks placed in 21 communities along the Illinois National Road. The kiosks provide an overview of the National Road history and timeline, a map of the National Road and individual community history that includes local sites of interest. Effingham's kiosk sits on the grounds of the Effingham County Courthouse Museum.



For more information on the roadway, or on upcoming events, visit www.nationalroad.org or call 888.268.0042.

HEART THEATRE

Across the street from the old courthouse is the Heart Theatre, a 1930s landmark. The theater is one of two examples in Effingham of the Art Deco style that was popular from 1920 to 1940. The cream and maroon terra-cotta tiles are a perfect match for the neon and marquee lights. Visit www.thehearttheatre.org for more information.

135 E. Jefferson Ave., Exit 159/162

RESEARCH + GENEALOGY

EFFINGHAM PUBLIC LIBRARY

The Suzette Brumleve Memorial Effingham Public Library houses over 60,000 books, magazines and audio-visual materials and has an annual circulation of over 190,000 items. They also offer a wide variety of programs and services for both children and adults, including the Effingham Genealogy Society.

A microfilm and microfiche reader/ printer, as well as magazines, census records, genealogy files and reference materials are available through the library. Members of the Genealogy Society are available from 10 a.m. to 12 p.m. on Wednesdays & Saturdays to assist those exploring the history of our region. The library is open Monday through Thursday, 8 a.m. to 7 p.m., Friday, 8 a.m. to 6 p.m., and Saturday, 9 a.m. to 1 p.m. It is closed on Sundays. Visit www.effinghamlibrary.org for more information.



Effingham Public Library
Photo by Astrid Johana Photography

OAKRIDGE CEMETERY

This non-denominational City cemetery is the final resting place of many fascinating figures from Effingham's past... One, being Ada Kepley, the first female law graduate in the United States. She was an ardent advocate of women's rights, a friend of Susan B. Anthony and a talented writer.

Another character, Col. John J. Funkhouser, a Civil War veteran, was offered the office of Secretary of War by President Grant, but he declined. He later became the first Mayor of Effingham. Col. Funkhouser's father, Senator Presley Funkhouser, had considerable influence in the decision to move the county seat from Ewington to Effingham, spelling the demise of Ewington.

Yet another, Mary (Mother) Newcomb, came to Effingham during the Civil War after her husband, Hiram, enlisted in the 11th Illinois Infantry. She was 44 years old at the time. After Hiram was wounded in battle, Mary brought her husband back to Effingham, but he died shortly after on February 26, 1862. Fulfilling his dying wish, Mary returned to the regiment to nurse the sick and wounded soldiers until the end of the war. Mary actually visited the White House and had a visit on the porch with Mr. Lincoln. ***Meet these and many other fascinating figures at the Oakridge Cemetery!***

E. Jefferson Ave., Exit 159/162



SPORTS, PARKS + RECREATION



RICHARD E. WORKMAN SPORTS & WELLNESS COMPLEX

The mission of the Richard E. Workman Sports & Wellness Complex is to give back to Effingham, and its surrounding communities, by supplying services that promote a

"FAMILY ATMOSPHERE, HEALTH & WELLNESS."

With multiple hardwood courts, an 8-lane competition lap pool, a 3-lane elevated indoor track and a variety of other amenities, including a close proximity to baseball and softball fields, this **STATE-OF-THE-ART** facility is the **PERFECT PLACE** to host your next sporting event or tournament!

A day pass is available to purchase for guests who are visiting short-term.

Visit www.workmansportscomplex.com for more information.

217.342.3481
1301 N. Maple St., Exit 160

COMPLEX AMENITIES

8 LANE COMPETITION
LAP POOL

ZERO-DEPTH ENTRY
RECREATIONAL POOL WITH
2 ADDITIONAL LAP FITNESS
LANES

LAZY RIVER

3 LANE ELEVATED INDOOR
TRACK; 11 LAPS = 1 MILE

2 REGULATION BASKETBALL
COURTS

3 REGULATION VOLLEYBALL
COURTS

2 AEROBICS STUDIOS WITH AN
EXTENSIVE CLASS OFFERINGS

BRAND NEW STATE-OF-THE-
ART CARDIO EQUIPMENT, EACH
FEATURING A PERSONAL TV

NEARLY 7,000 SQ. FT. FITNESS
FACILITY

KIDS PROGRAMMING

CERTIFIED PERSONAL
TRAINERS ON STAFF

EFFINGHAM PARK DISTRICT

EVERGREEN HOLLOW PARK

This 42-acre park features a wide variety of playground equipment, two large pavilions, baseball and softball diamonds, tennis courts and more! The park also has a scenic and educational tree walk, featuring approximately 75 species of trees indigenous to Illinois.

Kluthe Memorial Pool, the park's aquatic complex, includes a large leisure pool, water slides, play equipment and a lap pool. The complex is open from noon to 7 p.m., Memorial Day to Labor Day.

Evergreen Mini Golf, adjacent to Evergreen Hollow Park, makes for a wild outing with the family! Try your skills on the course, and enjoy refreshing snacks and drinks from The Purple Hippo, on-site. Call 217.821.3922 for hours, as they change, according to season.

W. Evergreen Ave., Exit 160

HENDELMEYER PARK

Hendelmeyer Park is a 20-acre park that includes a skate park, four lighted tennis courts, three lighted softball diamonds, two playground areas and a picnic area. Ron Diehl Recreation Center is also located on this property and houses three basketball courts, two meeting rooms and a kitchen that can be reserved for a fee.

1906 S. Fourth St., Exit 162

COMMUNITY PARK

Community Park is a 35-acre park that features a disc-golf course, four lighted ball diamonds, four lighted tennis courts, large playground areas, three outdoor basketball courts and pavilions/ picnic areas.

E. Temple Ave. and N. Pembroke Ave., Exit 162

HARMONY PLAYGROUND

This new, inclusive playground is accessible to all children, adults and veterans. Harmony Playground features wheelchair-friendly ramps, accessible swings, as well as musical elements designed to help children who face sensory challenges. Accessible, temperature-controlled bathrooms, with adult-sized changing tables, are also on-site.

1301 N. Maple St., Exit 160

CALL 217.342.4415 OR VISIT WWW.EFFINGHAMPARKDISTRICT.ORG FOR MORE INFORMATION.



OTHER COMMUNITY PARKS...



HEARTLAND
HEALTH FOOD STORE



Exceptional foods & relationships cultivated.

heartlandhealthyfoods.com | 217.775.0201

BLISS PARK

This cozy, city block-sized park features large trees, a beautiful garden area and a fountain. It is also conveniently located just minutes from the interstates. Additionally, there are multiple pavilions, playground areas and outdoor basketball courts. It is a lovely place to enjoy a picnic with family or friends.

217.342.5300

Fifth St. and Clark Ave., Exit 159

LAKE SARA FOREVER BEACH PLAYGROUND

Children and parents alike will enjoy this new addition to the Lake Sara Pearson Peninsula! This playground is just the first of several phases in the Lake Sara Forever Project, a project aimed to preserve and enhance Lake Sara for generations to come.

Kids (as well as adventurous parents) can explore a larger-than-life pirate ship in the 5 to 12-year-old playground, in addition to a swingset, climbing ropes, a 2 to 5-year-old fort area and much more - designed for all ages and abilities. An accessible fishing dock, 9-hole disc golf course and 4-hole accessible disc golf course were also completed with the park.

www.lakesaraforever.com

15250 N Beach Rd., Exit 160

GOLF COURSES

CARDINAL GOLF COURSE

Cardinal Golf Course is an 18-hole public golf course that borders Lake Sara. The course was remodeled to include several new holes and landscaping, along with a driving range, putting green and chipping green.

An outside pavilion is available for hosting parties and outings. The course also has a clubhouse for visitors to enjoy when taking a break. The course's season runs from March to December.

217.868.2860

15737 N. Beach Rd., Exit 160

FORE-WAY CHALLENGE GOLF COURSE

Fore-Way Challenge Golf is a 9-hole public course located near Lake Sara, just minutes from Effingham and Anthony Acres. The course offers formidable fairways, exacting greens and six major water hazards to test your skill level.

Call to take advantage of special packages or to plan your family or business outing.

A driving range, putting green and clubhouse are also on site for visitors to enjoy. Visit www.forewaygolfcourse.com for more information.

217.868.5418

16041 N. 1000th St., Exit 160

GETTING IN TOUCH WITH NATURE...

ALWERDT'S GARDENS

Stroll Alwerdt's four acres, and view 1,200 varieties of fragrant, uniquely landscaped herb, perennial and ornamental gardens.

Visit the gift shop and garden center, which feature hundreds of interesting plants and gifts.

You can also tour Alwerdt's Sculpture Park, adjacent to the gardens. Alwerdt's is open April through October.

618.483.5798

3238 E. 800th Ave., Altamont, Exit 82

www.alwerdtsgardens.com

BALLARD NATURE CENTER

Just minutes from the city, but a world away, Ballard Nature Center is home to dozens of species of birds and wildlife. Natural prairie, wetlands, butterfly and hummingbird gardens, ponds and creeks round out the outdoor experience at Ballard.

Ballard Nature Center is a terrific outdoor experience in every season. Spring wildflowers bloom throughout the grounds, and the natural prairie is in full glory come summer. Fall foliage is not a cliché when you can walk under the trees and touch their colorful leaves. In winter, follow the tracks of wildlife that share the trails.

Dioramas and interactive exhibits, inside the Visitors Center, offer entertainment and education on the flora and fauna of this region. A naturalist is on staff throughout the week, and all trails and outdoor areas are open from dawn until dusk. The Visitor Center is open March to November with limited hours in the winter months.

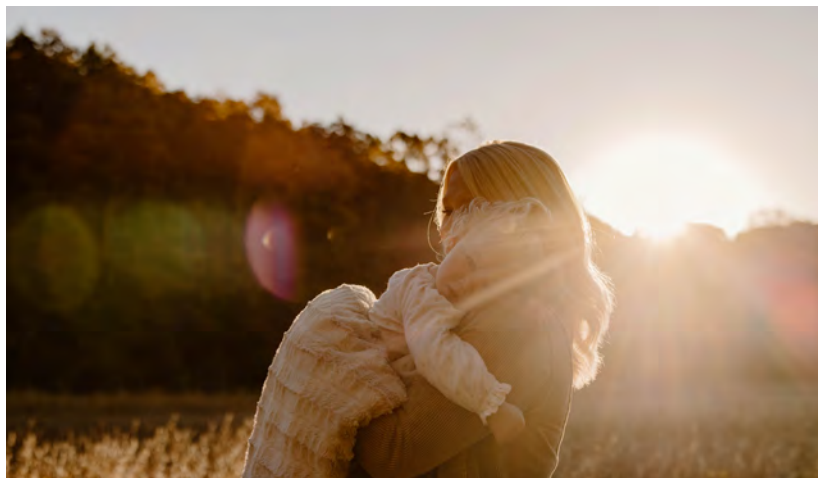


Photo by Astrid Johana Photography



HAZEL
JAYNE

Your one-stop, local shop
for crystals + metaphysical
supplies

◆◆◆

112 E. Section Street, Effingham IL

*Join our Loyalty
program and
receive \$10 off
when you earn
100 points.



@hazeljaynesupplies

618.483.6856

5253 E. US Hwy 40, Altamont, Exit 82

www.ballardnaturecenter.org



THE BEST VIEWS...



Kiki's Paddleboards at Lake Sara
Photo by Astrid Johana Photography

LAKE SARA

Lake Sara is a **QUIET COVE** at dawn, where the only sound is the whirl of a casting reel and the gentle splash of the fly hitting the water's surface; a sunny afternoon slalom skiing behind a powerboat or running along the beach; a family picnic, near the pirate ship playground, or a family reunion with fried chicken and the works under one of the pavilions. All of these scenarios - and more - exemplify the **UNIQUE, CALMING SURROUNDINGS** of Lake Sara.

Fishing, especially, is a treasured pastime at the lake, which houses a wide variety of fish, including: black bass, crappie, bluegill, channel catfish and walleye. Other popular features include a **PUBLIC BEACH**, an all-new pirate ship playground, disc golf course, a boat-launching area, boat rentals, camping, golf courses, delicious food and drinks and picnic areas.

Come visit this **640-ACRE** recreational lake, nestled into a wooded shoreline, encircled by a winding road. Stay for a day, a week or a season, and enjoy the shores of Lake Sara...

Visit www.effinghamwaterauthority.org for more information.

217.347.7333
15250 N. Beach Rd., Exit 160

KIKI'S PADDLEBOARDS

The mission of Kiki's Paddleboards is to make paddleboarding and kayaking at Lake Sara available to as many people as possible.

All rentals include paddles, a life vest and an introductory lesson, if needed.

\$20 for a 90-minute rental
\$35 for a 3-hour rental

Call the number, below, for more information.

217.347.PADL (7235)
Lake Sara, Effingham, Exit 160



Kiki's Paddleboards at Lake Sara
Photo by Astrid Johana Photography
Styling by The Red Thread Boutique



LARSON'S LANDING

Spend the day at Larson's Landing! The landing is just a short walk to the beach and is home to Pinky's, an open-air, waterfront restaurant, and the Rusty Reel Bar and Boat Yard - a full service bar that also offers boat rentals, tackle, fuel and more.

Open seasonally, Pinky's hosts live acoustic music each Thursday evening and Sunday afternoon. Stop for a gourmet ice cream from The Green Creamery ice cream parlour and greenhouse and enjoy the music, the view and the good vibes.

Larson's also includes a wooded stage area, where both intimate concerts and music festivals - like Moccasin Creek Festival and Summer Sundown Music Festival - take place throughout the season. Here at Larson's Landing, you'll find that life truly is "better at the lake!"

217.868.2791
8724 E. Marine Dr., Exit 160

CAMPING

CAMP LAKEWOOD

This 19-acre RV campground features 75 wooded campsites on the north shores of Lake Pauline, along with a variety of cabins and tent camping. Campsites offer water, sewer, electricity, cable and WiFi.

Parking areas provide long, level, pull-through convenience. 30/50-amp service is also available. The clubhouse is available to guests only. Visit www.camlakewoodcampground.com for more information.

217.342.1111 or 217.342.6233
1217 W. Rickelman Ave., Exit 160/162

ANTHONY ACRES RESORT

Enjoy picturesque views of Lake Sara from the comfort of this wooded resort. Amenities are abundant, and include grills for cooking your fresh catch and private decks. Each cabin features an efficiency kitchen, as well.

For your convenience, Anthony Acres Resort is just five minutes away from Effingham's many fine restaurants and entertainment venues. Stay awhile! Visit www.anthoniacres.com for more information.

217.868.2950
15286 N. Resort Rd., Exit 160

LAKE SARA CAMPGROUND

Lake Sara Campground welcomes families and pets of all sizes. The campground is open for RV and coach camping, cabin rentals and tent camping!

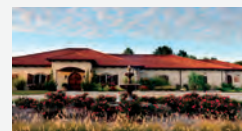
217.868.2964
15482 Wildwood Dr., Exit 160



WINE TASTINGS
OUTDOOR SEATING
FLATBREADS + PIZZAS
RV & PET FRIENDLY



OPEN 7 DAYS
A WEEK!



TUSCAN HILLS
WINERY

www.effinghamwinery.com | 2200 Historic Hills Drive, Effingham, IL



TREC RECREATION TRAILS

The TREC trail system is a **PUBLIC TRAIL** designed to create recreational opportunities. The trails provide a great place for visitors to exercise, whether it is riding bikes, roller blading or walking.

The first phase of the trail was completed in 2010. The Ryan Wolters Memorial Bridge was completed to connect the two sections of phase one.

The John and Fran Schultz Bridge - phase three - was completed in the fall of 2014. The remaining portion of phase three was completed in 2015. Phase four was completed in 2016. TREC and the City of Effingham completed phase five of the trail in recent years. This phase links the current trail system (phase one through four) to the pedestrian bridge over Interstates 57/70.

The TREC mission is to develop a **"COUNTYWIDE, MULTI-USE TRAIL SYSTEM"**; educate the communities on the benefits of trails and promote an active lifestyle by providing recreational activities. *Trail maps are available at the Visit Effingham Office, located at 201 E. Jefferson Avenue.*

217.342.5310



EFFINGHAM WEDDINGS

THE PERFECT SPOT TO TIE THE KNOT

Weddings, in essence, are about bringing people together... which can be challenging when family and friends are scattered across different cities, or even states!

Located off I-57 and I-70, Effingham is the perfect **CENTRALIZED LOCATION** for Midwest weddings and other events like engagement parties, showers, rehearsal dinners, etc.

We welcome you to explore all that Effingham has to offer for couples looking to **CELEBRATE THEIR LOVE...** Find venues and vendors you can trust, tourism and city information, and even helpful Welcome Bags for your guests!

Follow Effingham Weddings on social media at @effinghamweddings or visit www.effinghamweddings.com to learn why Effingham is...

"THE PERFECT SPOT TO TIE THE KNOT!"

217.342.5310

201 E. Jefferson Ave., Exit 160



Firefly Grill
Photo by Astrid Johana Photography



EFFINGHAM EVENT CENTER | 217.342.6565
www.effinghameventcenter.com



FIREFLY GRILL | 217.342.2002
www.ffgrill.com



THELMA KELLER CONVENTION CENTER | 217.347.5115
www.thelmakellerconventioncenter.com



TUSCAN HILLS WINERY | 217.347.9463
www.effinghamwinery.com

Venue Photos by
Steffen Harris Photography



Steffen Harris Photography

*"One of Downstate's
only conference centers
that accommodates
groups of 1,500 or more
with a connecting hotel!"*

THESE FABULOUS AMENITIES ARE ALL ON PROPERTY!

- Convention facilities for groups from 10 to 1,500
- 10,500-square-foot ballroom accommodates 1,500
- Thirteen breakout rooms for 85 people each
- Highly praised banquet facilities, expos & trade shows
- Close to TGI Fridays & shopping
- Connected to the award-winning Holiday Inn hotel



THELMA KELLER CONVENTION CENTER

*One of Central Illinois' Finest Meeting & Banquet Centers
Bringing Luxury & Elegance to You!*

EFFINGHAM, ILLINOIS

1202 N. KELLER DR., EXIT 160
217.347.5115
WWW.KELLERCONVENTIONCENTER.COM

HOLIDAY INN
1301 AVE. OF MID-AMERICA
RESERVATION LINE: 217.540.7777



EFFINGHAM
PERFORMANCE
CENTER

Your Entertainment Destination



1325 Outer Belt West | Effingham, IL 62401

www.TheEPC.org



EFFINGHAM EVENT CENTER

www.effinghameventcenter.com

Facility includes:

- Three meeting rooms (first and second meeting rooms combine to total 10,000 square feet)
- Third meeting room totals 1,800 square feet
- 100 hotel rooms within walking distance

217.342.6565

1501 W. Fayette Ave., Exit 159

FAIRFIELD INN & SUITES

www.marriott.com/mtoef

Facility includes:

- One large meeting room that can be divided
- Holds up to 85 guests (1,890 total square feet)
- 68 hotel rooms connected

217.540.5454

1111 N. Henrietta St., Exit 160

HAMPTON INN & SUITES

www.effinghamsuites.hamptoninn.com

Facility includes:

- Meeting Room A is 600 square feet
- Meeting Room B is 650 square feet
- 75 people fit in each meeting room (over 1,250 square feet)
- 92 hotel rooms connected

217.540.5050

1305 N. Keller Dr., Exit 160

FIREFLY GRILL

www.ffgrill.com

Facility includes:

- The Wine Room seats up to 12 guests; fully private with audio visual equipment
- Camden's Corner Suite seats up to 16 guests conference style or 24 guests at rounds of 6 with 360 degree views of the property; fully private with audio visual equipment
- The Sunset Room seats up to 55 guests; fully private with audio visual equipment, an outdoor dock and beautiful views
- The Firefly Farmacy seats up to 30 guests; semi-private with indoor and outdoor dining spaces
- The Garden Outdoor Tent area reserves the restaurant grounds and seats up to 500 people
- The Ultimate Buy-out reserves the entire restaurant and grounds with seating for up to 600

217.342.2002

1810 Ave. of Mid America, Exit 160



LAKE SARA PAVILIONS

www.effinghamwaterauthority.org

Facility includes:

- Large open banquet room
- Kitchen area
- Boat dock and outdoor decks

217.994.4682

Two locations on Lake Sara, Exit 160

HOLIDAY INN EXPRESS & SUITES

www.hiexpress.com/effinghamil

This facility features a meeting room that holds up to 80 guests. Hotel rooms are available on-site.

217.994.9949

1604 W. Fayette Ave., Exit 159

THELMA KELLER CONVENTION CENTER

www.thelmakellerconventioncenter.com

Facility includes:

- Seven meeting rooms
- 600 guests fit in largest room (10,500 sq. ft.)
- Over 20,000 total square feet
- 110 hotel rooms on-site
- 17 breakout rooms
- Two grand ballrooms
- Exhibit hall capable of holding up to 110 booths

217.347.5115

1202 N. Keller Dr., Exit 160

TUSCAN HILLS WINERY

www.effinghamwinery.com

Facility includes:

- The winery seats 120 guests; 180 under the extended patio
- The Stellar Cellar seats 85 guests or 100, including bar + couch area
- The Fireplace Area seats up to 50 guests
- The North Vineyard Patio seats 65+ guests

217.347.9463

2200 Historic Hills Dr., Exit 162

VILLAGE WINE & SPIRITS

www.effinghamvillagewine.com

Facility includes:

- The Register Room holds up to 75 guests
- The conference/ meeting room holds up to 30 guests
- The Event Center holds up to 95 guests
- The Rooftop Deck holds up to 45 guests

217.347.0477

109 S. Banker Ave., Exit 159

XCHNG (THE EXCHANGE 1890)

www.exchange1890.com

Facility includes:

- Small Venue Rental holds 10-25 guests
- Midsize Venue Rental holds 26-50 guests
- Large Venue Rental holds 51-75 guests

217.663.8409

214 W. Jefferson Ave., Exit 159

NIGHT LIFE

BIG PAPA'S

101 E. Jefferson Ave.
217.690.4245

BRASS RAIL LOUNGE

1410 W. Fayette Ave.
217.342.3921

CHASER'S SPORTS BAR

1809 W. Fayette Ave.
217.347.5336

GABBY GOAT

303 E. Fayette Ave.
217.342.4628

GOPHER'S GRILL

206 W. Jefferson Ave.
217.342.4674

THE HALL BAR & PATIO

1501 W. Fayette Ave.
217.342.6565

THE MIDWAY BAR & GRILL

18924 Us Hwy 45
217.844.2111

THE OFFICE

105 E. Jefferson Ave.
217.347.4920

THE ORCHARD INN

800 N. Third St.
217.342.9025

THE RUSTY REEL

8724 E. Marine Dr.
217.868.2791

TAP OUT LOUNGE

1304 Thelma Keller Ave. Ste. 106
217.342.5515

TUSCAN HILLS WINERY

2200 Historic Hills Dr.
217.347.9463

VILLAGE WINE & SPIRITS

109 S. Banker St.
217.347.0477

Three of Effingham's Finest Hotels



FAIRFIELD INN & SUITES

1111 N. Henrietta St., Exit 160
217.540.5454 or 800.288.5150
www.marriott.com/mtoef

- 68 GUEST ROOMS WITH 21 SUITES
- INDOOR POOL & WHIRLPOOL
- BREAKFAST BUFFET
- MEETING & BANQUET FACILITIES
- EXPRESS MARKET, 24-HOUR PANTRY
- **MARRIOTT BONVOY**

BEST WESTERN

1509 Hampton Dr., Exit 160
217.342.4499
www.bestwestern.com

- KING ROOMS WITH JACUZZIS
- FREE LODGING KIDS 18 & UNDER
- FREE HOT BREAKFAST
- FREE NEWSPAPER
- HIGH-SPEED INTERNET ACCESS
- ADJACENT TO MCALISTER'S DELI

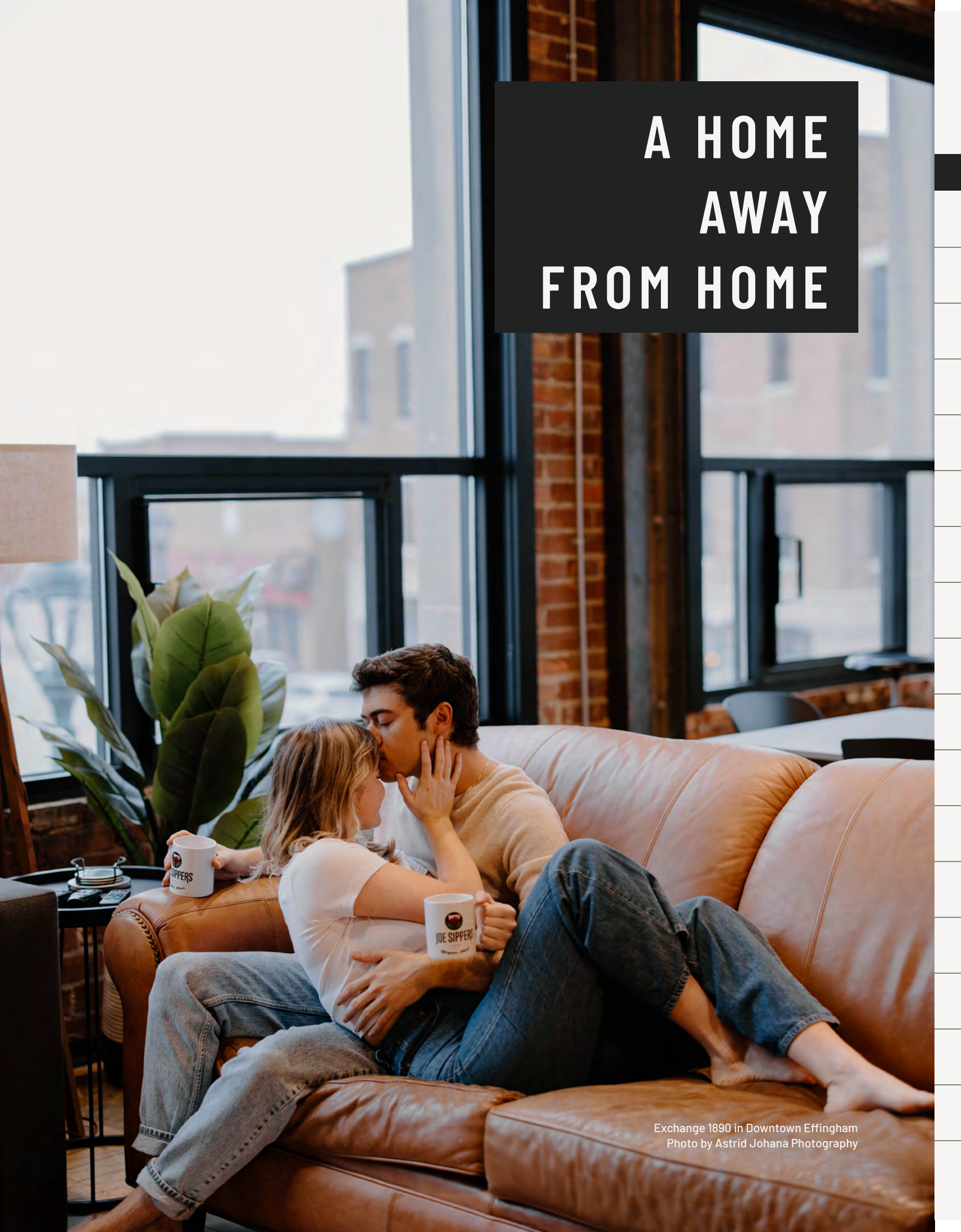


COMFORT SUITES

1310 W. Fayette Ave., Exit 159
217.342.3151 or 800.228.5150
www.choicehotels.com

- BEAUTIFUL SUITES
- INDOOR POOL & SAUNA
- MICROFRIDGES
- HIGH-SPEED INTERNET ACCESS
- FREE HOT BREAKFAST

A HOME AWAY FROM HOME



Exchange 1890 in Downtown Effingham
Photo by Astrid Johana Photography

		CONTINENTAL BREAKFAST	SUITES	WIFI	FRIDGE + MICROWAVE	MEETING SPACE	POOL	FITNESS CENTER	RESTAURANT ATTACHED	PET- FRIENDLY	FREE PARKING
EFFINGHAM											
ABE LINCOLN MOTEL 1108 W. Edgar Ave., Exit 159	217.342.4717			•	•						•
BAYMONT INN BY WYNDHAM 1811 W. Fayette Ave., Exit 159	217.294.6051 www.wyndhamhotels.com	•		•			•	•	•	•	•
BEST WESTERN 1509 Hampton Dr., Exit 160	217.342.4499 www.bestwestern.com	•	•	•	•		•	•		•	•
CAMP LAKEWOOD (site specific) 1217 W. Rickelman Ave., Exit 160	217.342.6233 camlakewoodcampground.com			•	•					•	•
COMFORT SUITES 1310 W. Fayette Ave., Exit 159	217.342.3151 www.choicehotels.com	•	•	•	•	•	•	•		•	•
COUNTRY INN & SUITES 1200 N. Raney St., Exit 160	217.540.5555 radissonhotelsamericas.com	•	•	•	•	•	•	•			•
DAYS INN 1602 Damron Ct., Exit 160	217.662.7077 www.wyndhamhotels.com	•	•	•	•			•		•	•
EFFINGHAM MOTEL 702 E. Fayette Ave., Exit 159	217.342.3991				•						•
XCHNG 1890 214 W. Jefferson Ave., Exit 159	217.663.8409 www.airbnb.com		•	•	•	•				•	•
FAIRFIELD INN & SUITES 1111 N. Henrietta St., Exit 160	217.540.5454 www.marriott.com/mtoef	•	•	•	•	•	•	•		•	•
HAMPTON INN & SUITES 1305 N. Keller Dr., Exit 160	217.540.5050 effinghamsuites.hamptoninn.com	•	•	•	•	•	•	•		•	•
HOLIDAY INN 1301 Ave. of Mid America., Exit 160	217.540.7777 www.ihg.com/holidayinn		•	•	•	•	•	•	•		•
HOLIDAY INN EXPRESS & SUITES 1604 W. Fayette Ave., Exit 159	217.994.9949 hiexpress.com/effinghamil	•	•	•	•	•	•	•			•
LA QUINTA INN & SUITES 1103 Ave. of Mid America, Exit 160	217.540.1111 www.lq.com	•	•	•	•		•	•		•	•
MOTEL 6 1412 W. Fayette Ave., Exit 159	217.342.9271 www.motel6.com		•	•	•					•	•
QUALITY INN 1304 W. Evergreen Ave., Exit 160	217.347.5050 www.choicehotels.com	•	•	•	•		•	•		•	•
RAMADA BY WYNDHAM 1606 W. Fayette Ave., Exit 159	217.595.6056 wyndhamhotels.com/hotels/00265	•	•	•	•	•	•	•			•
SUPER 8 1400 Thelma Keller Ave., Exit 160	217.393.6962 www.super8.com	•	•	•	•	•	•			•	•

VISITOR FAQs



America's Groove Record Store
Photo by Astrid Johana Photography

FREQUENTLY ASKED QUESTIONS

WHERE CAN I FIND VISITOR INFORMATION?

Local, regional and state travel information can be found at the Visit Effingham Office, located at 201 E. Jefferson Ave. in Effingham, IL. You can also call us at 217.342.5310 or visit www.visiteffinghamil.com to learn more about our town!

IS THERE AN AMTRAK STATION IN EFFINGHAM?

Yes, you can find more information about Amtrak, as well as view their scheduled stops, at www.amtrak.com. The station is located at 401 West National Avenue in Effingham, IL.

WHERE IS THE CLOSEST INTERNATIONAL AIRPORT?

The closest international airport to Effingham, IL is the St. Louis Lambert International Airport, located at 10701 Lambert International Blvd, St. Louis, MO 63145. You can also view flights online at www.flystl.com.

DRIVING DISTANCE TO/FROM EFFINGHAM

CHICAGO, IL: 3 HOURS

ST. LOUIS, MO: 1.5 HOURS

INDIANAPOLIS, IN: 2 HOURS

NASHVILLE, TN: 4.5 HOURS



Exceptional Private Events . Amazing Cuisine . Craft Cocktails . Good Vibes

1810 Avenue of Mid-America • Effingham, IL 62401 • 217.343.2022

Follow us    • Visit our website www.ffgrill.com

VISIT
Effingham
IL • USA
A MIDWESTERN
GETAWAY

201 E. JEFFERSON AVE
EFFINGHAM, IL 62401

Presort Standard
US Postage
PAID
Effingham, IL 62401
Permit No. 541



www.visiteffinghamil.com

enjoy
illinois