

# Epic Art ADVENTURES

Bristol Elkhart Goshen Middlebury Millersburg Nappanee Wakarusa



## CELEBRATING 15 YEARS OF QUILT GARDENS WITH EPIC ART!

World-renowned sculptor Seward Johnson's stunningly realistic life-size bronze sculptures are back in Elkhart County at Quilt Garden locations. *But that's not all.* Talented local artists are joining the celebration, with their creative and playful takes on public art around every corner on the Heritage Trail.

Make good times and great memories strolling through lively downtowns filled with sculptures, art, culture, entertainment, and eclectic shops. Use this guide to check them off your list (*the flower icon 🌸 indicates a Quilt Garden location*).

Post your pics and selfies using [#EpicArtAdventures](#) and [#QuiltGardens](#) on Facebook and Instagram

[EPICARTADVENTURES.COM](http://EPICARTADVENTURES.COM)

## BRISTOL



### *Attic Trophy* © 1992

Elkhart County Historical Museum  
304 West Vistula Street

☐ saw it, loved it



### *Crossing Paths* © 1988

Memorial Park  
81 East Vistula Street

☐ saw it, loved it

## ELKHART



### *Can Do!* © 2015

Elkhart County Visitor Center  
3421 Cassopolis Street

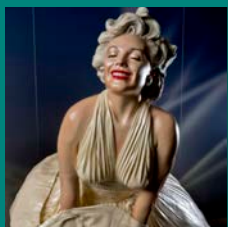
☐ saw it, loved it



### *Contact* © 1987

Hopman Jewelers  
100 North Main Street

☐ saw it, loved it



### *Forever Marilyn* © 1996

Linton's Enchanted Gardens  
315 CR 17

☐ saw it, loved it



### *Hell, Time to Go Fishing* © 1991

Elkhart Environmental Center  
1717 East Lusher Avenue

☐ saw it, loved it



### *Lunchbreak* © 1978

Central Park  
300 South Main Street

☐ saw it, loved it



## ELKHART *(cont.)*



### *Monet, Our Visiting Artist* © 2003

Wellfield Botanic Gardens  
1011 North Main Street

☐ saw it, loved it



### *Nice To See You* © 1992

The Vine  
214 South Main Street

☐ saw it, loved it



### *No Way!* © 2013

The Lerner  
410 South Main Street

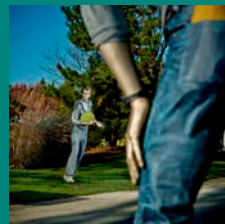
☐ saw it, loved it



### *Ready to Make a Break* © 1993

Ruthmere  
302 East Beardsley Avenue

☐ saw it, loved it



### *Time Out* © 1981

Southgate  
27751 CR 26

☐ saw it, loved it



## GOSHEN



### *Hats Off* © 2022

Elkhart County 4-H Fairgrounds  
17746 CR 34

☐ saw it, loved it



### *Keep Life in Balance* © 2019

Abshire Park  
1302 East Lincoln Avenue

☐ saw it, loved it





## GOSHEN (cont.)



### *Los Mariachis* © 1994

Elkhart County Courthouse  
101 North Main Street

☐ saw it, loved it



### *No Mommy, That One* © 1992

Old Bag Factory  
1100 North Chicago Avenue

☐ saw it, loved it



## MIDDLEBURY



### *A Day Off* © 1989

Riverbend Park  
511 East Warren Street

☐ saw it, loved it



### *Gotcha!* © 1993

Krider Garden  
302 West Bristol Street

☐ saw it, loved it



### *Out of Sight* © 1991

Das Dutchman Essenhaus  
240 US 20

☐ saw it, loved it



## MILLERSBURG



### *Life at a Proper Distance* © 1991

Millersburg Town Hall  
201 West Washington Street

☐ saw it, loved it

## NAPPANEE



### *Building Better Neighbors* © 1993

Nappanee Center  
302 West Market Street

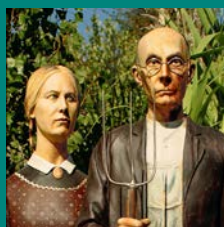
☐ saw it, loved it



### *Dining Out* © 1987

RUHE152  
152 West Market Street

☐ saw it, loved it



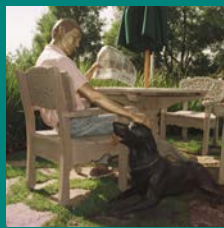
### *God Bless America* © 2005

The FarmHouse Inn B&B  
1061 Parkwood Drive

☐ saw it, loved it



## WAKARUSA



### *Keeping in Touch* © 1995

Downtown Wakarusa  
116 South Elkhart Street

☐ saw it, loved it



## VISIT, CHECK IN, AND ENTER TO WIN!

Use the Epic Art Passport to explore world-renowned sculptor Seward Johnson's stunningly realistic life-size bronze sculptures along with sculptures and murals created by local artists in the communities of Bristol, Elkhart, Goshen, Middlebury, Millersburg, Nappanee, and Wakarusa in Elkhart County.

Check in and be entered to win a *Well Crafted Food Lovers Delight* grand prize!

**SCAN THE QR CODE  
WITH YOUR SMARTPHONE  
TO GET STARTED!**



All sculptures by Seward Johnson. Photos provided by The Seward Johnson Atelier, Inc. Photos taken by Ken Ek, David W. Steele and The Seward Johnson Atelier, Inc. Seward Johnson images on cover (left to right): Out of Sight © 1991; Can Do! © 2015; No Mommy, That One © 1992. Learn more at [www.SewardJohnsonAtelier.org](http://www.SewardJohnsonAtelier.org).

# EXPERIENCE LOCAL & REGIONAL ARTISTS

Elkhart County's vibrant arts scene is as diverse as the landscapes. From peaceful riverside parks to energetic urban surroundings, public art brings a sense of peace. From playful to thought-provoking, sculptures and murals created by makers who call Elkhart County home can be found everywhere you look.

*Get to know the local & regional artists who are highlighted in the 2022 Epic Art Adventures.*



## ***John Mishler, Curator***

Summer Carousel - *Elkhart County Visitor Center, Elkhart*  
Arrow Keeper - *Main Street, Goshen*  
Cherry Blossoms - *Leadership Park, Nappanee*



## ***Joel Lara***

Que' Soy? XI - *Juxtapose, Elkhart*  
Tu reflejo - *Edward Jones, Goshen*  
la Historia del Manana - *Op1Vet, Goshen*



## ***Orion Blaha***

Crystal Ribbons - *River Walk Commons-East Bank, Elkhart*  
Conduit to Jupiter - *Goshen College, Goshen*



## ***Steve Lerma***

Pipe Dreams - *North Third Street, Goshen*



## ***Steve Depositari***

Eagle - *Premier Arts, Elkhart*  
Horse's Head - *Neighbor's Mercantile, Nappanee*



## ***Sunday Mahaja***

Watcher of the Plains - *Elkhart Public Library, Elkhart*  
Rain Dance - *Irwin Arts Center, Goshen*  
Gathering Place - *Krider Gardens, Middlebury* 🌸



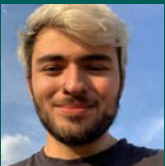
## ***Heather Gabel***

Expanding Star - *Council on Aging, Elkhart*



## ***Andrew Ness***

New Growth - *Teaberry Wood Products, Middlebury*



## ***Brandon Jimenez***

Ofrenda - *Marino Law Firm, Goshen*



## ***Nathan Pauls***

Continue to Reach - *United States Post Service, Elkhart*



## ***Olivia Krall***

Brightly Colored Bird - *Congdon Park, Bristol*  
Spiraling - *Goshen Historical Museum, Goshen*



## ***Angie Thieszen***

Millersburg Hopper - *Downtown Millersburg*



## ***Haley Kirkton***

Monstera - *Town Green at Martin's Supermarket, Elkhart*



## ***Benji Wall***

Doc the Robot - *The Imagination Spot, Goshen*  
Squirrel - *Memorial Park, Wakarusa*



## ***Tuck Langland***

Matriarch - *Midwest Museum of American Art, Elkhart*  
Dance of Awakening Day - *IU South Bend, Elkhart Center, Elkhart*



## ***Emma Zuercher***

Shadows on the Ceiling - *Secret Door Games, Elkhart*



*Epic Art Adventures is brought to you by the Elkhart County, IN CVB  
with support from the Community Foundation of Elkhart County.*