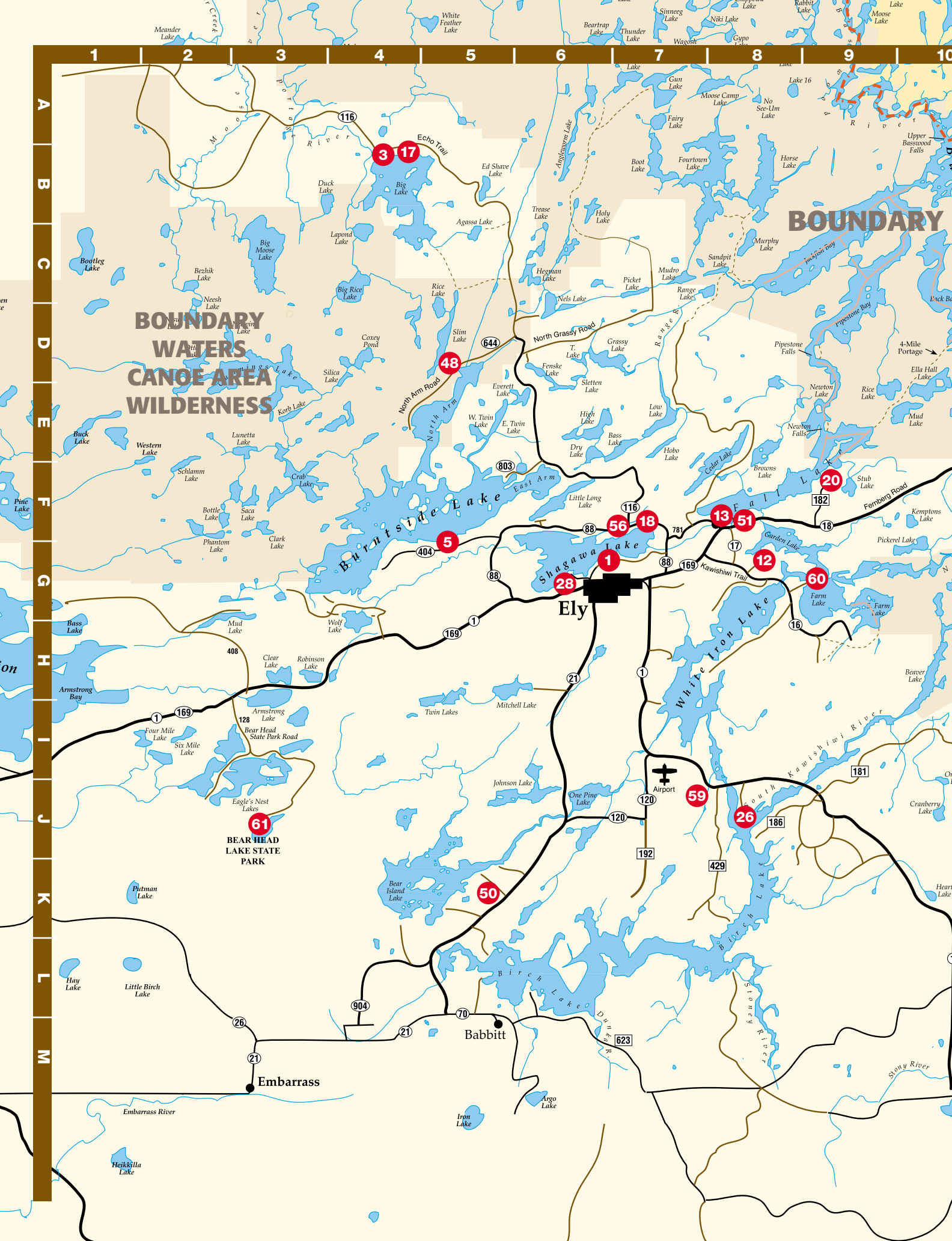
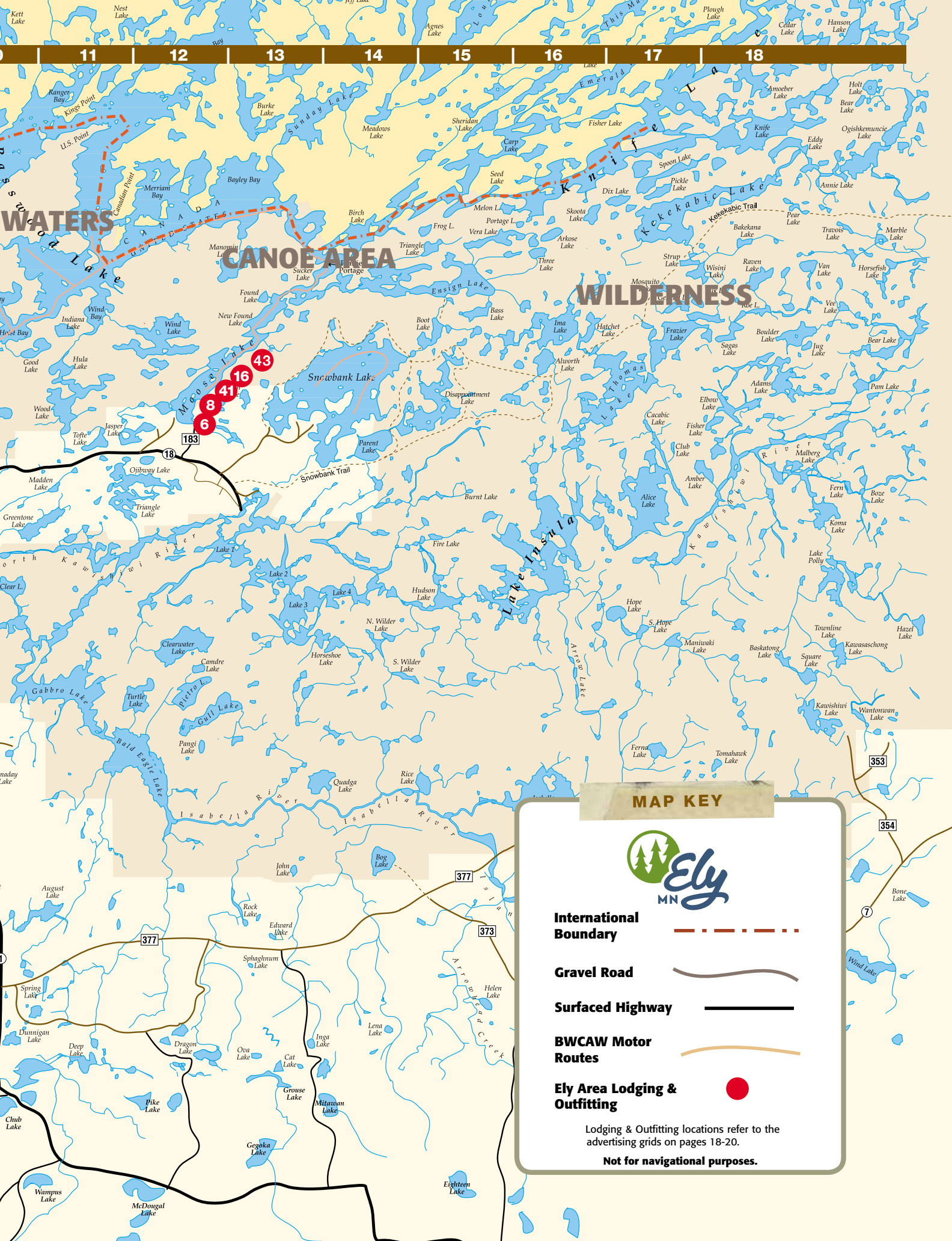




ELY CHAMBER OF COMMERCE
BUSINESS & VISITOR GUIDE 2026







MAP KEY



International Boundary



Gravel Road



Surfaced Highway



BWCAW Motor Routes



Ely Area Lodging & Outfitting



Lodging & Outfitting locations refer to the advertising grids on pages 18-20.

Not for navigational purposes.

Shagawa Lake

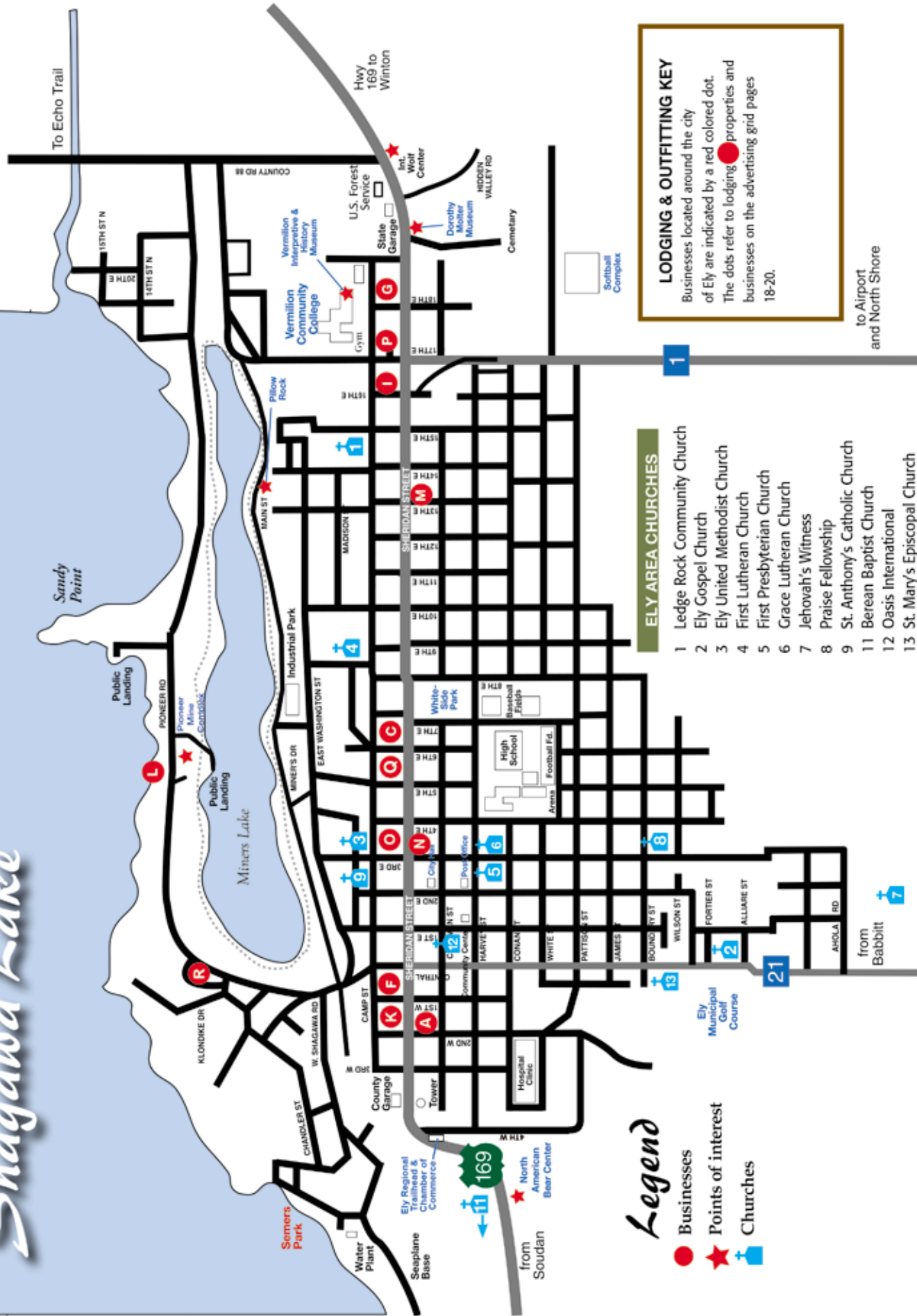


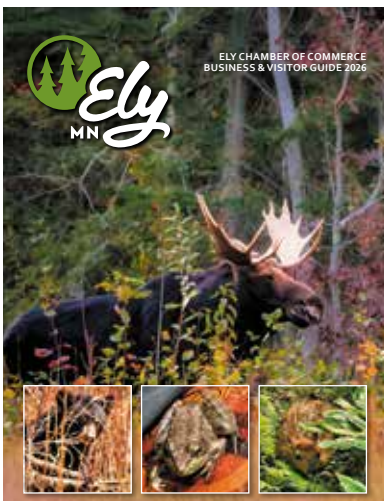


Table of Contents

Nestled in the northeastern corner of Minnesota, Ely lies within the Superior National Forest and on the edge of the Boundary Waters Canoe Area Wilderness. Our area overflows with recreational opportunities. Open water season brings canoeing, boating, fishing, hiking, ATV travel and exploration galore. The onset of winter creates a wonderland filled with sled dog adventures, cross country skiing, snowshoeing, kicksledding and snowmobiling. Of course, ice fishing is popular too. No matter the experience, we have businesses that can provide the products and services needed to make any visit memorable.

Seeking to relocate? Ely is a prime community with amenities and services making it the hub for surrounding communities. Ely. Live. Work. Play.

On the cover



*Front Cover – Primary image:
Majestic Fall (Michelle Wild)*

*Front Cover – Left inset image:
Curious (Michelle Wild)*

*Front Cover – Center inset image:
Stowaway (Jayne Bohner)*

*Front Cover – Right inset image:
Waiting for Mom (Diane Kromer)*

Area Map	Inside front cover
City of Ely Map	2
Shop.Dine.Stay	4
Celebrate	5
Events	6
Event Calendar	7
Attractions	8
Uniquely Ely	9
Trails to Adventure	10-11
Spring	12
Summer	13
Fall	14
Winter	15
Arts & More	16-17
Rough It or Relax	18-20
Guide Service	21
Grant McMahan	22-23
Fernberg Trail	24-26
To the South.....	27
To the West	28
Ely.....	29-31
Kawishiwi Trail.....	32-33
Echo Trail.....	34-35
Dining & More	37
Retail Businesses	38-39
Services.....	41-42
Live.Work.Play	44
Health Services.....	45
Let's Talk Numbers	45
ATV Map	46-47
Snowmobile Map	48-49

Shop

Varnished moose turd earrings, blood sausage, a new refrigerator? Whether you're looking for a gag gift, ethnic food specialties, a new appliance, or just want to browse while the rest of the family goes fishing, Ely has a store for you. Hardware, bait & tackle, clothing, giftware - our retail stores carry a variety of products, including those made right here in Ely.



Photo by Kendra Kauppi

Dine

Scrumptious offerings galore populate Ely restaurant menus. Whether you want a burger so big you'll take home a second meal or a vegan, gluten-free, watching-your-waistline (but still delicious) dinner, you can find it here. Variety in ambiance awaits as well – overlooking a lake or a downtown sidewalk, a quiet corner for conversation or in the midst of raucous karaoke, white tablecloths or rustic log tables. Satisfy all your appetites!



Photo by Diane Kromer

Stay

And stay a little longer. Ely has so much to offer, why rush away? With co-working spaces and high speed internet, you can keep up with any urgent work and still have time to enjoy the shops, attractions, and natural settings. So treat yourself to an extra day or two.



Photo by Daniel Raza

Celebrate



Photo by Bria Schurke



Photo by Catherine Raza

The big event was a huge success! Everyone raved about the food, the music, the location, and most of all seeing one another again. It's nearly over as you sit on the dock, relieved to have a few quiet moments and dip your aching feet in the cool lake. A pair of loons swim by, looking formal in black and white. A few stars are emerging from the dark rose and purple sunset. Perfection. Ely was so right for this, with professionals to help with planning, catering and accommodations that impressed the fussiest guests, and friendly folks eager to make everyone feel welcome. For your next big event—you'll be ready to take charge again, and Ely will be the place. But maybe different shoes...



Photo by Anja Breiehagen



Photo by Donna Meier

Events

What type of experience are you searching for... premier art festival, winter fun, holiday activities, antique cars, sled dog race? Elyites enjoy sharing their heritage and culture and invite you to participate. These are just a few of our events. We invite you to check out our event calendar and full list of featured events at www.ely.org.

Blueberry/Art Festival



Art Kaufenberg

Welcome to Ely's Signature Summer event! Held during the last full weekend in July, the Blueberry/Art Festival is the premiere festival of the region and draws huge crowds each year. There are more than 280 quality vendors selling original art and handcrafted jewelry, pottery, woodwork, photography and much, much more. Over 20 food vendors sell mouth-watering temptations such as seafood, pulled pork sandwiches, burgers, brats, and plenty of refreshing beverages and treats. Follow us on Facebook @BlueberryArtFestival.

Harvest Moon Festival



Emily Majerle

Autumn in Ely—a season to experience blue skies, crisp clean air, and Mother Nature's brilliant display as the leaves take on melting hues of green, yellow, orange and red. Autumn in Ely also brings the Harvest Moon Festival, which features over 125 artists and craftsman selling their original art and handcrafted pieces. This is a family-oriented event with things for the kids to do as well. Follow us on Facebook @ElyHarvestMoonFestival.

Ely Marathon



Billed as "the 8390 rod portage" run—a veiled reference to the lengths of portages in the Boundary Waters Canoe Area Wilderness—the Ely Marathon is held the fourth weekend in September. The scenic course gives runners a true wilderness experience as parts of the race are on roads adjoining the BWCAW. ElyMarathon.com Follow us on Facebook @ElyMarathonMN.

Wolftrack Classic Sled Dog Race



Ellen Cashman

Held in late-February, this popular event puts man and dog against nature has more than 60 mushers and 500 sled dogs compete in one of two races traveling through northern Minnesota's state trail system. Visitors have the opportunity to watch from the starting line to see how eager the dogs are to get on the trail. There are several great vantage points along the race route that are easily accessible to the public to watch the mushers as they pass through. Follow us @WolfTrackClassic.

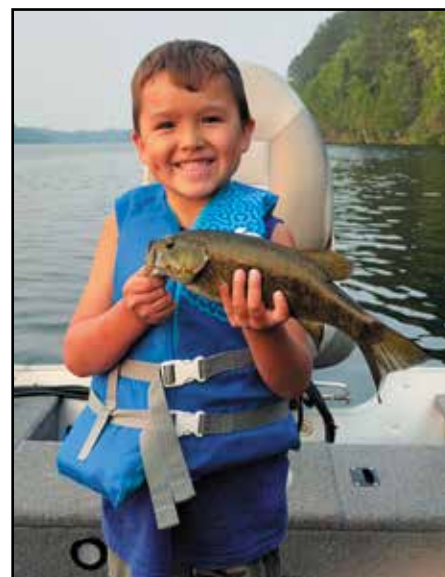
Ely Winter Festival and Art Walk



T. Schocke

In early February, Ely's Whiteside Park becomes a winter wonderland as local and international snow carvers turn 8' x 12' blocks of snow into works of art. The downtown area becomes an outdoor gallery as hundreds of works of art are displayed in merchant windows. Many other events are scheduled during this ten day winter party. Nobody does winter better! ElyWinterFestival.com

Peter Mitchell Fun Days



Daniel Raza

Celebrate Babbitt's heritage in this family-friendly nine-day event featuring live music, kids activities, food, and more. The event kicks off on the second Saturday of June with their Walleye Whamma Fishing Contest. For a full list of events, visit Peter Mitchell Fun Days on Facebook.

Citywide Rummage, Business Crazy Day and Used Equipment & Watercraft Sale



The whole town is involved in this area wide event. Local residents host over twenty rummage sales, participating retail businesses roll back pricing on a sundry of items and canoe outfitters & resorts have a wide range of equipment and watercraft for sale. Always the third weekend in May. Map and participating list available one week prior. Ely.org/CityWide

Ely Fun Run



Sue Edgington

Join snowmobiling enthusiasts as they travel between northwoods communities via car or snow machine. Lots of prizes and drawings. Funds go towards trail grooming in the Ely, Babbitt and Tower areas. First full weekend in February, so mark your calendars.



Ely Film Festival



Abby Sirek

The Ely Film Festival recognizes local to national filmmakers showcasing a broad range of themes representing adventure, community, and more. Visit elyfilmfest.com

E V E N T C A L E N D A R 2 0 2 6

FEBRUARY

5-15

Ely Winter Festival and Ely Art Walk

7

Ely Snowmobile Fun Run

20-22

WolfTrack Classic Sled Dog Weekend

MARCH

11-15

Ely Film Festival

19-22

Ely Dark Sky Festival

MAY

16

Citywide Rummage, Business Crazy Day, & Used Equipment & Watercraft Sale

25

Memorial Day Remembrance

JUNE

13

Walleye Whamma

13-21

Peter Mitchell Fun Days

JULY

4

Fourth of July Celebration, Four on the 4th

16-19

Ely Watercolor Show

23-26

Operation Blueberry

24-26

Blueberry Art Festival

AUGUST

8-9

Ely Snowmobile Watercross

SEPTEMBER

4-7

Fest du Nord

10-13

Harvest Days

11-13

Harvest Moon Festival

18

Northern Lights Clubhouse 5K Glow Run/Walk

19

Ely Marathon, Half Marathon & Canoe Portage

NOVEMBER

28

Shop Local Saturday

DECEMBER

4-6

Mrs. Claus Holiday Hop, Shine Bright Ely & more

5

Mrs. Claus Party

14

Gift Getter Gauntlet – Procrastinator's Only

Ely is always hosting additional events, and planning new ones too. Visit Ely.org/Events to view a full listing of everything happening in our area.

Attractions

Few locations offer the number of attractions, not just in a twenty-mile within a five-mile radius. Enjoy a tour featuring the legendary Dorothy Molter, Ely's beloved Rootbeer Lady. Watch live wolves interact at the International Wolf Center. Of course, the trip would not be complete without viewing black bears at the North American Bear Center. Learn more about area history and culture at the Ely-Winton History museum, Canoe Museum and Pioneer Mine.

International Wolf Center



International Wolf Center

Learn about wolves through interactive exhibits, observe the ambassador wolves, or attend a weekly feeding or howling expedition. The Center offers various daily programs, movies, and other adventures, ensuring there's something for everyone.

Ely-Winton History Museum



Located at 1900 E. Camp Street on Ely's Vermilion Community College campus, this center shows the local history of logging and mining through artifacts, photographs and displays. Open Tuesday through Friday during winter and Tuesday through Saturday from June to August.

Dorothy Molter Museum

The Dorothy Molter Museum brings the story of Dorothy Molter, the last non-indigenous resident of the BWCAW to life through a variety of exhibits and videos in three of her historic log cabins. The famed Root Beer Lady of Knife Lake lived most of her 79 years on the border of the U.S. and Canada at the Isle of Pines, and each year as many as 6,000 visitors from all over the world would stop by. Dorothy was known by most for her homemade root beer but was also well known for her wilderness nursing skills, helping thousands of canoers with medical needs. After her death, her cabins were dismantled and transported out of the BWCAW by dogsled and brought to Ely. A visit includes access inside the



Dorothy Molter Museum

three cabin exhibits including two videos, a .25mi nature trail, a birding garden and guided programs.

Ely Arts & Heritage Center



Ashley Mowery

Located at historic Pioneer Mine on Ely's North Side, the complex has two restored buildings. The Shaft House is open Memorial Day through Labor Day on Tuesdays and Fridays from 1-4 p.m. and by appointment (218-365-3578). Photos and artifacts from the underground mine, which closed in 1967, are displayed. The Miners Dry House features events, art shows, and classes throughout the year. The nearby Trezona Trail has commemorative signs with historical information placed at each of the iron ore mine's locations.

North American Bear Center



Ashley Mowery

Come meet our bears! Our Ambassador bears live in a 2.5-acre natural enclosure including a man-made pond and waterfalls. Learn about bear behavior, camping with bears, and the secret world of black bears. Exhibits from over 50 years of research replace misconceptions about these feared and adored animals. Explore our hands-on children's Cub Room, walk our 1.2-mile interpretative nature trail to learn about local vegetation, rocks, birds, ecology and wildlife sign. Our Northwoods Ecology Hall features many of the animals that coexist

with bears in the region. Be sure to take a Behind-the-Scenes tour and see our bears up close.

Ely's Historic State Theater

238 E Sheridan St Ely info@elystatetheater.org elystatetheater.org With its grand reopening this year, Ely's Historic State Theater is a cultural hub of film, art, entertainment and learning that cultivates a vibrant, healthy community.

Ely Folk School

From ethnic cooking classes to basket weaving, jewelry making, furniture building, photography, fabric arts, writing, painting and other arts, stained glass making, gardening, sustainable living, herbs and health, foraging, canoeing and canoe building, dances and music, there are classes for most every interest at Ely Folk School, conveniently located at the top of the hill in downtown Ely, Minnesota.



Eric Simula

Sigurd Olson's Listening Point

In 1956, Sigurd Olson created Listening Point - a rugged northern Minnesota property on Burntside Lake as a private retreat. This Listening Point Foundation owns and cares for the property, which is on the National Register of Historic Places, and is dedicated to furthering Sig's wilderness philosophy. In this spirit the foundation conducts guided tours for the interested public and student/event groups, hosts writing workshops and artists-in-residence, and sponsors wilderness education programs. Visits can be arranged through the foundation's website.



Underground Mine State Park

This state park features the state's deepest underground iron ore mine. The 1-1/2 hour guided tour takes visitors nearly 1/2 mile underground to the lowest level mined. Located off Hwy. 169 in Soudan. State park vehicle permits are not required; however, there is a fee for the tour. Tours: Memorial weekend-September and weekends in October.



Uniquely Ely

A noraks, mukluks, tarps, canoe packs, sled dog harnesses—wilderness adventure clothes and equipment are the kind of thing you'd expect to be made in Ely by entrepreneurial types with an enthusiasm for the outdoors. But there is so much more to Ely's entrepreneurial offerings: hand-tooled customized gun cases; granola with poo-related puns on the packaging; eye-catching waterproof tote bags that might last a lifetime; ethnic foods like old-fashioned sauerkraut, sausages, and potica; knife-sharpening systems made for professional chefs and butchers; pottery and ceramic art; and much more. With enthusiastic customers throughout the U.S. and even abroad, Ely-made products are shipped far and wide and also create a unique shopping experience right in downtown Ely.

Wintergreen Northern Wear

Owner:

Jackson & Gabriel Harren



Steger Mukluks

Owner:

Patti Steger



Photo by Lucy Hawthorne

Brainstorm Bakery

Owners:

Brian & Andrea Strom



ATV



Hike



Bike



Trails to Adventure

No matter your mode of travel, we have trails to engage, delight and enrich your northwoods experience. Here is a sampling of area trails. Trail maps in PDF format are available at www.ely.org or at the Ely Chamber of Commerce & Visitor Center.

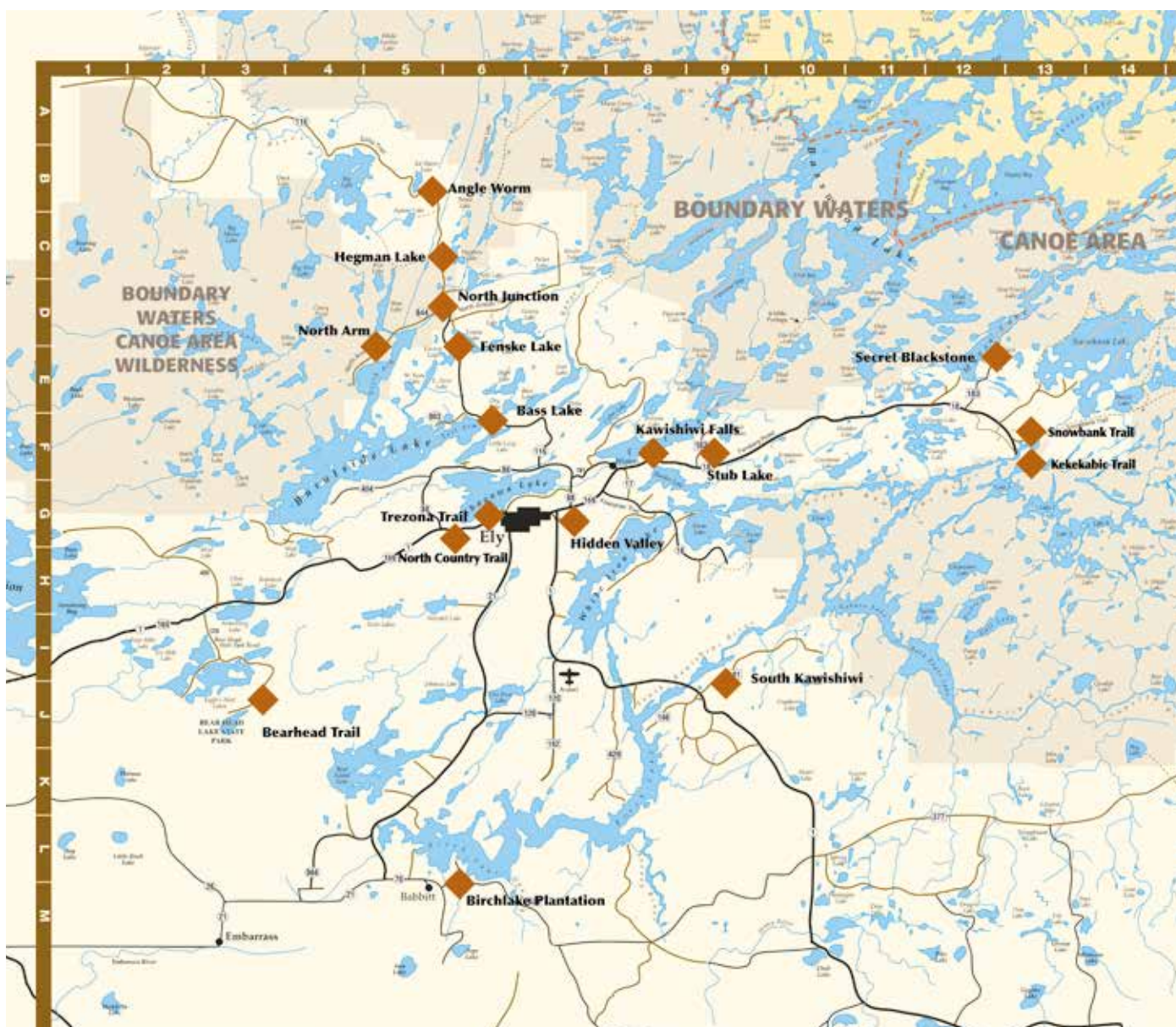


ATV routes are on page 47 of guide.

Trailhead Points



Snowmobile routes are on inside back cover of guide.



Ski



Snowshoe



Aaron Huber

Snowmobile



Drive



Trail Name	Distance from Ely	Trail Length	Activities
Angleworm +	17	14*	  
Bass Lake	6	6*	 
Bear Head State Park #		Varied	 
Birch Lake Plantation/Birch Trail 3			 
Echo Trail		45 miles to next highway	  
Fenske Lake	11	1	
Fernberg Trail		22	  
Fire & Ice - Meander Lake Trail		1/8	
Flathorn - Gegoka		16*	 
Grant-McMahon (Cty Rd 88)		12	  
Hidden Valley Trail	1/2	Varied	  
Kawishiwi Falls Trail		1	
Kekekabic Trail	21	39	
North Arm	14	32*	 
North Country Trail	0	48,000	
North Junction	7	17*	 
S. Kawishiwi River +	10	1	
Secret-Blackstone	20	5*	
Snowbank Trail	21	28.1	
Trezona Trail	1/2	4	   

NOTE: All distances are in miles. If multiple loop options are available, an asterisk*will be shown by the trail miles.

A state park sticker or day pass is required to access trails within Bear Head Lake State Park.

+ Some trails travel into or through the Boundary Waters Canoe Area Wilderness and may require a day use or overnight travel permit.

Spring

Spring is an often-overlooked

opportunity for an Ely vacation. In March and April, while some people are thinking about golf and gardens, we are spending long, warm, sunny days (relative to the dwindling winter) dogsledding in T-shirts, mountain biking for miles on the crunchy lake surface, snowmobiling or skiing to south-facing shorelines for crappie fishing and picnics, and reading the stories in the winter's worth of wildlife tracks that are now embossed on the snow. Sometime between April and May, the ice turns to water, and we trade our snow toys for summer toys as we celebrate Minnesota Fishing Opener. This is the season to search for moose and deer antlers along the trails, watch for the swans to grace our waterways, listen for the first loon call, and relish the early-blooming wildflowers. Town is calm, business owners and restaurant servers have time to chat, and the wilderness is a little wilder.



Photo by Donna Meier



Photo by James Stone



Photo by Michelle Wild

Summer

Oh, the choices!

Each day and night is filled with endless options. Shall we pick berries on granite outcroppings or tiny islands? Fish for walleye or pan fish? Paddle into the wilderness or party on a houseboat? Shop at the Farmers and Artists Market or the classy gift stores? Be thrilled by one of the premier theater shows or spend the evening watching the sunset? Grill on the deck or enjoy a delicious meal at one of Ely's fine restaurants? Hike to a waterfall or see wolves and bears close up at the wildlife centers? Visitors plan their time in Ely for big event weekends like the Blueberry/Art Festival, Watercross, and music festivals. Ely resorts offer options from rustic to luxurious, remote to in-town, historic to modern, but they all provide lakeside fun and friendly hosts who help guests get the most from their vacation.

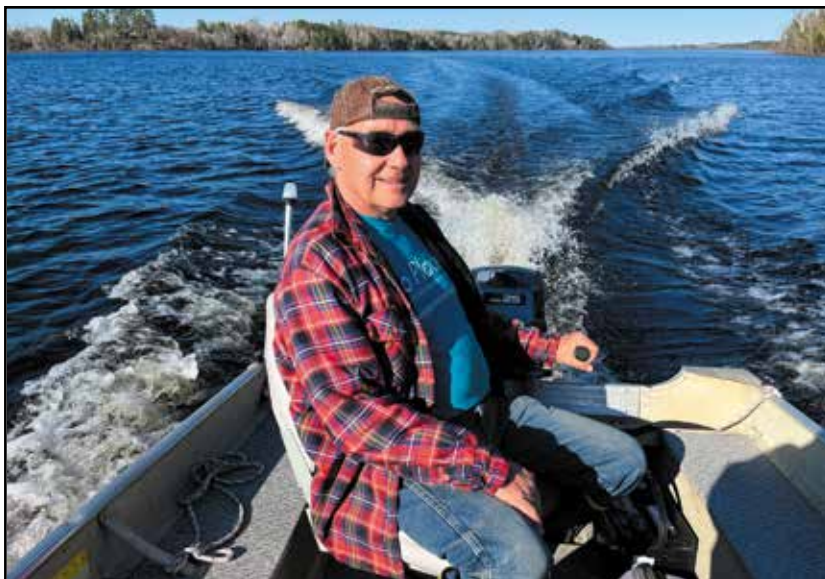


Photo by Donna Meier



Photo by Jayne Bohner



Photo by Daniel Raza



Photo by Donna Meier

Fall

Crisp and colorful,

fall is the favorite season for many Elyites. The trails and roadsides are glorious with golden aspens and scarlet maples, free for the pleasure of hikers, bikers, ATVers, or those touring the back roads by car. We stock our larders with catches from some of the year's best fishing; grouse, ducks, and venison from successful hunts; and wild rice harvested from local lakes. Athletes love our marathon, shoppers love our Harvest Moon Days, and everyone finds something to love at the Harvest Moon Festival. As the first snowflakes fly, restaurants bring out the comfort food menus and hot drink specials. Thanksgiving features after-dinner festivities in the stores followed by a weekend of holiday bazaars, a parade unlike any other (think sled dogs, Christmas lights on canoes, and a dance line with mukluks and muffs), and even a visit by that jolly bearded toymaker from the North Pole.

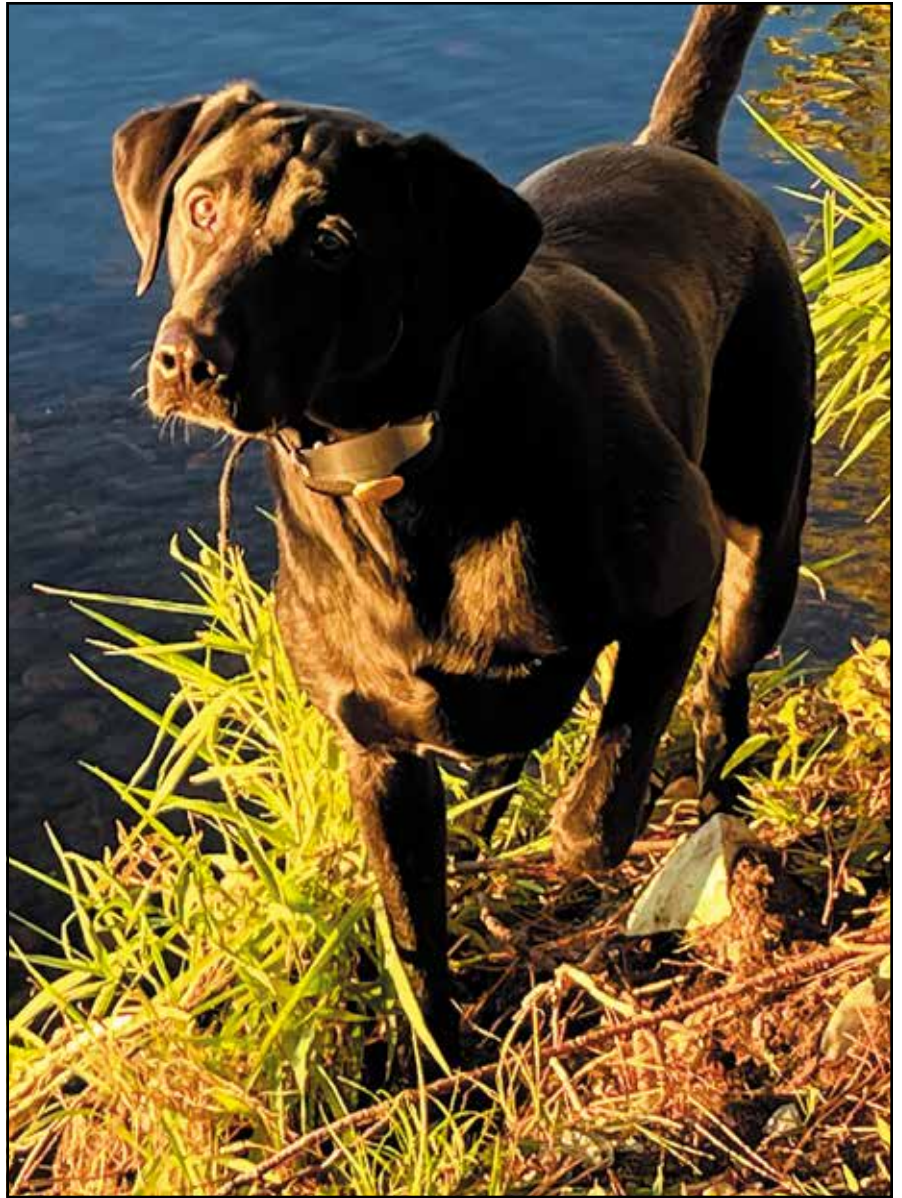


Photo by Donna Meier



Photo by Thomas Johnson



Photo by Donna Meier

Winter

Winter is about contrast.

We curl up next to a cozy fireplace or adventure into a frosty forest. Ely has dark night skies for awe-inspiring moments with stars and northern lights; then brilliant sparkling snowy lakes and landscapes for daytime explorations. We zoom many miles by snowmobile or move quietly on skis or snowshoes through fresh snowfalls. A steaming hot sauna prepares us for the plunge into an ice-cold lake, or the tamer choice of simply chilling in the winter air. Winter outdoor professionals show the uninitiated how to be warm in sub-zero weather and impress their warm weather friends. Howling huskies converse with wild wolf packs while winter campers snuggle into warm sleeping bags. Other sled dogs prove their athletic prowess as they race to victory in the WolfTrack Classic Sled Dog Race. During the Ely Winter Festival, artists carve snow into super-sized statues in the park and display their work in the store windows. No mosquitoes for months!



Photo by Michelle Wild



Photo by Michelle Wild



Photo by Abby Sirek



Photo by George Spanholz

Arts &

By Joe Baltich



Do you know of a town with a population under 3,500 that has more than five art galleries, offers dozens of classes every week in a variety of arts disciplines, has a dance company and a dance studio, produces at least five major theater performances annually including one full scale musical and one opera worthy of The Met, has a community chorus and city band, attracts nationally known performance groups to a retreat center where they create new material and try it out on local audiences, has a chapter of the state League of Poets that offers monthly readings, displays the work of dozens of local artists in a city-wide exhibit every year, brings internationally famous sculptors to compete with one another carving snow statues in sub-zero weather, has its own grant-making trust that supports local arts with thousands of dollars each year, was home to one of America's foremost nature writers and honors his legacy by an artist-in-residence program and maintaining his writing spaces, and supports a

By Les Conrad



More

folk school that features local culture and history in its offerings. Any one of these items would be outstanding in a small town, but Ely has them all and more! We are home to countless artists in many disciplines who are an important component of the town's economic health and also provide rich experiences for residents and visitors. Ticket prices and class fees are astonishingly far below city prices, and many arts activities are free.

By Heather Magee



By Pamela J. Davis



Rough It or Relax

Your Ely experience can be a rugged adventure, a sophisticated luxury, or anything in between. Do you want a 5-Star resort complete with gourmet meals, or a wilderness campsite where you catch and cook fresh fish for dinner? On an Ely vacation you can have it all! Plan a wilderness canoe trip through a local outfitter and add a resort night or two before or after. Simplify planning by choosing one of the many resorts that also offer outfitting. No place in the world offers a broader range of choices in accommodations.

Choose easy access to town and its unique shopping (Where else can you find two stores on the main street that started as designers for Arctic explorers?!) There are restaurants that offer fast food, hunger-satisfying big burgers, and sophisticated fusion menus. Visit our attractions and see both wolves and bears on the same day!

Perhaps you would rather get away from town on the many hiking, biking, ATV, and snowmobile trails, or take a day trip into the BWCAW. Even the most ardent mall-loving teens can enjoy an unplugged day (or at least several hours) in Ely.



Photo by Thomas Johnson



Photo by James Stone

Motels Location coordinates refer to maps on inside front cover.	Map Location Coordinates	See Ad Page	Location (Lake or Town)	Months Open	No. of Rooms	Handicap Accessible	Air Conditioning	Kitchenettes	TV/Cable	Sauna/Hot Tub	Food/Bar	Cont. Breakfast	Pets Allowed	Phones in Rooms	Meeting Room	Internet Access	■ = On Site BUSINESS LOCATIONS ARE INDICATED BY LETTERED DOTS OR NUMBERED DOTS ON THE MAPS ON THE INSIDE FRONT COVER.
GRAND ELY LODGE RESORT & EVENT CENTER 400 North Pioneer Road, Ely MN 55731 (218) 365-6565 www.grandelylodge.com	L&1	31	Ely	12	61	■	■	■	■	■	■	■	■	■	■	■	Pool, Whirlpool, Restaurant, Lounge & Banquet Area, Business Center - Internet, Fireside Lobby, FREE use of Canoes & Kayaks. BOAT & Ice house Rental *Nightly-Weekly* Rates. Open 365 days. 1 Mile from Downtown ELY. See ad page - 31.
NORTHWOODS INN & SUITES 1605 E. Sheridan Street, Ely, MN 55731 (218) 365-2873	I	30	Ely	12	30	■	■	■	■	■	■	■	■	■	■	■	Clean, comfortable rooms, plug-ins, access to trail, parking for trucks & trailers, cable TV, HBO, movie channels, coffee & tea 24 hrs, seasonal continental breakfast, wireless Internet access. Hair dryers, microwaves and refrigerators in all rooms. See ad page - 30.
PADDLE INN MOTEL 1314 E. Sheridan St.; Ely, MN 55731 (218) 365-6036 www.paddleinnmotel.com 1-888-270-2245	M		Ely	12	15	■	■	■	■	■	■	■	■	■	■	■	Clean, quiet, comfortable rooms. Wireless Internet. Pets okay (small fee), trailer parking, A/C, freezer space, fridge, microwave, in-room coffee, FREE sauna, outside plug-ins. All non-smoking. Reservations available online. All one level.
RIVER POINT VILLAS & CHALETs ON THE LAKE 12007 River Point Rd (218) 365-6604 https://riverpointresort.com/villas-ely-resort-lodge/ "Naturally Superior"™	26 J-8		Birch Lake S. Kawishiwi River	May to Oct.	4	■	■	■	■	■	■	■	■	■	■	■	High comfort, lakefront, spacious Villas and custom designed Chalets w/full kitchen, living room, fireplace, A/C, and sundeck w/grill on a spectacular private peninsula 15 min. SE of Ely. Rent by night or week. Fish, hike, kayak, or take a BWCA day canoe trip.
SHAGAWA INN MOTELS ON THE LAKE 1973 W. Shagawa Rd, P.O. Box 148; Ely, MN 55731 (218) 365-5154 www.shagawainn.com	28 G-6	30	Shagawa Lake Ely	Mid-May to Oct.	9	■	■	■	■	■	■	■	■	■	■	■	1.5 Miles from downtown at a quiet setting on Shagawa Lake. Nine knotty pine motel cabins, air conditioning, cable TV, daily & weekly rentals, pets welcome, reasonable rates, boat landing, docking, and freezer. See ad page - 30

Resorts

Location coordinates refer to maps on inside front cover.

	Map Location Coordinates	See Ad Page	Location (Lake or Town)	Distance from Ely	# of Cabins/Rooms	Handicap Accessible	Months Open	Planned Activities	Fireplaces	Restaurant	Bar on Premises	Sandy Beach	Pets Allowed	Internet Access	MN Fishing Licenses	Sauna	Guide Service	
CAMP VAN VAC 2714 Van Vac Lane, Ely, MN 55731 (218) 365-3782 www.campvanvac.com	5 F-5	23	Burntside Lake	6	25		May to Oct.					■	■	■		■		Friendly log & stone housekeeping cabins for 2-10 on stunning lake shore, woods, trails. Wood stoves, central showers & toilets, sauna. Boats, canoes, kayaks, pontoon, gas. Rates: \$600-1,800/week July & August. 20% discount Spring & Fall. See ad page – 23.
CANOE COUNTRY CABINS P.O. Box 30, Ely, MN, 55731 218-365-4046 www.canoeountryoutfitters.com	6 E-12	25	Moose Lake	20	5								■	■		■	■	Wilderness fishing on Moose Lake Chain and Basswood Lake. Boat, motor, and canoe rentals available daily or weekly. RV & tent campground. Canoe trip outfitting. Olson family owned and operated for 3 generations! See ad page – 25.
CUSTOM CABIN RENTALS 14663 Vosburgh Road, Ely, MN 55731 218-365-6947 www.customcabins.com	8 D-12	26	Moose Lake	20	8		May to Oct.		■				■	■		■		Custom-designed vacations. Modern housekeeping cabins in unique settings with easy access to Basswood Lk. Guides, boats, motors, bait, gas, canoes, Internet. Full-service resort with privacy no other resort offers. See ad page – 26.
ESPLAND'S RESORT 1540 Grant McMahan Blvd, Ely, MN 55731 218-365-5282 or 612-867-4606	18 G-8		Shagawa Lake	3.5	4		May to Sept.						■					4 Housekeeping cabins 3 ½ miles from Ely. Pet-friendly, TV, gas grills, campfire area, kayaks, canoe, and paddle boat to use.
GARDEN LAKE RESORT 13705 Mill Rd, Ely, MN 55731 218-365-5498 www.gardenlakeresort.com	12 G-8		Garden Lake	6	4 8		12		■			■	■	■			■	4-Cabin housekeeping resort! Modern, clean, free wireless Internet, furnished boats, gas grills, chain of lakes, BWCAW access, docks, electric, full service, fireplaces, TV-DVD, campfire, playground, ramp, deck and air conditioned.
GRAND ELY LODGE RESORT & EVENT CENTER 400 North Pioneer Road, Ely, MN 55731 www.grandelylodge.com info@grandelylodge.com	L&1 G-6	31	Shagawa Lake	2	61	■	12	■		■	■	■	■	■	■	■	■	Pool & whirlpool, restaurant, lounge & banquet area. FREE use of canoes, kayaks, paddle boats & snowshoes. Boat & Ice house rental. Internet Access. Fireside lobby, *Nightly-Weekly* rates. Open 365 days. 1 mile from downtown Ely. See ad page – 31.
LaTOURELL'S RESORT P.O. Box 239, Ely, MN 55731 (218) 365-4531 www.latoourells.com	16 D-13	25	Moose Lake	21	10		May to Oct.		■				■	■	■		■	3 generations providing wilderness vacations. "Gateway to Wilderness Fishing". Closest resort to Basswood Lake and world class fishing. Housekeeping cabins with A/C & top notch boats, motors and guides. Also hiking and canoeing from your cabin. See ad page – 25.
LODGE OF WHISPERING PINES & OUTFITTERS 3060 Echo Trail, Ely, MN 55731 218-343-7714	10 B-4	35	Ely	20	11		May to Oct.		■			■	■	■	■	■	■	Remote, off-grid. Surrounded by BWCA & national forest. "Your link with Nature" A true wilderness resort, located on the scenic Echo Trail & island dotted Big Lake. Cabins with hummingbirds at your window, good fishing, picnic spots and trails. See ad page – 35.
PACKSACK CANOE TRIPS & LOG CABINS 129 Winton Point Road, Winton, MN 55731 218-365-3788 www.packsackcanoetrips.com	13 F-8	25	Fall Lake	3	3		May to Oct.					■		■	■			Lake shore housekeeping log cabins and bunkhouse on Fall Lake, 3 miles from Ely. Access to Basswood Lake. Canoe, boat, motor, portage wheel, pontoon rental. High speed wireless Internet. Live webcam at www.packsackcanoetrips.com. See ad page – 25.
RIVER POINT RESORT & OUTFITTING CO. 12007 River Point Rd (218) 365-6604 www.riverpointresort.com "Naturally Superior"™	26 J-8		Birch Lake S. Kawishiwi River	8.5	13		May to Oct.		■			■		■		■	■	Magnificent mile-long private peninsula bordered by water w/BWCA access at this "away from it all" unparalleled resort. Secluded lakefront cabins w/screen porch, honeymoon villas, and designer chalets sprinkle the shoreline. New sauna, A/C.
SHAGAWA INN RESORT 1973 W. Shagawa Rd, P.O. Box 148, Ely, MN 55731 (218) 365-5154 www.shagawainn.com	28 G-6	30	Shagawa Lake		6		May to Oct.		■				■	■				Housekeeping cabins from 1-3 bedrooms, private docks – motel cabins, small campground, cable TV, air-conditioning, BBQ grills, boats, motors, freezer and boat landing. See ad page – 30.

■ = On Site

**BUSINESS LOCATIONS ARE INDICATED BY
LETTERED DOTS OR NUMBERED DOTS ON THE
MAPS ON THE INSIDE FRONT COVER.**



Photo by Donna Meier

Vacation Hotline | 218-365-6123 | ExperienceEly.com

Canoe Outfitters

Location coordinates refer to maps on inside front cover.

Canoe Outfitters	Map Location Coordinates	See Ad Page	Location (Lake or Town)	Youth Group Rates	Guide Service	Overnight accommodations on premises	Cont. Breakfast	Bait	MN Fishing Licenses	Tow Service	Restaurant	Permit Issuing	■ = On Site BUSINESS LOCATIONS ARE INDICATED BY LETTERED DOTS OR NUMBERED DOTS ON THE MAPS ON THE INSIDE FRONT COVER.
CANOE COUNTRY OUTFITTERS P.O. Box 30 Ely, MN 55731 218-365-4046 www.canoeountryoutfitters.com	C	30	Ely	■	■	■		■	■	■		■	Olson family-owned and operated for 3 generations! Complete and partial ultra light outfitting. Kevlar and aluminum canoes. Van shuttles, towboat service, lodging, campground, cabin rentals. Providing quality rentals and services since 1946! See ad page – 30.
CLIFF WOLD'S OUTFITTING COMPANY 1731 E. Sheridan St., Ely, MN 55731 (218) 365-3267 www.cliffwolds.com	P		Ely	■		■			■	■		■	Serving BWCA & Quetico canoe trippers since 1961. Family owned and operated. Top quality service, lightweight gear, and custom packed canoe trail food (our own recipes). Reasonable rates & group discounts. Private bunkroom & campsite accommodations.
ECHO TRAIL OUTFITTERS 3060 Echo Trail, Ely, MN 55731 218-343-7714 www.LodgeofWhisperingPines.com	10 B-4	35	Big Lake		■	■			■			■	Premiere Lodging and Canoe outfitting on the Echo Trail close to the Stuart River, Moose River, Indian Sioux Huster entry points. Overnight lodging, sauna, showers, transport and campsites. See ad page – 35.
ELY OUTFITTING COMPANY 529 E. Sheridan St., Ely, MN 55731 218-343-7951 www.ElyOutfittingCompany.com	Q		Ely	■	■	■		■		■		■	Quality BWCA and Quetico canoe trip outfitting for friends and families. Expert trip planning assistance from our friendly, trail-wise staff. Complete outfitting packages. Kevlar canoes and gear rentals. Guided trips. First-timers welcome.
LATOURELL'S MOOSE LAKE OUTFITTERS P.O. Box 239; Ely, MN 55731 (218) 365-4531 www.latourells.com	16 D-13	25	Moose Lake Chain of Lakes	■	■	■	■	■	■	■		■	Closest outfitter to BWCA & Quetico. Family operated. 3 Generations of experience providing wilderness canoe trips. Top-notch service, canoes & equipment. 1st Class tow service. "Gateway to Wilderness Fishing." See ad page – 25.
NORTHERN TIER NATIONAL HIGH ADVENTURE 14790 Moose Lake Road Ely, MN 55731 (218) 365-4811 www.ntier.org	43 D-13		Moose Lake	■	■	■	■					■	Northern Tier your gateway to adventure in the Northwoods. Located on Moose Lake, our year-round outfitting services are available to assist with your adventures into the BWCAW. Call today to see how we can assist with your trip planning.
PACKSACK CANOE TRIPS & LOG CABINS 129 Winton Point Road, Winton, MN 55731 218-365-3788 www.packsackcanoetrips.com	13 F-8	25	Fall Lake	■		■	■		■	■		■	Complete or partial outfitting. Unique lakeside log bunkhouse. Located on Fall Lake. Personalized service with trip routing and permit issuing. Central location with transportation to all entry points. Towboat service to top of Jackfish Bay. See ad page – 25.
PIRAGIS NORTHWOODS COMPANY 105 N. Central Ave.; Ely, MN 55731 (218) 365-6745 1-800-223-6565 www.piragis.com	F	30	Ely	■	■				■	■		■	Trip with outfitters who paddle these waters the most. New canoes/gear each year. Guided group trips, excellent service, expert routing. Planning & permits. Adam Macht, Tim Barton, and Drew Brockett. Planning and permits for BWCA and Quetico. See ad page – 30.
RIVER POINT OUTFITTING CO. & RESORT 12007 River Point Rd Ely, MN 55731 (218) 365-6604 elyoutfitters.com and riverpointoutfitting.com	26 J-8		Birch Lake S. Kawishiwi River	■		■		■				■	Paddle the Quiet Side® canoeing adventures with River Point Outfitting's tradition of excellence in equipment and services since 1944. Escape to an amazing mile-long peninsula bordered by water adjacent to the BWCA. Bunkhouse & Villa lodging. Expert, friendly routing. A+ rated by BBB.
VOYAGEUR NORTH CANOE OUTFITTERS 1829 E. Sheridan St., Ely, MN 55731 218-365-3251 vno@vnorth.com www.vnorth.com 1-800-848-5530	G	30	Ely	■		■		■	■	■		■	Centrally located. We service all BWCA/Quetico entries. Full/partial outfitting. Private overnight lodging. Largest bait/tackle shop in Ely. Featured on bwca.com and rated 5 STARS on Trip Advisor, Yelp and Google. Tanner & Silke Spicer. See ad page – 30.
WILLIAMS & HALL OUTFITTERS P.O. Box 358; Ely, MN 55731 218-365-5837 www.williamsandhall.com	41 D-12	25	Moose Lake	■	■	■	■	■	■	■	■	■	Strategically located on Moose Lake. Great for Quetico and BWCA trips. Complete and partial outfitting for groups and individuals. Bunkrooms, dining room, tow service and van service. Professional guides. See ad page – 25.

Campgrounds

Location coordinates refer to maps on inside front cover.

<div>Campgrounds</div> <div>Location coordinates refer to maps on inside front cover.</div>																		
	Map Location Coordinates	See Ad Page	Location (Lake or Town)	Distance from Ely	Number of Sites	Trailer / Tent Sites	Dump Station	Electric Hook-up	Water Hook-up	Fire Pits & Firewood	Flush Toilets	Showers	Swimming	Boat/Motor Rental	Bait	Food/Snack Bar/Store	Laundry Facilities	<div>■ = On Site</div> <div>BUSINESS LOCATIONS ARE INDICATED BY LETTERED DOTS OR NUMBERED DOTS ON THE MAPS ON THE INSIDE FRONT COVER.</div>
CANOE COUNTRY CAMPGROUND P.O. Box 30 Ely, MN 55731 218-365-4046 www.canoeountryoutfitters.com	C	30	Moose Lake	20	20	■	■	■	■	■	■	■	■	■	■	■	■	RV and tent campground. Use boats with motors on the Moose Lake chain and Basswood Lake. Canoe-only lakes also available. Fishing-Hiking-Sightseeing. Boat-motor-canoe-kayak rentals available on-site. See ad page – 30.
WHISPERING PINES CAMPGROUND 3060 Echo Trail, Ely, MN 55731 218-343-7714 www.LodgeofWhisperingPines.com	10 B-4	35	Big Lake	20	6	■	■	■	■					■	■	■	■	Our six campsites are located along the shoreline and each are separated by trees for seclusion. Travel trailers and pop-ups to 25 feet. Tents are welcome too. See ad page – 35.

Camps

Location coordinates refer to maps on inside front cover.

	Map Location Coordinates	See Ad Page	Location (Lake or Town)	Distance from Ely	Months Open	Number of Cabins	Handicap Accessible	Planned Activities	Fireplaces	Sandy Beach	Sauna	Guide Service	Pets Allowed	Internet Access	
<p>■ = On Site</p> <p>BUSINESS LOCATIONS ARE INDICATED BY LETTERED DOTS OR NUMBERED DOTS ON THE MAPS ON THE INSIDE FRONT COVER.</p>															
YMCA CAMP DU NORD 3606 North Arm Road, Ely, MN 612-822-2267 dunord.org	48 D-5	27	Burntside Lake	16	12	44	■	■	■	■	■	■			Relaxation, exploration and community are at YMCA Camp du Nord, a year-round destination for families and groups on Burntside Lake near the BWCAW. Enjoy hiking, skiing, paddling, snowshoeing and the traditional Finnish sauna. See ad page – 27.
YMCA CAMP NORTHERN LIGHTS 9089 Highway 21 N Babbitt MN 55706 612-822-2267 campnorthernlights.org	50 K-5	27	Bear Island Lake	11	12	33		■	■	■	■	■	■	■	Escape to the northwoods and visit YMCA Camp Northern Lights, a year-round destination for families on Bear Island Lake near the BWCAW. Cozy and comfortable cabins include all the amenities you need for a stress free vacation. See ad page – 27.

Guide Service



Photo by Anja Breihagen

Cut down on your learning curve with a skilled mentor who knows where the fish are biting and on which bait, how to set up camp and cook dinner in the rain without everyone getting wet and cold, what to bring and what to leave behind, how to keep a whole group safe, when to teach it and when to just do it. Ely guides are companionable, experienced, good teachers, and hard workers. The jobs are highly competitive, so only the best get the work.

GUIDE/FISHING – NATURALIST

Boundary Waters Guide Service

Quality outfitted and guided canoe trips for families and friends. www.BoundaryWatersGuideService.com
529 E Sheridan St Ely • 218-343-7951

Ely Fishing Guide Company, LLC

520 E Washington Ely • 218-349-9916

GUIDE/SLED DOG

Cast Outdoor Adventures

1270 Black Wolf Trail Ely • 218-296-8650

Chilly Dogs Sled Dog Trips

1557 Esterberg Road Ely • 218-365-4726

White Wolf Dog Sled Trips

2141 Hwy 1 Ely • 218-365-6815

Wintergreen Dogsled Lodge

Now in our 39th season, Wintergreen is the north country's most experienced dogsledding center. Cited as best in the business by National Geographic Adventure Magazine. 1101 Ring Rock Road Ely • 218-349-6128
www.dogsledding.com See ad on page 33.

TOW SERVICE

Canoe Country Outfitters

Towboat service from Moose Lake to the Canadian border at Prairie Portage, Basswood Lake, Ensign, & Birch Lakes. Complete & partial outfitting, campground, bunkhouse, free parking. PO Box 30 Ely www.canocountryoutfitters.com 218-365-4046. See ads on page 25 & 30.

LaTourell's Moose Lake Outfitters

Unequalled location & tow service with competitive rates. The closest tow service to the BWCA & Quetico with drive-to-docks. Known for our dependability, experience & top notch equipment. Serving Ensign, Birch, Prairie Portage & all Basswood locations. Complete & partial outfitting, showers, private bunkrooms and parking. 218-365-4531 www.latourells.com See ad on page 25.

Packsack Canoe Trips

(Fall Lake) Towboat service to the Newton Portage or to the top of Jackfish Bay via the Fall Lake entry. Shuttle service to surrounding entry points. Complete or partial outfitting; private parking, lakeside log bunkhouse, showers. 218-365-3788 www.packsackcanoetrips.com See ad on page 25.



Photo by Michelle Wild

Grant McMahan Boulevard

County Road 88



*Me (thinking of the 4-mile long Trezona Trail and Miners Lake):
Sure! Meet you at the trailhead.*

*15 minutes later my friend is heading away from
the Trezona heading west of town.*

Me: Where are you going?

Friend: Around Shagawa Lake. Come on!

*Me (trying to recall a map to get some idea of how
far that would be): Isn't that kind of far?*

*But my friend was too far ahead to hear me. Three miles out of town we
turned onto Grant McMahan Boulevard—a fancy name for a small country
road that I later learned was named for a prominent Ely business man
who vehemently opposed construction of this road. We stopped at the
Burntside River bridge and were lucky enough to catch sight of two otters
cavorting in the current. A little farther on we turned into the historic
Burntside Lodge just to look at the classic cabins and pristine waters of
Burntside Lake. Back on the Boulevard we came to great views of Shagawa
Lake plus heart-pumping hills that put my gym routine to shame.*

*Friend: If you want to go farther we can take the road to
Winton and stop off at the Longbranch for a swim.*

Me (panting and trying to ignore the burn in my thighs): Maybe next time.

*Then we were at the Shagawa River bridge and were rewarded by the
amazing sight of trumpeter swans feeding in the shallows. Just a little
farther and we were back at the trailhead after logging 18 miles.*

Friend: Want to do the Fernberg tomorrow?

Me (realizing that would be 40 miles out and back): Maybe next week...

Photo by Donna Meier

RESORTS

Camp Van Vac LLC.

2714 Van Vac Ln Ely

218-365-3782

Espland's Resort

1540 Grant McMahan Blvd Ely

218-365-5282

VACATION HOME RENTAL

The Cabin at Echo's End

[Airbnb.com/h/echos-end-ely](https://airbnb.com/h/echos-end-ely)



Photo by Thomas Johnson

CAMP VAN VAC
A LAKESIDE RESORT
2714 Van Vac Lane, Ely, MN 55731



A romantic, affordable resort vacation in a secluded lakeside forest for just you or the whole family.
Special 20% Discount in Spring & Fall
(218) 365-3782 • www.campvanvac.com



Photo by Wyatt Kauppi

46th Annual
BLUEBERRY/ART
FESTIVAL



ELY'S
PREMIER
FESTIVAL

Arts & Crafts
Family Fun
Food • Beer Garden

July 24-26, 2026



Fernberg Trail

Today I drove Highway 169, which starts in Tulsa, Oklahoma, from southern Minnesota through Minneapolis, on up to the Iron Range, and into Ely where it becomes the main thoroughfare, Sheridan Street. But I didn't quit there. I continued east of Ely, a 20-mile stretch called "The Fernberg" by locals, to the literal End of the Road, 30 feet from the shore of Lake One, a popular put in for paddlers heading into the wilderness. Here, happy to get out of my car, I was greeted by a "Quork" from a passing raven, the aroma of pine needles warmed by the sun, and the splash of cool clean water as I took a quick dip in the lake. It was a perfect journey's end!

Photo by Wyatt Kauppi

RESORTS

Canoe Country Cabins	14623 Moose Lake Rd Ely	218-365-4046
Custom Cabin Rentals	14663 Vosburgh Rd Ely	218-365-6947
LaTourell's Resort	14793 Moose Lake Rd Ely	218-365-4531
Northwind Lodge	2267 Fernberg Road Ely	218-365-5489
Packsack Log Cabins	129 Winton Point Rd Winton	218-365-3788
Snowbank Lodge and Outfitters	14564 Snow Lodge Road Ely	218-365-6032
Veterans On The Lake	161 Fernberg Road Ely	218-365-6900

OUTFITTERS

LaTourell's Moose Lake Outfitters	14793 Moose Lake Rd Ely	218-365-4531
Northern Tier High Adventure	14790 Moose Lake Rd Ely	218-365-4811
Packsack Canoe Trips	129 Winton Point Rd. Winton	218-365-3788
Williams & Hall Wilderness Outfitters	14694 Vosburgh Rd Ely	218-365-5837

CAMPGROUNDS

Canoe Country Campgrounds	14623 Moose Lake Rd Ely	218-365-4046
---------------------------	-------------------------	--------------

REMOTE LODGING

Log Cabin Hideaways	Water/Ice accessible Ely	218-235-9669
---------------------	--------------------------	--------------

VACATION HOME RENTALS

The Boundaries Lake Home	Shady Lane Ely	507-450-5565
--------------------------	----------------	--------------

© Minnesota Office of Tourism



Packsack Canoe Trips & LOG CABINS

We offer great personal service!

- Complete & Partial Outfitting
- Unique Lakeside Log Bunkhouse
- Special Group Rates
- Personalized Trip Planning
- Ultra Lightweight Equipment
- Fly-in Fishing Trips
- Tow Service
- Clean, Modern, Lakeside, Housekeeping Cabins
- Boat, Motor, Canoe, and Portage Wheel Rental
- Access to Basswood Lake
- Guide Service

Located on Fall Lake, just 3 miles from Ely
 Nick & Danielle Ott • P.O. Box 780 • Ely, MN 55731

Call Today! 218-365-3788
www.packsackcanotrips.com

BOUNDARY WATERS & QUETICO PARK



Williams and Hall

WILDERNESS GUIDES AND OUTFITTERS

*We have superb lakeside accommodations, great gear and food...
 "it's the best there is."*

218-365-5837 www.williamsandhall.com
 e-mail: canoe@williamsandhall.com

Located on Moose Lake

CANOE COUNTRY

Cabins & Campground



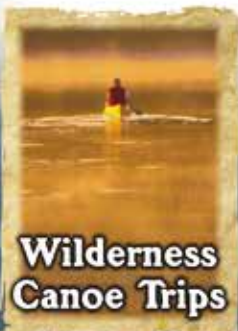
Housekeeping Cabins
 Tent & RV Campground
 Access to Basswood & BWCA Lakes
 Walleye, Northern & Bass Fishing
 Boat, Motor, Canoe Rentals
 Canoe Trip Outfitting

218-365-4046
 P.O. Box 30, Ely, MN 55731 • www.canocountryoutfitters.com • e-mail: cco@frontiernet.net

Boundary Waters & Quetico Wilderness Trips

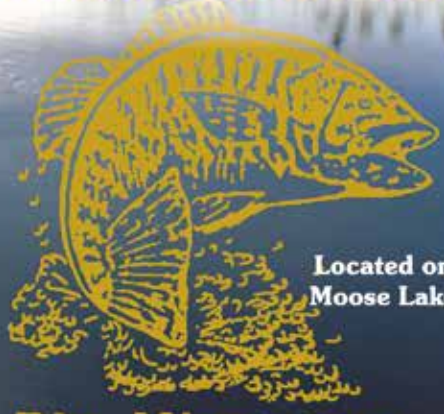
La Tourell's

"Gateway to Wilderness Fishing"




Wilderness Canoe Trips

- Complete & Partial Outfitting
- Overnight Accommodations
- Towboat & Shuttle Service
- 3 Generations of Experience



Located on Moose Lake

Ely, Minnesota
218-365-4531
www.latourells.com



Fishing Resort

- Modern Housekeeping Cabins
- Top-notch Boats & Motors
- Excellent Facilities & Guides
- We Cater to Fishing Enthusiasts

The Closest Resort & Outfitter to the BWCA, Quetico Park, & Basswood Lake



Custom Cabin Rentals

Distinctive Cabins • Unique Settings • Moose Lake Chain • Basswood Access

14663 Vosburgh Rd., Ely, MN (218)365-6947

email: info@customcabins.com website: www.customcabins.com



**Be a volunteer. Be a sponsor. Be a spectator.
Be here in Ely, Minnesota race weekend.**

Enjoy watching 6-dog and 8-dog teams leave the
new race start at the Ely Regional Trailhead at
9 a.m. on Sunday morning.



Race Weekend: February 20-22, 2026

Friday, February 20

WolfTrack Prance - Live Music

Saturday, February 21

Start - Finish Set up

Meet the Teams

Musher Dinner



Sunday, February 22—Race Day!



To the South

Our family was looking for an off-the-beaten-path experience on a rainy fall day, so we headed south on Highway 21 to visit the record cold spot for the state of Minnesota, Embarrass. Driving onto some of the many side roads, all with Finnish names, we were surprised to find many small farms with horses, cows, chickens, and huge gardens. At Sisu Heritage Museum the kids scrambled out of the car to climb on the antique farming equipment and take selfies by the 70 Below Zero thermometer. We headed back toward Ely, stopping in Babbitt to check out their golf course and grab lunch at a café. The rain had stopped, so we decided to go from rural to remote by taking the Tomahawk Trail to Highway 1. We passed the main entrance, crossed the Stony River, then we were in impressive pine forests for the rest of the trip. But not just pine—there was a blaze of golden aspen and bright red maple contrasting with the dark evergreens. We all agreed the highway department could charge admission to Highway 1 during the fall color season. And amazingly there was almost no traffic!

Photo by Wyatt Kauppi

RESORTS

River Point Resort & Outfitting Co.	12007 River Point Rd Ely	218-365-6604
Timber Bay Lodge	8347 Timber Bay Rd Babbitt	218-827-3682
North of North Resort	12265 Highway 1 Ely	320-267-8894

MOTELS/HOTELS

River Point Villas & Chalets On The Lake	12007 River Point Rd Ely	218-365-6604
--	--------------------------	--------------

OUTFITTERS

River Point Outfitting Co. & Resort	12007 River Point Rd Ely	218-365-6604
-------------------------------------	--------------------------	--------------

CAMPS

YMCA Camp Northern Lights	9089 Hwy 21 N Babbitt	218-208-3209
---------------------------	-----------------------	--------------

HOUSEBOATS

Timber Bay Houseboats	8347 Timber Bay Rd Babbitt	218-827-3682
-----------------------	----------------------------	--------------



the **YMCA**

FOR YOUTH DEVELOPMENT
FOR HEALTHY LIVING
FOR SOCIAL RESPONSIBILITY

YMCA FAMILY CAMP CAMP DU NORD & CAMP NORTHERN LIGHTS

YOUR NEW FAVORITE YEAR-ROUND DESTINATION
IN ELY AND BABBITT MINNESOTA

Family Camps with kid's activities
Book Your Own Getaway

dunord.org | campnorthernlights.org | 612-822-2267

To the West

We just finished volunteering for the WolfTrack Classic Sled Dog Race. It's held the last weekend in February and we were so excited to participate. The race route runs along the Taconite Trail to Bear Head Lake State Park and back to Ely. Our family was one of the groups working a road crossing in Bear Head, so we were able to see the 8-dog teams as they came across Bear Head Lake. Wow, were the dogs full of energy!

We were told by race organizers that the sled dog teams can only run on the Taconite Trail once a year for the race. The Taconite is part of a large snowmobile trail system covering hundreds of miles.

The snowmobilers out on the trail today were amazing. They pulled over and watched the teams pass by. They seemed to enjoy watching the dogs too. We thanked the snowmobilers as they went through our crossing for sharing their trail today.

We found out there is an ATV trail that runs through the same general area too. As we turned onto Bear Head State Park Road, several Fat Tire Bikes were cruising along the Mesabi Trail that parallels Highway 169. We didn't realize there were so many trails to explore here. We definitely have to come back and try the ATV and bike trails out next summer.

Photo by Luke Yost

CAMPGROUNDS

Bear Head Lake State Park	9301 Bear Head State Park Rd Ely	218-235-2520
----------------------------------	----------------------------------	--------------

VACATION HOME RENTAL

Ely Cabin Collective	Mud Creek Rd Ely	elylogcabin@gmail.com
Piney Woods Retreat	Bear Head State Park Rd Ely	pineywoodsretreat@gmail.com

BED AND BREAKFAST

Tower Cafe Air BnB	411 Main St Tower	218-670-5889
---------------------------	-------------------	--------------



ATV Adventures

Await You in Ely, Minnesota





Ely

With a mile-long main street and a million-acre neighborhood, Ely is a lively community with easy access to your favorite outdoor recreation. We have ATV and snowmobile trails; a top notch XC ski system for winter and bike trail for summer; wilderness or in-town hiking, skiing, snowshoeing, and paddling; ice skating rinks and a skateboard park; playgrounds and picnic areas. But Ely isn't all about outdoor recreation. We also have amazing arts organizations that welcome new participants, clubs and groups that address a huge variety of interests from ham radio to politics, community service to Bingo, pre-school play to senior exercise. Frequently found on various "Best Places to Live or Visit" lists, Ely will impress you with surprising opportunities for both high adventure and relaxing experiences.

Photo by Michelle Wild

RESORTS

Grand Ely Lodge Resort & Event Center	400 N Pioneer Rd Ely	218-365-6565
Shagawa Beach Cabins	1892 W Shagawa Rd Ely	218-235-8163
Shagawa Inn Resort	1973 W Shagawa Rd Ely	218-365-5154
Voyageur North Resort	1829 E Sheridan St Ely	218-365-3251

MOTELS/HOTELS

Canoe On Inn	110 N 2nd Ave W Ely	218-235-6106
Grand Ely Lodge Resort & Event Center	400 N Pioneer Rd Ely	218-365-6565
Northwoods Inn & Suites	1605 E Sheridan St Ely	218-365-2873
Paddle Inn	1314 E Sheridan St Ely	888-270-2245
Shagawa Inn Motels on the Lake	1973 W Shagawa Rd Ely	218-365-5154
Stay Inn Ely	112 W Sheridan St Ely	218-365-6010

OUTFITTERS

Canadian Waters Outfitters Inc.	111 E Sheridan St Ely	800-255-2922
Canoe Country Outfitter	629 E Sheridan St Ely	218-365-4046
Cliff Wold's Canoe Trip Outfitting Co.	1731 E Sheridan St Ely	218-365-3267
Ely Outfitting Co.	529 E Sheridan St Ely	218-343-7951
Piragis Northwoods Co. Outfitting	105 N Central Ave Ely	800-223-6565
Voyageur North Outfitters	1829 E Sheridan St Ely	218-365-3251
Way To Go Outfitters	1920 E Sheridan St Ely	218-365-7676

VACATION HOME RENTAL

Ely Camp Haus	346 E Camp St Ely	218-235-4153
Sheridan Inn, LLC	244 W Sheridan St Ely	314-753-6267
The Atomic Lodge	24 E Boundary St Ely	218-851-1133

BED AND BREAKFAST

Raven's Wing Bed & Breakfast	6 North Yukon Dr Ely	218-235-3432
------------------------------	----------------------	--------------



Piragis Outfitters

Your Friends in the Great Northwoods
Call Us Today to Plan Your Boundary Waters Canoe Trip
800-223-6565 105 N Central Ave., Ely, MN piragis.com



Photo by Catherine Raza

Shagawa Inn 218-365-5154

On Ely's Fabulous Shagawa Lake

Superb Walleye, Smallmouth Bass & Northern Pike Fishing

Housekeeping & Motel Cabins with Cable TV & Air Conditioning • Small, Quiet Campground

Box 148, Dept. C, Ely, MN 55731
www.shagawainn.com

NORTHWOODS INN & SUITES

- Clean, Comfortable Rooms
- Remote Control • Cable TV
- Non-Smoking Rooms • No Pets

1605 E. Sheridan St. • Ely, M 55731
218-365-2873

Raven's Wing (218) 235-3432
 BED & BREAKFAST
ravenswingbnbelymn.com

Voyageur North Outfitters

Wilderness Canoe Trips into the Boundary Waters Canoe Area and Quetico Provincial Park

- ◆ Complete and Partial Outfitting ◆ Special Rates for Groups
- ◆ Ultra Lightweight Equipment ◆ Fly-in Trips and Tow Service
- ◆ Specializing in Canoe and Fishing Trips ◆ Solo Canoes & Sea Kayaks
- ◆ Best Selection of Live Bait and Tackle of Any Outfitter in Town
- ◆ Deluxe Bunkhouse Accommodations

CALL 218-365-3251

Tanner & Silke Spicer, 1829 E. Sheridan St., Ely, MN 55731 • www.vnorth.com • vno@vnorth.com • Open Daily 5 a.m - 10 p.m.

Serving the canoeist since 1946!

CANOE COUNTRY Outfitters

- Complete & Partial Ultra-Light Weight Outfitting
- Wenonah, Souris River & Northstar Kevlar Canoes
- Towboat Service & Van Shuttles
- RV/Tent Campground & Cabin Rentals
- Family-Owned & Operated for 3 Generations

218-365-4046

P.O. Box 30, Ely, MN 55731 • www.canoeconomyoutfitters.com • e-mail: cco@frontiernet.net



1 Mile from Downtown Ely
 Restaurant • Lounge
 Pool • Hot Tub • Sauna
 Marina • Playground
 Event Rooms & more!
Book your get-a-way today!
grandelylodge.com
218-365-6565

GRAND ELY LODGE
 RESORT & EVENT CENTER

REDFEATHER
 OUTDOORS

CANOES, SNOWSHOES, & OUTDOOR GEAR

redfeather.com | (608) 394-2420
 125 N Central Ave, Ely, MN 55731

MADE IN THE
 USA



Photo by Daniel Raza



Photo by Wyatt Kauppi

Kawishiwi Trail

I had no idea how to pronounce "Kawishiwi" when I first visited Ely, so I had to ask. Then I had to practice saying it slowly a few times—Kuh-WISH-uh-wee. But what does it mean? The Ojibway word has no direct translation into English, but the jist may be something like "where the spirit crosses over." The Kawishiwi River is a waterway of lakes and rivers that stretches from deep inside the BWCAW to the magnificent Kawishiwi Falls on Fall Lake. It includes Farm and Garden Lakes, which seemed like strange names in this world of boreal forests. I learned that Ojibway families indeed had farms and gardens here, and these lakes often produce bountiful crops of wild rice. Today the shores are dotted with lovely resorts, summer cabins, and year-round homes. The road ended at Silver Rapids and crossing the river required a boat or good ice until 1908, when a one-lane wooden bridge was built, but today the trail extends to the edge of the BWCAW with a fully modern bridge.



Photo by Luke Yost

RESORTS		
Garden Lake Resort	13705 Mill Road Ely	218-365-5498
Silver Rapids Lodge	459 Kawishiwi Trail Ely	218-365-4877
CAMPS		
Camp Voyageur	709 Voyageur Rd Ely	218-365-6042

MUSH YOUR OWN TEAM



Enjoy a Dogsled Vacation at America's Top Dogsled Center




PAUL & SUSAN SCHURKE'S DOGSLED LODGE

- 3 & 4 night Lodge-based Dogsled Vacations
- Boundary Waters Dogsled Camping Trips
- For all ages, no gear or skills needed
- Friendly, beautiful pure-bred Eskimo dogs
- Arctic Trips with explorer Paul Schurke

(218) 349-6128
www.dogsledding.com

Our famous Made-in-Ely clothing (& boots) can be rented in all sizes from:



www.wintergreennorthernwear.com

ELY IS THE PLACE FOR WINTER ADVENTURES



ExperienceEly.com

32nd Annual

Harvest Moon Festival

September 11-13, 2026

Artists & Crafters | Food Court



Photo by James Stone

Vacation Hotline | 218-365-6123 | ExperienceEly.com

Echo Trail

I'd been living in Ely just a few weeks when a friend suggested I drive up the Echo Trail for a hike on my day off. I drove "Buggy", my little VW, past the end of the blacktop and felt like I was entering real wilderness. There were almost no driveways and just a few Forest Service signs for trails and BWCAW entry points. Hoping to see my first moose ever, I chose a likely looking trail and started walking. A mother grouse made a fuss in the middle of the trail while her babies scuttled under the brush, a Canada jay befriended me as I ate my sandwich, and an eagle landed in a tall red pine at the edge of a pond—but no moose. As I headed back toward Ely, a huge dark form materialized in the road ahead. I had the impression a mountain had mysteriously appeared, but then realized it was a huge bull moose. It seemed like I could drive Buggy right under his belly!

Photo by James Stone

RESORTS

Big Lake Wilderness Lodge	4988 Big Lake Rd Ely	218-235-8925
Echo Shores Resort	1522 Echo Trail Ely	800-777-4413
Lodge Of Whispering Pines & Outfitters	3060 Echo Trail Ely	218-343-7714

OUTFITTERS

Echo Trail Outfitters	3060 Echo Trail Ely	218-343-7714
-----------------------	---------------------	--------------

CAMPS

YMCA Camp Du Nord	3606 North Arm Rd Ely	218-365-0365
-------------------	-----------------------	--------------

CAMPGROUND

Whispering Pines Campground	3060 Echo Trail Ely	218-343-7714
-----------------------------	---------------------	--------------

VACATION HOME RENTAL

Burntside Lake Cabin Complex	vrbo.com/738704	218-365-6620
------------------------------	-----------------	--------------

CABINS, CAMPSITES, CANOES



LODGE OF

WHISPERING PINES

& Outfitters

- Canoeing
- Paddling
- Fishing
- Sandy Beach
- Camping
- Hiking Trails

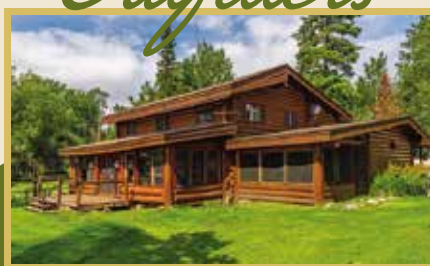
A perfect way of teaching your children and grandchildren the legacy of wilderness traveled by canoe.

- Solar Powered
- Bunk House
- Canoe Trips
- Fishing Trips
- Boat Rentals
- Pet Friendly

Instructions for all levels



Great **FAMILY & VACATION**
Fishing TRIPS
Guides Available



Large Group Historic Lodge Rental

FOR DETAILS *Visit*
lodgeofwhisperingpines.com

ELY'S HISTORIC BOUNDARY WATERS BASECAMP ON THE ECHO TRAIL



Hegman Lake Pictographs, located 15 miles northeast of Ely, MN on the Echo Trail.

Hegman Lake... Great for Day Trips

No experience is required for your canoe trip.



Echo Trail Outfitter
Ely, Minnesota

Your Link with Nature

Outfitting services are located on-site at the

Lodge of Whispering Pines

3060 Echo Trail Ely Minnesota. 55731

lodgeofwhisperingpines.com

Exciting News...

Starting on December 3, 2025, we are no longer nestled on the east end of town. Our new location is on the west end as you enter Ely on Highway 169. It's hard to miss the new, big beautiful building at the cross roads of all the area trails for hiking, biking, ATVing, and snowmobiling.

The new building offers public restrooms, a gathering area, a family wellness room, and our new office space. The facility also offers outdoor seating areas.



We still offer trail maps, attraction and event information, and so much more. We love what we do and we are excited to assist you at our new location, so let the planning begin. We look forward to hearing from you soon.



Visitor & Information Center

15 S. 4th Ave. W. - P.O. Box 357, Ely, MN 55731
fun@ely.org - Ely.org - 218-365-6123



Photo by James Stone

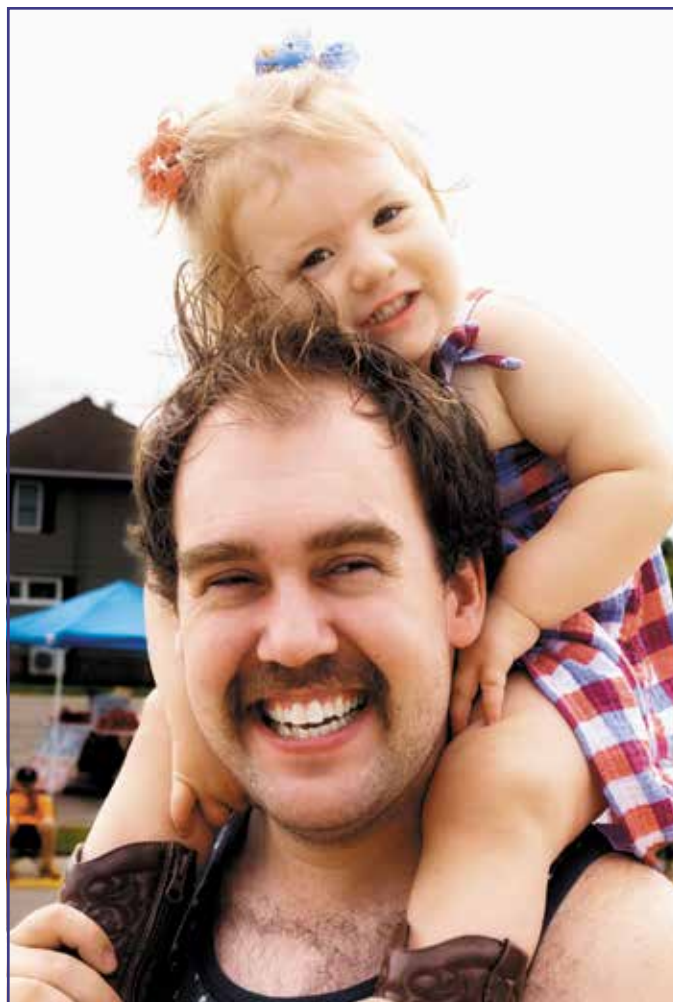


Photo by Michelle Wild

Dining & More

DINING & REFRESHMENTS

Boathouse Brewpub & Restaurant

47 E Sheridan St Ely
218-365-4301

Boundary Waters Kitchen & Market

141 E Chapman St Ely
218-994-2882

Ely DQ Grill & Chill

1441 E Sheridan St Ely
218-365-5101

Evergreen Restaurant & Antlers Lounge

Dining and relaxing indoors or on the deck overlooking Shagawa Lake. Breakfast – blueberry pancakes, omelets and more. Lunch – salads, chicken wild rice soup, panini's, burgers and sandwiches. Dinner – over 40 items. Walleye, pasta, chicken, ribs and more. Antlers Lounge – appetizers, wings, sandwiches, full bar, best wine selection on the lake and free popcorn – 4 big screen TVs. Wireless Internet access. Open to the public 365 days. One mile from downtown Ely. Grand Ely Lodge, 400 N Pioneer Rd Ely 218-365-6875

Frisky Otter Pub & Restaurant

302 E Sheridan St Ely
218-235-6266

Insula Restaurant

145 E Sheridan St Ely
218-365-4855

Northern Grounds

2 W Sheridan St Ely
218-365-6125

Tower Café

411 Main St Tower
218-670-5889

The Tower Café & Airbnb is a warm and welcoming spot in downtown Tower, MN, where community and connections come together. Our intentionally designed menu and specials blend classic comfort food and creative chef creations (we have cooks and yes true chefs on our team). We are known for our Sasquatch breakfast burrito, bread pudding and amazing cinnamon rolls. Check out our Facebook page (Tower Cafe Minnesota) for our most up-to-date hours, events, and daily specials. Open Wednesday-Sunday. Check our Facebook page for details. www.TowerCafeMN.com www.facebook.com/TowerCafeMinnesota

LIQUOR STORES

Mike's Liquor

401 E Sheridan Ely
218-365-5087

FRISKY OTTER PUB & EATERY



A place like no Otter!

www.FriskyOtterEly.com

BREAKFAST served on the weekend at 7:30am
Catch all your favorite games on one of our 10 TV'S

Steaks • Chops • Fish
Gourmet Sandwiches & Italian Specialties
Martinis • Fine Wine & Cold Beer
Outdoor Seating • Live Music

302 E. Sheridan Street . Ely, Minnesota 55731
218-235-6266



Retail Business

ART, CRAFT, FABRIC & YARN SUPPLIES

Sisu Designs Yarn Shop

Our shelves are filled with natural fiber yarns, needles, tools, accessories, and kits for both knitters and crocheters. We also create our own designs, host knitting retreats, and teach classes. 31 W Chapman St Ely 218-365-6613 www.sisudesigns.org

The Art Corner

301 W Sheridan St Ely 218-365-2263

BAIT & TACKLE SHOPS

Arrowhead Outdoors

1810 E Sheridan St Ely 218-365-5358

BUILDING SUPPLY, HARDWARE AND RENTAL EQUIPMENT

KJs True Value Hardware

303 E Sheridan St Ely 218-365-6724

Merhar's Ace Hardware

48 E Chapman St Ely 218-365-3129

CLOTHING, FOOTWEAR, SPORTING GOODS

Blue Loon Gallery & Boutique

6 E Sheridan St Ely 218-235-6184

Dirty Dog Manufacturing

1614 E Washington Street Ely 218-343-7778

Ely Sportswear Shop

21 E Sheridan St Ely 218-365-3855

Ely Surplus and Outdoor

129 N Central Ave Ely 218-365-4653

Elywear

2 E Sheridan St Ely 218-365-3000

Northern Toboggan Co.

203 E Sheridan St Ely 218-242-3234

Piragis Northwoods Company

105 N Central Ave Ely 800-223-6565

Pike River Products

515 Main St Tower 218-753-3828

Redfeather Outdoors

125 N. Central Ave Ely info@redfeather.com

Steger Mukluks

Our Famous Steger Mukluks are made in Ely, Minnesota! Our store is open at 33 E Sheridan! Call 218-365-3322! Go to our website, mukluks.com! Store opens daily at 10am throughout the summer/fall/winter! See ad on pg 40.

Wintergreen Northern Wear LLC

Wintergreen handcrafts quality outdoor apparel in our store on Ely's main street. Minnesota made, 4-season clothing inspired by the Boundary Waters Canoe Area, the Artie & other wild places. Field tested from Pole to Pole. Website: WintergreenNorthernWear.com 205 E Sheridan St Ely 218-365-6602

CONFERENCE CENTER & EVENT VENUE

Grand Ely Lodge Event Center

400 N Pioneer Rd Ely 218-365-6565

Northern Tier High Adventure

14790 Moose Lake Rd Ely 218-365-4811

FLORAL, GIFTS AND GARDENING

Ely Flower & Seed

145 W Camp Street Ely 218-365-6555

FOOD PRODUCTS

Brainstorm Bakery

402 E Sheridan Ely 218-235-6161

Ely's Old Fashioned Candy

228 E Sheridan St Ely 218-600-0810

Gene Hicks Gourmet Coffees LLC

PO Box 793 Ely 218-365-3822

Zup's Food Market, Inc.

1500 E Sheridan St Ely 218-365-3188

GALLERIES, PHOTOGRAPHY & VIDEO

Brandenburg Gallery

11 E Sheridan St Ely 877-493-8017

Kekekabic Studios

118 E Chapman St Ely rfshepherd@gmail.com

HOUSEWARES, FURNISHINGS, GIFTS, TOYS

J&L Ben Franklin & Rental

128 E Chapman St Ely 218-365-6724

Mealey's Gift & Sauna Shop

124 N Central Ave Ely 218-365-3639

Potluck Kitchenware

101 E Chapman St Ely 218-235-6135

ATTRACTIONS AND TOURS

Dorothy Molter Museum

Known as the Root Beer Lady of Knife Lake, Dorothy lived for 56 years in the wilderness serving homemade root beer, hospitality and medical care to guests and canoeists. Tour three of her original log cabins and explore a variety of themed exhibits including living in the wilderness, her root beer, history of the Boundary Waters and Northwoods ecology. www.rootbeerlady.com for hours, fees, programs & events. 2002 E Sheridan St Ely 218-365-4451. See ad on page 40.

Ely Golf Club

901 S Central Ave Ely 218-365-5932

Ely's Historic State Theater

238 E Sheridan St Ely 218-235-6300

Ely-Winton History Museum

The Ely-Winton History Museum presents the history and culture of our amazing area, from geology, native peoples, and immigrant communities, to the logging, and mining industries, to the BWCAW. Open noon to 4 PM Tuesday through Friday, and Saturdays during the summer. Admission is free! 1900 E Camp St Ely elywintonhistory.org 218-365-3226 ewhsmuseum@gmail.com [Facebook.com/ElyWintonHistoricalSociety](https://www.facebook.com/ElyWintonHistoricalSociety)

International Wolf Center

Tap into your love of nature at the International Wolf Center! Our expert educators await to introduce you to the wild world of wolves, where you can deepen your understanding of these incredible creatures. Choose from interactive exhibits, daily educational programs, thrilling wolf movies, live ambassador wolves and a Wolf Den Store for souvenirs and merch! Howl with us, your adventure awaits! Join us at 1396 HWY 169, Ely, and make memories that will last a lifetime. Get ready to howl with excitement; a world of discovery awaits! 218-365-4695.

Listening Point

Tours of Sigurd F. Olson's historic cabin on Burntside Lake, family home, and iconic writing shack. To visit, please schedule a tour on our website, listeningpointfoundation.org. No set cost, donations appreciated. info@listeningpointfoundation.org listeningpointfoundation.org

North American Bear Center

See Live Bears! The North American Bear Center is the only black bear and wildlife educational facility of its kind. We are dedicated to replacing myths with facts. Learn from our ambassador bears themselves on one of our Behind-the-Scenes tours. Our Main Hall has over 60 exhibits and videos about black bear behavior. Learn about animals that coexist with black bears in our Northwoods Ecology Hall. Our Cub Room for children encourages exploration by touch. Educational displays include a coloring & reading area, nature library, vocalization board, videos, and a walk-through bear den where children can act like bears and crawl inside and explore. Complete your visit by walking our 1.2 mile nature trail. Visit www.bear.org for our hours, daily programs and custom group programs. See ad on page 40.

RECREATIONAL MOTOR VEHICLES

Lossing's Powersports & Rentals

30 North Dr Babbitt 218-827-2635

Your Boat Club

3 E Sheridan St Ely 218-365-5020

SPA

Etoile du Nord Day Spa

1221 E Sheridan Street 218-235-4342



Photo by Diane Kromer

BEARS

And so much more!

NORTH AMERICAN
BEAR CENTER

NORTHWOODS ECOLOGY HALL

1926 Hwy 169, Ely, Minnesota • www.bear.org for hours • 1 mile west of Ely, 2 hours north of Duluth

**WELCOME
TO THE PACK!**

Visit **WOLF.ORG**
for hours & program schedule.



DAILY PROGRAMS • GIFT STORE • EXHIBITS • LIVE WOLVES

Preregister at
WOLF.ORG
to Save on
Admission



1396 HWY 169 • ELY, MN 55731 • 218-365-HOWL



STEGE MUKLUKS



The Warmest Winter Boots are Made in Ely, Minnesota!
Retail Store Open 10a - 6p Mon - Sat 10a - 4 Sun mukluks.com

DAILY MEMORIAL DAY WKND • LABOR DAY WKND*

**STOP IN FOR A
TASTE OF HISTORY!**

EXHIBITS
PROGRAMS
CLASSES
KID'S CAMP
EVENTS



**DOROTHY MOLTHER
THE ROOT BEER LADY**

CURRENT HOURS, FEES & SPECIAL EVENTS AT
WWW.ROOTBEERLADY.COM

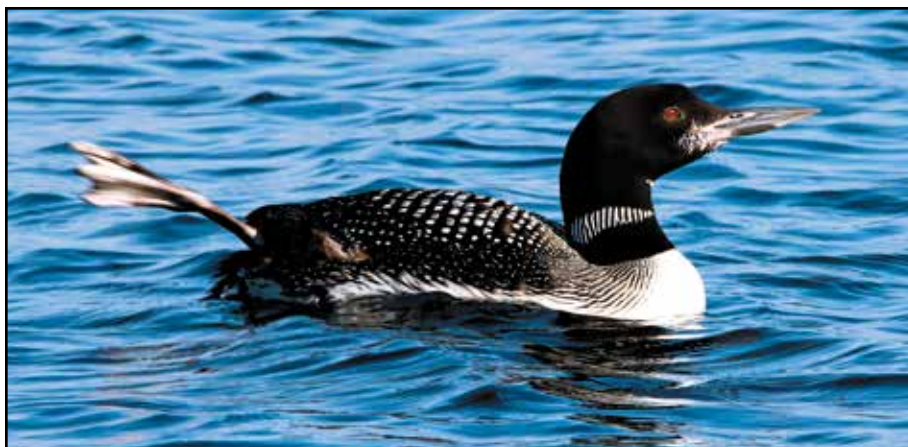


Photo by Thomas Johnson

Services

ACCOUNTING

Charles R Zeugner

10 N 1st Ave E, Suite 204 Ely 218-235-9234

ATTORNEYS

Defenbaugh Law Office

107 E Camp St Ely 218-365-4977

Klun Law Firm, P.A.

1 E Chapman St, PO Box 240, Ely 218-365-3221

AUTOMOTIVE

Range Cenex Ely

46 W Sheridan St Ely 218-365-6765

BUSINESS PARK & CENTER

Central Avenue Business Park, LLC

655 S Central Ave Ely 775-781-2047

COMMUNICATIONS & INTERNET

CTC

CTC is a full-service technology advisor and telecommunications provider offering fiber internet, phone, and business solutions to residents and businesses throughout central and northeastern Minnesota. 14385 Edgewood Drive, Baxter, MN 56425 800-753-9104 marketing@goctc.com goctc.com

Midco (Midcontinent Communications)

midco.com 800-888-1300

COMPUTERS, WEB & INTERNET

Voltz Technologies

410 E Sheridan St Ely 218-365-7783

CONTRACTORS

All Phase Construction

PO Box 633 Ely 218-365-6080

Christine Bleyhl, Architect

2211 Sibley Dr Ely 612-961-1371

Dutchman Tree Service, LLC

421 E James St Ely 218-929-2502

Kovall Construction

906 E Harvey St Ely 218-365-6842

Rock Country Masonry

2070 Highway 169 Ely 218-235-3471

Schulze Excavating, Inc.

2408 Hwy 169 Ely 218-343-6699

Zone 3 Landscaping

PO Box 313 Babbitt 218-235-0954

EDUCATION & BUSINESS SERVICES

The Entrepreneur's Source

dmickelson@esourcecoach.com 952-258-9021

FINANCIAL & INVESTMENT

Edward Jones

150 W Sheridan St Ely 888-368-5285

Ely Area Credit Union

2 E Chapman St Ely 218-365-3131

Frandsen Bank & Trust

102 E Sheridan St Ely 218-365-6121

Highland Bank

601 E Sheridan St Ely 218-365-6181

NorthRidge Community Credit Union

1321 E Sheridan St Ely 877-672-2848

Sunbelt Business Advisors

10 N 151 Ave E #209 Ely 218-235-4047

FITNESS & WEIGHT LOSS

Studio North - Dance & Fitness Center

1550 E Washington St Ely 218-365-2493

GOVERNMENT & PUBLIC SERVICES

Breitung Township

33 First Avenue Soudan MN 55782 218-753-6020

City of Babbitt

71 South Dr Babbitt 218-827-3464
cityhall@babbittmn.gov babbitt-mn.com

City of Ely

209 E Chapman St Ely 218-365-3224
www.Ely.MN.US

City of Embarrass

7503 Levander Rd Embarrass 218-984-2084

City of Winton

102 N Main St Winton 218-365-5941

U.S. Forest Service - Kawishiwi Ranger District

1393 Hwy 169 Ely 218-365-7600

Services *continued*

HEALTH & WELL-BEING

Ely Area Community Hub

760 Miners Dr Ely 218-235-1561

Ely Family Dental

40 N 1st Ave E Suite 5 Ely 218-365-3565

Ely Veterinary Clinic

318 E Miners Dr Ely 218-365-5911

Ely Vision & Optometry Ctr P.C.

38 E Harvey St Ely 218-365-4919

Ely-Bloomenson Community Hospital

328 W Conan St Ely 218-365-3271 Ely-Bloomenson Community Hospital features a fully staffed 24/7 Emergency Department with onsite lab, diagnostic imaging and rehab therapy services. Ely Community Pharmacy (owned and operated by EBCH) is open M-F 8am-6pm and Saturdays 9am-1pm. Call 218-365-8788 for easy prescription refills. www.ebch.org

HEATING, AC, PLUMBING & ELECTRICAL

Lakes Gas

1821 Hwy 53 Cook 218-590-4747

OJ's HVAC & Refrigeration, Inc.

2599 Hwy 169 Ely 218-235-7562

Superior Fuel Company

1842 E Sheridan St Ely 218-365-4042.

HOUSING & LONG TERM RENTALS

Pine Manor Townhouses

1421 E Camp St #7 Ely 218-365-6926

INSURANCE

Ely State Farm Keen Insurance

35 E Chapman St Ely 218-365-5104

Holden Duluth Insurance Agency

5713 Grand Ave Duluth MN 55807 800-569-4173

Land of Lakes Insurance Agency, Inc.

240 W Sheridan St Ely 218-235-4000

Norshor Insurance

628 E Sheridan St Ely 218-365-4665

LAUNDROMAT & LAUNDRY

Ely Speedwash

342 E Sheridan St Ely 218-994-7641

The Laundry Room

428 E Sheridan St Ely 218-235-0609

MARINA & SMALL ENGINE REPAIR

Joe's Marine & Repair, Inc.

Mercury outboards, Shoreland'r trailers, Stihl chainsaws and brushcutters. Mechanics on duty Monday-Saturday. Our showroom is filled with boating accessories and woodcutting supplies. 25 W Chapman Street Ely 218-365-6264 www.joes-marine.com

MEDIA & PUBLISHING

Boundary Waters Journal

9396 Rocky Ledge Rd Ely 218-365-6184

Ely Echo, North Country Saver & Angler

Get a FREE sample copy of Ely Echo weekly newspaper, the Voice of the Wilderness. Your source for local news, advertising, printing & fax services. Email edition \$40 year. 15 East Chapman St Ely 218-365-3141 elyecho@aol.com www.elyecho.com

Ely Shopper

243 E Chapman St Ely 218-365-3185

Raven Words Press & Ely Times

1210 Main St Ely 218-365-3375

Timberjay

PO Box 636 Tower 218-753-2950

REAL ESTATE

Bear Island Realty

943 E Sheridan St Ely 218-365-2800

Ely Realty

10 N 1st Ave E, Suite 206 Ely 218-365-2100

Northeast Title Company

545 E Sheridan St Ely 218-365-5256

RESOURCE EXTRACTION

Twin Metals Minnesota

400 Miners Dr Ely

STORAGE

R&R Transfer

420 N 15 Ave E Ely 218-235-2701

WASTE MANAGEMENT & ROLL OFF SERVICE

G-Men Environmental Services, Inc.

PO Box 269 Ely 218-365-5587

So many trails... So little time...

- Mesabi Trail
- Trezona Trail
- Hidden Valley Trail System
- Superior National Forest Roads
- Fernberg Trail
- Echo Trail

Plan for a longer stay.

Photo By: Wayne Bishop



Photo by Luke Yost

Live. Work. Play.

Why come to Ely for your vacation?

To see wolves up close. To wake each morning and choose between paddling into wilderness or fishing from a pontoon boat, biking roads or trails, hiking to waterfalls or boreal forests, a picnic lunch or fine restaurant dining, a historic mine tour or a birding expedition, and so much more. To see a sky full of stars and even northern lights. To hear loons. To watch marathon runners who carry canoes or snowmobilers racing across open water or sports teams vying for state championships. To carve a statue out of snow. To buy a homemade rhubarb pie at the Farmers Market. To glide over the frozen lakes on a snowmobile or dogsled. To volunteer as a citizen scientist or food shelf helper or arts organizer. To shop for a home so you can live here full time.



Photo by Daniel Raza

Why come to Ely to live?

To find the home you want on the piece of land you've always dreamed of. To find or create the kind of work you find satisfying. To leave work and, in five minutes or less, get to a cool spot for your favorite recreational activity. To be close to excellent education from pre-school through community college and lifelong learning opportunities. To have a hospital, clinic, dentists, and assisted living facilities nearby. To join others pursuing hobbies and activities you already enjoy or want to try. To live someplace your friends and relatives want to visit. To find the church or spiritual group that feels like family. To be welcomed into a caring community.

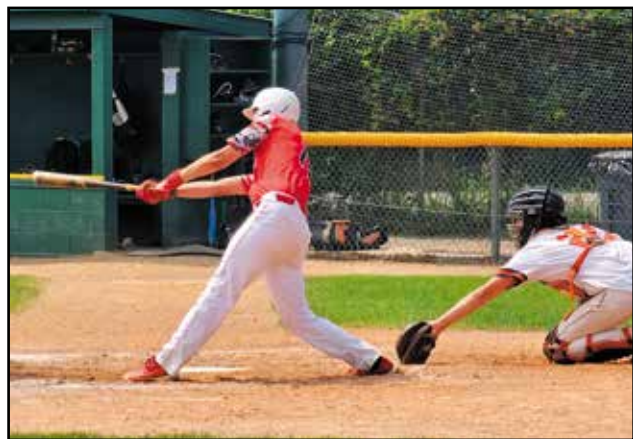


Photo by Diane Kromer

Why come to Ely for business?

To support creative entrepreneurs as they grow their businesses and add to Ely's economic well-being. To serve well-established public and private sector organizations including the U.S. Forest Service, county and state offices, medical facilities, schools and a college, museums, and other non-profits. To offer products to restaurants and retail stores. To market your business in Ely's two weekly newspapers and other media, through workshops and conferences, and by meeting with the many savvy business owners. And, not least of all, when the work day is done, to take advantage of the fishing right in town on Miners or Shagawa Lake.



Photo by Diane Kromer

Health Services

Ely is the location for the Ely-Bloomenson Community Hospital, which is currently expanding to become a regional health center. EBCH services include cutting-edge technology. Residents do not have to travel to 60 - 100 miles for special treatments and surgery.

We are also fortunate to have a full service clinic operated by Essentia Health. A team of general practitioners and nurse practitioners provide outpatient care.

Specialists from both Virginia and Duluth provide monthly visits to further expand services.

The Ely Behavioral Health Network provides support for both behavioral and mental health needs.

Northern Lights Clubhouse offers programs for adults with chronic mental health needs who desire reentry into the workforce.



Ely-Bloomenson Community Hospital

PH: 218-365-3271

www.ebch.org

Ely Behavioral Health Network

PH: 218-365-7980

www.elycct.org

Ely Veterans Affairs (VA) Clinic

PH: 218-365-0001

www.va.gov

Essentia Health Clinic

PH: 218-365-7900

www.essentiahealth.org

Northern Lights Club House

PH: 218-235-9539

www.elynlc.org

Let's Talk Numbers

Population

Ely	3390
Babbitt	1419
Winton	116
Embarrass	665
Tower	470
Soudan	378
St. Louis County (within 25 miles)	2526
Lake County - Fall Lake	560
Lake County - Stony River	230
Total Area Population	9754

Lodging Tax

Lodging tax is collected by resorts, motels, bed & breakfasts and other facilities providing stays less than 30 days. The current lodging tax collected is 3%.

<u>Year</u>	<u>Tax Collected</u>	<u>Approx. Revenue</u>
2021	\$205,257	\$6,841,893
2022	\$209,030	\$6,967,660
2023	\$205,281	\$6,842,693
2024	\$343,356	\$11,445,200*

*Reflects Lake County Lodging Tax dollars.

City of Ely Sales Tax

<u>Year</u>	<u>Gross Sales</u>	<u>Taxable Sales</u>	<u>Sales & Use Tax</u>
2019	\$126,699,954	\$48,191,236	\$3,490,709
2020	\$114,948,950	\$46,627,285	\$3,367,746
2021	\$131,490,507	\$57,780,490	\$4,120,116
2022	\$136,015,151	\$60,206,537	\$4,356,338
2023	\$129,621,731	\$61,407,871	\$4,422,863

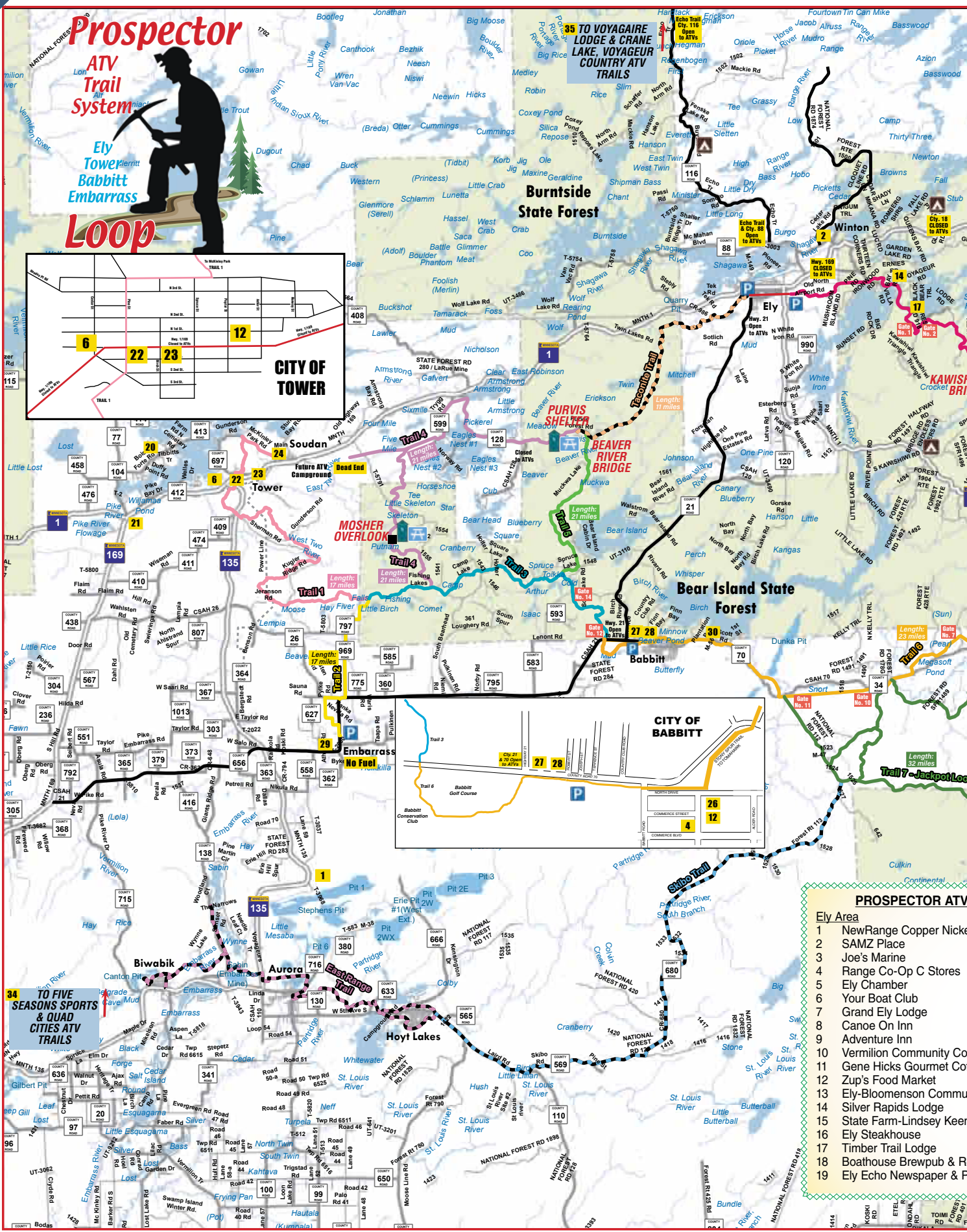
Current Sales & Use Tax – 7.35%

www.revenue.state.mn.us

BWCAW Permits

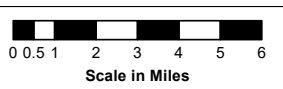
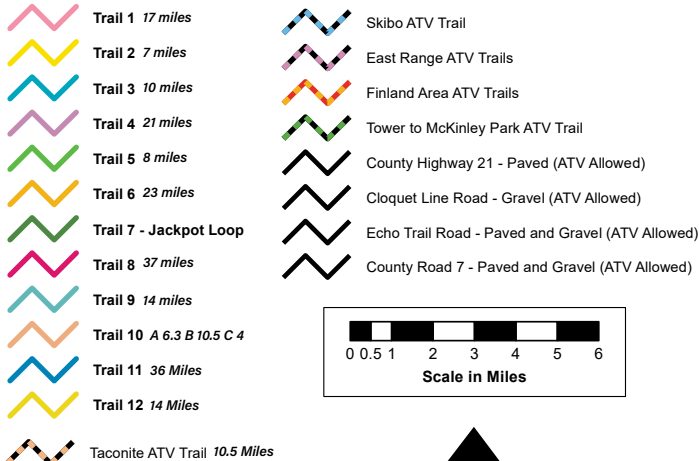
The Boundary Waters Canoe Area Wilderness provides a variety of day and overnight recreational experiences. Reservable permits include day use motor, overnight motor, overnight hiking and overnight paddle. Day use permits include paddle and hiking permits entering and exiting on the same day. Numbers shown represent all entry points for the BWCAW.

<u>Year</u>	<u>Reserved</u>	<u>Day Use</u>	<u>Total</u>
2018	25,631	15,162	40,763
2019	25,278	14,908	40,186
2020	31,548	17,660	49,208
2021	30,064	17,402	47,466
2022	26,526	16,388	42,914
2023	26,251	15,008	41,259
2024	26,204	15,886	42,090



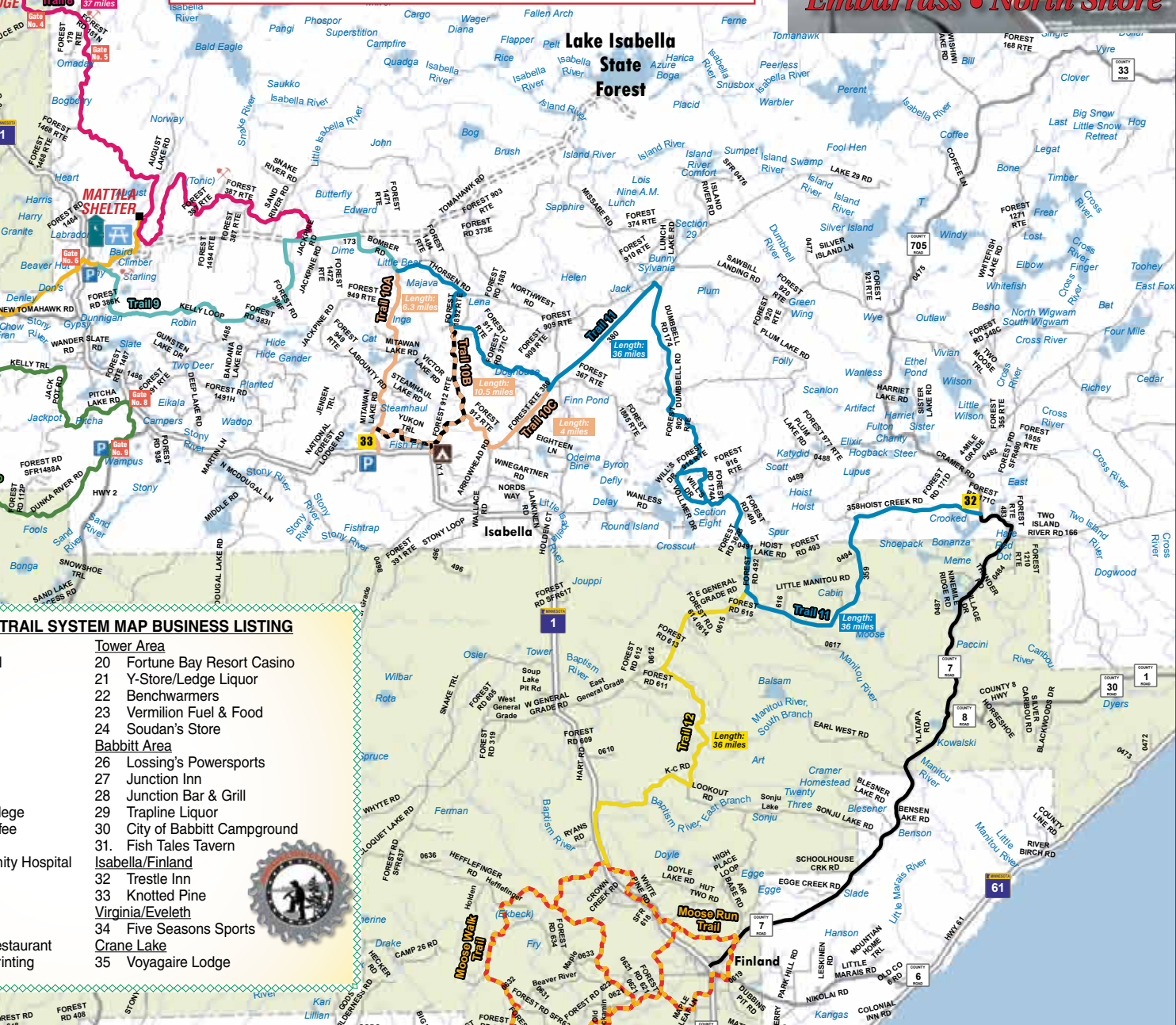
- ### PROSPECTOR ATV
- Ely Area
- 1 NewRange Copper Nickel
 - 2 SAMZ Place
 - 3 Joe's Marine
 - 4 Range Co-Op C Stores
 - 5 Ely Chamber
 - 6 Your Boat Club
 - 7 Grand Ely Lodge
 - 8 Canoe On Inn
 - 9 Adventure Inn
 - 10 Vermilion Community Coll
 - 11 Gene Hicks Gourmet Coff
 - 12 Zup's Food Market
 - 13 Ely-Bloomenson Commu
 - 14 Silver Rapids Lodge
 - 15 State Farm-Lindsey Keen
 - 16 Ely Steakhouse
 - 17 Timber Trail Lodge
 - 18 Boathouse Brewpub & Re
 - 19 Ely Echo Newspaper & Pr

Prospector ATV Trail System Map Key



Prospector ATV Trail System Map

*Ely • Tower • Babbitt
Embarrass • North Shore*



TRAIL SYSTEM MAP BUSINESS LISTING

Tower Area

- 20 Fortune Bay Resort Casino
- 21 Y-Store/Ledge Liquor
- 22 Benchwarmers
- 23 Vermilion Fuel & Food
- 24 Soudan's Store

Babbitt Area

- 26 Lossing's Powersports
- 27 Junction Inn
- 28 Junction Bar & Grill
- 29 Trapline Liquor
- 30 City of Babbitt Campground
- 31 Fish Tales Tavern

Isabella/Finland

- 32 Trestle Inn
- 33 Knotted Pine
- 34 Virginia/Eveleth
- 35 Five Seasons Sports
- Crane Lake
- Voyagaire Lodge

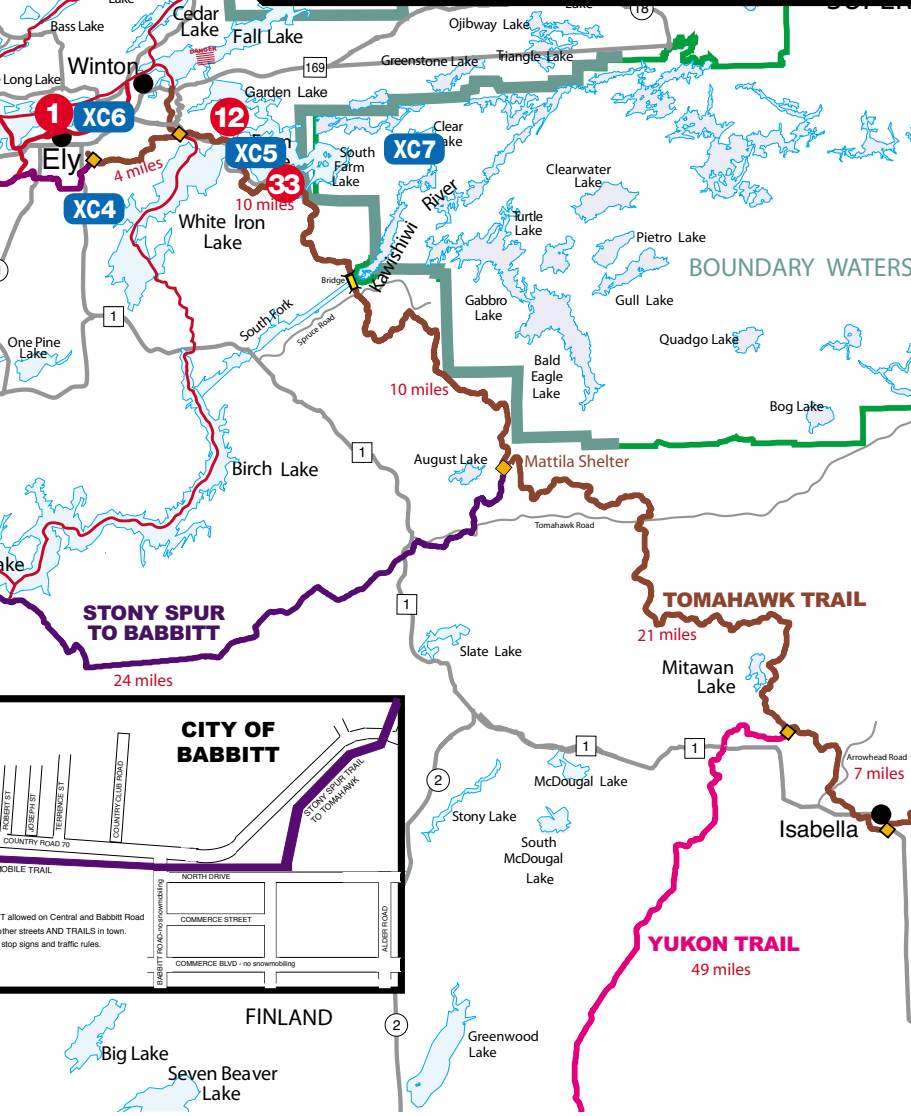




ILE
P

FOREST

High Lake
Low Lake
Bass Lake
Cedar Lake
Fall Lake
Long Lake
Winton
Ely
XC6
XC5
XC4
XC7
XC3
XC2
XC1
XC8
XC9
XC10
XC11
XC12
XC13
XC14
XC15
XC16
XC17
XC18
XC19
XC20
XC21
XC22
XC23
XC24
XC25
XC26
XC27
XC28
XC29
XC30
XC31
XC32
XC33
XC34
XC35
XC36
XC37
XC38
XC39
XC40
XC41
XC42
XC43
XC44
XC45
XC46
XC47
XC48
XC49
XC50
XC51
XC52
XC53
XC54
XC55
XC56
XC57
XC58
XC59
XC60
XC61
XC62
XC63
XC64
XC65
XC66
XC67
XC68
XC69
XC70
XC71
XC72
XC73
XC74
XC75
XC76
XC77
XC78
XC79
XC80
XC81
XC82
XC83
XC84
XC85
XC86
XC87
XC88
XC89
XC90
XC91
XC92
XC93
XC94
XC95
XC96
XC97
XC98
XC99
XC100





Ely Chamber of Commerce
Visitor & Information Center
P.O. Box 357
15 S. 4th Avenue W.
Ely, MN 55731
218-365-6123
ExperienceEly.com

THE LAST GREAT PURE EXPERIENCE.

Life is about jumping out of what's normal into an adventure that makes us feel new again - that's what draws people to Ely, Minnesota. This outdoor recreation paradise sits in one of the most beautiful places in North America - the unspoiled forests and lakes of the Superior National Forest and Boundary Waters Canoe Area Wilderness. This small town and its wilderness surroundings beckon outdoor enthusiasts, entrepreneurs, artists and photographers, wildlife lovers and history buffs to explore and enjoy this beautiful north woods place.

Start planning your next great adventure...
it all starts at **ExperienceEly.com**



Photo by Jayne Bohner

