



13 Shore Lunch

Painted on what was the Mantel House Restaurant, and facing Zup's Market parking lot, on 3rd and E. Sheridan. This mural features Boundary Waters Canoe Area Wilderness campers sharing lunch, which depicts the camaraderie experienced by canoers. Completed in 2001 by Bob Cary. Funded by the Mantel House Restaurant and is a part of Ely Greenstone Public Art.



14 Mad Hatter's Tea Party - Ely Style

On Bonnie Nissen's garage behind the Front Porch Coffee & Tea Co. located on 4th and E. Sheridan. This playful mural was inspired by a combination of Alice in Wonderland, the community feel of the Front Porch Coffee and Tea Co. and Ely's native woodland creatures. Completed 2008 by Nancy Scheibe. Funded by the Front Porch Coffee and Tea Co. and Donald G. Gardner Humanities Trust.



15 Dancing Bears

Located on the Front Porch Coffee & Tea Co.'s garage. This mural was painted to resemble a door where one had been removed. Appreciation of William Beard's paintings of dancing bears inspired the painting in the window. Completed 2014 by Nancy Scheibe. Funded by the Front Porch Coffee & Tea Co.

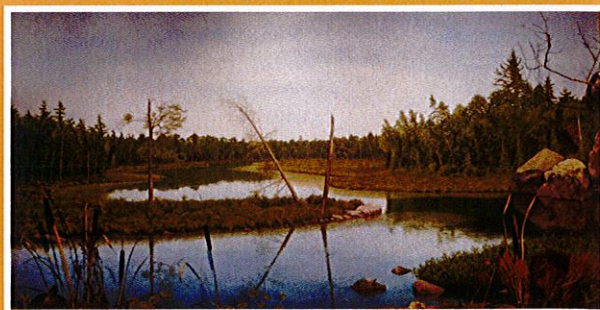


16 Images Of Italy (Indoor)

Adorning the walls of Sir G's Italian Restaurant on 5th and E. Sheridan, are several images of Italy. You get a feeling of being in Italy when surrounded by them. Completed in 2001 by Laura Ahola Young. Funded by Sir G's Italian Restaurant.

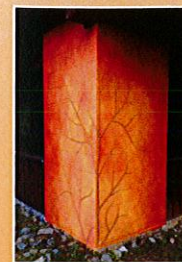
17 Summer Blueberries

Located on a propane tank on the property of Grand Ely Lodge off Pioneer Road on North Side of Miner's Lake. This mural features images of luscious wild blueberries found in the Ely area. Completed 2001 by Sharon Anderson. Funded by Grand Ely Lodge and is a part of Ely Greenstone Public Art.



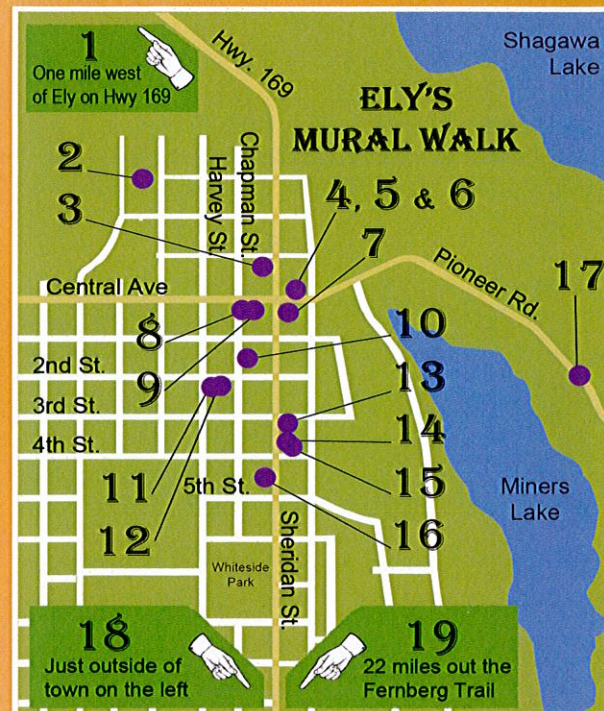
18 Beaver Dam River

Painted on a wall in the Forest Service building, just east of Ely on 169, is a mural that depicts a typical Boundary Waters Canoe Area Wilderness river scene. It is part of the aquatic ecology display. Completed in 2007 by Scott Brennan. Funded by Curtis John Verland and U.S.D.A. Forest Service Kawishiwi Ranger District.



19 Tofte Muse

Painted on the road side building of Tofte Lake Center At Norm's Fish Camp on the Fernberg Trail. The building's serene surroundings guided the design. Completed 2014 by Nancy Scheibe. Funded by Tofte Lake Center and Donald G. Gardner Humanities Trust.



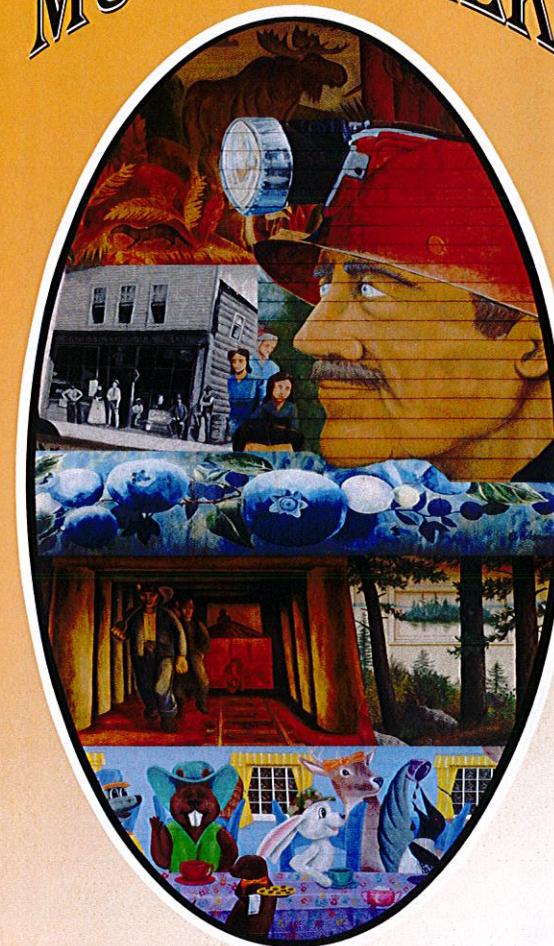
Tax deductible donations for future murals or for the upkeep of murals are welcome!

Send to: Ely Mural Walk Project
c/o Northern Lakes Arts Association
1900 E. Camp Street
Ely, Minnesota 55731

Brochure printed by Nancy Scheibe's company Creative Journeys to support the Arts in Ely and the Ely Chamber of Commerce to support tourism.

Every effort was made for accuracy. If you have corrections for the next printing please email them to Nancy@NancyScheibe.com

ELY MURAL WALK



An Artistic Journey
Through Ely's
History and Treasures

10 Artists, 19+ Murals
Work Spanning from 1939 to Present

ELY'S MURAL WALK

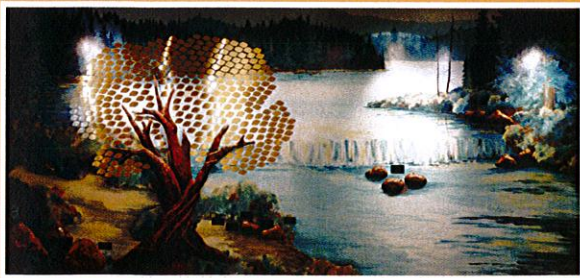
From East to West

Ely is home to many indoor and outdoor murals by local artists. They are a fascinating walk through Ely's history and natural charm as seen through the eyes of its artists.



1 Cub Room Murals (Indoor)

One mile west of Ely on Highway 169 are three murals in the North American Bear Center. Two depict bear cubs in their natural environment. The third is a backdrop for a new four season display in the Northwoods Ecology Hall, which also features taxidermied animals shown in their natural environment. Completed in 2007 and 2015, respectively, by Maureen O'Brien. Funded by the North American Bear Center.



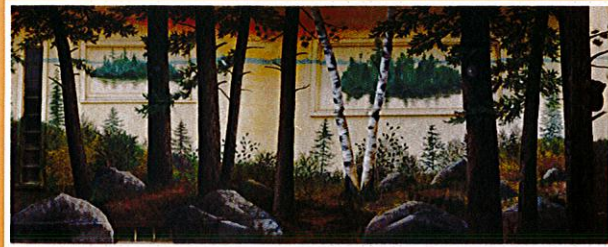
2 Donor Wall (Indoor)

In the hall leading to Ely Bloomenson Hospital, from Essentia Health - Ely Clinic, on 3rd and W. Conan is a mural that was inspired by a photo the artist took of a waterfall along the Fernberg trail east of Ely. The tree displays names of hospital financial supporters. Completed in 2002 by Sharon Anderson. Funded by Ely Bloomenson Hospital and is a part of Ely Greenstone Public Art.



3 Seasons Of Splendor

New in 2015, this mural hangs on the Jasper Company building on 1st and W. Sheridan. Facing west, the mural depicts the splendor of the seasons in Ely and each season's gifts of activities and woodland creatures. Completed in the summer of 2015 by Nancy Scheibe. Funded by Jasper Company.



4 Sunset Reflection Across the Water

Painted on the Ely Surplus building on Central and Sheridan. Facing east, this mural features a lake scene. Look for the birds peaking from their holes and the bear cub around the corner. Completed in 2005 by Maureen O'Brien. Funded by Ely Surplus and Mealey's.

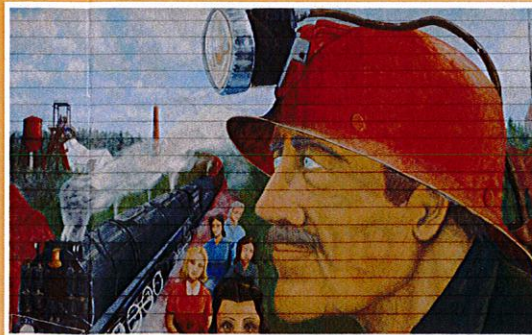


5 & 6 Not Pictured (Indoor)

These two murals are nature scenes inside Ely Surplus. Completed in 2005 by Maureen O'Brien. Funded by Ely Surplus and Mealey's.

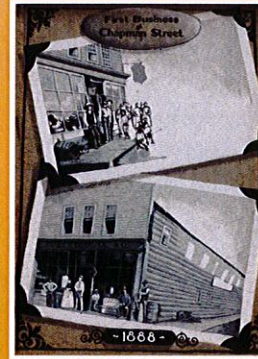
7 The End Of An Era

The Conoco Station on Central and Sheridan features a mural with a mining theme inspired by Ely's proud mining history. Completed in 2000 by William E. Defenbaugh. Funded by Phil's Conoco, Donald G. Gardner Humanities Trust, Valspar Corporation and is a part of Ely Greenstone Public Art.



9 First Businesses Chapman Street

This work in progress is painted on the Central avenue side of Klun Law Firm on Chapman St. The mural features two images of James R. Cormack & Co. - one of Ely's original mercantiles. The mural will be completed in the summer of 2015, by Kara Polyner. Funded by Klun Law Firm.



8 Fishing By Canoe

Displayed on the back side of Klun Law Firm. This mural features a favorite pastime of Elyites and visitors alike, fishing from a canoe in the Boundary Waters Area Canoe Wilderness. The artist, with the assistance of Joe Silega, Ely's renowned canoe builder, depicted one of his canoes - a Chestnut Prospector. Completed in 2004 by Ellen Remie Sauer. Funded by Klun Law Firm and part of Ely Greenstone Public Art.

10 WINDIGO

Painted on a building adjacent to, and displayed in, the porch of WELY End of the Road Radio station, located on 1st and E. Chapman St. The mural portrays canoers passing pictographs, which could be considered some of the worlds oldest murals, in the Boundary Waters Canoe Area Wilderness. Completed in 2002 by Bob Cary. Funded by WELY End of the Road Radio.



11 Wilderness (Indoor)



12 Iron Ore Mines (Indoor)

Painted in the lobby of the Ely Post Office located on 2nd and E. Harvey. 11, *Wilderness*, features images of the native creatures found in the forest surrounding Ely. 12, *Iron Ore Mines*, features scenes of the proud miners experiences. Completed in 1939 and 1940 respectively, by Elsa Laubach Jemne, a prominent Minnesota artist of her time. She used a fresco technique/egg emulsion to complete the murals. A study for the mural *Iron Ore Mines*, done in tempera, is in the Smithsonian Institute. Murals were commissioned by the New Deal/WPA Art Project.