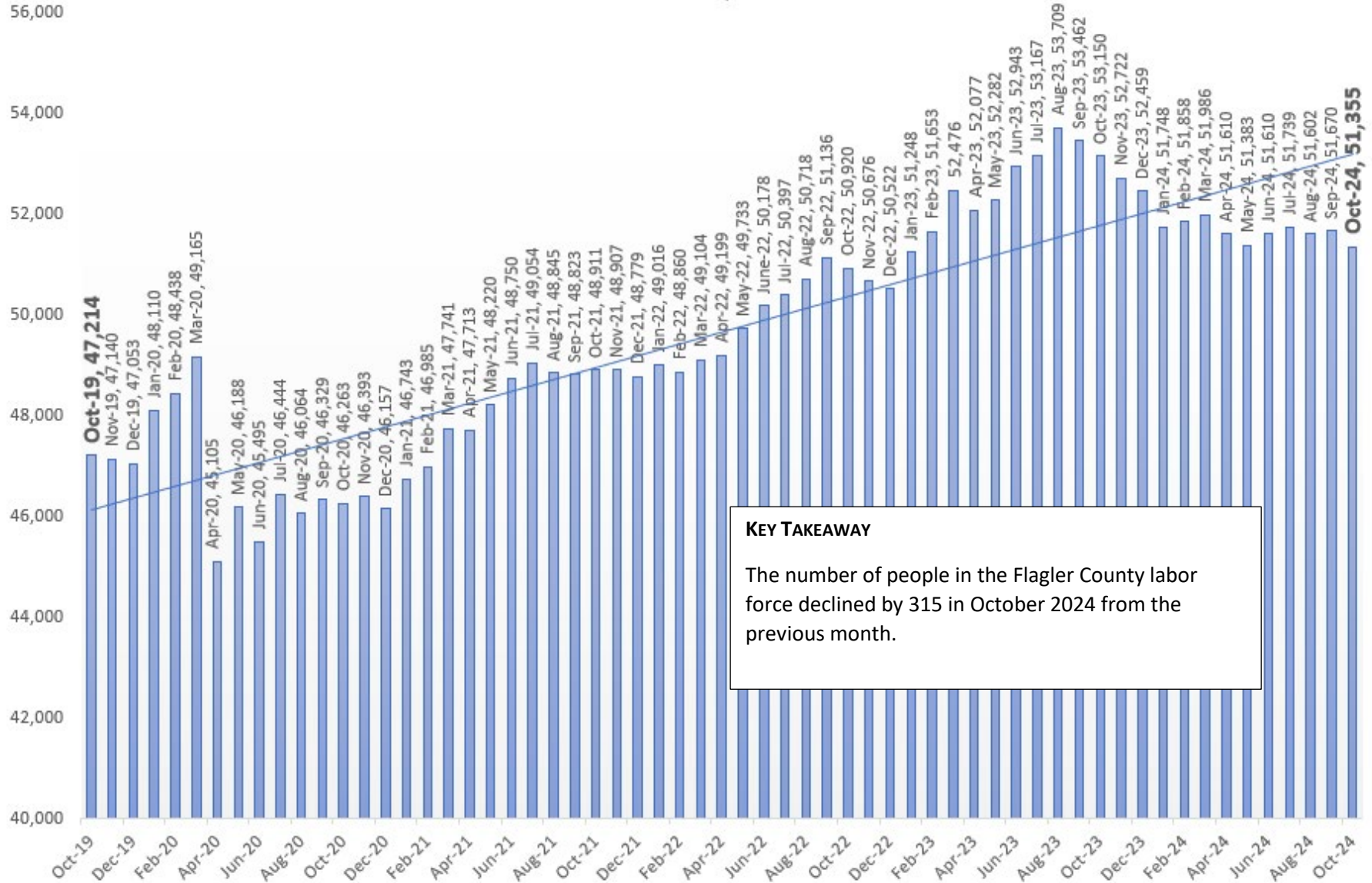


### LABOR FORCE RESIDING IN FLAGLER COUNTY

DATA SOURCE: U.S. DEPARTMENT OF LABOR, BUREAU OF LABOR STATISTICS, LOCAL AREA UNEMPLOYMENT STATISTIC PROGRAM IN COOPERATION WITH THE FLORIDA DEPARTMENT OF COMMERCE, BUREAU OF WORKFORCE STATISTICS

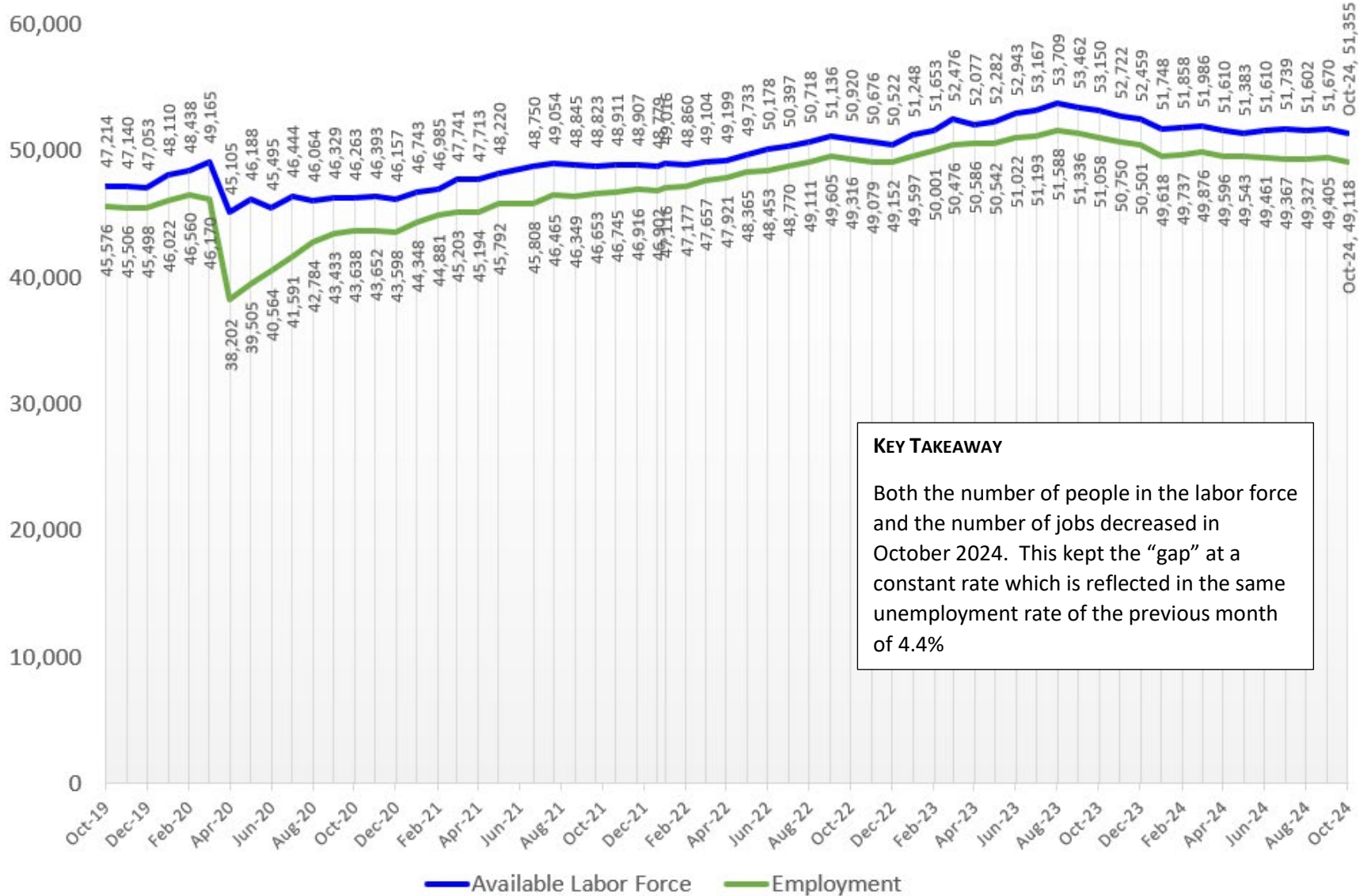


**KEY TAKEAWAY**

The number of people in the Flagler County labor force declined by 315 in October 2024 from the previous month.

FLAGLER COUNTY | AVAILABLE LABOR VS EMPLOYED FLAGLER COUNTY CITIZENS

Data Source: U.S. Department of Labor, Bureau of Labor Statistics, Local Area Unemployment Statistics Program

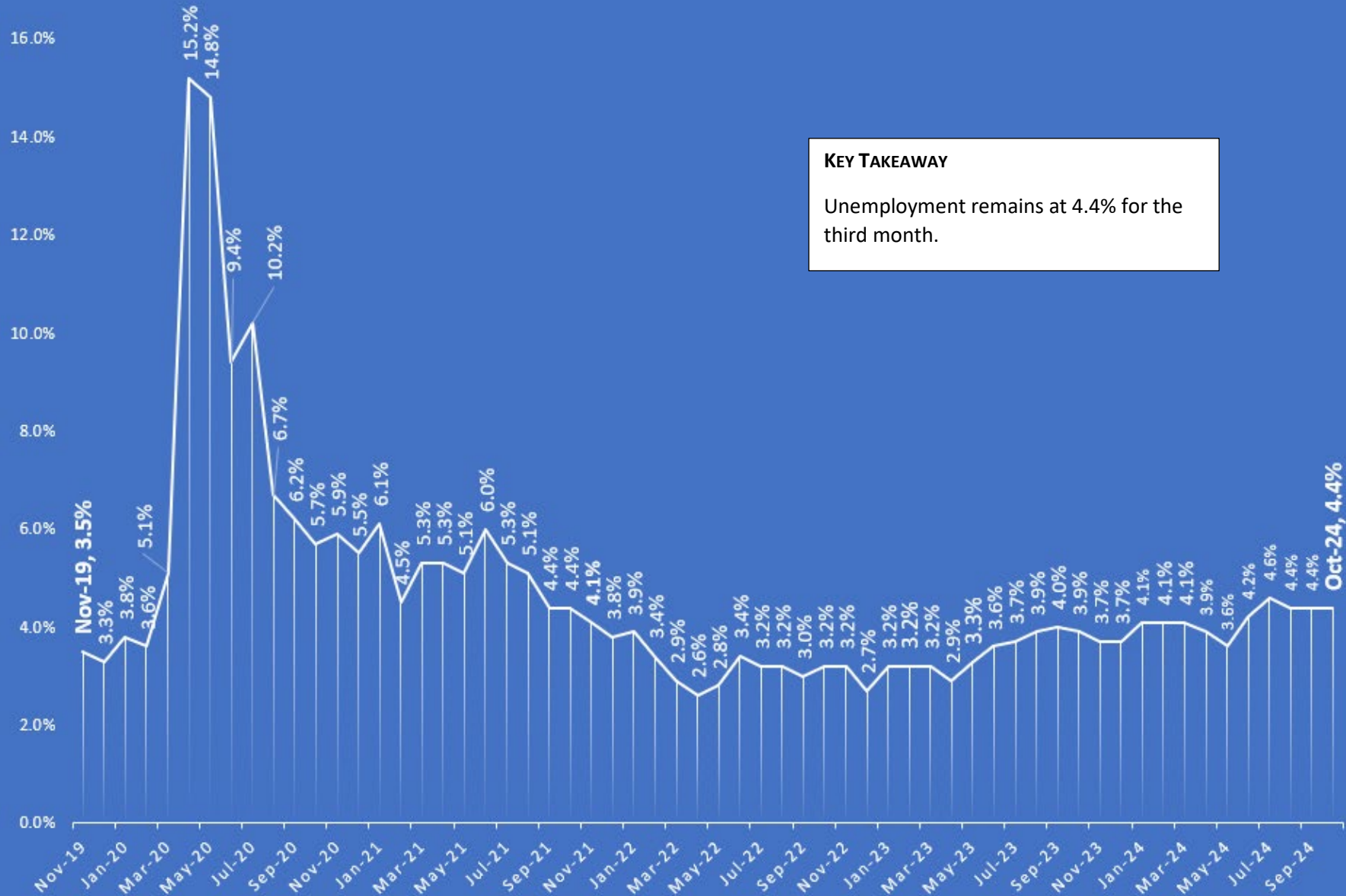


**KEY TAKEAWAY**

Both the number of people in the labor force and the number of jobs decreased in October 2024. This kept the “gap” at a constant rate which is reflected in the same unemployment rate of the previous month of 4.4%

## UNEMPLOYMENT TREND IN FLAGLER COUNTY | NOT SEASONALLY ADJUSTED

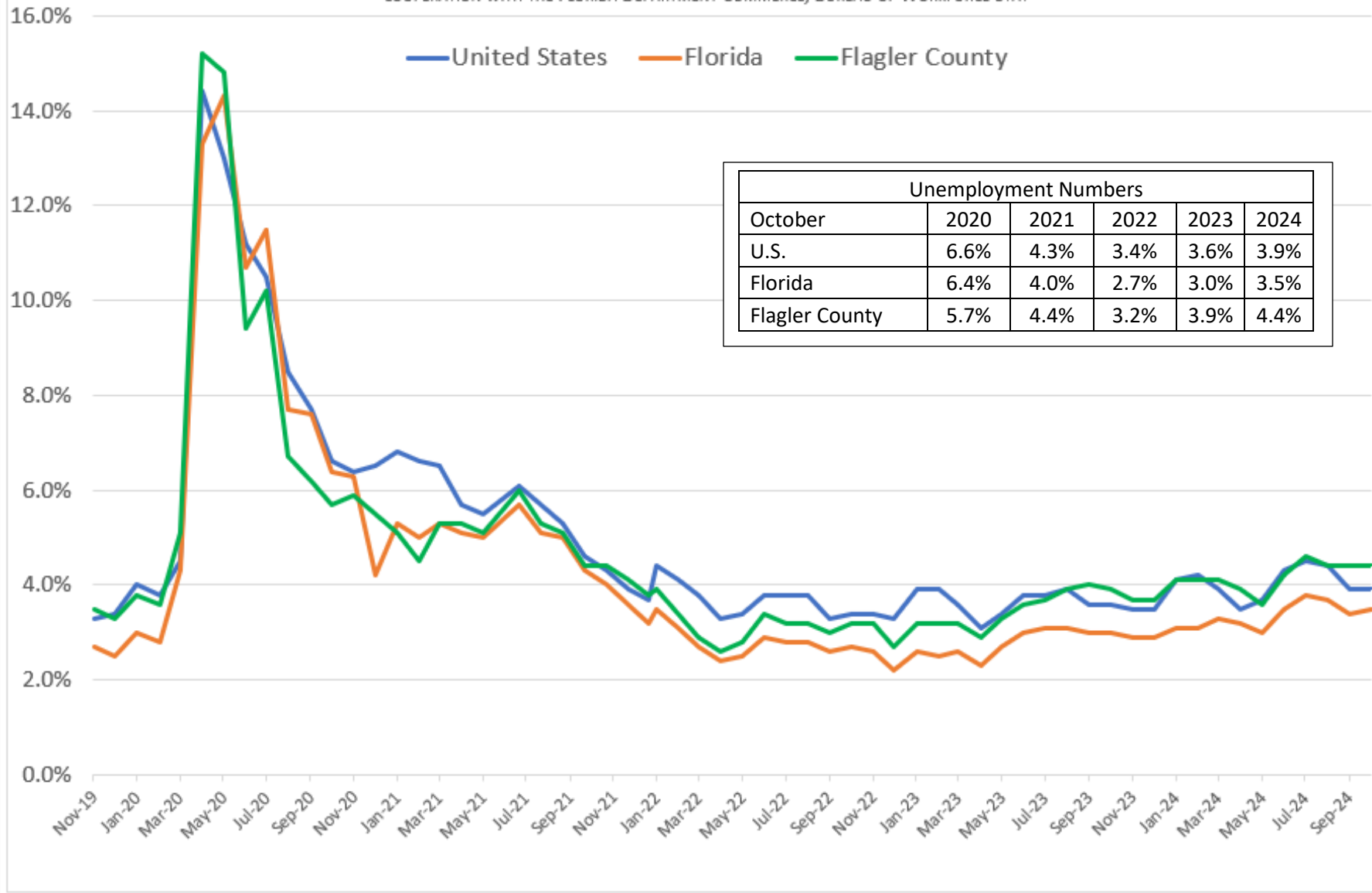
DATA SOURCE: FLORIDA DEPARTMENT OF COMMERCE, BUREAU OF WORKFORCE STATISTICS & ECONOMIC RESEARCH



**KEY TAKEAWAY**  
Unemployment remains at 4.4% for the third month.

### UNEMPLOYMENT TREND COMPARISON | NOT SEASONALLY ADJUSTED

DATA SOURCE: U.S. DEPARTMENT OF LABOR, BUREAU OF LABOR STATISTICS, LOCAL AREA UNEMPLOYMENT STATISTIC PROGRAM IN COOPERATION WITH THE FLORIDA DEPARTMENT OF COMMERCE, BUREAU OF WORKFORCE STAT



Unemployment Numbers					
October	2020	2021	2022	2023	2024
U.S.	6.6%	4.3%	3.4%	3.6%	3.9%
Florida	6.4%	4.0%	2.7%	3.0%	3.5%
Flagler County	5.7%	4.4%	3.2%	3.9%	4.4%

### FLAGLER COUNTY | POPULATION GROWTH

DATA SOURCE: US CENSUS BUREAU & BEBR-BUREAU OF ECONOMIC & BUSINESS RESEARCH, UNIVERSITY OF FLORIDA

Percentage Growth	
1990 - 2000	73.62%
2000 - 2010	92.04%
2010 - 2020	20.57%
2020 - 2023	13.32%

