



Fort Worth
STOCKYARDS
NATIONAL HISTORIC DISTRICT



MEET UP IN A PLACE WHERE THE WEST BEGINS

THE NATIONAL HISTORICAL
DISTRICT INVITES YOU TO EXPLORE
THE STOCKYARDS' EVENTS AND
SOCIAL GATHERING SPACES.



HOME TO

5
HOTELS

16
RESTAURANTS

13
BARS

17+
ATTRACTIONS

40+
RETAILERS

80+ 
BUSINESSES

IN THE STOCKYARDS DISTRICT

888 
EVENT DAYS

PER YEAR

#1 
ENTERTAINMENT DESTINATION

IN DALLAS / FORT WORTH

EVENT SPACES

FORT WORTH STOCKYARDS HAS OVER HALF A MILLION COMBINED SQUARE FOOTAGE OF EVENT SPACE

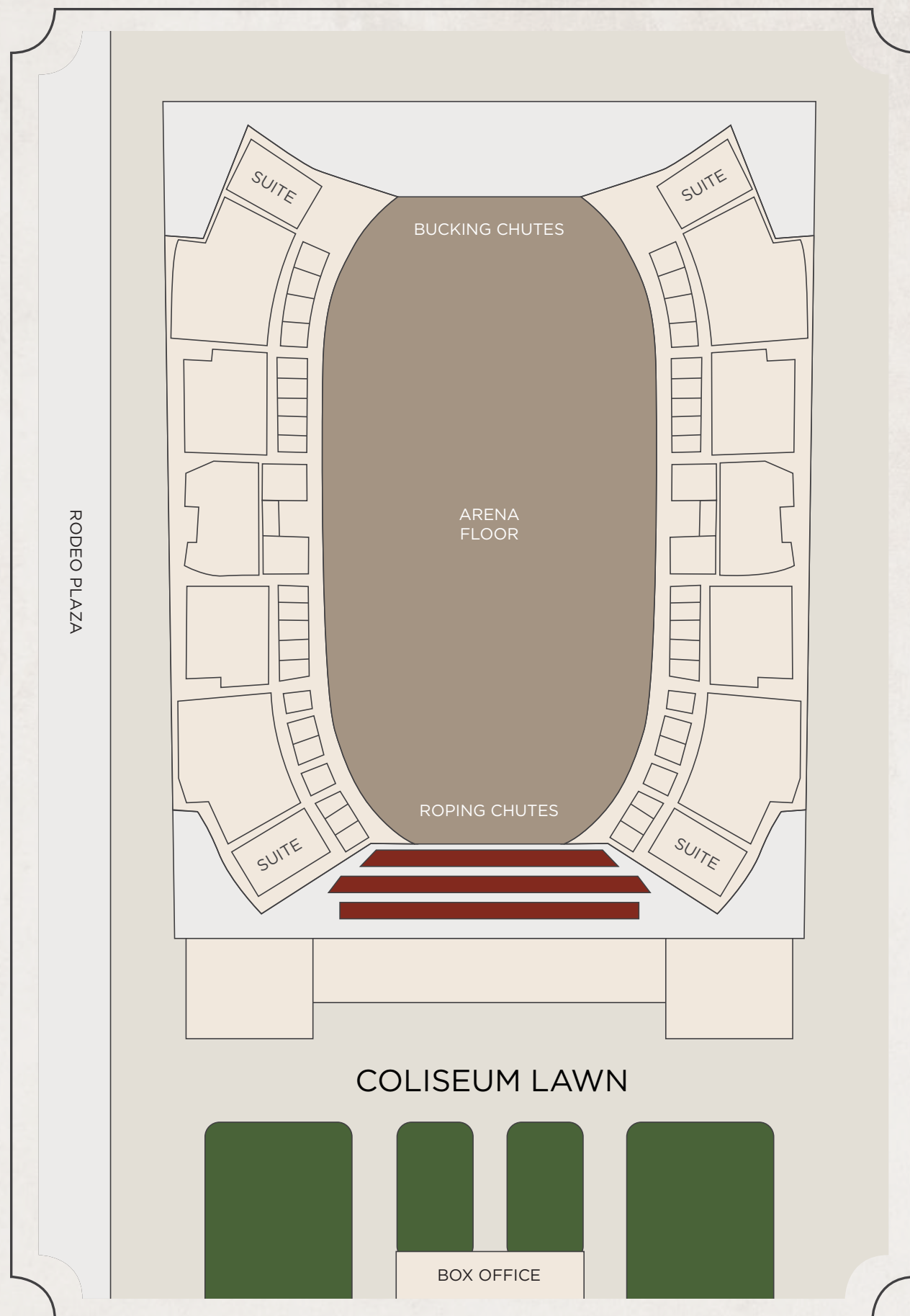
COWTOWN COLISEUM	16,000 SQUARE FEET
COWTOWN COLISEUM LAWN	8,450 SQUARE FEET
STOCKYARDS STATION	24,700 SQUARE FEET
HOTEL DROVER	11,000 SQUARE FEET
THE BARN & BACKYARD	7,100 SQUARE FEET
LEGACY HALL	3,200 SQUARE FEET
MULE ALLEY	12,000 SQUARE FEET
EXCHANGE AVENUE	73,000 SQUARE FEET
HYATT PLACE	1,300 SQUARE FEET
STOCKYARDS HOTEL	800 SQUARE FEET
LIVESTOCK EXCHANGE LAWN	18,000 SQUARE FEET
LOT #2	124,000 SQUARE FEET
RODEO PLAZA	68,000 SQUARE FEET
LOT #5	182,000 SQUARE FEET
LOT #6	126,000 SQUARE FEET



COWTOWN COLISEUM



COWTOWN COLISEUM HAS A LONG HISTORY
ROOTED IN RODEO AND WESTERN TRADITION AND
OFFERS CONTEMPORARY CONVENIENCES WHILE
MAINTAINING THE ELEGANCE OF A HISTORIC SITE.



COWTOWN COLISEUM - INTERIOR

ARENA

The famous Cowtown Coliseum is known for being home to the first indoor rodeo, but that's not all. With iconic concerts and events, Cowtown Coliseum ideal for large gatherings looking for a historic setting.

SUITES

Located at the top of the stadium seats on all four corners of the arena, Cowtown Coliseum offers private suite rentals for every event and can be combined with a VIP area for large groups. Catering is available, along with beverage packages.

VIP SEATS

With three rows perched above the roping chutes and a bar on the top row, this location has some of the best seats in the house. The perfect private viewing space with the "wow factor" you're looking for.

16,000 SQUARE FEET | 2,250 SEATS

CONCERT SEATING	800 FLOOR + 2,250 PERMANENT
TRADE SHOW DISPLAY	75-100 BOOTHS
PUBLIC ADDRESS	1,000 FLOOR + 2,250 PERMANENT
BANQUET	50 ROUND TOPS + 300 SEATS

COWTOWN COLISEUM - EXTERIOR

RODEO PLAZA

This historic path is covered by a canopy of live oak trees and includes roughly 68,000 square feet of functional space. The avenue is lit with strands of lights, which intertwine with the trees to create the perfect ambiance for your special event.

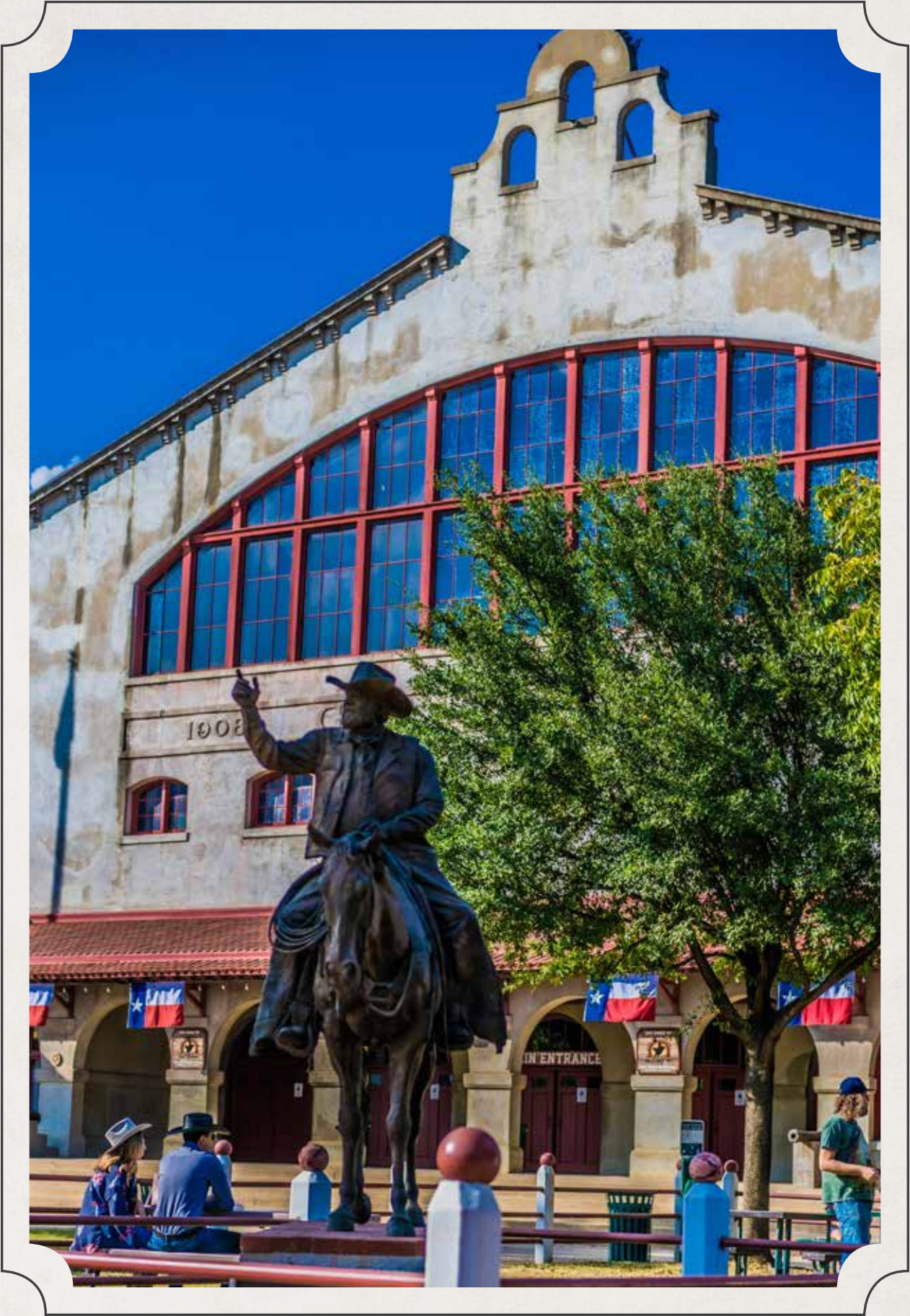
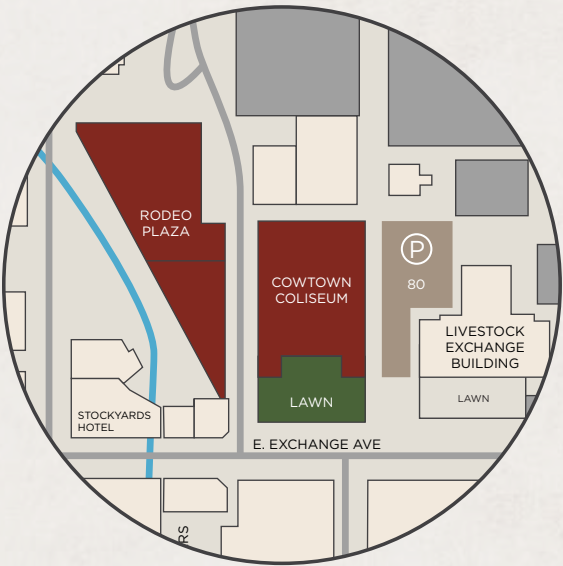
68,000 SQUARE FEET | CAPACITY: 6,700

COURTYARD/FRONT LAWNS

Our most visible space is located on the front lawn of the Coliseum, in the center of the historic Stockyards. With a total of 8,450 square feet of functional space, the front lawn is comprised of three sections.

8,450 SQUARE FEET | CAPACITY: 400

CENTER LAWN	1,250 SQUARE FEET 10 BOOTHS
WEST LAWN	3,600 SQUARE FEET 14 BOOTHS
EAST LAWN	3,600 SQUARE FEET 8 BOOTHS



STOCKYARDS STATION



HOME TO FOUR ELEGANT, WESTERN FLAIR SPACES NEAR
THE STOCKYARDS MANY ATTRACTIONS AND DINING AREAS.

STOCKYARDS STATION



LONE STAR ROOM

The Lone Star room creates an intimate atmosphere for any event, complete with air wall breakout capabilities for conferences.

2,700 SQUARE FEET | CAPACITY: 80



HERITAGE ROOM

The Heritage Room features brick flooring, high ceilings and a western design with a dance floor, stage and bar area.

5,000 SQUARE FEET | CAPACITY: 200



STOCKMAN'S CLUB

The Stockman's Club offers historic western ambiance featuring brick flooring, high ceilings, a dance floor, stage and bar area.

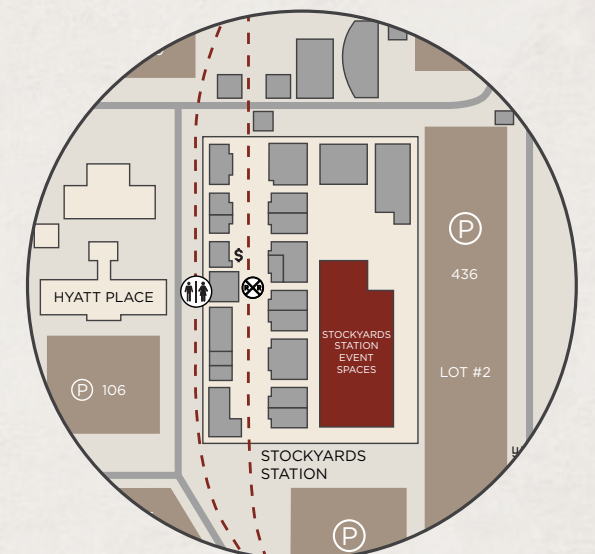
5,000 SQUARE FEET | CAPACITY: 200



STAMPEDE ROOM

The Stampede Room features a Texas-sized dance floor, stage and two bar areas with brick floors, high ceilings and wood finishes.

12,000 SQUARE FEET | CAPACITY: 600



A photograph of the Hotel Drover at dusk, featuring a large multi-story building with a prominent red neon sign on the roof that reads "HOTEL DROVER". The building has a mix of stone and light-colored siding, with balconies and numerous windows. In the foreground, there is a paved plaza and a small stone fountain. The sky is a deep orange and red from the setting sun.

HOTEL DROVER

AN AWARD-WINNING AUTOGRAPH COLLECTION®

HOTEL WITH 200 GUEST ROOMS, PROVIDES NEARLY
12,000 SQUARE FEET OF VERSATILE INDOOR AND
OUTDOOR MEETING AND EVENT SPACE.

HOTEL DROVER

THE BARN

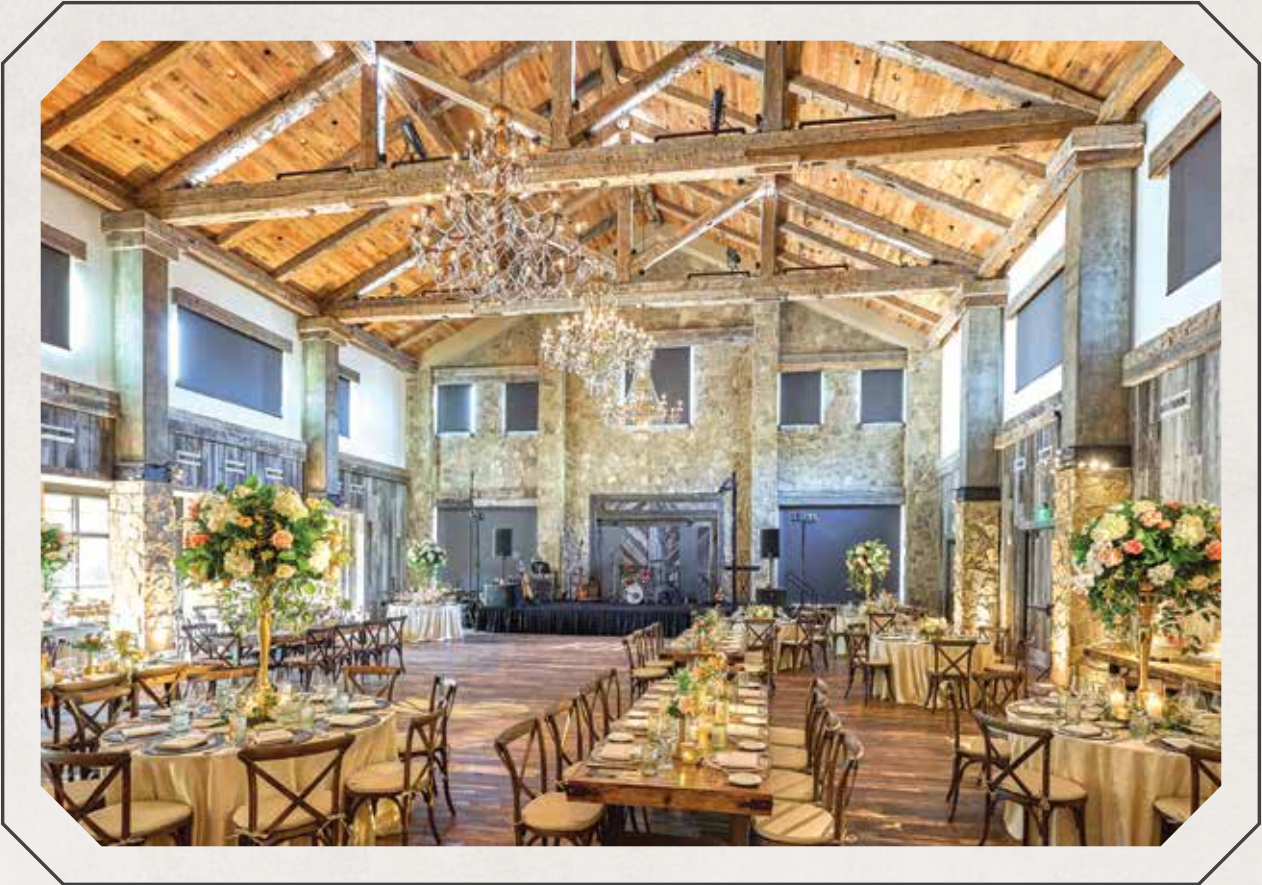
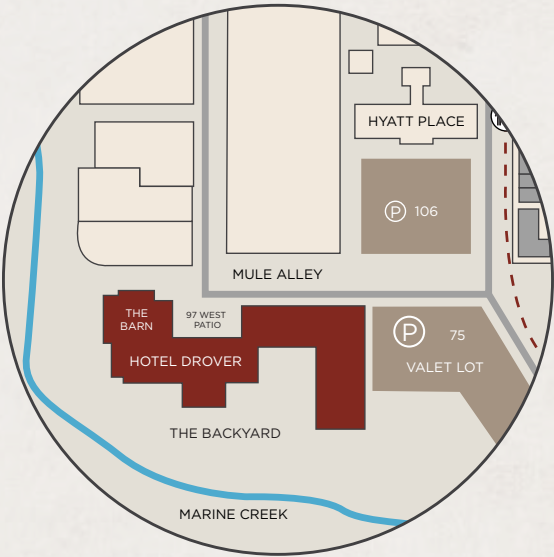
The Barn is a bright, inviting social space with high, vaulted ceilings and exposed 150-year-old reclaimed timbers. The indoor’s refined and rustic grandeur combines with the lushly landscaped outdoor space to create an unforgettable venue for your special event of up to 250 guests. When booking The Barn, you also gain access to The Barn Lawn, perfect for ceremonies and cocktail hours.

8,344 SQUARE FEET | TOTAL CAPACITY: 400

LEGACY HALL

From weddings and receptions to anniversary parties and galas, Legacy Hall is an elegant and tastefully detailed second-story event space. With an accompanying outdoor veranda, this space is perfectly suited for your event of up to 150 guests. Gain exclusive access to Legacy Balcony, which accommodates an additional 100 seated guests for extra event space.

3,200 SQUARE FEET | TOTAL CAPACITY: 240



A photograph of a Hyatt Place hotel building at night, illuminated by warm orange lights. The building has multiple stories with balconies and a central entrance. The text "HYATT PLACE" is overlaid in white serif font, with a small decorative icon below it.

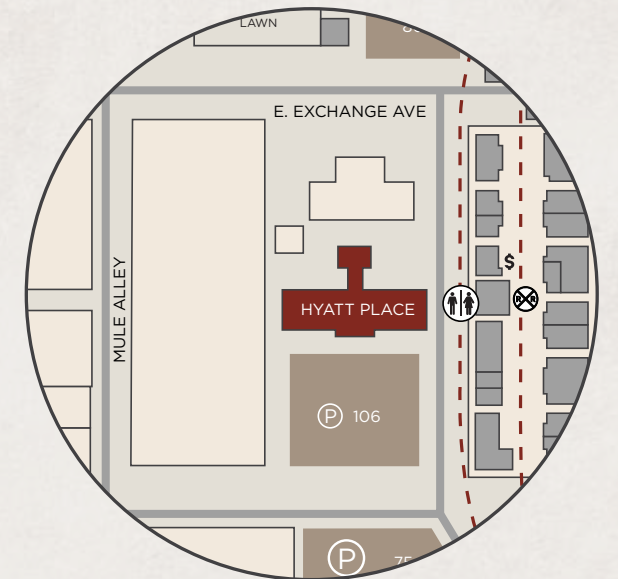
HYATT PLACE

STEPS AWAY FROM DOZENS OF RESTAURANTS,
FAMILY-FRIENDLY ATTRACTIONS, SHOPS AND LIVE
MUSIC VENUES IN THE HEART OF THE STOCKYARDS.

HYATT PLACE

Hyatt Place features 100 guest rooms, a pool, dining bar and 1,300 square feet of flexible event space. The space can be organized in a theatre-style or classroom arrangement and divided into two separate event rooms. Event room rentals include notepads, pens, water and an event room host. For larger meetings, Stockyards Station is located directly next door, offering event space with a Western motif authentic to the Historic Stockyards.

1,300 SQUARE FEET | 100 ROOMS & SUITES



STOCKYARDS HOTEL

EXPERIENCE A TIME WHEN CATTLE WERE COMMON
CURRENCY, OUTLAWS WERE FOLK HEROES AND A
SINGLE BOUTIQUE HOTEL WAS KNOWN AROUND THE
WORLD FOR TEXAS-STYLE HOSPITALITY AND COMFORT.

STOCKYARDS HOTEL

52 ROOMS AND SUITES 800 SQ FT OF MEETING SPACE

THE LONGHORN ROOM

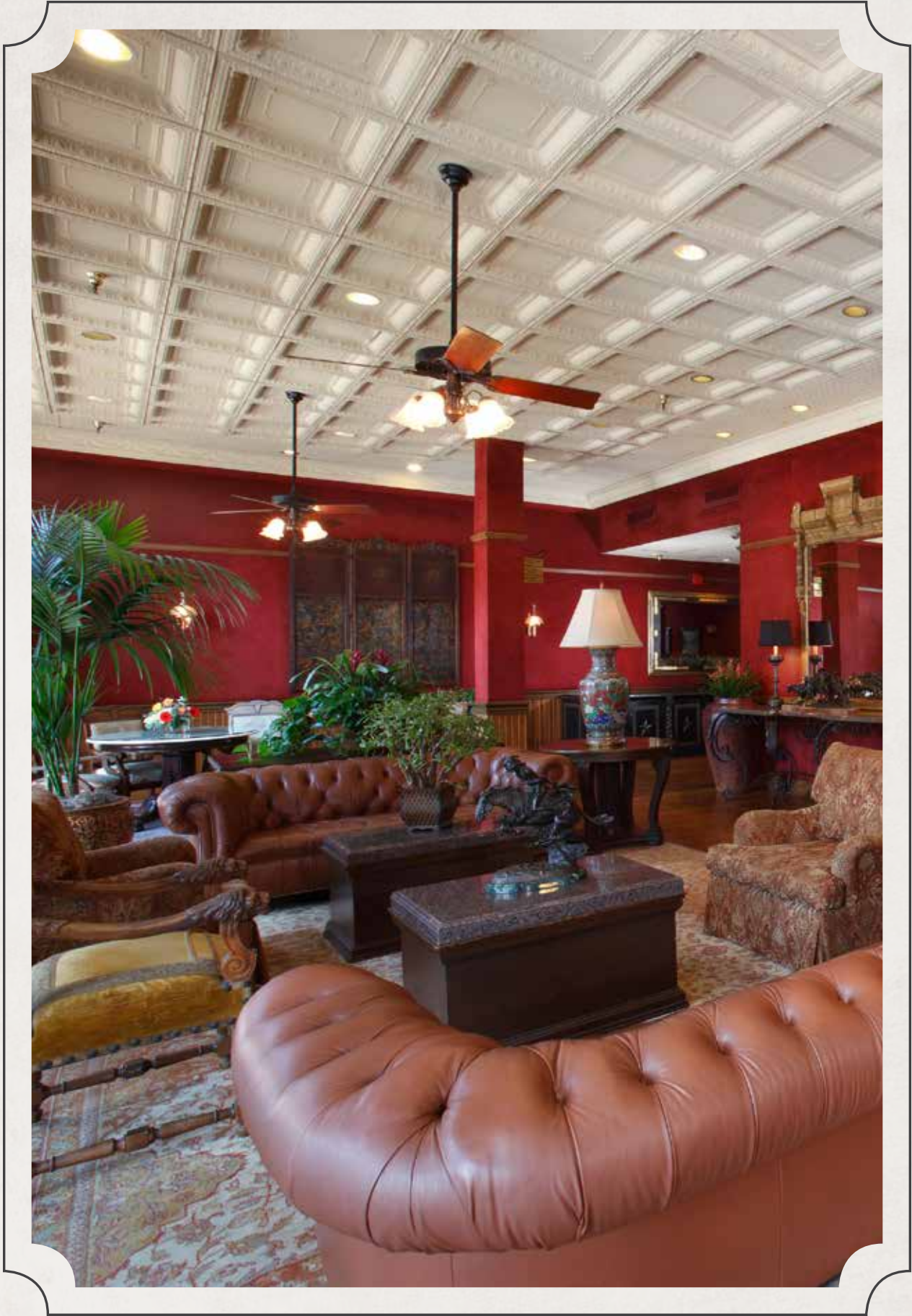
The Longhorn Room is inspired by Texas longhorns and cattle ranchers featuring stucco walls, Mexican wall sconce lighting and ceiling fans.

760 SQUARE FEET | CAPACITY: 90

THE QUANAH PARKER ROOM

The Quannah Parker Room takes inspiration from the famous Comanche Indian Chief with warm and inviting features and four large windows that overlook the indoor patio.

250 SQUARE FEET | CAPACITY: 20



STOCKYARDS HOTEL

THE CHISHOLM TRAIL ROOM

The Chisholm Trail Room is inviting with traditional Western décor, featuring a fireplace, twin antique wine cabinets and a vast Elkhorn chandelier.

480 SQUARE FEET | CAPACITY: 32

MARINE CREEK TERRACE

Marine Creek Terrace features two patios; the indoor patio overlooks the outdoor patio, which boasts views of Marine Creek framed with crepe myrtle trees blooming hot pink florals. The Marine Creek room is well shaded and lit with decorative lighting, making it perfect for more intimate events.

INDOOR PATIO

280 SQUARE FEET | CAPACITY: 45

ROUND TABLES

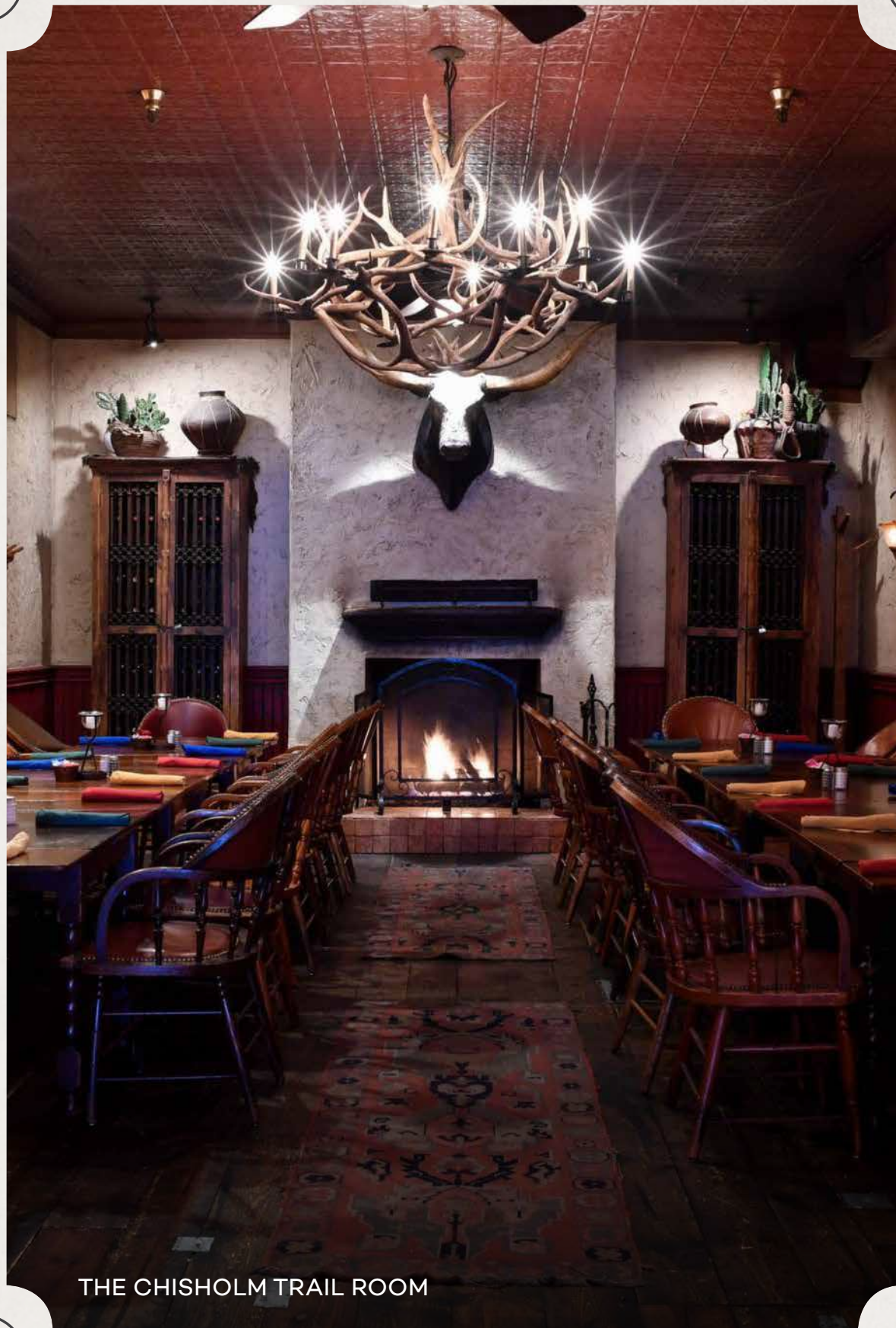
9

OUTDOOR PATIO

945 SQUARE FEET | CAPACITY: 200

ROUND TABLES

40



THE CHISHOLM TRAIL ROOM



Main & 26th - 27th

Stockyards Blvd

Clinton Ave

NW 26th St

Ellis Ave

NW 26th St

Stockyards
Transfer
Center

N Houston St

BR
287

Clinton Ave

Ellis Ave

NW 25th St

Rodeo Plz

Fort Worth
Livestock
Exchange Bldg

Stockyards Blvd

W Exchange Ave

Main &
Exchange - 24th

E Exchange Ave

Main &
Exchange

NW 24th St

Clinton Ave

Ellis Ave

N Houston St

Stockyards
Station

Mule Ally

Mule Ally St

Packers St

Niles City Blvd

NW 23rd St

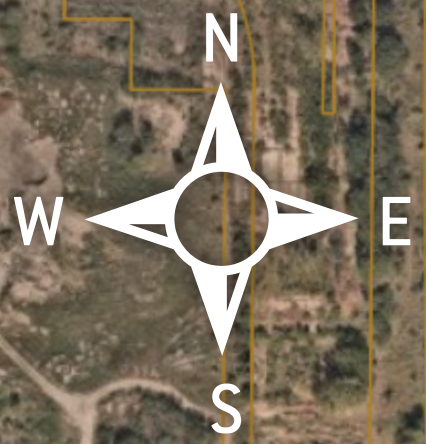
Main & 23rd

BR
287

NE 23rd St

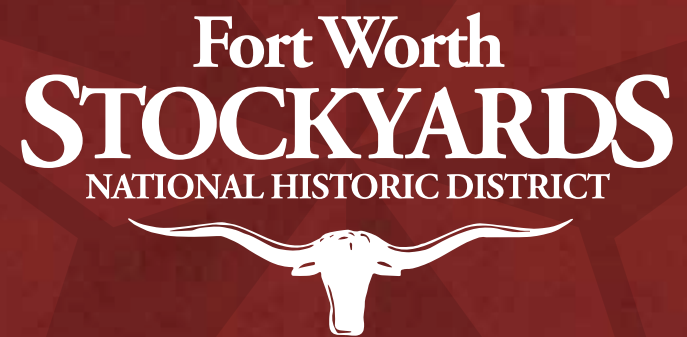
NE 23rd St

NE 23rd St



Fort Worth
STOCKYARDS
NATIONAL HISTORIC DISTRICT





ETHAN CARTWRIGHT

VICE PRESIDENT OF MARKETING

817.710.7384

ECARTWRIGHT@STOCKYARDSHERITAGE.COM

DENA NEWELL, CMD

DIRECTOR OF MARKETING & TOURISM

817.710.7357 | CELL: 214.676.5557

DNEWELL@STOCKYARDSHERITAGE.COM

KELLY TARTER

SALES & MARKETING MANAGER

817.625.1025

KELLY@COWTOWNCOLISEUM.COM

TIFFANY DIPASQUALE

EXECUTIVE DIRECTOR OF SALES & MARKETING

817.353.2646

TIFFANY@DIPASQUALE@HOTELDROVER.COM