

Fredericksburg®

THE TEXAS HILL COUNTRY

Attractions & Dining Guide



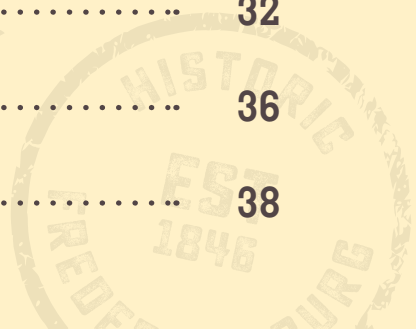
VisitFredericksburgTX.com

Willkommen to Fredericksburg!

Welcome to our little slice of German-Texan heaven. From the bottom of our Texas heart, we invite you to soak in all the flavors, flora and fun that is The Texas Hill Country. From wineries to wildflowers; history to honky-tonks; shopping to spas; and wide-open spaces to wide-open arms, you'll find a virtual cornucopia of activities and experiences for everyone—and it all comes with a serving of genuine Texan hospitality.

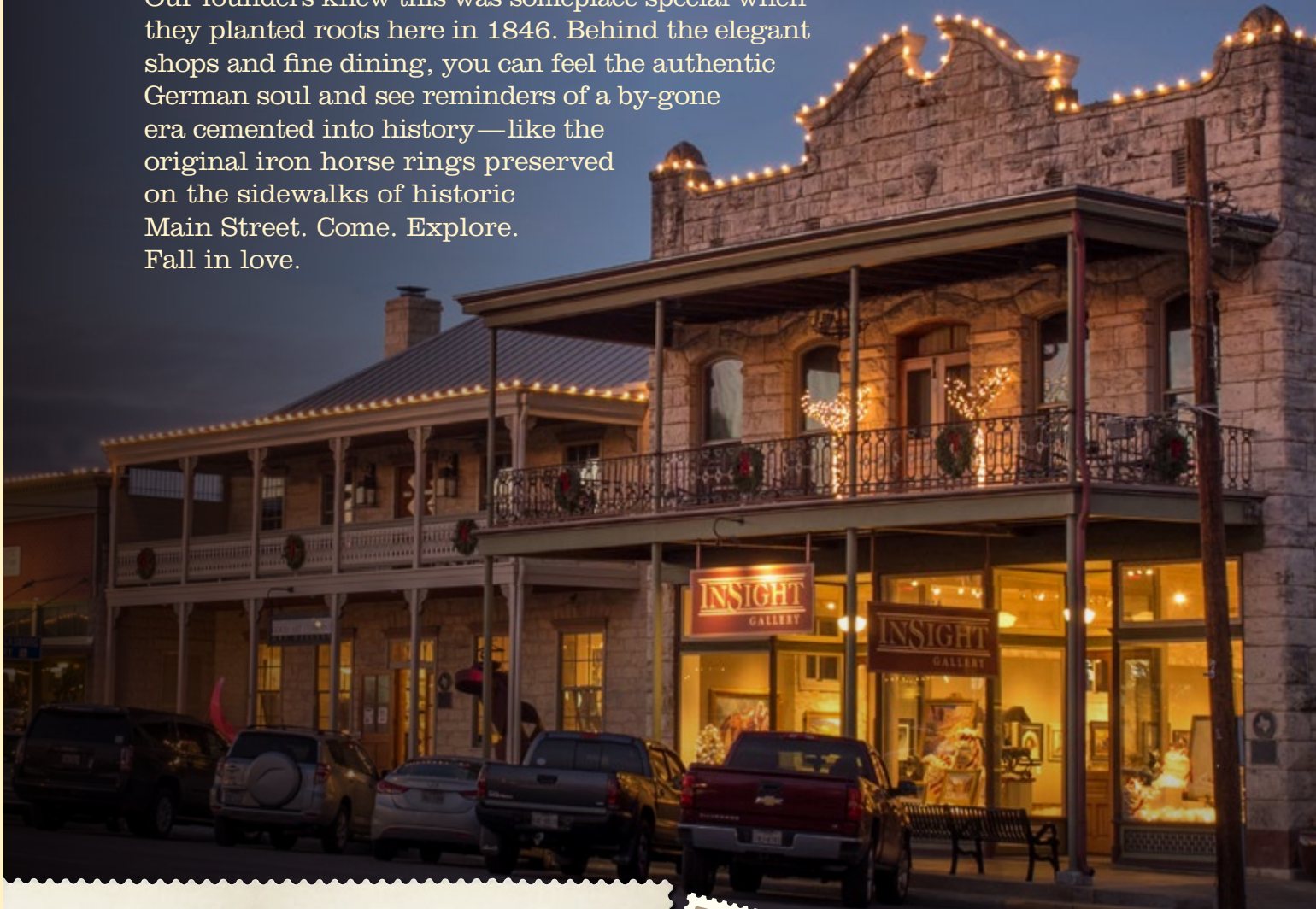


HISTORIC ATTRACTIONS	2
MORE THINGS TO DO	6
OUTDOOR RECREATION	8
SHOPPING HAVEN	12
VISUAL ARTS	14
PERFORMING ARTS	16
ALL THINGS EDIBLE	18
WINE, BREWS & SPIRITS	24
LODGING	28
FESTIVALS & EVENTS	30
HILL COUNTRY DAY TRIPS	32
VISITOR SERVICES	36
MAPS	38



AN ELEGANT COMBINATION OF history & sophistication

Our founders knew this was someplace special when they planted roots here in 1846. Behind the elegant shops and fine dining, you can feel the authentic German soul and see reminders of a by-gone era cemented into history—like the original iron horse rings preserved on the sidewalks of historic Main Street. Come. Explore. Fall in love.



One of the most iconic features of Fredericksburg is our historic Main Street. The mix of architectural styles, including original limestone and signature Basse block buildings dating back to the late 1800s, now house our many boutiques, art galleries, restaurants and tasting rooms.



historic attractions

"Among the Americans who served on Iwo Island, uncommon valor was a common virtue."

— Fleet Admiral Chester W. Nimitz

The First Iwo Flag

On June 22, 1945, the United States Marine Corps raised the American flag on Iwo Jima, a small island in the Pacific Ocean. This iconic photograph, taken by Joe Rosenthal, became one of the most famous images of World War II.



The National Museum of the Pacific War, located right on Main Street, is a world-class walk through history featuring interactive exhibits, gift shop and scheduled living history reenactments. It's so big, your ticket is good for 48 hours!



Learn more on page 5

EVERY VISIT COMES WITH A rich history lesson

You don't have to work very hard to step back into history here. From the moment you drive into town, you'll notice a sprinkling of historical markers and attractions, not to mention the eclectic architecture and original Main Street buildings. From the beginning, Fredericksburg has had a spirit of friendliness thanks to forward-thinking leaders who crafted a peace treaty with the Comanche, commemorated by a life-size bronze within our Marktplatz in the center of town (*a popular photo op, by the way*). You might also visit Fort Martin Scott—the first U.S. military post to be established on the western frontier of Texas, where early soldiers helped assure peaceful relations—and its neighbor the Texas Rangers Heritage Center.

Fast forward nearly 175 years, and today Fredericksburg and Gillespie County is a mecca of historical significance. Not only have our ancestors preserved structures and artifacts, but also the original aura of the German settlers and the warmth on which this town was built is evident in shops, attractions, restaurants and parks.

To really get a glimpse of what life was like for not only our great-great grandparents, but also lots of American settlers in the 1800s, head to The Pioneer Museum, three acres located on the West end of Fredericksburg's Main Street. This complex of original buildings features a home, blacksmith shop, one-room schoolhouse and a

Sunday House—the "in-town" accommodations farming families would have for when they traveled in for church on Sundays.

Want to see a real working early 1900s farmstead? The Sauer-Beckmann Living History Farm in Stonewall operates year round thanks to interpreters in period clothing who take care of the animals, work the garden, do the chores



▲ See LBJ's "Air Force One-Half" at Lyndon B. Johnson National Historical Park

and conduct tours for visitors. No electricity. No running water. No problem. As part of Lyndon B. Johnson State and National Historical Parks, this farm is a favorite for families — especially to see kids reflect on a life with no Internet.

While you're out there, no trip to this area would be complete without visiting the LBJ Ranch and the Texas White House—home of our 36th

President, Lyndon B. Johnson (currently closed for renovation). LBJ was a larger-than-life figure in this



▲ Kids can get a taste of chores in the 1800s at the Pioneer Museum Complex.

◀ And see a real working early 1900s farmstead at the Sauer-Beckmann Living History Farm at Lyndon B. Johnson State Park and Historic Site.

area during much of his life and especially during his presidency. His ranch home is a surreal walk through the 1960s complete with a “hotline” to Washington from his dining room table. See his vintage car collection and his airplane fondly called “Air Force One-Half.”

Back in town and right in the heart of the historic district is a must-do even for non-history buffs. The National Museum of the Pacific War—and its predecessor, the Admiral Nimitz Gallery, named after Fredericksburg native, Fleet Admiral

Chester W. Nimitz—is a state-of-the-art facility crafted with elegance and sophistication that pays homage to a war never to be forgotten.

Historically speaking, there’s so much to see. Visit St. Mary’s Catholic Churches, built in 1861 and 1908. Check out the Sunday Houses sprinkled throughout town (many now guesthouses) that stand as a reminder of our past. Get a walking map of our historic district or explore the Gillespie County Country School Driving Trail.

MUSEUMS AND HISTORIC SITES

B ALBERT, TEXAS ICE HOUSE AND DANCE HALL alberttexas.com

5435 S. Ranch Road 1623
(830) 644-2042

The Albert Dance Hall was built in 1922 by Max Beckman, and provided the community a place for Saturday night dances and social gatherings. It featured German brass bands rotating between the Luckenbach, Hye and Weinheimer Dance Halls of the time. Located just south of Highway 290, halfway between Fredericksburg and Johnson City, the tradition of community gatherings and dancing continues.

1 4 CEMETERIES

Fredericksburg has two main historic cemeteries located at the east and west ends of town. Der Stadt Friedhof, located at the 300 block of N. Lee Street, and the Catholic Cemetery, located on Catholic Cemetery Road, are both known for their striking granite markers and headstones, many in German.

2 CHRISTIAN METHODIST EPISCOPAL CHURCH

602 E. Main

Built in 1887 and formerly called “The Colored Methodist Episcopal Church,” this simple white frame structure, with its small steeple, sits atop a native limestone foundation and has been completely renovated in recent years.

C CROSS MOUNTAIN PARK

On North Milam just at the outskirts of town. Cross Mountain is located on a historic Marl and Limestone hill with an elevation of 1,951 ft. featuring beautiful views, walking trails, butterfly garden and picnic areas. It was used as an Indian lookout prior to early settlers. In 1847 during the settling of Fredericksburg a timber cross was found on the hilltop. Early Fredericksburg pioneers gave this hill the name “Kreuzberg” or Cross Mountain. In 1946 the permanent lighted cross was raised. Enjoy a walk to the top for the scenic overview.

F FORT MARTIN SCOTT HISTORIC SITE

fbgtx.org/416/Ft-Martin-Scott

1606 E. Main St.

(830) 307-8715

Take a self-guided walk at the site of a pre-Civil War (1848) military outpost to learn about one of the first frontier Army forts in Texas. A nature trail begins on the north side of the fort and winds along Baron’s Creek for about half a mile where you can see wildlife and wildflowers. Open Thurs–Mon 10AM to 5PM for self-guided tours (no docent on Thurs). Interpreted tours by appt \$5 per person minimum 2 people. No admission charge.

GILLESPIE COUNTY COUNTRY SCHOOLS DRIVING TRAIL

historicschools.org

View 12 historic country schools in Gillespie County. A special map with highlighted routes will direct visitors to schools in a particular quadrant of the county. Driving times on routes vary from one hour in length to half a day. Free maps of the trail are available at the Visitor Information Center at 302 East Austin Street in downtown Fredericksburg.

M LUCKENBACH TEXAS, INC.

luckenbachtexas.com

412 Luckenbach Loop, off RR 1376, 8 miles SE of Fredericksburg
(830) 997-3224

Established as a trading post in 1849, Luckenbach consists of a dancehall, general store and bar. This settlement has enjoyed continued notoriety for its free spirit and unique events. Live music can be heard most days in the bar or under the old oak trees. Hours: Monday–Saturday 10AM to 9PM; Sunday Noon to 9PM. Admission fee to some events.

K LYNDON B. JOHNSON NATIONAL HISTORICAL PARK

nps.gov/lyjo

LBJ Ranch District:

Hwy. 290 East, 16 miles (Stonewall)

(830) 868-7128

The National Park Service operates the LBJ Ranch and offers public access to the ranch, Texas White House, LBJ’s birthplace, Johnson family cemetery, old Junction School, LBJ’s grandparents’ home and ranch showbarn. For a free ranch driving permit, visit the LBJ State Park Visitor Center between 9AM and 4:30PM. Guided NPS ranger tours of LBJ’s office and home are offered from 10AM to 4:30PM for \$3 (currently closed for renovation).

Johnson City District:

Hwy. 290 East, 30 miles (Johnson City)

(830) 868-7128

Located in Johnson City, this National Historical Park offers a Visitor Center with exhibits and films on LBJ and Lady Bird, the Boyhood Home, an education building and the historic Johnson Settlement.

Hours: Visitor Center and Boyhood Home 9AM to 5PM daily; Johnson Settlement 9AM to sunset daily. No admission fee at Johnson City District.

NATIONAL HISTORIC DISTRICT HEART OF FREDERICKSBURG

Listed in the National Register of Historic Places, the district has more than 80 points of historic interest and significance in the district. Stroll past many of Fredericksburg’s famous structures and see the pride taken in both homes and businesses by the local residents. Free self-guided walking tour maps of the district are available at the Visitor Information Center at 302 East Austin Street in downtown Fredericksburg.

7 NATIONAL MUSEUM OF THE PACIFIC WAR

pacificwarmuseum.org

311 E. Austin St.

(830) 997-8600

Dedicated to all those who served in the Pacific War. The Admiral Nimitz Gallery, George Bush Gallery of the Pacific War, the Plaza of the Presidents, Japanese Garden of Peace, Memorial Walk and the Pacific Combat Zone are all part of the complex. See displays of some of the most notable aspects and events of WWII in the Pacific.

Hours: 9AM to 5PM. Open daily except Thanksgiving, Christmas Eve and Christmas Day.

Admission fee: \$18 adults; \$14 seniors; \$12 military w/ID;

\$8 kids 6+/students w/ID; 5 and under free.

11 PIONEER MUSEUM COMPLEX

pioneermuseum.net

325 W. Main St.

(830) 990-8441

Experience the rich German heritage of Gillespie County. This 3.5-acre museum complex contains superb examples of early German structures and artifacts. Prior arrangements required for special tours of other historic homes and sites owned by the Gillespie County Historical Society.

Hours: Mon–Sat, 10AM–5PM. Closed Sunday and major holidays.

Admission: \$7.50 for ages 18 and up, \$3 for students

6–17 years, 5 & under free.

K SAUER-BECKMANN LIVING HISTORY FARM

tpwd.texas.gov/state-parks/lyndon-b-johnson

Lyndon B. Johnson State Park and Historic Site

(830) 644-2455

Visit a living history farmstead of the pioneers. See how the farm families of a century ago lived. Learn about seasonal activities such as sausage making, sheep shearing, canning, etc. See state parks section for more information on the Lyndon B. Johnson State Park and Historic Site (page 11).

Hours: 10AM to 4PM September–May; 9AM to 3PM June–August.

Closed the last Tuesday of every month.

No admission fee.

P TEXAS RANGERS HERITAGE CENTER AT FORT MARTIN SCOTT

trhc.org

1618 E. Main St.

(830) 990-1192

Phase One is now open Thurs–Mon 9AM to 5PM and includes the Ranger Ring of Honor, the Open-Air Pavilion, the Amphitheater, the Campanili Bell Tower and a monumental bronze sculpture entitled “The Legend, The Lore, The Law.” Phase Two will include the Legacy Theater.

15 VEREINS KIRCHE MUSEUM

pioneermuseum.net/vereins-kirche.html

Center of Marktplatz, 100 W. Main St.

(830) 997-7832

This unique building is a well-known landmark of the city of Fredericksburg in the heart of town. Learn about the original “Society’s Church” and its interesting history.

Hours: Mon–Sat 10AM to 5PM. Closed Sundays.

Closed Thanksgiving Day and Christmas Day.

Admission: \$2.50 adults; \$1 students; age 5 and under free.

more things to do



YOUNG CHILDREN'S ACTIVITIES

- E** ENCHANTED ROCK STATE NATURAL AREA
- S** OLD FAIR PARK – PLAYGROUND, SKATE PARK, BASKETBALL PAVILION, ETC.
- L** LIVE OAK WILDERNESS TRAIL – LADY BIRD JOHNSON MUNICIPAL PARK
- M** MARKTPLATZ PLAYGROUND
- N** OLD TUNNEL STATE PARK (SEASONAL)
- M** PIONEER MUSEUM
- K** SAUER-BECKMANN LIVING HISTORY FARM – LYNDON B. JOHNSON STATE PARK AND HISTORIC SITE
- Q** WILDSEED FARMS



Pick up a Kids' Guide to Fredericksburg at our Visitor Information Center.

Wildseed Farms' sprawling grounds feature 200 acres of stunning seasonal wildflowers, plus a gift boutique and nursery with abundant plants and pottery.

Please confirm days and hours of operation before visiting.

ATTRACTIONS

A ALTSTADT BREWERY

altstadtbeer.com
6120 E. US Hwy 290
(830) 304-2337
An authentic Bavarian brewery dedicated to creating the purest, easy-drinking beers guided by the historic German Purity Law of 1516. Hours: Wed, Thurs & Sun Noon to 8PM; Fri and Sat Noon to 9PM. Free brewery tours daily at 12:15PM, 2PM and 4PM.

B BB'S BILLIARDS & BOWLING

758 S. Washington St.
(830) 997-2020
State-of-the-art bowling center, as well as game room, pool tables and full snack bar. Hours: League and open bowling
Hours: Mon–Thurs 11AM to 10PM; Fri–Sat 11AM to Midnight; Sun 1PM to 9PM. Call for prices.

D DAS PEACH HAUS

daspeachhaus.com
1406 S. US Highway 87
(830) 997-8969
Das Peach Haus was founded in 1969 on the grounds of the Wieser family orchards and had the first peach cooler in Gillespie County. The complex started with a restored 1870 log cabin and expanded in 1974 with the historic Lone Star Brewery warehouse. Beyond offering wonderful peaches in season, Das Peach Haus now serves as a showroom for hundreds of products gracing grocery shelves today. Hours: Daily 10AM to 5:30PM; Fri–Sat until 6PM. No admission fee.

D FISCHER & WIESER CULINARY ADVENTURE COOKING SCHOOL

jelly.com/culinary-adventure
1406 S. US Highway 87
(830) 997-8969
Each two to three hour class can range from a four-course meal to a deliciously sweet pastry class paired with wines from the Texas Hill Country. Customized classes for groups of 6 to 24 also available. For class schedule, menus and booking, see website.

FREDERICKSBURG ADVENTURE TOURS

fredadventuretours.com
(940) 435-1408
Come experience the history and culture of the Texas Hill Country as we show you all the places folks talk about, and a few y'all might not have heard of, while having an enjoyable and enlightening experience! Offering downtown and country excursions as well as seasonal events.

FREDERICKSBURG BREWING COMPANY

yourbrewery.com
245 E. Main St.
(830) 997-1646
Fresh ales and lagers brewed on-site in copper kettles and stored in stainless tanks. Also full-service restaurant, meeting facility and "bed & brew" rooms upstairs. Hours: Mon–Thurs 11:30AM to 9PM; Fri–Sat 11:30AM to 10PM; Sun 11:30AM to 7PM.

FREDERICKSBURG DOG PARK

fbgdogpark.org
360 Lady Bird Dr.
Providing shade, water, seating and plenty of room to run, wag and sniff to get sun, socialization and exercise for both canines and their owners. Open daily dawn until dusk. Limit two dogs per person.

FREDERICKSBURG FARMER'S MARKET

fredericksburgtxfarmersmarket.com
Fresh, locally-grown produce will be available for purchase. Summer Market: May through August, 4PM to 7PM at Marktplatz (W. Main St. and N. Adams)
Fall Market: October and November, 4PM to 6PM at the Pioneer Museum (325 W. Main St.)

FREDERICKSBURG HERB FARM

fredericksburgherbfarm.com
405 Whitney St.
(6 blocks from W. Main St.)
(830) 997-8615 or (800) 259-HERB
The Fredericksburg Herb Farm features a 5,000 sq. ft. spa facility (Nature's Spa), an expanded restaurant (The Farm Haus Bistro) and 14 cottages (The Sunday Haus Cottages). Hours: Gift Shop open daily 10AM to 3PM.

H FREDERICKSBURG TRADE DAYS

fbgtradedays.com
7 miles east on US Hwy. 290
(830) 990-4900 or (210) 846-4094
Over 450 vendors offering antiques, collectibles, tools, crafts, primitives, ranch furniture, clothing, jewelry and much more on the weekend of the third Saturday of every month. Hours: Weekend of the third Sat of every month, Fri–Sat 9AM to 6PM; Sun 9AM to 4PM. Parking fee: \$5 valid all weekend.

FREDERICKSBURG TROLLEY

fbgtours.com
(830) 998-8986
Experience the history, architecture, important sites, and beauty of Fredericksburg with our narrated tours. Offering trolley tours, charters and seasonal tours.

FRITZTOWN CINEMA

fritztowncinema.com
2254 S. US Hwy. 87
(830) 990-6919
Movie theater. Box office opens one hour before the first showtime. Closed Tues.

HAUNTED FREDERICKSBURG GHOST WALK

hauntedfredericksburg.com
(830) 383-3122
Bring your favorite adult beverage in a cup and an extra pair of underwear because this is going to scare the pants off of you! Every Fri and Sat at 8:30PM. Private tours available. \$20 per person. Book online.

HILL COUNTRY ESCAPE

hillcountryescapegame.com
162 Boos Lane
(830) 542-4094
A fun and immersive game for small groups of 2 to 10 people where you work together as a team and test your wits and skills to escape from a locked room. Escaping will require finding clues, solving puzzles, and teamwork. Open Mon–Thurs 1 to 8PM; Fri–Sat 1 to 9:30PM; Sun 1 to 5:30PM.

HOFFMAN HAUS COOKING SCHOOL

hoffmanhaus.com/culinary-experiences/cooking-school
608 E. Creek
(830) 997-6739
Offering a curated series of cooking classes and demos lead by distinguished guests from the culinary and wine world. Private classes and demos can be tailored to specific needs and group sizes. For class schedules, menus and booking, see website.

ONE QUILT PLACE

onequiltplace.com
648 Post Oak Rd.
(830) 990-4140
A destination quilt shop for the sewing enthusiast featuring a full-service quilt shop, a studio classroom and quaint lodging for those wishing to extend their stay. Hours: Mon–Fri 10AM to 5:30PM; Sat 10AM to 4PM. Closed Sunday.

OPA'S SMOKED MEATS

opassmokedmeats.com
410 S. Washington St.
(830) 997-3358
For over 50 years, Opa's Smoked Meats has offered the finest in smoked sausage, specialty meats and cheeses. Stop by to pick up a sandwich for your picnic in the park! Hours: Mon–Fri 8AM to 5:30PM; Sat 8AM to 4PM; Closed Sun. No admission fee.

PEDAL TOUR TEXAS

pedaltourtexas.com
(512) 953-9428
We operate the original pedal pub cycles that have been operating in Europe for over 17 years. Have a blast while safely seeing downtown Fredericksburg!

THE RIDGE MARKETPLACE

shopsattheridge.com
13439 S. Ranch Road 783
(830) 896-0420
Visit The Café, The Wild Flour Bakery and The Gardens at The Ridge. Great food and great people! Open Tues–Thurs 8AM to 8PM; Fri–Sat 8AM to 9PM; Sunday 9AM to 3PM. Closed Monday.

ROCKBOX THEATER

rockboxtheater.com
109 North Llano Street
(830) 997-ROCK (7625)
A truly unique experience in Fredericksburg offering changing, professional, variety live-music shows. Shows approximately two hours in length with an intermission. Please check the website for shows, times and pricing.

1 SIMULCAST RACING —THE RACE BARN

theracebarn.com
35 Fair Drive
(830) 997-4058
Located at the Gillespie County Fairgrounds on Highway 16 south of downtown, The Race Barn offers simulcast horse and dog racing and wagering from across the country on over 30 televisions, including two giant screens, in this climate-controlled facility. The Race Barn also offers a full bar and casual dining. Doors open Thurs–Sun at 11AM. Closed Mon–Wed.

0 STREET DREAMS

streetdreamstexas.com
7914 S. State Hwy 16
(830) 997-1950
Buying, selling and trading high-quality vintage automobiles – classics, street rods and muscle cars. There is no charge to view the current collection of automobiles. "We make your dream a reality!" Hours: Tues–Fri 9:30AM to 5:30PM; Sat 10AM to 4PM.

URBAN HERBAL

urbanherbal.com
407 Whitney Street
(830) 456-9667
A family-owned herbal boutique store including a gift shop, art gallery, greenhouse and gardens since 1985. Hours: Tues–Sat 10AM to 5PM.

Q WILDSEED FARMS

wildseedfarms.com
Hwy. 290 East, 7 miles east of Fredericksburg
(830) 990-1393
Visit the nation's largest working wildflower farm. See details under "Wildseed Farms" (page 11) in the Outdoor Fun & Recreation section of this brochure.



ABUNDANT OPPORTUNITIES TO visit mother nature

We like to say “Welcome to Fredericksburg. Now get lost!” because there are so many outdoor adventures to be had by all. There’s spectacular golf, amazing back country roads for cycling, hiking and climbing areas, scenic overlooks, parks, pools, birds and bats. Our temps are pretty mild all year round, and every spring you can witness a carpet of our legendary wildflowers, too. They’ve garnered quite a reputation over the years drawing many visitors just to see their blossoming rainbow of colors. The rolling hills of Gillespie County are unmatched. A short drive around the countryside, and you’ll agree—Mother Nature has a sweet spot for the Texas Hill Country.

BICYCLING

The back roads of Gillespie County provide miles of scenic views for road bicycle riding. Although the area roads are lightly traveled compared to big cities, riders are encouraged to obey all rules of the road to ensure their safety. With the hilly terrain, autos can come upon bicyclists without much notice, so please stay as far to the right as possible. Mountain biking enthusiasts will enjoy Hill Country State Natural Area, near Bandera, and Pedernales Falls State Park, near Johnson City. See page 37 for bicycle rentals.

BIRDING

Approximately 300 species of birds occur in the Texas Hill Country, where birding is great all year. The area is an overlap zone of ranges of eastern and western bird species, as well as some north and south species. Be sure to look for the endangered Black-capped Vireos and Golden-cheeked Warblers. An excellent place to view birds in Fredericksburg proper is the Live Oak Wilderness Nature Trail in Lady Bird Johnson Municipal Park. Stop for a bird check-list at the park office. Pedernales Falls State Park, near Johnson City, has wildlife viewing stations, while Enchanted Rock State Natural Area, 18 miles north of Fredericksburg, is also a premier bird-watching location.

FISHING

Fishing opportunities are available in Hill Country state parks and at area lakes. The closest place for kids to drop a line in the water is Lady Bird Johnson Municipal Park on Highway 16 South. Tres Molinos Ranch & Resort in Harper, TX, (830) 992-8783, offers a stocked pond along with bait and tackle. The Country Flyfisher, (830) 990-9453, can also help find places to fish around the area. See city and state parks, pages 10–11.

GOLF

1 Lady Bird Johnson Golf Course: A beautiful 18-hole, par-71 course that in 2012 underwent a \$2 million upgrade and renovation. Located at the Lady Bird Johnson Municipal Park, this 6,686-yard course offers 48 bunkers and water in

play at 10 holes. The fairways have been recontoured, and there is Champion Ultra Dwarf on greens. Restaurant in the clubhouse is open to the public. For more detailed information, see page 10.

HIKING

The Hill Country region of Texas offers numerous state parks for hiking. See list of state parks and natural areas in this brochure (pages 10–11).

HORSEBACK RIDING

Bit and Bridle Stables
(830) 649-0419

Blue Moon Ranch
(830) 998-0024

Circle K Trailrides
(214) 212-8070

Tres Molinos Ranch & Resort
(830) 992-8783

HUNTING

The Fredericksburg area of the Texas Hill Country is home to many native and exotic species of animals, which allow sportsmen almost year-round hunting opportunities. White-tail deer are the most popular and plentiful quarry pursued by hunters, but there are also turkey, doves and quail. Many ranches in the Hill Country now manage their herds to improve the quality and health of the animals. In addition to the native game, exotics such as axis deer, blackbuck antelope, fallow deer, sika deer and feral hogs are abundant.

ROCK CLIMBING

Estimated to be over one billion years old, the pink granite domes and boulders of Enchanted Rock State Natural Area make it one of the best climbing venues in all of Texas. See State Parks (pages 10–11).

Enchanted Rock State Natural Area is the outdoor lover’s haven—with all levels of hiking, climbing, camping, picnic areas, bird watching and various events. Tip: purchase your Day Pass in advance online to ensure your entry to the park.



Learn more on page 10

outdoor recreation

Please check VisitFredericksburgTX.com for current/seasonal hours.

SWIMMING POOLS

The City of Fredericksburg operates two public, outdoor swimming pools for summer enjoyment at Town Pool, located in the 100 block of W. Travis, and at Lady Bird Johnson Municipal Park, located on Highway 16 South. For additional information call (830) 990-2018. Another outdoor pool for summer use is located at the Lyndon B. Johnson State Park and Historic Site, near Stonewall (830) 644-2252. An indoor pool for year-round use is located at the Hill Country Memorial Wellness Center, located at 1020 South State Highway 16 (830) 997-1355.

VOLKSSPORTING

The first volkssport event (German walking sport) in the United States was held in Fredericksburg in June of 1976, and the Volkssportverein Friedrichsburg (club AVA-001) was the first club organized in the US. The Pilgrimage Routes consist of three different sanctioned walk routes. The routes start at the Sunday House Inn, located at 501 E. Main.

CITY PARKS

FRANTZEN PARK

fbgtx.org/235/Frantzen-Park

400 S. Orange

This quiet little park with picnic tables makes a great place for an outing with the family.

FREDERICKSBURG SKATE PARK

fbgtx.org/765/Skate-Park

Located at Old Fair Park at the corner of Ufer St. and Lincoln St.

Kids and adults alike can enjoy this free outdoor concrete riding surface and the new shaded area and basketball pavilion located near by.

L LADY BIRD JOHNSON MUNICIPAL PARK

fbgtx.org/236/Lady-Bird-Johnson-Municipal-Park

Texas Hwy. 16 S., 3 miles off Main St.
(830) 997-4202

This 340-acre park features wooded picnic and recreation areas. The Lady Bird Johnson Park has numerous pavilions, playgrounds, tennis courts, pickleball courts, a pool, fishing, a nature trail, RV spaces, tent sites and rally hall.
Hours: 7AM to 10PM Daily.
No admission fee.

L LADY BIRD JOHNSON GOLF COURSE

GolfFredericksburg.com

341 Golfer’s Loop, Hwy. 16 S., 3 miles off Main St.
(830) 997-4010

A beautiful 18-hole, par-71 course that in 2012 underwent a \$2 million upgrade and renovation. Located at the Lady Bird Johnson Municipal Park, this 6,686-yard course offers 48 bunkers and water in play at 10 holes. The fairways have been recontoured and there is Champion Ultra Dwarf on greens. Restaurant in the clubhouse is open to the public. Clubs available for rent.
Please confirm hours of operation at golffredericksburg.com.
Call or check the website for tee times, green fees and cart rental information.

L LIVE OAK WILDERNESS TRAIL

Lady Bird Johnson Municipal Park
Hwy. 16 S., 3 miles off Main St.
(830) 997-4202

The 10-plus acres of natural landscape can be enjoyed from a one-mile walking trail along Live Oak Creek. A handicap accessibility trail is about 500 feet in length connecting the bird feeding area and the butterfly habitat, and then continues along the Vista Loop Trail. The diversity of habitats includes lake, riparian woodland, post-oak savanna and short-grass meadows. A trail guide is available at the park office. No admission fee.

6 MARKTPLATZ PLAYGROUND

100 block of W. Main St. behind City Hall

A great place for young kids to burn off some energy. Playground has numerous climbing, balancing and swinging apparatus.
No admission fee.

STATE PARKS AND NATURAL AREAS

ABBREVIATION KEY

SP = STATE PARK

SNA = STATE NATURAL AREA

SHP = STATE HISTORICAL PARK

★ Denotes facilities closest to Fredericksburg. For reservations at all state parks, call (512) 389-8900.

★ BLANCO SP

tpwd.texas.gov/state-parks/blanco

Located in Blanco County, off US 281 on the south side of Blanco, at the Blanco River bridge.
(830) 833-4333

Park camping, RVs, shelters, picnicking, swimming, fishing, hiking, store.

★ E ENCHANTED ROCK SNA

tpwd.texas.gov/state-parks/enchanted-rock

16710 Ranch Road 965

Located in Gillespie and Llano Counties, 18 miles north of Fredericksburg on RR 965, or south from Llano on Texas 16 for 14 miles, then west on RR 965 for eight miles.
(830) 685-3636 – \$8 adults; children 12 and under free
Park camping, picnicking, 8.4 miles of hiking trails, nature trail, interpretive exhibits, rock climbing, watchable wildlife, store.
Open 7 days a week year-round, except for public hunting which occurs several times in the fall and winter months. Check the park’s Calendar of Events for exact dates.

Gates are open from 8AM to 10PM to accommodate campers.
NOTE: Reserved Day Passes are now available up to 30 days in advance of your visit. Purchase your Day Pass in advance online to ensure your entry to the park. texasstateparks.reserveamerica.com

GUADALUPE RIVER SP/HONEY CREEK SNA

tpwd.texas.gov/state-parks/guadalupe-river

Located in Comal & Kendall Counties.

(830) 438-2656

Park camping, RVs, picnicking, 3 miles of hiking trails, fishing, swimming, watchable wildlife, store.

Please check VisitFredericksburgTX.com for current/seasonal hours.

HILL COUNTRY SNA

tpwd.texas.gov/state-parks/hill-country

Located in Bandera and Medina Counties, 11 miles southwest of Bandera. From Bandera take Texas 173 one mile south to FM 1077 (Dixie Dude Rd), then west 10 miles until pavement ends. Continue on gravel road to park entrance.

(830) 796-4413

Park primitive camping, horseback riding, hiking, mountain biking, fishing, swimming, watchable wildlife, store.

INKS LAKE SP

tpwd.texas.gov/state-parks/inks-lake

Located in Burnet County, 9 miles west of Burnet off Texas 29, on Park Road 4.
(512) 793-2223

Park camping, RVs, shelters, picnicking, 7.5 miles of hiking trails, boating, water skiing, fishing, swimming, golf, watchable wildlife, facilities for handicapped, store.

LOST MAPLES SNA

tpwd.texas.gov/state-parks/lost-maples

Located in Bandera County, five miles north of Vanderpool on Ranch Road 187.
(830) 966-3413

Park camping, RVs (water and elec.), picnicking, 10 miles of hiking & nature trails, historical site/structure, watchable wildlife, fishing, swimming, interpretive exhibits/museum, store.

★ K LYNDON B. JOHNSON STATE PARK AND HISTORIC SITE

tpwd.texas.gov/state-parks/lyndon-b-johnson

Located in Gillespie County on Hwy. 290, between Johnson City and Fredericksburg.
(830) 644-2252

Park historical site/structure, picnicking, fishing, swimming, nature/historical trail, interpretive exhibits/museum, watchable wildlife, store.

★ PEDERNALES FALLS SP

tpwd.texas.gov/state-parks/pedernales-falls

Located in Blanco County, nine miles east of Johnson City on FM 2766.
(830) 868-7304

Park camping, RVs, picnicking, fishing, swimming, 8 miles of developed hiking trails (additional primitive trail system), mountain biking, horseback riding, nature trail, watchable wildlife, store.

SOUTH LLANO RIVER SP

tpwd.texas.gov/state-parks/south-llano-river

Located in Kimble County, five miles south of Junction, off US 377 on Park Road 73.
(325) 446-3994

Park camping, RVs, picnicking, fishing, swimming, 23 miles of hiking trails, mountain biking, nature trail, watchable wildlife, historical site/structure, store.

BATS

Millions of Mexican free-tail bats make their summer home in Central Texas. View the evening emergence of bats during the season which normally runs from mid-May to mid-October.

★ N OLD TUNNEL SP

tpwd.texas.gov/state-parks/old-tunnel

Located 10.5 miles south of Highway 290 on the Old San Antonio Road
(866) 978-2287

The upper viewing deck is open nightly at no charge (limited to 250 people). The lower viewing area is open on Thursday through Sunday evenings for special educational presentations for a \$5 per person fee, regardless of age (limited to the first 70 people). Call for emergence times which vary throughout the season.

ELEPHANTS

THE PRESERVE

visitthepreserve.com

650 Double Horn Rd.

(830) 992-0373

Providing intimate, meaningful experiences between people and animals.
Fri, Sat and Sun. \$125 per person; ages 3 and under free. Book online.

LAVENDER FARM AND PRODUCTS

BECKER VINEYARDS

beckervineyards.com

464 Becker Farms Road, off Jenschke Lane on Highway 290 East.
(830) 644-2681
Open Mon–Thurs 10AM to 5PM; Fri–Sat 10AM to 6PM;
Sun Noon to 6PM.

PEACHES

texaspeaches.com

Gillespie County produces 40% of all the peaches grown in the state of Texas. Roadside stands line many of the roads leading into Fredericksburg, with a major concentration along Highway 290 between Fredericksburg and Stonewall and along Highway 87 South. The peach season runs from mid-May through mid-August in a normal year. The Hill Country Fruit Council produces a listing of its members in a brochure titled Fredericksburg-Stonewall Peaches, which is normally available at the Fredericksburg Visitor Information Center.

WILDFLOWERS

Over 5,000 wildflower species make their home in the State of Texas, products of the state’s different ecosystems. The Texas Hill Country is defined by limestone cliffs, granite outcrops and hidden springs, providing diverse habitats for wildflowers.

Q WILDSEED FARMS

wildseedfarms.com

Hwy. 290 East, 7 miles East of Fredericksburg
(830) 990-1393

Visit the nation’s largest working wildflower farm. See colorful flowers from spring through first frost. Self-guided tours of the flowers available, and also visit the Brewbonnet Biergarten and the Market Center where you can find gifts and home décor, and Texas native plants and pottery.
Open Daily 9:30AM to 6PM; No admission fee.

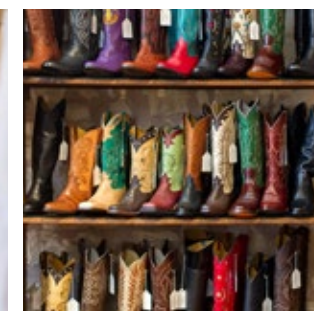
YOU MIGHT JUST HEAR SOMETHING

calling your name

With over 150 shops and boutiques, shopping remains one of the primary attractions in Fredericksburg. Many of the shops are concentrated on and off Main Street in the seven block area from Elk Street on the east to Milam Street on the west. Don't miss the shops in the Warehouse District or on West Main, past the Marktplatz or central square. Other shopping opportunities can be discovered around every corner in town and along major highways leading into Fredericksburg. And don't forget to check the less obvious! Two excellent sources of books relating to the history of the area are the gift shops at the Pioneer Museum and the LBJ State Park Visitor Center. Numerous antique dealers and interior design studios call Fredericksburg home, as well as craftsmen who create wonderful custom pieces for the home. For a full listing of all shops, or to search by retail category, visit VisitFredericksburgTX.com/shopping.



CLOTHING • HOME DÉCOR
ANTIQUES • ART • GIFTS
WESTERN WEAR • BOOKS
CUSTOM TABLES • CANDLES
KITCHEN GADGETS • WINE
FOOD • JEWELRY • TOYS
& MORE



Over 150 shops,
boutiques and art
galleries line historic
Main Street—and
beyond.



See full retail list at
VisitFredericksburgTX.com/shopping

shopping haven

AROUND EVERY CORNER YOU'LL FIND priceless inspiration

The Texas Hill Country has a long history of inspiring artistic creativity with its rough and rolling landscape, expansive skies, native plants and abundant wildlife. Classically trained artists from Dresden, Friedrich Richard Petri and Hermann Lungkwitz, were among our earliest settlers. Named among the "Top Five Western Art Towns" by Southwest Art magazine, Fredericksburg has continued its tradition of artistic collaboration, which in turn draws art lovers and collectors. Plan a visit during First Friday Art Walk Fredericksburg and you'll experience it all up close.

ART GALLERIES

**ARTISANS,
A TEXAS GALLERY**
artisanstexas.com
234 W. Main St.
(830) 990-8160
Fine art and fine craft by
Texas artists.

AW STUDIO GALLERY
311 E. San Antonio
(832) 623-8352
The working studio of artist/
painter Alan Wilcox.

**CHARLES MORIN
FINE ART**
vintagetexaspaintings.com
244 W. Main
(210) 710-6305
Vintage, Texas, Santa Fe and
American art, pottery and
sculpture.

**FREDERICKSBURG
ART GUILD**
fredericksburgartguild.com
308 E. Austin St.
(830) 997-4949
Working studio and gallery
of local art guild.

GALLERY 330
gallery330.com
330 W. Main St.
(830) 307-3339
Specializing in contemporary
realism and impressionism.

THE GRASSHOPPER
113 E. Main St.
(830) 997-5012
A gallery of art, collectibles,
gifts and locally handcrafted
wood items.

INSIGHT GALLERY
insightgallery.com
214 W. Main St.
(830) 997-9920
Featuring original artwork,
bronzes and more from
regional and national artists.

KOCH GALLERY
bertkoch.com
222 W. Main St.
(830) 992-3124
Specializing in Native
American Art.

**LARRY JACKSON
ANTIQUES &
ESTATE SERVICES**
larryjacksonantiques.com
201 E. San Antonio, Suite 1
(830) 997-0073
Antiques and gifts.

**THE GALLERY AT
VAUDEVILLE**
vaudeville-living.com/gallery
A unique venue for
contemporary art.
230 E. Main St.
(830) 992-3234

THE GOOD ART CO.
goodartcompany.com
218 W. Main St.
(830) 997-1111
Gallery and gifts.

URBAN HERBAL
urbanherbal.com
407 Whitney St.
(830) 456-9667
Gallery, gifts greenhouse
and gardens.

ART SCHOOLS

**FREDERICKSBURG
ARTISTS' SCHOOL**
fbgartschool.com
812 N. Llano, Suite A
(830) 997-0515

**THE YELLOW DOOR
STUDIO**
theyellowdoorstudio.com
810 N. Llano
(830) 992-3016

visual arts

Enjoy the monthly
"First Friday Art Walk
Fredericksburg" to
watch demos, mingle
with the artists and
enjoy local wine.



See a full calendar at
VisitFredericksburgTX.com/events



performing arts



Photo from Fredericksburg Theater Company's 2016 production of "Disney's Beauty and The Beast" Photo courtesy of James Fox.

From impressive theater productions to live music and independent films, there's no shortage of memorable entertainment to enjoy.

See a full calendar at VisitFredericksburgTX.com/events

OUR HILLS ARE ALIVE WITH jaw-dropping talent

Our German settlers brought more than their accordians with them. Their love of music remains a strong thread woven throughout the area. So hang onto your cowboy hats, and prepare to be blown away by some of the best performers in Texas. Every weekend, countless stages, restaurants and dance halls feature an array of musical genres, including Rockbox Theater's tribute band lineup.* For 80 years, the Fredericksburg Music Club has hosted classical musicians from across the globe. And for over 20 years, the Fredericksburg Theater Company has been "wowing" audiences with award-winning dramatic, comedic and musical productions like *South Pacific*, *Les Miserables* and *Beauty and the Beast*. It's truly an entertainment cornucopia with events like the Luckenbach Blues Festival, Van Der Stucken Festival, Maifest German Choral Concert, Hill Country Film Festival and—of course—the three days of polka at Oktoberfest.

*Weekly live music listing at VisitFredericksburgTX.com/events/concerts-live-music



Photo courtesy Adam Boley



PERFORMING ARTS ORGANIZATIONS

FREDERICKSBURG CHORALE
(830) 998-2198

FREDERICKSBURG COMMUNITY ORCHESTRA
(806) 549-2483

FREDERICKSBURG MUSIC CLUB
fredericksburgmusicclub.com
(830) 990-2886
Performances take place at the Fredericksburg United Methodist Church, 1800 N. Llano

FREDERICKSBURG THEATER COMPANY
fredericksburgtheater.org
1668 S US Hwy 87
(830) 997-3588
Performances take place at the Steve W. Shepherd Theater

GERMAN CHOIRS OF FREDERICKSBURG
Arion Männerchor
Hermannsöhne Gemischterchor
(806) 282-5476

HILL COUNTRY FILM FESTIVAL
hillcountryff.com
(512) 838-6828
Festival takes place at local venues.

PCAA MARKTPLATZ CONCERT SERIES
fredericksburgfestivals.com or oktoberfestinfbg.com/info/pcaa
(830) 997-8515
Concerts take place in the Adelsverein Halle at Marktplatz, 100 block of W. Main

ROCKBOX THEATER
rockboxtheater.com
109 N. Llano
(830) 997-7625

all things edible



Our local chefs are true culinary artists. From authentic German to gourmet Texas Hill Country cuisine, there is more variety here per capita than most large metro areas.



See a full listing on pages 20–23

YOU'LL ENJOY THE CUISINE AND savor the memories

From authentic German to traditional slow-smoked BBQ, we Texans take our food pretty seriously. The variety of edibles to be found in and around Fredericksburg is astounding, and the sophistication level of its preparation is nothing short of inspiring. Our talented chefs (who we like to call “culinary artists”) have built a loyal following for themselves—and the area. Many use fresh ingredients sourced locally including meats, cheeses, vegetables and of course, wine.

If the casual nature of a backyard picnic or family gathering is more your style, we certainly have the venues to satisfy. But if you’re in the mood for something a bit “higher-end,” you can choose

from an impressive array of sophisticated and elegant dining options designed with meticulous detail and surprisingly modern creativity.

Homemade ice cream. Fresh-baked bread. Spirit-filled chocolates. Jams and jellies. Gourmet coffee. Brick oven pizza. Farmers Market. Food festivals. Peaches in the summer. Cooking classes. The list goes on. And of course, we have the perfect wine to go with it all. Take your taste buds on vacation with you this time.

ENJOY:

- German
- Texas BBQ
- Tex-Mex
- Burgers
- Steak & Seafood
- Italian
- Chinese
- Hill Country Bakeries
- Coffee
- Ice Cream
- Candy



Please confirm days and hours of operation before visiting.

RESTAURANTS

GERMAN

  **THE AUSLANDER RESTAURANT & BIERGARTEN**
theauslanderfredericksburg.com
323 E. Main St.
(830) 997-7714
Open daily for lunch & dinner.

DER LINDENBAUM
derlindenbaum.com
312 E. Main St.
(830) 997-9126
Open daily for lunch & dinner.
Closed seasonally on Tues.

 **FRIEDHELM'S BAVARIAN INN**
friedhelmsbavarianinn.com
905 W. Main St.
(830) 997-6300
Open Wed–Sun for lunch & dinner.

OLD GERMAN BAKERY & RESTAURANT
oldgermanbakeryandrestaurant.com
225 W. Main St.
(830) 997-9084
Open Fri–Tues for breakfast & lunch.

HILL COUNTRY

 **CABERNET GRILL TEXAS WINE COUNTRY RESTAURANT**
cabernetgrill.com
2805 S. State Hwy. 16
at Boos Lane
(830) 990-5734
Open Tues–Sat for dinner.

 **CAFÉ AT THE RIDGE MARKETPLACE**
shopsattheridge.com
13439 S. Ranch Road 783
(830) 896-0420
Open Tues–Sun for lunch & dinner.
Open Fri–Sat also for breakfast.

 **GRANITE HOUSE LOUNGE**
granitehouselounge.com
504 Granite Ave.
(830) 992-3101
Open Tues–Sat for dinner.

 **NAVAJO GRILL**
navajogrill.com
803 E. Main
(830) 990-8289
Open Thurs–Tues for dinner.

 **THE RACE BARN**
theracebarn.com
35 Fair Drive
(830) 997-4058
Open Thurs–Sat for lunch and dinner.
Sun open for lunch only.

RATHSKELLER HILL COUNTRY BISTRO
rathskellerrestaurant.net
260 E. Main St.
(830) 990-5858
Open Wed–Mon for breakfast,
lunch and dinner.

 **SILVER CREEK BEER GARDEN & GRILLE**
silvercreekfbg.com
310 E. Main St.
(830) 990-4949
Open Fri–Mon for lunch and dinner.

WILD HARE BISTRO
whbistro.com
319 E. Main
(830) 992-3070
Open Thurs–Mon for lunch
and dinner.

BARBECUE

 **BACKWOODS BBQ**
backwoodsbbq.net
320 FM 2093 (Tivydale Rd)
(830) 992-3262
Open Wed–Sat for lunch and dinner.
Open Sun for lunch only.

DAVID'S OLD FASHIONED PIT BBQ
davidsoldfashionedpitbbq.com
809 W. Main
(830) 997-7753
Open daily for breakfast and lunch.


 **LÅKENVELDER BBQ**
lakenvelderbbq.com
116A N. Crockett
(830) 307-9617
Open Thurs–Sun for lunch and dinner.

 **MAC'S BAR-B-Q & CATERING**
macstexasbbq.com
204 E. Main
(830) 307-1005
Open Thurs–Mon for lunch.
Open Fri–Sat also for dinner.

PFISTER'S BBQ
facebook.com/Pfiesters-BBQ-159163978220008
913 E. Main
(830) 357-8418
Open Wed–Sat for lunch until
sold out.

TEX-MEX/MEXICAN

 **BEJAS**
bejasfbg.com
(830) 992-3172
215 E. Main St.
Open Mon–Sat for lunch and dinner.
Open Sun for lunch only.

 **CAMPO AZUL MEXICAN GRILL & BAR**
facebook.com/campoazul2
803 S. Adams St.
(830) 997-3161
Open Mon–Sat for breakfast, lunch
and dinner. Open Sun for breakfast
and lunch only.

EL GALLO MEXICAN RESTAURANT
facebook.com/elgallomexicanrestaurant
11807 US Hwy. 290 W
Harper, TX
(830) 669-2406
Open Wed–Sat for dinner.
Open Sat also for lunch.


 **HILDA'S TORTILLAS RESTAURANT & BAR**
hildastortillas.com
149 FM 2093 (Tivydale Rd.)
(830) 997-6105
Open Mon–Sat for breakfast,
lunch and dinner.

 **LA TEQUILA JALISCO**
latequilarestaurant.com
1035 S. State Hwy 16
(830) 307-9007
Open daily for breakfast, lunch
and dinner.

 **MAIN STREET TAQUITOS**
facebook.com/Main-Street-Taquitos-1127100017454700
326 E. Main
(830) 307-9627
Open Wed–Sun for lunch.
Open Thurs–Sat also for dinner.

 **MAMACITA'S MEXICAN RESTAURANT**
mamacitas.com
506 E. Main St.
(830) 997-9546
Open daily for lunch and dinner.

MI PLAZA
515 E. Highway St.
(830) 307-9773
Open Mon–Sat for breakfast,
lunch and dinner.

 **TAQUERIA ALTOS DE JALISCO 6**
facebook.com/Taqueria-Altos-De-Jalisco-6-111526048885508
1410 E. Main St.
(830) 990-8554
Open daily for breakfast, lunch
and dinner.

SANDWICHES/ SOUPS/SALADS

AIRPORT DINER
hangarhotel.com/diner.htm
155 Airport Rd.
(830) 997-4999
Open Fri–Sun for breakfast
and lunch.

CITY CAFÉ
505 W. Main St.
(830) 307-3346
Open Tues–Sun for breakfast
and lunch.

 **EL MILAGRO TWENTY-TWELVE**
facebook.com/elmilagro2012
249 E. Main St.
(830) 307-3051
Open Tues–Sat for breakfast, lunch
and dinner. Open Sun for breakfast
and lunch only.

Please confirm days and hours of operation before visiting.

FRESH PICKENS
freshpickensfbg.com
58 Ranch Road 1376
(830) 765-0468
Open daily for breakfast, lunch
and dinner.

SUBWAY (HWY 16 SOUTH)
1017 S. Adams
(830) 992-2052
Open Mon–Sat for lunch and
dinner. Open Sun for lunch only.

SUBWAY (WALMART)
1435 E. Main St.
(830) 997-7444
Open Mon–Sat for lunch and
dinner. Open Sun for lunch only.

ITALIAN/PIZZA

BELLA SERA
facebook.com/metiuk
1311 S State Hwy 16
(830) 990-0140
Open daily for lunch and dinner.

DOMINO'S PIZZA
pizza.dominos.com/texas/fredericksburg/1425-e-main-st/
1425 E. Main St. #400
(830) 997-4600
Open daily for lunch and dinner.

HEAVENLY PIZZA & WINGS
heavenly-pizza-wings.business.site
105 S. Adams
(830) 383-1064
Open Tues–Sat for dinner.

MR. GATTI'S PIZZA
gattispizza.com/locations/gattis-pizza-fredericksburg/
2931 S. State Hwy. 16
(830) 997-9797
Open daily for lunch and dinner.

PASTA BELLA
pastabellarestaurant.com
103 S. Llano St.
(830) 990-9778
Open Mon–Sat for lunch
and dinner.

PIZZA HUT
locations.pizzahut.com/tx/fredericksburg/1104-east-main-st
1104 E. Main St.
(830) 997-7222
Open daily for lunch and dinner.

 **WEST END PIZZA CO.**
westendpizzacompany.com
Opening at 207 E. San Antonio in Spring, 2021

FAMILY DINING

 **ALTDORF BIERGARTEN**
altdorfs.com
301 W. Main St.
(830) 997-7865
Open Wed–Sat for lunch and
dinner. Open Sun for lunch only.

ANDY'S GRILLE
andysgrille.com
413 S. Washington
(830) 997-3744
Open daily for breakfast and lunch.

  **CULTURES GRILL AND BAR**
culturesgrillandbar.com
318 E. Main St.
(830) 997-8100
Open daily for breakfast, lunch
and dinner.

  **HONDO'S ON MAIN**
hondosonmain.com
312 W. Main St.
(830) 997-1633
Open Wed–Sun for lunch and
dinner.

LONGHORN CAFÉ
23624 W. US Hwy 290
Harper, TX
(830) 864-4328
Open Tues–Sat for breakfast, lunch
and dinner. Open Sun for breakfast
and lunch only.

LONGHORN STREET CAFÉ
621 Longhorn St.
(830) 456-8085
Open Tues–Thurs for breakfast
and lunch.

 **NURY'S**
nuryscuisine.com
714 S. Washington
(830) 992-3217
Open Tues–Sun for breakfast and
lunch. Open Fri–Sat also for dinner.

 **SOZIAL HAUS**
sozialhaus-fbg.com
107 S. Llano
(830) 307-3208
Open Thurs–Tues for lunch and
dinner. Open Wed for lunch only.

SQUEEZE IN
squeezein.com/fredericksburg-tx
105 S. Adams
(830) 383-1212
Open daily for breakfast and lunch.

 **SUNSET GRILL**
sunsetgrilltx.com
902 S. Adams St.
(830) 997-5904
Open Thurs–Tues for breakfast
and lunch.

 **TUBBY'S**
tubbysfbg.com
318 E. Austin
(830) 307-3026
Open daily for lunch and dinner.

 **WESTERN EDGE KITCHEN & COCKTAILS**
westernedgecellars.com
228 W. Main
(830) 992-3157
Open Tues–Sun for lunch
and dinner. Open Sat–Sun
also for breakfast.

 **WOERNER WAREHOUSE CAFÉ & CATERING**
woernerwarehouse.com
305 S. Lincoln
(830) 997-2246
Open Mon–Sat for breakfast
and lunch.

BURGERS/ FAST FOOD

   **BURGER BURGER**
burgerburgerfbg.com
209 E. Main St.
(830) 997-5226
Open Mon–Sat for lunch and
dinner. Open Sun for lunch only.

BURGER KING
locations.bk.com/tx/fredericksburg/1102-south-state-highway-16.html
1102 S State Hwy 16
(across from Fredericksburg
High School)
(830) 304-5464
Open daily for breakfast, lunch
and dinner.


CHICKEN EXPRESS
facebook.com/CEFedericksburg
1125 S. State Hwy 16
(830) 383-1019
Open daily for lunch and dinner.

CHURCH'S CHICKEN
614 E. Main St.
(830) 997-7333
Open daily for lunch and dinner.

DAIRY QUEEN
dairyqueen.com/us-en/locator/Detail/3902
902 E. Main St.
(830) 997-4648
Open daily for lunch and dinner.

 **LONE STAR BAR & GRILL**
facebook.com/lonestarcafex2
4174 W. US Hwy 290
(830) 456-2514
Open Wed–Sat for dinner. Open
Sun for lunch and dinner.

 **LUCKENBACH FEED LOT**
luckenbachtexas.com/food-in-luckenbach
412 Luckenbach Town Loop
(830) 997-3224
Open Thurs–Sun for lunch
and dinner.

 **MCDONALD'S**
611 E. Main St.
(830) 997-7600
Open daily for breakfast, lunch
and dinner.

 **PECAN GROVE STORE**
pecangrovestore.com
5244 N. State Hwy 16
(830) 990-4433
Open Thurs–Sat for lunch and
dinner.

 **PORKY'S HAMBURGER & ONION RING CO.**
facebook.com/PorkysHamburgers
1719 N US Hwy 87
(830) 997-6882
Open Mon–Sat for lunch.
Open Fri also for dinner.

  **RED BIRD GRILL**
golffredericksburg.com/red_bird_grill
341 Golfers Loop
(830) 997-4010
Open Tues–Sun for breakfast
and lunch.



Pet Friendly (OUTSIDE ONLY ON LEASH)

Please confirm days and hours of operation before visiting.

🐾 SONIC DRIVE-IN
facebook.com/Sonic.Drive.In.2025
1106 E. Main St.
(830) 997-7303
Open daily for breakfast, lunch and dinner.

WHATABURGER
1301 E. Main St.
(830) 990-8428
Open daily for breakfast, lunch and dinner.

FINE DINING

🍷 AUGUST E'S
august-es.com
203 E. San Antonio
(830) 997-1585
Open Tues–Sat for dinner.

🍷 FARM HAUS BISTRO AT THE FREDERICKSBURG HERB FARM
fredericksburgherbfarm.com/restaurant.htm
405 Whitney St.
(830) 997-8615
Open daily for breakfast and lunch.
Open Fri–Sat also for dinner.

🍷 🐾 HILL TOP CAFÉ
hilltopcafe.com
10661 N. US Hwy. 87
10 miles north on Hwy. 87
(830) 997-8922
Open Tues–Sun for lunch and dinner.

🍷 OTTO'S GERMAN BISTRO
ottosfbg.com
316 E. Austin
(830) 307-3336
Open daily for dinner.

🍷 🐾 VAUDEVILLE BISTRO & V SUPPER CLUB
vaudeville-living.com/dining
230 E. Main St.
(830) 992-3234
Bistro open daily for lunch. Open Fri–Sat also for dinner. Supper Club open Thurs for dinner.

SEAFOOD

CATFISH HAVEN
catfishhaventx.com
816 W. Main St.
(830) 997-9009
Open Tues–Sat for lunch and dinner.

🍷 MARTINI'S OYSTER HOUSE
facebook.com/MartinisOysterHouse
107 N. Adams
(512) 953-9428
Open daily for lunch and dinner.

STEAKHOUSE

🍷 CROSSROADS SALOON & STEAKHOUSE
crossroads-texas.com
305 W. Main St.
(830) 992-3288
Open Wed–Sun for dinner.

🍷 HITCHIN' POST
facebook.com/Hitchin-Post-Steakhouse-of-Fredericksburg-106383194465607
105 S. Llano
(830) 992-3777
Open Thurs–Tues for lunch and dinner.

🍷 K-BOB'S STEAKHOUSE
facebook.com/fredericksburgkbobs
518 E. Main St.
(830) 307-3125
Open daily for lunch and dinner.

CHINESE

ASIAN GARDEN
asiangarden78624.com
1408 E. Main St.
(830) 997-5555
Open daily for lunch and dinner.

PANDA CHINESE RESTAURANT & SUSHI BAR
pandarestaurantfredericksburg.com
504 E. Main St.
(830) 990-8888
Open daily for lunch and dinner.

BREWERY RESTAURANTS

ALTSTADT BREWERY
altstadtbeer.com
6120 E. US Hwy 290
(830) 304-2337
Open Wed-Sat for lunch and dinner.

FREDERICKSBURG BREWING CO.
yourbrewery.com
245 E. Main St.
(830) 997-1646
Open daily for lunch and dinner.

SPORTS BAR

🍷 🐾 BUC'S BAR & GRILL
bucsbarandgrill.com
304 N. Llano
(830) 992-1283
Open daily for dinner.

WINERY RESTAURANTS

BREWBONNET BIERGARTEN AT WILDSEED FARMS
wildseedfarms.com/pages/brewbonnet-biergarten
100 Legacy Drive
(830) 990-1393
Open daily for lunch.

🐾 INWOOD ESTATES WINERY AND BISTRO
inwoodwines.com
10303 E. US Hwy. 290
(830) 997-2304
Open daily for lunch.

FOOD TRUCKS

BOUDREAUX'S CAJUN KITCHEN
facebook.com/Boudreauxs-Cajun-Kitchen-103173227846636
4222 S State Hwy 16
(830) 307-0877
Open Thurs–Mon for lunch.

CC'S TORTAS
facebook.com/ccstortas
1119 S. State Hwy 16
(830) 456-4595
Open Mon–Fri for breakfast and lunch.

ENCHANTED INN ROADSIDE
facebook.com/enchantedinnrestaurant
713 W. Main St.
(830) 997-5206
Open Tues–Sat for breakfast and lunch. Open Fri also for dinner.

FREDERICKSBURG MINI-DONUT COMPANY
facebook.com/fredericksburgminidonutcompany
1102 E. Main
(830) 889-2228
Open Thurs–Sun for breakfast and lunch.

MUNCH FOOD PARK
munchpark.com
303 E. Highway St.
(830) 990-4332
Open daily for lunch and dinner.

• **BEANS & GREENS**
facebook.com/Beans-Greens-104214144872763

• **BURGALICIOUS SHAVED ICE**
facebook.com/Burgalicious-100321868473497

• **DOS HERMANITAS KITCHEN**
facebook.com/pages/category/Food-Truck/Dos-Hermanitas-Kitchen-114428036935869

• **NURY'S FOOD TRUCK**
nuryscuisine.com

PROMETHEUS PIZZA
prometheus-pizza.com
1180 S US Hwy 87
Open Wed–Sat for dinner.

TACOS MI CASA
722 S. US Hwy 87
(830) 307-0095
Open Mon–Fri for breakfast and lunch.

BAKERIES

🐾 EMMA & OLLIE
emmaolliefbg.com
607 S. Washington
(830) 383-1013
Open Wed–Sun for breakfast and lunch.

🐾 FREDERICKSBURG PIE COMPANY
fbgpie.com
108 E. Austin St.
(830) 990-6992
Open Thurs–Sat until sold out.

Please confirm days and hours of operation before visiting.

GOLD ORCHARDS BAKERY
facebook.com/goldorchardsinc
14329 E US Hwy 290 in Stonewall
(830) 644-2890
Open seasonally May through December.

HILL COUNTRY DONUTS & KOLACHES
605 E. Main St.
(830) 990-2424
Open daily for breakfast and lunch.

PRITZER SWEET SHOP
facebook.com/Pritzer-Sweet-Shop-2260683597530697
141 E. Main
(830) 307-9544
Open Thurs–Mon for lunch.
Open Fri–Sat also for dinner.
Open Sun also for breakfast.

SWEETBRIAR ROSE
sweetbriarrose290.com
9973 E US Hwy 290
(830) 307-2646
Open Thurs-Sun for breakfast and lunch.

TOP DONUTS
915 E. Main St.
(830) 997-9976
Open daily for breakfast and lunch.

🐾 TWISTED SISTERS BAKE SHOP
facebook.com/twistedsistersbakeshop
111 S. Washington
(830) 990-7999
Open daily for breakfast and lunch.

COFFEE/TEA HOUSES

📶 CALICHE COFFEE BAR & ROASTERY
calichecoffee.com
338 W. Main St.
Open daily for breakfast and lunch.

📶 JAVA RANCH ESPRESSO BAR & CAFÉ
javaranchcoffee.com
114 E. Main St.
(830) 990-4517
Open daily for breakfast and lunch.

KAFFEE HAUS
facebook.com/kaffeehaus.tx
218 E. Main
(830) 383-1055
Open Wed–Mon for breakfast and lunch.

LAINA'S BITE & BREW
facebook.com/lainasbiteandbrew
613 W. Main
(830) 307-9070
Open Thurs–Tues for breakfast and lunch.

STARBUCKS
1424 E. Main
(830) 990-1191
Open daily for breakfast, lunch and dinner.

ICE CREAM / FROZEN YOGURT

📶 CLEAR RIVER ICE CREAM, BAKERY & DELI
icecreamandfun.com
138 E. Main St.
(830) 997-8490
Open daily for lunch and dinner.

🐾 KELANI YOGURT
facebook.com/kelaniyogurtfredericksburg
301 E. Main St.
(830) 307-3184
Open daily for lunch and dinner.

GOURMET CHOCOLATES AND CANDY

BIG POP'S POPCORN CO.
bigpopspopcornco.com
217 E. Main
(830) 992-3208
Open daily.

CHOCOLAT
liquidchocolates.com
251 W. Main St.
(830) 990-9382
Open daily.

CHOCOLATES EL REY
chocolates-elrey.com
46 S. Ranch Road 1623
Stonewall, TX
(830) 644-2012
Open Wed–Sun.

FREDERICKSBURG FUDGE
fbgfudge.com
178 Industrial Loop
(830) 997-2133
Open Thurs–Sat and Mon–Tues.

FREDERICKSBURG'S POPCORN EMPORIUM
128 E. Main
(830) 992-3436
Open daily.

LONE STAR CANDY BAR
lonestarcandybar.com
254 E. Main St.
(830) 990-9100
Open daily.

RUSTLIN' ROBS
rustlinrobs.com
121 E. Main St.
(830) 990-4750
Open Mon–Sat.

HELPFUL TIP!

Confirm current hours of operation at all venues by contacting them directly or checking online listings at VisitFredericksburgTX.com.

From home grown peaches and vegetables at summer roadside stands, to home made ice cream at local sweet shops, there's no shortage of treats to go around.



AWARD WINNING AND SIMPLY SCENIC

we'll toast to that

The Texas Hill Country is home to over 100 wineries and vineyards, and Fredericksburg is the epicenter of Texas Wine Country. There are 50 wineries and tasting rooms located in Fredericksburg and Gillespie County. Our Gillespie County wineries have been producing a variety of quality wines that have won both state and national honors.

Believe it or not, wine production in Fredericksburg dates back to the original settlers who used the native mustang grape to produce wines. Modern winemakers realized the landscape and climates in the Texas Hill

Country were conducive to expanding on the idea and a booming industry was reborn.

Now it is a bustling business drawing visitors from all over the globe. Each winery and vineyard has its own distinct personality. From quintessential Tuscan to simply modern, some feature courtyards with spectacular views while others offer quiet patios with lush shade.

While the wine gets all of the glory, don't forget our craft breweries which are winning rave reviews.

Enjoy responsibly. See transportation services and tours on pages 27 and 37.



Please confirm days and hours of operation before visiting.

WINERIES

Tours and tastings available at most wineries in Gillespie County. Tasting fees apply. Tour groups must call to make reservations for a tasting. Note: These facilities have a winery "G" permit from the Texas Alcoholic Beverage Commission.

1 AB ASTRIS WINERY
abastriswinery.com
320 Klein Rd., Stonewall, TX
(830) 644-8369
Open Fri–Sun.

2 ADEGA VINHO WINERY
adegavinho.com
1000 Ranch Road 1623,
Stonewall, TX
(830) 265-5765
Open Thurs–Sun.

3 ALEXANDER VINEYARDS
alexandervineyards.com
6360 Goehmann Lane,
5 miles east on Hwy. 290
(830) 865-3975
Open daily.

4 ARROWHEAD CREEK VINEYARD
arrowheadcreekvineyard.com
13410 E US Hwy 290
(830) 307-7200
Open daily.

5 AUGUSTA VIN WINERY
augustavin.com
140 Augusta Vin Lane
(830) 307-1007
Open daily.

6 BARONS CREEK VINEYARDS
baronscreekvineyards.com
5865 E. US Hwy. 290
(830) 304-3000
Open daily.

7 BECKER VINEYARDS
beckervineyards.com
Hwy. 290 East
11 miles turn right on
Jenschke Lane, Stonewall, TX
(830) 644-2681
Open daily.

"Forget Tuscany —
the Texas Hill Country
is the rising (and
surprising) star of
U.S. wine production."
— Lonely Planet



See winery map on page 41

wine, brews & spirits

Please confirm days and hours of operation before visiting.

8 BELL MOUNTAIN VINEYARDS — CURRENTLY CLOSED FOR RENOVATION

bellmountainwinery.com
Hwy. 16 North 14 miles
Willow City, TX
(830) 685-3297

9 BINGHAM FAMILY VINEYARDS

binghamfamilyvineyards.com
(830) 304-6616
3915 B East US Hwy 290
Open daily.

10 CARTER CREEK WINERY RESORT & SPA

cartercreek.com
4064 W US Hwy 290
Johnson City, TX
(877) 232-0138
Open Wed–Sun.

11 CHISHOLM TRAIL WINERY TEMPORARILY CLOSED

chisholmtrailwinery.com
Hwy. 290 West 9 miles,
left to 2367 Usener Rd.
(830) 990-2675

12 CICADA CELLARS

cicadacellars.com
14746 E. US Hwy 290, Stonewall, TX
(830) 456-9324
Open Fri–Sun.

13 FAT ASS RANCH & WINERY

fatasswine.com
51 Elgin Behrends Rd.
(830) 644-2300
Open daily.

14 FIESTA WINERY 290

fiestawinery.com
6260 E. US Hwy. 290
(830) 997-4466
Open daily.

15 GRAPE CREEK VINEYARDS

grapecreek.com
10587 E. US Hwy. 290,
9 miles east of Fredericksburg
(830) 644-2710
Open daily.

16 HEATH SPARKLING WINES

heathsparkling.com
10591 E US Hwy 290
(830) 304-1011
Open daily.

17 HILMY CELLARS

hilmywine.com
12346 E US Hwy. 290
(830) 644-2482
Open daily.

18 HYE MEADOW WINERY

hyemeadow.com
10257 US Hwy. 290, Hye, TX
(512) 657-2855
Closed Tues.

19 INWOOD ESTATES WINERY AND BISTRO

inwoodwines.com/fredericksburg
10303 E. US Hwy. 290
(830) 997-2304
Open daily.

20 KALASI CELLARS

kalasicellars.com
414 Goehmann Lane
(830) 992-3037
Open Wed–Sun. Reservations required
on Wed–Thurs.

21 KUHLMAN CELLARS

kuhlmancellars.com
18421 E. US Hwy. 290, Stonewall, TX
(512) 920-2675
Open Thurs–Mon with reservations
highly recommended.

22 LONGHORN CELLARS

longhorncellars.com
315 Ranch Road 1376
(830) 990-2990
Open Thurs–Mon. By reservation
on Sat.

23 LOS PINOS RANCH VINEYARDS - FREDERICKSBURG

lospinosranchvineyards.com
6009 E US Hwy 290, Suite A
Open Thurs–Mon.

24 MENDELBAUM CELLARS

mendelbaumcellars.com
10207 E. US Hwy. 290
(830) 997-7000
Open daily.

25 MESSINA HOF HILL COUNTRY WINERY

messinahof.com/hillcountry
9996 E. US Hwy. 290
(830) 990-4653
Open Fri–Sun. By reservation on
Sat and Sun.

26 NARROW PATH WINERY & VINEYARD

narrowpathwinery.com
6331 S. Ranch Road 1623
Stonewall, TX
(830) 644-2144
Open Thurs–Mon. By reservation on
Sat and Sun.

27 PEDERNALES CELLARS

pedernalescellars.com
2916 Upper Albert Road, Stonewall, TX
(830) 644-2037
Open daily by reservation.

28 RON YATES WINE

ronyateswines.com
6676 W. US Hwy 290, Hye, TX
(512) 585-3972
Open daily by reservation.

29 SAFARI WINERY

safariwinery.com
5479 E US Hwy 290
(830) 998-5956
Open daily.

30 SANTAMARIA CELLARS

santamariacellarswines.com
12044 Hwy. 16 South
(830) 998-8621
Open Fri–Sun.

31 SIGNOR VINEYARDS

signorvineyards.com
362 Livesay Lane off E US Hwy 290
(830) 304-7446
Open daily.

32 SIX SHOOTER CELLARS

sixshootercellars.com
6264 E. US Hwy. 290
(830) 428-0810
Open Thurs–Mon.

33 SLATE MILL WINE COLLECTIVE

slatemillwinecollective.com
4222 S State Hwy 16
(830) 391-8510
Open Thurs–Mon.

34 SOUTHOLD FARM & CELLAR

southoldfarmandcellar.com
330 Minor Threat Lane
(512) 829-1650
Open Thurs–Mon by reservation.

35 TEXAS HERITAGE VINEYARD

texasheritagevineyard.com
3245 E US Hwy 290
(830) 456-6059
Open daily.

36 TEXAS HILLS VINEYARD

texashillsvineyard.com
878 Ranch Road 2766, Johnson City, TX
(830) 868-2321
Open daily.

37 TEXAS WINE COLLECTIVE (FORMERLY 4.0 CELLARS)

fourpointwine.com
10354 E US Hwy. 290
(830) 997-7470
Open daily.

38 THE WINE GARAGE

winegarage.com
11598 E. US Hwy 290
(830) 644-2600
Open Saturdays.

39 WEDDING OAK WINERY

weddingoakwinery.com/visit-us-in-fredericksburg
6009 E US Hwy 290, Suite B
(830) 304-9333
Open Wed–Mon.

40 WILLIAM CHRIS VINEYARDS

williamchriswines.com
10352 US Hwy. 290, Hye, TX
(830) 998-7654
Open daily by reservation.

41 WOODROSE WINERY

woodrosewinery.com
Hwy. 290 East 12 miles, right to 662
Woodrose Lane, Stonewall, TX
(830) 644-2539
Open Fri–Sun.

URBAN WINE TRAIL

A ANDREUCCI WINEROOM

vinoandreucci.com
401 E. Main, Suite 1C
(830) 307-9529
Open Thurs–Sun.

B BECKER VINEYARDS ON MAIN

beckervineyards.com
307 E. Main
(830) 644-2681 ext.501
Open daily.

C CROSS MOUNTAIN VINEYARDS

crossmountainvineyards.com
308 E. Main
(830) 992-3273
Open Wed–Mon.

D FAT ASS RANCH & WINERY ON MAIN

fatasswine.com
153 E. Main St.
(830) 997-9095
Open daily.

E FIESTA WINERY FREDERICKSBURG

fiestawinery.com
147 E. Main St.
(830) 307-3328
Open daily.

Please confirm days and hours of operation before visiting.

F FREDERICKSBURG WINERY

fbgwinery.com
247 W. Main St.
(830) 990-8747
Open daily.

G GRAPE CREEK VINEYARDS ON MAIN

223 E. Main
(830) 992-3373
Open daily.

H LOST DRAW CELLARS

lostdrawcellars.com
113 E. Park
(830) 992-3251
Open daily.

I NARROW PATH WINERY ON MAIN

narrowpathwinery.com
113 E. Main St.
(830) 644-2144
Open Fri–Sun.

J PONTOTOC VINEYARD WEINGARTEN

pontotocvineyard.com
320 W. Main St.
(512) 658-0023
Open Fri–Sun.

K VINTNERS HIDEAWAY

vintnershideaway.com
207 S. Llano
(830) 992-3370
Open Thurs–Sun.

WINE/BEER/ COCKTAIL BARS

Y 78624 THE BAR

78624thebar.com
229 E. Main
(830) 992-3186
Open Thurs–Sun.

Y CHASE'S PLACE COCKTAILS + KITCHEN

chasesplacecocktails.com
313 E. San Antonio
(512) 660-1487
Open Tues–Sat.

Y DER DAIWEL

321 E. Main
(830) 992-3431
Open daily.

📶 LINCOLN STREET WINE MARKET

lincolnst.com
111 S. Lincoln
(830) 997-8463
Open daily.

Y PIONEER BAR

pioneerfbg.com
212 E. Main
(830) 992-3733
Open daily.

Y THE CLUB AT BARONS CREEKSIDE

theclubfbg.com
316 Goehmann Lane
(830) 992-3421
Open Thurs–Sat.

Y THE OFFICER'S CLUB AT THE HANGAR HOTEL

hangarhotel.com
155 Airport Rd.
(830) 997-9990
Open Wed–Sat.

Y THE STABLE COCKTAIL BAR

102 E. Ufer
(512) 953-9428
Open daily.

Y VELVET LOUNGE

facebook.com/velvetloungefbg
401 E. Main, Suite D
(830) 992-3047
Open daily.

WINE TASTING ROOMS

FISCHER & WIESER CULINARY ADVENTURE TASTING ROOM

jelly.com/page/premier-tasting-room
1406 S. US Highway 87
(830) 997-8969
Open daily.

LA BERGERIE

labergeriemarket.com
312 E. Austin
(830) 992-3036
Open daily.

PERSPECTIVE CELLARS

iloveperspectivecellars.com
247 E. Main
(512) 423-7825
Open daily.

TEXAS VINEYARDS & BEYOND

texasvineyardsbeyond.com
329 1/2 E. Main St.
(830) 990-9199
Open Thurs–Mon.

TEXAS WINE CELLARS, ETC.

217 1/2 E. Main St.
(830) 997-5780
Open daily.

BREWERIES & DISTILLERIES

ALTSTADT BREWERY

altstadtbeer.com
6120 E. US Hwy 290
(830) 304-2337
Open Wed–Sun.

ELK STORE WINERY & DISTILLERY

elkstore1895.com
327 E. Main
(830) 997-2665
Open daily.

FREDERICKSBURG BREWING COMPANY

yourbrewery.com
245 E. Main St.
(830) 997-1646
Open daily.

IRON GOAT DISTILLERY

irongoatdistillery.com
817 Usener Road
(830) 307-4357
Open by appointment.

TRANSPORTATION TO WINERIES

19TH HOLE WINE TOURS

19thholewinetours.com
(830) 733-7007

290 WINE SHUTTLE

290wineshuttle.com
(210) 724-7217

830 ELEVATED WINE TOURS

830elevatedwinetours.com
(830) 998-2295

ABSOLUTE CHARM WINE TOURS

absolutecharmwinetours.com
(830) 992-0101

BROOKE'S BUBBLE BUS

brookesbubblebus.com
(830) 998-7007

CELLAR RAT WINE TOURS

cellarratwinetours.com
(325) 374-8921

CREEKSTREET WINE TOURS

creekstreetwinetours.com
(832) 247-0914

ELIZABETH HAUS WINE TOURS

elizabethhauswinetours.com
(830) 998-8665

FREDERICKSBURG UNCORKED

fredericksburguncorked.com
(830) 998-6113

GEORGE'S 290 WINE TOURS

290winetours.com
(830) 456-5197

HILL COUNTRY EXPRESS WINE TOURS, SIGHTSEEING & CHARTERS

hillcountryexpresstours.com
(210) 413-9354

KEIDEL WINE TOURS

keidelwinetours.com
(512) 775-6805

MAJESTY WINE TOURS

majestywinetours.com
(830) 456-1883

MOON'S VINEYARD VOYAGE

moonsvineyardvoyages.com
(254) 913-7220

OPEN RANGE TOURS

openrangetours.com
(830) 391-9336

RESERVE TOURS

reservefbg.com
(830) 998-7990

STAGECOACH SHUTTLE SERVICE

stagecoachtaxiandshuttle.com
(830) 385-7722 / (830) 997-8044

TEXAS WINE TOURS

fredericksburgtexaswinetours.net
(830) 997-8687

THE PERFECT ACCOMMODATIONS COME WITH real sweet dreams

Have you ever looked at a magazine and said “I want to stay THERE!”? Well, Fredericksburg is chock-full of those kinds of accommodations. From romantic country cabins to luxury Main Street lofts, you will be astounded at the variety of lodging available—no matter the age, taste, budget or size of your group. Prefer name brand hotels? No problem. We have plenty of those, too.

Our accommodations have grown over the years as people realize that Fredericksburg is simply not a day trip anymore. But, not to worry. We have experienced travel planners at the Fredericksburg Convention and Visitor Bureau’s Visitor Information Center to guide you in the right direction, as well as several lodging reservation services in Fredericksburg.

While the actual number remains somewhat of a mystery, there are more than 1,200 B&B, guesthouse and vacation rental units in Gillespie County. Many are historic homes which add to the nostalgic charm some travelers seek. Rest assured, Fredericksburg is known for its warm Texan hospitality, and that comes standard with every night’s stay, no matter where you choose to lay your head down. Find a full list of accommodations at VisitFredericksburgTX.com/lodging.

CHOOSE FROM:

- Hotels
- Motels
- B&Bs
- Guesthouses
- Inns
- Lodges
- Vacation Rentals
- Campgrounds
- RV Parks

The only thing more plentiful than the things to do in and around Fredericksburg is the abundant variety of places to stay.

lodging



See full list of accommodations at
VisitFredericksburgTX.com/lodging



SO FUN, YOU DON'T EVEN NEED A reason to celebrate

Get ready to enjoy some time with hundreds of your closest friends! With a festival or event just about every weekend, there's always something going on. Keep in mind, this listing isn't even the tip of the iceberg. There's music, food, art, flowers, nature, holidays, history ... events for every interest!

Spring is blooming with events: The spring months include fun events like the Hill Country Film Festival, LBJ 100 Bicycle Tour, and annual Crawfish Festival.

Summer is a hot time for fun: Our summer months include the Stonewall Peach Jamboree and Rodeo, Gillespie County Fair, Luckenbach Food Truck Festival, a myriad of July 4th festivities, grape stomps at several wineries and so much more.

Fall is a season of festivals: Of course, Oktoberfest is "the big one," but the fall season also brings the Fredericksburg Food & Wine Fest, the Mesquite Arts Festival and others.

Are you a Christmas Connoisseur? Then November/December is the time for you. German traditions, special seasonal events and timeless holiday décor abound for four weeks of festive holiday entertainment. Go ice skating. Marvel at our 30-foot Christmas tree and 26-foot German Christmas pyramid. Watch our lighted parade. Shop Main Street. Revel in Fredericksburg—the perfect Old World getaway.



Home to over 350 events throughout the year, there is always something happening around town.

festivals & events



See a full calendar at
VisitFredericksburgTX.com/events

THE BEST HOME BASE FOR daily exploration

Fredericksburg makes a great central location from which to explore other towns and cities in the Texas Hill Country region, a geographic area of rugged beauty along the Balcones Escarpment encompassing roughly 10,000 square miles. Here are a few suggestions for day trips from Fredericksburg:

Kerrville, Camp Verde, Bandera and Medina

Visit the Museum of Western Art, the YO Ranch, Stonehenge II, the headquarters of James Avery Craftsman and art galleries in the Kerrville area. Make a quick stop for lunch and shopping at Camp Verde on your way to Bandera, the Cowboy Capital of the World, where horseback riding and boot-scootin' to country western music are the order of the day and night. Then head to Medina to check out the local apple crop.



Comfort, Boerne, Sisterdale and Luckenbach

Shop for antiques in Comfort and don't miss the Treue der Union Monument, dedicated to the men from Comfort, Sisterdale, Fredericksburg and the surrounding area who were sympathetic to the Union cause and who died for their beliefs in the Battle of the Nueces in 1862. Boerne offers art galleries, dining and unique shopping in its historic district. Return to Fredericksburg from Boerne via 1376, stopping for the Sisterdale Dance Hall and Opera House or for a "cold one" at Luckenbach, where "Everybody's Somebody!"



Venture beyond Fredericksburg's city limits to experience authentic Texas Hill Country history, lakes, food, winemaking, music and more.

Hill Country Day Trips



Find more information at
VisitFredericksburgTX.com/texas-hill-country

Mason, Llano and Lake Buchanan

Take Highway 87 north to Mason, home to historic Fort Mason and the 1928 Odeon Theatre. Topaz, the state gem is found only in Mason County. Head east to Llano, known for its historic courthouse, barbecue restaurants, deer hunting and the Llano River. From Llano it is a short drive to impressive Lake Buchanan, covering over 23,000 acres. A thriving colony of bald eagles lives on the upper reaches of the lakeshore during the winter months.

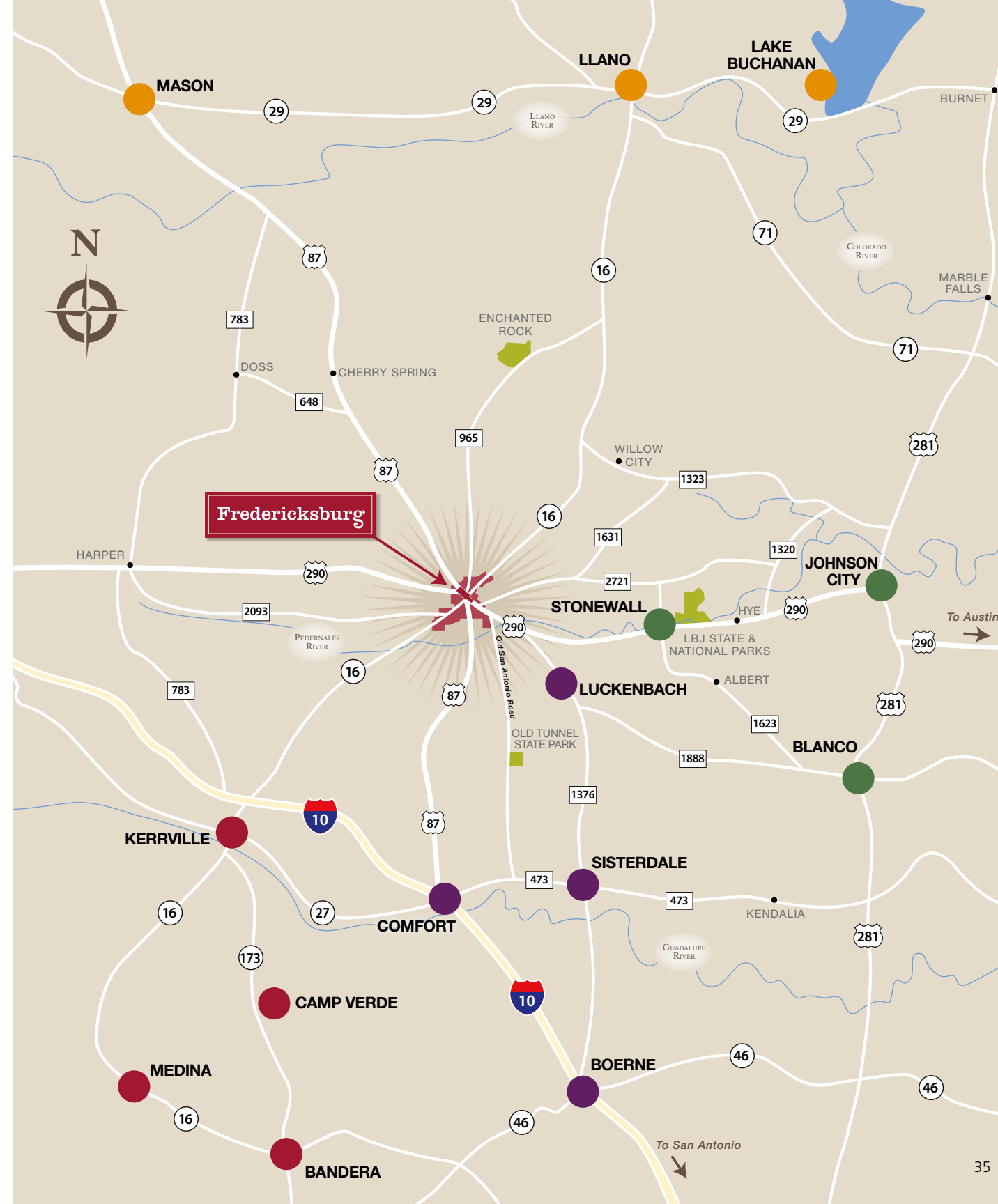


Stonewall, Johnson City and Blanco

Head east on Highway 290 and take in small town life in Stonewall, as well as the LBJ Ranch. Stonewall is famous for its peach crops and Peach JAMboree in June each year. In Johnson City, stop at the Visitor's Center for the LBJ National Historical Park and check out the Exotic Zoo and the Science Mill—great stops for families. In Blanco, park near the lovely old courthouse on the town square and check out the shops. Blanco State Park offers opportunities for picnics, fishing, swimming and tubing. Return from Blanco to Fredericksburg via FM Road 1623 for a scenic drive.



EXPLORE THE TEXAS HILL COUNTRY



Make your first stop
in town the Visitor
Information Center.
Brochures, maps and
local “know-it-alls” to
help plan your visit.



Fredericksburg visitor services

INFORMATION

16 VISITOR INFORMATION CENTER

The Visitor Information Center is located at 302 East Austin and is open seven days a week. Information on accommodations, events, maps and more is available. Free welcome DVD shown on request.

Mon–Sat 9AM to 5PM, Sun 11AM to 3PM

(830) 997-6523

VisitFredericksburgTX.com

PUBLIC RESTROOMS

Public restrooms are strategically located on the east end of downtown at the Visitor Information Center, 302 E. Austin, and in central downtown at the Marktplatz, on Main Street between Adams and Crockett Streets. On the west end of downtown, public restrooms are located in the Pioneer Museum at the corner of West Main and Milam Streets.

POLICE

Emergency – dial 911. Fredericksburg Police Department and Gillespie County Sheriff’s Department are located at 1601 E. Main Street. Business office telephone is (830) 997-7585.

HOSPITAL/ EMERGENCY ROOM

HCM IMMEDIATE CARE CLINIC

1031 S. State Hwy 16
(across from the hospital)
(830) 992-2820

HILL COUNTRY MEMORIAL HOSPITAL

1020 South Highway 16,
approx. 1.1 miles south
of Main Street.
(830) 997-4353
The emergency room is
open 24 hours.

WHEELCHAIR RENTALS

COMMUNITY MEDICAL SUPPLY

(830) 997-2609

FREDERICKSBURG MEDICAL EQUIPMENT

(830) 990-4775

GLORIOUS MEDICAL EQUIPMENT

(830) 456-1541

PHARMACIES

H-E-B PHARMACY

401 S. Adams St.
(830) 997-8809

HILL COUNTRY PHARMACY

501 E. Highway St.
(830) 307-9390

PRESCRIPTION LABORATORY

205 W. Windcrest St.
(830) 997-2163

VALU-MED PHARMACY

707 N. Llano St.
(830) 997-8155

WALGREENS

704 S. Adams
(830) 990-5089

WALMART PHARMACY

1435 E. Main St.
(830) 997-3047

GROCERY STORES

H-E-B

401 S. Adams St.
(830) 997-9950

NATURAL GROCERS

610 E. Main
(830) 733-9139

WALMART SUPERCENTER

1435 E. Main St.
(830) 997-2633

LOCAL TRANSPORTATION

ALAMO REGIONAL TRANSIT (ART)

(866) 889-7433

BLUEBONNET TAXI

(830) 998-2886

HILL COUNTRY PRIVATE CAR hpcctx.com

(830) 992-9416 or
(830) 990-0469

KIRCHMAN’S PRIVATE TRANSPORT

kirchmans-private-transport.
business.site/
(512) 757-2464

ROADRUNNER TAXI

(830) 456-3627

STAGECOACH SHUTTLE SERVICE

(830) 456-6891 or
(830) 385-7722

TOP DOG TAXI

(830) 992-7038

UBER (RIDE SHARING) uber.com

VINTAGE CAR SERVICE vintagecarservicefbg.com

(830) 202-1844

AUTO RENTALS

ENTERPRISE

1318 S. Highway 16
(830) 997-1745

BICYCLE RENTALS

HILL COUNTRY BICYCLE WORKS

702 E. Main St.
(830) 990-2609

JACK & ADAM’S BICYCLES

206 S. Lincoln
(830) 992-3008

ELECTRIC CAR CHARGING STATIONS

206 W. AUSTIN

Pay by cell phone with the “Liberty
HYDRA” App

PECAN GROVE STORE

5244 N. State Hwy 16
(830) 990-4433
Free for customers.

LOCAL RADIO

KFAN – 107.9 FM
Texas Rebel Radio
K-LOVE – 88.1 FM
Contemporary Christian
KNAF – 910 AM
Country/Local News
KNAF – 105.7 FM
Texas Country – The Deuce
KTXI – 90.1 FM
Texas Public Radio
Sun Radio – 106.9 FM
Solar Powered Roots Rock ‘n’ Roll

LOCAL NEWSPAPER

FREDERICKSBURG STANDARD RADIO POST

fredericksburgstandard.com
712 W. Main St.
(830) 997-2155
(published on Wednesdays)

BUS STATION

GREYHOUND BUS LINE

locations.greyhound.com/
bus-routes/all-destinations/
fredericksburg/tx
2204 S. State Hwy. 16
(inside the Stripes Shell Station)
(800) 231-2222 or (830) 997-3153
Purchase tickets online

AIRPORTS

Commercial airline service is available through the San Antonio (SAT) and Austin-Bergstrom (AUS) International Airports. Private aircraft may use the Gillespie County Airport, with auto access from Highway 16 South and FM 2093 (Tivydale Road). The Gillespie County Airport has a 5,000 foot lighted runway with 24-hour fuel service and full FBO service available.

1 GILLESPIE COUNTY AIRPORT (830) 990-5764

AUSTIN AIRPORT

(512) 530-2242

SAN ANTONIO AIRPORT

(210) 207-3411

TEXAS ROAD CONDITIONS

TEXAS DEPARTMENT OF
TRANSPORTATION
drivetexas.org
(800) 452-9292

LIBRARY

10 PIONEER MEMORIAL LIBRARY

115 W. Main St.
(830) 997-6513

POST OFFICE

12 POST OFFICE

(830) 997-3355
The Post Office is located on the west end of town at 150 N. US Highway 87 (Main Street). Full Service Hours: Mon–Fri 8:30AM to 4:30PM; Saturdays 9AM to Noon. Postal vending machines 24 hours a day.

NAILS, SPAS AND HEALTH CLUBS ABOVE AND BEYOND DAY SPA

419 W. Main St.
(830) 990-8413

ALLURE NAILS & SPA

1007 Hwy. 16 South
(830) 997-8888

ANGEL NAILS

410 S. Adams
(830) 990-2372

ANYTIME FITNESS

1406 E. Main St.
(830) 992-3713

BLESS YOUR SOLES REFLEXOLOGY

(307) 413-8868

BRILLIANCE BODYWORK

101A N. Orange
(830) 998-5400

EUROPEAN DAY SPA

402 Granite Ave.
(830) 997-5267

FREDERICKSBURG MASSAGE

1603 E. Main St.
(830) 997-6867

FREDSPA MASSAGE THERAPY

112 E. Austin
(830) 998-1537

HILL COUNTRY MEMORIAL HOSPITAL WELLNESS CENTER

1020 Highway 16 S.
(830) 997-1355

HILL COUNTRY MOBILE MASSAGE

(830) 307-0456

HOFFMAN HAUS DAY SPA

608 E. Creek Street
(830) 997-6739

NATURAL NAILS AND SPA

1426 E. Main
(830) 990-2222

NATURE’S SPA AT FREDERICKSBURG HERB FARM

405 Whitney St.
(830) 997-8615
(800) 259-HERB (Toll-free)

PRICKLY PEAR SPA

108 E. Trailmoor, Suite 10
(830) 998-2913

ROOTOLOGY

1102 N. Llano, Suite B
(512) 618-2731

SERENITY DAY SPA

1202 W. Austin, Suite 400
(830) 990-1126

SOLAR NAILS

204 S Adams
(830) 992-2939

THE SPA AT THE INN ON BARON’S CREEK

304 S. Washington
(830) 990-9202

TATYANA’S TOUCH

313 E. Highway St.
(830) 456-2019

US NAILS







1425 E. Main
(830) 997-4411

VITALITE MED SPA

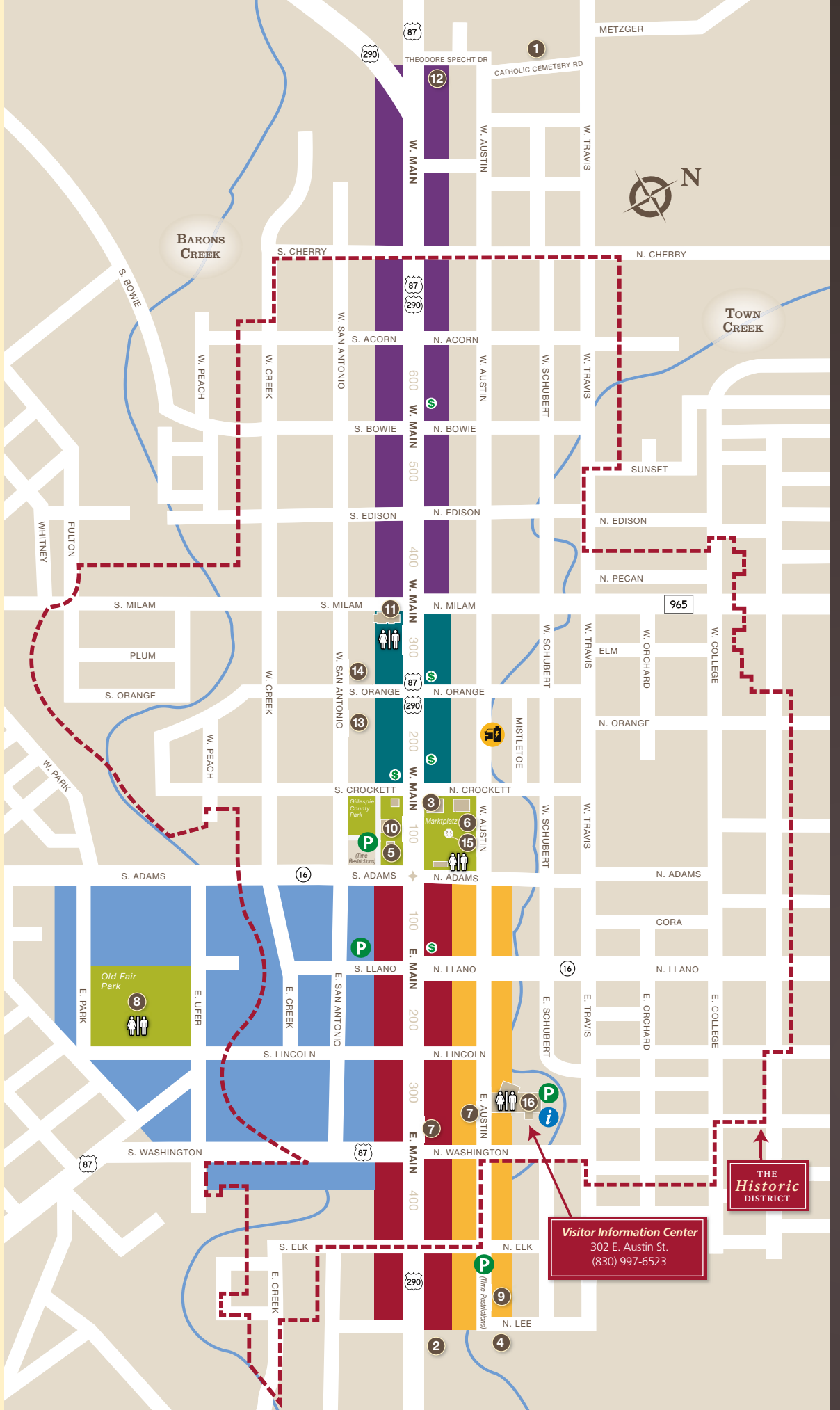
409 E. Main
(830) 383-0725

- 1 Catholic Cemetery
- 2 Christian Methodist Episcopal Church
- 3 City Hall and Fire Station
- 4 Der Stadt Friedhof Cemetery
- 5 Gillespie County Courthouse
- 6 Marktplatz
(Maibaum & playground) 
- 7 National Museum of the Pacific War
- 8 Old Fair Park
(Skate park & basketball pavillion) 
- 9 Pacific Combat Zone
- 10 Pioneer Memorial Public Library
- 11 Pioneer Museum Complex 
- 12 Post Office
- 13 St. Joseph's Halle
- 14 St. Mary's Catholic Church/
Marienkirche
- 15 Vereins Kirche Museum
- 16 Visitor Information Center
(Free public parking lot)
Bus and RV day parking



Legend

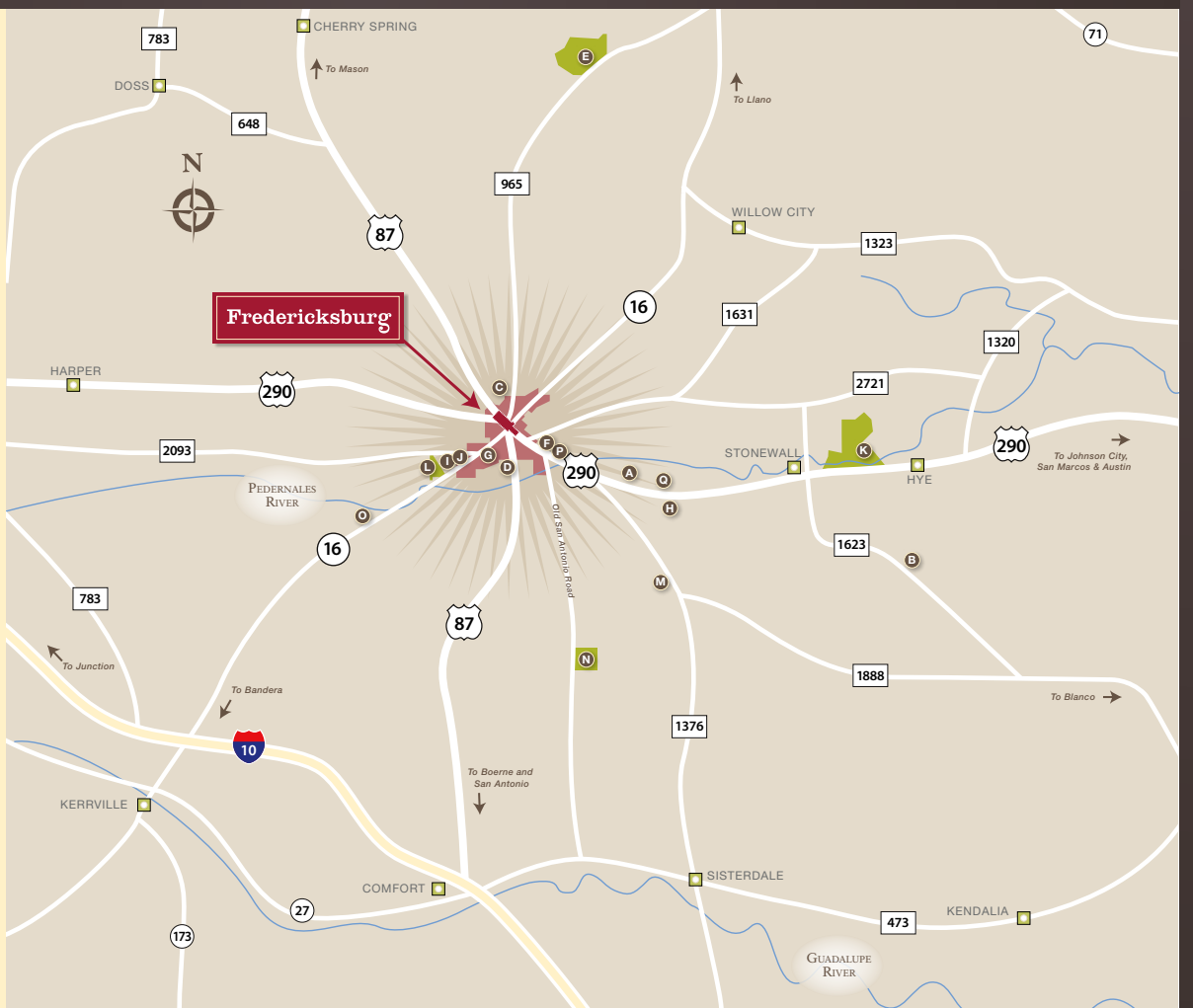
-  Public Parking
-  Visitor Information
-  Public Restrooms
-  Historic District
-  ATM
-  Electric Car Charging Station

-  Parks / Green Space
-  East Main Street
-  West Main Arts & Entertainment
-  West Main Street
-  Warehouse District
-  East Austin District



- A** Altstadt Brewery
- B** Albert Dance Hall
- C** Cross Mountain
- D** Das Peach Haus
- E** Enchanted Rock State Natural Area
- F** Fort Martin Scott
- G** Fredericksburg High School / Auditorium
- H** Fredericksburg Trade Days
- I** Gillespie County Airport
- J** Gillespie County Fairgrounds
- K** LBJ State & National Historical Parks
(LBJ Ranch and Texas White House, Sauer-Beckmann Living History Farm, nature trail, pool, tennis courts, baseball fields, group facilities)
- L** Lady Bird Johnson Municipal Park
(Golf Course, nature trail, playground, pool, tennis courts, picnic areas, RV sites, tent camping & Pioneer Pavilion)
- M** Luckenbach Texas
- N** Old Tunnel State Park
- O** Street Dreams
- P** Texas Rangers Heritage Center
at Fort Martin Scott
- Q** Wildseed Farms

-  Fredericksburg Historic District
 Town  Park



Fredericksburg Urban Wine Trail

Note: These facilities have a winery “G” permit from the Texas Alcoholic Beverage Commission.

- A Andreucci Wineroom
- B Becker Vineyards On Main*
- C Cross Mountain Vineyards
- D Fat Ass Ranch & Winery on Main*
- E Fiesta Winery Fredericksburg*
- F Fredericksburg Winery
- G Grape Creek Vineyards on Main*
- H Lost Draw Cellars
- I Narrow Path Winery*
- J Pontotoc Vineyard Weingarten
- K Vintners Hideaway

*These wineries have a location on the Urban Wine Trail as well as outside of Fredericksburg. See map below.

Legend

- P Public Parking
- i Visitor Information
- Public Restrooms
- Historic District
- ATM
- Electric Car Charging Station

Enjoy responsibly. See transportation services on pages 27 and 37.

Winery Locations (Fredericksburg to Johnson City)

Note: These facilities have a winery “G” permit from the Texas Alcoholic Beverage Commission.

- 1 Ab Astris Winery
- 2 Adega Vinho Winery
- 3 Alexander Vineyards
- 4 Arrowhead Creek Vineyard
- 5 Augusta Vin Winery
- 6 Barons Creek Vineyards
- 7 Becker Vineyards*
- 8 Bell Mountain Vineyards
- 9 Bingham Family Vineyards
- 10 Carter Creek Winery Resort & Spa
- 11 Chisholm Trail Winery
- 12 Cicada Cellars
- 13 Fat Ass Ranch & Winery*
- 14 Fiesta Winery 290*
- 15 Grape Creek Vineyards*
- 16 Heath Sparkling Wines
- 17 Hilmy Cellars
- 18 Hye Meadow Winery
- 19 Inwood Estates Winery and Bistro
- 20 Kalasi Cellars
- 21 Kuhlman Cellars
- 22 Longhorn Cellars
- 23 Los Pinos Ranch Vineyards
- 24 Mendelbaum Cellars
- 25 Messina Hof Hill Country Winery
- 26 Narrow Path Winery & Vineyard*
- 27 Pedernales Cellars
- 28 Ron Yates Wine
- 29 Safari Winery
- 30 Santamaria Cellars
- 31 Signor Vineyards
- 32 Six Shooter Cellars
- 33 Slate Mill Wine Collective
- 34 Southold Farm & Cellar
- 35 Texas Heritage Vineyard
- 36 Texas Hills Vineyard
- 37 Texas Wine Collective (formerly 4.0 Cellars)
- 38 The Wine Garage
- 39 Wedding Oak Winery
- 40 William Chris Vineyards
- 41 Woodrose Winery

*These wineries also have a location on the Urban Wine Trail.



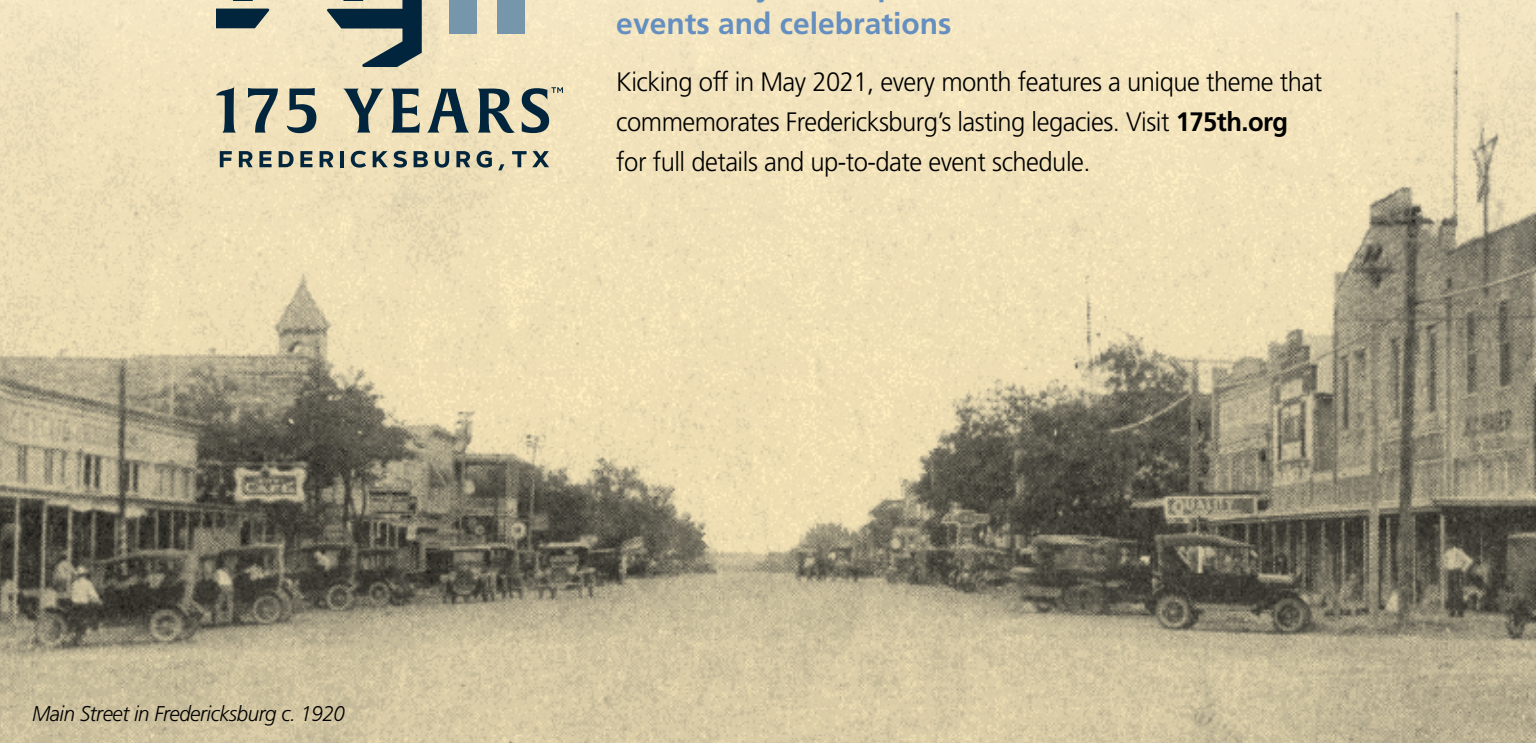


Save the Year!

MAY 2021 through MAY 2022

An entire year of special
events and celebrations

Kicking off in May 2021, every month features a unique theme that commemorates Fredericksburg's lasting legacies. Visit **175th.org** for full details and up-to-date event schedule.



Main Street in Fredericksburg c. 1920



Fredericksburg

THE TEXAS HILL COUNTRY

Texas Heart. German Soul.

Visit FredericksburgTX.com