



**BROWARD COUNTY
CONVENTION CENTER**

— GREATER FORT LAUDERDALE —



PROPOSAL FOR

**AMC theater
Jan 2024**

PLEASE NOTE: ALL PICTURES AND RENDERINGS INCLUDED IN THIS DOCUMENT ARE SUBJECT TO CHANGE AT ANYTIME

Created by Dafne Anderson

954.765.5903

danderson@ftlauderdalecc.com

This proposal is valid until Sept 8th, 2021



AREA

Located minutes from Fort Lauderdale's famed Blue Wave Beaches

Adjacent to Broward County's Port Everglades

Five-minute drive from the Fort Lauderdale / Hollywood International Airport

Proximity to local dining and shopping

CERTIFIED LEED BUILDING

- ▶ LEED for Existing Buildings Gold-certified facility. Eco-friendly Design and Operation



ADA ACCESSIBLE FACILITY

- ▶ Ramp access, restroom facilities, braille elevator buttons, automatic door opener
- ▶ Evacuation chairs available



EXPANSION HIGHLIGHTS UPON COMPLETION OF PHASE 1:

- ▶ 350,000 sq. ft. of contiguous space
- ▶ More than 60,000 sq. ft. in 3 elegant ballrooms
- ▶ Second and third floor flexible meeting space
- ▶ New and modern pre-function space
- ▶ 1,800+ parking spaces
- ▶ Outdoor waterfront plaza
- ▶ State-of-the-art technology



Garage parking with covered skywalks to Convention Center



View of the Atrium Lobby

Construction Schedule*:

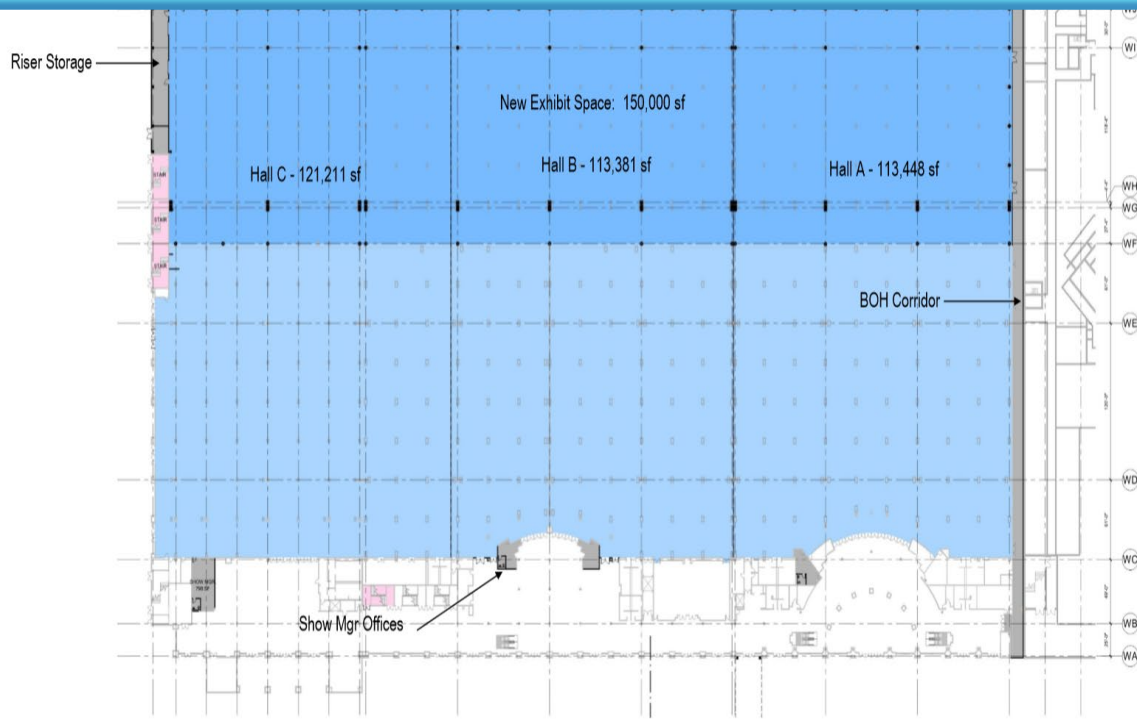
-Phase 1: West Expansion
October 2021

Phase 2 & 3: East Expansion Q2,
Headquarter Hotel & Outdoor
Event Space

***Schedule subjects to change at
anytime**



Aerial View

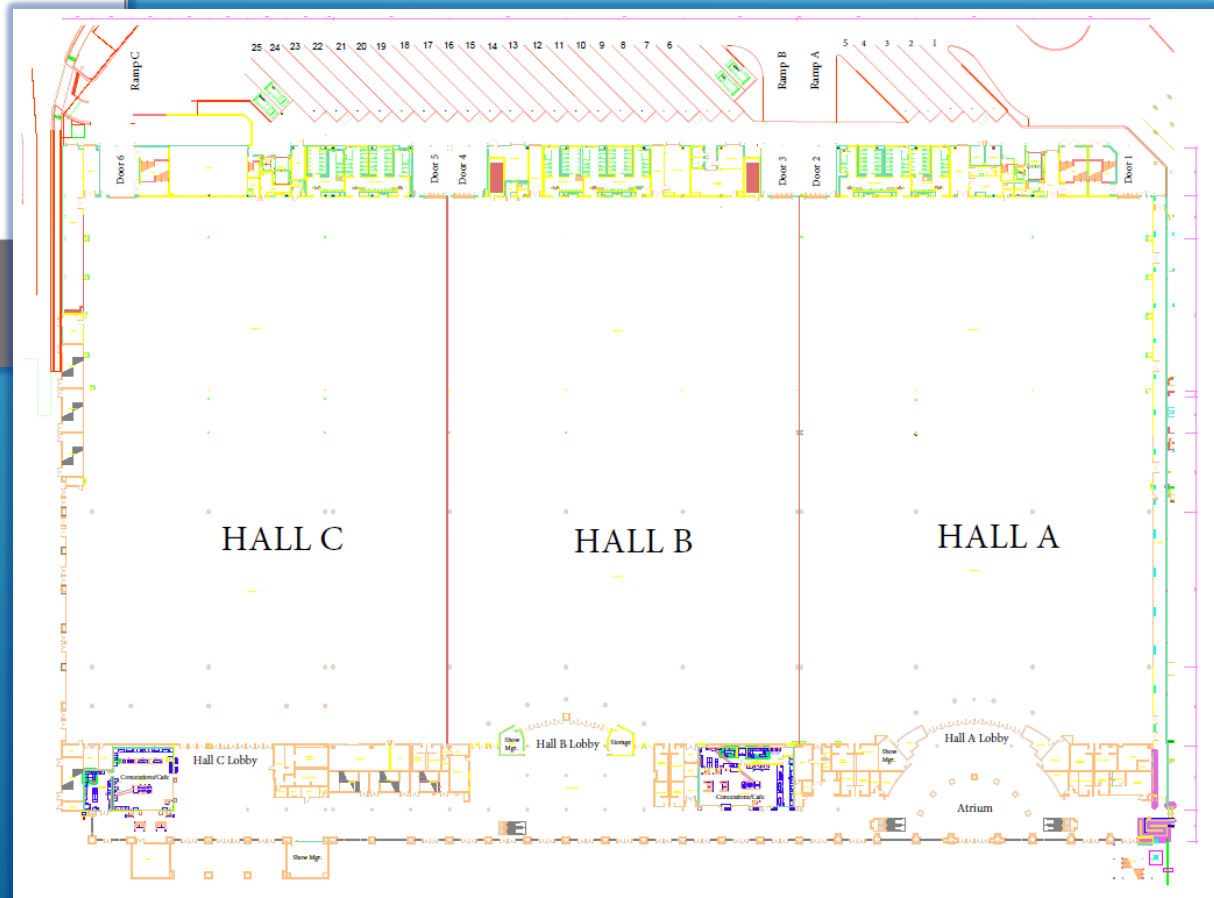


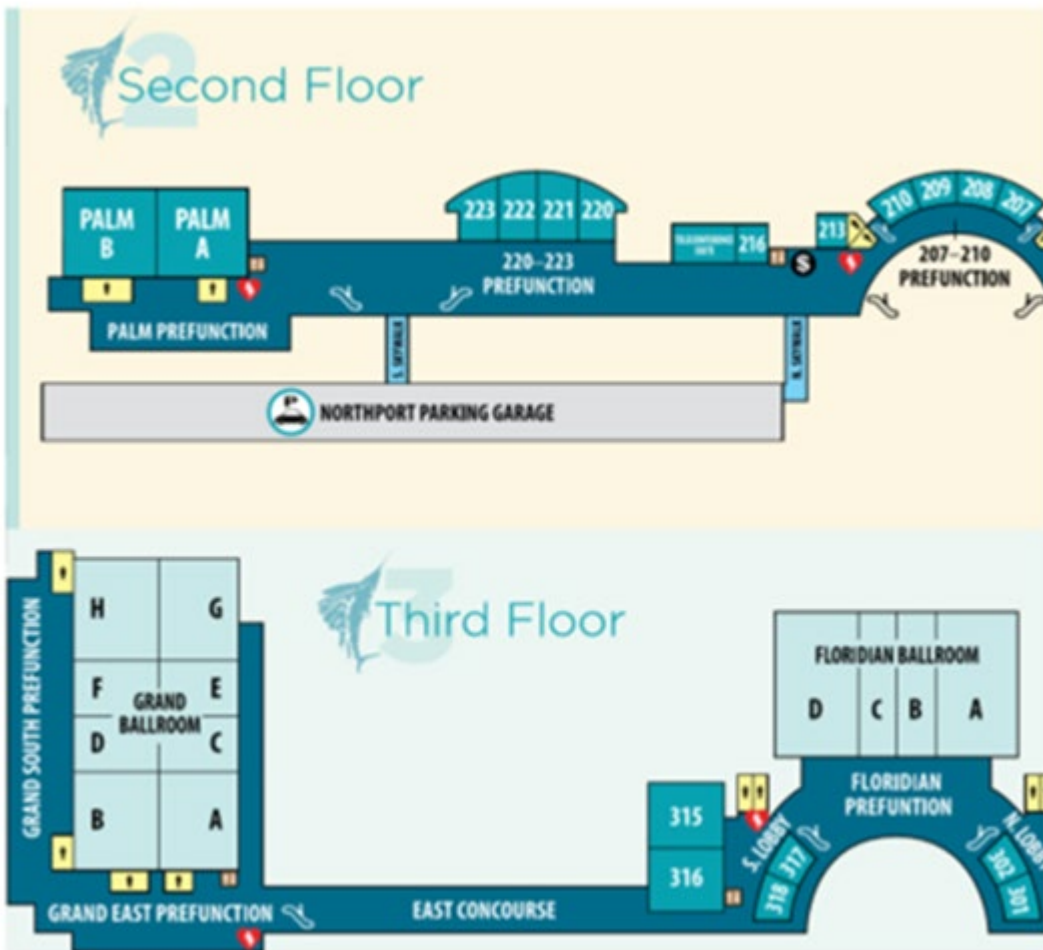
West Expansion: First Floor

BROWARD COUNTY CONVENTION CENTER EXPANSION & HEADQUARTERS HOTEL | FORT LAUDERDALE, FLORIDA
MATTHEWS SOUTHWEST | BALFOUR BEATTY | STANTEC | FENTRESS ARCHITECTS | NUNZIO MARC DESANTIS ARCHITECTS

- ▶ Equipment Portable performance stage, full dance floors, risers in a variety of heights, and elevated riser seating system
- ▶ Water/Compressed Air Full service available in exhibit halls at columns.
- ▶ 25 Easily accessible loading docks

EXISTING AND UPGRADES:





...

- ▶ Electrical Service 120/208-volt, 100-amp, 3-phase, 4-wire with ground, quick-connects in floor boxes located on 30' x 30' centers. 277/480-volt, 3-phase service available from exhibit hall ceiling.
- ▶ Upgraded Furnishings and Décor
- ▶ State of Art Technology
- ▶ Enhanced Pre-Function Space
- ▶ Upgraded Restroom Facilities
- ▶ Internet/Telecom Event network design assistance available (individual LAN's and VPN's connect floor-to-floor, room-to-room and booth-to-booth)
- ▶ ADA Accessible Ramp Access, and automatic door openers

SOUTH FLORIDA'S PREMIER WATERFRONT CONVENTION CENTER



WEST BUILDING:	Sq Ft	Dimensions	Theater	Classroom	Reception	Banquet	10x10 Exh	
Grand Ballroom	31,639	245'x130'	3,512	2,208	3,164	2,632	158	3rd Floor
Grand Ballroom A	4,862	78'x62'	530	336	486	300	24	
Grand Ballroom B	5,252	78'x67'	540	336	525	330	26	
Grand Ballroom C	2,701	43'x62'	300	216	270	150	14	
Grand Ballroom D	2,918	43'x67'	324	216	292	150	15	
Grand Ballroom E	2,701	43'x62'	300	216	270	150	14	
Grand Ballroom F	2,918	43'x67'	324	216	292	150	15	
Grand Ballroom G	4,945	79'x62'	540	336	495	330	25	
Grand Ballroom H	5,342	79'x67'	550	346	534	440	27	
Floridian Ballroom	20,316	190'x112'	2,100	1,380	2,032	1,160	106	
Floridian A	6,798	65'x112'	700	465	680	560	34	
Floridian B	3,360	30'x112'	365	225	336	250	17	
Floridian C	3,360	30'x112'	365	225	336	250	17	
Floridian D	6,798	65'x112'	700	465	680	560	34	
Room 301 / 302	1,890	63'x30'	144	117	189	120	x	
Room 301	990	33'x30'	72	54	99	60	x	
Room 302	900	30'x30'	87	54	90	60	x	
Room 315 / 316	5,841	99'x59'	620	396	584	400	25	
Room 315	2,891	49'x59'	298	174	289	180	x	
Room 316	2,950	50'x59'	314	192	295	200	x	
Room 317 / 318	1,890	63'x30'	144	117	189	120	x	
Room 317	900	30'x30'	87	54	90	60	x	
Room 318	990	33'x30'	72	54	100	60	x	
Room 203 / 204	1,196	44'x27'	121	75	119	80	x	2nd Floor
Room 203	598	22'x27'	53	36	60	40	x	
Room 204	598	22'x27'	55	42	30	42	x	
Room 207 / 208	1,512	63'x24'	160	114	151	110	x	
Room 207	672	28'x24'	73	45	67	40	x	
Room 208	840	35'x24'	98	60	84	60	x	
Room 209 / 210	1,512	63'x24'	160	114	151	110	x	
Room 209	840	35'x24'	98	60	84	60	x	
Room 210	672	28'x24'	73	45	67	40	x	
Room 213	572	22'x26'	66	39	57	40	x	
Room 216	644	23'x28'	70	45	64	40	x	
Teleconference Suite	1,297	46'x28'	110	57	130	70	x	
Room 220 / 221	2,755	95'x29'	280	171	276	180	x	
Room 220	1,247	43'x29'	107	66	125	80	x	
Room 221	1,508	52'x29'	133	84	151	110	x	
Room 222 / 223	2,755	95'x29'	280	171	276	180	x	
Room 222	1,508	52'x29'	133	84	151	110	x	
Room 223	1,247	43'x29'	107	66	125	80	x	
Palm Ballroom	9,313	139'x67'	1,110	837	931	600	47	
Palm A	4,556	68'x67'	540	420	456	300	23	
Palm B	4,757	71'x67'	540	420	476	300	24	
Exhibit Hall	348,040	425'x 821'			23,472		1,723	1st Floor
Exhibit Hall A	113,448	425'x269'			7,160		567	
Exhibit Hall B	113,381	425'x272'			7,572		576	
Exhibit Hall C	121,211	425'x280'			8,740		580	

SPACE UTILIZATION OVERVIEW

March 22-27, 2024

Meeting Rental does not include 7% tax

Account Name	Space	Location
AMC Theater	Office	216
AMC Theater	Storage	317/318
AMC Theater	Attendee Office	213
AMC Theater		216
AMC Theater		317/318
AMC Theater	CEO Office	Conference Suite
AMC Theater	Exhibit	Floridian ABCD
AMC Theater	GS	Grand ABCDEF
AMC Theater	Hospitality	Palm A/B
AMC Theater	Same	213
AMC Theater	Same	216
AMC Theater	Breakout 1 & 2	220/221
AMC Theater	Breakout 3 & 4	222/223
AMC Theater	Same	317/318
AMC Theater	Same	Conference Suite
AMC Theater	Same	Floridian ABCD
AMC Theater	Same	Grand ABCDEF
AMC Theater	F&B	Grand GH
AMC Theater	Same	Palm A/B
AMC Theater	Same	213
AMC Theater	Same	216
AMC Theater	Same	220/221
AMC Theater	Same	222/223
AMC Theater	Same	317/318
AMC Theater	Same	Conference Suite
AMC Theater	Same	Floridian ABCD
AMC Theater	Same	Grand ABCDEF
AMC Theater	Same	Grand GH
AMC Theater	Same	Palm A/B
AMC Theater	Same	213
AMC Theater	Same	216
AMC Theater	Same	220/221
AMC Theater	Same	222/223
AMC Theater	Same	317/318
AMC Theater	Same	Conference Suite
AMC Theater	Same	Floridian ABCD
AMC Theater	Same	Grand ABCDEF
AMC Theater	Same	Grand GH
AMC Theater	Same	Palm A/B
AMC Theater	Same	213
AMC Theater	Same	216
AMC Theater	Same	220/221
AMC Theater	Same	222/223
AMC Theater	Same	317/318
AMC Theater	Same	Conference Suite
AMC Theater	Same	Floridian ABCD
AMC Theater	Same	Grand ABCDEF
AMC Theater	Same	Grand GH
AMC Theater	Same	Palm A/B

MEETING ROOM RENTAL

- **MEETING ROOM RENTAL:**

WAIVED

() Discount will apply provided that a food and beverage minimum of \$400,000.00 (exclusive of tax and service charge) is purchased in catering.*

CONVENTION CENTER INCENTIVES:



The Greater Fort Lauderdale Broward County Convention Center is pleased to offer the following Special Concessions:

Waived rooms rental
with F&B minimum

Discount on AV and
Internet Negotiable



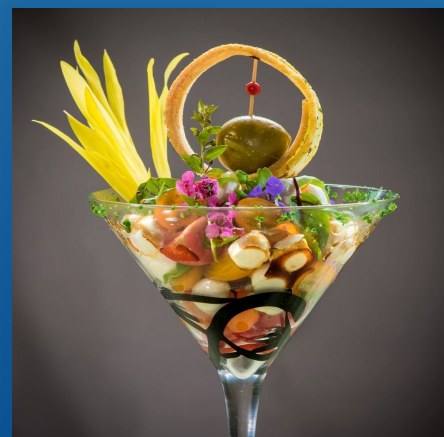


HOSPITALITY, COMMUNITY, TASTE...

Savor's mission is to enrich visitor experience, building upon your vision through food – listening, learning, growing, harvesting, cooking and breaking bread together.



SAVOR...





COMMITMENT TO SAFETY

- ▶ The newly expanded Greater Fort Lauderdale/Broward County Convention Center has been designed with ASM Global's *VenueShield* protocol to provide the highest levels of cleanliness and safety while inspiring the confidence of planners and attendees, all in partnership with leading medical professionals, industry experts and public health officials.



BROWARD COUNTY
**CONVENTION
CENTER** | GREATER FORT
LAUDERDALE



**BROWARD COUNTY
CONVENTION CENTER**

— GREATER FORT LAUDERDALE —



PROPOSAL FOR

**AMC theater
Jan 2025**

PLEASE NOTE: ALL PICTURES AND RENDERINGS INCLUDED IN THIS DOCUMENT ARE SUBJECT TO CHANGE AT ANYTIME

Created by Dafne Anderson

954.765.5903

danderson@ftlauderdalecc.com

This proposal is valid until Sept 8th, 2021



AREA

Located minutes from Fort Lauderdale's famed Blue Wave Beaches

Adjacent to Broward County's Port Everglades

Five-minute drive from the Fort Lauderdale / Hollywood International Airport

Proximity to local dining and shopping

CERTIFIED LEED BUILDING

- ▶ LEED for Existing Buildings Gold-certified facility. Eco-friendly Design and Operation



ADA ACCESSIBLE FACILITY

- ▶ Ramp access, restroom facilities, braille elevator buttons, automatic door opener
- ▶ Evacuation chairs available



EXPANSION HIGHLIGHTS UPON COMPLETION OF PHASE 1:

- ▶ 350,000 sq. ft. of contiguous space
- ▶ More than 60,000 sq. ft. in 3 elegant ballrooms
- ▶ Second and third floor flexible meeting space
- ▶ New and modern pre-function space
- ▶ 1,800+ parking spaces
- ▶ Outdoor waterfront plaza
- ▶ State-of-the-art technology



Garage parking with covered skywalks to Convention Center



View of the Atrium Lobby

Construction Schedule*:

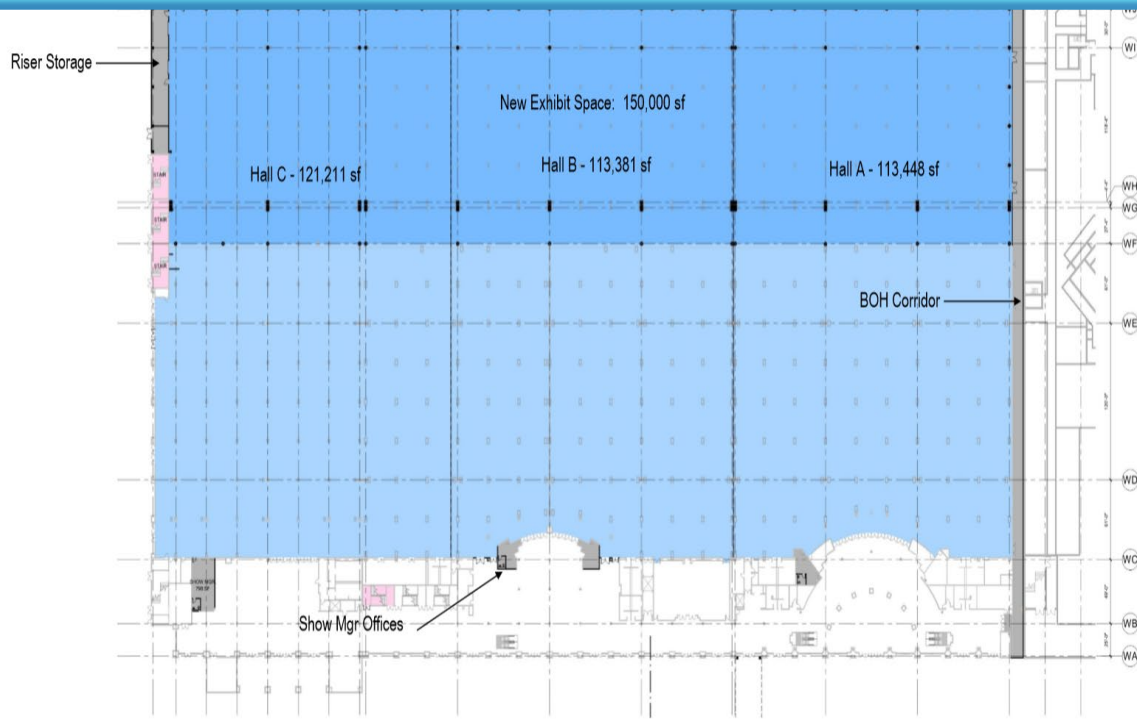
-Phase 1: West Expansion
October 2021

Phase 2 & 3: East Expansion Q2,
Headquarter Hotel & Outdoor
Event Space

***Schedule subjects to change at
anytime**



Aerial View

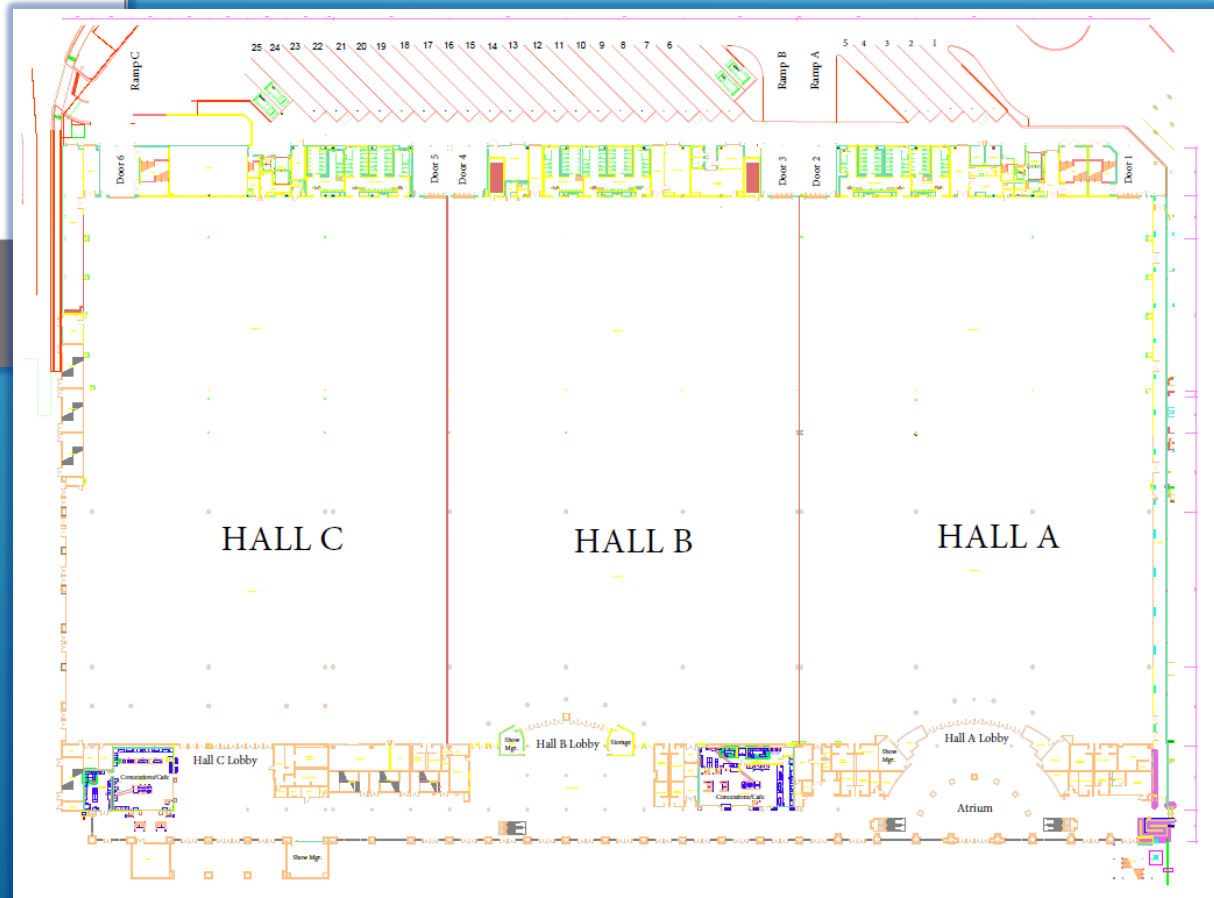


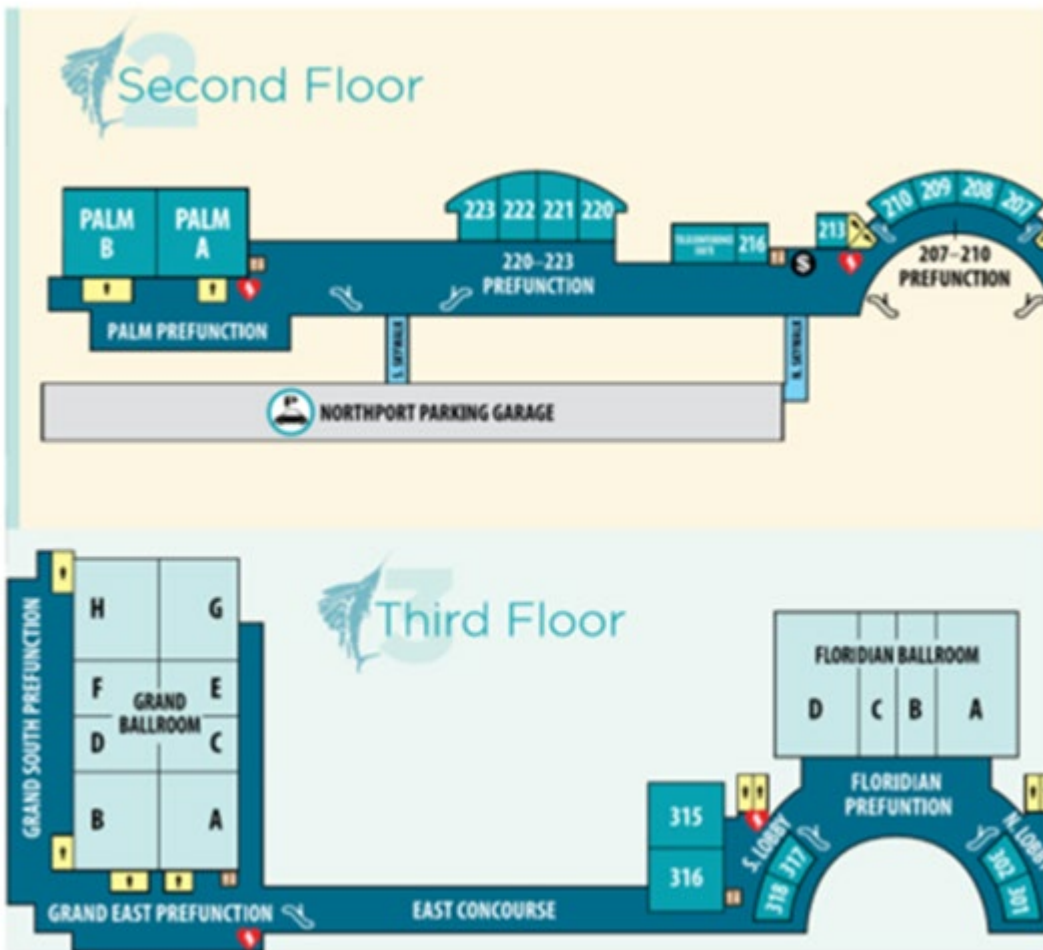
West Expansion: First Floor

BROWARD COUNTY CONVENTION CENTER EXPANSION & HEADQUARTERS HOTEL | FORT LAUDERDALE, FLORIDA
MATTHEWS SOUTHWEST | BALFOUR BEATTY | STANTEC | FENTRESS ARCHITECTS | NUNZIO MARC DESANTIS ARCHITECTS

- ▶ Equipment Portable performance stage, full dance floors, risers in a variety of heights, and elevated riser seating system
- ▶ Water/Compressed Air Full service available in exhibit halls at columns.
- ▶ 25 Easily accessible loading docks

EXISTING AND UPGRADES:





...

- ▶ Electrical Service 120/208-volt, 100-amp, 3-phase, 4-wire with ground, quick-connects in floor boxes located on 30' x 30' centers. 277/480-volt, 3-phase service available from exhibit hall ceiling.
- ▶ Upgraded Furnishings and Décor
- ▶ State of Art Technology
- ▶ Enhanced Pre-Function Space
- ▶ Upgraded Restroom Facilities
- ▶ Internet/Telecom Event network design assistance available (individual LAN's and VPN's connect floor-to-floor, room-to-room and booth-to-booth)
- ▶ ADA Accessible Ramp Access, and automatic door openers

SOUTH FLORIDA'S PREMIER WATERFRONT CONVENTION CENTER



WEST BUILDING:	Sq Ft	Dimensions	Theater	Classroom	Reception	Banquet	10x10 Exh	
Grand Ballroom	31,639	245'x130'	3,512	2,208	3,164	2,632	158	3rd Floor
Grand Ballroom A	4,862	78'x62'	530	336	486	300	24	
Grand Ballroom B	5,252	78'x67'	540	336	525	330	26	
Grand Ballroom C	2,701	43'x62'	300	216	270	150	14	
Grand Ballroom D	2,918	43'x67'	324	216	292	150	15	
Grand Ballroom E	2,701	43'x62'	300	216	270	150	14	
Grand Ballroom F	2,918	43'x67'	324	216	292	150	15	
Grand Ballroom G	4,945	79'x62'	540	336	495	330	25	
Grand Ballroom H	5,342	79'x67'	550	346	534	440	27	
Floridian Ballroom	20,316	190'x112'	2,100	1,380	2,032	1,160	106	
Floridian A	6,798	65'x112'	700	465	680	560	34	
Floridian B	3,360	30'x112'	365	225	336	250	17	
Floridian C	3,360	30'x112'	365	225	336	250	17	
Floridian D	6,798	65'x112'	700	465	680	560	34	
Room 301 / 302	1,890	63'x30'	144	117	189	120	x	
Room 301	990	33'x30'	72	54	99	60	x	
Room 302	900	30'x30'	87	54	90	60	x	
Room 315 / 316	5,841	99'x59'	620	396	584	400	25	
Room 315	2,891	49'x59'	298	174	289	180	x	
Room 316	2,950	50'x59'	314	192	295	200	x	
Room 317 / 318	1,890	63'x30'	144	117	189	120	x	
Room 317	900	30'x30'	87	54	90	60	x	
Room 318	990	33'x30'	72	54	100	60	x	
Room 203 / 204	1,196	44'x27'	121	75	119	80	x	2nd Floor
Room 203	598	22'x27'	53	36	60	40	x	
Room 204	598	22'x27'	55	42	30	42	x	
Room 207 / 208	1,512	63'x24'	160	114	151	110	x	
Room 207	672	28'x24'	73	45	67	40	x	
Room 208	840	35'x24'	98	60	84	60	x	
Room 209 / 210	1,512	63'x24'	160	114	151	110	x	
Room 209	840	35'x24'	98	60	84	60	x	
Room 210	672	28'x24'	73	45	67	40	x	
Room 213	572	22'x26'	66	39	57	40	x	
Room 216	644	23'x28'	70	45	64	40	x	
Teleconference Suite	1,297	46'x28'	110	57	130	70	x	
Room 220 / 221	2,755	95'x29'	280	171	276	180	x	
Room 220	1,247	43'x29'	107	66	125	80	x	
Room 221	1,508	52'x29'	133	84	151	110	x	
Room 222 / 223	2,755	95'x29'	280	171	276	180	x	
Room 222	1,508	52'x29'	133	84	151	110	x	
Room 223	1,247	43'x29'	107	66	125	80	x	
Palm Ballroom	9,313	139'x67'	1,110	837	931	600	47	
Palm A	4,556	68'x67'	540	420	456	300	23	
Palm B	4,757	71'x67'	540	420	476	300	24	
Exhibit Hall	348,040	425'x 821'			23,472		1,723	1st Floor
Exhibit Hall A	113,448	425'x269'			7,160		567	
Exhibit Hall B	113,381	425'x272'			7,572		576	
Exhibit Hall C	121,211	425'x280'			8,740		580	

SPACE UTILIZATION OVERVIEW

Feb 28-March 5,
2025

Meeting Rental does not include 7% tax

Account Name	Space	Location
AMC Theater	Office	216
AMC Theater	Storage	317/318
AMC Theater	Attendee Office	213
AMC Theater		216
AMC Theater		317/318
AMC Theater	CEO Office	Conference Suite
AMC Theater	Exhibit	Floridian ABCD
AMC Theater	GS	Grand ABCDEF
AMC Theater	Hospitality	Palm A/B
AMC Theater	Same	213
AMC Theater	Same	216
AMC Theater	Breakout 1 & 2	220/221
AMC Theater	Breakout 3 & 4	222/223
AMC Theater	Same	317/318
AMC Theater	Same	Conference Suite
AMC Theater	Same	Floridian ABCD
AMC Theater	Same	Grand ABCDEF
AMC Theater	F&B	Grand GH
AMC Theater	Same	Palm A/B
AMC Theater	Same	213
AMC Theater	Same	216
AMC Theater	Same	220/221
AMC Theater	Same	222/223
AMC Theater	Same	317/318
AMC Theater	Same	Conference Suite
AMC Theater	Same	Floridian ABCD
AMC Theater	Same	Grand ABCDEF
AMC Theater	Same	Grand GH
AMC Theater	Same	Palm A/B
AMC Theater	Same	213
AMC Theater	Same	216
AMC Theater	Same	220/221
AMC Theater	Same	222/223
AMC Theater	Same	317/318
AMC Theater	Same	Conference Suite
AMC Theater	Same	Floridian ABCD
AMC Theater	Same	Grand ABCDEF
AMC Theater	Same	Grand GH
AMC Theater	Same	Palm A/B
AMC Theater	Same	213
AMC Theater	Same	216
AMC Theater	Same	220/221
AMC Theater	Same	222/223
AMC Theater	Same	317/318
AMC Theater	Same	Conference Suite
AMC Theater	Same	Floridian ABCD
AMC Theater	Same	Grand ABCDEF
AMC Theater	Same	Grand GH
AMC Theater	Same	Palm A/B

MEETING ROOM RENTAL

- **MEETING ROOM RENTAL:**

WAIVED

() Discount will apply provided that a food and beverage minimum of \$400,000.00 (exclusive of tax and service charge) is purchased in catering.*

CONVENTION CENTER INCENTIVES:



The Greater Fort Lauderdale Broward County Convention Center is pleased to offer the following Special Concessions:

Waived rooms rental
with F&B minimum

Discount on AV and
Internet Negotiable



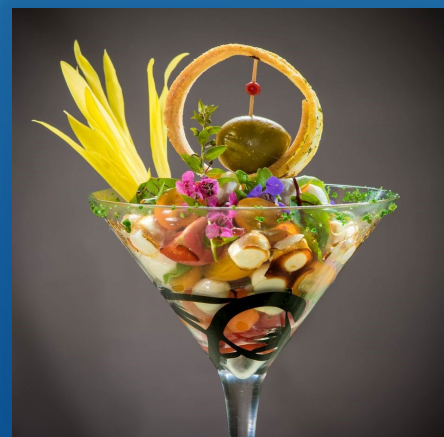


HOSPITALITY, COMMUNITY, TASTE...

Savor's mission is to enrich visitor experience, building upon your vision through food – listening, learning, growing, harvesting, cooking and breaking bread together.



SAVOR...





COMMITMENT TO SAFETY

- ▶ The newly expanded Greater Fort Lauderdale/Broward County Convention Center has been designed with ASM Global's *VenueShield* protocol to provide the highest levels of cleanliness and safety while inspiring the confidence of planners and attendees, all in partnership with leading medical professionals, industry experts and public health officials.



BROWARD COUNTY
**CONVENTION
CENTER** | GREATER FORT
LAUDERDALE