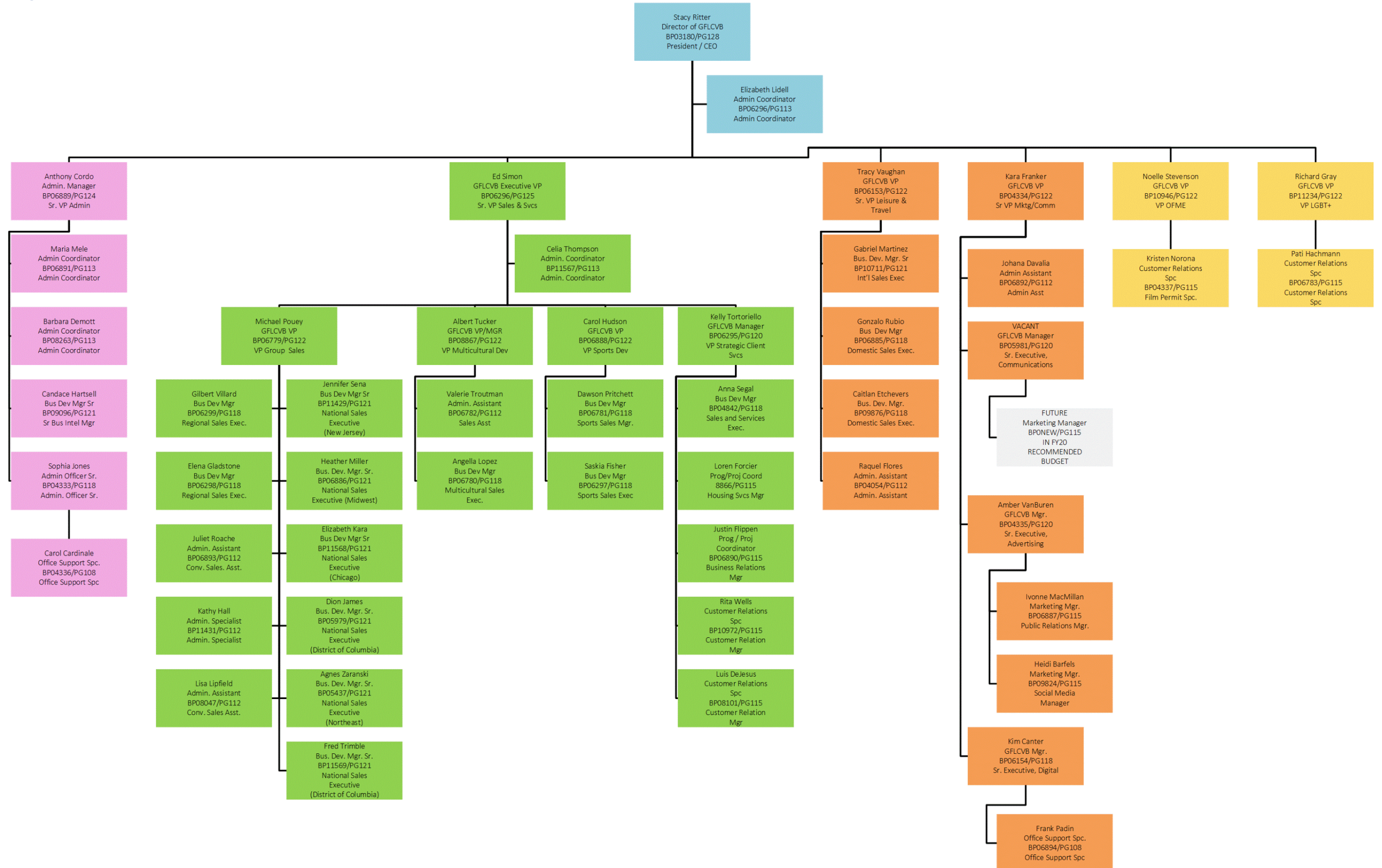


Contents

Organizational chart.....	2
Budget overview	3
Personnel changes and supplemental requests for funding	3
Group and Tourism Sponsorships	4
Tradeshows and partnerships.....	5
Memberships	7
Organization budget	8
Budget distribution by section.....	9
Administration (and research) operating expenses	10
Executive operating expenses.....	11
LGBT operating expenses.....	12
Underground operating expenses	13
Tourism Sales operating expenses.....	15
Marketing Communications operating expenses	18
Convention Group Sales operating expenses	19
Multicultural Sales operating expenses.....	23
Sports Sales operating expenses.....	24
Strategic Client Services operating expenses	27

Organizational chart



Budget overview

	FY18 Actual	FY19 Budget	FY20 Budget	Percent Change FY19-20	Positions FY19	Positions FY20
Convention Center and Visitors Bureau	\$25,898,739	\$35,258,050	\$36,475,940	3%	51	53
Convention Center	\$12,975,950	\$18,612,640	\$18,044,730	(3)%	1	0 (xfer to CVB)

Personnel changes and supplemental requests for funding

- Personnel
 - Marketing and Communications utilizes two additional positions for communications and creative production.
 - transfer vacant position from Convention Center budget (GFLCVB Manager) (completed in FY2019).
 - addition of one new position (Marketing Manager).
- Research and Data
 - \$300,000.00
 - visitor profile quarterly report. Volume, demographics, economics, forecasting, etc.
 - return on investment study. Reviews return on investment from efforts to give better direction to future spending.
- Places of Interest and Event Investment
 - \$500,000.00
- LGBTQ+
 - \$250,000.00
 - marketing and communication support for Pride of the Americas 2020.

Group and Tourism Sponsorships

Group and Tourism Sponsorships are incentives/investments paid to support events that drive visitation to Broward County.

Executive

Deerfield Beach Reef Project (second half - project total \$150K)	\$ 75,000.00
Events and Places of Interest - New opportunities	\$ 425,000.00

Underground / OFME

For The Love Music Festival	\$ 1,500.00
Gridiron Grill-Off Food, Wine & Music Festival	\$ 25,000.00
Local Cash Rebate Film Incentive	\$ 303,000.00
Local Music Artist Incentive Program	\$ 80,000.00
Riptide and Broward County Signature Event	\$ 800,000.00
Tortuga	\$ 100,000.00
Winterfest	\$ 65,000.00

LGBT

Pride Fort Lauderdale / Pride of the Americas 2020 (second payment)	\$ 250,000.00
Stonewall Pride/Wilton Manors Entertainment Group	\$ 15,000.00

Strategic Client Services

Great Bridal Expo National Wedding Shows - BCCC (2 of 8 total)	\$ 40,000.00
--	--------------

Sports

8th Annual Swim Fort Lauderdale Int Classic Nova	\$ 4,500.00
AAU District Championships Track & Field	\$ 10,000.00
American College Cricket	\$ 5,000.00
Bill Bone Spring Classic Race Weekend	\$ 2,500.00
Bowling Tournament of the Americas	\$ 5,000.00
CAN/AM Hockey	\$ 1,500.00
Capital One Orange Bowl	\$ 113,300.00
Cinco de Mayo - Memorial Sports Medicine Cycling	\$ 2,500.00
City Bike Triathlon - Las Olas Tri	\$ 5,000.00
CONCACAF/US Training Certification	\$ 6,000.00
Exotics on Las Olas	\$ 35,000.00
FABC Summer Certified Evaluation Camp	\$ 5,000.00
FIN Swimming Championships	\$ 7,500.00
FL Lacrosse Classic	\$ 10,000.00
FL Netball Classic	\$ 3,000.00
FI Senior Games	\$ 45,000.00
FL State Pepsi Bowling	\$ 8,500.00
Flag Football Gay Bowl	\$ 5,000.00
Gymnastics Touchdown invite	\$ 4,250.00
Hall of Fame Classic Baseball	\$ 5,000.00
International Water Polo	\$ 7,500.00
ISHOF 55th Annual Induction Swimming	\$ 2,500.00
ITF Level 4 Tennis	\$ 4,000.00
Junior Olympic Swimming CS	\$ 4,407.90
Kreul Classic	\$ 14,000.00
Kung Fu Tournament and Health Expo	\$ 4,000.00
Lohberg Swim Invite	\$ 9,714.90
Masters Basketball Champs	\$ 10,000.00
MLK AAU Basketball Shootout	\$ 3,500.00

National Senior Games	\$ 362,500.00
National Wrestling Coaches Association Convention	\$ 20,000.00
New Year's Classic Basketball	\$ 1,500.00
Newbreed Grappling Winter Tournament	\$ 2,500.00
NW Track and Field Classic	\$ 20,000.00
Pro Footvolley	\$ 7,500.00
Rising Stars Fall Showcase and Power Pool Tournament	\$ 23,000.00
Rising Stars Winter Showcase	\$ 8,500.00
SE Circuit Rodeo	\$ 30,000.00
Soccer Coaches Recertification	\$ 4,800.00
Spring Classic Hoffball Baseball	\$ 1,500.00
Sr Swim Champs Coral Springs	\$ 8,138.70
Sun and Surf Gymnastics Invite	\$ 6,090.00
Sunshine State Games Lacrosse	\$ 5,000.00
Sunshine State Games Water Polo	\$ 5,000.00
The MIC USA	\$ 15,000.00
Ultimate Grand Prix Fitness Competition	\$ 4,000.00
US Amateur Boys/Girls State Championships	\$ 5,000.00
US Jr Judo Open x 2	\$ 50,000.00
US Rugby National Team	\$ 4,000.00
USA Junior Beach Volleyball	\$ 50,000.00
USA Powerlifting FL Champs	\$ 2,000.00
USA Track & Field Nationals	\$ 20,000.00
USP College Tennis	\$ 2,500.00
USTA Boy 14s National Clay Court Champs Tennis	\$ 8,000.00
USTA Girls 14s National Clay Court Champs Tennis	\$ 7,000.00
USTA National Men Women Open Clay Court Champs	\$ 8,000.00
Wendy Wyland Memorial Diving Invitational	\$ 1,500.00
Wings for Life	\$ 20,000.00
YMCA Diving Championships	\$ 6,000.00
Youth National Championship	\$ 50,000.00
New opportunities	\$ 108,598.50

Multicultural

International Career and Business Alliance - Global Hall of Fame	\$ 25,000.00
Jamaican Jerk Festival	\$ 5,000.00
Jazz in the Gardens	\$ 100,000.00
Majestic Retreats - Passover	\$ 40,000.00
Taste The Island Experience	\$ 7,500.00
New opportunities	\$ 54,000.00

Group Sales

2020 Board Review	\$ 1,440.00
Appian World	\$ 15,000.00
Community Associations Institute Annual Conference	\$ 10,000.00
Cruiseworld	\$ 65,000.00
Division of Plasma Physics	\$ 11,000.00
European Wax	\$ 23,280.00
FAC Legislative Conference	\$ 2,200.00
FAIA Ruble, CISR and CIC Seminars	\$
Florida Apartment Association Education Conference	\$ 35,250.00
Florida Health Care associate Annual Convention	\$ 25,000.00
Florida International Bankers Association	\$ 18,540.00
FYSB National Safe Place	\$ 5,000.00
Global Travel Market	\$ 50,000.00

Jones Day Partner Meeting	\$ 20,000.00
Kovack Securities Annual Meeting	\$ 3,540.00
NAJIT Education Conference	\$ 1,832.00
NAPPA 2020 Conference	\$ 2,500.00
National Association of Health Unit Coordinators	\$
National Commission on Correctional Health Care	\$ 16,000.00
National Sales Meeting	\$ 7,000.00
Ocean Exchange 2019	\$ 19,000.00
PhoCusWright Conference Northstar	\$ 50,000.00
PPGC 2020 Nicklaus Children's Hospital	\$ 2,000.00
Relias Impact 2020	\$ 11,804.00
SAP Latin America - FKOM LAC	\$ 25,000.00
Schnieder National Sales Meeting	\$ 5,280.00
SCRS Global Site Solutions	\$ 10,000.00
Tropical Plant Industry Exhibition	\$ 30,000.00
Women Empowerment Expo	\$ 11,000.00
New opportunities	\$ 348,992.00

Tradeshows and partnerships

The GFLCVB attends tradeshows and participates in promotional partnerships to draw new conventions, events, and leisure visitors to Broward County.

Underground

AICP NYC (Association of Independent Commercial Producers)	\$ 10,000.00
Connections Le Book Chicago	\$ 15,000.00
Film Florida Film Council Meetings	\$ 1,500.00
Focus Location Show/Underground Film Presentation	\$ 20,000.00
Gotham Awards (Part of IFP Series Partnership)	
IFP And Underground Film Event with Independent Filmmaker's LA	\$ 10,000.00
IFP And Underground Film Event with Independent Filmmaker's NY	\$ 22,500.00
La & Ny Production Mission	\$ 20,000.00
Le Book Connections New York	\$ 11,000.00
LGBT Event Promoting Outshine Film Festival (International Market)	\$ 10,000.00
LGBT Event Promoting Outshine Film Festival (National Market)	\$ 10,000.00
LMGI Awards (Locations Managers Guild International Awards)	\$ 15,000.00
Music Festival Partnership with Live Nation	\$ 32,500.00
National Association of Television Programming	\$ 15,000.00
Outshine Film Festival Opening Night Event	\$ 15,000.00
Produced By LA	\$ 15,000.00
Produced By NYC	\$ 14,000.00
Real Screen	\$ 15,000.00
SXSW	\$ 42,000.00
Tour Connection LA	\$ 5,000.00
Tour Connection Nashville	\$ 3,000.00
Tour Connection NY	\$ 5,000.00
Tri-County /Fla Region Music Festival Partnership	\$ 25,000.00
X-Live Music	\$ 10,000.00

Tourism Sales

AAA Pittsburgh Trade Show	\$ 6,000.00
AAA Vacations Midwest & Sales Mission	\$ 6,500.00
AAA Vacations Northeast	\$ 3,600.00
American Society of Travel Advisors - Global Conference	\$ 3,500.00
American Society of Travel Advisors - Small Business Network	\$ 3,500.00
Ascend - Apple Leisure Group Trade Show	\$ 3,500.00
Brand USA - international marketing	\$ 250,000.00
Brand USA - Mexico Sales Mission	
Brand USA - TravelWeek	\$ 4,950.00
Chicago Travel & Adventure Show with Travel Advisor Event	\$ 8,000.00
Connect - Travel	\$ 3,000.00
Cruise Planners Annual Conference	
Cruise World	\$ 8,000.00
Cruise3sixty	\$ 3,500.00
Dallas Travel & Adventure Show with Texas Sales Mission	\$ 7,000.00
Delta Vacations University	\$ 3,500.00
FIT Latin America	\$ 6,000.00
GFL Creators Exchange	\$ 100,000.00
Global Travel Marketplace - Flagship	
Holland America Training, Fort Lauderdale Road Show	\$ 6,500.00
Hotelbeds Workshop Americas	\$ 6,000.00
International Inbound Travelers Association - Board Retreat	
International Inbound Travelers Association - Summit	
International Travel Agent Forum	\$ 4,500.00

La Cita	\$ 3,000.00
Las Vegas Travel Agent Forum	\$ 7,000.00
National Association of Tour Operators (ANATO)	\$ 7,000.00
Philadelphia Travel & Adventure Show	\$ 5,000.00
Seatrade	
Signature Travel Network Annual Conference	\$ 5,250.00
U.S. Travel Association IPW	\$ 47,275.00
Virtuoso Travel Week	\$ 8,000.00
Visit USA Roadshow	\$ 3,000.00
World Travel Market Brazil	\$ 12,000.00

LGBT

Community Marketing, Inc, Conference	\$ 15,000.00
FITUR 2020	\$ 5,000.00
G360 Network	\$ 10,000.00
Global LGBT+ Think Tank	\$ 10,000.00
International Gay & Lesbian Travel Association	\$ 25,000.00
Lesbian Provincetown Events	\$ 10,000.00
LGBT Meeting Planners Association	\$ 10,000.00
LGBT Tourism Forum, Brazil	\$ 10,000.00
LGBT Week/Google NYC	\$ 6,500.00
National LGBT Chamber of Commerce (NGLCC) Conference	\$ 50,000.00
New York Times Travel Show	
Out & Equal Workplace Summit	\$ 2,500.00
Provincetown Carnival Week	\$ 25,000.00
WE Trade Conference	\$ 15,000.00
World Travel & Tourism Council Summit	
Unscheduled / New Opportunities	\$ 20,000.00

Strategic Client Services

Great Bridal Expo National Wedding Shows (6 of 8 TBD)	\$ 11,690.00
---	--------------

Sports

Amateur Athletic Union (AAU) - Headquarters Visit	\$ 150.00
Amateur Athletic Union (AAU) - Leadership Conference	\$ 2,500.00
Association of Chief Executives for Sport (ACES) Conference	\$ 1,000.00
Connect - Sports Diversity Summit	\$ 2,500.00
Connect - Sports Marketplace	\$ 7,500.00
Connect - Women In Sports	\$ 600.00
Diving Equipment & Marketing Association (DEMA)	\$ 5,000.00
Florida Sports Foundation Annual Meeting	\$ 1,500.00
Florida Sports Foundation Round Table (4 times p/year)	\$ 1,000.00
Major League Soccer Combine/Florida Sports Foundation Women in Sports	\$ 1,000.00
National Collegiate Athletic Association (NCAA) United States Olympic	\$ 2,000.00
National Hockey League/National Football League Travel Show	\$ 1,000.00
National Senior Games pre promote	\$ 3,000.00
New York Client Visit	\$ 3,000.00
Sports Events & Tourism Association (name change from NASC)	\$ 3,000.00
TEAMS Conference-Northstar Travel Group	\$ 3,500.00
Tourism Day Florida Sports Foundation meeting	\$ 250.00
United States Olympic Committee Governing Bodies	\$ 500.00
World Congress of Sports	\$ 1,500.00

Multicultural

CHAT Synergy Summit	\$ 10,000.00
---------------------	--------------

Congressional Black Caucus	\$ 20,000.00
Connect - Diversity	\$ 3,500.00
Connect - Faith	\$ 3,500.00
Israel American Council	\$ 30,000.00
National Coalition of Black Meeting Planners	\$ 20,000.00
Religious Conference Management Association - Emerge	\$ 25,000.00
Religious Conference Management Association - Regional Meeting	\$ 10,000.00
United States Tennis Association Diversity & Inclusion Program	\$ 5,000.00
Women of Power Summit	\$ 10,000.00

Group Sales

2020 Canadian Meetings & Events Expo & Sales Mission	\$ 5,000.00
8th Annual Pharma Summit	\$ 3,000.00
American Express Conference	\$ 13,000.00
American Meteorological Society Annual Golf Tournament	\$ 5,000.00
ASAE & The Center - Annual Meeting & Tradeshow	\$ 10,000.00
ASAE & The Center - Strategic Partnership	\$ 140,000.00
ASAE & The Center - Great Ideas Conference	\$ 2,000.00
ASAE & The Center - Partner Conference	
Association Management Company INSTITUTE Annual Meeting (AMC)	\$ 3,000.00
Carolina Chapter Meeting Planner International Event and Sales Calls	\$ 1,000.00
Chicago Client Event/ Sales Mission - MPI Golf event	\$ 6,500.00
Conference Direct / Experient Marketing	\$ 20,000.00
Conference Direct Partner Program	\$ 6,500.00
Connect - Association	
Connect - Corporate	
Connect - Faith	
Connect - Florida	
Connect - Georgia	
Connect Marketplace (EXPO)	\$ 3,500.00
Connect - Medical Technology	
Connect Meetings	\$ 56,500.00
Convention Sales Professionals International (CSPI) Annual Conference	\$ 500.00
Cruise Line International Association Diamond Partnership	\$ 25,000.00
CVB Reps Summer Event	\$ 500.00
CVB Reps.com Holiday Event	\$ 1,000.00
CVENT - CONNECT annual conference & show	\$ 7,500.00
Cvent Online Marketing	\$ 16,050.00
DC GFLCVB Quarterly Special Event	\$ 8,500.00
DC GFLCVB Quarterly Special Event	\$ 10,000.00
DC GFLCVB Quarterly Special Event	\$ 5,000.00
DC GFLCVB Quarterly Special Event	\$ 5,000.00
Destination Celebration Tradeshow & Sales Mission 1	\$ 750.00
Destination Celebration Tradeshow & Sales Mission 2	\$ 750.00
Destination Celebration Tradeshow & Sales Mission 3	\$ 750.00
Destination International - Annual Event	\$ 3,000.00
Destination Management Association International (DMAI) - Foundation Dinner	\$ 14,500.00
Experience Design Project - (ASAE Springtime)	\$ 14,000.00
Experient E4	\$ 13,500.00
Experient Envision	\$ 12,000.00
Expo Expo! International Association of Exhibition Executives (IAEE) Annual	
FALL DC Client Event, Gold Cup Event & Appointments	\$ 35,000.00
Financial & Insurance Conference Professionals Canadian Seminar	\$ 555.00
Florida Society of Association Executives - Education Day	\$ 2,000.00
Florida Society of Association Executives (FSAE) - Annual Conference	\$ 2,500.00

Global Meetings & Incentive Travel Exchange	\$ 6,000.00
HELMS BRISCOE Partner Fair	\$ 2,000.00
HelmsBriscoe Marketing Partnership	\$ 20,000.00
Holiday Showcase - Chicago, IL	\$ 5,000.00
IMEX America	\$ 25,000.00
International Congress and Convention Association	\$ 9,000.00
Kellen Company Global Summit	\$ 6,000.00
Maritz Preferred	\$ 10,000.00
Meeting Professionals International Potomac Chapter - Derby Days	\$ 2,500.00
Meeting Professionals International - Southeast Education Conference - State of	\$ 5,000.00
Meeting Professionals International - Thought Leaders' Summit	
Meeting Professionals International - World Education Conference (WEC)	\$ 10,000.00
Meeting Professionals International Great Lakes Chapter - annual education	\$ 250.00
Meeting Professionals International Northern Kentucky & Ohio Chapter -	\$ 2,500.00
Meeting Professionals International - Partnership/ Marketing/ Advertising	\$ 102,000.00
Meeting Professionals International - Technology Summit	\$ 3,000.00
Meetings Mean Business	\$ 25,000.00
Meetings Today Live	
MPI - South Florida Annual Event	\$ 5,000.00
NE CVB Reps Events/ Fall Event	\$ 500.00
NE CVB Reps Events/ Spring Event	\$ 1,000.00
NE New York Area Special Event	\$ 5,000.00
NE Quarterly Lunch & Learns	\$ 1,200.00
NE Quarterly Special Event	\$ 15,000.00
New England Society of Association Executives - Technology Conference	\$ 2,000.00
Northstar - Destination Southeast	\$ 4,500.00
Northstar - Independent Planner Expo	\$ 6,000.00
Professional Convention Management Association - Partner Conference	
Professional Convention Management Association - Annual Meeting	\$ 13,000.00
Professional Convention Management Association - Canada East Canadian	\$ 700.00
Professional Convention Management Association - Education Conference	\$ 3,000.00
Professional Convention Management Association - Education Foundation	
Professional Convention Meeting Planners Association - Premier Sponsorship	\$ 129,875.00
Society of Government Meeting Planners - National Education Conference 2020	\$ 2,200.00
Society of Incentive Travel Executives (SITE) - Florida / Caribbean Summer	\$ 1,000.00
Society of Independent Show Organizers - CEO Summit	\$ 8,000.00
Tallahassee Holiday Event	\$ 5,000.00
Visit Florida - Governor's Conference on Tourism	\$ 600.00
Visit Florida - Florida Encounter	\$ 2,500.00

Memberships

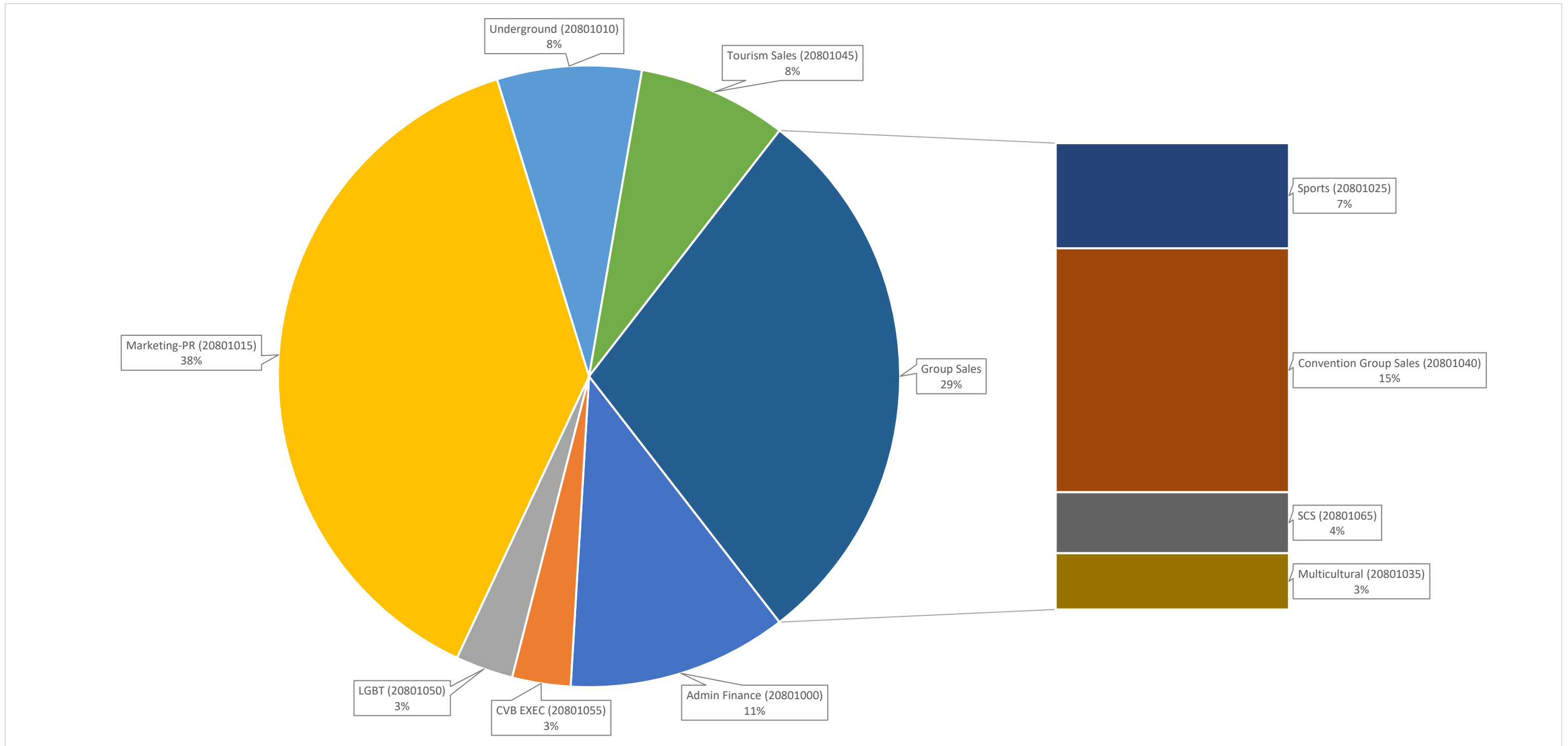
Visit USA UK/Eire

\$ 600.00

The GFLCVB participates in membership programs that support the organization's mission.

Advertising Association	\$ 300.00
Amateur Athletic Union	\$ 1,000.00
American Film Fest (AFI)	\$ 2,500.00
American Society of Association Executives	\$ 950.00
American Society of Travel Advisors	\$ 15,000.00
Association Forum	\$ 700.00
Association Management Company Institute	\$ 2,000.00
Association of Chief Executives for Sport (ACES)	\$ 1,500.00
Association of Film Commissioners International (AFCI)	\$ 1,700.00
Association of Independent Commercial Producers (AICP)	\$ 500.00
Association of Meeting Professionals	\$ 750.00
Brazilian Tour Operator Association	\$ 2,000.00
Computerized Corporate Rate Association	\$ 600.00
Convention Sales Professionals	\$ 350.00
CVB REPS	\$ 500.00
Destination Reps	\$ 3,000.00
Destinations International	\$ 80,000.00
Discover America - Canada	\$ 300.00
Family Travel Association	\$ 1,500.00
Film Florida	\$ 1,000.00
Florida Beaches Coalition (Scandinavia)	\$ 2,000.00
Florida Restaurant & Lodging Association	\$ 1,100.00
Florida Society of Association Executives	\$ 350.00
Florida Sports Foundation	\$ 2,000.00
Fort Lauderdale International Film Festival (FLIFF)	\$ 1,000.00
Ft Lauderdale Historical Society	\$ 1,000.00
Gold Coast Concierge Association	\$ 400.00
Greater Fort Lauderdale LGBT Chamber of Commerce	\$ 20,000.00
Hospitality Sales and Marketing Association International	\$ 2,850.00
International Emmys	\$ 1,000.00
International Inbound Travel Assoc.	\$ 3,500.00
International Live Events Association	\$ 500.00
Internet Movie Database Pro (IMDB)	\$ 130.00
Meeting Planners International	\$ 2,500.00
National Association Catering Events	\$ 290.00
New York Society of Association Executives	\$ 100.00
Northeast Convention Visitors Bureau Representatives	\$ 400.00
PDP (Professional Advancement Programs)	\$ 10,000.00
Professional Convention Management Association	\$ 1,310.00
Signature	\$ 40,000.00
Society of American Travel Writers & Public Relations Society of America	\$ 1,000.00
Society of Government Meeting Professionals	\$ 350.00
Sports Events & Tourism Association (name change from NASC)	\$ 1,500.00
Travel and Tourism Research Association	\$ 4,000.00
US Travel	\$ 50,000.00
Virtuoso	\$ 59,980.00
Visit Florida	\$ 6,000.00
Visit USA Argentina	\$ 575.00
Visit USA Colombia	\$ 760.00
Visit USA Comm - DACH	\$ 2,200.00
Visit USA Scandinavia	\$ 1,500.00

Budget distribution by section



* This chart does not include two accounts in the Administrative budget: *Revenue Stabilization* (\$7.9MM) or *Transfer to Broward County Cultural Affairs* (\$600K).

Administration (and research) operating expenses

Administration and research	512100 - Prof Svcs-Cnslt Rsrch-Studies	512190 - Prof Svc-Management Fees	512730 - Prof Svcs-Software Supp-Maint	519TRV	546010 - Prmtl Act-Advertising	546070 - Prmtl Act-Entertainment	547160 - Chrg-Miscellaneous Expense	556110 - Professional Dues-Memberships	Agency expenses	Totals
										\$ -
Memberships										\$ -
Travel and Tourism Research								\$ 4,000.00		\$ 4,000.00
										\$ -
Research and data										\$ -
Visitor profile, ROI, STR, and	\$ 380,000.00									\$ 380,000.00
										\$ -
Education and training										\$ -
Destinations International				\$ 2,100.00						\$ 2,100.00
Destinations International				\$ 2,100.00						\$ 2,100.00
TTRA conference				\$ 2,600.00						\$ 2,600.00
Hotel Data Conference				\$ 2,600.00						\$ 2,600.00
										\$ -
Administrative										\$ -
Software (Adobe, Dropbox,			\$ 17,000.00							\$ 17,000.00
Computers and office							\$ 47,500.00			\$ 47,500.00
Advertising vacant positions					\$ 3,000.00					\$ 3,000.00
Meetings				\$ 68,600.00		\$ 20,000.00				\$ 88,600.00
Strategic Consultant		\$ 200,000.00								\$ 200,000.00
										\$ -
511010 - Fleet Svcs-Motor									\$ 6,040.00	\$ 6,040.00
511040 - Cty Svcs-Print Shop									\$ 25,000.00	\$ 25,000.00
511060 - Cty Svcs-Cty									\$ 159,800.00	\$ 159,800.00
512510 - Prof Svcs-Auditing									\$ 14,340.00	\$ 14,340.00
512770 - Prof Svcs-Temp									\$ 4,000.00	\$ 4,000.00
520010 - Comm Svcs-Landline									\$ 2,500.00	\$ 2,500.00
520080 - Comm Svcs-									\$ 23,540.00	\$ 23,540.00
522010 - Frt-Postage Cost									\$ 10,000.00	\$ 10,000.00
526010 - Rntl-Lsg- Rental									\$ 574,170.00	\$ 574,170.00
530701 - Oth Ins-Self									\$ 3,580.00	\$ 3,580.00
530702 - Purch Ins-Allocation									\$ 550.00	\$ 550.00
540050 - RM-Equipment									\$ 1,000.00	\$ 1,000.00
545010 - Printing Services									\$ 1,000.00	\$ 1,000.00
552020 - Cost Allocation									\$ 553,650.00	\$ 553,650.00
552310 - Office Supplies									\$ 29,000.00	\$ 29,000.00
552320 - Office Equip-Furnit									\$ 4,000.00	\$ 4,000.00
556120 - Subscriptions									\$ 2,000.00	\$ 2,000.00
										\$ -
Total	\$ 380,000.00	\$ 200,000.00	\$ 17,000.00	\$ 78,000.00	\$ 3,000.00	\$ 20,000.00	\$ 47,500.00	\$ 4,000.00	\$ 1,414,170.00	\$ 2,163,670.00

Executive operating expenses

Executive	546030 - Prmtl Act-Promotnl Activities	Totals
		\$ -
Group / Tourism Sponsorships (local-event incentives)		\$ -
Events and Places of Interest - New opportunities	\$ 425,000.00	\$ 425,000.00
Deerfield Beach Reef Project (second half - project total \$150K)	\$ 75,000.00	\$ 75,000.00
		\$ -
Total	\$ 500,000.00	\$ 500,000.00

LGBT operating expenses

LGBT	519TRV	546030 - Prmtl Act-Promotnl Activities	546050 - Prmtl Act-Marketing	546070 - Prmtl Act-Entertainment	556110 - Professional Dues-Memberships	Totals
						\$ -
Tradeshows, sponsorships, and partnerships						\$ -
WE Trade Conference	\$ 5,000.00		\$ 15,000.00			\$ 20,000.00
Out & Equal Work Place Summit	\$ 3,000.00		\$ 2,500.00			\$ 5,500.00
Community Marketing, Inc, Conference			\$ 15,000.00			\$ 15,000.00
New York Times Travel Show	\$ 4,000.00					\$ 4,000.00
World Travel & Tourism Council Summit	\$ 5,000.00					\$ 5,000.00
International Gay & Lesbian Travel Association	\$ 7,500.00		\$ 25,000.00			\$ 32,500.00
LGBT Week/Google NYC	\$ 2,500.00		\$ 6,500.00			\$ 9,000.00
G360 Network	\$ 7,500.00		\$ 10,000.00			\$ 17,500.00
National LGBT Chamber of Commerce (NGLCC) Conference	\$ 3,000.00					\$ 3,000.00
FITUR 2020	\$ 7,500.00		\$ 5,000.00			\$ 12,500.00
LGBT Tourism Forum, Brazil	\$ 5,000.00		\$ 10,000.00			\$ 15,000.00
Provincetown Carnival Week	\$ 7,500.00		\$ 25,000.00			\$ 32,500.00
Lesbian Provincetown Events			\$ 10,000.00			\$ 10,000.00
Global LGBT+ Think Tank			\$ 10,000.00			\$ 10,000.00
National LGBT Chamber of Commerce (NGLCC) Conference	\$ 1,500.00		\$ 50,000.00			\$ 51,500.00
LGBT Meeting Planners Association			\$ 10,000.00			\$ 10,000.00
Unscheduled / New Events			\$ 20,000.00			\$ 20,000.00
						\$ -
Marketing and sales missions						\$ -
San Francisco Mission	\$ 3,000.00					\$ 3,000.00
Los Angeles Mission	\$ 3,000.00					\$ 3,000.00
						\$ -
Destination previews						\$ -
Destination previews				\$ 12,000.00		\$ 12,000.00
						\$ -
Advertising and promotional						\$ -
Transgender (conference support)			\$ 10,000.00			\$ 10,000.00
Gay Families (conference support)			\$ 10,000.00			\$ 10,000.00
						\$ -
Group / Tourism Sponsorships (local-event incentives)						\$ -
Pride Fort Lauderdale / Pride of the Americas 2020		\$ 250,000.00				\$ 250,000.00
Stonewall Pride/Wilton Manors Entertainment Group			\$ 15,000.00			\$ 15,000.00
						\$ -
Memberships						\$ -
Greater Fort Lauderdale LGBT Chamber of Commerce					\$ 20,000.00	\$ 20,000.00
						\$ -
Total	\$ 65,000.00	\$ 250,000.00	\$ 249,000.00	\$ 12,000.00	\$ 20,000.00	\$ 596,000.00

Underground operating expenses

Underground	519TRV	546030 - Prmtl Act-Promotnl Activities	546050 - Prmtl Act-Marketing	546070 - Prmtl Act-Entertainment	556110 - Professional Dues-Memberships	Totals
						\$ -
Tradeshows, sponsorships, and partnerships						\$ -
Ifp And Underground Film Event With Independent Filmmaker'S NY	\$ 2,500.00		\$ 22,500.00			\$ 25,000.00
Outshine Film Festival Opening Night Event	\$ -		\$ 15,000.00			\$ 15,000.00
Tour Connection Nashville	\$ 3,000.00		\$ 3,000.00			\$ 6,000.00
Produced By NYC	\$ 3,000.00		\$ 14,000.00			\$ 17,000.00
X-Live Music	\$ 3,500.00		\$ 10,000.00			\$ 13,500.00
Ifp And Underground Film Event With Independent Filmmaker's LA	\$ 3,500.00		\$ 10,000.00			\$ 13,500.00
Gotham Awards (Part Of IFP Series Partnership)	\$ 4,500.00					\$ 4,500.00
Film Florida Film Council Meetings	\$ 2,000.00		\$ 1,500.00			\$ 3,500.00
Focus Location Show/Underground Film Presentation	\$ 4,000.00		\$ 20,000.00			\$ 24,000.00
National Association Of Television Programming	\$ -		\$ 15,000.00			\$ 15,000.00
Lgbt Event Promoting Outshine Film Festival (National Market)	\$ 5,000.00		\$ 10,000.00			\$ 15,000.00
Tour Connection NY	\$ 3,000.00		\$ 5,000.00			\$ 8,000.00
Tour Connection LA	\$ 3,000.00		\$ 5,000.00			\$ 8,000.00
Lmgi Awards (Locations Managers Guild International Awards)	\$ 5,000.00		\$ 15,000.00			\$ 20,000.00
Tri-County /Fla Region Music Festival Partnership	\$ -		\$ 25,000.00			\$ 25,000.00
Real Screen	\$ 3,000.00		\$ 15,000.00			\$ 18,000.00
Produced By LA	\$ 3,000.00		\$ 15,000.00			\$ 18,000.00
Le Book Connections New York	\$ 5,000.00		\$ 11,000.00			\$ 16,000.00
Aicp Nyc (Association Of Independent Commercial Producers)	\$ 3,000.00		\$ 10,000.00			\$ 13,000.00
La & Ny Production Mission	\$ 3,000.00		\$ 20,000.00			\$ 23,000.00
Lgbt Event Promoting Outshine Film Festival (International Market)	\$ 5,000.00		\$ 10,000.00			\$ 15,000.00
Connections Le Book Chicago	\$ 5,000.00		\$ 15,000.00			\$ 20,000.00
Music Festival Partnership With Live Nation	\$ 3,000.00		\$ 32,500.00			\$ 35,500.00
SXSW	\$ 3,000.00		\$ 42,000.00			\$ 45,000.00
						\$ -
Destination previews						\$ -
Destination preview				\$ 20,000.00		\$ 20,000.00
						\$ -
Group / Tourism Sponsorships (local-event incentives)						\$ -
Tortuga		\$ 100,000.00				\$ 100,000.00
Riptide and Broward County Signature Event		\$ 800,000.00				\$ 800,000.00
Winterfest		\$ 65,000.00				\$ 65,000.00
For The Love Music Festival		\$ 1,500.00				\$ 1,500.00
Gridiron Grill-Off Food, Wine & Music Festival		\$ 25,000.00				\$ 25,000.00
Local Cash Rebate Film Incentive		\$ 303,000.00				\$ 303,000.00
Local Music Artist Incentive Program		\$ 80,000.00				\$ 80,000.00
						\$ -
Memberships						\$ -
Internet Movie Database Pro (IMDB)					\$ 130.00	\$ 130.00
Association Of Film Commissioners International (Afc)					\$ 1,700.00	\$ 1,700.00
Film Florida					\$ 1,000.00	\$ 1,000.00
Association Of Independent Commercial Producers (Aicp)					\$ 500.00	\$ 500.00
Fort Lauderdale International Film Festival (Fliff)					\$ 1,000.00	\$ 1,000.00
Advertising Association					\$ 300.00	\$ 300.00

Underground	519TRV	546030 - Prmtl Act-Promotnl Activities	546050 - Prmtl Act-Marketing	546070 - Prmtl Act-Entertainment	556110 - Professional Dues-Memberships	Totals
American Film Fest (AFI)					\$ 2,500.00	\$ 2,500.00
International Emmys					\$ 1,000.00	\$ 1,000.00
PDP (Professional Advancement Programs)					\$ 10,000.00	\$ 10,000.00
						\$ -
Total	\$ 75,000.00	\$ 1,374,500.00	\$ 341,500.00	\$ 20,000.00	\$ 18,130.00	\$ 1,829,130.00

Tourism Sales operating expenses

Tourism Sales	512190 - Prof Svc- Management Fees	519TRV	546050 - Prmtl Act- Marketing	546070 - Prmtl Act- Entertainment	556110 - Professional Dues-Memberships	Totals
						\$ -
Tradeshows, sponsorships, and partnerships						\$ -
International Travel Agent Forum		\$ 1,500.00	\$ 4,500.00			\$ 6,000.00
FIT Latin America		\$ 6,000.00	\$ 6,000.00			\$ 12,000.00
Cruise World		\$ -	\$ 8,000.00			\$ 8,000.00
Holland America Training, Fort Lauderdale Road Show			\$ 6,500.00			\$ 6,500.00
Cruise Planners Annual Conference		\$ 150.00				\$ 150.00
Signature Travel Network Annual Conference		\$ 1,500.00	\$ 5,250.00			\$ 6,750.00
AAA Pittsburgh Trade Show		\$ 1,500.00	\$ 6,000.00			\$ 7,500.00
AAA Vacations Midwest & Sales Mission		\$ 2,750.00	\$ 6,500.00			\$ 9,250.00
Chicago Travel & Adventure Show with Travel Advisor Event		\$ 2,300.00	\$ 8,000.00			\$ 10,300.00
International Inbound Travelers Association Summit		\$ 1,000.00				\$ 1,000.00
National Association of Tour Operators (ANATO)		\$ 3,000.00	\$ 7,000.00			\$ 10,000.00
Connect Travel		\$ 2,000.00	\$ 3,000.00			\$ 5,000.00
Philadelphia Travel & Adventure Show		\$ 1,500.00	\$ 5,000.00			\$ 6,500.00
AAA Vacations Northeast		\$ 1,800.00	\$ 3,600.00			\$ 5,400.00
Dallas Travel & Adventure Show with Texas Sales Mission		\$ 2,250.00	\$ 7,000.00			\$ 9,250.00
Visit USA Roadshow		\$ -	\$ 3,000.00			\$ 3,000.00
Seatrade		\$ 150.00	\$ -			\$ 150.00
Las Vegas Travel Agent Forum		\$ 3,000.00	\$ 7,000.00			\$ 10,000.00
World Travel Market Brazil		\$ 4,000.00	\$ 12,000.00			\$ 16,000.00
Cruise3sixty		\$ 3,250.00	\$ 3,500.00			\$ 6,750.00
U.S. Travel Association IPW		\$ 7,000.00	\$ 47,275.00			\$ 54,275.00
Hotelbeds Workshop Americas		\$ 2,000.00	\$ 6,000.00			\$ 8,000.00
Global Travel Marketplace, Flagship		\$ 400.00	\$ -			\$ 400.00
American Society of Travel Advisors, Global Conference		\$ 1,600.00	\$ 3,500.00			\$ 5,100.00
Virtuoso Travel Week		\$ 2,500.00	\$ 8,000.00			\$ 10,500.00
International Inbound Travelers Association - Board Retreat		\$ 1,500.00	\$ -			\$ 1,500.00
American Society of Travel Advisors, Small Business Network		\$ 1,500.00	\$ 3,500.00			\$ 5,000.00
La Cita		\$ 1,500.00	\$ 3,000.00			\$ 4,500.00
Delta Vacations University		\$ 1,200.00	\$ 3,500.00			\$ 4,700.00
Ascend - Apple Leisure Group Trade Show		\$ 1,500.00	\$ 3,500.00			\$ 5,000.00
Brand USA TravelWeek		\$ 4,000.00	\$ 4,950.00			\$ 8,950.00
GFL Creators Exchange			\$ 100,000.00			\$ 100,000.00
Brand USA Mexico Sales Mission		\$ 2,000.00				\$ 2,000.00
						\$ -
Marketing and sales missions						\$ -
NY Sales Mission		\$ 2,000.00	\$ 5,000.00			\$ 7,000.00
Canadian Sales Mission - Canada		\$ 1,500.00	\$ 4,500.00			\$ 6,000.00
New England Sales Mission, RI, MA, NH, ME		\$ 2,000.00	\$ 5,000.00			\$ 7,000.00
Ecuador/Peru Mission - Ecuador		\$ 2,500.00	\$ 5,000.00			\$ 7,500.00
Tennessee Sales Mission		\$ 1,800.00	\$ 4,000.00			\$ 5,800.00
Colombia Sales Mission - Colombia		\$ 4,000.00	\$ 5,000.00			\$ 9,000.00
San Diego Sales Mission		\$ 1,500.00	\$ 3,000.00			\$ 4,500.00
Canadian Sales Mission - Canada		\$ 1,500.00	\$ 4,500.00			\$ 6,000.00
AAA Florida Sales Blitz		\$ 500.00	\$ -			\$ 500.00

Tourism Sales	512190 - Prof Svc- Management Fees	519TRV	546050 - Prmtl Act- Marketing	546070 - Prmtl Act- Entertainment	556110 - Professional Dues-Memberships	Totals
Orlando Sales Calls - Orlando		\$ 1,000.00	\$ 1,000.00			\$ 2,000.00
Argentina/Chile/Uruguay Sales Mission - Argentina/Chile/Uruguay		\$ 4,000.00	\$ 4,500.00			\$ 8,500.00
UK Sales Mission - United Kingdom		\$ 6,000.00	\$ -			\$ 6,000.00
Brazil Sales Mission - Brazil		\$ 4,000.00	\$ 5,000.00			\$ 9,000.00
Germany Sales Mission - Germany		\$ 4,000.00	\$ 5,000.00			\$ 9,000.00
						\$ -
Destination previews						\$ -
Cruise World Pre & Post Conference				\$ 6,000.00		\$ 6,000.00
Global Travel Marketplace Pre & Post Conference				\$ 6,000.00		\$ 6,000.00
Signature Travel Network				\$ 6,000.00		\$ 6,000.00
JetBlue Vacations				\$ 1,000.00		\$ 1,000.00
AAA				\$ 1,000.00		\$ 1,000.00
Holland America x 7				\$ 49,000.00		\$ 49,000.00
Misc. Tour Operator/Travel Agent				\$ 35,000.00		\$ 35,000.00
						\$ -
Advertising and promotional						\$ -
Collateral / Shipping			\$ 5,000.00			\$ 5,000.00
Airline Business Development & Promotions		\$ 5,000.00	\$ 75,000.00			\$ 80,000.00
Airlines Travel Provider Arms - US			\$ 25,000.00			\$ 25,000.00
Trend Viagens- Brazil			\$ 5,800.00			\$ 5,800.00
CVC - Brazil			\$ 10,000.00			\$ 10,000.00
Despegar.com/Decolar.com - LATAM			\$ 15,000.00			\$ 15,000.00
Best Day - LATAM			\$ 15,000.00			\$ 15,000.00
Travel Brands - Canada			\$ 10,000.00			\$ 10,000.00
Air Canada Vacations			\$ 15,000.00			\$ 15,000.00
IPW			\$ 15,000.00			\$ 15,000.00
Brand USA			\$ 250,000.00			\$ 250,000.00
International representation - UK / Scandinavia	\$ 250,000.00					\$ 250,000.00
International representation - Germany / Benelux	\$ 100,000.00					\$ 100,000.00
International representation - Americas	\$ 75,000.00					\$ 75,000.00
Brochure highway distribution - FPIS	\$ 5,500.00					\$ 5,500.00
Brochure highway distribution - CTM	\$ 22,000.00					\$ 22,000.00
						\$ -
Memberships						\$ -
American Society of Travel Advisors					\$ 15,000.00	\$ 15,000.00
Computerized Corporate Rate Association					\$ 600.00	\$ 600.00
Family Travel Association					\$ 1,500.00	\$ 1,500.00
Brazilian Tour Operator Association					\$ 2,000.00	\$ 2,000.00
Visit USA Comm - DACH					\$ 2,200.00	\$ 2,200.00
Visit USA Colombia					\$ 760.00	\$ 760.00
International Inbound Travel Assoc.					\$ 3,500.00	\$ 3,500.00
Florida Beaches Coalition (Scandinavia)					\$ 2,000.00	\$ 2,000.00
Visit USA Argentina					\$ 575.00	\$ 575.00
Visit USA UK/Eire					\$ 600.00	\$ 600.00
Visit USA Scandinavia					\$ 1,500.00	\$ 1,500.00
Discover America - Canada					\$ 300.00	\$ 300.00
Visit Florida					\$ 6,000.00	\$ 6,000.00

Tourism Sales	512190 - Prof Svc- Management Fees	519TRV	546050 - Prmtl Act- Marketing	546070 - Prmtl Act- Entertainment	556110 - Professional Dues-Memberships	Totals
US Travel					\$ 50,000.00	\$ 50,000.00
Virtuoso					\$ 59,980.00	\$ 59,980.00
Signature					\$ 40,000.00	\$ 40,000.00
						\$ -
Education and training						\$ -
ESTO		\$ 2,500.00	\$ 1,800.00			\$ 4,300.00
Destinations International Annual Conference		\$ 3,500.00	\$ 3,000.00			\$ 6,500.00
						\$ -
Total	\$ 452,500.00	\$ 111,650.00	\$ 782,175.00	\$ 104,000.00	\$ 186,515.00	\$ 1,636,840.00

Marketing Communications operating expenses

Marketing Communications	519TRV	546010 - Prmtl Act-	546020 - Prmtl Act-	546050 - Prmtl Act-	556110 - Professional	Totals
						\$ -
Marketing and sales missions						\$ -
U.S. Travel Association's IPW trade show						\$ -
events outside of Florida to support our group sales offices in their in-market locations	\$ 2,500.00					\$ 2,500.00
Travel to and from offices of contracted agencies in the United States	\$ 4,500.00					\$ 4,500.00
Travel to and from offices of contracted agencies abroad	\$ 6,500.00					\$ 6,500.00
Consumer activations in key feeder markets	\$ 5,000.00					\$ 5,000.00
Miscellaneous travel expenses for media missions and industry events	\$ 10,000.00			\$ 100,000.00		\$ 110,000.00
	\$ 15,000.00					\$ 15,000.00
Advertising and promotional						\$ -
Advertising and public relations, including agency fees, creative assets, media buys and promotion		\$ 8,401,200.00				\$ 8,401,200.00
Website management and maintenance, including CRM, CMS, SEO and content strategy		\$ 650,000.00				\$ 650,000.00
Promotional items for trade shows, in-market groups and special events			\$ 400,000.00			\$ 400,000.00
Inventory management, shipping and call center fulfillment			\$ 300,000.00			\$ 300,000.00
						\$ -
Business outreach and service						\$ -
Training programs				\$ 80,000.00		\$ 80,000.00
						\$ -
Memberships						\$ -
Society of American Travel Writers & Public Relations Society of America					\$ 1,000.00	\$ 1,000.00
Destinations International					\$ 80,000.00	\$ 80,000.00
						\$ -
Education and training						\$ -
ESTO	\$ 3,500.00					\$ 3,500.00
Destinations International Annual Conference	\$ 3,000.00					\$ 3,000.00
Visit Florida	\$ 9,000.00					\$ 9,000.00
Other conferences	\$ 3,500.00					\$ 3,500.00
						\$ -
Total	\$ 62,500.00	\$ 9,051,200.00	\$ 700,000.00	\$ 180,000.00	\$ 81,000.00	\$ 10,074,700.00

Convention Group Sales operating expenses

Group Sales	512100 - Prof Svcs-Cnslt Rsrch-Studies	519TRV	546020 - Prmtl Act-Demonstration	546030 - Prmtl Act-Promotnl Activities	546050 - Prmtl Act-Marketing	546070 - Prmtl Act-Entertainment	556110 - Professional Dues-	Totals
								\$ -
Tradeshows, sponsorships, and partnerships								\$ -
New England Society of Association Executives - Technology Conference		\$ 1,850.00			\$ 2,000.00			\$ 3,850.00
NorthSTAR Destination Southeast		\$ 1,000.00			\$ 4,500.00			\$ 5,500.00
Connect Medical - Technology		\$ 1,500.00			\$ -			\$ 1,500.00
Connect Faith		\$ 1,500.00			\$ -			\$ 1,500.00
FALL DC Client Event, Gold Cup Event & Appts		\$ 4,000.00			\$ 35,000.00			\$ 39,000.00
NE CVB Reps Events/ Fall Event		\$ 500.00			\$ 500.00			\$ 1,000.00
Florida Society of Association Executives - Education Day		\$ 1,500.00			\$ 2,000.00			\$ 3,500.00
International Congress & Convention Association		\$ 1,675.00			\$ 5,000.00			\$ 6,675.00
Professional Convention Management Association- Canada East Canadian		\$ 1,550.00			\$ 700.00			\$ 2,250.00
Meetings Today Live		\$ 1,000.00			\$ -			\$ 1,000.00
Connect Florida		\$ 1,500.00			\$ -			\$ 1,500.00
Connect Georgia		\$ 1,500.00			\$ -			\$ 1,500.00
Meeting Planners International - Thought Leaders Summit		\$ 1,750.00			\$ -			\$ 1,750.00
Meeting Planners International Great Lakes - annual education summit		\$ 500.00			\$ 250.00			\$ 750.00
American Society of Association Executives Partner Conference		\$ 1,500.00			\$ -			\$ 1,500.00
8th Annual Pharma Summit		\$ 2,000.00			\$ 3,000.00			\$ 5,000.00
VISIT FLORIDA's Florida Encounter		\$ 2,500.00			\$ 2,500.00			\$ 5,000.00
Expo Expo! International Association of Exhibition Executives (IAEE) Annual		\$ 1,300.00			\$ -			\$ 1,300.00
CVB Reps.com Holiday Event		\$ -			\$ 1,000.00			\$ 1,000.00
Holiday Showcase - Chicago, IL		\$ 1,810.00			\$ 5,000.00			\$ 6,810.00
American Express Conference		\$ 2,700.00			\$ 13,000.00			\$ 15,700.00
Tallahassee Holiday Event		\$ 1,000.00			\$ 5,000.00			\$ 6,000.00
Professional Convention Management Association (PCMA)- Annual Meeting		\$ 7,000.00			\$ 13,000.00			\$ 20,000.00
NORTHSTAR Independent Planner Expo		\$ 2,000.00			\$ 6,000.00			\$ 8,000.00
DC GFLCVB Quarterly Special Event		\$ -			\$ 8,500.00			\$ 8,500.00
Meeting Planners International- MidAmerica (MAC) Conference - Northern		\$ 2,000.00			\$ 2,500.00			\$ 4,500.00
Association Management Company INSTITUTE Annual Meeting (AMC)		\$ 1,500.00			\$ 3,000.00			\$ 4,500.00
Destination Management Association International (DMAI) -Foundation		\$ 350.00			\$ 14,500.00			\$ 14,850.00
Global Meetings & Incentive Travel Exchange		\$ 1,500.00			\$ 6,000.00			\$ 7,500.00
NE Quarterly Special Event		\$ 2,000.00			\$ 15,000.00			\$ 17,000.00
American Society of Association Executives - Great Ideas Conference		\$ 4,000.00			\$ 2,000.00			\$ 6,000.00
Experient Envision		\$ 3,700.00			\$ 12,000.00			\$ 15,700.00
Society of Independent Show Organizers - CEO Summit		\$ 2,000.00			\$ 8,000.00			\$ 10,000.00
Professional Convention Management Association - Partner Conference		\$ 1,500.00			\$ -			\$ 1,500.00
Convention Sales Professionals International (CSPI) Annual Conference		\$ 50.00			\$ 500.00			\$ 550.00
DC GFLCVB Quarterly Special Event		\$ -			\$ 10,000.00			\$ 10,000.00
Meeting Planners International Technology Summit		\$ 2,000.00			\$ 3,000.00			\$ 5,000.00
Destination Celebration Tradeshow & Sales Mission		\$ 1,950.00			\$ 750.00			\$ 2,700.00
Destination Celebration Tradeshow & Sales Mission		\$ 1,950.00			\$ 750.00			\$ 2,700.00
Meeting Planner International Derby Days- Potomac Chapter		\$ 250.00			\$ 2,500.00			\$ 2,750.00
Conference Direct Partner Program		\$ 3,000.00			\$ 6,500.00			\$ 9,500.00
Society of Government Meeting Planners - National Education Conference		\$ 2,000.00			\$ 2,200.00			\$ 4,200.00
Experience Design Project - (American Society of Association Executives		\$ 1,500.00			\$ 14,000.00			\$ 15,500.00

Group Sales	512100 - Prof Svcs-Cnslt Rsrch-Studies	519TRV	546020 - Prmtl Act-Demonstration	546030 - Prmtl Act-Promotnl Activities	546050 - Prmtl Act-Marketing	546070 - Prmtl Act-Entertainment	556110 - Professional Dues-	Totals
HELMS BRISCOE Partner Fair		\$ 4,000.00			\$ 2,000.00			\$ 6,000.00
NE CVB Reps Events/ Spring Event		\$ 500.00			\$ 1,000.00			\$ 1,500.00
American Meteorological Society Annual Golf Tournament		\$ 500.00			\$ 5,000.00			\$ 5,500.00
Carolina Chapter Meeting Planner International Event and Sales Calls		\$ 1,000.00			\$ 1,000.00			\$ 2,000.00
MPI - South Florida Annual Event		\$ -			\$ 5,000.00			\$ 5,000.00
Professional Convention Management Association Education Foundation		\$ 3,000.00			\$ -			\$ 3,000.00
Meeting Professionals International (MPI)- World Education Conference		\$ 4,500.00			\$ 10,000.00			\$ 14,500.00
Professional Convention Management Association Education Conference		\$ 6,000.00			\$ 3,000.00			\$ 9,000.00
Florida Society of Association Executives (FSAE)- Annual Conference		\$ 1,500.00			\$ 2,500.00			\$ 4,000.00
Experient E4		\$ 2,000.00			\$ 13,500.00			\$ 15,500.00
NE Quarterly Lunch & Learns		\$ 2,500.00			\$ 1,200.00			\$ 3,700.00
DC GFLCVB Quarterly Special Event		\$ 1,000.00			\$ 5,000.00			\$ 6,000.00
Chicago Client Event/ Sales Mission - MPI Golf event		\$ 750.00			\$ 6,500.00			\$ 7,250.00
CVB Reps Summer Event		\$ 1,000.00			\$ 500.00			\$ 1,500.00
CVENT - CONNECT annual conference & show		\$ 2,000.00			\$ 7,500.00			\$ 9,500.00
Destination International Annual Event		\$ 5,000.00			\$ 3,000.00			\$ 8,000.00
Society of Incentive Travel Executives (SITE)- Florida / Caribbean Summer		\$ 1,000.00			\$ 1,000.00			\$ 2,000.00
2020 Canadian Meetings & Events Expo & Sales Mission		\$ 2,500.00			\$ 5,000.00			\$ 7,500.00
VISIT FLORIDA - Governor's Conference on		\$ 1,250.00			\$ 600.00			\$ 1,850.00
Kellen Company Global Summit		\$ 2,500.00			\$ 6,000.00			\$ 8,500.00
Financial & Insurance Conference Professionals Canadian Seminar		\$ 2,425.00			\$ 555.00			\$ 2,980.00
CONNECT Marketplace (EXPO)		\$ 12,000.00			\$ 3,500.00			\$ 15,500.00
American Society of Association Executives (ASAE) - Annual Meeting &		\$ 4,500.00			\$ 10,000.00			\$ 14,500.00
Connect - Association		\$ 1,500.00			\$ -			\$ 1,500.00
Connect - Corporate		\$ 1,500.00			\$ -			\$ 1,500.00
Meeting Planners International - Southeast Education Conference - State of		\$ 3,000.00			\$ 5,000.00			\$ 8,000.00
NE New York Area Special Event		\$ 2,000.00			\$ 5,000.00			\$ 7,000.00
DC GFLCVB Quarterly Special Event		\$ 1,000.00			\$ 5,000.00			\$ 6,000.00
Destination Celebration tradeshow & Sale Mission		\$ 1,950.00			\$ 750.00			\$ 2,700.00
IMEX America		\$ 7,500.00			\$ 25,000.00			\$ 32,500.00
HelmsBriscoe Marketing Partnership		\$ -			\$ 20,000.00			\$ 20,000.00
Meeting Planners International Partnership/ Marketing/ Advertising		\$ -			\$ 102,000.00			\$ 102,000.00
Cvent Online Marketing		\$ -			\$ 16,050.00			\$ 16,050.00
International Congress and Convention Association		\$ -			\$ 4,000.00			\$ 4,000.00
Cruise Line International Association Diamond Partnership		\$ -			\$ 25,000.00			\$ 25,000.00
Professional Convention Meeting Planners Association Premier Sponsorship		\$ -			\$ 129,875.00			\$ 129,875.00
American Society of Association Executives - Strategic Partnership		\$ -			\$ 140,000.00			\$ 140,000.00
Meetings Mean Business		\$ -			\$ 25,000.00			\$ 25,000.00
Conference Direct / Experient Marketing		\$ -			\$ 20,000.00			\$ 20,000.00
Maritz Preferred		\$ -			\$ 10,000.00			\$ 10,000.00
Connect Meetings		\$ -			\$ 56,500.00			\$ 56,500.00
								\$ -
Marketing and sales missions								\$ -
MidWest Sales calls: Chicago, Ohio, Wisconsin,		\$ 10,000.00				\$ 15,000.00		\$ 25,000.00
New York, Boston, PA, New Jersey,		\$ 10,000.00				\$ 10,000.00		\$ 20,000.00
Florida, Georgia, Carolinas, Tennessee		\$ 5,000.00				\$ 10,000.00		\$ 15,000.00
Mid-Atlantic Local Travel, Ent., Expenses		\$ 10,000.00				\$ 30,000.00		\$ 40,000.00

Group Sales	512100 - Prof Svcs-Cnslt Rsrch-Studies	519TRV	546020 - Prmtl Act-Demonstration	546030 - Prmtl Act-Promotnl Activities	546050 - Prmtl Act-Marketing	546070 - Prmtl Act-Entertainment	556110 - Professional Dues-	Totals
Local Florida - Site Inspections		\$ 15,000.00				\$ 40,000.00		\$ 55,000.00
West Coast Sales Mission		\$ 2,000.00			\$ 7,500.00			\$ 9,500.00
NE Quarterly Sales Mission - May		\$ 1,500.00			\$ 10,000.00			\$ 11,500.00
Atlanta Sales Mission - May		\$ 5,000.00			\$ 10,000.00			\$ 15,000.00
Mid-Atlantic Sales Mission DC		\$ 1,500.00			\$ 25,000.00			\$ 26,500.00
Minneapolis Sales Mission		\$ 2,500.00			\$ 5,000.00			\$ 7,500.00
Texas Sales Mission - Dallas)		\$ 2,000.00			\$ 5,000.00			\$ 7,000.00
								\$ -
Destination previews								\$ -
Specialty Destination Preview						\$ 94,000.00		\$ 94,000.00
Destination Preview						\$ 24,000.00		\$ 24,000.00
Destination Preview						\$ 25,000.00		\$ 25,000.00
Destination Preview						\$ 24,000.00		\$ 24,000.00
Destination Preview						\$ 24,000.00		\$ 24,000.00
Booth Display Materials and miscellaneous			\$ 25,000.00					\$ 25,000.00
Electronic Bid Proposal - Simpleview / NMG Annual					\$ 30,000.00			\$ 30,000.00
								\$ -
Group / Tourism Sponsorships (local-event incentives)								\$ -
PhoCusWright Conference Northstar - Nov 2019				\$ 50,000.00				\$ 50,000.00
SCRS Global Site Solutions - Oct 2019				\$ 10,000.00				\$ 10,000.00
Kovack Securities Annual Meeting - Oct 2019				\$ 3,540.00				\$ 3,540.00
Florida International Bankers Association - FELABAN Nov - 2019				\$ 18,540.00				\$ 18,540.00
FAC Legislative Conf. - Nov. 2019				\$ 2,200.00				\$ 2,200.00
Division of Plasma Physics - Oct 2019				\$ 11,000.00				\$ 11,000.00
National Commission on Correctional Health Care - Oct 2019				\$ 16,000.00				\$ 16,000.00
Cruiseworld-Nov 2019				\$ 65,000.00				\$ 65,000.00
Women Empowerment Expo-Nov 2019				\$ 11,000.00				\$ 11,000.00
FYSB National Safe Place - Nov 2019				\$ 5,000.00				\$ 5,000.00
Tropical Plant Industry Exhibition-Jan 2020				\$ 30,000.00				\$ 30,000.00
SAP Latin America - FKOM LAC- Jan. 2020				\$ 25,000.00				\$ 25,000.00
National Sales Meeting-Feb 2020				\$ 7,000.00				\$ 7,000.00
Community Associations Institute Annual Conf.-May 2020				\$ 10,000.00				\$ 10,000.00
European Wax-May 2020				\$ 23,280.00				\$ 23,280.00
Florida Health Care associate Annual Convention - July 2020				\$ 25,000.00				\$ 25,000.00
Global Travel Market- July 2020				\$ 50,000.00				\$ 50,000.00
PPGC 2020 Nicklaus Children's Hospital - Feb 2020				\$ 2,000.00				\$ 2,000.00
Appian World - March 2020				\$ 15,000.00				\$ 15,000.00
Schnieder National Sales Meeting - Feb 2020				\$ 5,280.00				\$ 5,280.00
Jones Day Partner Meeting - Feb 2020				\$ 20,000.00				\$ 20,000.00
NAPPA 2020 Conference - June 2020				\$ 2,500.00				\$ 2,500.00
2020 Board Review - May 2020				\$ 1,440.00				\$ 1,440.00
NAJIT Education Conference - June 2019				\$ 1,832.00				\$ 1,832.00
National Association of Health Unit Coordinators - Aug. 2020				\$ 786.00				\$ 786.00
FAIA Ruble, CISR and CIC Seminars - Aug 2020				\$ 246.00				\$ 246.00
Relias Impact 2020 - Sept 2020				\$ 11,804.00				\$ 11,804.00
Florida Apartment Association Education Conference- Sept. 2020				\$ 35,250.00				\$ 35,250.00
Ocean Exchange 2019				\$ 19,000.00				\$ 19,000.00

Group Sales	512100 - Prof Svcs-Cnslt Rsrch-Studies	519TRV	546020 - Prmtl Act-Demonstration	546030 - Prmtl Act-Promotnl Activities	546050 - Prmtl Act-Marketing	546070 - Prmtl Act-Entertainment	556110 - Professional Dues-	Totals
New Opportunities				\$ 348,992.00				\$ 348,992.00
								\$ -
Memberships								\$ -
Convention Sales Professionals							\$ 350.00	\$ 350.00
Association Management Company Institute							\$ 2,000.00	\$ 2,000.00
Association of Meeting Professionals							\$ 750.00	\$ 750.00
American Society of Association Executives							\$ 950.00	\$ 950.00
Association Forum							\$ 700.00	\$ 700.00
Destination Reps							\$ 3,000.00	\$ 3,000.00
CVB REPS							\$ 500.00	\$ 500.00
Northeast Convention Visitors Bureau Representatives							\$ 400.00	\$ 400.00
Florida Society of Association Executives							\$ 350.00	\$ 350.00
Meeting Planners International							\$ 2,500.00	\$ 2,500.00
New York Society of Association Executives							\$ 100.00	\$ 100.00
Professional Convention Management Association							\$ 950.00	\$ 950.00
Society of Government Meeting Professionals							\$ 350.00	\$ 350.00
								\$ -
Research and data								\$ -
Trends Analysis Projection (TAP) Report	\$ 35,000.00							\$ 35,000.00
Database Lists & Similar tools	\$ 48,000.00							\$ 48,000.00
DMAI MINT Reports, and empowerMINT listing	\$ 15,000.00							\$ 15,000.00
Knowland Reader Boards	\$ 25,000.00							\$ 25,000.00
								\$ -
Education and training								\$ -
Educational Training - CASE, CMP, PDM, etc.		\$ 19,000.00						\$ 19,000.00
Annual GFLCVB Meeting/ Broward Cty training		\$ 10,000.00						\$ 10,000.00
Meetings Mean Business		\$ 25,000.00						\$ 25,000.00
								\$ -
Total	\$ 123,000.00	\$ 272,760.00	\$ 25,000.00	\$ 826,690.00	\$ 985,180.00	\$ 296,000.00	\$ 12,900.00	\$ 2,541,530.00

Multicultural Sales operating expenses

Multicultural Sales	Manager	Month	519TRV	546030 - Prmtl Act-Promotnl Activities	546050 - Prmtl Act-Marketing	546070 - Prmtl Act-Entertainment	Totals
							\$ -
Tradeshows, sponsorships, and partnerships							\$ -
Women of Power Summit					\$ 10,000.00		\$ 10,000.00
Religious Conference Management Association - Regional Meeting					\$ 10,000.00		\$ 10,000.00
Connect Faith - Registration			\$ 2,000.00		\$ 3,500.00		\$ 5,500.00
Israel American Council					\$ 30,000.00		\$ 30,000.00
National Coalition of Black Meeting Planners			\$ 5,000.00		\$ 20,000.00		\$ 25,000.00
Religious Conference Management Association - Emerge			\$ 2,000.00		\$ 25,000.00		\$ 27,000.00
Connect - Diversity			\$ 2,000.00		\$ 3,500.00		\$ 5,500.00
CHAT Synergy Summit			\$ 2,000.00		\$ 10,000.00		\$ 12,000.00
United States Tennis Association Diversity & Inclusion Program			\$ 2,000.00		\$ 5,000.00		\$ 7,000.00
Congressional Black Caucus			\$ 2,500.00		\$ 20,000.00		\$ 22,500.00
							\$ -
Marketing and sales missions							\$ -
Washington, D.C. Clients Event			\$ 2,500.00			\$ 20,000.00	\$ 22,500.00
Site Visits / Unscheduled Travel			\$ 10,000.00				\$ 10,000.00
							\$ -
Destination previews							\$ -
December Destination Preview			\$ 2,500.00		\$ 10,000.00		\$ 12,500.00
Destination preview - affinity groups			\$ 8,000.00		\$ 60,000.00		\$ 68,000.00
Jazz in the Gardens Destination Preview						\$ 40,500.00	\$ 40,500.00
							\$ -
Advertising and promotional							\$ -
Black History Month Promotion/Marketing					\$ 10,000.00		\$ 10,000.00
Africa Umoja					\$ 15,000.00		\$ 15,000.00
Destination Sistrunk					\$ 50,000.00		\$ 50,000.00
							\$ -
Group / Tourism Sponsorships (local-event incentives)							\$ -
Jazz in the Gardens				\$ 100,000.00			\$ 100,000.00
International Career and Business Alliance - Global Hall of Fame				\$ 25,000.00			\$ 25,000.00
Majestic Retreats - Passover				\$ 40,000.00			\$ 40,000.00
Taste The Island Experience				\$ 7,500.00			\$ 7,500.00
Jamaican Jerk Festival				\$ 5,000.00			\$ 5,000.00
New opportunities				\$ 54,000.00			\$ 54,000.00
							\$ -
Total			\$ 40,500.00	\$ 231,500.00	\$ 282,000.00	\$ 60,500.00	\$ 614,500.00

Sports Sales operating expenses

Sports Sales	519TRV	546030 - Prmtl Act-Promotnl Activities	546070 - Prmtl Act-Entertainment	556110 - Professional Dues-Memberships	556120 - Subscriptions	Totals
						\$ -
Tradeshows, sponsorships, and partnerships						\$ -
TEAMS Conference-Northstar Travel Group-Anaheim	\$ 3,500.00	\$ 3,500.00				\$ 7,000.00
Amateur Athletic Union (AAU) Leadership Conference-Anaheim	\$ 2,000.00	\$ 2,500.00				\$ 4,500.00
Association of Chief Executives for Sport (ACES) Conference - Colorado	\$ 4,500.00	\$ 1,000.00				\$ 5,500.00
Amateur Athletic Union (AAU) Headquarters Visit-Orlando	\$ 1,500.00	\$ 150.00				\$ 1,650.00
Major League Soccer Combine/Florida Sports Foundation Women in Sports	\$ 4,000.00	\$ 1,000.00				\$ 5,000.00
Connect Sports Diversity Summit- Los Angeles	\$ 2,500.00	\$ 2,500.00				\$ 5,000.00
Tourism Day Florida Sports Foundation meeting-Tallahassee	\$ 1,500.00	\$ 250.00				\$ 1,750.00
World Congress of Sports-California	\$ 2,000.00	\$ 1,500.00				\$ 3,500.00
United States Olympic Committee Governing Bodies visit -CO	\$ 2,300.00	\$ 500.00				\$ 2,800.00
Florida Sports Foundation Round Table (4 times p/year) Various Fl cities	\$ 6,000.00	\$ 1,000.00				\$ 7,000.00
Sports Events & Tourism Association (name change from NASC) -Kansas City	\$ 5,000.00	\$ 3,000.00				\$ 8,000.00
Florida Sports Foundation Annual Meeting	\$ 2,000.00	\$ 1,500.00				\$ 3,500.00
National Hockey League/National Football League Travel Show	\$ 2,000.00	\$ 1,000.00				\$ 3,000.00
CONNECT Sports Marketplace	\$ 5,000.00	\$ 7,500.00				\$ 12,500.00
Connect Women In Sports	\$ 1,500.00	\$ 600.00				\$ 2,100.00
National Senior Games pre promote	\$ 2,000.00	\$ 3,000.00				\$ 5,000.00
New York Client Visit	\$ 2,000.00	\$ 3,000.00				\$ 5,000.00
Diving Equipment & Marketing Association (DEMA)--Orlando	\$ 2,000.00	\$ 5,000.00				\$ 7,000.00
National Collegiate Athletic Association (NCAA) United States Olympic Committee	\$ 1,000.00	\$ 2,000.00				\$ 3,000.00
						\$ -
Destination previews						\$ -
Destination preview – quarterly			\$ 30,000.00			\$ 30,000.00
Destination preview – quarterly			\$ 30,000.00			\$ 30,000.00
Destination preview – quarterly			\$ 30,000.00			\$ 30,000.00
Destination preview – quarterly			\$ 30,000.00			\$ 30,000.00
Destination preview - TBD			\$ 30,000.00			\$ 30,000.00
						\$ -
Group / Tourism Sponsorships (local-event incentives)						\$ -
Ultimate Grand Prix Fitness Competition		\$ 4,000.00				\$ 4,000.00
Kung Fu Tournament and Health Expo		\$ 4,000.00				\$ 4,000.00
Flag Football Gay Bowl		\$ 5,000.00				\$ 5,000.00
Rising Stars Fall Showcase and Power Pool Tournament		\$ 23,000.00				\$ 23,000.00
SE Circuit Rodeo		\$ 30,000.00				\$ 30,000.00
Exotics on Las Olas		\$ 35,000.00				\$ 35,000.00
The MIC USA		\$ 15,000.00				\$ 15,000.00
USP College Tennis		\$ 2,500.00				\$ 2,500.00
Fl Senior Games		\$ 45,000.00				\$ 45,000.00
Kreul Classic		\$ 14,000.00				\$ 14,000.00
Youth National Championship		\$ 50,000.00				\$ 50,000.00
FL Lacrosse Classic		\$ 10,000.00				\$ 10,000.00
Newbreed Grappling Winter Tournament		\$ 2,500.00				\$ 2,500.00
Gymnastics Touchdown invite		\$ 4,250.00				\$ 4,250.00
Rising Stars Winter Showcase		\$ 8,500.00				\$ 8,500.00
New Years Classic Basketball		\$ 1,500.00				\$ 1,500.00

Sports Sales	519TRV	546030 - Prmtl Act-Promotnl Activities	546070 - Prmtl Act-Entertainment	556110 - Professional Dues-Memberships	556120 - Subscriptions	Totals
MLK AAU Basketball Shootout		\$ 3,500.00				\$ 3,500.00
US Rugby National Team		\$ 4,000.00				\$ 4,000.00
Sun and Surf Gymnastics Invite		\$ 6,090.00				\$ 6,090.00
Pro Footvolley		\$ 7,500.00				\$ 7,500.00
Soccer Coaches Recertification		\$ 4,800.00				\$ 4,800.00
International Water Polo		\$ 7,500.00				\$ 7,500.00
Wendy Wyland Memorial Diving Invitational		\$ 1,500.00				\$ 1,500.00
Junior Olympic Swimming CS		\$ 4,407.90				\$ 4,407.90
CONCACAF/US Training Certification		\$ 6,000.00				\$ 6,000.00
American College Cricket		\$ 5,000.00				\$ 5,000.00
City Bike Triathlon - Las Olas Tri		\$ 5,000.00				\$ 5,000.00
Bill Bone Spring Classic Race Weekend		\$ 2,500.00				\$ 2,500.00
Hall of Fame Classic Baseball		\$ 5,000.00				\$ 5,000.00
FL Netball Classic		\$ 3,000.00				\$ 3,000.00
USA Powerlifting FL Champs		\$ 2,000.00				\$ 2,000.00
Spring Classic Hoffball Baseball		\$ 1,500.00				\$ 1,500.00
YMCA Diving Championships		\$ 6,000.00				\$ 6,000.00
FL State Pepsi Bowling		\$ 8,500.00				\$ 8,500.00
CAN/AM Hockey		\$ 1,500.00				\$ 1,500.00
FIN Swimming Championships		\$ 7,500.00				\$ 7,500.00
Cinquo de Mayo - Memorial Sports Medicine Cycling		\$ 2,500.00				\$ 2,500.00
Wings for Life		\$ 20,000.00				\$ 20,000.00
USTA National Men Women Open Clay Court Champs		\$ 8,000.00				\$ 8,000.00
ITF Level 4 Tennis		\$ 4,000.00				\$ 4,000.00
Masters Basketball Champs		\$ 10,000.00				\$ 10,000.00
Sunshine State Games Lacrosse		\$ 5,000.00				\$ 5,000.00
ISHOF 55th Annual Induction Swimming		\$ 2,500.00				\$ 2,500.00
US Amateur Boys/Girls State Championships		\$ 5,000.00				\$ 5,000.00
AAU District Championships Track & Field		\$ 10,000.00				\$ 10,000.00
Lohberg Swim Invite		\$ 9,714.90				\$ 9,714.90
NW Track and Field Classic		\$ 20,000.00				\$ 20,000.00
FABC Summer Certified Evaluation Camp		\$ 5,000.00				\$ 5,000.00
Sunshine State Games Water Polo		\$ 5,000.00				\$ 5,000.00
8th Annual Swim Fort Lauderdale Int Classic Nova		\$ 4,500.00				\$ 4,500.00
USA Track & Field Nationals		\$ 20,000.00				\$ 20,000.00
US Jr Judo Open x 2		\$ 50,000.00				\$ 50,000.00
USTA Boy 14s National Clay Court Champs Tennis		\$ 8,000.00				\$ 8,000.00
USTA Girls 14s National Clay Court Champs Tennis		\$ 7,000.00				\$ 7,000.00
USA Junior Beach Volleyball		\$ 50,000.00				\$ 50,000.00
Bowling Tournament of the Americas		\$ 5,000.00				\$ 5,000.00
National Wrestling Coaches Association Convention		\$ 20,000.00				\$ 20,000.00
Sr Swim Champs Coral Springs		\$ 8,138.70				\$ 8,138.70
Capital One Orange Bowl		\$ 113,300.00				\$ 113,300.00
National Senior Games		\$ 362,500.00				\$ 362,500.00
New opportunities		\$ 108,598.50				\$ 108,598.50
						\$ -
Memberships						\$ -

Sports Sales	519TRV	546030 - Prmtl Act- Promotnl Activities	546070 - Prmtl Act- Entertainment	556110 - Professional Dues-Memberships	556120 - Subscriptions	Totals
Amateur Athletic Union				\$ 1,000.00		\$ 1,000.00
Sports Events & Tourism Association (name change from NASC)				\$ 1,500.00		\$ 1,500.00
Florida Sports Foundation				\$ 2,000.00		\$ 2,000.00
Association of Chief Executives for Sport (ACES)				\$ 1,500.00		\$ 1,500.00
Sports department	\$ 6,000.00					\$ 6,000.00
						\$ -
Research and data						\$ -
Sports Business Journal					\$ 300.00	\$ 300.00
						\$ -
Total	\$ 58,300.00	\$ 1,251,300.00	\$ 150,000.00	\$ 6,000.00	\$ 300.00	\$ 1,465,900.00

Strategic Client Services operating expenses

Strategic Client Services	512100 - Prof Svcs-Cnslt Rsrch-Studies	519TRV	546020 - Prmtl Act-Demonstration Suppl	546030 - Prmtl Act-Promotnl Activities	546050 - Prmtl Act-Marketing	546070 - Prmtl Act-Entertainment	547220 - Chrg-Transportation Costs	556110 - Professional Dues-Memberships	Totals
									\$ -
Tradeshows, sponsorships, and partnerships									\$ -
Great Bridal Expo National Wedding Shows (6 of 8 TBD)		\$ 6,550.00			\$ 11,690.00				\$ 18,240.00
									\$ -
Business outreach and service									\$ -
SimpleView Conference		\$ 2,400.00			\$ 500.00				\$ 2,900.00
Prof Conv Mgmt Assn Edu-Con / Dest Intl Sales & Services Summit		\$ 2,200.00			\$ 2,000.00				\$ 4,200.00
City-Wide / Group Pre-Promotes (4)		\$ 4,600.00			\$ 3,850.00				\$ 8,450.00
FTL Intl Boat Show Onsite Activation					\$ 25,000.00				\$ 25,000.00
Misc. Services / Planning Sites						\$ 45,000.00			\$ 45,000.00
Promotional Items / Booth / Event Décor					\$ 30,250.00				\$ 30,250.00
FLL / Group Signage & Banners / Print Shop					\$ 5,000.00				\$ 5,000.00
Bus and vehicle transportation vendor							\$ 200,000.00		\$ 200,000.00
SUNsational Service Training Program	\$ 25,000.00								\$ 25,000.00
Pocket brochure and map pad					\$ 25,000.00				\$ 25,000.00
Tradeshow booth storage and shipping			\$ 150,000.00						\$ 150,000.00
									\$ -
Group / Tourism Sponsorships (local-event incentives)									\$ -
Great Bridal Expo National Wedding Shows - BCCC (2 of 8 total)				\$ 40,000.00					\$ 40,000.00
									\$ -
Memberships									\$ -
Professional Convention Management Association								\$ 360.00	\$ 360.00
Florida Restaurant & Lodging Association								\$ 1,100.00	\$ 1,100.00
International Live Events Association								\$ 500.00	\$ 500.00
Ft Lauderdale Historical Society								\$ 1,000.00	\$ 1,000.00
Gold Coast Concierge Association								\$ 400.00	\$ 400.00
National Association Catering Events								\$ 290.00	\$ 290.00
Hospitality Sales and Marketing Association International								\$ 2,850.00	\$ 2,850.00
									\$ -
Total	\$ 25,000.00	\$ 15,750.00	\$ 150,000.00	\$ 40,000.00	\$ 103,290.00	\$ 45,000.00	\$ 200,000.00	\$ 6,500.00	\$ 585,540.00