



**BROWARD COUNTY  
CONVENTION CENTER**  
— GREATER FORT LAUDERDALE —

# PROPOSAL FOR American Physiological Society Annual Meeting



Prepared by Dafne Militano Anderson  
954.765.5903  
[danderson@ftlauderdalecc.com](mailto:danderson@ftlauderdalecc.com)







# AREA

---

Located minutes from Fort Lauderdale's famed Blue Wave Beaches

---

Adjacent to Broward County's Port Everglades

---

Five-minute drive from the Fort Lauderdale / Hollywood International Airport

---

Proximity to local dining and shopping

---

# CERTIFIED LEED BUILDING

- ▶ LEED for Existing Buildings Gold-certified facility. Eco-friendly Design and Operation



# ADA ACCESSIBLE FACILITY

- ▶ Ramp access, restroom facilities, braille elevator buttons, automatic door opener
- ▶ Evacuation chairs available





# EXPANSION HIGHLIGHTS UPON COMPLETION OF PHASE 1:

- ▶ 350,000 sq. ft. of contiguous space
- ▶ More than 60,000 sq. ft. in 3 elegant ballrooms
- ▶ Second and third floor flexible meeting space
- ▶ New and modern pre-function space
- ▶ 1,800+ parking spaces
- ▶ Outdoor waterfront plaza
- ▶ State-of-the-art technology

## Construction Schedule\*:

-Phase 1: West Expansion  
October 2021

Phase 2: East Expansion Q2,

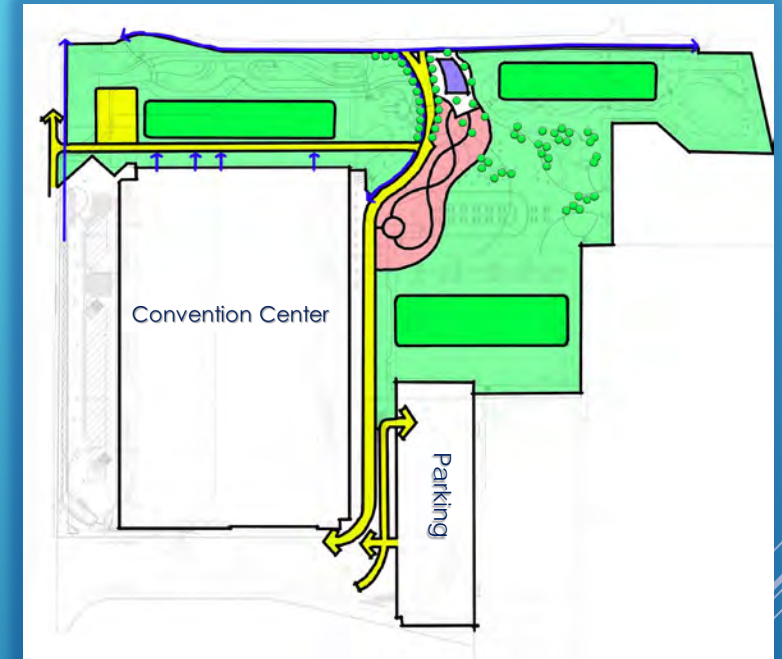
Phase 3: Headquarter Hotel &  
Outdoor Event Space

\*Schedule subjects to change at  
anytime

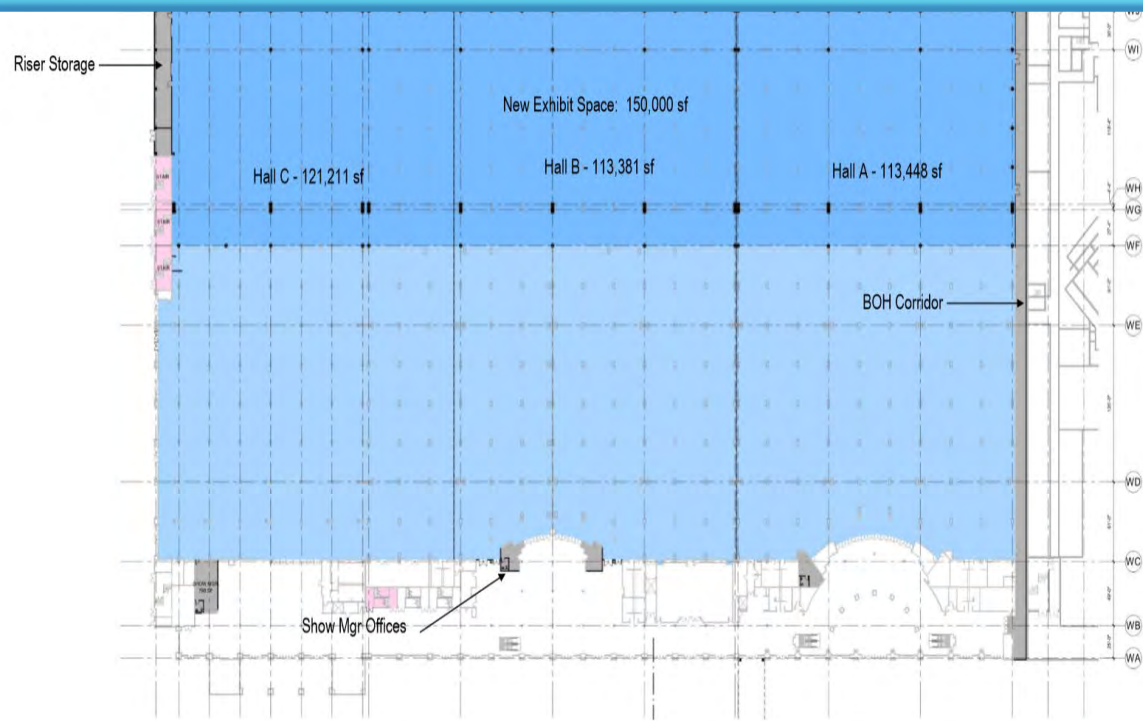


Garage parking with covered skywalks to Convention Center

INITIAL DRAFT OF PLAZA CONCEPT DURING CONSTRUCTION PHASES.



DRAWING IS INTENDED AS CONCEPT ONLY; DRAWING IS NOT FINAL AND IS SUBJECT TO CHANGE AT ANYTIME.

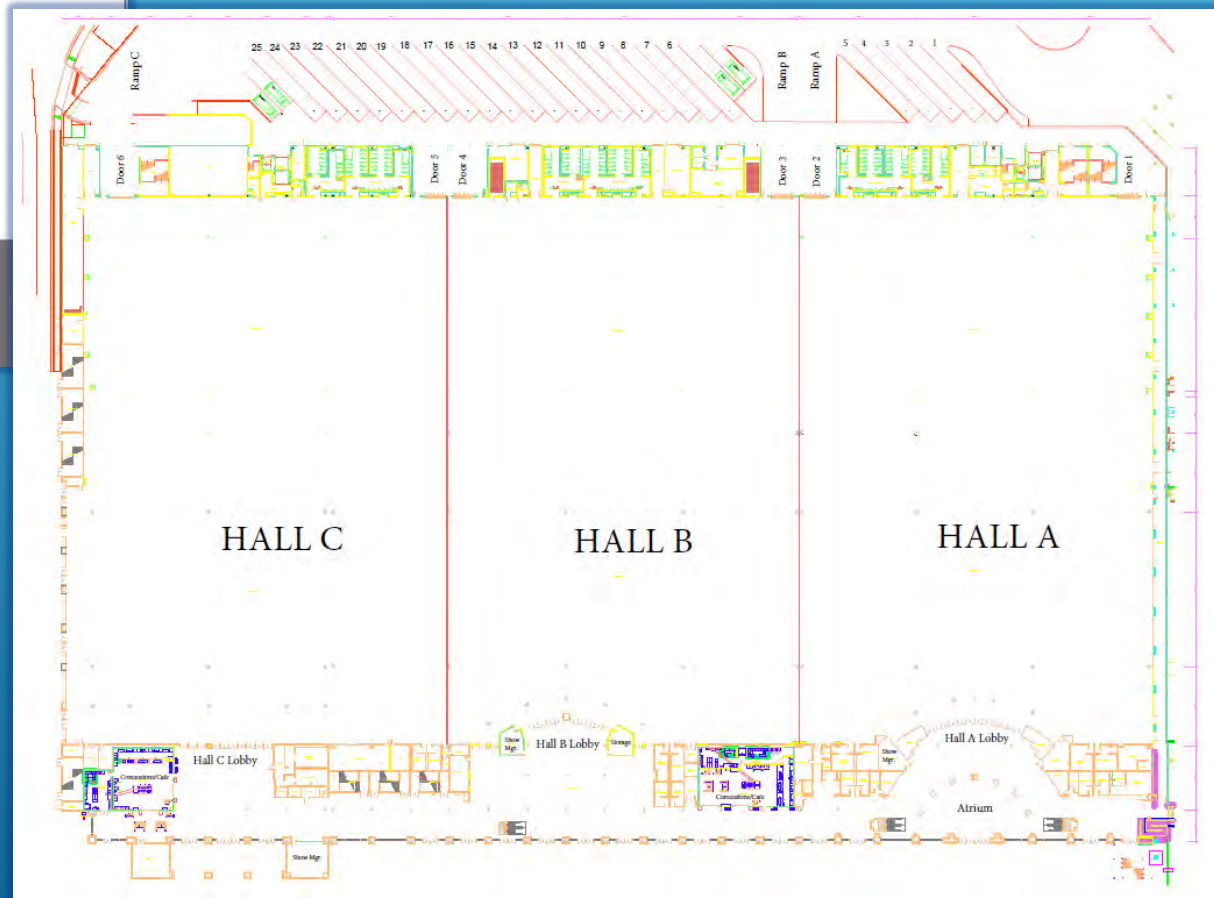


## West Expansion: First Floor

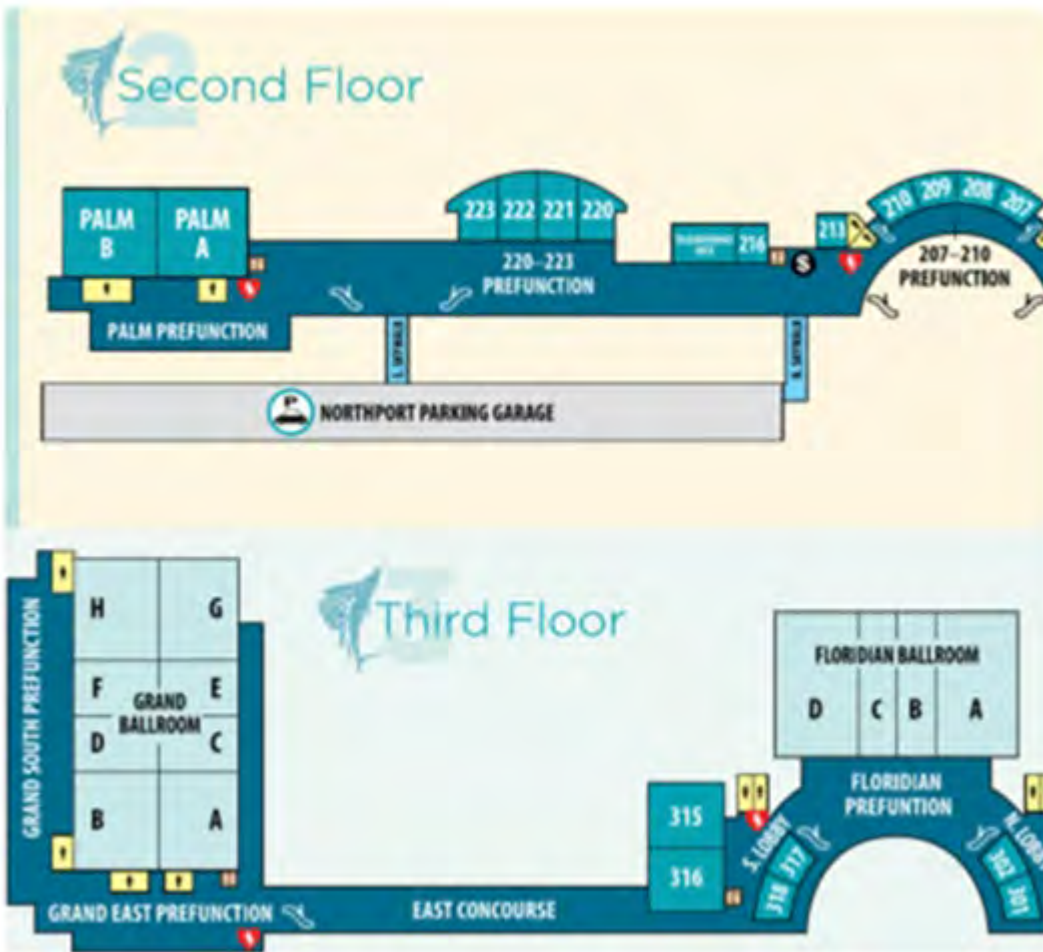
BROWARD COUNTY CONVENTION CENTER EXPANSION & HEADQUARTERS HOTEL | FORT LAUDERDALE, FLORIDA  
MATTHEWS SOUTHWEST | BALFOUR BEATTY | STANTEC | FENTRESS ARCHITECTS | NUNZIO MARC DESANTIS ARCHITECTS

- ▶ Equipment Portable performance stage, full dance floors, risers in a variety of heights, and elevated riser seating system
- ▶ Water/Compressed Air Full service available in exhibit halls at columns.
- ▶ 25 Easily accessible loading docks

## EXISTING AND UPGRADES:







- ▶ Electrical Service 120/208-volt, 100-amp, 3-phase, 4-wire with ground, quick-connects in floor boxes located on 30' x 30' centers. 277/480-volt, 3-phase service available from exhibit hall ceiling.
- ▶ Upgraded Furnishings and Décor
- ▶ State of Art Technology
- ▶ Enhanced Pre-Function Space
- ▶ Upgraded Restroom Facilities
- ▶ Internet/Telecom Event network design assistance available (individual LAN's and VPN's connect floor-to-floor, room-to-room and booth-to-booth)
- ▶ ADA Accessible Ramp Access, and automatic door openers



# SOUTH FLORIDA'S PREMIER WATERFRONT CONVENTION CENTER



WEST BUILDING:	Sq Ft	Dimensions	Theater	Classroom	Reception	Banquet	10x10 Exh	
Grand Ballroom	31,639	245'x130'	3,560	2,208	3,164	2,000	160	3rd Floor
Grand Ballroom A	4,862	78'x62'	530	336	486	300	24	
Grand Ballroom B	5,252	78'x67'	530	336	525	300	25	
Grand Ballroom C	2,701	43'x62'	280	216	270	150	14	
Grand Ballroom D	2,918	43'x67'	280	226	292	150	15	
Grand Ballroom E	2,701	43'x62'	280	216	270	150	14	
Grand Ballroom F	2,918	43'x67'	280	226	292	150	15	
Grand Ballroom G	4,945	79'x62'	530	336	495	300	27	
Grand Ballroom H	5,342	79'x67'	530	336	534	300	26	
Floridian Ballroom	20,316	190'x112'	2,100	1,380	2,032	1,160	102	
Floridian A	6,798	65'x112'	700	465	680	560	34	
Floridian B	3,360	30'x112'	365	225	336	250	17	
Floridian C	3,360	30'x112'	365	225	336	250	17	
Floridian D	6,798	65'x112'	700	465	680	560	34	
Room 301 / 302	1,890	63'x30'	144	117	189	120	x	
Room 301	990	33'x30'	72	54	99	60	x	
Room 302	900	30'x30'	87	54	90	60	x	
Room 315 / 316	5,841	99'x59'	620	396	584	400	25	2nd Floor
Room 315	2,891	49'x59'	298	174	289	180	x	
Room 316	2,950	50'x59'	314	192	295	200	x	
Room 317 / 318	1,890	63'x30'	144	117	189	120	x	
Room 317	900	30'x30'	87	54	90	60	x	
Room 318	990	33'x30'	72	54	100	60	x	
Room 203 / 204	1,196	44'x27'	121	75	119	80	x	
Room 203	598	22'x27'	53	36	60	40	x	
Room 204	598	22'x27'	55	42	60	42	x	
Room 207 / 208	1,512	63'x24'	160	114	151	110	x	
Room 207	672	28'x24'	73	45	67	40	x	
Room 208	840	35'x24'	98	60	84	60	x	
Room 209 / 210	1,512	63'x24'	160	114	151	110	x	
Room 209	840	35'x24'	98	60	84	60	x	
Room 210	672	28'x24'	73	45	67	40	x	
Room 213	572	22'x26'	66	39	57	40	x	
Room 216	644	23'x28'	70	45	64	40	x	
Teleconference Suite	1,297	46'x28'	110	57	130	70	x	
Room 220 / 221	2,755	95'x29'	280	171	276	180	x	
Room 220	1,247	43'x29'	107	66	125	80	x	
Room 221	1,508	52'x29'	133	84	151	110	x	
Room 222 / 223	2,755	95'x29'	280	171	276	180	x	
Room 222	1,508	52'x29'	133	84	151	110	x	
Room 223	1,247	43'x29'	107	66	125	80	x	
Palm Ballroom	9,313	139'x67'	1,110	837	931	600	47	1st Floor
Palm A	4,556	68'x67'	540	420	456	300	23	
Palm B	4,757	71'x67'	540	420	476	300	24	
Exhibit Hall	348,040	425'x 821'	38,850	14,571	35,000	29,121	1,723	
Exhibit Hall A	113,448	425'x269'	12,950	4,857	11,000	9,707	567	
Exhibit Hall B	113,381	425'x272'	12,950	4,857	11,000	9,707	567	
Exhibit Hall C	119,000	425'x280'	13,600	5,000	11,500	10,000	580	

# SPACE UTILIZATION OVERVIEW

April 25-May 1<sup>st</sup>,  
2023

SPACE	EVENT	DATE
Hall A Atrium & Lobby Show office 107	Registration Show Office 1	Tue-Wed Move in Thurs-Sun Show
Show Office Hall C 203 204 207 208 209, 210 Conference suite 213 216	Office-Staff General Committee 1 General Committee 2 General Committee 3 General Committee 4 General Committee 5 General Committee 6 General Committee 7 First Aid Nursing Room	Wed Move in Thurs – Show
Hall A Hall B	Physio Hub & Posters General Session (back of hall: Speaker ready room, AV storage)	Wed Move in Thurs-Sun Show
Floridian Prefunction Space	Reception	Thurs
Floridian AB Floridian BC Grand AB Grand CDEF Grand G Grand H 220/221 222/223 315 316	Game Changer 1 Game Changer 2 Game Cnaher 3 Game Changer 4 Science Session 5 Science Session 6 Science Session 7 Science Session 8 Science Session 9 Science Session 10	Wed Move-in Thurs- Sun Show



# MEETING ROOM RENTAL

• MEETING ROOM RENTAL:	\$276,700.00
• CONVENTION CENTER DISCOUNT*:	-\$130,000.00
• TOTAL MEETING ROOM RENTAL:	\$146,700.00

*(\*) Discount will apply provided that a food and beverage minimum of \$400,000.00 (exclusive of tax and service charge) is purchased in catering.*

*Meeting Rental does not include 7% tax.  
This proposal is valid until 06/09/2021. After that rates and availability might change.*

# CONVENTION CENTER INCENTIVES:



The Greater Fort Lauderdale Broward County Convention Center is pleased to offer the following Special Concessions:

- Complimentary (10) parking for Staff at the Center's Parking Garage. (upon availability)
- Discounted Parking for Attendees
- Discounted Room rental w/ F&B Minimum





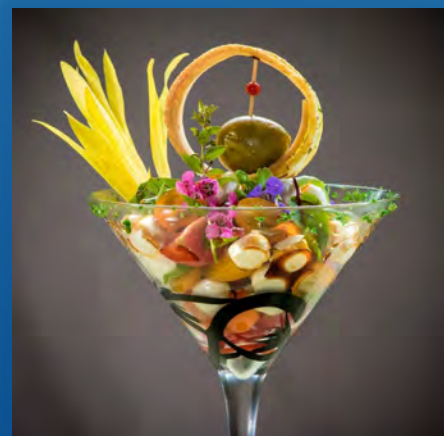


# HOSPITALITY, COMMUNITY, TASTE...

Savor's mission is to enrich visitor experience, building upon your vision through food – listening, learning, growing, harvesting, cooking and breaking bread together.



# SAVOR...





## COMMITMENT TO SAFETY

- ▶ The newly expanded Greater Fort Lauderdale/Broward County Convention Center has been designed with ASM Global's *VenueShield* protocol to provide the highest levels of cleanliness and safety while inspiring the confidence of planners and attendees, all in partnership with leading medical professionals, industry experts and public health officials.

