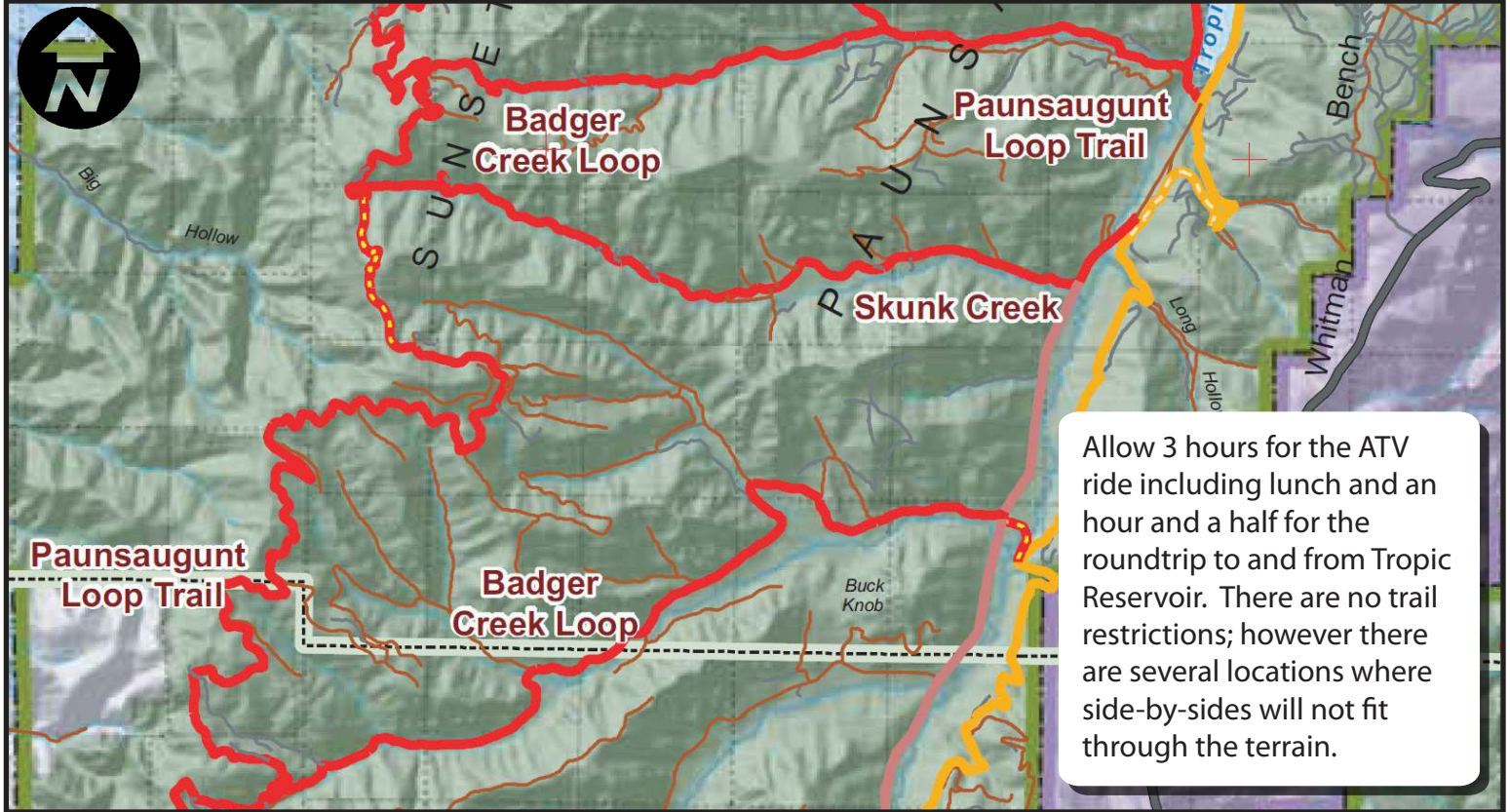


Badger Creek Loop



Twenty miles in length and is characterized by many high mountain meadows and thick forest canopy.



Allow 3 hours for the ATV ride including lunch and an hour and a half for the roundtrip to and from Tropic Reservoir. There are no trail restrictions; however there are several locations where side-by-sides will not fit through the terrain.

Skill Level - Intermediate

Leaving Tropic Reservoir, this ride climbs through the forest to a high ridge which provides numerous different majestic views.



Riders must trailer their ATV's 25 miles to Tropic Reservoir near Bryce Canyon National Park, via US 89 and Scenic Highway 12.



More information at www.BryceCanyonCountry.com and www.Utah-Trails.com