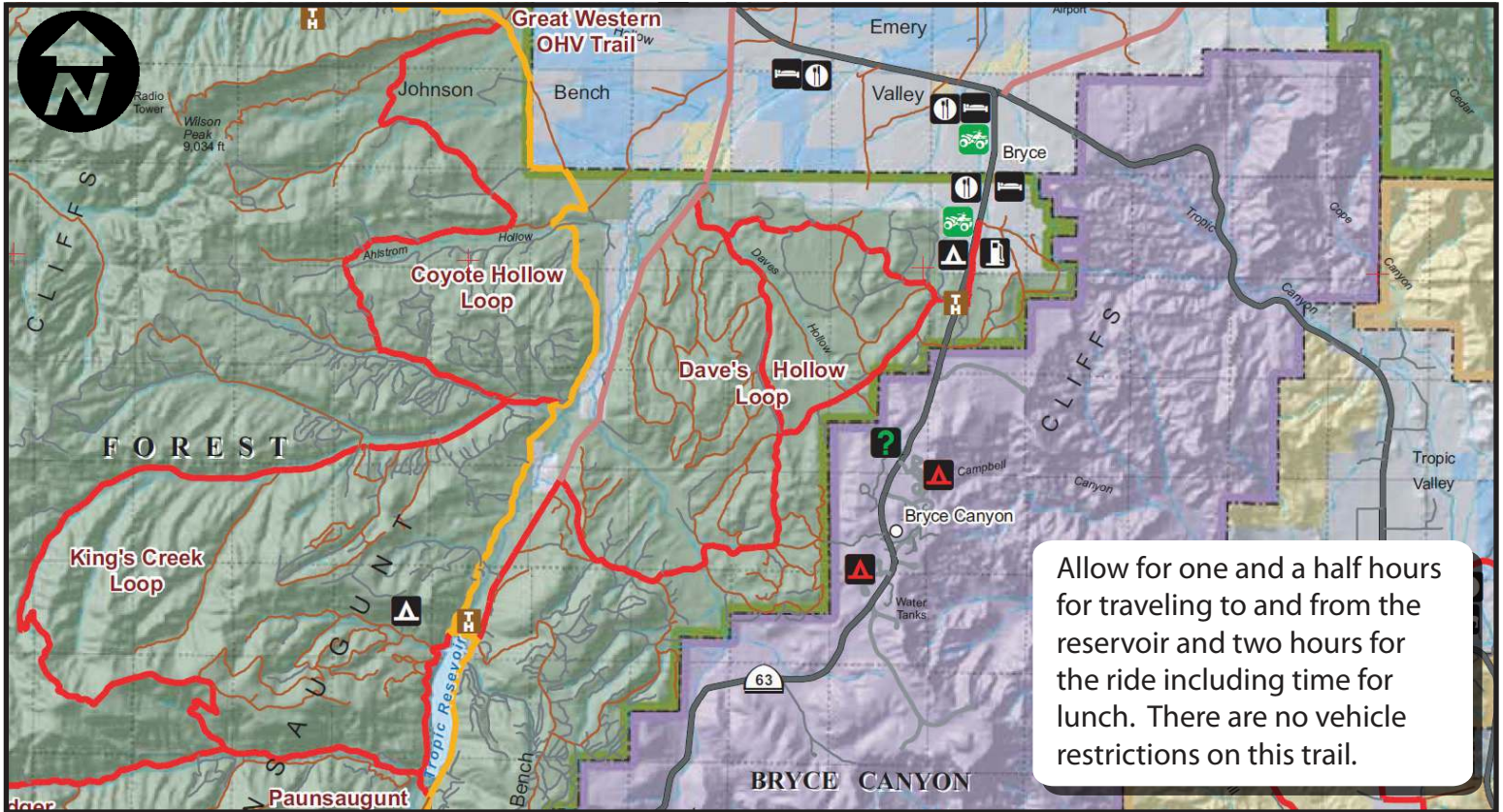


Kings Creek Loop



Riders will ascend to a high mountain range providing great panoramic views.



Skill Level - Intermediate

Riders will need to trailer their ATV's to Tropic Reservoir which is located 25 miles from Panguitch via US 89 and Scenic Highway 12 near Bryce Canyon National Park.



This is a shorter ride covering 20 miles which begins and ends at the Tropic Reservoir. Leaving the green meadows near Tropic Reservoir.

treadlightly!®

LEAVING A GOOD IMPRESSION



More information at www.BryceCanyonCountry.com and www.Utah-Trails.com