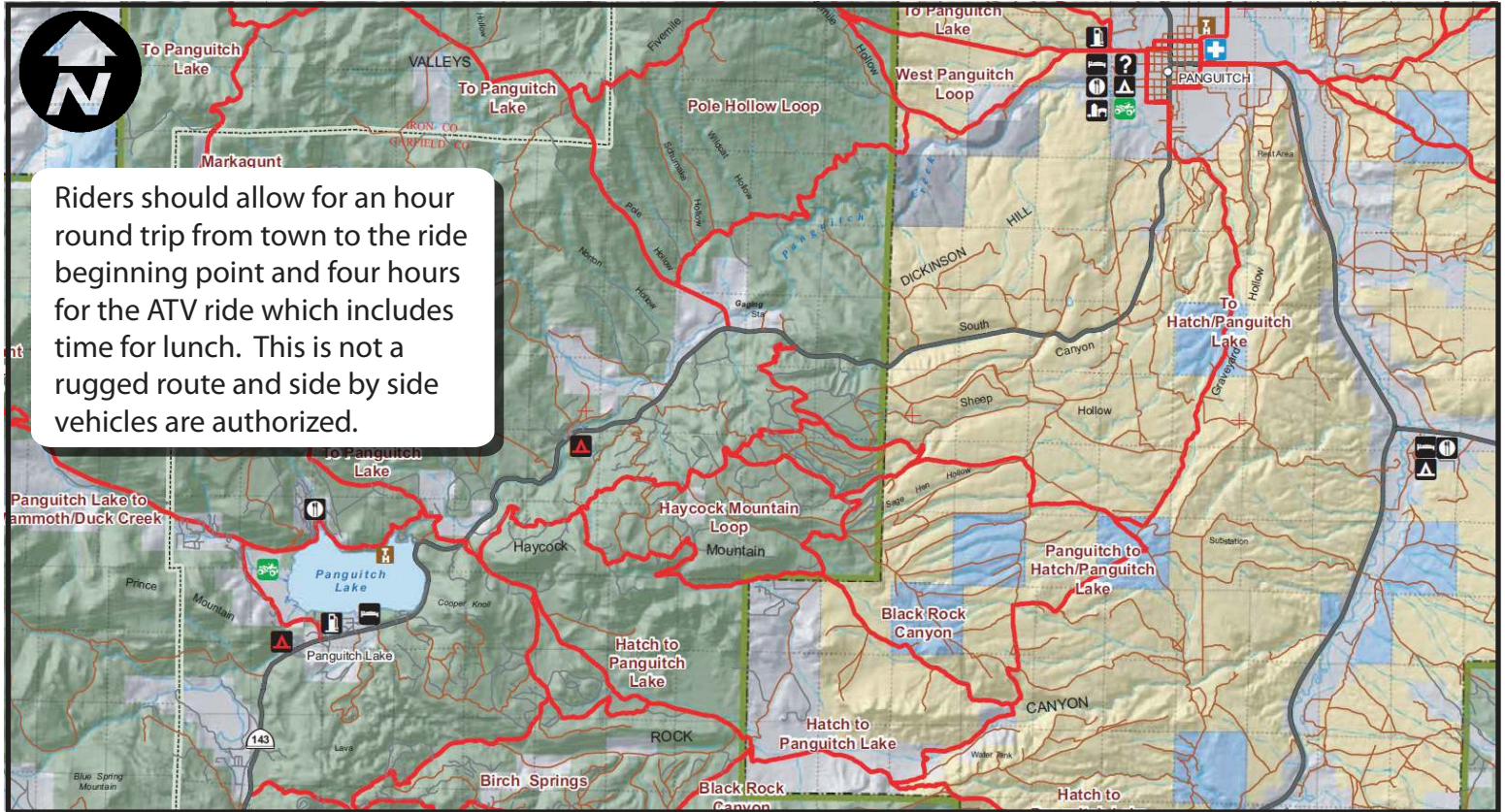


Pass Creek Loop



Scenic route that travels across sagebrush flats, into pine and quaking aspen forests and next to lava beds.



Riders should allow for an hour round trip from town to the ride beginning point and four hours for the ATV ride which includes time for lunch. This is not a rugged route and side by side vehicles are authorized.

Skill Level - Beginner

Riders must trailer ATV's up SR 143 (Panguitch Lake Road) to the Hatch Mountain turnoff near Panguitch Lake. Parking is located about a half mile East of the Panguitch Lake Road.



This trip is 27 miles long and there are numerous places to stop and survey the beauty along the way. This is a very dusty trail, so goggles, a bandana for your face and plenty of water to drink is encouraged.



More information at www.BryceCanyonCountry.com and www.Utah-Trails.com