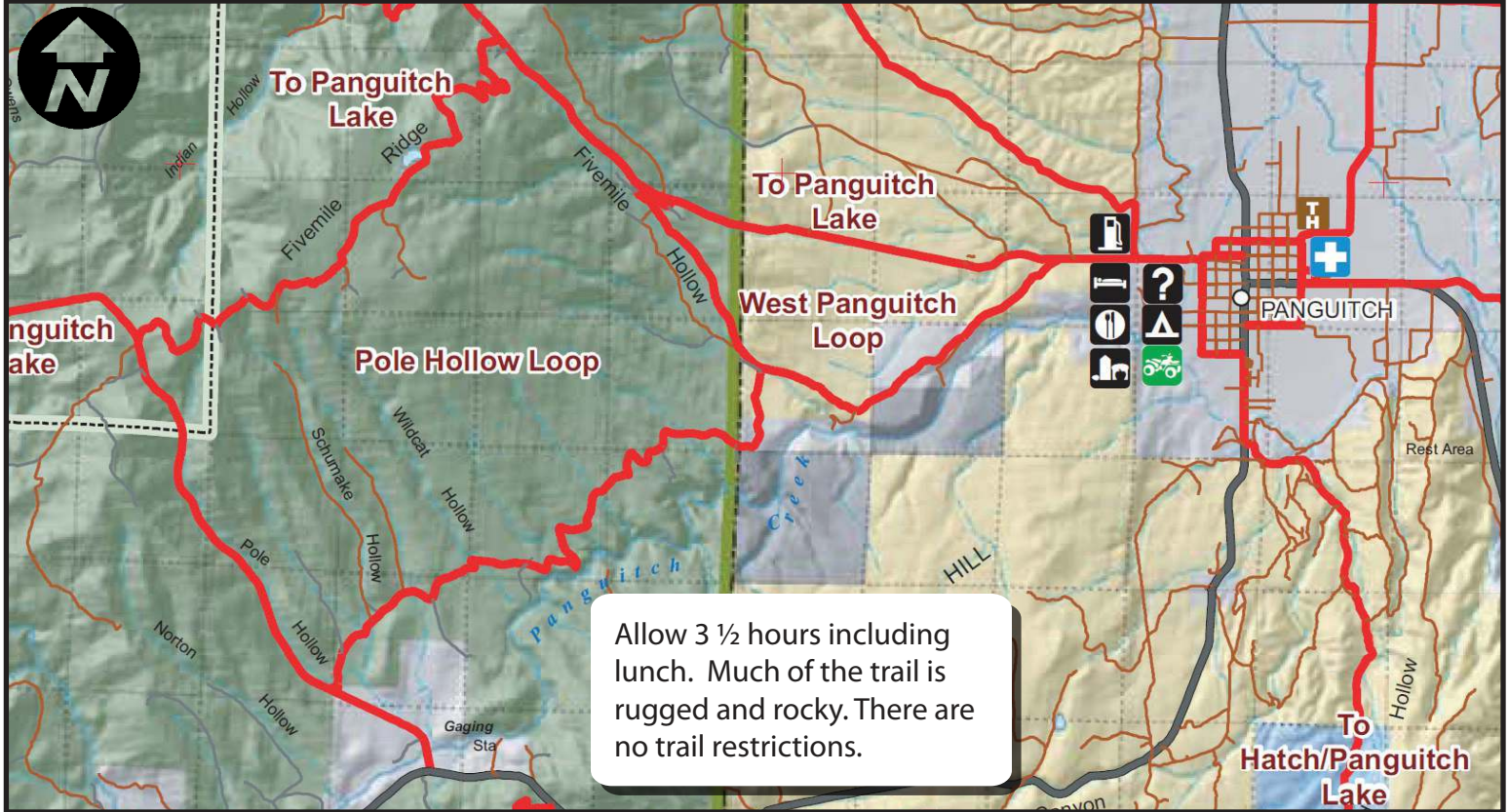


# Pole Hollow Loop



This trail passes through meadows and quaking aspen forests.



## Skill Level - Intermediate

This 26 mile long scenic trip begins in downtown Panguitch, heads West to Five Mile Ridge, crosses this very rocky summit then loops around through Little Valleys Road and ends back in town.



This ride provides many high mountain vistas and viewpoints to look out and take pictures from.

More information at [www.BryceCanyonCountry.com](http://www.BryceCanyonCountry.com) and [www.Utah-Trails.com](http://www.Utah-Trails.com)