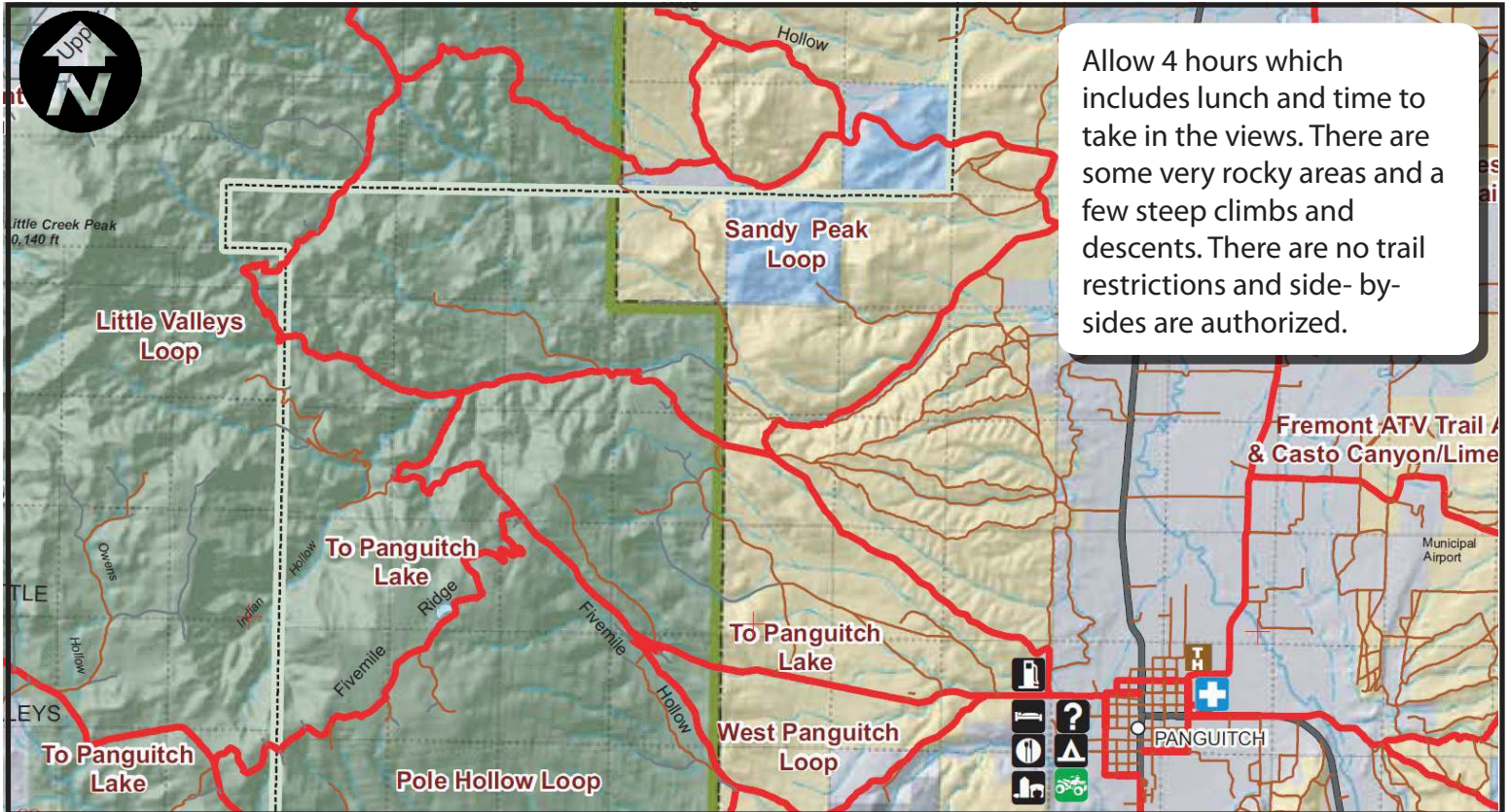


# Sandy Peak Loop



Ride through high mountain meadows and take in the different colors of wild flowers.



Allow 4 hours which includes lunch and time to take in the views. There are some very rocky areas and a few steep climbs and descents. There are no trail restrictions and side-by-sides are authorized.

## Skill Level - Intermediate

This ride begins and ends in Panguitch. Riders will enjoy a wide variety of scenery ranging from sage brush flats, to shallow water crossings, and dense forests, to high altitude vistas. The distance is 30 miles roundtrip.

