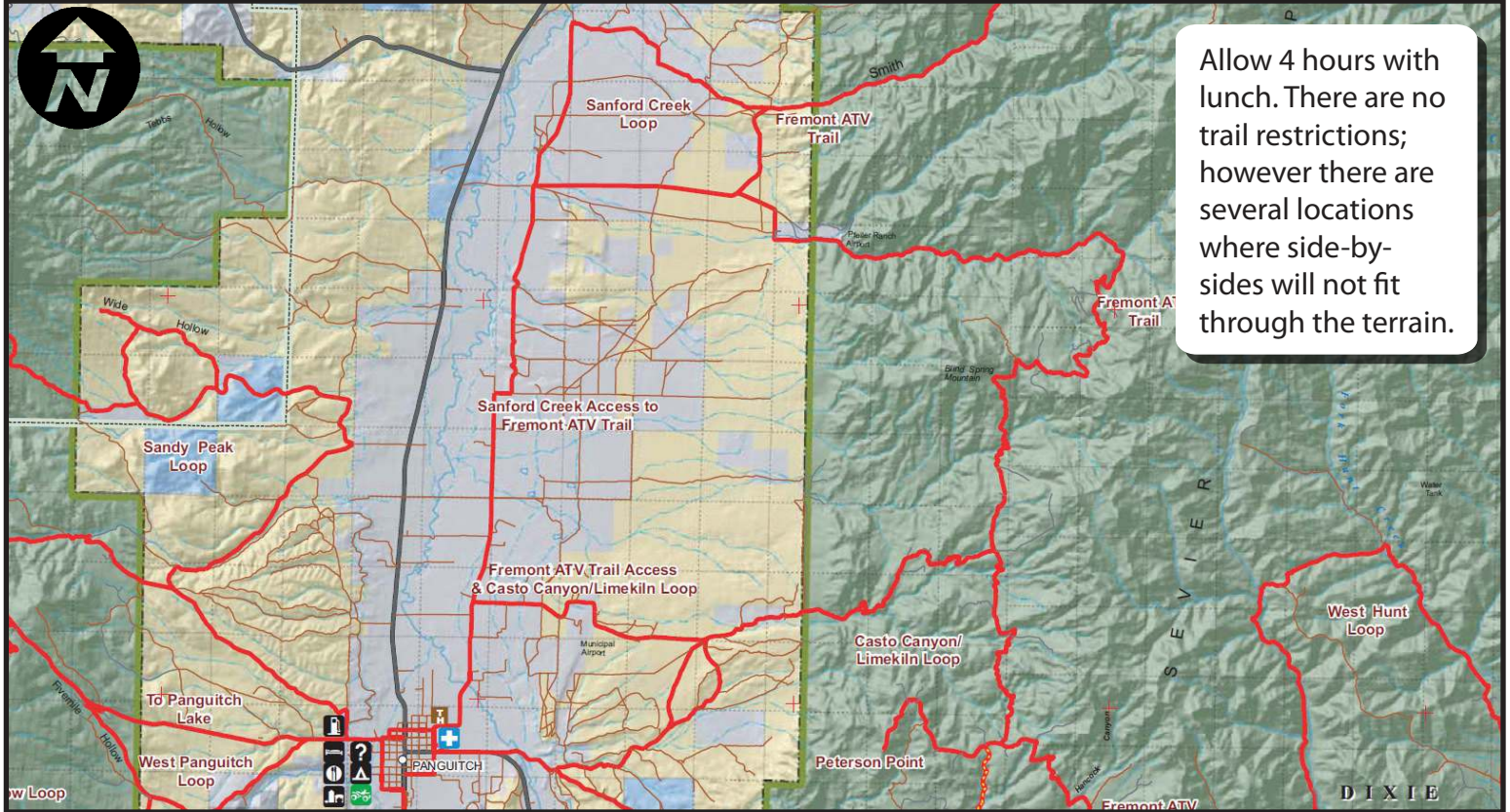


Sanford Loop



Enjoy forests, streams and red rock canyon walls.



Allow 4 hours with lunch. There are no trail restrictions; however there are several locations where side-by-sides will not fit through the terrain.

Skill Level - Intermediate

This picturesque ride begins in downtown Panguitch and heads east traveling through Limekiln and rising above the pink cliffs of Casto Canyon. There are many views to see and take pictures of. This ride covers 39 miles

