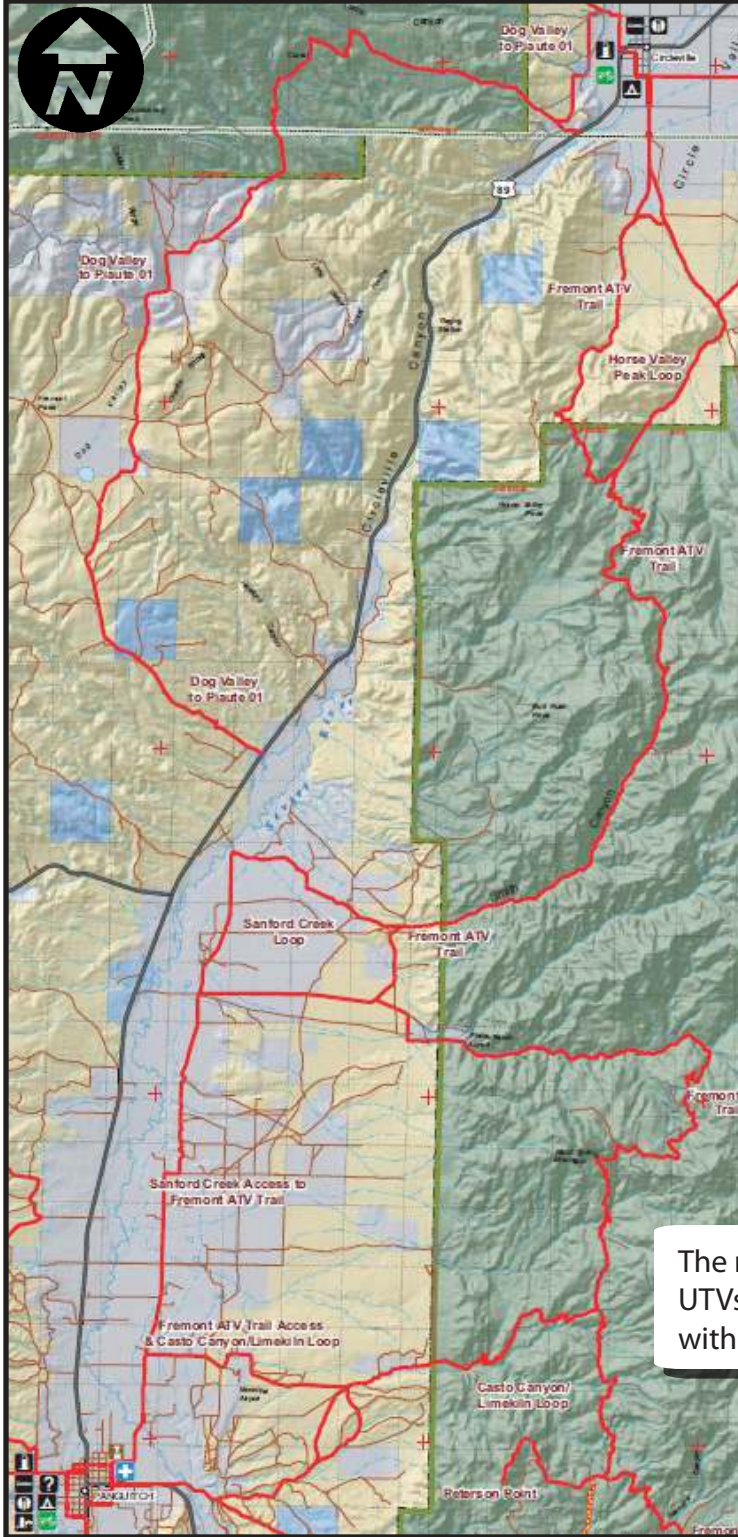


Casto Canyon/Limekiln Loop



A long scenic ninety mile loop from Panguitch to Circleville and back again.



Skill Level - Intermediate

A long scenic ride from Panguitch on a loop to Casto Canyon/Limekiln Loop and then intersect with the Fremont Trail. Then following the Fremont Trail to Circleville and stopping for burgers at the Butch Cassidy Restaurant. The return ride will be through Dog Valley, crossing Highway 89 and following the Sanford Creek Access back to Panguitch.



The ride is open to both ATVs and UTVs. The speed of this ride will vary with the trail conditions and scenery.



treadlightly!®
LEAVING A GOOD IMPRESSION



It would also be a good idea to have extra fuel as this is a 90 mile trail and Circleville is near the half way point.

More information at www.BryceCanyonCountry.com and www.Utah-Trails.com