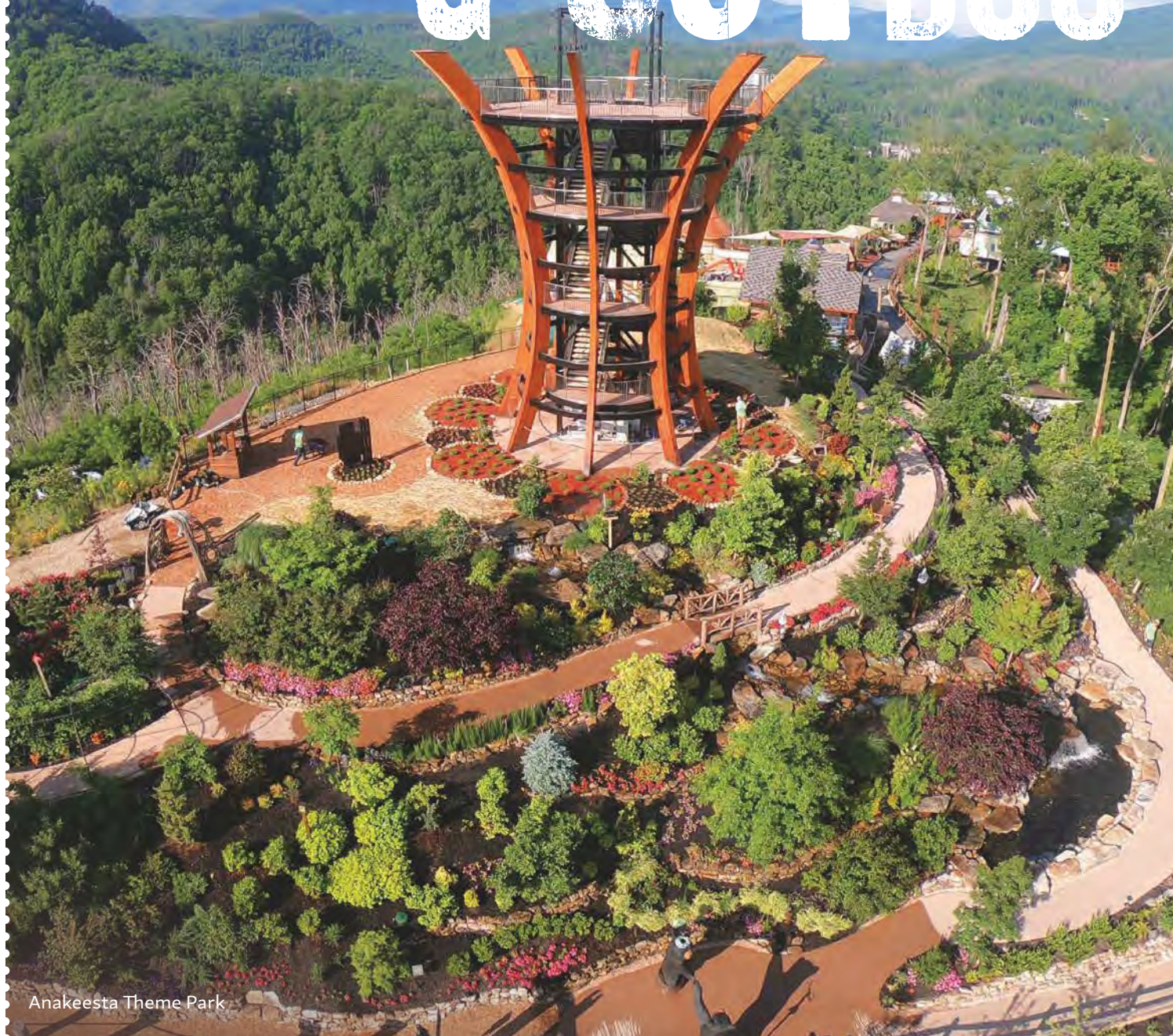


Attractions & OUTDOOR



Anakeesta Theme Park

RS



What Wonders Await

Taking it all in—and then some

Gatlinburg's always been a place where world-famous showstoppers and hole-in-wall treasures comfortably coexist. Everybody and their mother knows about Anakeesta and the Gatlinburg SkyLift. But it takes a true adventurer to discover, and appreciate, the hidden gems that dot our city limits. Take Hillbilly Golf for instance. It's, well... exactly like it sounds: random, kitschy, and one-of-a-kind. Trust us when we say it's not to be missed.

But the true beauty—and we mean that quite literally—of Gatlinburg is our expansive outdoors. From guided hikes to horseback riding through the wilderness of the Smoky Mountains, wild Trout fishing with professional anglers, and river rafting, Gatlinburg offers one of the best opportunities east of the Mississippi to explore the great outdoors as Mother Nature intended. If you've been itching to get out of the house and do some serious exploring all within easy reach of civilization, you'd be hard pressed to do better.

When it comes to mapping out your ultimate itinerary, the Attractions Listings pages will be your new best friend. Our advice? Start slow. Dream big. And work your way from the A's all the way down to the Z's—or, in our case, the W's. By the time you hit whitewater rafting, you'll practically be a local.

ATTRactions & OUTDOORS



Ripley's Believe It or Not!®

For some fantastical, far-fetched (literally) fun, don't skip Ripley's Believe It or Not! Museum. Three floors of strange and wonderful oddities, collected from around the world, are waiting to be discovered. Get lost in one of the two new escape rooms or blast your way through a themed laser tag course and 18-holes of mini golf that challenge even the steadiest of hands. Or, spend an afternoon (or the whole day) shooting, putting, and pin-balling till your totally tubular heart's content. It's fun for the whole family that doesn't require a 10-mile hike. We can get down with that.

Trout's big game here in Gatlinburg. In fact, some of the best trout fishing you'll find in all of Tennessee happens right here in our neck of the woods. To fish in our streams, make sure you have the proper identification and licensing. The city maintains a trout farm and stocks the West Prong of the Little Pigeon River through the middle of town every Thursday. If you plan to cast a line in city limits, check out the kids only fishing streams in Mynatt Park and Herbert Holt Park, where there is a handicapped fishing pier. Looking for back country fishing holes? Enlist the help of our local guide services. They'll show you where to drop a line.



Smoky Mountain Angler

A WALK IN THE WOODS

4413 Scenic Drive East
(865) 436-8283
awalkinthewoods.com

Discover the treasures of the Great Smoky Mountains with the only REI Top Guides in the East. Guided nature walks, day hikes, overnight trips, shuttle service, equipment rental and more. Permitted and insured. Since 1998

AMAZING GATLINBURG RACE

524 Parton Drive
(865) 436-1630
amazinggatlinburg.com
Adventure race attraction for teams, families and groups. The competitors will utilize a combination of problem solving skills and physical prowess to win the race through downtown Gatlinburg.

AMAZING MIRROR MAZE

919 Parkway
(865) 436-4415
mirrormazegatlinburg.com
The hottest attraction on the Parkway! Don't miss Gatlinburg's largest mirror maze featuring a spectacular light and sound show! Bring your camera and enjoy this Gatlinburg favorite!

ANAKEESTA

576 Parkway
(865) 325-2400
anakeesta.com
A magical world in the treetops awaits! Explore 70+ acres of adventure and relaxation at Anakeesta, Tennessee's award-winning outdoor family theme park for guests of all ages!

APPALACHIAN GHOSTWALKS

Downtown
(423) 743-9255
GatlinburgGhostWalks.com
Appalachian GhostWalks' lantern-led, haunted historic Gatlinburg GhostWalk operates nightly departing from TGI Fridays on the Parkway presenting Great Smoky Mountain history and mystery! 🐾



Sally the Sea Turtle

ARCADIA

115 Historic Nature Trail
(865) 436-5650
gatlinburgarcade.com
Visit Arcadia below the Gatlinburg Space Needle for family fun, food, and entertainment! This 25,000 square foot Family Entertainment Complex features over 100 of the latest games, amusements, and the area's largest prize center.

CAR & JEEP RENTALS

1011 East Parkway
(865) 436-9811
southlandcarjeeprental.com
Jeep Wrangler 4x4, and 4 door Wranglers! Open 8am-7pm April through October. 9am-6pm November through March. January through March Sunday's by appointment.

CHRIST IN THE SMOKIES MUSEUM AND GARDENS

510 River Road
(865) 436-5155
christinthesmokies.com
The Nation's foremost inspirational attraction. Featuring incredibly realistic life-size scenes in the story of Christ in dramatic settings. Awe-inspiring "Face of Christ" sculpture that seems to follow your every movement. Inspirational gift shop.

CIRCUS GOLF...IN 3D

919 Parkway
(865) 436-4415
circusgolfgatlinburg.com
Special FX blacklight golf, ½ circus fun house, ½ mini golf, 100% fun! 18 holes featuring computer animation, special effects and animatronic characters! It's "big top" fun for everyone!

EARTHQUAKE - THE RIDE

653 Parkway
(865) 436-9765
Experience the real thing in a catastrophic, live action adventure ride loaded with high-tech special effects. A thrill ride for all ages.

FANNIE FARKLE'S

656 Parkway
(865) 436-4057
fanniefarkles.net
Often copied, never duplicated! Best family fun, food, prizes and games in Gatlinburg. We offer the friendliest service and cleanest restrooms. ATM on premises. Home of foot long Ogle Dog! Our new Electronic Game Card allows players to swipe, play games and save their points that never expire.

GATLINBURG AERIAL TRAMWAY

1001 Parkway, Suite 2
(865) 436-5423
obergatlinburg.com
Enjoy spectacular views year-round from aboard the 120 passenger Aerial Tramway. Departs regularly from downtown Gatlinburg to Ober Gatlinburg Ski Area and Amusement Park on the mountain. Featuring a full restaurant, lounge, shopping and activities for the entire family to enjoy together.

GATLINBURG MOUNTAIN COASTER

306 Parkway
(865) 430-5577
gatlinburgmountaincoaster.com
A unique, family-friendly thrill ride. It curves and winds through the woods and down the mountain. Control your own speed in single or double rider carts. Fun for all ages! Open year-round.

GATLINBURG PINBALL MUSEUM

205 Historic Nature Trail
(865) 430-9947
gatlinburgpinballmuseum.com
Visit the Gatlinburg Pinball Museum to play the largest collection of pinball machines and retro arcade games in the Smokies!

GATLINBURG SKYLIFT PARK

765 Parkway
(865) 436-4307
gatlinburgskylift.com
The Gatlinburg SkyLift Park is home to the Gatlinburg SkyBridge: North America's longest pedestrian suspension bridge. Take the yellow SkyLift chairs to the top of the mountain and enjoy the views! 🐾

GATLINBURG SPACE NEEDLE

115 Historic Nature Trail
(865) 436-4629
gatlinburgspaceneedle.com
Ride the glass elevators over 400 feet and step out to a breathtaking 360-degree view of the Smokies by day or Downtown Gatlinburg's lights by night. Enjoy historical educational markers, free viewfinders, and benches to relax and take in the scenery.

GATLIN'S ESCAPE GAMES

716 Parkway, Suite 214
(865) 436-2326
gatlinsecapegames.com
Solve puzzles, crack codes and conquer challenges in order to escape within an allotted timeframe. One of a kind, three unique themed rooms feature props, lighting and sound effects. Most don't escape!

GATLIN'S LASER TAG AND MORE

716 Parkway
(865) 436-2326
gatlinfuncenter.com
Laser Tag, Escape Rooms, Bumper Cars, Laser Maze and more. Located next to Gatlin's Mini Golf. Great combo packages allowing you to do it all for one low price.

GATLIN'S MINI GOLF

716 Parkway
(865) 430-4653
gatlinfuncenter.com
Gatlinburg's largest indoor and outdoor mini golf attraction with three amazing courses. Glow in the dark blacklight indoor course. Plus enjoy the two award-winning, storytelling outdoor courses.

GATLIN'S RUGGED ROPES COURSE

716 Parkway, Suite 219
(865) 436-2326
gatlinfuncenter.com/ropes-course
Come take towards the sky on our brand-new high ropes adventure course! Adventurers, while safely harnessed in an overhead track, will be able to climb three stories in the air to face thirty-eight challenges including rickety bridges, suspended ropes and other balancing obstacles.



Schoolhouse Gap Trail

HILLBILLY GOLF

340 Parkway
(865) 436-7470
Located on Parkway in Gatlinburg. Ride the incline 300 feet above the city. Play the world's most unusual miniature golf. Two 18-hole courses with challenging mountaineer hazards. Fun for everyone.

HOLLYWOOD STAR CARS MUSEUM

914 Parkway
(865) 430-2200
starcarsn.com
See more than 40 real Hollywood movies and TV cars. Featuring the best of Hollywood movie, TV, and real life music superstar cars displayed in recreated sets with sound, lights and action.

MYSTERIOUS MANSION OF GATLINBURG

424 River Road
(865) 436-7007
gatlinburgsmysteriousmansion.com
Gatlinburg's Oldest and Scariest Haunted House! Find your way through secret passageways in a terrifying, self-guided tour of our three-story Haunted Mansion! IF YOU DARE! Great prices!

OBER GATLINBURG SKI AREA & AMUSEMENT PARK

1339 Ski Mountain Road
(865) 436-5423
obergatlinburg.com
Ride the Aerial Tramway to Ober Gatlinburg. Summer Tubing, Wildlife Encounter, Coaster, Ice Bumper Cars, Alpine Slide, Scenic Chairlift and Ice Skating equals year-round fun for everyone! Winter Snow Skiing, Snowboarding, Snow tubing, Shops, full-service restaurant & lounge and more!

RIPLEY'S AQUARIUM OF THE SMOKIES

88 River Road
(865) 430-8808
ripleysaquariumofthesmokies.com
Best Aquarium in North America by USA Today 10Best.com! Spectacular underwater tunnel with 12-foot sharks, giant sea turtle and thousands of exotic sea creatures! Playful penguins, dive/feeding shows, touch stingrays, horseshoe crabs, jellyfish and more!

RIPLEY'S BELIEVE IT OR NOT!

800 Parkway
(865) 436-5096
ripleysgatlinburg.com
New Ripley's Believe It or Not! is back better (and stranger) than ever! See the weirdest and most remarkable items from around the world! Full of Unique Exhibits, Fun Interactives, Crazy Art, Incredible People, Animals and Creatures plus more.

RIPLEY'S DAVY CROCKETT MINI-GOLF

188 Parkway
(865) 430-8851
ripleysgatlinburg.com
Gatlinburg's most entertaining mini-golf! 36 times the fun for the entire family! Two amazing 18-hole, state-of-the-art golf courses with interactive displays and animated animals. All New Spinner Course Challenges! Free parking or ride the trolley.

RIPLEY'S HAUNTED ADVENTURE

908 Parkway
(865) 430-9991
ripleysgatlinburg.com
You're Never Alone in the Dark! Frights and Fun for Everyone! New hauntings, special effects and live actors! Bring family and friends... there's safety in numbers!



Ober Gatlinburg Aerial Tram

RIPLEY'S MARVELOUS MIRROR MAZE & CANDY FACTORY

623 Parkway
(865) 430-1834
ripleysgatlinburg.com
Being Lost has Never Been So Fun! Surprising corners, dead ends, continuous circles and rotating mirrors! Strike your pose and See infinite reflections in every direction in the Infinity Room!

RIPLEY'S MOVING THEATER

904 Parkway
(865) 436-9763
ripleysgatlinburg.com
Powered by Real D 3D as used in "Despicable Me 3", "Transformers: The Last Knight" & many more! Feel every bump, dip & turn! State-of-the-art motion simulator! Ride the movie, feel the rush!

RIPLEY'S PENGUIN PLAYHOUSE

88 River Road
(865) 430-8808
ripleysaquariumofthesmokies.com
Voted best place to see penguins by USA Today! Enjoy penguins swimming, pop up on the penguins' beach and get nose-to-beak! Want a unique experience? Enjoy a Penguin Encounter and Penguin Painting Program!

RIPLEY'S SUPER FUN ZONE

542 Parkway
(865) 430-8851
ripleysgatlinburg.com
Play the best state-of-the-art video games! Try your luck at one of the many fun redemption games! Win the coolest prize in town! Go Green with game swipe cards!

ROWDY BEAR MOUNTAIN ADVENTURE PARK

386 Parkway
(865) 409-5045
rowdybearmountain.com
Glide through the treetops on the Worlds, First Single Railed Mountain Glider. Purchase a One Hour Alpine Coaster Wristband at Gatlinburg's #1 rated Theme Park. Free parking.

SMOKY MOUNTAIN ANGLER

469 Brookside Village Way
Winery Square
(865) 436-8746
smokymountainangler.com
Oldest authorized guide program in Sevier County. Perfect for beginning and experienced anglers. Our guides will show you techniques required to catch wild mountain Trout. Wade and float trips available.

SUGARLANDS RIDING STABLES

1409 Parkway
(865) 436-3535
sugarlandsridingstables.com
See wildlife on scenic wilderness trails climbing along streams inside the National Park. Open mid-March through Thanksgiving weekend. Hours are seasonal.

THE CAPTURED - A LIVE ESCAPE EXPERIENCE

112 Reagan Drive
(865) 430-7844
thecaptured.com
The Captured - A Live Escape Experience. Solve clues, puzzles, and trap doors to escape and survive the experience! Will you escape before time runs out?

THE SALT & PEPPER SHAKER MUSEUM

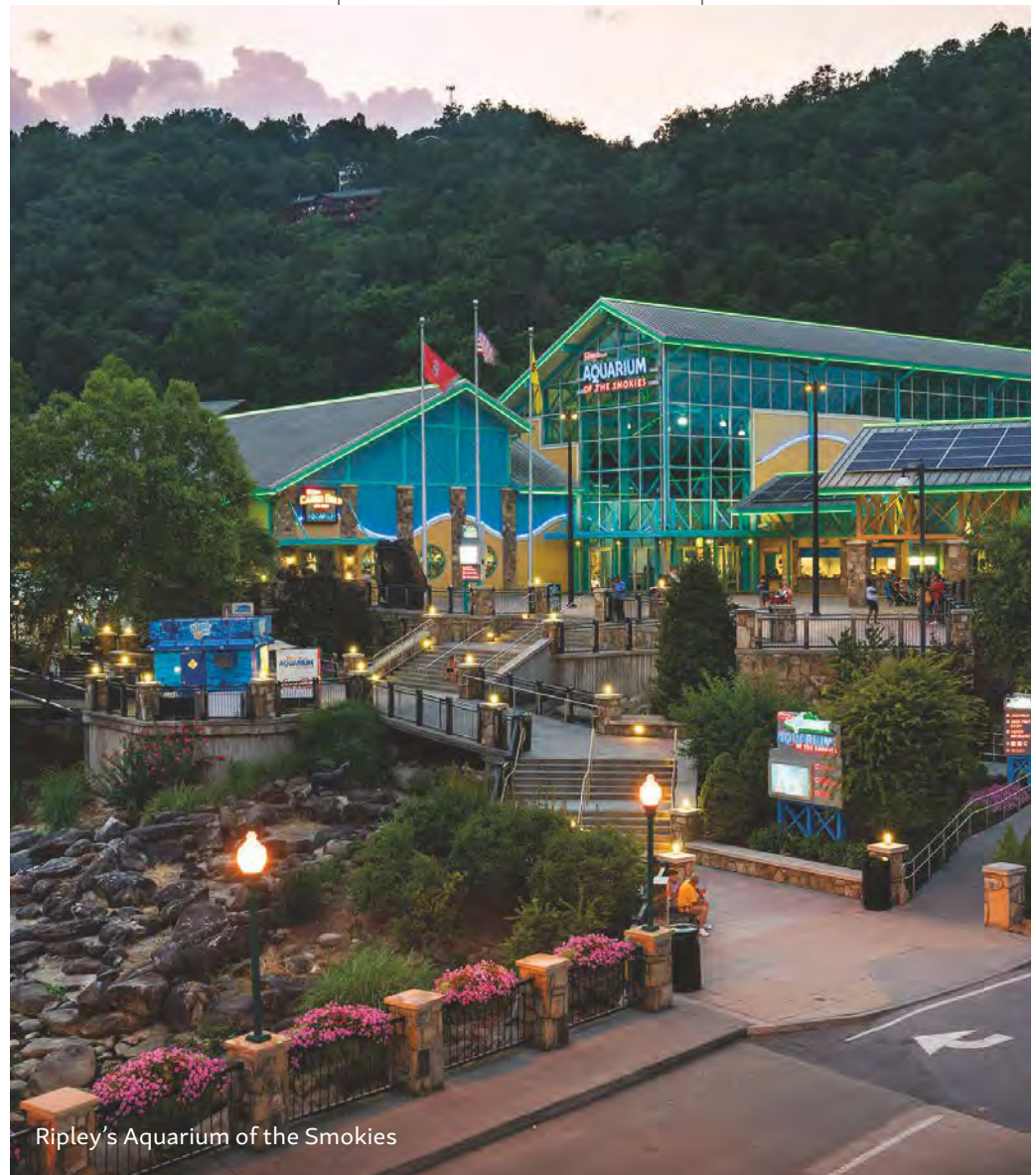
461 Brookside Village Way
(865) 430-5515
thesaltandpeppershakermuseum.com
Visit the only museum of its kind with over 20,000 sets of shakers in all sizes, shapes and materials. The gift shop features 2,000 shakers for sale, your one stop shop for those hard to buy for! 🐾

TREASURE QUEST GOLF

653 Parkway
(865) 436-3972
A championship 18-hole indoor golf course filled with unusual and spectacular scenes. Check out the new black-light section! It's fun and challenging for all ages.

WESTGATE WILD BEAR FALLS WATER PARK

915 Westgate Resort Road
(865) 430-4800
wildbearfalls.com
Mountain-themed, year-round indoor water park features state-of-the-art retractable roof and 60,000 square feet of waterslides, hot tubs, lazy river, zero-entry pool, toddler play area, tree house play structure and restaurant. 🐾



Ripley's Aquarium of the Smokies



Ober Gatlinburg Ski Area & Amusement Park

WORLD OF ILLUSIONS

716 Parkway, Suite 206
(865) 436-9701

The world's largest exhibition of action-packed Grand Illusions. Make a friend disappear, become a Genie in a bottle, walk away from your own shadow and much, much more.

GOLF COURSE

GATLINBURG GOLF COURSE

520 Dollywood Lane
(865) 453-3912

golf.gatlinburg.com

Acclaimed to be one of the most scenic courses in America with breathtaking views of the Great Smoky Mountains. Established in 1955. 18 holes ranging between 4,000 and 6,300 yards in length. Open 7 days a week.

LIVE ENTERTAINMENT

IMPOSSIBILITIES - MAGIC, MINDREADING & MAYHEM

115 Historic Nature Trail

(888) 482-3330

iristheater.com

Impossibilities - Magic, Mindreading & Mayhem! Located at the Iris Theater in the lobby of the Gatlinburg Space Needle, Impossibilities is a magic and mind-reading show starring Master Mentalist Erik Dobell.

GATHER UP EVENTS

Gatlinburg Convention Center
234 Historic Nature Trail

(423) 584-3513

gatherupevents.com/smoky-mountain-bigfoot-conference/

Join Gather Up Events for the third annual Smoky Mountain Bigfoot Conference on July 24, 2021, at the Gatlinburg Convention Center for an all-day fun event featuring the legendary Bigfoot.

GATLINBURG CRAFTSMEN'S FAIR

Gatlinburg Convention Center

234 Historic Nature Trail

(865) 436-7479

craftsmenfair.com

July 9-18 and October 7-24, 2021.

More than 200 of the nation's finest artists and craftspeople under one roof at the Gatlinburg Convention Center. 10 am-6 pm daily, 10 am-5 pm Sunday. Optional multi-day admission passes available. Children 12 and under admitted for free.

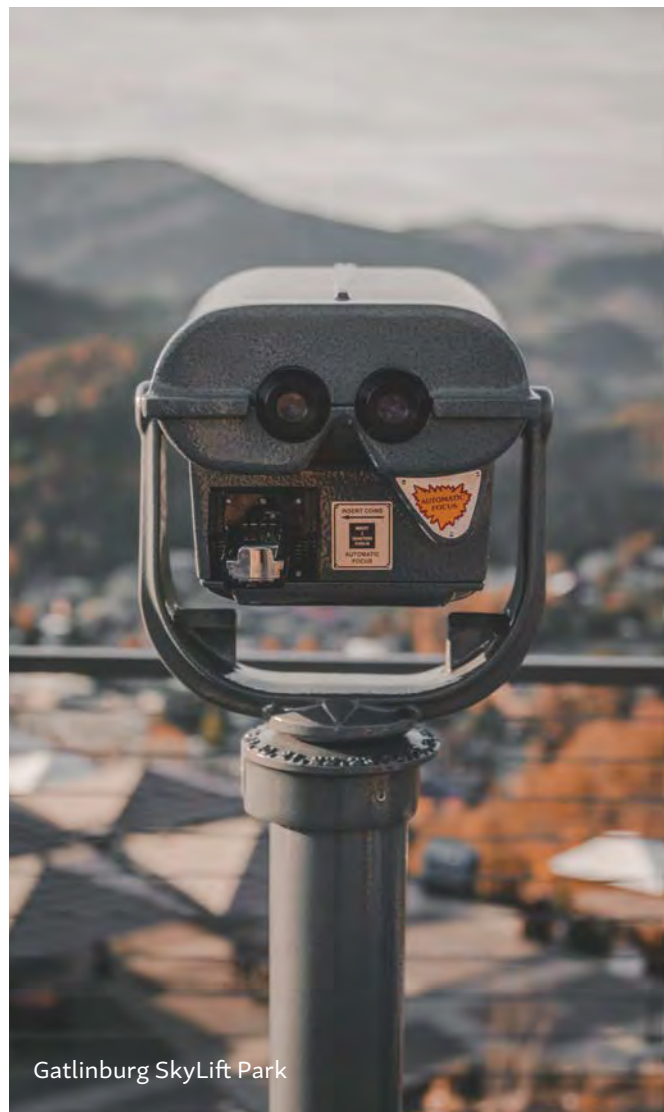
GATLINBURG FARMERS MARKET

1222 East Parkway

(865) 640-7190

gatlinburgfarmersmarket.com

Experience locally grown foods, live crafts demonstrations and toe tapping mountain music, Saturdays 8:30 am to 12:00 pm, May through October. Open air market. Enjoy the taste of the mountains! Lettuce get fresh with you!



Gatlinburg SkyLift Park



Hollywood Star Cars



Map Location 71



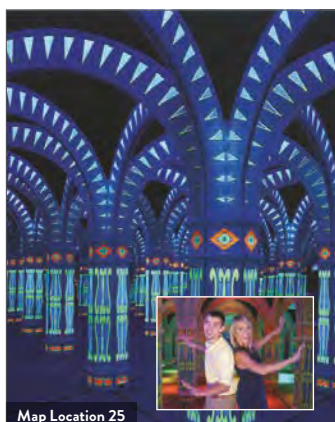
ANAKEESTA
there's magic in the mountains

Discover a mountain of family fun! General admission includes all day park access with unlimited scenic Chondola and Ridge Rambler rides. Climb AnaVista Tower to see 360-degree mountain views. Play, slide and climb at TreeVenture Challenge Course. Walk through the tree canopy on the Treetop Skywalk or discover lush meandering trails and places to play and relax in Vista Gardens. Add on adventure and soar on the Rail Runner mountain coaster then, zip our award-winning dueling zipline course. End your journey with a delicious meal at Cliff Top or Smokehouse then enjoy a tasty treat or cold brew and relax by the fire pit as you enjoy the breath-taking mountain views. A magical world awaits at AnaKeesta!



576 Parkway, Traffic Light #5
Gatlinburg, TN 37738

865-325-2400 • Anakeesta.com



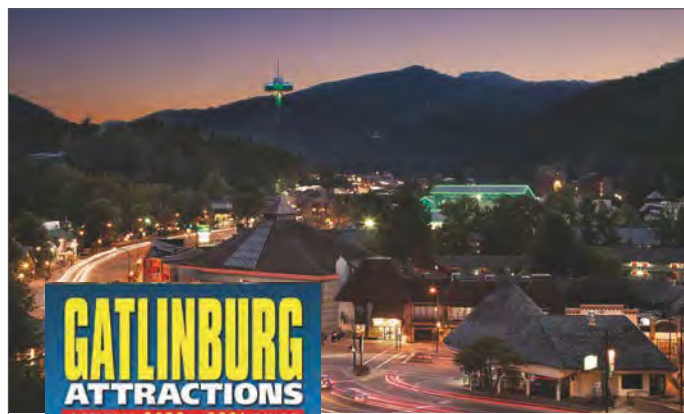
Map Location 25



Gatlinburg's First & Largest Mirror Maze! Featuring a State-of-the-Art Light and Sound Show. It's Fun for all Ages. Take Incredible Pics. Handicap/Stroller Accessible. Open Daily, all year. You Won't Believe Your Eyes!

919 Parkway, Gatlinburg, TN 37738

865-436-4415 • mirrormazegatlinburg.com



GATLINBURG
ATTRACTIONS
OFFICIAL 2020 - 2021 GUIDE
WHERE GREAT ADVENTURES
ARE WAITING TO BE DISCOVERED



GATLINBURG
ATTRACTIONS

The Gatlinburg Attractions Guide is your map for making memories. There is so much to do all year in Gatlinburg! Discover award-winning attractions and experiences of all kinds. Plan ahead by visiting us online or pick up a Gatlinburg Attractions Guide at over 500 locations.

You might want to get off the beaten path with guided outdoor tours, or stroll the Parkway for mountaintop adventure destinations, entertainment, museums, interactive games, and the number one Aquarium in the Smokies.

Answer the question "What do we do next?" with the Gatlinburg Attractions Guide!

Attractions-Gatlinburg.com



Map Location 61



Visit Arcadia below the Gatlinburg Space Needle for family fun, food, and entertainment for everyone! This 25,000 square foot Family Entertainment Complex features over 100 of the latest games, amusements, and the area's largest prize center. The super-sized arcade has something for everyone and gives ample opportunities to Win Big! Save your tickets for bigger prizes - they never expire!

115 Historic Nature Trail
Gatlinburg, TN 37738

865-436-5650 • gatlinburgarcade.com



Map Location 25



1/2 Circus Funhouse, 1/2 Mini-Golf, 100% Fun! Interactive, Computer Animations, Animatronic Characters and Sound Effects. 18 holes of Family Fun! It's indoors, so it's Cool in Summer, Warm in Winter. A Hole-in-One gets a Special Celebration Song on the 18th Hole!

919 Parkway, Gatlinburg, TN 37738

865-436-4415 • circusgolfgatlinburg.com



Map Location 23

Christ⁺ Museum & Gardens

Dramatic scenes presenting the Life of Christ. Realistic life-size figures and state-of-the-art music and special effects. Awe-Inspiring "Face of Christ" sculpture. Inspirational Gift Shop. Open all year - rain or shine. Kids FREE (12 and Under)

510 River Road, Gatlinburg, TN 37738

865-436-5155 • christinthesmokies.com



Map Location 67



"Come For the Food, Stay For the Fun!"

Often Copied, Never Duplicated! We are celebrating our 40th Anniversary with the largest selection of Games & Prizes in town and the Original Foot-Long Ogle Dog, Sausage Subs and Cheesesteaks, too! Indoor ATM available - Open 365 Days.

PO Box # 42 • 656 Parkway
Gatlinburg, TN 37738

865-436-4057 • FannieFarkles.net



Map Location 47

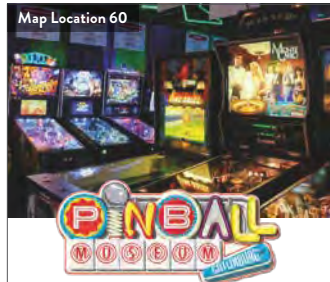
GATLINBURG Craftsmen's Fair

200 Booths of Artists and Craftsmen All Under One Roof! Artisans demonstrate, personalize, or customize. All Handmade Crafts. Music Shows Daily Included. Find the best, most unique items for gifts or for yourself. All handcrafted in the USA.

Join us July 9-18, 2021 & October 7-24, 2021.

234 Historic Nature Trail at Traffic Light #8
Gatlinburg, TN 37738 at the Convention Center

865-436-7479 • CraftsmenFair.com



Map Location 60

Visit the Gatlinburg Pinball Museum to see and play the largest collection of pinball machines in the Smokies!

205 Historic Nature Trail, Gatlinburg, TN 37738

865-430-9947
gatlinburgpinballmuseum.com



Map Location 21

GATLINBURG SKYLIFT PARK

See the Wonders of the Smokies in an Unforgettable Way—From Above the Clouds.

Let us take your breath away as you walk above the clouds and see the Smokies from the best vantage point in Gatlinburg. At the SkyLift Park, atop Crockett Mountain, you can cross the longest pedestrian suspension bridge in North America as it stretches 680 feet across a deep valley with 30 feet of glass panels at its midpoint, ride the iconic SkyLift, walk the new SkyTrail, relax on the spacious outdoor SkyDeck, shop, and have a snack or cold drink in the expansive bar while enjoying the best views in the world, day or night.



Save on tickets at GatlinburgSkyLift.com



Map Location 63

Gatlin's ESCAPE GAMES

Solve puzzles, conquer challenges, while experiencing adrenaline pumping surprises around every corner. Work together in a 60-minute race against the clock to escape one of our four unforgettable adventures.

THE LEGEND OF ATLANTIS An epic, story-driven journey that puts you in the middle of an Indiana Jones, Hollywood style adventure.

MOONSHINE HILL HOOTENANNY You'll hafta be crafty to break into Maw's shack and blow her 'shine still to smithereens!

HAUNTING OF HYDE HOUSE Abandoned by your tour guide, you'll become trapped in the historic Hyde House and discover you are not alone.

MASTERS OF MAGIC Enter into the Realm of Illusions, a mystic venue known as the "other side of magic," where truly powerful magic takes place.

716 Parkway, Gatlinburg, TN 37738

865-415-4055 • gatlinsescapegames.com



Map Location 65



Game on in our 3000 sq. foot Laser Tag arena! Gatlin's provides high-quality fun for everyone in your family or group, no matter the age!

716 Parkway, Gatlinburg, TN 37738

865-412-4173
gatlinlasertag.com

Map Location 64



Come take towards the sky on our Rugged Ropes Adventure course! Adventurers, while safely harnessed, will climb three stories and face 38 fun challenges!

716 Parkway, Gatlinburg, TN 37738

865-415-4093
gatlinfuncenter.com

Map Location 65



Come play a timeless game in a timeless place! Gatlin's Mini Golf is the area's largest miniature golf destination, offering 45 holes of fun!

Play two 18 hole, award-winning, outdoor miniature golf courses set on a unique, historic, and serene hillside. Travel back in time and learn about Gatlinburg's history as each hole tells you the story of the area's first settlers and fascinating past.

Rain or shine, play our 9 holes of indoor Black Light Golf in an underwater adventure!

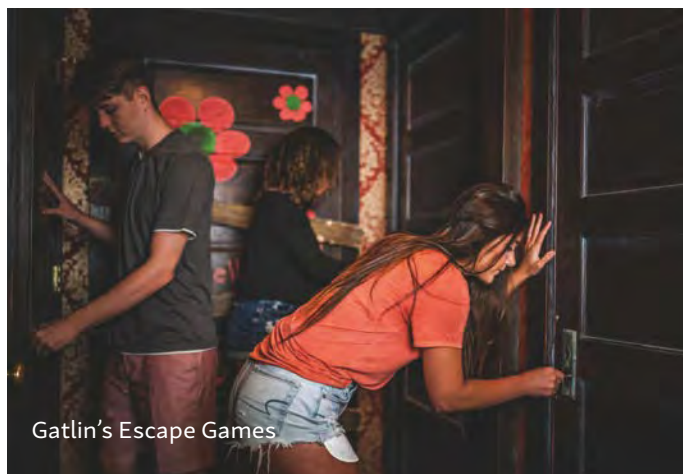
Ask about our Unlimited Golf Pass, and golf your entire vacation, which is an unbeatable deal!



716 Parkway, Gatlinburg, TN 37738

865-412-7054 • gatlinminigolf.com

Gatlin's Escape Games



Ride to the Top!

Ride the glass elevators over 400 feet and step out to a breathtaking 360 degree view of the Smokies by day or Downtown Gatlinburg's lights by night. Enjoy historical educational markers from the Gatlinburg Space Needle's perspective. Includes free viewfinders and benches to relax and take in the scenery. Bring in 2020 at Downtown Gatlinburg's New Year's Eve Ball Drop and Pyrotechnics Show on December 31st at the Gatlinburg Space Needle.

115 Historic Nature Trail
Gatlinburg, TN 37738

Map Location 61

865-436-4629 • gatlinburgspaceneedle.com

HILLBILLY GOLF

Ride the Incline. 300 feet above the city. Two 18-hole courses with challenging mountaineer hazards. Open early spring until late fall. Great fun and excitement for everyone. Group rates available

On the Parkway, Gatlinburg, TN 37738

865-436-7470



Map Location 6



Over 45 vehicles from your favorite Movies, TV and Superstars. Featuring The Fast and the Furious Collection and the best of Hollywood's King of Kustomizers, George Barris.

Find us on Facebook

914 Parkway, Gatlinburg, TN 37738

865-430-2200 • hollywoodstarcarsmuseum.com

Map Location 46



Map Location 13



Gatlinburg's oldest and most terrifying haunted house! Find your way through secret passageways! Live scares, delightfully disturbing decor! Scaring Smoky Mountain visitors since 1980! To find us - Walk behind McDonald's through Towne Center Plaza and down to River Road

424 River Road, Gatlinburg, TN 37738

865 436-7007 • gatlinburgsmysteriousmansion.com



Map Location 32

Ober Gatlinburg

AERIAL TRAMWAY

Enjoy spectacular views year round from aboard the 120 passenger Aerial Tramway. Departs regularly from downtown Gatlinburg to Ober Gatlinburg Ski Area and Amusement Park. Featuring a full restaurant, lounge and activities for the entire family to enjoy together.

1001 Parkway, Ste. 2
Gatlinburg, TN 37738

800-251-9202 • 865-436-5423 • obergatlinburg.com



Map Location 39

Ober Gatlinburg

SKI AREA & AMUSEMENT PARK

Ride the Aerial Tramway to Ober Gatlinburg. Summer Tubing, Coaster, Ice Bumper Cars, Alpine Slide, Scenic Chairlift, Ice Skating and Wildlife Encounter amounts to year-round fun for everyone! Winter Snow Skiing, Snowboarding, Snow Tubing, Shops, full-service restaurant & lounge and more!

1339 Ski Mountain Rd
Gatlinburg, TN 37738

800-251-9202 • 865-436-5423 • obergatlinburg.com



Map Location 11



Ripley's AQUARIUM OF THE SMOKIES

Best Aquarium by
USA Today 10Best.com

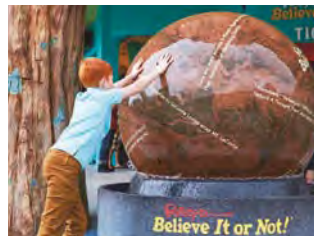
Marvel at 12-foot sharks, a giant sea turtle, thousands of exotic sea creatures and playful penguins as you enjoy the Most Spectacular, State-of-the-Art Underwater Tunnels! Touch Horseshoe Crabs, Jellyfish & Stingrays! Play in the 3-Story Discovery Treehouse & Play Center! Experience a ride over Shark Lagoon on the Glass Bottom Boat Adventure! Feed the Stingrays! See Mermaids swimming June & July! Experience Sleeping With the Sharks, Behind the Scenes Tour, Educational Programs, Splashing With the Stingrays, Penguin Encounter and Painting programs! Family Fun, Interactive, Hourly Dive/Feeding Shows and much more!

On the Parkway, Traffic Light #5
88 River Road, Gatlinburg, TN 37738

865-430-8808 • 888-240-1358 • ripleysaquariumofthesmokies.com



Map Location 62



Ripley's Believe It or Not!

Better (and Stranger)
than Ever!

A Must See for All! Ripley's Believe It or Not! is better (and stranger) than ever! See the weirdest and most remarkable items from around the world that will entertain and fascinate the entire family. Experience the adventurous spirit of Robert Ripley who traveled to over 200 countries to search for the odd and unusual. Various Interactives that will excite throughout including the Kaleidoscope Room, Optical Illusion Room, Rainbow Shadows, To the Moon and Back. Full of Unique Exhibits, Fun Interactives, Crazy Art, Incredible People, Animals and Creatures plus much more!

On the Parkway, Before Traffic Light #8,
800 Parkway,
Gatlinburg, TN 37738

865-436-5096 • 877-475-3974 • ripleysgatlinburg.com



Map Location 3

Ripley's DAVEY CROCKETT MINI-GOLF

Play Gatlinburg's Most
Entertaining Mini-Golf!

36 times the Fun for the Entire Family! Two Amazing 18-hole State-of-the-Art golf courses with interactive displays and animated animals. Enjoy Spinner Course Challenges that will bring more excitement, fun and challenges to your mini-golf game! Free parking or ride the Trolley.

On the Parkway, Traffic Light #1,
188 Parkway,
Gatlinburg, TN 37738

865-430-8851 • ripleysgatlinburg.com



Map Location 48

Ripley's HAUNTED ADVENTURE

You're Never Alone in the Dark!

Frights, Fun and Screams for Everyone! Enjoy this multi-million, state-of-the-art World-class Haunted Attraction & Gatlinburg's #1 Haunted House! New hauntings, special effects and live actors! Bring all your family and friends...there's safety in numbers!

On the Parkway, Traffic Light #8,
908 Parkway,
Gatlinburg, TN 37738

865-430-9991 • ripleysgatlinburg.com



Map Location 48

Ripley's MOVING THEATER 5D

Experience 5D Done Right!

The thrill movies you ride now powered by Real D 3D as used in *Mulan*, *Black Widow*, *WW84*, *Wonder Woman*, *Despicable Me*, and *Minions* movies plus many more! Cutting Edge, State-of-the-Art Motion Simulator! Feel every bump, dip, turn, rush of wind and full weather effects! Ride the Movie, Feel the Rush!

On the Parkway, Traffic Light #8,
904 Parkway,
Gatlinburg, TN 37738

865-436-9763 • ripleysgatlinburg.com



The Salt and Pepper Museum



Map Location 73

Ripley's SUPER FUN ZONE!

All New 80's Style Attraction!

Experience everything in 80's style for the next level of fun competition with family and friends! Outplay, out-manuever and outshoot in the Totally Spectacular Laser Tag. Play a round of Rad Indoor Mini-Golf or show off your sharpshooting skills to outscore in the Shooting Gallery complete with all your favorite 80s toys! Shop To The Max in our Excellent gift shop! Steller fun for all, For Sure

On the Parkway,
Between Traffic Light #3 & #5,
542 Parkway,
Gatlinburg, TN 37738

865-277-4700 • ripleysgatlinburg.com



Map Location 7



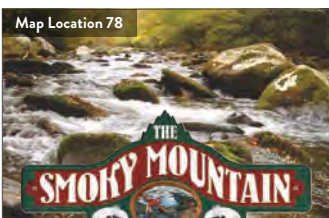
Voted Gatlinburg's #1 Rated Theme park and 5 Star rated by TripAdvisor. Home to Two Amazing Rides: The Worlds First Single Railed Mountain Glider and Gatlinburg's #1 Rated Alpine Coaster. One Hour Unlimited ALPINE Coaster Wristbands Available. Enjoy Both Adventures with a Purchase of a Combo Ticket. Open 365 Days a Year, with Day and Night Rides. Control Your Speed. Amazing Mountain Views. Each Coaster Cart Equipped with a Collision Avoidance Safety System. Large Groups Welcome. Free Parking

386 Parkway, Gatlinburg, TN 37738

865-409-5045 • RowdyBearMountain.com



Ripley's Super Fun Zone!



Full Line Fly Shop. Year-Round Professional Guide Service. TWRA License Agent. Rental Equipment. Serving Gatlinburg Since 1988. GSMNP Authorized Concessioner

469 Brookside Village Way, Winery
Square Gatlinburg, TN 37738

865-436-8746
smokymountainangler.com



Map Location 43

SUGARLANDS Riding Stables

Ride in the National Park. Guided Mountain Trail Rides. Just inside Park entrance. 11/2 miles past traffic light #10

Highway 441, Gatlinburg, TN 37738

865-436-3535
sugarlandsridingstables.com



Fannie Farkle's Amusement Center

Whitewater RAFTING



SMO Rafting

WHITewater RAFTING

NANTAHALA OUTDOOR CENTER

1138 Parkway
(865) 277-8209
noc.com

Named "#1 Vacation with a Splash" by Good Morning America, NOC offers two Pigeon River rafting adventures. Visit NOC Gatlinburg to book your trip and discover the latest adventure gear!

RAFTING IN THE SMOKIES

813 East Parkway
(865) 436-5008
raftinginthesmokies.com

No experience necessary! The highlight of your vacation! Great deals and packages on rafting, ziplining, ropes/challenge course, rock climbing wall and horseback riding for all ages. Come enjoy our 10 acre Family Adventure Island.

SMO RAFTING

103 Silverbell Lane
(865) 430-3838
smokymountainrafting.com

The most trusted outfitter on the Pigeon River! Fun for first timers. Offering the longest whitewater trip since 1993. Trip Advisor Travelers' Choice Award. Call or book online.



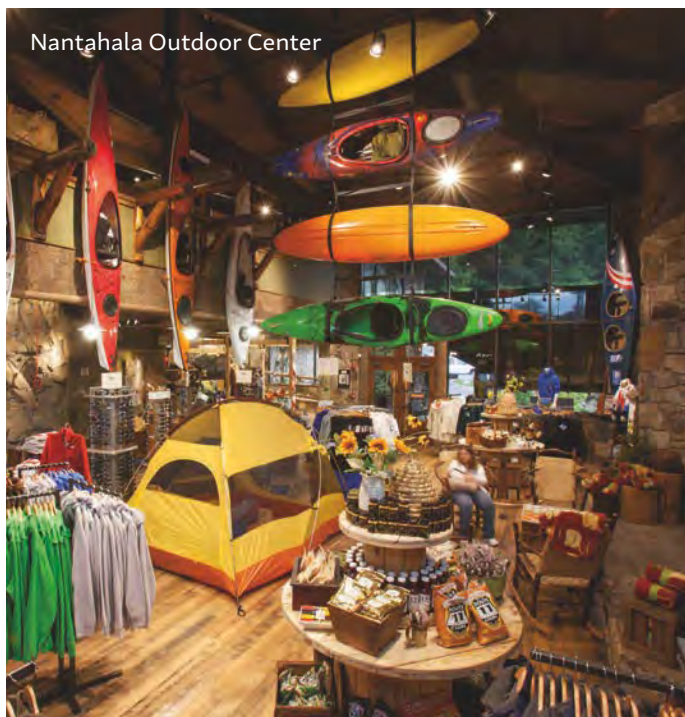
Map Location 92



No experience needed. Whitewater rafting and family float options. Professionally guided. Safe and affordable Zipline Course. Challenging Rope Course. Rock Climbing Wall. 10-acre Family Adventure Island. Short, scenic drive from the city. Raft, Zip, Rope and Rock all in one location.

813 E. Parkway
Gatlinburg, TN 37738

1-800-PRO-RAFT(776-7238) • raftinginthesmokies.com



Nantahala Outdoor Center

Rafting in the Smokies



Map Location 44



NANTAHALA OUTDOOR CENTER

Named "The #1 Vacation with a Splash!" by Good Morning America, Nantahala Outdoor Center brings over 40 years of experience to fully-guided raft trips on the Upper and Lower Pigeon River. Family-friendly float trips are available for kids as young as 3 years old! After your adventure grab a hot shower, souvenir, and have a picnic at NOC's Pigeon River Outpost. Stop by our retail location at Stoplight 10 in Gatlinburg to grab your tickets! For more information 24/7 visit noc.com.

1138 Parkway
Gatlinburg, TN 37738

865-210-8635 • nocgatlinburg.com



Map Location 79



Go With SMO! The most trusted outfitter on the Pigeon River.

You want real, off-the-beaten-path Smoky Mountain experiences. The rapids on the Pigeon River are thrilling and the views are spectacular. The Pigeon River is one of the most popular rafting rivers in the United States. You'll love rafting with SMO, the most trusted outfitter on the river.

Only 45 minutes from the Gatlinburg Parkway, the Pigeon River features exciting whitewater and scenic float rafting trips. At SMO Rafting, our award-winning raft guides take great care of you and your crew, navigating your raft through the beautiful river gorge. See the Smokies where only boats can go and walk away with great stories and photos to share with everyone back home.

Reservations Office: 103 Silverbell Lane
Gatlinburg, TN 37738

800-771-7238 • 865-430-3838 • smokymountainrafting.com