

Clear Creek Corridor – RULES & REGULATIONS

For Getting in the Creek:

- Water conditions vary. Wear lifejackets and water safety gear.
- If you plan to tube in the creek, watch the safety video at www.visitgolden.com/creek-info.
- Use designated creek access points.
- You MUST exit the water no later than the Vanover Park.

For Being in the Corridor:

- Keep dogs on a leash.
- Keep the air clean – no smoking or vaping.
- Keep the area safe and clean – no glass OR alcohol.
- Keep trash in a can, no single-use plastics in the creek and pick up your trash and recycle.
- Charcoal grill fires are prohibited. Use of a portable propane camp stove is permitted if the stove's propane tank has a capacity of two pounds or less.

For Using the Path:

- Pedestrians and tubers should use the trail on the NORTH side of Clear Creek.
- Faster traffic, particularly cyclists, should use the SOUTH side of the creek trail.
- Keep trail traffic moving. Travel single file and avoid stopping to congregate.
- Cyclists must go 8 mph or less on the NORTH side of the trail, give an audible signal and slow down to a walking pace when passing pedestrians.



Clear Creek Safety Status

Look for colored flags along Clear Creek that correspond to the safety levels on the Creek Warning Flags sign. The status is also updated online at visitgolden.com/creek-info. Always use caution!

- **Double-Red Flag = Closure**
– Clear Creek is closed to all uses.
- **Red Flag = High Flow**
– Clear Creek is closed for swimming and tubing.
- **Yellow Flag = Moderate to High Flow**
– Considered unsafe for children under 18.
– Clear Creek is open to all uses.
- **Green Flag = Moderate Flows**
– Clear Creek is open to all uses.



- For Creek concerns, call 303-384-8074.
- For Emergencies, dial 911.
- For Non-Emergencies, call Police/Fire/EMS at 303-980-7300.

For more information:
visitgolden.com/creek-info



Clear Creek Corridor Information



“Creek Responsibly”

New this year, creek users may be asked to put a sticker on their tube. Creek outfitters (Adventure West and Golden River Sports) already have their rental tubes affixed with stickers. These stickers activate sensors stationed at creek entry points and track how many people are tubing on the creek. The City is using this information to better understand visitation patterns as we look for ways to improve the experience of all creek corridor users including pedestrians, cyclists, tubers, and kayakers. Thank you for participating in making the creek experience better for everyone!

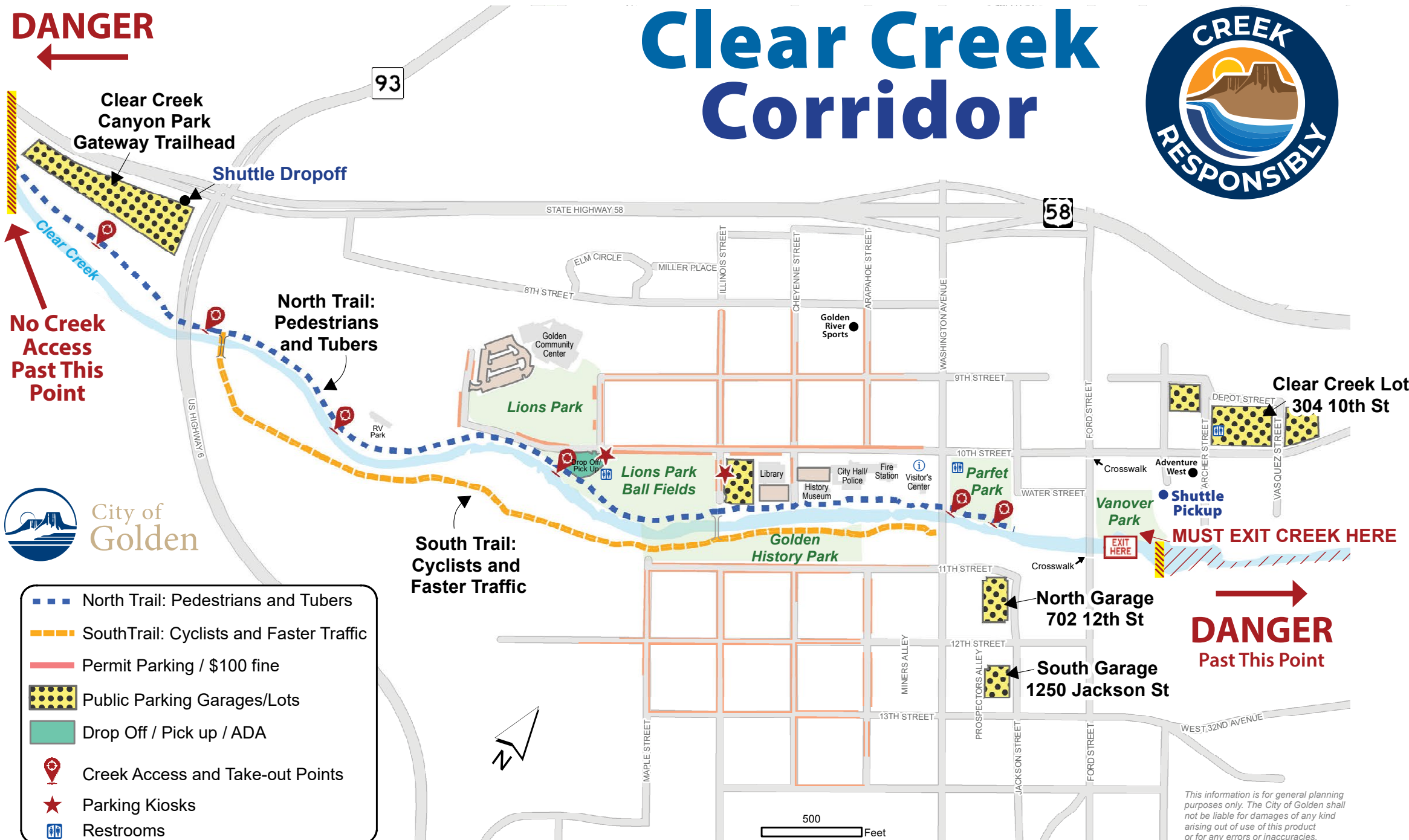


DANGER

Clear Creek Corridor



FREE
Public Parking
304 10th Street



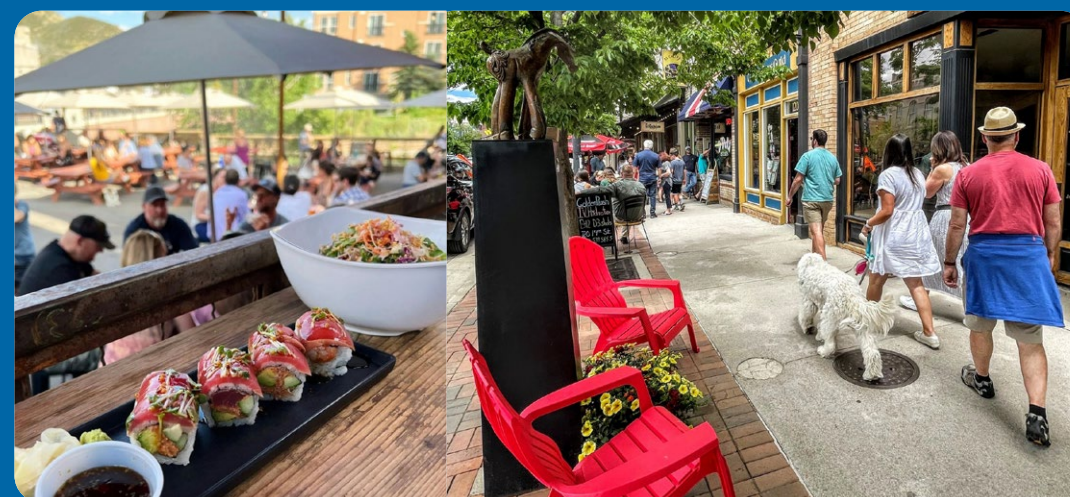
Where to Park:

- FREE parking is available in the Clear Creek Parking Lot at 304 10th St. The Clear Creek Parking Lot is very close to Vanover Park, where tubers and kayakers MUST exit the water. Other parking is available in downtown parking garages located on Jackson Street, between 11th and 13th Streets.
- Parking west of Washington Ave. along 10th St. and in the neighboring community requires a permit for residents or registration using the ParkMobile phone app. It costs \$8 to park for the day. Parking fines in this area are \$100, so ensure you are parked legally.
- The Golden Community Center Parking Lot is reserved only for Community Center visitors and will be enforced. The parking lot west of the Lions Park Ballfields on 10th St. is limited to ADA parking and as a drop-off and pick-up lane for creek and park users.

Resources for Your Visit:

CREEK AMBASSADORS

Clear Creek Ambassadors are City of Golden employees who are stationed along the creek each weekend to provide information and direction to creek users. Ambassadors can be found at the Clear Creek Parking Lot, by the beaches, and near the Billy Drew Bridge—just look for the flags and uniforms. The Clear Creek Ambassadors have information on how to access the creek, how to get to where you want to go in Golden, and how to make the most of your day in town!



Public Shuttles:

- A tubing shuttle, operated by Adventure West (one of the tubing outfitter companies), is available most weekends. Pick-up is located near the Clear Creek Parking Lot and drop-off is at the Gateway Trailhead. A ticket, valid for two trips on the shuttle, is available for purchase. For more information, visit www.adventurewestco.com.
- The "Ore Cart" is a FREE shuttle that runs downtown. While tubes are not allowed, the Gold Route of the "Ore Cart" shuttle service is a great option for shopping and dining in downtown Golden after a day of fun on Clear Creek. For more information, visit www.guidinggolden.com/transit.