

# GRAPEVINE

VINTAGE ★ TEXAS







## ABOUT GRAPEVINE

- Founded in 1844 as “Grape Vine Springs”
- Year round destination with 232 days of sunshine per year
- Hometown Historic Charm with Big-City Attractions
- Walkable & Accessible via Public Transportation
- Gateway to Texas and the South-Central USA



## HOST TO DALLAS FORT WORTH INTERNATIONAL AIRPORT

- 60+ International Destinations
- First carbon-neutral airport in North America
- 17.7-minute average for customs
- No more than 10 minutes from all Grapevine Hotels

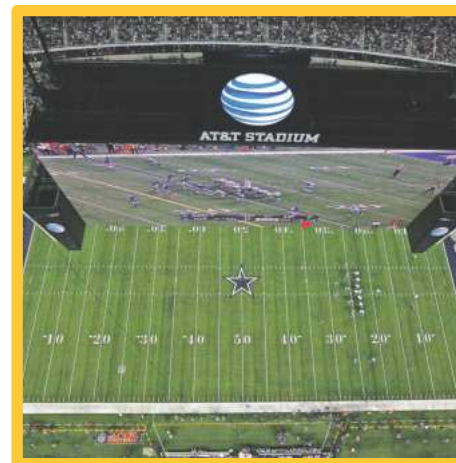
# NEARBY ATTRACTIONS

Grapevine's central location makes it the perfect hub to experience North Texas and beyond!

- Ft. Worth Stock Yards
- AT&T Stadium, Dallas

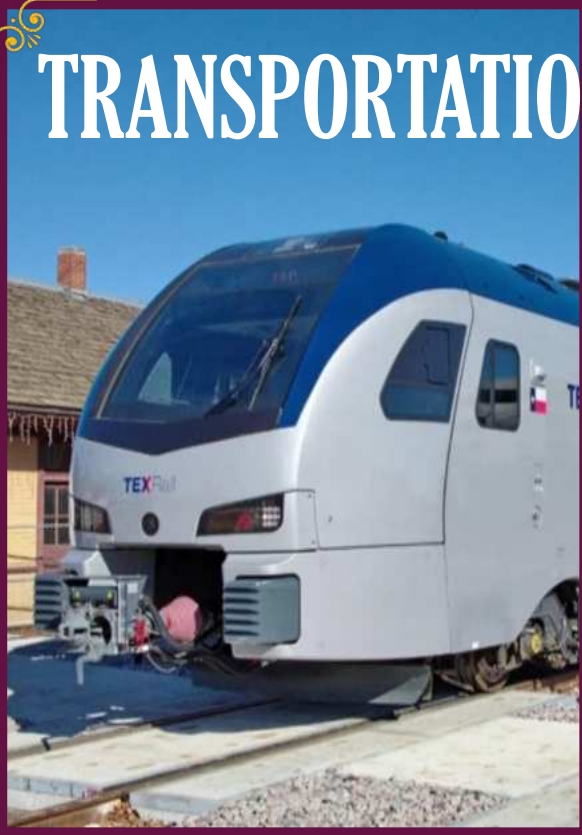
FIFA World Cup 2026  
in USA, Canada & Mexico

9 matches from the biggest-ever World Cup, including one semi-final at AT&T Stadium.





# TRANSPORTATION



Trinity Metro TEXRail  
commuter train



Grapevine  
Visitor Shuttle



Grapevine  
Vintage Railroad



# GRAPEVINE VINTAGE RAILROAD

**Fort Worth Stockyards:** Saturday and Sunday between Mid-February & Mid-November

**Victorian-Area Wagons:** from the 1920s (air-condition)

**Year-Round:** Train Themed Events like North Pole Express (Christmas), Jazz Trains, Wine Trains







## GRAPEVINE'S HISTORIC MAIN STREET DISTRICT

features more than 80 local boutiques, bistros, cafés, winery tasting rooms, art studios, galleries and attractions along a safe and walkable stretch that's dripping with historic, small-town charm.



# GRAPEVINE'S URBAN WINE TRAIL

**Grapevine's walkable wine trail features multiple winery tasting rooms along Historic Main Street**

**Several Wine Tasting Rooms**

**Beginner to Connoisseur Wines**

**Year Round Wine Events & Festivals**







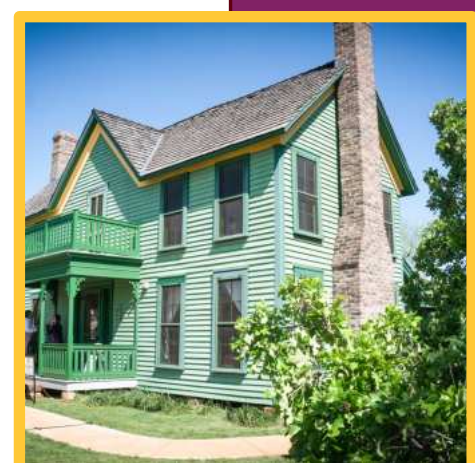
# LIVE MUSIC

Seven nights a week!

Event Calendar:  
[GrapevineTexasUSA.com](http://GrapevineTexasUSA.com)

# HISTORIC NASH FARM

- Walkable distance to Historic Main Street District
- Historic Farmhouse from 1869, Stables & other Buildings
- Sheep, Turkey, Chicken & Heirloom-Vegetables
- Tours & Events Year Round
- Free of charge!

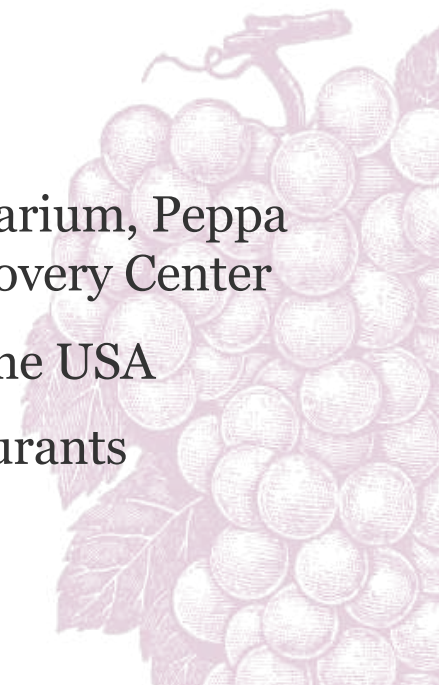






# GRAPEVINE MILLS ENTERTAINMENT & TAX-FREE SHOPPING

- **Biggest Outlet Mall** of North Texas  
(Simon Shopping Destination)
- **Merlin Attractions:** SEA LIFE Aquarium, Peppa Pig World of Play & LEGOLAND Discovery Center
- Second Biggest **Bass Pro Shops** in the USA
- Escape Rooms, Arcade-Games, Restaurants
- **Meow Wolf** – The Real Unreal



A photograph of a brick house entrance at night. The entrance features a dark door flanked by white columns with decorative scrollwork. A small potted plant with white flowers sits on the steps. A purple rectangular box is overlaid in the center of the image, containing white text. The background shows a brick wall and a window with curtains.

Please click  
[here](#)  
to watch the video



# UNIQUE TEXAS FOOD AND BEVERAGE

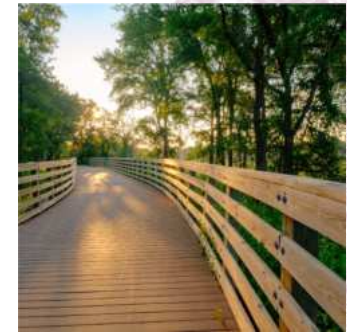
- Barbeque
- Tex-Mex
- Perfectly cooked steaks
- *Authentic* Texas chili
- Texas wine, beer and margaritas





## OUTDOOR FUN

- Beautiful Lake Grapevine
- Three world-class golf courses
- 40 km/25 miles of hiking and (e-)biking trails
- Average of 232 days per year with sun





# CHICKEN N PICKLE

INDOOR & OUTDOOR FUN!

Try one of the fastest growing sport in the USA: Pickle Ball ...and lots of other fun games!







## AWARD-WINNING FESTIVALS & EVENTS



*Grapevine is  
the official  
Christmas  
Capital of  
Texas!*

- New Vintage Wine & Gallery Trail (April)
- Main Street Fest – Craft Brew Festival (May)
- GrapeFest® – A Texas Wine Experience (September)
- Themed Wine and Craft Brew Trains throughout the year



# ITINERARY OPTIONS

**Texas Triangle:** Grapevine, Ft. Worth, Dallas, Austin, San Antonio, Houston

**Texas Wine Trail:** Grapevine, Lubbock, Fredericksburg

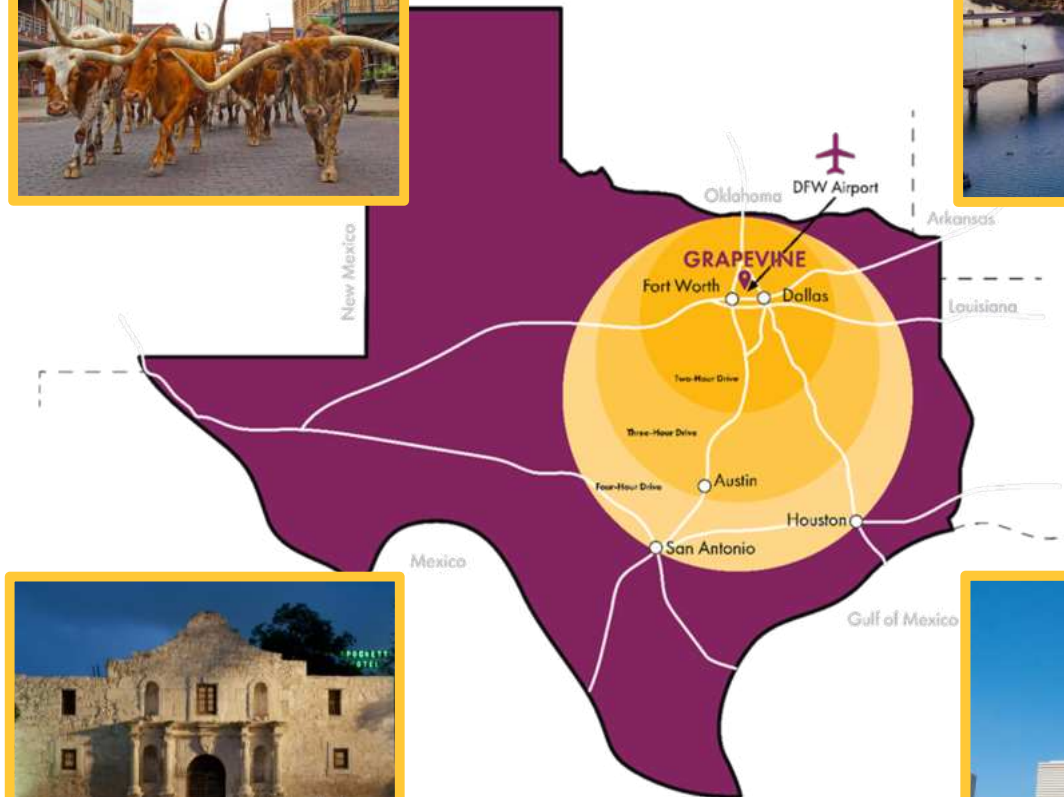
**Texas & New Mexico:** Grapevine, Ft. Worth, Wildcatter Ranch, Lubbock, Carlsbad, Albuquerque, Santa Fe

## ATI Itineraries:

- ▶ **Music & Outlaws:**  
Grapevine to Nashville, 24 days
- ▶ **Cowboys, Indians & all that Jazz:**  
Grapevine, Oklahoma City, New Orleans, 23 days
- ▶ **Route 66 East / West**

## Further inspiration:

[GrapevineTexasUSA.com](http://GrapevineTexasUSA.com) → Itineraries





## LOCAL TOURS

- Grapevine Food Tour
- Grapevine Wine Tour
- Night Watchman Ghost Tour
- Planes & Trains Tour
- Walking Art & History Tours





## GRAPEVINE HOTELS

- ▶ Hotel Vin
- ▶ Gaylord Texan Resort
- ▶ Great Wolf Lodge



- ▶ Spark by Hilton
- ▶ Comfort Suites
- ▶ Hampton Inn & Suites
- ▶ Hilton Garden Inn
- ▶ Holiday Inn Express Hotel & Suites
- ▶ Homewood Suites by Hilton
- ▶ Hyatt Place
- ▶ Springhill Suites by Marriott
- ▶ Super 8 by Wyndham Grapevine
- ▶ Courtyard/Townplace Suites by Marriott
- ▶ Hilton Garden Inn at Silverlake Crossing
- ▶ Grand Hyatt
- ▶ Hyatt Regency DFW
- ▶ Hilton DFW Lakes
- ▶ Embassy Suites by Hilton DFW Airport North



Please click  
[here](#)  
to watch the video





GRAPEVINE CONVENTION  
& VISITORS BUREAU

636 S. Main Street  
Grapevine, TX 76051  
+1.800.457.6338

## HEATHER EGAN

*Director of Leisure & International*

817.410.3561

[Hegan@GrapevineTexasUSA.com](mailto:Hegan@GrapevineTexasUSA.com)



## RESOURCES:

**Website:** [www.GrapevineTexasUSA.com](http://www.GrapevineTexasUSA.com)

**Newsletter:** [Sign Up](#)

**Visitor Guide:** Order [here](#)

