

GRAPEVINE

VINTAGE ★ TEXAS





ABOUT GRAPEVINE

- Founded in 1844 as “Grape Vine Springs”
- Year round destination with 232 days of sunshine per year
- Hometown Historic Charm with Big-City Attractions
- Walkable & Accessible via Public Transportation
- Gateway to Texas and the South-Central USA



HOST TO DALLAS FORT WORTH INTERNATIONAL AIRPORT

- 60+ International Destinations
- First carbon-neutral airport in North America
- 17.7-minute average for customs
- No more than 10 minutes from all Grapevine Hotels

NEARBY ATTRACTIONS

Grapevine's central location makes it the perfect hub to experience North Texas and beyond!

- Ft. Worth Stock Yards
- AT&T Stadium, Dallas

FIFA World Cup 2026
in USA, Canada & Mexico

9 matches from the biggest-ever World Cup, including one semi-final at AT&T Stadium.



TRANSPORTATION



Trinity Metro TEXRail
commuter train



Grapevine
Visitor Shuttle



Grapevine
Vintage Railroad



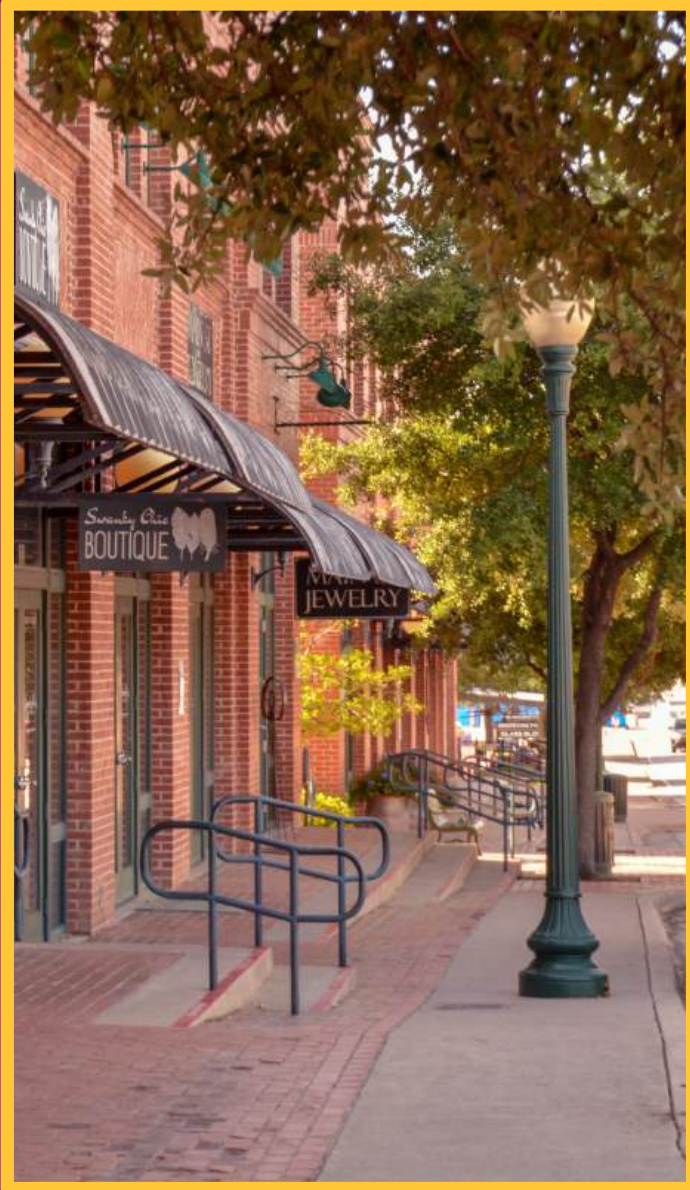
GRAPEVINE VINTAGE RAILROAD

Fort Worth Stockyards: Saturday and Sunday between Mid-February & Mid-November

Victorian-Area Wagons: from the 1920s (air-condition)

Year-Round: Train Themed Events like North Pole Express (Christmas), Jazz Trains, Wine Trains





GRAPEVINE'S HISTORIC MAIN STREET DISTRICT

features more than 80 local boutiques, bistros, cafés, winery tasting rooms, art studios, galleries and attractions along a safe and walkable stretch that's dripping with historic, small-town charm.



GRAPEVINE'S URBAN WINE TRAIL

**Grapevine's walkable
wine trail features
multiple winery tasting
rooms along Historic
Main Street**

9 Wine Tasting Rooms

**Beginner to Connoisseur
Wines**

**Year Round Wine Events
& Festivals**





LIVE MUSIC

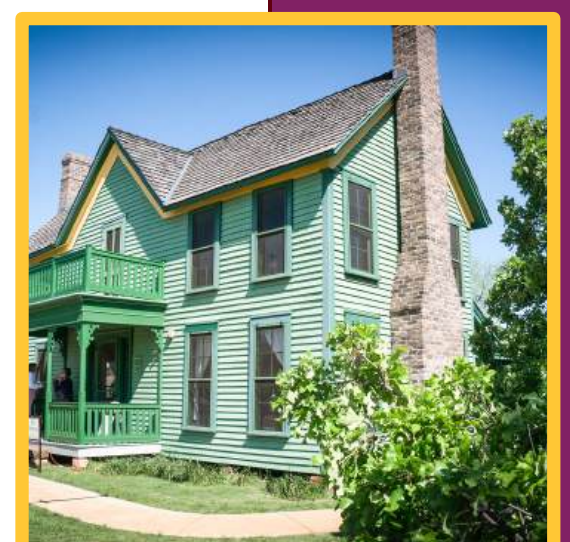
Seven nights a week!

Event Calendar:

GrapevineTexasUSA.com

HISTORIC NASH FARM

- Walkable distance to Historic Main Street District
- Historic Farmhouse from 1869, Stables & other Buildings
- Sheep, Turkey, Chicken & Heirloom-Vegetables
- Tours & Events Year Round
- Free of charge!





GRAPEVINE MILLS ENTERTAINMENT & TAX-FREE SHOPPING

- **Biggest Outlet Mall** of North Texas (Simon Shopping Destination)
- **Merlin Attractions:** SEA LIFE Aquarium, Peppa Pig World of Play & LEGOLAND Discovery Center
- Second Biggest **Bass Pro Shops** in the USA
- Escape Rooms, Arcade-Games, Restaurants
- **Meow Wolf** – The Real Unreal



A photograph of a brick building entrance. The entrance is framed by two decorative white columns with intricate scrollwork. The walls are made of dark red bricks. In the center, there is a doorway leading to a set of stairs. To the right of the doorway, there is a window with light-colored curtains. A potted plant with white flowers sits on the ground near the doorway. A purple rectangular box is overlaid on the center of the image, containing white text.

Please click
[here](#)
to watch the video

UNIQUE TEXAS FOOD AND BEVERAGE

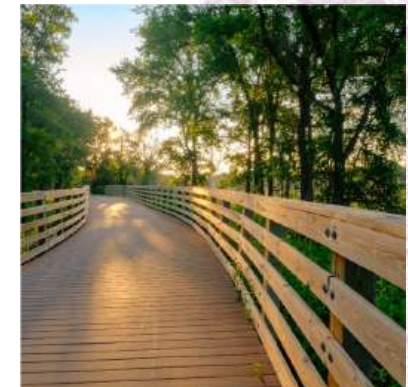
- Barbeque
- Tex-Mex
- Perfectly cooked steaks
- *Authentic* Texas chili
- Texas wine, beer and margaritas





OUTDOOR FUN

- Beautiful Lake Grapevine
- Three world-class golf courses
- 40 km/25 miles of hiking and (e-)biking trails
- Average of 232 days per year with sun



CHICKEN N PICKLE

INDOOR & OUTDOOR FUN!

Try one of the fastest growing sport in the USA: Pickle Ball ...and lots of other fun games!





AWARD-WINNING FESTIVALS & EVENTS



*Grapevine is
the official
Christmas
Capital of
Texas!*

- New Vintage Wine & Gallery Trail (April)
- Main Street Fest – Craft Brew Festival (May)
- GrapeFest® – A Texas Wine Experience (September)
- Themed Wine and Craft Brew Trains throughout the year

ITINERARY OPTIONS

Texas Triangle: Grapevine, Ft. Worth, Dallas, Austin, San Antonio, Houston

Texas Wine Trail: Grapevine, Lubbock, Fredericksburg

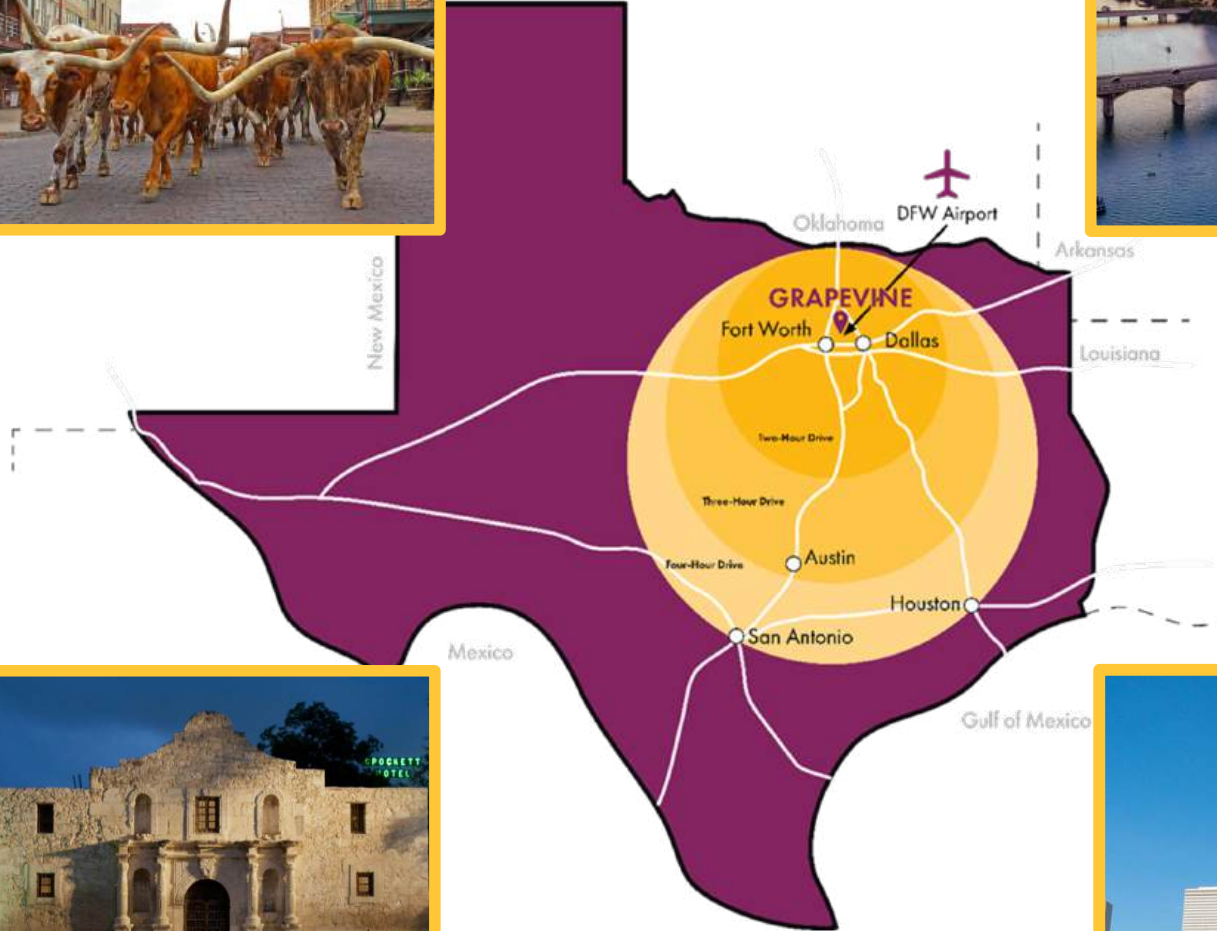
Texas & New Mexico: Grapevine, Ft. Worth, Wildcatter Ranch, Lubbock, Carlsbad, Albuquerque, Santa Fe

ATI Itineraries:

- ▶ **Music & Outlaws:**
Grapevine to Nashville, 24 days
- ▶ **Cowboys, Indians & all that Jazz:**
Grapevine, Oklahoma City, New Orleans, 23 days
- ▶ **Route 66 East / West**

Further inspiration:

GrapevineTexasUSA.com → Itineraries





LOCAL TOURS

- Grapevine Food Tour
- Grapevine Wine Tour
- Night Watchman Ghost Tour
- Planes & Trains Tour
- Walking Art & History Tours



GRAPEVINE HOTELS

- ▶ Hotel Vin
- ▶ Gaylord Texan Resort
- ▶ Great Wolf Lodge

- ▶ Spark by Hilton
- ▶ Comfort Suites
- ▶ Hampton Inn & Suites
- ▶ Hilton Garden Inn
- ▶ Holiday Inn Express Hotel & Suites
- ▶ Homewood Suites by Hilton
- ▶ Hyatt Place
- ▶ Springhill Suites by Marriott
- ▶ Super 8 by Wyndham Grapevine
- ▶ Courtyard/Townplace Suites by Marriott
- ▶ Hilton Garden Inn at Silverlake Crossing
- ▶ Grand Hyatt
- ▶ Hyatt Regency DFW
- ▶ Hilton DFW Lakes
- ▶ Embassy Suites by Hilton DFW Airport North



Please click
[here](#)
to watch the video

MUSEUM
VISITORS
PARKING
ONLY



GRAPEVINE CONVENTION
& VISITORS BUREAU

636 S. Main Street
Grapevine, TX 76051
+1.800.457.6338

HEATHER EGAN

Director of Leisure & International

817.410.3561

Hegan@GrapevineTexasUSA.com



RESOURCES:

Website: www.GrapevineTexasUSA.com

Newsletter: [Sign Up](#)

Visitor Guide: Order [here](#)

