

GRAPEVINE EXPRESS

Grapevine, Texas

VISITOR NEWSLETTER

April 2023

GRAPEVINE VINTAGE RAILROAD

Step back in time, to the golden age of the railroad, on a family-friendly excursion on the rails! The Grapevine Vintage Railroad—located in the heart of the Historic Main Street District—offers a unique experience on accurately restored 1920s coaches.



Featured Upcoming Events:

Easter Bunny Express—April 9, 1 & 3 p.m.

Jazz Wine Trains—April 14, 21 & 28, 7:25 p.m., ages 21+

Tickets and information available at GVRR.com

GRAPEVINE MAIN STATION & TOWER TOURS

Grapevine's newest landmark, reminiscent of grand rail stations of the early 19th century, provides a hub for people to come together to enjoy live entertainment and globally inspired dining. Tours of the station are available daily and include a visit to the Grapevine Observation Tower. Tickets are \$3 per person.



*Purchase tickets at the Visitor Information Center or online at GrapevineTexasUSA.com
Private Group Tours may be arranged with seven-day advanced notice.*

LIVE MUSIC

Local country music entertainer, Justin Mason will be opening for BlackHawk—dynamic country music band who has sold over 7 million albums—at the Glass Cactus Night Club at the Gaylord Texan. Doors open at 7 p.m. and tickets can be purchased online at the Glass Cactus website. Don't miss this incredible night of drinks, dancing and true country music entertainment!
Thursday, April 6

UPCOMING EVENTS



The 31st Annual New Vintage Wine + Gallery Trail & Art Show, presented by Park Place Lexus, Jaguar, and Land Rover Grapevine, is one of Grapevine's most popular annual events.

The day begins at 10:30 a.m. at Peace Plaza with the Blessing of the Vines. This centuries-old European tradition features a blessing performed by a priest to ensure a bountiful harvest, this event, which features a fine arts show, is free and open to the public. Then, from 11 a.m.–6 p.m., passport holders will walk along Historic Main Street, sampling wines and small bites from wine tasting rooms, and they'll visit art galleries and working studios to find colorful and collectible works of art. Tickets for the New Vintage Wine + Gallery Trail & Art Show are \$55 per person. *Saturday, April 15*

Grapevine's Inaugural ART PATRON PARTY

Be among the first to attend the all-new Art Patron Party at Peace Plaza on Friday, April 14. From 6:30 p.m.–9:30 p.m. this interactive event features stunning paintings and sculptures by internationally-recognized artists from across the North Texas Region. Patrons will have the opportunity to talk with the artists and purchase their favorite works during a beautiful spring night in Historic Downtown Grapevine. Patrons will enjoy wine, craft brews, floating appetizers, live jazz music, and more. Patron tickets are \$75 per person. *Friday, April 14*

For more information or to purchase tickets for The New Vintage Wine + Gallery Trail & Art Show and the Art Patron Party visit GrapevineTexasUSA.com.

Runway Theater presents "DISASTER"

It's 1979 and the town's hottest A-listers are on-board to celebrate the opening of a floating casino slash discotheque. Boogie fever rapidly sinks as the ship succumbs to multiple disasters (just the usual: earthquakes, tidal waves and infernos). This hilariously campy homage to the era of the hustle features larger-than-life characters, snappy dialogue, and unforgettable songs of the '70s like "Knock on Wood," "Hooked on a Feeling," "Sky High," and "I Am Woman." Don those bell bottoms for a parody party!

Mar 24–Apr 9 | 215 N. Dooley St. | RunwayTheatre.com/38thSeason

THE PALACE ARTS CENTER



The Historic Palace Theatre, a restored 1940s art deco-style theater, makes going to the movies a special occasion. Enjoy classic movies and live entertainment throughout the year.



Scan for schedule and tickets.

Tickets are \$6 | 300 S. Main Street. | Palace-Theatre.com

HERITAGE TRAIL

Take a walk through the past from The Cotton Belt Depot to Settlement to City Museums! See how the original settlers on the Grape Vine Prairie lived and worked. This collection of historic sites and museums highlights the cultural and family life of early Grapevine residents and explores how technology helped transform the prairie into the city we now enjoy.

C. MILLICAN BLACKSMITH SHOP

Watch a working blacksmith weld metal. Located in the far east end of the Cotton Belt Railroad District parking lot. In 1909 Charles “Mr. Charlie” Millican, opened his smithy on the north side of present-day Texas St. in Grapevine. Mr. Millican remained in business until 1959, when he, and his son Bill, sold the property, and the building was torn down. The blacksmith shop served as a gathering place for men in the community to spin yarns and whittle pieces of wood while they waited for repairs on their metals. When cars became a part of life in Grapevine, Mr. Charlie and his partner Mr. Shaw dug a pit in the floor in order to get under cars to make necessary repairs. Even later, the blacksmith shop became a place where airplane pilots gathered while Mr. Charlie made repairs to airplane parts. Over the years, Millican’s Blacksmith Shop was a source of countless hand-crafted basketball hoops and croquet mallets. Up to the time that the shop was closed, people brought their lawnmowers, garden equipment, and saw blades to be repaired and sharpened by Mr. Charlie.



Really love history? Contact the Visitor Information Center at 817.410.3189 to schedule your guided Grapevine Historic Walking Tour. 90 minutes. \$5 per person.

HISTORIC NASH FARM

Experience late 19th century farm life at historic Nash Farm in Grapevine, Texas! The farm grounds are open for self-guided tours daily during regular business hours. Scheduled events and activities throughout the year give additional hands-on opportunities to experience farm life.



Upcoming Events: **First Fridays on the Farm**—Spring on the Farm—March 3, 10 a.m.–Noon, \$5

Spring Into Nash—Experience 19th century skills and trade at Nash Farm’s Spring Agricultural Festival. April 22, 10 a.m.–2 p.m.

Open 9 a.m.–5 p.m. | 626 Ball Street | NashFarm.org

GRAPEVINE VISITOR SHUTTLE



Ride the Grapevine Visitor Shuttle for Free!

The Grapevine Visitor Shuttle is an excellent way to see Grapevine! Fully air conditioned, it stops outside Grapevine Main Station and at a variety of attractions around town. For a visitor shuttle map, including pick up times, please visit the Visitor Information Center or scan the QR code.



SCAN FOR DETAILS

Route Hours

Wednesday–Saturday

11 a.m.–9 p.m.

(final run begins at 8 p.m.)

Sunday

11 a.m.–7 p.m.

(final run begins at 6 p.m.)

NIGHT WATCHMAN GHOST TOURS

Presented by Grape Vine Springs Winery, this walking Ghost Tour happens each Friday and Saturday.* Grapevine has a history of the paranormal and what better way to hear the stories and see the historic locations? The tour begins and ends at Grape Vine Springs Winery with a complimentary glass of wine for each guest on the tour. GrapevineSpringsWinery.com

ART AND CULTURE

GRAPEVINE PUBLIC ART TRAIL

Long before the Republic of Texas settled in what is now Grapevine, various Native American tribes lived on the land for many years. When Texas became a Republic in 1836, the Texans and Native Americans had conflicts over land rights. In 1843, the President of Texas, Sam Houston, met with the leaders of 10 Native American tribes in what was then known as the Grape Vine Prairie to promote the spirit of peace, friendship, hope, and trust. This meeting led to the signing of the Treaty of Bird's Fort.



On Sept. 18, 2021, to commemorate this historical event, the City of Grapevine unveiled the Peace Circle in front of Grapevine Main Station. The art installation features 11 bronze statues of Sam Houston and the Native American chiefs from the Delaware, Chickasaw, Waco, Tawakoni, Keechi, Caddo, Anadarko, Ioni, Biloxi, and Cherokee nations. These sculptures were brought to life by Linda Lewis, a native of Texas that had been sculpting for 23 years. She said this was her “Super Bowl moment.”

When the Peace Circle was dedicated, representatives of each of the 10 tribes (their Chiefs and descendants) attended and performed blessings and rituals to honor this historic peace. *Grapevine Main Station, 815 S. Main St.*

Contact the Visitor Information Center to schedule your guided Grapevine Public Art Trail Tour. 60 minutes. \$5 per person and loads of fun.

ART GALLERIES

Discover art in the heart of Grapevine's Historic Main Street District. Walk the public art trail and experience Grapevine's bronze sculptures, art galleries, working fine arts studios and creative crafting stores. Hours vary by gallery:

- Giddens Gallery of Fine Art
- RTown Art Studio & Gallery
- Holder Dane Art Gallery & Studio
- Vetro Glass Blowing Studio
- International Porcelain Artists Museum & Gallery
- Palace Arts Center
- Tower & Grand Galleries
- Touch of Paris Art Gallery

GRAPEVINE URBAN WINE TRAIL

FEATURED WINERY



Bingham Family Vineyards' tasting room is located next to the Grapevine Visitor's Information Center. Enjoy a wine tasting of five Bingham Family Vineyards Estate wines for \$15, or \$20 for an all-red wine tasting. Reservations are required for groups of 4 or more. *620 S. Main St.*

FEATURED EATERY



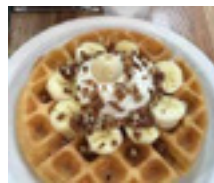
AJ's On Main—Pulled pork headlines the Texas-style BBQ menu at this casual joint with Lone Star decor & a bar. Look for bricks from the original Wallis Hotel embedded into the steps leading up to AJ's patio. *651 S. Main St.*

SOUTH OF MAIN STREET



Velvet Taco is a funky taco spot creating international flavors! They are a one-of-a-kind concept serving premium gourmet tacos and foods in a unique & funky fast-casual setting. Their tacos may not change the entire world, but Velvet Taco thinks they are pretty freakin' awesome. *440 State Hwy 114*

NORTH OF MAIN STREET



Waffle Way—Cooking up your New Cravings! Waffle Way is a Daytime coffee shop serves omelets, salads & sandwiches, along with sweet & savory waffles. A long-standing local favorite. *1206 W. Northwest Highway*

OFF MAIN STREET



Grimaldi's Pizzeria serves traditional coal-fired brick oven pizza using pizza-making traditions originating in Brooklyn over 100 years ago. They are a family-friendly, casual yet upscale, New York-themed restaurant. It is their passion for pizza that has made them a “must-eat” for pizza lovers everywhere! *1401 William D Tate Ave, Ste 100*

COFFEE, TREATS, AND DESSERTS

Chocolate Hangover, Bootleggers of Chocolate Moonshine, is your one-stop source for world-class, one-of-a-kind chocolates, fudge and distinctive gifts. Chocolate Hangover, Chocolate Moonshine and Quintessential products are some of the finest chocolates in the world! Their products are made with natural ingredients, and most are gluten-free! Their fudge is made with 30% less sugar than most fudge and is smooth as butter! And you must try their boozy popsicles! *520 S. Main #207*

LOCAL ENTERTAINMENT

Venue	Mon.	Tues.	Wed.	Thurs.	Fri.	Sat.	Sun.
Big Daddy's Ship Store					Live Music		
Big Fish Seafood Grill & Bar			Live Music			Live Music	
BoomerJack's Grill & Bar			Live Music				
Brew and Batter						Live Music	
Bull Lion Winery					Live Music		
Chez Fabien					Live Music		
Chill Bar & Grill	Trivia	Bingo & Karaoke	Live Music		DJ starting at 10 p.m.		
Corky's Gaming Bistro			Ladies' Night				
Dino's Steak and Claw House			Piano Music				
Farina's Winery & Café					Live Music		
Glass Cactus at Gaylord Texan					Live Music		
Grapevine Springs Winery					Ghost Tour		
Hop & Sting Brewing Co.	Monarch Monday	Hop & Sprint	Bikes & Brews	Live Music	Bend & Brew	Live Music	Trivia
Hotel Vin: The WineYard					Live Music through November 18		
JudyPie		Bingo					
Mason and Dixie						Live Music	
Napoli's Italian Kitchen					Live Music		
Palace Theatre						Live Music	
Piaf Kitchen+Wine+Bar				DJ or Live Music			
Rioja Rooftop Terrace						Live Music	
Sloan & Williams Winery					Live Music		
Tap In Grill and Pub	Live Music		Karaoke & Trivia	Live Music			
Texas Star Dinner Theater					Murder Mystery		
Third Rail at Harvest Hall		Themed Trivia Night	Music Bingo	Live Band/ Karaoke	Live Music		Live Comedy
Tolbert's Restaurant		Live Music					
Town Square Gazebo						Live Music	
Willhoite's Restaurant		All Day Karaoke	Live Music				

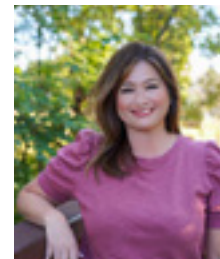
VISITOR INFORMATION CENTER

Inside Grapevine Main Station, 815 S. Main St.
Monday-Thursday, 11 a.m.-5 p.m.,
Friday-Saturday, 10 a.m.-6 p.m.; Sunday, Noon-5 p.m.

- Complimentary Visitor Planning Services
- Board Games & Card Games
- "Welcome to Grapevine" Information Packet
- Event & Attraction Tickets
- Luggage/Coat Check Service \$2 per day, per bag
- Observation Tower Guided Tours \$3
- Souvenir and Sundry Shop
- Public Art Tours \$5
- Historic Grapevine Walking Tour \$5

817.410.3189 | GVMVC@GrapevineTexasUSA.com

VISITOR CONCIERGE OF THE MONTH



Michelle has been a Visitor Concierge for the City of Grapevine for about four months. She and her husband John, whom she met while studying at UCLA, moved to Flower Mound twelve years ago. She's kept very busy as a stay-at-home mom with four daughters and three cats, but she recently got her real estate license on top of that. Michelle loves being a Visitor Concierge because she enjoys meeting and talking with new people. When she has a chance to unwind, she and her husband enjoy traveling, taking long walks, trying out new restaurants and binge-watching shows on Netflix.



Grapevine Calendar of Events

View the full calendar of events taking place throughout the city.

Events and schedule subject to change without notice



TRINITY METRO
TEXRail

Grapevine is the perfect place to stay for a getaway. With more than 20 accommodations to choose from, there is something for any budget. Scan here to get started.

Visit Grapevine via Trinity Metro TEXRail, which stops right in the heart of Grapevine's Historic Main Street District.


GRAPEVINE MILLS
A SIMON CENTER

Enjoy 1.8 million square feet of shopping under one roof plus LEGOLAND® Discovery Center, SEA LIFE Grapevine Aquarium and Peppa Pig World of Play!

