

# GRAPEVINE EXPRESS

Grapevine, Texas

## VISITOR NEWSLETTER

March 2024

*Produced by the Grapevine Visitor Information Center*

### GRAPEVINE VINTAGE RAILROAD

Step aboard the golden age of the railroad and get ready for a family-friendly excursion on the rails! The Grapevine Vintage Railroad (GVRP)—located in the heart of Historic Downtown Grapevine—offers a unique experience on authentic 1920s coaches.



**Grapevine Bear Creek Short Line:** \$10-12, **Cotton Belt Route:** \$18-26, \$72, **Trinity River Train Excursion:** \$10-12

### SPRING BREAK COTTON BELT RAILROAD ADVENTURE

Roll into the world of railroading while learning about railroad-related occupations. Ticket prices include a trip on Grapevine Vintage Railroad and access to the rail adventure activities. March 12, 13, 14, 11:50 a.m. and 1:50 p.m., \$20 - \$22, tickets at GVRP.com.

### KISS ME I'M IRISH TRAIN

Celebrate the luck of the Irish on board the Kiss Me I'm Irish Express, presented by TEXRail. Your purchase includes individually portioned Irish-style food items, two complimentary glasses of Texas craft brew served in a souvenir mug and Irish music during the two-hour experience. Additional brew will be available for purchase. Ages 21+ only. March 15, 7 p.m., \$42, tickets at GVRP.com.

### EASTER BUNNY EXPRESS

Hop on board the Easter Bunny Train! Meet the Easter Bunny and receive a delicious Easter treat on this exciting family-friendly excursion! March 31, \$20, tickets at GVRP.com

### GRAPEVINE OBSERVATION TOWER



See all the points of interest in Grapevine and the Dallas-Fort Worth Metroplex from 150 feet in the air. Informational panels provide visitors with an overview of Grapevine history and attractions. Purchase walk up tickets at the Visitor Information Center or online at GrapevineTexasUSA.com. *Private Group Tours may be arranged with seven-day advanced notice.*

### UPCOMING EVENTS

#### ST. PATRICK'S DAY- AND EASTER-THEMED CHARCUTERIE WORKSHOPS

Learn the tips and tricks of making your own charcuterie board. Your workshop includes a drink ticket and all supplies to create your board. YaYaYum Boards, 112 E. Texas Street, St. Patrick's Day Workshop - March 7, Easter Themed Workshops - March 28 & 30, 6:30 p.m. - 8:30 p.m., \$80 per person per workshop.

#### SEIZE THE CLAY WORKSHOP

House of Shine's enthusiastic instructors will guide you in creating your own pottery pinch pots. Your creatively-designed pinch pots will become the vessel that collects change that you ultimately donate to a student "change-maker" who has an idea to improve our community. Ideas will be shared at the Change Bowl community event on April 6. House of Shine, 334 S. Barton Street, March 9, 1 p.m. - 2 p.m., \$10.

#### MURDER ME I'M IRISH MURDER MYSTERY DINNER

Get ready to shamrock and roll at this St. Patrick's Day Murder Mystery Dinner! Get yer Irish jig on this St. Patty's Day for a night of mystery and mayhem. May the luck of the Irish be with ya! Messina Hof Winery 201 S. Main Street, March 16, 6:30 p.m. - 9:30 p.m., \$69.95 per person.

#### ST. PATTY'S DAY CELEBRATION AND LUNCH + LAMBOS

Come join Grapevine's St. Patrick's Day Celebration and rev up your lunch with Lunch + Lambos, the ultimate car show on Peace Plaza! Other St. Patrick's Day activities include a day of green beer and \$10 specialty cocktails all day long from their one-day only Jameson pop-up bar. The celebration continues with a DJ spinning music from 6 - 9 p.m. Peace Plaza, 815 S. Main Street, March 17, 11 a.m. - 11 p.m., Lunch + Lambos, 11 a.m. - 2 p.m.

#### EGG-TRAVAGANZA HELP CREATE

Inspire this year's Easter egg hunt with fun and festive glass eggs that you help create with talented Vetro glassblowers. Make it a family event as kids ages 12+ are welcome. Vetro Glassblowing Studio & Gallery, 701 S. Main Street. #103, March 30, \$55, VetroArtGlass.com

## THE PALACE ARTS CENTER



The Historic Palace Theatre, a restored 1940s art deco-style theater, makes going to the movies a special occasion. Enjoy classic movies and live entertainment throughout the year.



Scan for schedule and tickets.

**It's Spring Break at the Palace!** Bring the kids and enjoy special movies and Cartoons and Crafts. *March 11–15*

300 S. Main Street. | [Palace-Theatre.com](http://Palace-Theatre.com)



## GRAPEVINE VISITORS SHUTTLE

### Ride the Grapevine Visitor Shuttle for Free!

The Grapevine Visitors Shuttle is an excellent way to see Grapevine! Fully air conditioned, it stops outside Grapevine Main Station and at a variety of attractions around town. For a visitor shuttle map, including pick up times, please visit the Visitor Information Center or scan the QR code.



SCAN FOR DETAILS

## NIGHT WATCHMAN GHOST TOURS

Presented by Grape Vine Springs Winery, this walking Ghost Tour happens Fridays and Saturdays. Grapevine has a history of the paranormal and what better way to hear the stories and see the historic locations? The tour begins and ends at Grape Vine Springs Winery with a complimentary glass of wine for each guest on the tour. [GrapevineSpringsWinery.com](http://GrapevineSpringsWinery.com)

## HISTORIC NASH FARM



Experience late 19th century farm life at historic Nash Farm in Grapevine, Texas! The farm grounds are open for self-guided tours daily during regular business hours. Scheduled events and activities throughout the year give additional hands-on opportunities to experience farm life.

Open 9 a.m.–5 p.m. | 626 Ball Street | [NashFarm.org](http://NashFarm.org)

**First Fridays—Spring on the Farm:** Help the farmhands prepare the farm for spring with cultivating, planting and gardening activities. *March 1, 10 a.m. - Noon, \$5 per person.*

**Biscuits and Butter Workshop**—Learn how to make your own biscuits in Nash Farm's 1892 stove and top them with homemade butter. Participants will make their own biscuit mix so you can whip up your own biscuits at home. *March 23, 10 a.m.- 1 p.m., tickets \$45.*

## HERITAGE TRAIL

Take a walk through the past from The **Cotton Belt Depot to Settlement to City Museums!** See how the original settlers on the Grape Vine Prairie lived and worked. This collection of historic sites and museums highlights the cultural and family life of early Grapevine residents and explores how technology helped transform the prairie into the city we now enjoy.

## COTTON BELT SECTION FOREMAN HOUSE



Built in the 1890s, the Cotton Belt Railroad Section Foreman House was built to house the section foreman and his family. The railroad workers who worked for him lived upstairs and were responsible for keeping the tracks of the Cotton Belt Route operational. 701 S. Main Street, *behind the Cotton Belt Railroad Train Depot.*



## ART AND CULTURE

### GRAPEVINE PUBLIC ART TRAIL

Prairie Water is a unique public art feature commemorating this life-sustaining resource precious to settlers. Created with an aeromotor windmill, Prairie Water features a corrugated water tank, windmill fan-blade waterfall and vintage water trough basin. *Located at the Settlement to City Museum complex, 206 W. Hudgins Street.*



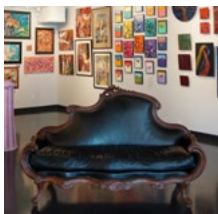
Contact the Visitor Information Center at 817.410.3189 to schedule a 60-minute guided Grapevine Public Art Trail Tour for your group.

### ART GALLERIES

Discover art in the heart of Grapevine's Historic Main Street District. Walk the public art trail and experience Grapevine's bronze sculptures, art galleries, working fine arts studios and creative crafting stores. Hours vary by gallery:

- Giddens Gallery of Fine Art
- RTown Art Studio & Gallery
- Holder Dane Art Gallery & Studio
- Vetro Glass Blowing Studio
- International Porcelain Artists Museum & Gallery
- Palace Arts Center
- Tower & Grand Galleries
- Touch of Paris Art Gallery

### FEATURED ART GALLERY



**Giddens Gallery of Fine Art** is dedicated to featuring original two- and three-dimensional works of art. The Gallery showcases the works of selected artists and provides an upscale venue for the recognition and promotion of the artists' talents. *624 S. Main Street, #100.*

## GRAPEVINE URBAN WINE TRAIL

### FEATURED WINERY



Landon Winery is recognized as being the one of the largest and most awarded wineries in Texas. Their French and American oak barrel-aged wine as well as bourbon barrel-aged wine are just a few examples of what you will find in their production facilities. Landon Winery also offers wine education classes and a weekly Wine Down Wednesday featuring all day wine and food specials. Landon Winery has earned hundreds of medals, awards and recognitions for its wines. *415 S. Main Street.*

## FEATURED GRAPEVINE BUSINESSES



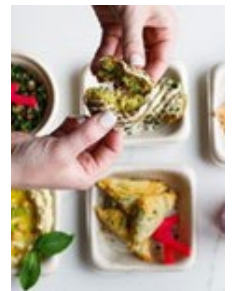
**Weinberger's Deli** serves delicious meaty sandwiches and subs, including their most famous creation, the Italian Beef. Voted Best Deli in Texas for two years in a row, Weinberger's knows that you will love any of their sandwiches and other menu options including hot dogs and gyros. *601 S. Main Street.*

**Willow Cottage Boutique's** passion is to bring customers the most unique gifts, decor, apparel, accessories, bath and body products and more. While there, say hello to Willow, the store's resident cat! *326 S. Main Street.*



**Palio's Pizza Café** offers a variety of authentic Italian dishes prepared fresh to order including pizzas, calzones and pastas, sandwiches, salads and more. Palio's specialties are the Cade & Blake Pizza, calzones and the Pasta Arrabiata, but whatever you order, it's sure to be delicious! *1000 Texan Trail, #100.*

**ZaTaR** serves original family recipes that were brought down through generations. Their menu consists of Mediterranean dishes made from the highest quality ingredients, and include juicy lamb kabobs, an assortment of hummus dips, Jerusalem falafels, Greek gyros, ZaTaR pies and shawarma on a spit. *815 S. Main Street, inside Harvest Hall.*



**Bottlecap Alley Icehouse Grill** serves beer and comfort food including build-your-own burgers in a loft-like sports bar. The food is fresh, never frozen, with 100% Angus beef, artisan buns, all freshly cut toppings prepared in-house, never in a bag or pre-cut. *TX-114, # 614, located in the Grapevine Towne Center.*

**Kountry Donuts** features a selection of delicious donuts, kolaches, bagels and other goods. Constructed in 1934, this building was once the site of the Bart H. Starr Friendly Service Station, made with native rock taken from the farm of the owner's father, who was also the first mayor of Grapevine. *102 S. Main Street.*



LOCAL ENTERTAINMENT							
Venue	Mon.	Tues.	Wed.	Thurs.	Fri.	Sat.	Sun.
Big Fish Seafood Grill & Bar			Live Music			Live Music	
Bottlecap Alley				Trivia			
Bull Lion Winery						Live Music	
Chez Fabien						Live Music	
Chicken N Pickle		Trivia				Bingo	
Chill Bar & Grill	Trivia	Bingo	Live Music		DJ		
Cross Timbers Winery						Live Music	
Dino's Steak and Claw House							
Farina's Winery & Café						Live Music	
Flip's Patio Grill		Trivia					
Glass Cactus at Gaylord Texan						Live Music	
Grapevine Springs Winery						Karaoke Fridays/ Ghost Tour	
Hop & Sting Brewing Co.		Hop & Sprint	Bikes & Brews		Bend & Brew	Live Music	Trivia
Mason and Dixie						Live Music	
Piaf Kitchen+Wine+Bar						Live Music	
Silver Bar at Gaylord Texan						Live Music	
Sloan & Williams Winery						Live Music	
Teatro						Live Music	
Texas Star Dinner Theater						Murder Mystery	
Third Rail at Harvest Hall		Themed Trivia Night	Music Bingo	Live Band/ Karaoke		Live Music	
Tolbert's Restaurant						Live Music	
Willhoite's Restaurant		Karaoke				Live Music	

## VISITOR INFORMATION CENTER

Inside Grapevine Main Station, 815 S. Main St.  
11 a.m. – 6 p.m. Monday–Thursday  
9:30 a.m.–6 p.m. Friday–Sunday

- Complimentary Visitor Planning Services
- Souvenir and Sundry Shop
- Board Games & Card Games
- Free "Welcome to Grapevine" Visitor Packet
- Event & Attraction Tickets
- Luggage/Coat Check Service  
\$2 per day, per bag
- Observation Tower Tickets \$3

817.410.3189 | GVMVC@GrapevineTexasUSA.com

## GRAPEVINE CALENDAR OF EVENTS

View the full calendar of events taking place throughout the city.



Events and schedule subject to change without notice

## UPCOMING SHOWS AT THE PALACE THEATRE



Walkin' the Line  
A Tribute to  
Johnny Cash  
March 2, 3 & 7:30 p.m.



Sweet Baby James  
Tribute to  
James Taylor  
March 23, 7:30 p.m.



Satisfaction  
Tribute to the  
Rolling Stones  
April 13, 3 & 7:30 p.m.



Scan for tickets.



TRINITY METRO  
**TEX**Rail

Visit Grapevine via Trinity Metro TEXRail, which stops right in the heart of Grapevine's Historic Main Street District.

  
**GRAPEVINE MILLS**  
A SIMON CENTER

Enjoy 1.8 million square feet of shopping under one roof plus LEGOLAND® Discovery Center, SEA LIFE Grapevine Aquarium and Peppa Pig World of Play! The complimentary Grapevine Visitors Shuttle makes hourly stops at Grapevine Mills Wednesday–Saturday.