

GRAPEVINE EXPRESS

Grapevine, Texas

VISITOR NEWSLETTER

May 2024

Produced by the Grapevine Visitor Information Center

GRAPEVINE VINTAGE RAILROAD

Step aboard the golden age of the railroad and get ready for a family-friendly excursion on the rails! The Grapevine Vintage Railroad (GVRR)—located in the heart of Historic Downtown Grapevine—offers a unique experience on authentic 1920s coaches.



Grapevine Bear Creek Short Line: \$10-12, **Cotton Belt Route:** \$18-26, \$72, **Trinity River Train Excursion:** \$10-12

MOTHER'S DAY SPECIAL

Celebrate Mother's Day on board the Grapevine Vintage Railroad and create wonderful memories with someone special. May 12, 12:50 p.m.

MEMORIAL DAY WEEKEND TRAIN

Enjoy special rates for service members and their families. May 25, Noon & 2 p.m.

PLANES & TRAINS GUIDED TOUR

Enjoy a tour of Grapevine Main Station & Observation Tower followed by a stroll through the Historic Cotton Belt Depot and a one-hour excursion aboard the Grapevine Vintage Railroad. A chartered ride on the Grapevine Visitors Shuttle will then take guests through the Historic Main Street District to a final stop at Founders' Plaza at Dallas Fort Worth International Airport. \$22 per ticket.

Tickets and schedule at GVRR.com

FEATURED ART & CULTURE EVENTS

Texas Star Dinner Theater – Derailed and Departed (running until November 9), \$62.95

Vetro Glassblowing Studio & Gallery – Help Create Stemless Wine Glasses (May 4 and 11) \$65, and Help Create Paperweights (May 25), \$55.

Holder Dane Gallery & Art Studios – Mother's Day Abstract Painting with Prompts (May 11, 3 - 6 p.m.), \$120 per person.

Palace Arts Theatre – Ella Fitzgerald and the Songbirds of Swing (May 11), \$44, The Lone Star King Festival – (May 24-26), Weekend Ticket Bundle - \$330-\$390, daily tickets \$40 - \$100.

Grapevine Convention & Visitors Bureau Tower Gallery – Art of Mosaics, featuring Crazy Horse Art Studio, RTown Art Gallery, Holder Dane Gallery & Art Studios, Legoland Discovery Center, Rin Doughney Stained Glass and Meow Wolf, FREE.

UPCOMING EVENTS



40th Annual Main Street Fest - A Craft Brew Experience, presented by Bank of the West, May 17, 18 & 19, 2024 is set to swing into action, transforming the heart of Grapevine into a family-friendly celebration showcasing a unique blend of craft brews, live entertainment and community spirit. Main Street Fest also includes a Carnival Midway, KidZone and countless food and shopping vendors. Tickets to Main Street Fest are \$9 for adults and \$5 for children 6 - 12 and seniors 62+. Weekend passes are \$20, and admission is free until 5 p.m. Friday, May 17. To learn more, visit MainStFest.com.



New to Main Street Fest this year, the all-new Cotton Belt Country Club is sure to be a hole-in-one! Craft brew enthusiasts and golf aficionados alike will enjoy this one-of-a-kind experience. Located at the Grapevine Vintage Railroad's Historic Cotton Belt Depot, guests will find a host of engaging golf-themed activities that celebrate the spirit of the sport and craft brews including mini-golf, a putt and long drive contest and brews by the glass. Guests can also purchase a "membership" to the Country Club with access to the Clubhouse Pavilion featuring special seating, a private bar and a commemorative ball marker.



44th Texas Women's Open Golf Tournament PGA's competitive tournament for 144 of the best professional and amateur golfers in the country, competing for a \$75,000 purse. Proceeds from the tournament will benefit the Northern Texas PGA Foundation's scholarship program. *May 29-31, Grapevine Golf Course.*

THE PALACE ARTS CENTER



The Historic Palace Theatre, a restored 1940s art deco-style theater, makes going to the movies a special occasion. Enjoy classic movies and live entertainment throughout the year.



Scan for schedule and tickets.

It's Spring Break at the Palace! Bring the kids and enjoy special movies and Cartoons and Crafts. *March 11–15*

300 S. Main Street. | Palace-Theatre.com

HISTORIC NASH FARM



Experience late 19th century farm life at historic Nash Farm in Grapevine, Texas! The farm grounds are open for self-guided tours daily during regular business hours. Scheduled events and activities throughout the year give additional hands-on opportunities to experience farm life.

Open 9 a.m.–5 p.m. | 626 Ball Street | NashFarm.org

First Fridays—From Sheep to Shawl: Help the farmhands and learn about the many uses of fleece and wool. *May 3, 10 a.m. – 12 noon, \$5 per person.*

GRAPEVINE OBSERVATION TOWER



See all the points of interest in Grapevine and the Dallas-Fort Worth Metroplex from 150 feet in the air. Informational panels provide visitors with an overview of Grapevine history and attractions. Purchase walk up tickets at the Visitor Information Center or online at GrapevineTexasUSA.com. *Private Group Tours may be arranged with seven-day advanced notice.*

GRAPEVINE VISITORS SHUTTLE



Ride the Grapevine Visitor Shuttle for Free!

The Grapevine Visitors Shuttle is an excellent way to see Grapevine! Fully air conditioned, it stops outside Grapevine Main Station and at a variety of attractions around town. For a visitor shuttle map, including pick up times, please visit the Visitor Information Center or scan the QR code.



SCAN FOR DETAILS

GRAPEVINE WINE TOURS

Book your corporate party, birthday celebration, Girls Night Out or other special events at Grapevinewinetours.com, \$129 - \$139.

NIGHT WATCHMAN GHOST TOURS

Presented by Grape Vine Springs Winery, this walking Ghost Tour happens Fridays and Saturdays. Grapevine has a history of the paranormal and what better way to hear the stories and see the historic locations? The tour begins and ends at Grape Vine Springs Winery with a complimentary glass of wine for each guest on the tour. GrapevineSpringsWinery.com

ART AND CULTURE

GRAPEVINE PUBLIC ART TRAIL

Share the Dream depicts three children, the sculpture created by artist Dennis Smith symbolizes the love of flight and the spirit of the original dream that became Dallas Fort Worth International Airport. It is dedicated to future generations, hoping to serve as a reminder that dreams can become a reality. 1700 N. Airfield Dr. at Founder's Plaza.



Contact the Visitor Information Center at 817.410.3189 to schedule a 60-minute guided Grapevine Public Art Trail Tour for your group.

ART GALLERIES

Discover art in the heart of Grapevine's Historic Main Street District. Walk the public art trail and experience Grapevine's bronze sculptures, art galleries, working fine arts studios and creative crafting stores. Hours vary by gallery:

- Giddens Gallery of Fine Art
- RTown Art Studio & Gallery
- Holder Dane Art Gallery & Studio
- Vetro Glass Blowing Studio
- International Porcelain Artists Museum & Gallery
- Palace Arts Center
- Tower & Grand Galleries
- Touch of Paris Art Gallery

FEATURED ART GALLERY



Meow Wolf opens portals of possibility, redefining the paradigm of art and storytelling to make a positive difference in the world. Meow Wolf transports audiences of all ages into a fantastic immersive and interactive realm. Based in Santa Fe, Meow Wolf collaborates with many local artists in each of the four exhibition locations. 300 Grapevine Mills Pkwy, Suite 253, inside Grapevine Mills.

GRAPEVINE URBAN WINE TRAIL

FEATURED WINERY



Messina Hof Grapevine Winery is located in the replica of the Wallis Hotel in Historic Downtown Grapevine in a charming 19th century environment. They are one of the most highly regarded and awarded wineries, crafting wines for over 40 years. 201 S. Main Street.

FEATURED GRAPEVINE BUSINESSES



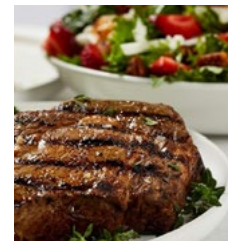
At **Teatro Bistro & Cocktail Lounge**, time fades away and delights dance as each dish becomes a chapter in a culinary tale. Every bite is a stanza that awakens the senses, immersing you in a dream of flavors that defy reality. They don't just serve food; they distill the essence of a gastronomic romance unfolding in every corner of their stage. 120 S. Main Street., #50.

Little Orange Fish is a whimsical boutique for trendy children's & infants' clothing, toys, gifts and furniture. 601 S. Main Street, #101.



Daily Pho serves traditional Vietnamese flavors to Grapevine and the surrounding communities. 437 E. Northwest Highway.

Firebirds Wood Fired Grill is known for their warm atmosphere, scratch kitchen and wood fired grill. They welcome guests to gather for hand-cut aged steaks, fresh seafood, craft cocktails and so much more, including happy hour at the Firebar or on the patio. Come experience Firebird's top-notch service and upscale dining at a modest price. 450 W. State Highway 114.



Old West Café, voted "Best Breakfast and Homestyle Lunch" for 15+ years, is known for great tasting home cooking. Their breakfast menu offers delicious dishes such as eggs benedict, cinnamon swirl and banana nut pancakes, and breakfast skillet and omelets for the hungry cowboy and cowgirl. Lunch items include chicken fried steak, salads, potatoes, Tex-Mex specialties, burgers and more. 600 W. Northwest Highway.

Pinch of Salt Pastries' all-female team serves up gluten-free and allergy-friendly delicious treats that can be enjoyed by everyone, along with a sprinkle of salt that improves all things sweet. A full coffee service is provided by Love Local Coffee & Art Shop. 1900 S. Main Street. #103.



LIVE MUSIC & LOCAL ENTERTAINMENT

Venue	Mon.	Tues.	Wed.	Thurs.	Fri.	Sat.	Sun.
Big Daddy's Cantina					Live Music		
Big Fish Seafood Grill & Bar			Live Music			Live Music	
Bottlecap Alley				Trivia			
Bull Lion Winery					Live Music		
Chez Fabien					Live Music		
Chicken N Pickle		Trivia				Bingo	
Chill Bar & Grill	Trivia	Bingo	Live Music		DJ		
Cross Timbers Winery						Live Music	
Dino's Steak and Claw House	Piano Music						
Farina's Winery & Café					Live Music		
Flip's Patio Grill		Trivia					
Glass Cactus at Gaylord Texan					Live Music		
Grapevine Springs Winery					Karaoke Fridays/Ghost Tour		
Hop & Sting Brewing Co.		Hop & Sprint & Music Bingo	Bikes & Brews & Brew Feud		Bend & Brew/ Live Music		Trivia
Hotel Vin Lobby Lounge					Live Music		
Hotel Vin Rioja Rooftop					DJ		
JudyPie		Pie Bingo					
Mason and Dixie					Live Music		
Piaf Kitchen+Wine+Bar					Live Music		
Silver Bar at Gaylord Texan					Live Music		
Sloan & Williams Winery					Live Music		
Teatro					Live Music		
Texas Star Dinner Theater					Murder Mystery		
Third Rail at Harvest Hall		Themed Trivia Night	Music Bingo	Live Band/ Karaoke	Live Music		
Tolbert's Restaurant	Live Music						
Willhoite's Restaurant		Karaoke			Live Music		

UPCOMING SHOWS AT THE PALACE THEATRE



**Ella Fitzgerald
Tribute Show**
May 11, 3 p.m.



**Lone Star King
Festival 2024**
May 24-26



**Piano Man
The Billy Joel
Experience**
June 22, 3 p.m.



Scan for tickets.



Scan here to view
the full calendar of
events taking place
throughout the city.



Visit Grapevine via Trinity Metro TEXRail,
which stops right in the heart of Grapevine's
Historic Main Street District.

VISITOR INFORMATION CENTER

Inside Grapevine Main Station, 815 S. Main St.
11 a.m. - 6 p.m. Monday-Thursday
9:30 a.m. - 6 p.m. Friday-Sunday

- Complimentary Visitor Planning Services
- Free "Welcome to Grapevine" Visitor Packet
- Luggage/Coat Check Service
\$2 per day, per bag
- Souvenir and Sundry Shop
- Board Games & Card Games
- Event & Attraction Tickets
- Observation Tower Tickets
\$3

817.410.3189 | GVMVC@GrapevineTexasUSA.com



- Meow Wolf Grapevine
- LEGOLAND® Discovery Center
- Peppa Pig World of Play
- SEA LIFE Grapevine Aquarium
- Rainforest Café