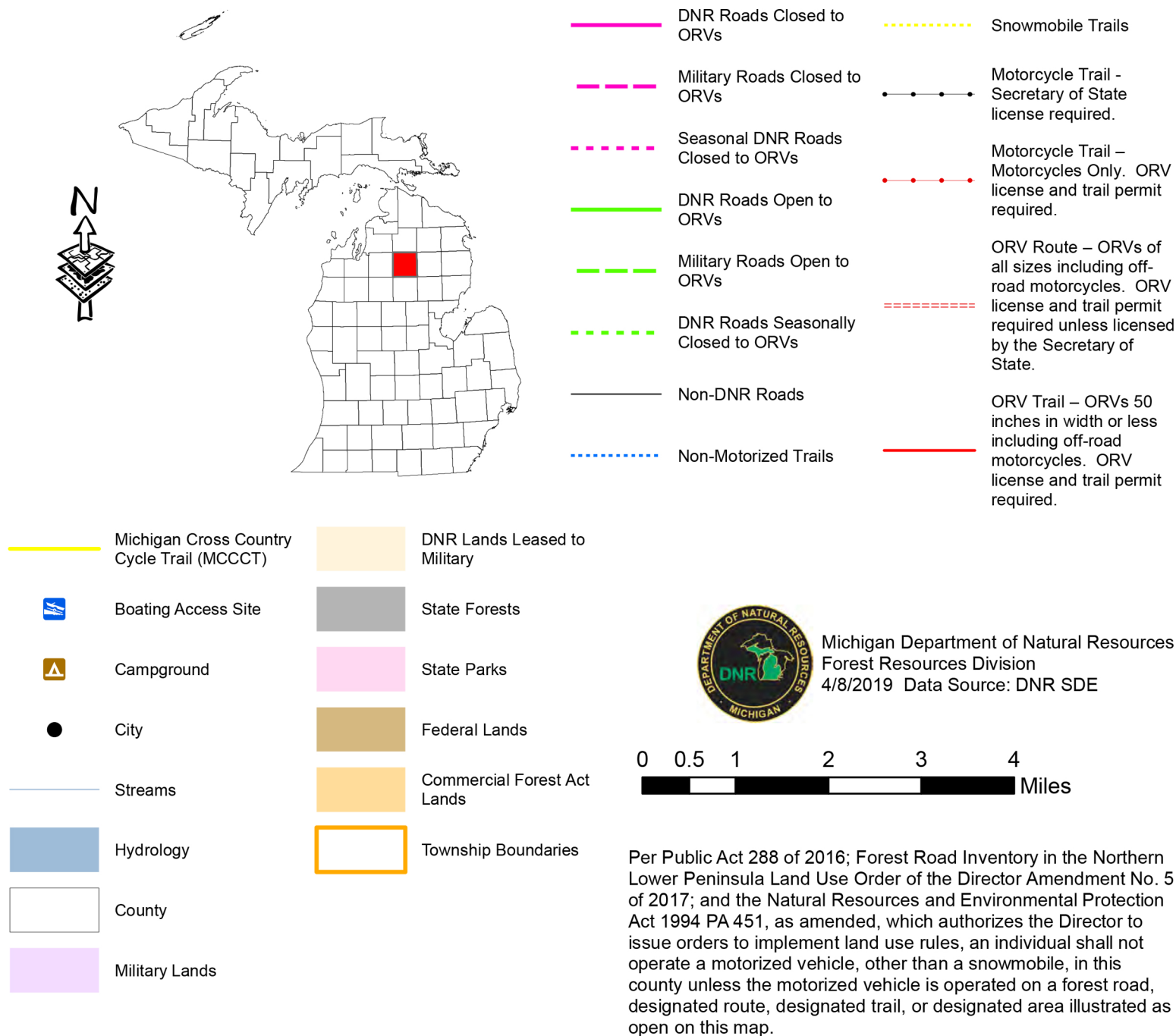


Crawford County DNR Forest Roads Map



READ IF YOU PLAN TO PRINT MAPS:

1) If you plan to piece the maps together - print **actual size** (do not fit to page) or they will not fit together properly

2) Instructions for Piecing Together the Maps:

- 1) Cut Bottom Left, Bottom Right and Bottom Center as Marked
- 2) Using Overlap Marks, Piece the Bottom Left and Bottom Right over the Bottom Center and Adhere.
- 3) Cut Upper Left, Upper Right and Upper Center as Marked
- 4) Using Overlap Marks, Piece the Upper Left and Upper Right over the Upper Center and Adhere.
- 5) Using Overlap Marks, Piece the Bottom Maps to the Upper Maps and Adhere. **You now have a large copy of the full map from page 2.**



Directional

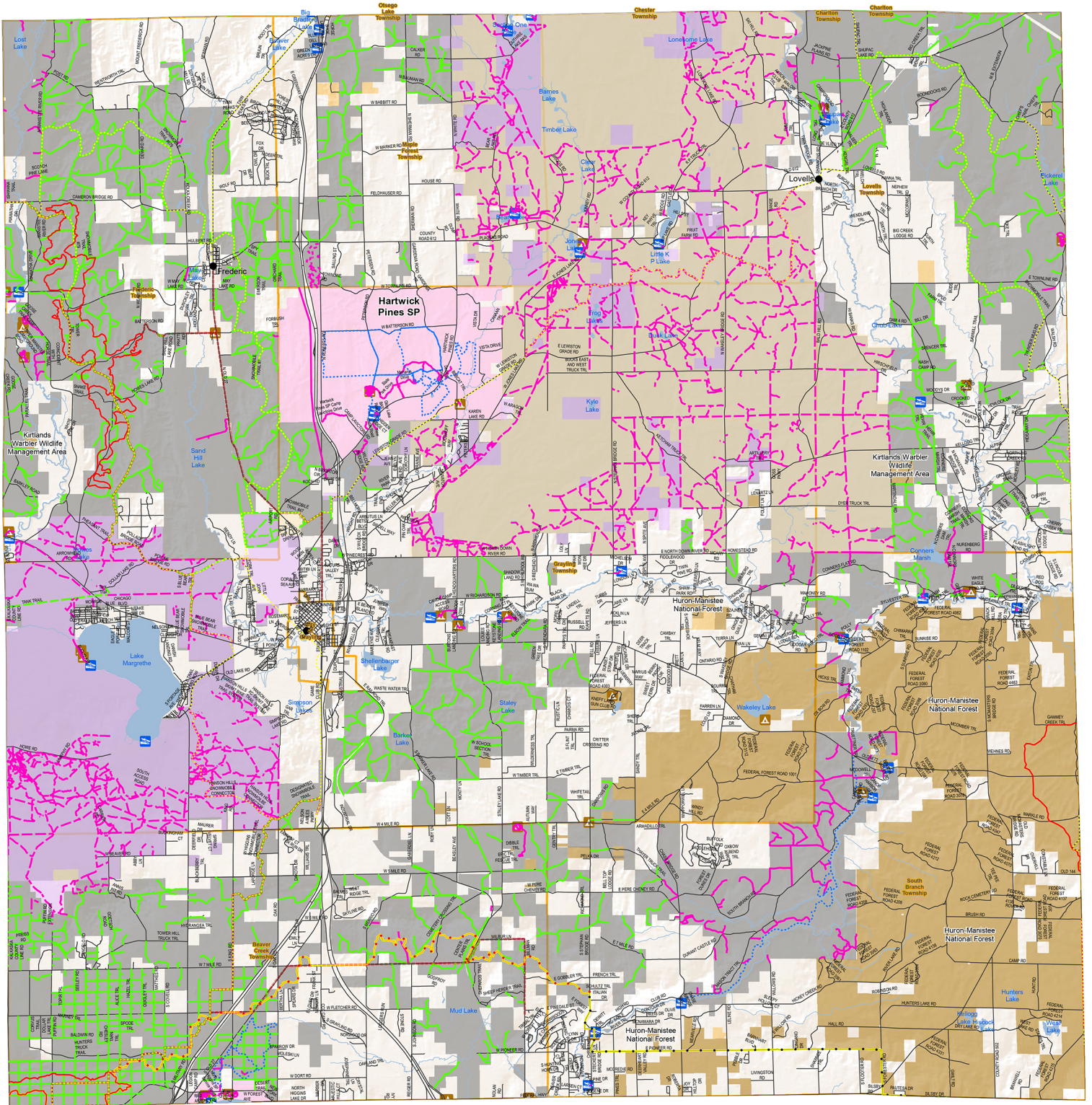
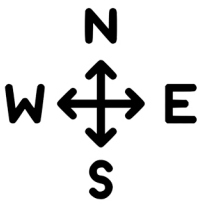
There is one of these on each page to help assist keeping the maps properly orientated.



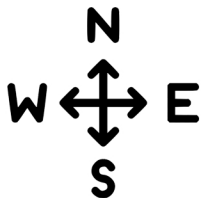
Cut a straight line completely across where these are present.



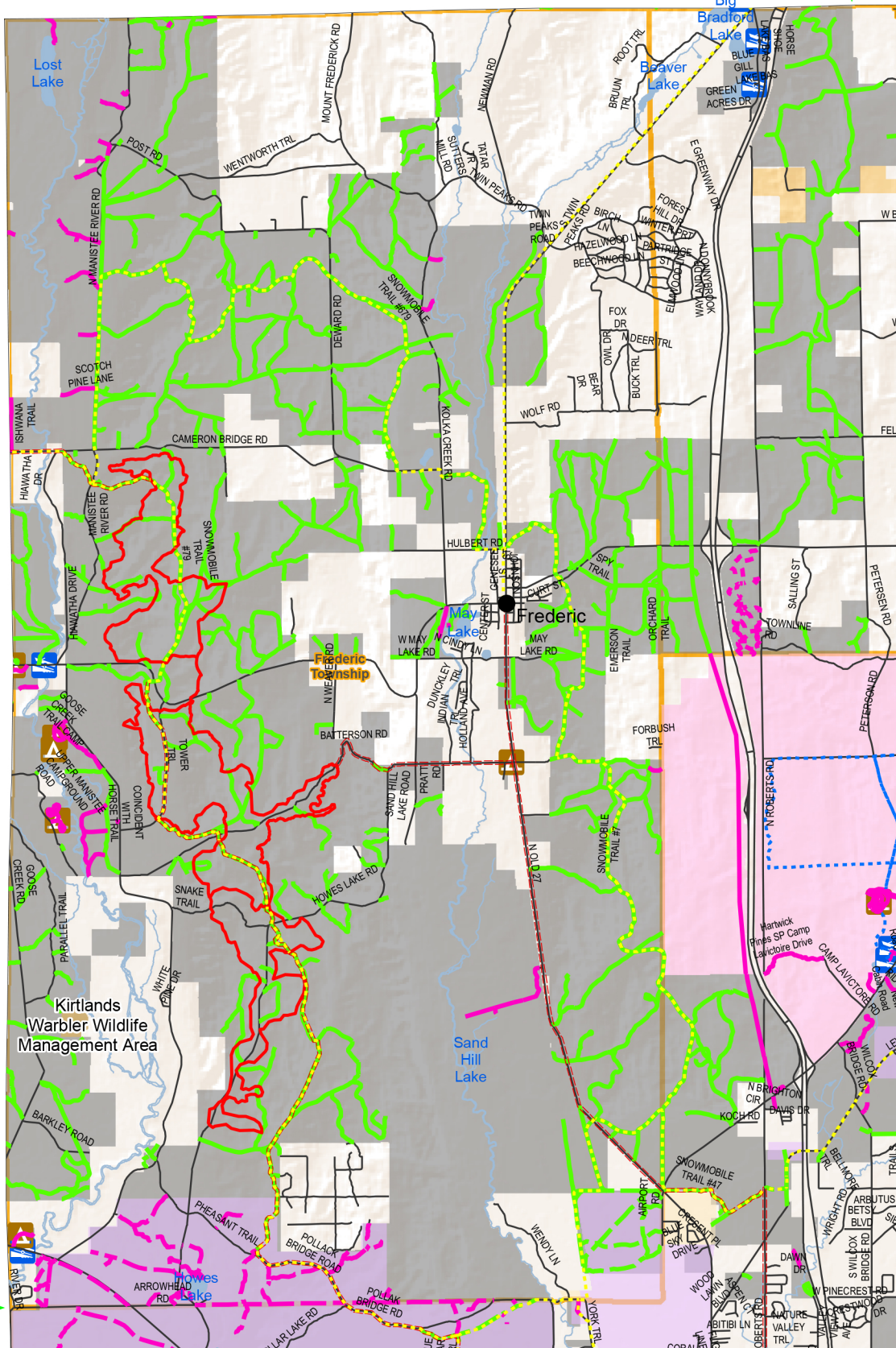
Overlap these as marked



Upper Left



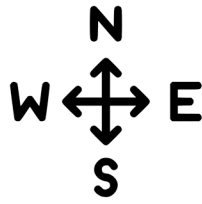
Overlap here
with Upper Center Map



Overlap here
with Lower
Left Map

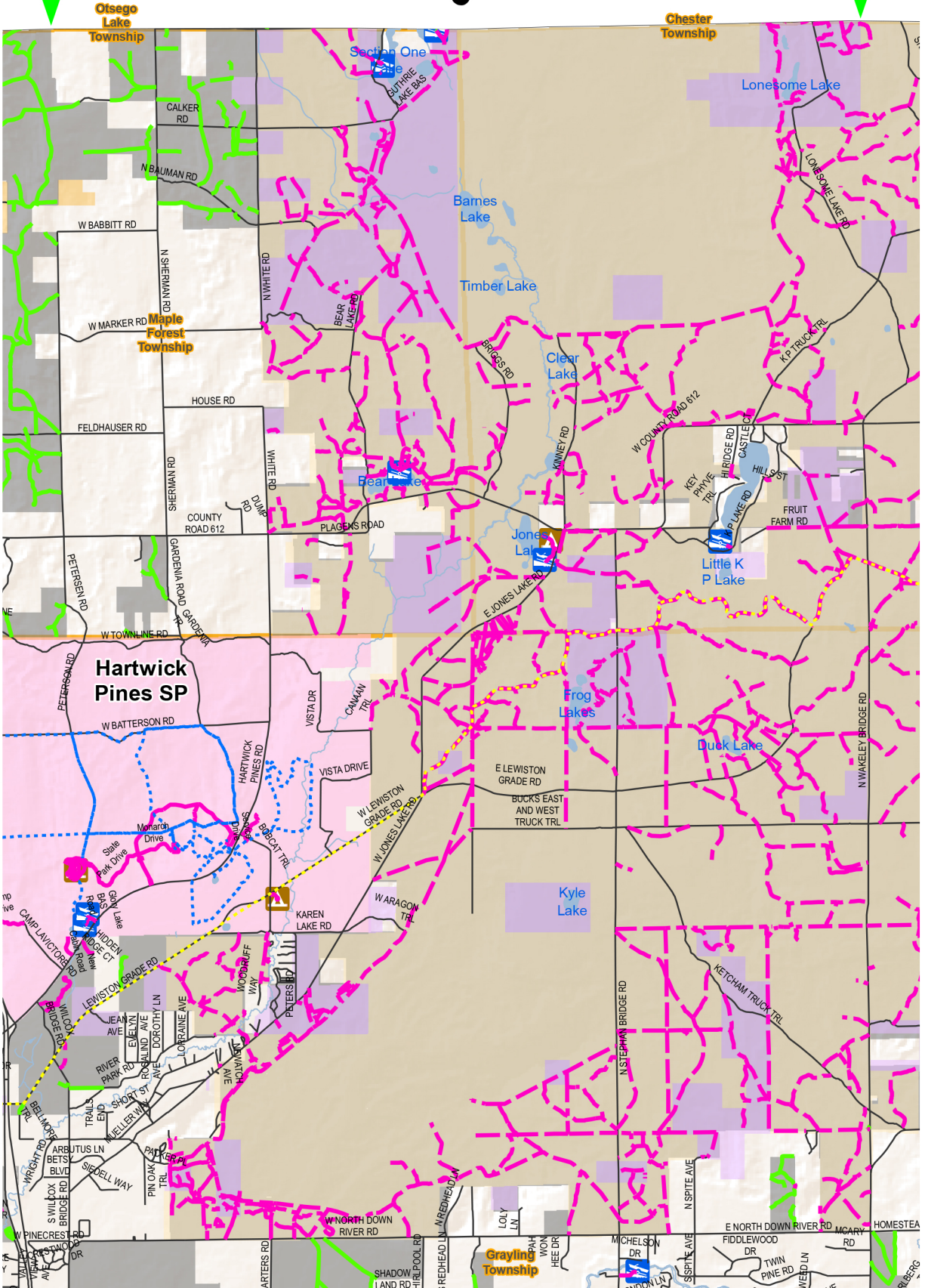
Upper

Center



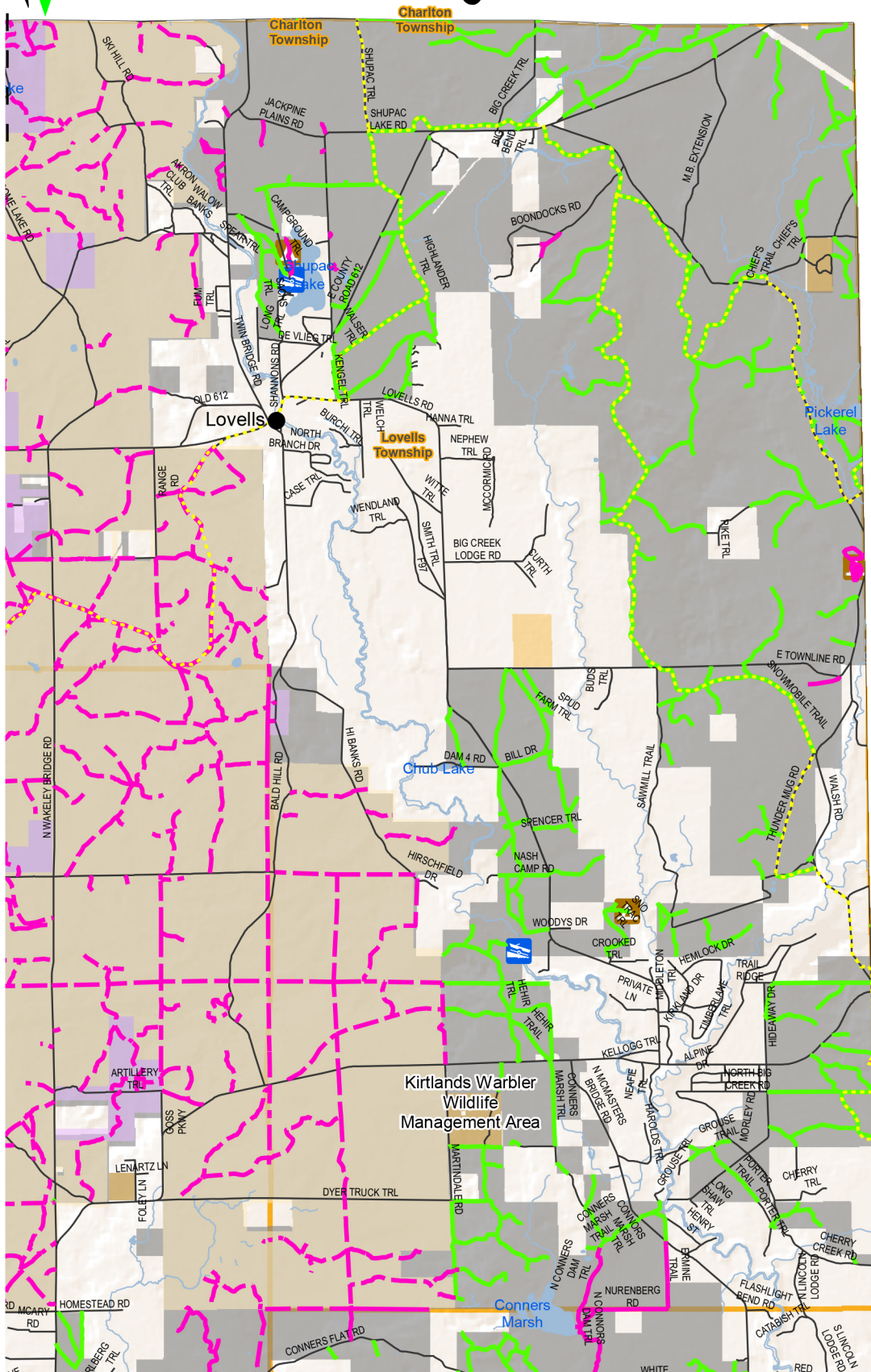
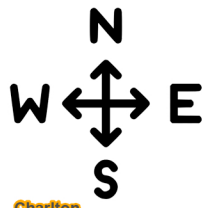
Overlap here
with Upper Left Map

Overlap here
with Upper Right Map



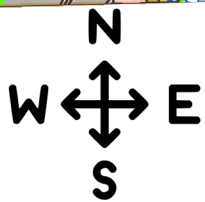
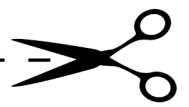
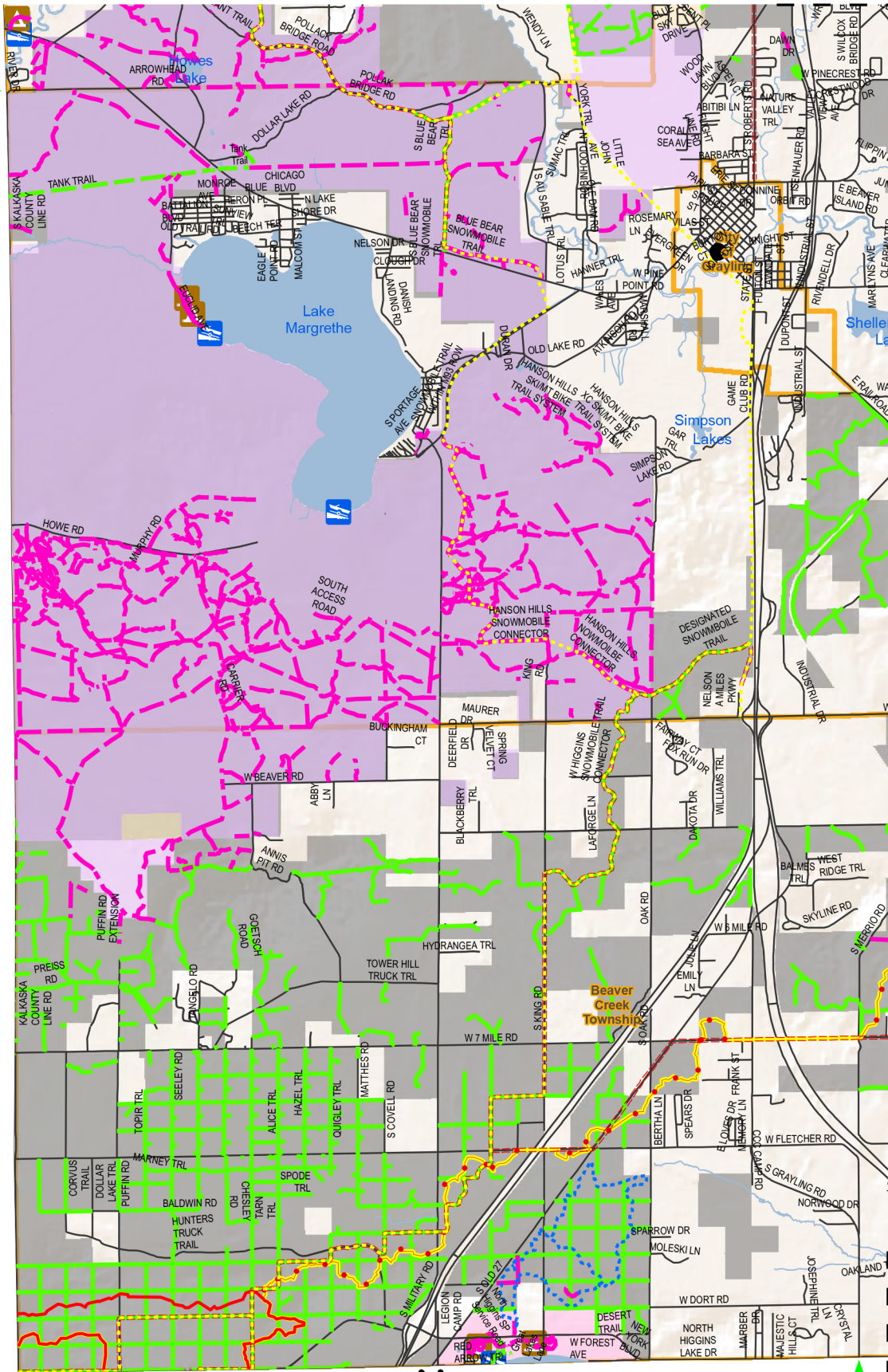


Overlap here
with Upper Center Map



Overlap here
with Lower
Right Map

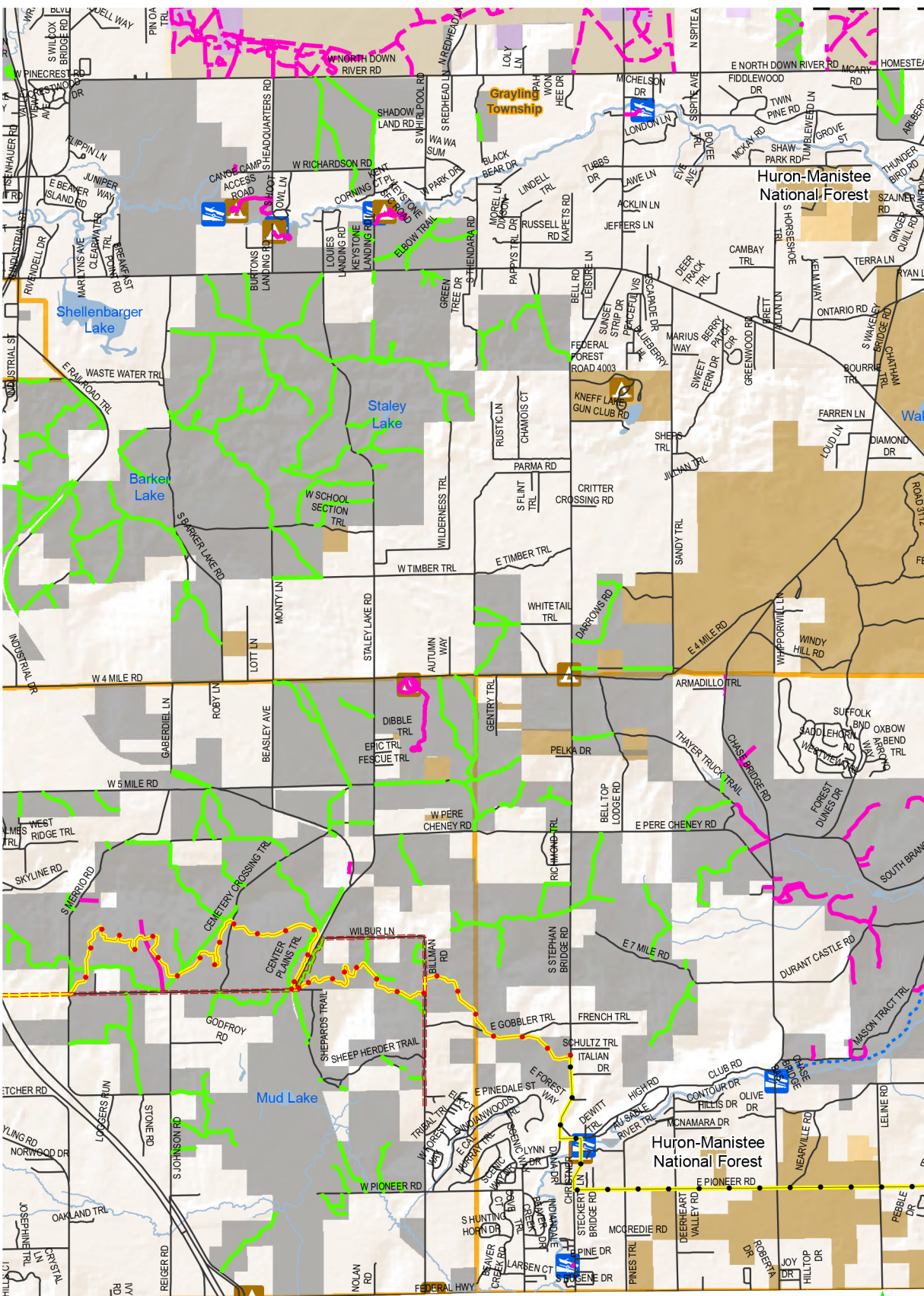
Overlap here
with Upper
Left Map



Overlap here
with Lower Center Map

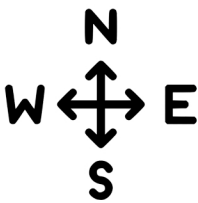


Lower Left



Overlap here
with Lower Left Map

Overlap here
with Lower Right Map

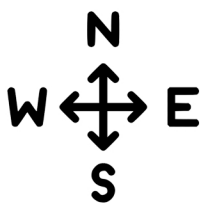


Lower

Center



Overlap here
with Lower Center Map



Lower Right