

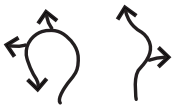
ROUNDAABOUTS

IN HAMILTON COUNTY

With over 150 roundabouts in Hamilton County, and more planned or under construction, it is very likely you will experience one while visiting. A roundabout is a type of circular intersection or junction in which road traffic flows almost continuously in one direction around a central island. Studies show this alternative to traditional intersections improves traffic flow and reduces pollution.

Tips FOR DRIVING A ROUNDAABOUT

1 APPROACHING & ENTERING



Take note of the posted sign as you approach, especially with double lane roundabouts. Straight and turn lanes can vary by roundabout. Slow down and enter the roundabout.

Look to the left. Vehicles already in the roundabout have the right-of-way.



If there is traffic present, wait until it clears. Be sure to watch for pedestrians and cyclists.

If there is no traffic in the roundabout, enter and do not stop.

2 WITHIN THE ROUNDAABOUT

Always drive counter-clockwise. Do not stop in the roundabout. Keep moving with the flow of traffic.



3 EXITING

Keep your car in the same lane as you enter and exit the roundabout. Be sure to watch for pedestrians and cyclists.

