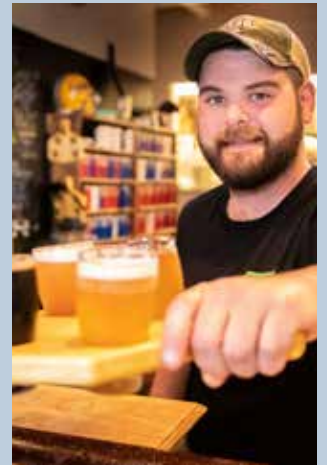




Group Planner

Groups.VisitHersheyHarrisburg.org

Visit
HERSHEY &
HARRISBURG



Come Together for Group Tour Travel

We're thrilled you're considering the Hershey Harrisburg Region for your next group outing! Arranging a getaway can be hassle-free when you enlist the experts at Visit Hershey & Harrisburg who work closely with a variety of group-friendly venues and services to ensure the planning process is streamlined and smooth. To see all that the region has to offer, browse through the listings in this publication and visit Groups.VisitHersheyHarrisburg.org for sample itineraries, group services, and more. When you're ready to get your plans on paper, reach out to Sandy Stewart, Group Sales Manager. You'll be in good hands with a professional who's helped coordinate hundreds of group tours to the Hershey Harrisburg Region. We'll see you soon!

Group Planner Services

Promotional Support
On-site Support
VIP Greetings
Site Inspections
Local Attraction Information
Shuttle Service
Referrals & Coordination
Welcome Bags
Venue Procurement

Table of Contents

Attractions	5
Lodging	19
Transportation	32
Dining	34
Catering/Services	39



Sandy Stewart
Group Sales Manager
717.231.2988
Sandy@hersheyharrisburg.org



Audrey Bialas
Director of Sales
717.231.2993
Audrey@hersheyharrisburg.org

The Hershey Harrisburg Region Group Planner is the official group tour planner of Visit Hershey & Harrisburg. Photos throughout this publication are courtesy of Visit Hershey & Harrisburg unless otherwise indicated. Cover photo credits: *Hersheypark* photo courtesy of Hershey Entertainment & Resorts Company.

Copyright 2020 by Visit Hershey & Harrisburg. All rights reserved. Reproduction or use without permission of editorial or graphic content in any manner, including electronic reproduction, is prohibited.

Large and City-wide Events in the Hershey Harrisburg Region

2020 The Salvation Army Congress Commission | June 9-15
2020 Summer Genesis Elite Combine (Lacrosse) | June 20-21
2020 USJN Hershey Showcase (Basketball) | June 27-30
2020 Mecum Car Auction | July 29 to August 1
2020 Eastern Division National Fall Meet | October 7-10
2020 Pennsylvania National Horse Show | October 8-17

2020 American Rabbit Breeders Assn. Convention | October 17-21
2020 Joyce Meyer Hershey | November 13-14
2020 PA Christmas & Gift Show | Dec 2-6
2021 PA Farm Show | January 9-16
2021 PIAA Competitive Spirit Championships | January 15-16
2021 Great American Outdoor Show | February 6-14

For a full list of events: VisitHersheyHarrisburg.org/Events

Icon Key:



Stay With Us! We're Close To It All!

Location. Location. Location! The Hershey Harrisburg Region is close to some of Pennsylvania's most popular attractions, making us an ideal "hub and spoke" destination for groups. In less than an hour, you can visit some of our neighboring Partner attractions!



*Times are approximate

Mileage Chart

Follow the rows and columns on the chart to calculate the approximate mileage between our popular attractions. **Example: It is approximately 15 miles between the AACA Museum and National Civil War Museum.**

	Hersheypark / Chocolate World / Giant Center	Hershey Gardens & Conservatory	The Hershey Story Museum	AACA Museum, Inc.	Hershey Theatre	Adventure Sports in Hershey	Echo Dell, Indian Echo Caverns	Lake Tobias Wildlife Park	National Civil War Museum	Whitaker Center for Science/Arts	Harrisburg Mall	PA Farm Show Complex & Expo	Escape Room at ABC East Lanes	The Pride of the Susquehanna	PA State Capitol
Hershey Gardens & Conservatory	2														
The Hershey Story Museum	>1	2													
AACA Museum, Inc.	2	3	3												
Hershey Theatre	2	1	<1	3											
Adventure Sports in Hershey	5	6	4	7	4										
Echo Dell, Indian Echo Caverns	5	6	5	6	5	7									
Lake Tobias Wildlife Park	36	36	36	34	36	38	32								
National Civil War Museum	14	14	14	15	14	16	10	23							
Whitaker Center for Science/Arts	14	15	14	15	15	16	10	22	2						
Harrisburg Mall	12	13	12	11	13	14	8	27	3	3					
Farm Show Complex & Expo Center	17	17	17	15	18	20	14	20	2	3	5				
Escape Room at ABC East Lanes	21	19	11	10	11	14	8	28	6	6	4	7			
Pride of the Susquehanna	15	16	15	16	15	17	11	23	3	1	4	3	7		
PA State Capitol	15	15	15	16	14	17	11	23	3	>1	4	2	7	1	
Hollywood Casino at Penn National	15	8	9	9	9	13	13	33	16	17	17	16	19	18	17

Hershey Area
Harrisburg Area

Kisses, Coasters, Cars & More!

HERSHEYPARK®

Discover a place for sweet family fun, educational escapes, and memorable group trips! With 15 coasters for the daredevils, an 11-acre water park for splash fans, and a zoo for the animal lovers, you'll find **endless entertainment** for all ages and interests. The park has a full summer schedule and seasonally themed special engagements making it a year-round getaway! *Hersheypark* also has **exclusive offerings** for school groups to blend learning and fun, and for performance groups, where singers, dancers, and bands can take the stage!

New for 2020, *Hershey's ChocolateTown*™ is an all-new region of *Hersheypark* featuring *The Chocolatier*™, a full-service restaurant; *The Sweeterie*™, a scratch confectionery kitchen; and *Milton's*™ Ice Cream Parlor.

HERSHEY'S CHOCOLATE WORLD ATTRACTION

Guests are greeted with the scent of **chocolate** the moment they walk in the door! **Sweet activities** include the free Chocolate Tour Ride, complete with a complimentary Hershey's product sample, the Create Your Own Candy Bar attraction, Hershey's Unwrapped tasting experience, the 4D Chocolate Movie digital animation show, and more. **Stock up** on your favorite (and tough-to-find) Hershey's brand confections in the World's Largest HERSHEY'S Candy Store. After they've filled a bag with goodies, discover something new about America's sweetest town with a Hershey Trolley Works tour.

THE HERSHEY STORY, THE MUSEUM ON CHOCOLATE AVENUE

For well over 100 years, Hershey has been synonymous with the Great American Chocolate Bar. Start at the beginning of "The Hershey Story," an **inspirational journey** through the life of Milton S. Hershey. Learn about the man, his chocolate company, the town that bears his name, and everything about his **philanthropic legacy**. Save room for a 45-minute, hands-on class in the Chocolate Lab!

AACA MUSEUM, INC.

Cruise through time with vintage cars, buses, motorcycles, and other memorabilia in period-themed scenes at this world-class automotive museum! With an **interactive kids' area** and changing exhibits, the AACA Museum is a great attraction for all ages and interests. Not to mention it's recognized by the Smithsonian as an Affiliate Museum, an extremely rare honor that speaks well of its **pristine collection**.

HERSHEY GARDENS & CONSERVATORY

What began as a request from Mr. Hershey for a "small garden of roses" now spans more than 20 acres of breathtaking flower beds, tree groves, and shrub lined pathways **overlooking the town of Hershey**. Being here when it's in bloom is a sight to behold, but its 14,000-square foot conservatory and tropical Butterfly Atrium makes it a **year-round must-see**.



HERSHEY'S CHOCOLATE
WORLD ATTRACTION



THE HERSHEY STORY, THE
MUSEUM ON CHOCOLATE AVENUE

Art, History, Tours & More!

PENNSYLVANIA STATE CAPITOL BUILDING

See the **architectural and artistic** highlights of our Capitol building, a place President Teddy Roosevelt called “the handsomest building” he’d ever seen! Take a free, guided tour through this “Palace of Art,” featuring its famous collection of stained-glass windows, indoor and outdoor sculptures, lush décor, and **impressive murals and paintings**. Stop by the kid-friendly interactive Welcome Center to learn about Pennsylvania history and legislative processes of the Commonwealth.

THE NATIONAL CIVIL WAR MUSEUM

Discover the whole story of the American Civil War, a restless chapter of our nation’s history, as told from **both sides of the battlefield**. The Smithsonian-affiliated National Civil War Museum has two floors of exquisite exhibits and thousands of **three-dimensional relics**, including uniforms, weapons, and personal effects of the fallen soldiers.

PRIDE OF THE SUSQUEHANNA RIVERBOAT

Get a unique perspective of the city from the top deck of the Pride of the Susquehanna Riverboat, one of only six **authentic paddlewheel** riverboats in the country. Float along the mighty Susquehanna River while enjoying live music, a hand-crafted cocktail, or a sunset dinner cruise. Check the schedule for **themed cruises**, such as Pirates and Princesses. Saturday mornings provide a boatload of education during the Susquehanna River School, a **floating classroom** teaching kids about the river’s ecology and how to be good stewards of the environment.

STEP-ON GUIDES

Instead of exploring the city on your own, consider enlisting the help of one of our region’s **knowledgeable and professional** guides. Invite a historian onto your bus to provide unique windshield tours and historical **narration**. Get the inside scoop on Harrisburg’s best restaurants with a **foodie tour** or discover the meaning behind the city’s breathtaking murals with a guided walk. Let us show you around!



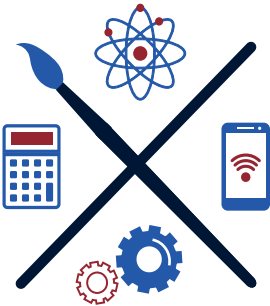
DOWNTOWN MURALS



PRIDE OF THE
SUSQUEHANNA RIVERBOAT

STEM, Scouting & Home School Activities

The Hershey Harrisburg Region is not your average field trip, with our sweet mix of fun and learning. Allow your class or troop to get hands-on, earn scout badges, and exercise their minds with interactive experiences that never cease to amaze, entertain, and teach.



STUDENT STEM PROGRAMS

- **Hersheypark® (page 8):** There's plenty of learning and fun to be had at *Hersheypark*, featuring hands-on educational experiences across many curriculums, from physics and STEM to Business and Marketing.
- **Whitaker Center for Science & The Arts (page 13):** Inside the new STEM Design Studios, kids can experiment with K'Nex designs, 3D printing, and coding and robotics.

AROUND THE REGION >>>

- **Roundtop Mountain Resort (page 17):** It's education disguised as an outdoor adventure when the students are learning about velocity while snow tubing or math on the ropes course.



2019 Badge

SCOUT BADGES

- **Hersheypark® Camping Resort (page 25):** Troops can combine coasters, camping, and s'mores on this sweet scout getaway.
- **Lake Tobias Wildlife Park (page 10):** Be on the lookout around the park on a Scavenger Hunt to earn a Lake Tobias patch.
- **Pennsylvania State Capitol Building:** There's a lot to explore around the Capitol building, including fun facts, fascinating history, and cool stuff for scouts along the way.
- **Whitaker Center for Science & The Arts (page 13):** From STEM lab experiments to documentary films, there's plenty of learning and badge earning to be had.

AROUND THE REGION >>>

- **Gettysburg National Military Park Museum & Visitor Center (page 16):** Scouts can earn multiple badges as they hike the battlefield and tour the museum experiences.
- **Stone Gables Estate (page 17):** Receive a badge for equine education, including how to groom, tack, and even ride a horse.

HOME SCHOOL

- **Hershey Gardens (page 8):** From game and craft learning stations to tree identification and scavenger hunts, let education bloom here.
- **The Hershey Story, The Museum on Chocolate Avenue (page 10):** Explore the museum with a sweet scavenger hunt then participate in a Chocolate Lab class.

AROUND THE REGION >>>

- **The Amish Experience (page 14) and The Amish Farm and House (page 14):** Discover the Amish way of life and stir meaningful discussions about culture and acceptance.
- **Strasburg Rail Road (page 18):** It's full steam ahead on this historic rail line, featuring authentic steam train rides through Amish country.



AACA MUSEUM, INC.

Take a walk down memory lane, decade by decade, all scenes and settings of a cross country journey! Special automobile featured exhibits change several times each year so there is always something new to see. Permanent exhibits include a 1950's Drive-In, a 1940's Valentine Diner and the World's largest collection of Tucker automobiles. There is something for everyone, no matter the age. Groups can enjoy the museum on a self-guided tour, a guided tour with advance reservations or groups can also enjoy lunch, hors d'oeuvres, or dinner at the museum. Call us to find out how we can make the museum work for you!

- **Comp Policy: Group Tour Leader + Bus Driver**



161 Museum Drive
Hershey, PA 17033
717-566-7100 (Main)
717-566-7300 (Fax)
Email: Ticket@AACAMuseum.org
AACAMuseum.org

ADVENTURE SPORTS IN HERSHEY

Celebrating 30 years in 2020!

Family entertainment center features go-karts, miniature golf, batting cages, golf driving range, bumper boats, arcade, and outdoor laser tag. Group packages are available for both professional and recreational needs. Outdoor laser tag is especially attractive for team building fun. Plan a laser tag outing on our three-acre field. Either way, fun, and memories are created. Open year-round. Can you solve the puzzles to find your way out of our new escape room attraction?

Follow us on Facebook, Instagram, and YouTube.



3010 Elizabethtown Road
Hershey, PA 17033
717-533-7479 (Main)
Email: fun@adventurehershey.com
AdventureHershey.com
EscapeHershey.com

ECHO DELL - INDIAN ECHO CAVERNS

Unleash Your Explorer...come and visit to discover and learn! Open all year, Sundays, and most holidays • Fantastic cavern tours by professional guides who will share the geology, history, and magic of the beautiful formations and lakes, all at a constant 52° F • Pan for gemstones and other treasures at our Gem Mill Junction old-fashioned water wheel and sluice. Keep all you find! • Educational Workshops, hands-on learning for all ages • Petting barnyard and fun-filled playground area • Gift shop with authentic Native American wares and so much more. Something for every budget and taste • Conference room available for business events or social gatherings • Picnic in the pavilions or at the picnic tables in the open air • Groups receive 1 free with every 25 paid tickets



368 Middletown Road
Hummelstown, PA 17036
717-566-8131 (Main)
717-566-0875 (Fax)
Email: kn@indianechocaverns.com
IndianEchoCaverns.com

NOTES: _____



15 North Fourth Street
Harrisburg, PA 17101
717-238-4111 (Main)
Email: info@gamuttheatre.org
GamutTheatre.org

GAMUT THEATRE GROUP

Gamut Theatre Group is the combined home of Popcorn Hat Players Children's Theatre and Harrisburg Shakespeare Company. Our mission is to tell classic stories in new, exciting ways. We are devoted to making theatre accessible and engaging for all of Central PA and beyond.

For more information, visit GamutTheatre.org.



550 West Hersheypark Drive
Hershey, PA 17033
717-534-3911 (Main)
Email: Info@HersheyPA.com
GiantCenter.com

GIANT CENTERSM

Giant Center arena is home to the *Hershey Bears*® hockey club, member of the American Hockey League. In addition, it also hosts a sensational lineup of star-studded performances, including concerts, family events, and other special attractions. Many shows offer discounts for groups of 15 or more.



1001 Eisenhower Boulevard
Harrisburg, PA 17111
717-260-5460 (Main)
HarrisburgEscapeRooms.com

HARRISBURG ESCAPE ROOMS AT ABC EAST LANES

Corporate team building and special events. Looking for a fresh take on corporate events? Give your employees a new experience with an escape room challenge at your next corporate event!

- Four escape rooms available
(Two mobile escape rooms that can come to you!)
- Bowling option available
- Hall of Fame Lounge
- Customized to suit your event's schedule
- Packages for every party and budget



NOTES: _____

HARRISBURG FOOD TOURS

Join us on a professionally guided group tour of regional food and beverage establishments. Food and drink samples will be provided and are a great way to get a taste for handcrafted dishes made by local artisans. On this tour, you will explore the region's cuisine, and learn about the history, architecture, and culture.



717-685-6655
HarrisburgFoodTours.com

HARRISBURG MALL

Harrisburg Mall is a fully enclosed, two-level, regional shopping center located conveniently at the intersection of I-83 and Paxton Street and just three miles from Harrisburg's central business district, six miles from Harrisburg International Airport and four miles from the PA Turnpike. With over one-million square feet of space, the Harrisburg Mall offers a food court, an on-site Applebee's, Regal Cinemas movie theater, children's play area, Macy's, Bass Pro Shops, and an ample supply of private or public meeting space as well as parking.



3501 Paxton Street
Harrisburg, PA 17111
717-564-0980 (Main)
717-564-4935 (Fax)
ShopHarrisburgMall.com



HERSHEY BEARS® HOCKEY

The *Hershey Bears* are the AHL's most storied franchise and play regular-season home games at *Giant Center*™ October through April.



550 West Hersheypark Drive
Hershey, PA 17033
717-534-3380 (Main)
717-508-1575 (Fax)
Email: hersheybears@HersheyPA.com
HersheyBears.com



NOTES: _____



170 Hotel Road
Hershey, PA 17033
717-508-5970 (Main)
Email: info@hersheygardens.org
HersheyGardens.org

HERSHEY GARDENS

- The Milton & Catherine Hershey Conservatory features a year-round indoor Butterfly Atrium, with hundreds of tropical and North American butterflies, as well as an Educational & Horticultural Wing, hosting changing horticultural displays.
- The 23-acre botanical garden is filled with magnificent theme gardens, colorful seasonal displays and the historic rose garden that boasts over 3,500 rose bushes.
- The Gardens Shop offers a wide variety of distinctive home and garden items, as well as fun, educational items for the kids.
- Guided tours are available, as well as self-guided tours.



- **Comp Policy: Receive one complimentary ticket for every 20 paid admissions.**



15 East Caracas Avenue
Hershey, PA 17033
717-534-3405 (Main)
Email: Info@HersheyPA.com
HersheyTheatre.com

HERSHEY THEATRESM

This historic theatre has established itself as the area's premier performing arts center, presenting the finest in touring Broadway shows, classical music and dance attractions, and world-renowned entertainers.



100 West Hersheypark Drive
Hershey, PA 17033
1-800-242-4236: Option 1 (Sales Office)
Email: HersheyparkGroups@HersheyPA.com
HersheyparkGroups.com

HERSHEYPARK[®]

Hersheypark delights guests with more than 70 rides and attractions including 15 coasters, live entertainment, and water fun for everyone! *The Boardwalk at Hersheypark*[®] features 16 attractions! Three parks for one low price: *Hersheypark*, *The Boardwalk At Hersheypark*, and *ZooAmerica*[®] North American Wildlife Park.

- New this Summer, experience the all-new region of *Hersheypark*, *Hershey's ChocolateTown*SM, and an all-new coaster, *Candymonium*SM
- Save up to 55% off regular admission
- Exclusive all-you-care-to-eat buffets available for groups of 40 or more starting at \$19
- Free admission to *ZooAmerica* when entered from within *Hersheypark*
- Free bus parking with free bus driver admission
- Access to *Hershey's Chocolate World* Attraction
- Save up to 30% with single use meal deal



- Performance groups/in-park performance opportunities.

NOTES:

HERSHEYPARK® ARENA

Hersheypark® Arena has been the host for a number of significant events through the years, including Wilt Chamberlain's record 100-point game in 1962, the first ever Ice Capades show in 1940, and eight Calder Cup championships for the *Hershey Bears®*.



100 West Hersheypark Drive
Hershey, PA 17033
717-534-3911 (Main)
Email: Info@HersheyPA.com
HersheyEntertainment.com



HERSHEYPARK® STADIUM

The most prominent outdoor stadium between Philadelphia and Pittsburgh, *Hersheypark®* Stadium is used as a location for large events, including an annual Summer Concert Series. With a state-of-the-art synthetic grass system, *Hersheypark* Stadium is an ideal venue for athletic events, holding nearly 16,000 in the stands, and 30,000 fans for concerts.



100 West Hersheypark Drive
Hershey, PA 17033
717-534-3911 (Main)
717-534-8996 (Fax)
Email: Info@HersheyPA.com
HersheyparkStadium.com



HERSHEY'S CHOCOLATE WORLD ATTRACTION

See, smell, touch, do and, of course, taste, all the excitement at HERSHEY'S CHOCOLATE WORLD Attraction in Hershey, PA. See how cocoa beans become world-famous HERSHEY'S CHOCOLATE on our free Hershey's Chocolate Tour including a complimentary sample! Choose your ingredients and design your own wrapper in the Create Your Own Candy Bar factory experience. Unwrap and taste your way through the tale of Hershey's Chocolate in an all new theatrical experience, HERSHEY'S Unwrapped. Through digital animation and special effects, become part of the show as you help the Hershey's Characters solve the factory mystery in the 4D Chocolate Mystery.



101 Chocolate World Way
Hershey, PA 17033
717-520-8981 (Main)
717-520-8859 (Fax)
Email: groupsales@hersheys.com
HersheysChocolateWorld.com

- **Comp Policy: Receive one (1) complimentary ticket for every 20 paid admissions (on attractions only)**



NOTES: _____



63 West Chocolate Avenue
Hershey, PA 17032
717-534-8939 (Main)
717-534-8940 (Fax)
Email: grouptours@HersheyStory.org
HersheyStory.org

HERSHEY STORY, THE MUSEUM ON CHOCOLATE AVENUE

Hershey starts here! Located in Downtown Hershey under the iconic Hershey's Kisses streetlights, The Hershey Story is the place to discover all things Hershey: the man, the town, the chocolate, and the school that bears his name. The Museum Experience will guide visitors on a journey through Milton Hershey's lifetime and beyond. Learn how he went from bankruptcy to brilliance, transforming chocolate from a luxury to an everyday treat. Groups can also take a delicious, hands-on class in the Chocolate Lab, where they'll explore the unique qualities of chocolate and make something to take home. Become immersed in the sweet world that inspired Milton Hershey at Tastings, where groups can taste warm drinking chocolate from around the world.



• **Comp Policy: Receive one complimentary ticket for every 20 paid admissions.**



777 Hollywood Boulevard
Grantville, PA 17028
717-469-2211 (Main)
Email: club.hollywood@pngaming.com
HCPN.com

HOLLYWOOD CASINO AT PENN NATIONAL RACE COURSE

A red carpet experience awaits your group when you visit Central Pennsylvania's premier casino, dining, and entertainment facility open 24/7 and just minutes away from Hershey and Harrisburg. Surround yourself with excitement as you take a seat at the hottest slot machines and table games around. Experience the heart-pounding thrills of live thoroughbred racing. Place your bets at our Sportsbook, or online at HollywoodCasino.com. Indulge in our award-winning restaurants, and dance the weekend away to nationally-acclaimed tribute acts and renowned local bands. At Hollywood Casino, it's all about providing A+ Service to every guest, every time. Come visit and see why there's truly "No Place Like Hollywood!"



GAMBLING PROBLEM? CALL 1-800-GAMBLER FOR HELP.



760 Tobias Road
Halifax, PA 17032
717-362-9126 (Main)
717-362-9993 (Fax)
Email: reservations@laketobias.com
LakeTobias.com

LAKE TOBIAS WILDLIFE PARK

Experience the wild with hundreds of animals from around the world. Guided Safari Tours take you over 150 acres of rolling hills with herds of animals, flightless birds, and giraffes. Encounter the exotic as you stroll around the zoo exhibits where interesting creatures educate and entertain you. The Reptiles & Exotics Facility will thrill you with eye-opening presentations that will enlighten you on these fascinating creatures. You can even touch an alligator if you dare! Visit the Museum & Education Center for the history of the park, hands-on activities for children and a 500-gallon aquarium with stingrays. Picnic tables, concessions, and souvenirs available. Come, join us for a day of wild adventure. Open May through October. Visit our website at LakeTobias.com and check out our Facebook page.



NOTES:

MELTSPA® BY HERSHEY

Located in downtown Hershey, *MeltSpa* by Hershey offers massage, facials, body treatments, manicures, pedicures, and salon services. Experience our exclusive *Hershey's Dark Chocolate Treatments*, or enjoy collections inspired by the season. Our full range of more than 70 spa treatments and salon services are paired with convenient evening hours, seven days a week so you can always fit in time for relaxation.



11 East Chocolate Avenue
Hershey, PA 17033
855-500-2366 (Main)
MeltSpa.com

THE NATIONAL CIVIL WAR MUSEUM

Come face to face with history at The National Civil War Museum! With extraordinary displays, this museum covers the entire American Civil War from beginning to end. We bring history to life with outstanding collections of Union and Confederate artifacts, high definition videos, and life-size mannequins. The self-guided tour includes 17 galleries of inspiring, balanced presentations. A panoramic view of Harrisburg and magnificent Grand Rotunda add to the unique ambiance of this inspirational setting. Exceptional banquet facilities make this the perfect venue for an exclusive private affair. Group rates available for parties of 10+ with advanced reservations. Our Education Department is dedicated to making student field trips an exceptional learning experience.



1 Lincoln Circle, at Reservoir Park
Harrisburg, PA 17103
717-260-1861 (Main)
717-260-9599 (Fax)
Email:
info@nationalcivilwarmuseum.org
NationalCivilWarMuseum.org



PENNSYLVANIA FARM SHOW COMPLEX & EXPO CENTER

The PA Farm Show Complex & Expo Center is a premier destination for hundreds of motor coach and groups looking for unique events. Free, designated coach loading and unloading area. Events with group-friendly rates. Easy access to major interstates. Banquet facilities for groups up to 1200. Group friendly hotels located within 1 mile from the Complex.

Annual Events: PA Farm Show, PA Auto Show, Great American Outdoor Show, Home Builders Show, Keystone International Livestock Show, All American Dairy Show, PA Christmas Craft & Gift Show, PA National Horse Show, Mecum Auto Auction, Horse World Expo.



2300 North Cameron Street
Harrisburg, PA 17110
717-787-5373 (Main)
717-783-8710 (Fax)
Email: farmshow@pa.gov
PAFarmShowComplex.pa.gov/



NOTES: _____



1 Riverside Drive, City Island
Harrisburg, PA 17101
717-234-6500 (Main)
717-234-9902 (Fax)
Email: info@harrisburgriverboat.com
HarrisburgRiverboat.com

PRIDE OF THE SUSQUEHANNA RIVERBOAT

Come ride one of the last remaining paddle-wheel driven riverboats in the country. The Pride offers tourists spectacular views of the river scenery and the beautiful Pennsylvania State Capitol. We offer tours daily throughout the summer, and special events like live music and dinner cruises occur most nights.

- Full bar
- Galley kitchen
- Restrooms
- Climate controlled interior
- Handicap accessible



100 Hotel Road
Hershey, PA 17033
717-533-2171 (Main)
TheHotelHershey.com/shopping

THE SHOPS AT THE HOTEL HERSHEY®

Located inside *The Hotel Hershey*®, these six boutique shops feature an assortment of uniquely Hershey items ranging from Le Vian Chocolate Diamonds to home décor, signature apparel, and delicious pastries. Hershey is truly a shopper's paradise!



100 Hotel Road
Hershey, PA 17033
717-520-5888 (Main)
ChocolateSpa.com

THE SPA AT THE HOTEL HERSHEY®

Escape to *The Spa At The Hotel Hershey*® to indulge in a decadent chocolate package, try a seasonally inspired service, or experience a treatment from one of our signature collections. Choose from a variety of spa treatments including massage, facials, body scrubs and wraps, hydrotherapy, men's spa services, and salon services.



NOTES: _____

WHITAKER CENTER FOR SCIENCE AND THE ARTS

Whitaker Center for Science and the Arts is the mid-state's premier center for arts, education, entertainment, and cultural enrichment. Whitaker Center is composed of three main venues — Harsco Science Center, Select Medical Digital Cinema, and Sunoco Performance Theater. Dive into science with two floors of interactive, hands-on exhibits. Take in a documentary or Hollywood blockbuster on a four-story screen with immersive sound. Experience the intimacy and impact of a live concert, theater, or dance performance. Whitaker Center is attached to the Hilton Harrisburg which provides first-class lodging and dining. Also attached is the Strawberry Square retail, food court, and office complex providing a number of options for groups. Group rates and private events are available! Call our Group Sales Coordinator to plan your group's trip today!



222 Market Street
Harrisburg, PA 17101
717-214-ARTS (2787) (Main)
717-221-8208 (Fax)
Email: info@whitakercenter.org
WhitakerCenter.org

ZOOAMERICA® NORTH AMERICAN WILDLIFE PARK

Visit ZooAmerica®, a year-round, 11-acre, walk through zoo adjacent to Hersheypark® in Hershey, PA. Stroll the tree-lined pathways as you learn about more than 200 animals from five regions of North America. Whether you come to ZooAmerica or ZooAmerica comes to you, we have a wide range of educational opportunities for groups, including on-site programs, guided tours, animal encounters, outreach programs, seasonal activities, and more.



201 Park Avenue
Hershey, PA 17033
717-534-3391 (Main)
717-534-3151 (Fax)
Email: ZooAmerica@HersheyPA.com
ZooAmerica.com

AMERICAN MUSIC THEATRE

There's something on stage for everyone at American Music Theatre - Central PA's live entertainment destination! Since opening in 1997, AMT has welcomed Grammy winners, CMA winners, Tony winners, Broadway tours, Opry legends, and even Oscar winners to their stage. They've produced acclaimed original shows and spectacular Christmas productions. With a group minimum of only 15, it's easy to take advantage of their group ticketing policies. Your group will enjoy a welcoming and comfortable experience - from AMT's greeters who welcome your group to the theatre in their bus-friendly parking lot to spacious and comfortable theatre seats. AMT is conveniently located on Route 30, with easy access to all the area has to offer. Plan a day, a weekend, or a whole vacation!



2425 Lincoln Highway East
Lancaster, PA 17602
717-397-7700 (Main) • 800-648-4102
717-397-7850 (Fax)
Email: sales@AMTshows.com
AMTshows.com

NOTES: _____



3121 Old Philadelphia Pike, PO Box 414
Bird-in-Hand, PA 17505
717-768-8400 x214 (Main) • 800-555-2303
717-768-7864 (Fax)
Email: Lois@AmishExperience.com
AmishExperience.com

THE AMISH EXPERIENCE

In the heart of Lancaster's Amish Country, between Bird-in-Hand and Intercourse, you'll find the Amish Experience. Tour Lancaster's only Heritage 9-room Amish Homestead and School, witness a young Amish boy's struggle to choose the Amish church or leave his family behind with "Jacob's Choice", and enjoy the beauty of a Farmlands Tour with a certified step-on guide. Experience entertainment from the 1800s with a Magic Lantern Show. VIP Tour, Farming of the Future, What Price Freedom, One Room to Rumspringa are a few of the unique additional tours offered for group and school excursions. Meals, lodging, Sight & Sound Theater, and Magic and Wonder Theater are also available.



40 MINUTE HOMESTEAD TOURS, 35 MINUTES JACOB CHOICE AND 90 MINUTE FARMLANDS TOURS



2395 Covered Bridge Drive
Lancaster, PA 17602
717-394-6185 (Main)
717-394-4857 (Fax)
Email: info@amishfarmandhouse.com
AmishFarmAndHouse.com

THE AMISH FARM AND HOUSE

Let us make your group's trip to Amish Country truly memorable. Immerse yourself in a world without technology as you learn about the simple lifestyle of the Amish. Have fun on our farm while feeding our goats and sheep and riding Amish scooters. Learn what it is like to be an Amish student in a schoolhouse presentation. Meet our Amish quilter and Amish schoolteacher. Get a real taste of Amish Country. New this year is our Amish Barbeque Barn. Enjoy homemade grilled chicken lunches, soft pretzels, and ice cream at a picnic pavilion. Tour and meal combinations are available with Good N' Plenty restaurant. Visit the real and remote backroads of Lancaster County during a guided step-on tour. Tours can be given in French, Spanish, German, and Mandarin. Open daily, year-round.



40 MINUTE HOUSE TOUR
1, 2 OR 3 HOUR COUNTRYSIDE
BUS TOUR



2760 Old Philadelphia Pike
Bird-in-Hand, PA 17505
(800) 790-4069 (Main) • 800-627-1910
Email: GroupSales@Bird-in-Hand.com
Bird-in-Hand.com

BIRD-IN-HAND STAGE

Sit back and enjoy the show: One of Lancaster County's must-sees for uplifting, live entertainment. We welcome your group to the Bird-in-Hand Stage, where you can enjoy Broadway-style musicals and more set in Amish Country. Located on the banquet level of the Bird-in-Hand Family Restaurant & Smorgasbord, our stage features tiered seating for up to 160, and accessible floor seating is available. The stage offers its own ground-level entrance and is accessible by elevator from the main dining room upstairs.

One stop for meals, entertainment and lodging: It's easier to entertain a group when everything is in one location. We can accommodate your party, whether friends or family, a bus group, or your club or organization. Discounts available for groups of 20 or more.



NOTES:

CARLISLE SPORTS EMPORIUM

Carlisle Sports Emporium, The Place to Play, is Central PA's year-round indoor and outdoor entertainment complex, with fun for all ages! Entertainment options include: 100+ virtual and interactive arcade games, HOLOGATE VR, indoor and outdoor go-karts, new LED LASERTRON laser tag, featuring a 7,500 sq. ft. two-tier arena, two 18-hole Castle and Western themed miniature golf courses, batting cages and roller-skating. Meeting spaces are available on site, including The Barn at Creek's Bend. Parties, events, and corporate team building are our specialty! Located just off Interstate-81 and the Pennsylvania Turnpike (I-76), only minutes from Harrisburg, Hershey, York, Gettysburg, Reading, and Lancaster.



29 South Middlesex Road
Carlisle, PA 17015
717-258-4741 (Main)
Email: sales@carlisesportsemporium.com
CarlisleSportsEmporium.com



CENTRAL PENNSYLVANIA YOUTH BALLET

Central Pennsylvania Youth Ballet provides world renowned training to students from across the United States and around the world. CPYB is a school offering nationally recognized training in and performance of classical ballet to students at all levels from beginner to pre-professional.

CPYB is the resident ballet company for the Whitaker Center in Harrisburg, which includes performances of George Balanchine's The Nutcracker® each holiday season at both the Whitaker Center and at Hershey Theatre in Hershey, PA.

Discounts are available for groups of 10 or more. Contact Peggy Schryver at schryver@CPYB.org or 717-601-2981.



5 North Orange Street, Suite 3
Carlisle, PA 17013
717-601-2981
Email: schryver@CPYB.org
CPYB.org



FULTON THEATRE

Central Pennsylvania's premier regional theatre, producing Broadway caliber musicals, comedies, and dramas, employing professionals from New York, the local community, and nationwide, experienced within a beautifully restored 165-year-old national historic landmark of ornate Victorian architecture, walking distance from historic Lancaster's attractions, one block from Lancaster County Convention Center.



12 North Prince Street
Lancaster, PA 17603
717-394-7133 (Main) • 888-480-1265
717-397-3780 (Fax)
Email: groups@thefulton.org
TheFulton.org



NOTES: _____



1195 Baltimore Pike
Gettysburg, PA 17325
877-874-2478 (Main)
717-334-2436
Email:
reservations@gettysburgfoundation.org
GettysburgFoundation.org

GETTYSBURG NATIONAL MILITARY PARK MUSEUM & VISITOR CENTER

The official start to your group's Gettysburg visit. Explore Gettysburg with your group. See the Film: Set the scene with "A New Birth of Freedom." Experience the Cyclorama: Feel the fury of Pickett's Charge in the 360-degree light and sound show. Explore the Museum: Journey through the events and issues surrounding the Civil War and the Battle of Gettysburg. Tour the Battlefield: Visit the legendary landmarks with your Licensed Battlefield Guide. Groups of 16 or more receive special opportunities: Group discounts; group breakfasts, dinners and boxed meals; dedicated group entrance; bus parking; and special group programs. Call to customize your group's visit.



3529 Old Philadelphia Pike
Intercoourse, PA 17534
717-768-8261 (Main) • 800-732-3538
Email: groups@kitchenkettle.com
KitchenKettle.com

KITCHEN KETTLE VILLAGE

Start your adventure in the Hershey Harrisburg Region at Kitchen Kettle Village in nearby Lancaster. Bring the best of Pennsylvania Dutch Country to your group with more than 40 specialty shops and plenty of hands-on activities. Be sure to leave time to grab a quick lunch, too!

Feast on local foods with lunch-on-your own, or try one of our group-only meals. Or, watch our local farm women "put up" more than 90 varieties of jams and relishes in the area's original canning kitchen. Don't forget the free samples!

Tour the picturesque countryside in a horse-drawn carriage. Don't miss our groups-only and students-only experiences. Free admission, free bus parking, plus guide and driver perks. Open year-round, 9 AM - 5 PM. Reservations encouraged, but not required.



19th & Oak Streets
2001 Walnut St.
Ashland, PA 17921
570-875-3850 (Main) • 570-875-3301 (Fax)
Email: info@pioneertunnel.com
PioneerTunnel.com

PIONEER TUNNEL COAL MINE

Tour a real anthracite coal mine and take a scenic ride on an old-fashioned steam locomotive. Both tours are guided. There are behind the scenes tours as well, advanced reservation required. Open April 1 through Oct. 31.



NOTES: _____

ROUNDTOP MOUNTAIN RESORT

Is your group tour looking for out-of-the-ordinary? Offer them a challenge on our zip lines, paintball fields, huge maze, or in our OGO ball (one of only three that exist in the U.S.). We provide indoor/outdoor space for groups of 10-700 with catering options from picnics to formal events. Year-round professionally facilitated team-building for sports teams, students, and corporate groups with positive guaranteed results at the ropes course, and themed paintball fields for friendly challenges. Memorial Day-Labor Day: zipline canopy tour and outdoor adventure park including bumper boats, giant maze, climbing features, zip lines, and more in one convenient package. Winter: Skiing, snowboarding, and tubing. 100% snowmaking means we always have plenty of snow.



925 Roundtop Road
Lewisberry, PA 17339
717-432-9631 (Main)
717-432-2949 (Fax)
Email: skiroundtop@skiroundtop.com
RoundtopMountainResort.com

SEMINARY RIDGE MUSEUM, GETTYSBURG

Start your Gettysburg journey at the heart of the first day's fighting. Seminary Ridge Museum is located along the National Park Service's auto tour route. Three floors of exhibits connect individuals and groups to the dilemmas which led to the Civil War, provide a powerful and personal view of the battle's first day, and show the work of one of the battlefield's largest field hospitals.



111 Seminary Ridge
Gettysburg, PA 17325
717-339-1300 (Main)
Email: info@seminaryridge.org
SeminaryRidgeMuseum.org

STONE GABLES ESTATE: HOME OF IRONSTONE RANCH AND THE STAR BARN VILLAGE

Stone Gables Estate sits on 275 pristine acres and is home to the historic Ironstone Ranch, The Star Barn Village, St. Michael's Vineyard, the Harrisburg, Lincoln, & Lancaster Railroad, and the Herr's Mill Covered Bridge. Visit StoneGablesEstate.com to book your next celebration, group tour, train ride or horseback riding experience!

Stone Gables Estate is a biblical faith-based ministry/business. Our mission is to donate 100% of net profits to aid abandoned children worldwide through Brittany's Hope, "Events with a Purpose."



1 Hollinger Lane
Elizabethtown, PA 17022
717-902-9791
Email: info@stonegablesestate.com
StoneGablesEstate.com

NOTES: _____



301 Gap Road
 Ronks, PA 17572-9566
 717-687-6193 (Main) • 866-725-9666
 717-687-6194 (Fax)
 Email: groups@strasburgrailroad.com
StrasburgRailroad.com

STRASBURG RAIL ROAD

Give your school or motorcoach group the chance to view scenic Lancaster County from aboard America's oldest operating railroad! Hop on a pre-selected train accommodation of your choice for a narrated tour of our historic railroad and the surrounding countryside. Learn about the history of our "short line" and the cultural roots of Amish Country as you enjoy an authentic steam railroad experience aboard our meticulously-restored passenger cars. Our group accommodations include free motorcoach and automobile parking with easy access; choice of Coach, Open Air, Dining, or First Class cars; several meal options for on or off the train; two picnic groves with abundant seating; and a historic and attractive station mall with gift shops and a café.



45-minute train ride.
 1-hour shop tour.



301 Linden Street
 Columbia, PA 17512
 844-847-4884 (Main)
 717-684-5197 (Fax)
 Email: groupsales@turkeyhill.com
TurkeyHillExperience.com

TURKEY HILL EXPERIENCE

Minutes from the Hershey area, Turkey Hill Experience features interactive exhibits about dairy culture, the story of Turkey Hill Dairy, and how ice cream and iced tea flavors are created. Experience what it's like to be a Turkey Hill Dairy ice cream maker for a day. Sit in our vintage milk truck, milk our mechanical cows, star in your own Turkey Hill commercial and enjoy unlimited free samples of select iced tea and ice cream products! In addition, we offer the Turkey Hill Taste Lab, where you can actually taste the virtual flavor you created during your experience and our Tea Discovery Class, where you learn from one of our tea experts about tea origins, aromas, and varieties. Taste Lab & Tea Discovery have limited seating, reservations are required, and a nominal additional fee applies. The Experience offers group pricing for 20 or more. Offering flexible hours, we will gladly open early or stay late as needed, with advanced notice.



60-150
 MIN



950 Soldiers Drive
 Carlisle, PA 17013
 717-245-3972 (Main)
 717-245-3067 (Fax)
 Email:
usarmy.carlisle.awc.mbx.ahec-ves@mail.mil
USAHEC.org

U.S. ARMY HERITAGE & EDUCATION CENTER

The USAHEC is the premier research and archival facility for U.S. Army history and is dedicated to "Telling the Army Story ... one Soldier at a Time." The expansive campus includes the Visitor and Education Center, the U.S. Army War College Library, the U.S. Army Military History Institute, and the Army Heritage Trail. The Visitor and Education Center features the Soldier Experience Interactive Gallery, changing exhibits, and museum store. Ridgway Hall features the library and archives, an art gallery with exhibitions rotating annually, and additional changing exhibit spaces. The mile-long, outdoor Army Heritage Trail provides an immersive experience, allowing visitors to walk into different periods of history represented.



NOTES:

BEST WESTERN HARRISBURG NORTH HOTEL

The Best Western Harrisburg North Hotel provides warm and inviting accommodations close to *Hersheypark*®. The Pennsylvania Farm Show Complex & Expo Center is five minutes from this Harrisburg hotel. We are minutes from popular attractions including:

National Civil War Museum, Gettysburg Battlefield, Hollywood Casino at Penn National Race Course, Lancaster's Amish Country

• Guest Rooms: 107 — King 36, Double Queen 54, Suite 17

• **Comp Policy: Varies on group**



150 Nationwide Drive
Harrisburg, PA 17110
717-545-9089 (Main) • 717-545-7926 (Fax)
Email: bwn17110@gmail.com
BestWestern.com/en_US/book/hotels-in-harrisburg/best-western-harrisburg-north-hotel/propertyCode.39141.html

BEST WESTERN PLUS HARRISBURG EAST INN & SUITES

Here at the Best Western Plus Harrisburg East Inn and Suites we take great pride in providing excellent, individualized service, to every guest, every time. Conveniently located off Interstate 283, and the Pennsylvania turnpike at exit 247. Centrally located to Downtown Harrisburg and *Hersheypark*®, placing you near great restaurants and top attractions.

- Guest Rooms: 84
- Hot Complimentary Buffet Breakfast
- Free Wi-Fi
- Hot Tub Spa



1344 Eisenhower Boulevard
Harrisburg, PA 17111
717-985-1600 (Main)
717-985-1208 (Fax)
Email: Bwguestrelations39134@gmail.com
BestWestern.com/en_US/book/hotel-rooms.39134.html

BEST WESTERN PREMIER THE CENTRAL HOTEL HARRISBURG/HERSHEY

The Central Hotel features over 18,000 square feet of flexible convention space, perfect for business meetings and social events alike! We feature 174 guest rooms, including several two-bedroom family suites. All of our spacious rooms feature large flat-screen TVs, microwaves, coffee makers, and refrigerators. Our guests enjoy the use of one of the area's largest indoor swimming pools, a game room, and fitness centers, as well as an on-site guest laundry facility. O'Reilly's Tap Room & Kitchen, our on-site restaurant offers Irish themed dishes, American classics, daily specials, and a large outdoor patio area. The Central Hotel, exceeding your expectations, not your budget.

- Guest Rooms: 174
- Driver/Tour Guide



800 East Park Drive
Harrisburg, PA 17111
717-561-2800 (Main) • 717-564-2347 (Fax)
Email:
Kirsha.damone@thecentralhotelharrisburg.com
TheCentralHotelHarrisburg.com

NOTES: _____



504 North Mountain Road
Harrisburg, PA 17112
717-652-7800 (Main)
717-652-1800 (Fax)
Email: Deborah.Catalano@dellisart.com
CandlewoodSuites.com/harrisburgpa

CANDLEWOOD SUITES HARRISBURG

The Candlewood Suites® Harrisburg hotel offers the utmost in comfort and exceptional service for your tour group, business trip, or Pennsylvania vacation. Each suite offers free Wi-Fi, and a spacious work area so you can have a productive stay. As a guest, you'll enjoy a 24-hour fitness center, indoor pool, complimentary guest laundry facilities, and a DVD/CD and book lending library. If you need a quick bite to eat or forgot something, the Candlewood Cupboard features value-priced frozen meals, snacks, drinks, and sundries. If you feel like staying in, each suite is equipped with a full kitchen.

- Guest Rooms: 93



1589 West Harrisburg Pike
Middletown, PA 17057
717-857-8776 (Main)
Email: justinb@prestigehg.com
ChoiceHotels.com/pa786

COMFORT INN & SUITES HARRISBURG AIRPORT - HERSHEY SOUTH

Our comfortable suite-life style is great for any style or size of group. We have 87 guest rooms including six family two queen suites and 45 traditional two queen rooms. Quaint meeting and banquet space on site. Our Middletown location is perfect for air and train travel, convenient to Penn State Harrisburg campus and eight miles from Hershey. Complimentary bus parking and discounted driver and escort rates available.

- Guest Rooms: 87



1200 Mae Street
Hummelstown, PA 17036
717-566-2050 (Main)
717-566-8656 (Fax)
Email: Debbie.Toomey@dhotelgroup.com
ChoiceHotels.com

COMFORT INN AT THE PARK - HERSHEY

We are very accustomed to handling large student groups or sports team groups. We are focused on a family, kid-friendly atmosphere. The Comfort Inn at the Park is only two miles from Hersheypark® and about 45 minutes from the Gettysburg and Lancaster areas.

- Guest Rooms: 125

Choicehotels.com: search for hotel code PA107



NOTES: _____

COMFORT SUITES HUMMELSTOWN-HERSHEY

At our Comfort Suites® hotel, you'll find everything you need to create your perfect stay. Our large contemporary suites have plenty of space for you to spread out and prepare for the next day. Each suite features microwaves, refrigerators, coffee makers, hair dryers, work desks, flat-screen TVs, pillow-top mattresses, irons with ironing boards, and sofa sleepers. Keep your electronic devices charged with the recharge device including AC and USB outlets provided in all guest rooms. Free full hot breakfast served daily from 6:30 AM to 9:30 AM.

- Guest Rooms: 80



320 Milroy Road
Hummelstown, PA 17036
717-566-3000 (Main)
717-566-3700 (Fax)
Email: michele@padutchhotels.com
CSHershey.com

COUNTRY INN & SUITES AT UNION DEPOSIT ROAD

The Country Inn & Suites is located just 15 minutes from Hershey and offers a heated indoor swimming pool and spa, fitness center, wireless/wired internet access, and deluxe continental breakfast. Each room has a mini-fridge, microwave, hair dryer, iron with ironing board, and 40" HD flat-screen TV with cable and HBO.

- Guest Rooms: 78



1025 Peiffers Lane
Harrisburg, PA 17109
717-558-9200 (Main)
717-558-9493 (Fax)
Email: Katelyn.Burger@dellisart.com
CountryInns.com/harrisburgpa_udrd

COURTYARD BY MARRIOTT HERSEY CHOCOLATE AVENUE

Our 120 guest rooms offer lavishly comfortable space to rest and work, with a state-of-the-art, in-room guest entertainment package, which includes 40 HD channels, an interactive channel guide, and internet TV equipped with Netflix, YouTube, Hulu, Crackle, and Pandora. Stop by our Bistro for breakfast, dinner, or after-dinner drinks. Our courtyard patio with an outdoor fireplace offers a delightful way to experience the great vibes of our modern, brand new property.

- Guest Rooms: 120



515 East Chocolate Avenue
Hershey, PA 17033
717-533-1750 (Main)
Email: sbarscheski@shanercorp.com
Marriott.com/harca

NOTES: _____



23 South Second Street
Harrisburg, PA 17101
717-920-1796 (Sales Office)
717-234-6797 (Fax)
Email: DOS@cpharrisburg.com
IHG.com/crowneplaza/hotels/us/en/
harrisburg/mdtdt/hoteldetail

CROWNE PLAZA HARRISBURG/HERSHEY HOTEL

The newly renovated Crowne Plaza Harrisburg is located in the heart of downtown and walking distance to Restaurant Row. We are minutes from the PA State Capitol Complex. The hotel is easily accessible from Interstates 81 and 83 as well as the Pennsylvania Turnpike (I-76). The hotel is an ideal venue for group tours. Crowne Plaza – The Place to Meet!

- Guest Rooms: 260
- Wi-Fi
- Shuttle service to and from Amtrak® and Harrisburg International Airport (based on availability) fees may apply.



350 West Chocolate Avenue
Hershey, PA 17033
717-534-2162 (Main)
717-533-6409 (Fax)
Email:
salesdirectordaysinnhershey@gmail.com
DaysInnHershey.com

DAYS INN BY WYNDHAM HERSHEY

The award-winning Days Inn by Wyndham Hershey is conveniently located in Downtown Hershey – the closest property to Hershey's great attractions with a beautiful terrace overlooking Chocolate Avenue. We offer comfortable, non-smoking accommodations with one king or two queen beds, in-room safe, refrigerator, and microwave. Rates include a deluxe continental breakfast, featuring make-your-own waffles, a variety of hot and cold cereals, yogurt, fresh whole fruit, breakfast breads, two hot items, fruit juices, and 24-hour coffee, tea, and hot chocolate. Tour groups of 15+ rooms receive a comp room for the tour leader or escort, as well as a discounted rate for the driver. Complimentary bus parking, as well as optional luggage handling, is available.



- Guest Rooms: 101



4 Terminal Drive
Middletown, PA 17057
717-944-1361 (Main)
Email: HIAFairfieldSales@shanercorp.com
Marriott.com/harfm

FAIRFIELD INN & SUITES BY MARRIOTT HARRISBURG INTERNATIONAL AIRPORT

Explore what the Harrisburg area has to offer from the new Fairfield Inn & Suites Harrisburg International Airport. Opened in the summer of 2018, our new state-of-the-art hotel is close to all the Harrisburg and Hershey attractions! Our spacious hotel rooms feature free Wi-Fi, plush bedding, and a guest room entertainment package which includes 40 HD channels, an interactive channel guide, and internet TV. Other amenities include a 24-hour business center, fitness center and a courtyard with a fire pit. Enjoy a complimentary hot breakfast buffet or end the day in our lobby bar with a drink and a bite to eat. We look forward to making you feel welcome here!



- Guest Rooms: 123

NOTES:

FAIRFIELD INN & SUITES BY MARRIOTT HERSHEY CHOCOLATE AVENUE

The Fairfield Inn & Suites Hershey Chocolate Avenue is in the heart of everything Hershey! Located just moments from major area attractions, including *Hersheypark*®, *Hershey's Chocolate World*, and *Giant Center*™. We provide you with just what you need and skip what you don't, so travel is easy and productive. Take advantage of our complimentary amenities including microwaves and refrigerators in every room, a delicious hot breakfast each morning, an indoor heated pool, and an on-site fitness facility. At the Fairfield Inn & Suites Hershey Chocolate Avenue, you're our #1 priority. We promise you'll be satisfied, or we'll make it right.

- Guest Rooms: 108
- **Comp Policy: Based on size and date of arrival.**



651 West Areba Avenue
Hershey, PA 17033
717-520-5240 (Main) • 800-228-2800
717-520-5241 (Fax)
Email: jparker@gospringwood.com
Marriott.com/HARHS

FAIRFIELD INN & SUITES-HARRISBURG/HERSHEY

The Fairfield Inn & Suites Harrisburg/Hershey is conveniently situated between Hershey and Harrisburg. Hershey is only eight miles away and minutes from Downtown Harrisburg. After a long day of travel or touring the region, enjoy the comforts of home with flat-panel 32" LCD TV and always free high-speed Internet access. You can rest in our whirlpool, indoor heated pool, or work out in our fitness center. Enjoy complimentary hot breakfast. Tour planners can receive Marriott reward event points. Our friendly staff looks forward to accommodating you! Please call the sales office for rental rates and availability.

- Guest Rooms: 94
- **Comp Policy: 1 per 15. Driver**



1018 Briarsdale Road
Harrisburg, PA 17109
717-412-4326 (Main)
717-564-6169 (sales) • 717-564-6260 (Fax)
Email: Jazmin.C.Gonzalez@marriott.com
Marriott.com/harff

HAMPTON INN & SUITES BY HILTON HERSHEY NEAR THE PARK

The Hampton Inn & Suites by Hilton Hershey Near the Park features bright, spacious rooms and suites, well-lit work areas, flat-screen TVs, high-speed wireless internet, and more! Each morning guests and travelers will be able to enjoy a complimentary hot breakfast buffet or end their day with a work out in our on-site fitness room or unwind in our indoor heated swimming pool. Guests can also take advantage of the numerous point redemption options from our Hilton Honors program!

- Guest Rooms: 86
- **Comp Policy: Based on size and date of arrival**



195 Hershey Road
Hummelstown, PA 17036
717-566-3369 (Main) • 800-426-7866
717-566-3374 (Fax)
Email: amanda.w@canonhm.com
HersheyNearTheParkSuites.HamptonInn.com

NOTES: _____



30 Capital Drive
Harrisburg, PA 17110
717-540-0900 (Main)
717-540-0930 (Fax)
Email: sguyton@titanhotelgroup.com
HarrisburgNorthSuites.HamptonInn.com

HAMPTON INN AND SUITES HARRISBURG NORTH

Welcome to the Hampton Inn and Suites Harrisburg North. Our hotel is located right off Interstate 81 providing easy access to the Pennsylvania State Capitol, *Hersheypark*® attractions, Pennsylvania Farm Show Complex, Lancaster's Amish Country, and Gettysburg Battlefields. Enjoy the comforts of home, exceptional service, and attention to detail when staying with us. Relax in our indoor pool, workout in our extensive fitness center, check emails in our business center, or grab a snack in our Suite Shop. Complimentary local newspaper, Wi-Fi, local calls, plenty of parking and a full breakfast buffet are part of the benefits of staying with us. Don't forget that we are part of the Hilton Honors Program, too.

- Guest Rooms: 106



- **Comp Policy: Based on size of group and date of arrival**



4230 Union Deposit Road
Harrisburg, PA 17111
717-545-9595 (Main)
Email: Amy.anderson3@hilton.com
HarrisburgEast.HamptonInn.com

HAMPTON INN BY HILTON HARRISBURG/HERSHEY EAST

Refined and refreshed guest room renovation and new meeting space completed in 2020. All guest rooms and baths will feature new contemporary carpet and draping, stylish wall coverings, improved lighting, glass shower, granite countertops, and cozier furniture. Please contact the hotel directly to discuss the new meeting space. As you experience the friendly and efficient staff, enjoy our complimentary Wi-Fi, parking, hot breakfast buffet, and fitness center. The hotel is across the street from numerous restaurants and shopping. Discover a hotel that is convenient to everything in Harrisburg and Hershey. Don't forget that Lancaster and Gettysburg are just a short drive away. Located right off exit I-83, near I-81 and PA Turnpike (I-76).

- Guest Rooms: 143
- **Comp Policy: Negotiated per tour or event**



325 University Drive
Hershey, PA 17033
1-866-726-3387 (Sales Office)
Email: Meetings@HersheyPA.com
HersheyMeetings.com

HERSHEY LODGESM

One of Pennsylvania's Largest Convention Resorts, *Hershey Lodge* is a warm and welcoming state-of-the-art meetings venue with unsurpassed convention services and more than 100,000 sq. ft. of flexible meeting space. At *Hershey Lodge*, everything is designed to make your meeting easy, exciting, and extremely successful. We also invite you and your group to explore Hershey and the wonderful variety of venues and activities we offer to tour groups of all interests and sizes.

- Guest Rooms: 665



NOTES: _____

HERSHEYPARK® CAMPING RESORT

Experience year-round camping on 55 acres with more than 300 open and shaded sites, or rent one of our 50 log and deluxe cabins. Amenities include two swimming pools and a wading pool for kids, family fun center, seasonal activities, two playgrounds, self-service laundry, and country store. The Resort provides free Wi-Fi services.



1200 Sweet Street
Hummelstown, PA 17036
888-442-9980
Email:
HersheyparkCampingResort@HersheyPA.com
HersheyparkCampingResort.com



HILTON GARDEN INN HARRISBURG EAST

The Hilton Garden Inn Harrisburg East is centrally located to Hershey and Harrisburg attractions. All our rooms are equipped with 42" flat-screen TVs, Keurig coffee makers, microwaves, and mini-fridges. We are the ideal place for just a night away or multiple nights to visit the many area attractions in Hershey and Harrisburg. Please contact our Sales Department for assistance in planning your stay.

- Guest Rooms: 126



3943 TecPort Drive
Harrisburg, PA 17111
717-635-7299 (Main)
717-635-7298 (Fax)
Email: mdtha-salesadm@hilton.com
HarrisburgEast.HGI.com



HILTON GARDEN INN HERSHEY

The perfect place for group tours, the Hilton Garden Inn Hershey offers full-service dining and bar, made-to-order breakfast at a discounted group rate, on-site meeting space for group gatherings, and Hilton Honors points for booking. Just minutes from all Hersheypark® attractions but nestled in the quiet area of Hummelstown. With 112 well-appointed guest rooms with multiple sleeping arrangements, you are sure to find the perfect fit for your group here with us.

- Guest Rooms: 112



550 East Main Street
Hummelstown, PA 17036
717-566-9292 (Main) • 877-782-9444
717-566-9934 (Fax)
Email: mdthe-salesadm@hilton.com
Hershey.HGI.com



NOTES: _____



1 North Second Street
Harrisburg, PA 17101
717-233-6000 (Main)
717-233-6830 (Fax)
Email: MDTHH-SALESADM@hilton.com
Harrisburg.Hilton.com

HILTON HARRISBURG

Located in Downtown Harrisburg, the Hilton is just two blocks from the PA State Capitol and 15 minutes from Hershey attractions. Expansive meeting and event space, intimate dining rooms, and luxurious overnight accommodations with panoramic views of the river and skyline set the stage for a memorable experience. Additionally, two contemporary restaurant options offer something for everyone. Ad Lib Craft Kitchen & Bar with small plates and wood stone oven favorites and a 16 ft. fireplace is a great spot for a casual get together. 1700 Steakhouse provides a fine dining experience with Midwest beef, sustainable seafood, and a Wine Spectator Award-winning wine list.

- Guest Rooms: 341
- **Comp Policy: 1 room per 50 rooms**



4021 Union Deposit Road
Harrisburg, PA 17109
717-561-8100 (Main)
717-561-1357 (Fax)
Email: dwilson@twintierhospitality.com
HIEExpress.com/harrisburgeast

HOLIDAY INN EXPRESS HARRISBURG EAST - HERSHEY AREA

Enjoy newly renovated guest rooms at Holiday Inn Express located less than ten miles from the PA Farm Show Complex, *Hersheypark*®, PA State Capitol, Downtown Harrisburg, and Commonwealth offices. Complimentary amenities include a hot breakfast buffet, 24/7 coffee located in the lobby, Wi-Fi, parking, fitness center, business center, in-room refrigerator and microwave, guest laundry, seasonal outdoor pool, and in-room safe. Friendly and knowledgeable guest service agents make groups immediately feel welcome!

- Guest Rooms: 114



7744 Linglestown Road
Interstate 81, Exit 77
Harrisburg, PA 17112
717-540-8400 (Main)
717-540-5553 (Fax)
Email: Charrison@padutchhotels.com
HarrisburgHolidayInn.com

HOLIDAY INN EXPRESS HARRISBURG NE-HERSHEY

Stay Inspired! Honored in 2013 by Intercontinental Hotels Group with the Renovation of the Year Award, our beautiful hotel offers comfortable guest rooms with spacious work areas, microwaves, refrigerators, iron/ironing boards, hair dryers, and complimentary internet access. Amenities include an expanded business center, complimentary breakfast with rotating hot items, 24-hour fitness center, indoor pool, and hot tub. Our convenient location just off exit 77 of I-81 provides easy access to the entire Hershey Harrisburg Region

- Guest Rooms: 80
- **Comp Policy: 50% off group rate. Driver/Tour Guide**



NOTES:

HOLIDAY INN HARRISBURG EAST

Looking for hotels near Hershey or Harrisburg, PA? The smoke-free Holiday Inn® Harrisburg East offers a location that is just minutes from the attractions of Hershey, Downtown Harrisburg, and Amish Country. The PA Farm Show Complex & Expo Center, The National Civil War Museum, *Giant Center*™, and *Hersheypark*® Stadium are all nearby. Don't miss terrific golf courses, antique cars, and new Hershey museums. Enjoy athletic games with the *Hershey Bears*® and Harrisburg Senators. In addition to a state-of-the-art board room and high-functioning hospitality room, we have a 2,200-sq. ft. ballroom available for pre-function space and numerous amenities: free high-speed Wi-Fi access, full-service restaurant and lounge, indoor pool, and fitness area.

- Guest Rooms: 175



815 South Eisenhower Boulevard
Middletown, PA 17057
717-939-1600 (Main) • 800-719-5540
717-939-2069 (Fax)
Email: Lindsay.Peters@dhotelgroup.com
HolidayInn.com/harrisburge

HOLIDAY INN HARRISBURG-HERSHEY

The Holiday Inn Harrisburg/Hershey hotel is a full-service property providing guest rooms and accommodations in Central Pennsylvania. Grantville, PA, conveniently located off Interstate 81, is just minutes from both Hershey and Harrisburg, and all their attractions like *Hersheypark*®, Hollywood Casino at Penn National Race Course, Fort Indiantown Gap, AACA Museum, The National Civil War Museum, and the PA State Capitol. We are also within a one-hour drive to both Lancaster and Gettysburg. Our facility with an indoor pool, Jacuzzi, fitness room, and an outdoor pool provides entertainment for everyone. Enjoy casual dining in our two restaurants: The Great American Grille and the Winner's Circle Saloon.

- Guest Rooms: 200



604 Station Road
Grantville, PA 17028
717-469-0661 (Main)
717-469-7755 (Fax)
Email: kathytaylor@stayholiday.com
StayHoliday.com

HOME2 SUITES BY HILTON HARRISBURG NORTH

New Hilton hotel with a great location by the Shoppes at Susquehanna. Perfect suites for a one-night stay or an extended stay in the Harrisburg/Hershey area. Convenient to shopping and restaurants for any evening plans. Next to Cracker Barrel at Exit 69 off of I-81 at Progress Avenue. Scenic location on top of the hill with a beautiful view of the Blue Ridge mountains.



2450 Brindle Drive
Harrisburg, PA 17110
717-545-5300 (Main)
717-545-5301 (Fax)
Email: mleonard@gospringwood.com
Home2Harrisburg.home2suitesbyhilton.com

NOTES: _____



100 Hotel Road
Hershey, PA 17033
1-866-726-3387 (Sales Office)
Email: Meetings@HersheyPA.com
HersheyMeetings.com

THE HOTEL HERSHEY®

Breathtaking elegance and uncompromising guest service make *The Hotel Hershey* the perfect venue for re-focusing the creative energies that lead to successful meetings. *The Hotel Hershey* offers a timeless setting with more than 25,000 sq. ft. of meeting space, 276 deluxe guest rooms including 10-, four- and six-bedroom cottages, modern amenities, natural lighting in all function space, and uncompromising service. Enjoy access to three distinctive golf resort courses and *The Spa At The Hotel Hershey®* featuring traditional and signature treatments.

- Guest Rooms: 276



765 Eisenhower Boulevard
Harrisburg, PA 17111
717-558-7676 (Main)
717-558-7677 (Fax)
Email: indigodos@areyamanagement.com
HotelIndigo.com/Harrisburgpa

HOTEL INDIGO HARRISBURG-HERSHEY

Come experience this brand new one-of-a-kind boutique hotel with the amenities your group will need from our full-service restaurant and lounge to our swimming pool oasis.

- Guest Rooms: 149 - including 20 Suites



990 Eisenhower Boulevard
Harrisburg, PA 17111
717-939-8000 (Main)
717-939-0500 (Fax)
Email: lq1032gm@laquinta.com
LaQuintaHersheyHarrisburgAirport.com

LA QUINTA INN & SUITES HARRISBURG AIRPORT HERSHEY

Our hotel is located less than 10 minutes from Harrisburg International Airport. All 110 rooms are completely nonsmoking. Free breakfast includes egg and sausage patties. Easy entrance on and off. Gilligan's Restaurant is located directly across the street. McDonald's and diner within walking distance. Downtown Harrisburg less than 10 minutes away. Centrally located. *Hersheypark®* less than 20 minutes from the hotel. Harrisburg Mall less than five minutes.

- Guest Rooms: 110



NOTES: _____

QUALITY INN RIVERFRONT

Located in the heart of the Hershey Harrisburg Region on the Susquehanna River, we are only 10 minutes away from Hershey, 30 minutes from Gettysburg and Lancaster. The hotel is within walking distance to Harrisburg's Restaurant Row, the PA State Capitol Complex, Strawberry Square, Whitaker Center, and City Island and the Harrisburg Senators. We offer a free hot breakfast buffet each morning, a seasonal outdoor pool, on-site restaurant, and free high-speed internet. The Quality Inn Riverfront is ideally located to all the major highways: I-83, I-81, PA Turnpike (I- 76), and Routes 11/15 and 322.

- Guest Rooms: 115
- **Comp Policy: 1 per 15. Driver/Tour Guide**



525 South Front Street
Harrisburg, PA 17104
717-233-1611 (Main)
717-238-2172 (Fax)
Email: salespa@wankawala.com
QualityInnRiverfront.com

RED LION HOTEL HARRISBURG HERSHEY

Located just minutes from *Hershey The Sweetest Place on Earth*® as well as Downtown Harrisburg, and the Harrisburg International Airport. Area attractions include *Hersheypark*®, *Giant Center*™, PA Farm Show Complex & Expo Center, and The National Civil War Museum. No other hotels near Hershey have the amenities to match the exceptional value you will receive when staying with us. Groups and families appreciate the comfort and enjoyment in our extra-large guest rooms featuring king beds or two queen beds. Experience our commitment to service excellence by staying with us during your next trip to the Hershey Harrisburg Region.

- Guest Rooms: 274



4751 Lindle Road
Harrisburg, PA 17111
717-939-7841 (Main)
717-939-9317 (Fax)
Email: salesteam@hiharrisburg.com
RedLion.com/harrisburg

RESIDENCE INN HARRISBURG NORTH

Travel like you live at our brand new all-suites Marriott hotel! Each room has a full kitchen and includes complimentary breakfast, Wi-Fi, and complimentary mixer (during select nights). Enjoy a drink at our full bar and get cozy by the fire in our outdoor courtyard. The Residence Inn & Suites Harrisburg North is centrally located to the Pennsylvania State Capitol Complex, PA Farm Show Complex & Expo Center, *Hersheypark*®, and other surrounding attractions.

- Guest Rooms: 123



2250 Kohn Road
Harrisburg, PA 17110
717-671-9300 (Main)
Email: sguyton@titanhotelgroup.com
Marriott.com/harl

NOTES: _____



4650 Lindle Road
Harrisburg, PA 17111
717-564-5511 (Main)
717-564-2476 (Fax)
Email:
contact@sheratonharrisburghershey.com
SheratonHarrisburgHershey.com

SHERATON HARRISBURG HERSHEY

For our motorcoach travelers, the Sheraton offers convenient on-site coach parking, 24-hour gift shop, an indoor/outdoor pool, large banquet rooms for group meals, a warm and welcoming staff, and many shops within walking distance. Our location is convenient for hub and spoke tours.

- Guest Rooms: 347
- **Comp Policy: Negotiated per tour**



15 Capital Drive
Harrisburg, PA 17110
717-540-5100 (Main)
717-540-5190 (Fax)
Email: sguyton@titanhotelgroup.com
Marriott.com/haret

SPRINGHILL SUITES BY MARRIOTT HARRISBURG HERSHEY

SpringHill Suites by Marriott Harrisburg / Hershey is centrally located to Pennsylvania's State Capitol Complex, PA Farm Show Complex & Expo Center, *Hersheypark*®, *Hershey's Chocolate World* Attraction, and surrounding destinations such as Lancaster's Amish Country and Gettysburg battlefields. You'll find plenty of room to relax in our generous suites, featuring upgraded West Elm Collection furniture, 37" flat-screen LCD HD TVs, microwave, mini-fridge, and free Wi-Fi. Revitalize each morning with our new breakfast buffet or end your evening with a relaxing cocktail at our Sky Lounge. We are proud to present a 100% smoke-free policy. Experience SpringHill Suites by Marriott Harrisburg Hershey.

- Guest Rooms: 118



115 Museum Drive
Hershey, PA 17033
717-583-2222 (Main) • 877-720-1291
717-583-2111 (Fax)
Email: Cmcclellan@horstrealty.com
Marriott.com/HARSH

SPRINGHILL SUITES BY MARRIOTT HERSHEY NEAR THE PARK

Location is everything - next to the world-class AACA Museum; one mile from *Hersheypark*®, *Hershey's Chocolate World*, *Giant Center*™; two miles from Tanger Outlets; a short drive to Hollywood Casino. Ample dining in every direction from casual to fine. Hershey is central for day-trips to Harrisburg, Lancaster/Amish Country, and Gettysburg attractions. All 80 rooms are studio suites-25% larger than standard hotel rooms, with comfortable seating area and pull out sleeper sofas, large-screen TVs with premium cable, kitchenette with microwave/mini-fridge/coffee service/sink, free Wi-Fi, indoor heated pool/spa, fitness center, 24-hour market, and free full breakfast. Meeting space onsite. Non-smoking/pet-free hotel with exceptional service! Buses welcome! Your Marriott awaits!

- Guest Rooms: 80 – King 34, Double 46



NOTES:

STAYBRIDGE SUITES HARRISBURG-HERSHEY

Studio, one-bedroom, and two-bedroom/two-bathroom suites are available in a home-like atmosphere, with a fully equipped kitchen in every room! Complimentary daily hot breakfast buffet, plus complimentary light dinner and beverages three evenings per week are provided in this upscale extended-stay hotel. We urge you to "get comfortable" and enjoy complimentary high-speed internet, free parking, business center, guest laundry facilities, BBQ pavilion, plus an indoor pool, fitness room, and IHG Rewards points. Located off I-81 near I-83, and convenient to the PA State Capitol and Downtown Harrisburg, the Staybridge Suites sits adjacent to the PA Farm Show Complex.

- Guest Rooms: 127



920 Wildwood Park Drive
Harrisburg, PA 17110
717-233-3304 (Main)
717-233-3305 (Fax)
Email: m.lund@guestsinc.com
Staybridgesuites.com/harrisburgpa

TOWNEPLACE SUITES BY MARRIOTT HARRISBURG/HERSHEY

Designed for the extended stay guest, our newly remodeled, spacious suites offer all the comforts of home. Every suite has a full kitchen, flat screen TV, and daily housekeeping. Unwind in our indoor pool and hot tub or stay fit in our exercise room with state-of-the-art equipment. Complimentary breakfast served each morning.

- Guest Rooms: 107 — Queen Suites 43, Queen with Sleeper 32, 1-Bedroom Suites 5, Suites with 2 Queens and Sleeper 11, 2-Bedroom Suites 16



450 Friendship Road
Harrisburg, PA 17111
717-558-0200 (Main)
717-558-0700 (Fax)
Email: Sarah.Tatanish@marriott.com
Marriott.com/HARTS

TRU BY HILTON HERSHEY CHOCOLATE AVENUE

Treat yourself when you stay with us! We're located in the heart of Hershey, close to *Hersheypark*®, *Giant Center*™ and *Hershey's Chocolate World*. Unpack with ease in a smaller, more efficient room, with heaps of storage space and free Wi-Fi. Stay healthy or savor sweet treats with our free build-your-own-breakfast. Enjoy hot scrambled eggs and chicken sausages, yogurt, granola, fruit, and oatmeal, or indulge in waffle boats, with over 30 dreamy toppings. Work, lounge, and play in our lobby, complete with games and cozy alcoves. Our lobby also offers free Lavazza coffee, tea, hot chocolate, and flavored syrups, available 24/7. Stay in shape in the fitness room with our interactive workout app.

- **Comp Policy: Based on the number of rooms actualized and date of arrival.**



- Guest Rooms: 112



204 Hillcrest Road
Hershey, PA 17033
717-531-3400 (Main) • 800-HILTONS
Email: jparker@gospringwood.com
HersheyChocolateAvenue.TrubyHilton.com

NOTES: _____



2285 Lincoln Highway East
Lancaster, PA 17602
717-925-7834 (Main) • 833-TOONHTL
717-740-2776 (Fax)
PalaceEntertainment.com/
cartoonnetworkhotel

CARTOON NETWORK HOTEL

Everything you love about Cartoon Network in one fun, family resort! Stay with us to experience themed rooms, enjoy delicious dishes straight from your favorite shows, and immerse yourself in the world of cartoons with daily activities and adventures!

- Guest Rooms: 159



P.O. Box 6658
Harrisburg, PA 17112
717-657-9658 (Main)
717-652-9476 (Fax)
Email: ckelly@lowees.com
Lowees.com

LOWEE'S GROUP TOURS/INNOVATIVE COACHES

We have been in business for over 30 years and pride ourselves on providing an exceptional event. We offer services for every age group from students to seniors. Our tours and events are specially designed to create a unique experience. Groups are our Specialty! Since 1984, we have provided the very best in tours and service in the business. As thousands of satisfied groups will agree, you are in good hands with us. Need a guide, motorcoach, or a great Heart of Pennsylvania Tour? We've got you covered! At Lowee's Group Tours and Innovative Coach, we understand our job is to make you look good!



2000 Vine Street
Middletown, PA 17057
717-616-8995 (Main)
717-616-8415 (Fax)
Email: info@premiere1limousine.com
Premiere1Limousine.com

PREMIERE #1 LIMOUSINE SERVICE

Premiere provides luxury transportation services in the Central PA region and beyond. Our fleet of over 50 vehicles includes luxury sedans, SUVs, passenger vans, corporate limousines, minibuses, and luxury motorcoaches. Our 24-hour dispatch center always takes your call 365 days a year. Transportation services offered: airport shuttles; group logistics planning; corporate moves; special occasions and events; and local tours in Hershey, York, Harrisburg, Gettysburg, and Carlisle. Airports Served: Harrisburg International (MDT); Baltimore Washington International (BWI); Reagan National (DCA); Newark Liberty International (EWR); Dulles International (IAD); John F. Kennedy International (JFK); and Philadelphia International (PHL).

NOTES:

UNIQUE LIMOUSINE

Coordinating an event with Unique Limousine is one of the most relaxing business experiences imaginable. Every day, our staff switches gears faster and smoother than the luxury vehicles in our 25,000-square foot garage. With vehicles ranging from three Passenger Lincoln MKT Sedans up to 56 passenger coaches, from elegantly sedate styles to off-the-charts wild. Unique Limousine offers you unparalleled service and selection. Our staff is "Unique," too. Every person in the company has gone through extensive screening, including intensive background checks, driving reports, drug testing, child abuse checks, and character references. If everything isn't spotless, they're not part of the team.



1900 Crooked Hill Road
Harrisburg, PA 17110
717-233-4431 (Main)
717-233-3949 (Fax)
Email: info@uniquelimousine.com
UniqueLimousine.com

BAILEY COACH

Ride in style with Bailey Coach! Our fleet of late-model deluxe motor-coaches provides transportation for schools, churches, senior groups, and team travel. Our luxury coaches offer seating for 26, 40, 47, or 55 passengers and feature: panoramic windows, FM radio, fully equipped DVD/CD players, restrooms, individual light and air controls, satellite tracking, and plush reclining seats with armrests. For smaller groups and individuals, we offer private car and van transportation. Our comfortable luxury sedans and passenger vans are perfect for small group outings or transfers to the region's airports, train stations, and cruise terminals!



1708 Route 116 • PO Box 367
Spring Grove, PA 17362
717-718-0490 (Main)
717-718-4069 (Fax)
Email: info@baileycobach.com
BaileyCoach.com



ELITE COACH

For more than 25 years, Elite Coach has provided worry-free transportation services to businesses, schools, groups, clubs, families, and individuals. Our specialties include local and long-distance travel, pier/airport transfers, corporate/group/wedding/event shuttle services, and tour planning services. Our fleet offers seating for 26, 30, 38, 47-56 passengers, featuring plush reclining seats, climate control, DVD, restrooms, 120 V outlets, and Wi-Fi. Elite Coach's professional drivers take pride in making every trip a great experience for our passengers. We strive to exceed the expectations of every customer. One trip at a time.



1685 West Main Street
Ephrata, PA 17522
717-733-7710 (Main)
800-722-6206
Email: info@elitecoach.com
EliteCoach.com

NOTES: _____



THE BEARS' DENSM

Catch all the sports action on a 7' x 12' video wall and more than 39 HDTVs in a casual, hockey-themed atmosphere. Whatever the season, *The Bears' Den* at *Hershey LodgeSM* keeps you in the game.

Hershey Lodge
325 University Drive
Hershey, PA 17033
717-534-8601 (Main)
DiningInHershey.com



THE CIRCULAR[®]

Dine in a historic venue at *The Circular*, built by Milton S. Hershey himself. Enjoy iconic tastes with a refined flair, a full-service bar offering an extensive wine and cocktail list, and desserts made from an award-winning pastry chef all while dining in an environment that blends the best of classic and modern.

The Hotel Hershey
100 Hotel Road
Hershey, PA 17033
717-534-8800 (Main)
DiningInHershey.com



COCOA BEANERY[®]

Specialty coffees, espresso, pastries, and lunch items are served. Hold a birthday, anniversary, or special event in the private party space at *Cocoa Beanery's* Research Boulevard location. Select a customized menu for your event and enjoy a private space for up to 12 guests, plus exclusive use of the entire restaurant space after operating hours.

DiningInHershey.com

Hershey LodgeSM
325 University Drive
Hershey, PA 17033

Research Boulevard
1215 Research Boulevard
Hummelstown, PA 17036
717-508-5986

NOTES: _____

DEVON SEAFOOD + STEAK

Get a taste of fresh at Devon Seafood + Steak. Comfortably upscale and refined, Devon provides the perfect atmosphere to enjoy everything from deliciously simple fish dishes to premium steaks and salads, plus an impressive wine cellar list and cocktail menu to complement your one-of-a-kind dining experience. Private dining space is also available.



27 West Chocolate Avenue
Hershey, PA 17033
717-508-5460 (Main)
DiningInHershey.com

FENICCI'S OF HERSHEY

Hershey's oldest free-standing restaurant; a Hershey tradition since 1935! A local favorite for 80+ years. Featuring our famous DeAngelis sauces and our upside-down pizza. Our full menu of homemade Italian dishes features steak, seafood, pasta, and sandwich selections. Full menu offered all day and late night. Home to the stars of the Hershey Theatre. Fenicci's of Hershey is conveniently located on Chocolate Avenue across from The Hershey Story Museum on Chocolate Avenue. Dine on our outdoor patio overlooking the *Kissing Tower*SM and enjoy all that Downtown Hershey has to offer. We invest in Hershey because we believe in Hershey. Top rate on Trip Advisor & other sites. Featured in USA Today and Comcast Best of the City.



102 West Chocolate Avenue
Hershey, PA 17033
717-533-7159 (Main)
717-534-9124 (Fax)
Email: bill@feniccis.com
Feniccis.com

FIRE & GRAIN®

Experience the energetic and engaging atmosphere of *Fire & Grain*®, featuring gathering tables, a fire wall, and a full-service bar. Enjoy an innovative breakfast and dinner menu of re-mastered comfort foods and cocktails perfect for breakfast with your family, dinner with friends, or cocktails with co-workers.



Hershey Lodge
325 University Drive
Hershey, PA 17033
717-534-8601 (Main)
DiningInHershey.com

NOTES: _____



The Hotel Hershey
100 Hotel Road
Hershey, PA 17033
717-534-8800 (Main)
DiningInHershey.com

HARVESTSM

Experience farm-to-fork freshness at *Harvest*. With an ever-changing menu inspired by local and regional ingredients, you'll always get a delicious taste of something completely new. Plus, enjoy a variety of beverages including cocktails, wine, and micro-brews at the bar and an exciting and fun game room.



HARVEST SEASONAL GRILL & WINE BAR

Seasonally changing, farm-to-table restaurant. Progressive wine list.

- Can accommodate all food allergies and dietary restrictions (gluten, dairy, vegetarian)
- Chef-driven, made-from-scratch kitchen
- Private dining space available in a polished, casual atmosphere
- Brunch is offered Saturday 11 AM - 3 PM and Sunday 10 AM - 3 PM

2625 Brindle Drive
Harrisburg, PA 17110
717-545-4028 (Main)
Email:
harrisburg@harvestseasonalgrill.com
HarvestSeasonalGrill.com



HERSHEY GRILLSM

Feed your curiosity at *Hershey Grill* where fresh, flavorful dishes highlight the best tastes of the season in creatively unexpected ways. Enjoy exceptional service, an expansive menu selection, a full bar with a daily happy hour, and the sweet satisfaction that can only come from a meal out in *Hershey The Sweetest Place On Earth®*! Outdoor seating is available seasonally.

Hershey Lodge
325 University Drive
Hershey, PA 17033
717-534-8601 (Main)
DiningInHershey.com

NOTES:

HOULIHAN'S RESTAURANT + BAR

Discover your next-favorite meal at Houlihan's of Hershey. Stylishly modern and laid back, Houlihan's serves up fresh, from-scratch dishes, handcrafted cocktails, and always delicious appetizers perfect for whatever dining experience you're craving. Outdoor dining available seasonally.



27 West Chocolate Avenue
Hershey, PA 17033
717-534-3110 (Main)
DiningInHershey.com

IBERIAN LOUNGESM

The perfect place for your *Hotel Hershey*® nightcap. Lite fare, chocolate cocktails, and more than 100 whiskeys from around the world, are served by the grand fireplace in this cozy lounge.



The Hotel Hershey
100 Hotel Road
Hershey, PA 17033
717-534-8800 (Main)
DiningInHershey.com

REVELRYSM

Revelry serves up classic and contemporary chophouse fare with premium cuts and the largest wine & spirits list in the house. Settle into our dining room, claim a stool at the bar, or venture out to the rooftop patio during the warmer months, and savor a spirited evening of fine food and drinks.



Hershey Lodge
325 University Drive
Hershey, PA 17033
717-534-8601 (Main)
DiningInHershey.com

NOTES: _____



2531 Brindle Drive
Harrisburg, PA 17110
717-671-4945
catering@macgrill.com
MacaroniGrill.com

ROMANO'S MACARONI GRILL

The best host is one who greets their guests with generosity, open arms, and most importantly, two free hands. Put more on your guests' plates and less on yours by letting us cook up the perfect feast for your next event. We offer specially put together tour group entree selections, please contact Melissa Rizvi at melissa.rizvi@macgrill.com for any quote requests. We look forward to hosting your group at Romano's Macaroni Grill.



270 North Street
Harrisburg, PA 17101
717-317-9027 (Main)
Email: info@rubiconhbg.com
RubiconHBG.com

RUBICON

Rubicon is a playfully French-inspired, bar-centric restaurant, offering honest epicurean fare. Our meals are prepared with fresh, locally grown produce and farm-raised meats, as well as imported gourmet items. This beautiful restaurant, located near the PA State Capitol, is an unconventional setting for your next luncheon, business or networking event, spirit tasting or wedding reception.



The Hotel Hershey
100 Hotel Road
Hershey, PA 17033
717-534-8800 (Main)
DiningInHershey.com

TREVI 5SM

Indulge your senses in authentically-modern Italian cuisine at *Trevi 5*. The clean, Mediterranean ambiance, five-flavor food combinations, and exceptional service will envelop you in the best of Italy – all while being wrapped up in the sweetness and hospitality of Hershey. This resort casual space also has a private dining area which can seat up to 14 guests. Outdoor dining available seasonally.

NOTES: _____

ALS OF HAMPDEN / PIZZA BOY BREWING CO.

PIZZA. BEER. HAPPY.

102 taps!



2240 Millennium Way
Enola, PA 17025
717-728-3840 (Main)
Email: info@alsofhampden.com
AlsOfHampden.com

SHADY MAPLE SMORGASBORD

Shady Maple is a family tradition! Discover the experience of dining at Lancaster County's largest smorgasbord. Our cooks prepare great tasting food in a traditional Pennsylvania Dutch style. Enjoy all your favorites, as well as exciting new dishes. Our daily features are designed to tempt your taste buds.



129 Toddy Drive
East Earl, PA 17519
717-354-8222 (Main) • (800) 238-7363
Email: store@shady-maple.com
Shady-Maple.com

HERSHEY® COUNTRY CLUB

Choose *Hershey Country Club* for your next meeting. Our attentive and guest-focused team will create an environment that will exceed your expectations and allow discussions to take center stage. *Hershey Country Club* features a variety of meeting spaces to fit your needs. The Keystone Ballroom offers panoramic views of the East and West courses in an elegant setting, while the Jay Weitzel Room, adjacent to the Ballroom, is just the right size for more intimate events and small meetings. Our four-season Picard Grand Pavilion boasts a scenic view of the distinctive East and West courses at *Hershey Country Club* and provides a unique setting for banquet events.



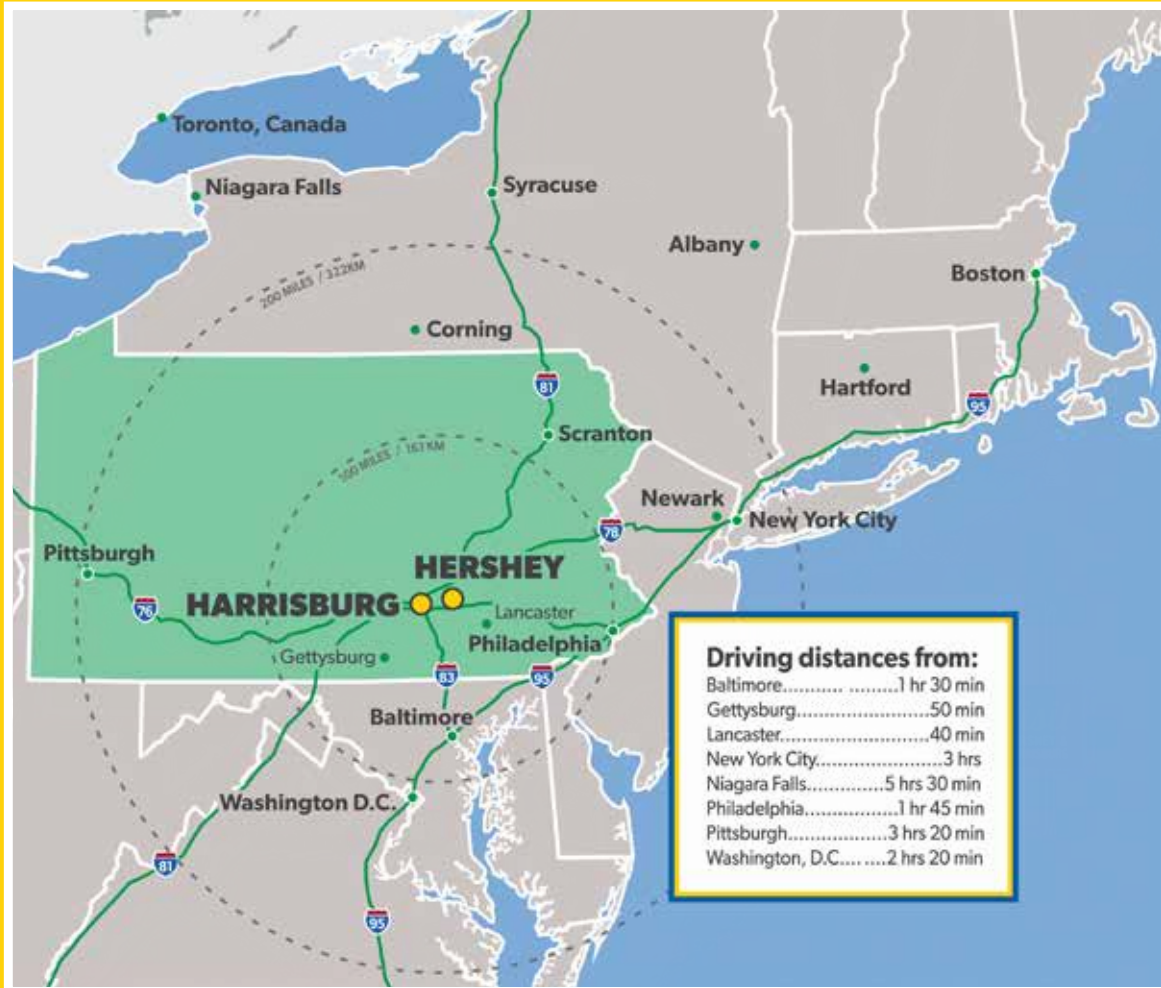
1000 East Derry Road
Hershey, PA 17033
717-533-2360 (Main)
Email: gweaver@HersheyPA.com
HersheyCountryClub.com

NOTES: _____



Getting Here

The Hershey Harrisburg Region is within a few hours traveling distance of many major cities and is easily accessible by the Pennsylvania Turnpike, Amtrak's® Keystone Service, and Harrisburg International Airport (MDT), which offers nearly 70 flights a day. For the most up-to-date information, go to FlyHIA.com.



Fly to Harrisburg International Airport (MDT) Nonstop from

Atlanta – Delta
Boston – American
Charlotte – American
Chicago – American/United
Dallas Fort Worth – American

Detroit – Delta
Myrtle Beach – Allegiant
Nashville – Allegiant
Punta Gorda – Allegiant
Orlando – Frontier

Orlando/Sanford – Allegiant
Philadelphia – American
Sarasota/Bradenton – Allegiant
Tampa/St. Petersburg – Allegiant
Washington D.C. – United

Visit **HERSHEY & HARRISBURG**