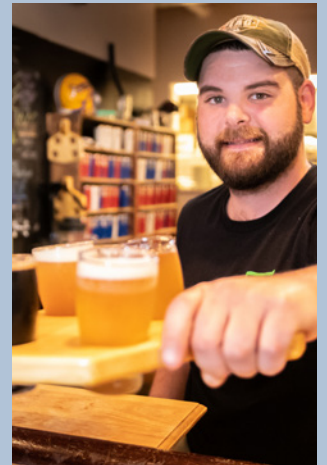




Group Planner

Groups.VisitHersheyHarrisburg.org

Visit
HERSHEY &
HARRISBURG



Come Together for Group Tour Travel

We're thrilled you're considering the Hershey Harrisburg Region for your next group outing! Arranging a getaway can be hassle-free when you enlist the experts at Visit Hershey & Harrisburg who work closely with a variety of group-friendly venues and services to ensure the planning process is streamlined and smooth. To see all that the region has to offer, browse through the listings in this publication and visit Groups.VisitHersheyHarrisburg.org for sample itineraries, group services, and more. When you're ready to get your plans on paper, reach out to our Group Sales Team at Sales@HersheyHarrisburg.org. You'll be in good hands with a professional who's helped coordinate hundreds of group tours to the Hershey Harrisburg Region. We'll see you soon!

Group Planner Services

Promotional Support
On-site Support
VIP Greetings
Site Inspections
Local Attraction Information
Shuttle Service
Referrals & Coordination
Welcome Bags
Venue Procurement

Table of Contents

Attractions	5
Lodging	12
Transportation	22
Dining	24

Pennsylvania
pursue your happiness™

U.S. TRAVEL
ASSOCIATION®



The Hershey Harrisburg Region Group Planner is the official group tour planner of Visit Hershey & Harrisburg. Photos throughout this publication are courtesy of Visit Hershey & Harrisburg unless otherwise indicated. Cover photo credits: *Hersheypark* photo courtesy of *Hershey Entertainment & Resorts Company*.

Copyright 2022 by Visit Hershey & Harrisburg. All rights reserved. Reproduction or use without permission of editorial or graphic content in any manner, including electronic reproduction, is prohibited.

Large and City-wide Events in the Hershey Harrisburg Region

2022 Summer Genesis Elite Combine (Lacross) | June 18-19
2022 USJN Hershey Showcase (Basketball) | June 25-28
2022 Mecum Car Auction | July 27-30
2022 America's Largest RV Show | September 14-18
2022 Eastern Division National Fall Meet | October 4-7
2022 Pennsylvania National Horse Show | October 13-23

2022 Joyce Meyer Hershey | November 4-5
2022 PA Christmas & Gift Show | November 30 - December 4
2023 PA Farm Show January 7-14
2023 PIAA Competitive Spirit Championships | Jan TBD
2023 Great American Outdoor Show | February 4-12

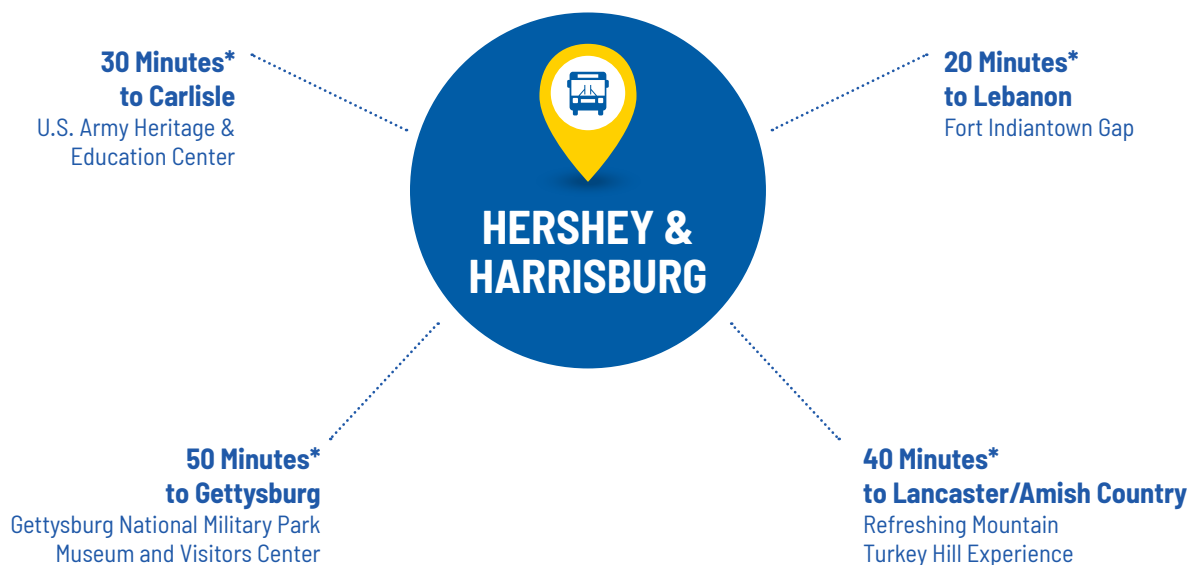
For a full list of events: VisitHersheyHarrisburg.org/Events

Icon Key:



Stay With Us! We're Close To It All!

Location. Location. Location! The Hershey Harrisburg Region is close to some of Pennsylvania's most popular attractions, making us an ideal "hub and spoke" destination for groups. In less than an hour, you can visit some of our neighboring Partner attractions!



*Times are approximate

Mileage Chart

Follow the rows and columns on the chart to calculate the approximate mileage between our popular attractions. **Example: It is approximately 15 miles between the AACA Museum and National Civil War Museum.**

	Hersheypark / Chocolate World / Giant Center	Hershey Gardens & Conservatory	The Hershey Story Museum	AACA Museum, Inc.	Hershey Theatre	Adventure Sports in Hershey	Lake Tobias Wildlife Park	National Civil War Museum	PA Farm Show Complex & Expo	Escape Room at ABC East Lanes	The Pride of the Susquehanna	PA State Capitol
Hershey Gardens & Conservatory	2											
The Hershey Story Museum	>1	2										
AACA Museum, Inc.	2	3	3									
Hershey Theatre	2	1	<1	3								
Adventure Sports in Hershey	5	6	4	7	4							
Lake Tobias Wildlife Park	36	36	36	34	36	38						
National Civil War Museum	14	14	14	15	14	16	23					
Farm Show Complex & Expo Center	17	17	17	15	18	20	20	2				
Escape Room at ABC East Lanes	21	19	11	10	11	14	28	6	7			
Pride of The Susquehanna	15	16	15	16	15	17	23	3	3	7		
PA State Capitol	15	15	15	16	14	17	23	3	2	7	1	
Hollywood Casino at Penn National	15	8	9	9	9	13	33	16	16	19	18	17

Hershey Area

Harrisburg Area

Kisses, Coasters, Cars & More!

HERSEYPARK®

Discover the place *Where Fun Meets Chocolate®* at Hersheypark®! Experience thrills from mild to wild on 15 coasters, splashes for the whole family in the expansive waterpark, and meet your favorite local wildlife at ZooAmerica® North American Wildlife Park – all included in your ticket! Plus, enjoy seasonal events, including Springtime, Halloween, and Christmas celebrations.

HERSEY'S CHOCOLATE WORLD ATTRACTION

Guests are greeted with the scent of **chocolate** the moment they walk in the door! **Sweet activities** include the free Chocolate Tour Ride, complete with a complimentary Hershey's product sample, the Create Your Own Candy Bar attraction, Hershey's Unwrapped tasting experience, the 4D Chocolate Movie digital animation show, and more. **Stock up** on your favorite (and tough-to-find) Hershey's brand confections in the World's Largest HERSHEY'S Candy Store. After they've filled a bag with goodies, discover something new about America's sweetest town with a Hershey Trolley Works tour.

THE HERSEY STORY, THE MUSEUM ON CHOCOLATE AVENUE

For well over 100 years, Hershey has been synonymous with the Great American Chocolate Bar. Start at the beginning of "The Hershey Story," an **inspirational journey** through the life of Milton S. Hershey. Learn about the man, his chocolate company, the town that bears his name, and everything about his **philanthropic legacy**. Save room for a 45-minute, hands-on class in the Chocolate Lab!

AACA MUSEUM, INC.

Cruise through time with vintage cars, buses, motorcycles, and other memorabilia in period-themed scenes at this world-class automotive museum! With an **interactive kids' area** and changing exhibits, the AACA Museum is a great attraction for all ages and interests. Not to mention it's recognized by the Smithsonian as an Affiliate Museum, an extremely rare honor that speaks well of its **pristine collection**.

HERSEY GARDENS & CONSERVATORY

What began as a request from Mr. Hershey for a "small garden of roses" now spans more than 20 acres of breathtaking flower beds, tree groves, and shrub lined pathways **overlooking the town of Hershey**. Being here when it's in bloom is a sight to behold, but its 14,000-square foot conservatory and tropical Butterfly Atrium makes it a **year-round must-see**.



HERSEY'S CHOCOLATE
WORLD ATTRACTION



THE HERSEY STORY, THE
MUSEUM ON CHOCOLATE AVENUE

Art, History, Tours & More!

PENNSYLVANIA STATE CAPITOL BUILDING

See the **architectural and artistic** highlights of our Capitol building, a place President Teddy Roosevelt called “the handsomest building” he’d ever seen! Take a free, guided tour through this “Palace of Art,” featuring its famous collection of stained-glass windows, indoor and outdoor sculptures, lush décor, and **impressive murals and paintings**. Stop by the kid-friendly interactive Welcome Center to learn about Pennsylvania history and legislative processes of the Commonwealth.

THE NATIONAL CIVIL WAR MUSEUM

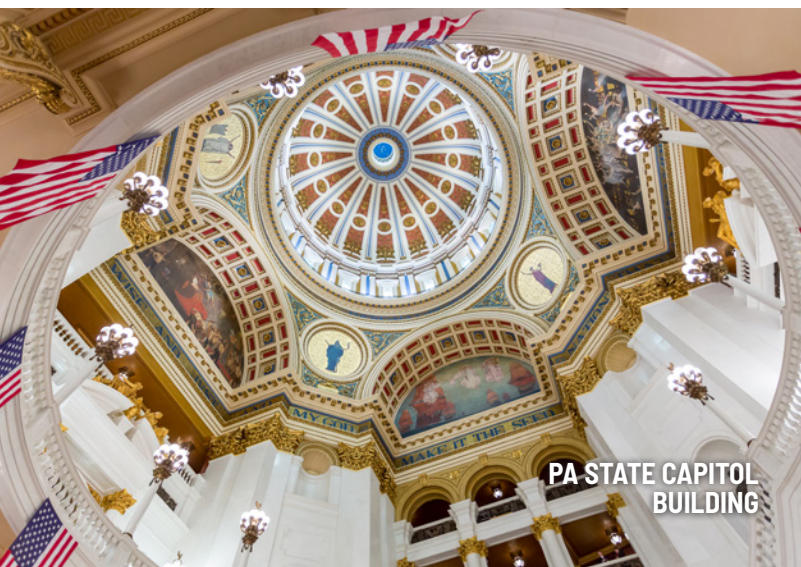
Discover the whole story of the American Civil War, a restless chapter of our nation’s history, as told from **both sides of the battlefield**. The Smithsonian-affiliated National Civil War Museum has two floors of exquisite exhibits and thousands of **three-dimensional relics**, including uniforms, weapons, and personal effects of the fallen soldiers.

PRIDE OF THE SUSQUEHANNA RIVERBOAT

Get a unique perspective of the city from the top deck of the Pride of the Susquehanna Riverboat, one of only six **authentic paddlewheel** riverboats in the country. Float along the mighty Susquehanna River while enjoying live music, a hand-crafted cocktail, or a sunset dinner cruise. Check the schedule for **themed cruises**, such as Pirates and Princesses. Saturday mornings provide a boatload of education during the Susquehanna River School, a **floating classroom** teaching kids about the river’s ecology and how to be good stewards of the environment.

STEP-ON GUIDES

Instead of exploring the city on your own, consider enlisting the help of one of our region’s **knowledgeable and professional** guides. Lowee’s Group Tours can provide guide service and also tour manager services. Invite a historian onto your bus to provide unique windshield tours and historical **narration** with Historic Harrisburg Association. Get the inside scoop on Harrisburg’s best restaurants with a **foodie tour** or discover the meaning behind the city’s breathtaking murals with a guided walk. Let us show you around!



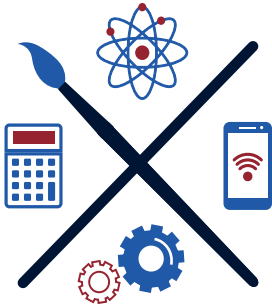
PA STATE CAPITOL BUILDING



PRIDE OF THE SUSQUEHANNA RIVERBOAT

STEM, Scouting & Home School Activities

The Hershey Harrisburg Region is not your average field trip, with our sweet mix of fun and learning. Allow your class or troop to get hands-on, earn scout badges, and exercise their minds with interactive experiences that never cease to amaze, entertain, and teach.



STUDENT STEM PROGRAMS

- **Hersheypark® (page 7):** There's plenty of learning and fun to be had at *Hersheypark*, featuring hands-on educational experiences across many curriculums, from physics and STEM to Business and Marketing.



SCOUT BADGES

- **Hersheypark® Camping Resort (page 16):** Troops can combine coasters, camping, and s'mores on this sweet scout getaway.
- **Lake Tobias Wildlife Park (page 8):** Be on the lookout around the park on a Scavenger Hunt to earn a Lake Tobias patch.
- **Pennsylvania State Capitol Building:** There's a lot to explore around the Capitol building, including fun facts, fascinating history, and cool stuff for scouts along the way.
- **The Hershey Story, The Museum on Chocolate Avenue (page 8):** Fun and unique Scouting programs designed to immerse Cub Scouts, Junior Girl Scouts, and Brownies in a variety of topics.



HOME SCHOOL

- **Hershey Gardens (page 6):** From game and craft learning stations to tree identification and scavenger hunts, let education bloom here.
- **The Hershey Story, The Museum on Chocolate Avenue (page 8):** Explore the museum with a sweet scavenger hunt then participate in a Chocolate Lab class.

AACA MUSEUM, INC.

Take a walk down memory lane, decade by decade, all scenes and settings of a cross country journey! Special automobile featured exhibits change several times each year so there is always something new to see. Permanent exhibits include a 1950's Drive-In, a 1940's Valentine Diner and the World's largest collection of Tucker automobiles. There is something for everyone, no matter the age. Groups can enjoy the museum on a self-guided tour, a guided tour with advance reservations or groups can also enjoy lunch, hors d'oeuvres, or dinner at the museum. Call us to find out how we can make the museum work for you!

- **Comp Policy: Group Tour Leader + Bus Driver**



161 Museum Drive
Hershey, PA 17033
717-566-7100 (Main)
717-566-7300 (Fax)
Email: Ticket@AACAMuseum.org
AACAMuseum.org

ADVENTURE SPORTS IN HERSHEY

Celebrating 30 years in 2022!

Family entertainment center features go-karts, miniature golf, batting cages, golf driving range, bumper boats, arcade, and outdoor laser tag. Group packages are available for both professional and recreational needs. Outdoor laser tag is especially attractive for team building fun. Plan a laser tag outing on our three-acre field. Either way, fun, and memories are created. Open year-round. Can you solve the puzzles to find your way out of our 3 mini escape rooms?

Follow us on Facebook, Instagram, and YouTube.



3010 Elizabethtown Road
Hershey, PA 17033
717-533-7479 (Main)
Email: fun@adventurehershey.com
AdventureHershey.com
EscapeHershey.com

DAUPHIN COUNTY PARKS & REC

Dauphin County is home to five amazing parks that are available year-round. Travel back in time with a remarkable mansion tour at Fort Hunter Park with amazing views of the Susquehanna River. Appreciate nature and Art in the Wild while you stroll around Wildwood Park. Immerse yourself in the forest with a hike in Detweiler Park. The Dauphin County Parks & Recreation Department offers many summer festivals, special events, and educational programs to experience. Picnic pavilions are available to rent at all parks for group meals and activities. Plan a group visit soon!



100 Fort Hunter Road
Harrisburg, PA 17110
717-599-5188
Email: NLGates@dauphininc.org
www.dauphincountyparks.org

NOTES: _____



550 West Hersheypark Drive
Hershey, PA 17033
717-534-3911 (Main)
Email: Info@HersheyPA.com
GiantCenter.com

GIANT CENTERSM

Giant Center arena is home to the *Hershey Bears*[®] hockey club, a member of the American Hockey League. In addition, it also hosts a sensational lineup of star-studded performances, including concerts, family events, and other special attractions. Many shows offer discounts for groups of 15 or more.



550 West Hersheypark Drive
Hershey, PA 17033
717-534-3380 (Main)
717-508-1575 (Fax)
Email: hersheybears@HersheyPA.com
HersheyBears.com

HERSHEY BEARS[®] HOCKEY

The *Hershey Bears* are the AHL's most storied franchise and play regular-season home games at *Giant Center*SM October through April.



170 Hotel Road
Hershey, PA 17033
717-508-5970 (Main)
Email: info@hersheygardens.org
HersheyGardens.org

HERSHEY GARDENS

- The Milton & Catherine Hershey Conservatory features a year-round indoor Butterfly Atrium, with hundreds of tropical and North American butterflies, as well as an Educational & Horticultural Wing, hosting changing horticultural displays.
- The 23-acre botanical garden is filled with magnificent theme gardens, colorful seasonal displays and the historic rose garden that boasts over 3,000 rose bushes.
- The Gardens Shop offers a wide variety of distinctive home and garden items, as well as fun, educational items for the kids.
- Guided tours are available, as well as self-guided tours.



- **Comp Policy: Receive one complimentary ticket for every 20 paid admissions.**

NOTES:

HERSHEYPARK®

Hersheypark delights groups with thrilling coasters, classic family rides, an ENTIRE water park, ZooAmerica® North American Wildlife Park, and so much more! Plus, this summer our skyline just got brighter with two new Jolly Rancher attractions; a reimagined coaster, *Jolly Rancher Remix™*, and an all-new family ride, *Mix'd™ Flavored By Jolly Rancher*.

- Groups can save with catered picnics, meal tickets, or snack vouchers – all at a special rate.
- 1 FREE Ticket, For Every 10 Purchased
- Free admission to ZooAmerica when entered from within Hersheypark
- Access to Hershey's Chocolate World Attraction



100 West Hersheypark Drive
Hershey, PA 17033
1-800-242-4236: Option 1 (Sales Office)
Email:
HersheyparkGroups@HersheyPA.com
HersheyparkGroups.com



HERSHEYPARK SUPPLY CO.

Take home a piece of Hersheypark® from our premier, 10,000-square-foot flagship store located in the Hershey's ChocolateTownSM region. Browse the largest collection of apparel, gifts, toys, and more exclusive to Hersheypark.



100 W. Hersheypark Drive
Hershey, PA 17033
717-534-3900 (Main)
Hersheypark.com

HERSHEY'S CHOCOLATE WORLD ATTRACTION

Unwrap your Chocolate Adventure with a visit to Hershey's Chocolate World in Hershey, PA. Step inside a sweet experience for your senses, where there's chocolate in the air and dessert is always on the menu. Take a delicious journey from tropical cocoa bean to wrapped candy bar in the FREE chocolate factory tour ride with a complimentary sample. Choose your ingredients and design your own wrapper in the Create Your Own Candy Bar experience. Dazzle your senses as you learn the art and science of chocolate tasting in the interactive theatrical experience, HERSHEY'S Unwrapped. Hop on the Hershey's Trolley for an experience of fun facts, laughter, history and chocolate samples. The 4D Chocolate Mystery show takes you on a sweet dimension through stunning digital animation and special effects. The World's Largest HERSHEY'S Store, chocolate-inspired entrees & desserts and exclusive dining experiences including S'mores & Reese's Stuff Your Cup are sure to make you a chocolatier.



101 Chocolate World Way
Hershey, PA 17033
717-520-8981 (Main)
717-520-8859 (Fax)
Email: groupsales@hersheys.com
HersheysChocolateWorld.com



- **Comp Policy: Receive one (1) complimentary ticket for every 20 paid admissions (on attractions only)**

NOTES: _____



63 West Chocolate Avenue
Hershey, PA 17033
717-534-8939 (Main)
717-534-8940 (Fax)
Email: group tours@HersheyStory.org
HersheyStory.org

HERSHEY STORY, THE MUSEUM ON CHOCOLATE AVENUE

Hershey starts here! Located in Downtown Hershey under the iconic Hershey's Kisses streetlights, The Hershey Story is the place to discover all things Hershey: the man, the town, the chocolate, and the school that bears his name. The Museum Experience will guide visitors on a journey through Milton Hershey's lifetime and beyond. Learn how he went from bankruptcy to brilliance, transforming chocolate from a luxury to an everyday treat. Groups can also take a delicious, hands-on class in the Chocolate Lab, where they'll explore the unique qualities of chocolate and make something to take home. Become immersed in the sweet world that inspired Milton Hershey at Tastings, where groups can taste warm drinking chocolate from around the world.



• **Comp Policy: Receive one complimentary ticket for every 20 paid admissions.**



777 Hollywood Boulevard
Grantville, PA 17028
717-469-2211 (Main)
Email: club.hollywood@pngaming.com
HCPN.com

HOLLYWOOD CASINO AT PENN NATIONAL RACE COURSE

A red carpet experience awaits your group when you visit Central Pennsylvania's premier casino, dining, and entertainment facility and just minutes away from Hershey and Harrisburg. Surround yourself with excitement as you take a seat at the hottest slot machines and table games around. Experience the heart-pounding thrills of live thoroughbred racing. Place your bets at our Sportsbook, or online at HollywoodCasino.com. Indulge in our award-winning restaurants, and dance the weekend away to nationally-acclaimed tribute acts and renowned local bands. At Hollywood Casino, it's all about providing A+ Service to every guest, every time. Come visit and see why there's truly "No Place Like Hollywood!"



GAMBLING PROBLEM? CALL 1-800-GAMBLER FOR HELP.



760 Tobias Road
Halifax, PA 17032
717-362-9126 (Main)
717-362-9993 (Fax)
Email: reservations@laketobias.com
LakeTobias.com

LAKE TOBIAS WILDLIFE PARK

Experience the wild with hundreds of animals from around the world. Guided Safari Tours take you over 150 acres of rolling hills with herds of animals, flightless birds, and giraffes. Encounter the exotic as you stroll around the zoo exhibits where interesting creatures educate and entertain you. The Reptiles & Exotics Facility will thrill you with eye-opening presentations that will enlighten you on these fascinating creatures. You can even touch an alligator if you dare! Visit the Museum & Education Center for the history of the park, hands-on activities for children and a 500-gallon aquarium with stingrays. Picnic tables, concessions, and souvenirs available. Come, join us for a day of wild adventure. Open May through October. Visit our website at LakeTobias.com and check out our Facebook page.



NOTES:

MELTSPA® BY HERSHEY

Located in downtown Hershey, *MeltSpa* by Hershey offers massage, facials, body treatments, manicures, pedicures, and salon services. Experience our exclusive *Hershey's* Dark Chocolate Treatments, or enjoy collections inspired by the season. Our full range of more than 70 spa treatments and salon services are paired with convenient evening hours, seven days a week so you can always fit in time for relaxation.



11 East Chocolate Avenue
Hershey, PA 17033
855-500-2366 (Main)
MeltSpa.com

THE NATIONAL CIVIL WAR MUSEUM

Come face to face with history at The National Civil War Museum! With extraordinary displays, this museum covers the entire American Civil War from beginning to end. We bring history to life with outstanding collections of Union and Confederate artifacts, high definition videos, and life-size mannequins. The self-guided tour includes 17 galleries of inspiring, balanced presentations. A panoramic view of Harrisburg and magnificent Grand Rotunda add to the unique ambiance of this inspirational setting. Exceptional banquet facilities make this the perfect venue for an exclusive private affair. Group rates available for parties of 10+ with advanced reservations. Our Education Department is dedicated to making student field trips an exceptional learning experience.



1 Lincoln Circle, at Reservoir Park
Harrisburg, PA 17103
717-260-1861 (Main)
717-260-9599 (Fax)
Email:
info@nationalcivilwarmuseum.org
NationalCivilWarMuseum.org



PENNSYLVANIA FARM SHOW COMPLEX & EXPO CENTER

The PA Farm Show Complex & Expo Center is a premier destination for hundreds of motor coach and groups looking for unique events. Free, designated coach loading and unloading area. Events with group-friendly rates. Easy access to major interstates. Banquet facilities for groups up to 1200. Group friendly hotels located within 1 mile from the Complex.

Annual Events: PA Farm Show, PA Auto Show, Great American Outdoor Show, Home Builders Show, Keystone International Livestock Show, All American Dairy Show, PA Christmas Craft & Gift Show, PA National Horse Show, Mecum Auto Auction, Horse World Expo.



2300 North Cameron Street
Harrisburg, PA 17110
717-787-5373 (Main)
717-783-8710 (Fax)
Email: farmshow@pa.gov
PAFarmShowComplex.pa.gov/



NOTES: _____



1 Riverside Drive, City Island
Harrisburg, PA 17101
717-234-6500 (Main)
717-234-9902 (Fax)
Email: info@harrisburgriverboat.com
HarrisburgRiverboat.com

PRIDE OF THE SUSQUEHANNA RIVERBOAT

Come ride one of the last remaining paddle-wheel driven riverboats in the country. The Pride offers tourists spectacular views of the river scenery and the beautiful Pennsylvania State Capitol. We offer tours daily throughout the summer, and special events like live music and dinner cruises occur most nights.

- Full bar
- Galley kitchen
- Restrooms
- Climate controlled interior
- Handicap accessible



100 Hotel Road
Hershey, PA 17033
717-520-5888 (Main)
ChocolateSpa.com

THE SPA AT THE HOTEL HERSHEY®

Escape to *The Spa At The Hotel Hershey®* to indulge in a decadent chocolate package, try a seasonally inspired service, or experience a treatment from one of our signature collections. Choose from a variety of spa treatments including massage, facials, body scrubs and wraps, hydrotherapy, men's spa services, and salon services.



300 North Street
Harrisburg, PA 17120
717-787-6997 (Main)
Email: RA-PHGROUPS@PA.gov
www.statemuseumpa.org

THE STATE MUSEUM OF PENNSYLVANIA

The State Museum of Pennsylvania in Harrisburg, the official museum of the Commonwealth, is a great place for exploration, fun, and discovery. On a trip to the museum, encounter a giant chick, meet a family of Coelophysis dinosaurs, or bump into a huge mastodon. Hike among the bear, porcupine, elk, deer, and other creatures of Mammal Hall. Uncover salamanders and snakes; spot eagles and woodpeckers. Gaze upon the stars in the museum's Planetarium sky. Follow Pennsylvania's Native Americans throughout time. March into the Civil War era and see remnants of its greatest battle. Cruise past our antique cars or buzz around our planes. Feed your passion for art. It's All About Pennsylvania! Group rates available.



NOTES: _____

ZOOAMERICA® NORTH AMERICAN WILDLIFE PARK

Visit ZooAmerica®, a year-round, 11-acre, walk through zoo adjacent to Hersheypark® in Hershey, PA. Stroll the tree-lined pathways and visit the indoor habitats to learn more about animals from five regions of North America. Whether you come to ZooAmerica or ZooAmerica comes to you, we have a wide range of educational opportunities for groups, including on-site programs, guided tours, animal encounters, outreach programs, seasonal activities, and more.



201 Park Avenue
Hershey, PA 17033
717-534-3391 (Main)
717-534-3151 (Fax)
Email: ZooAmerica@HersheyPA.com
ZooAmerica.com



GETTYSBURG NATIONAL MILITARY PARK MUSEUM & VISITORS CENTER

Explore Gettysburg with your group. The Gettysburg National Military Park Museum & Visitor Center is the official start to your group's Gettysburg visit.

- Begin with the Film, Cyclorama & Museum Experience.
- Tour the Battlefield: Enhance your group visit with a bus tour of the battlefield with a Licensed Battlefield Guide. Step onto hallowed ground and enrich your experience as your bus makes stops at some of the battlefield's most iconic locations.
- Take some time to shop and dine at the Museum & Visitor Center.
- Enjoy special group programs. Take your group close up and behind the scenes with an exclusive, after-hours look at the iconic Cyclorama painting.



1195 Baltimore Pike
Gettysburg, PA 17325
717-339-1246
Email: tnye@gettysburgfoundation.org
www.gettysburgfoundation.org



LEBANON VALLEY EXPO CENTER

Nestled in the valley of south-central Pennsylvania is an affordable option for your meeting or trade show needs. Conveniently located near major highways, restaurants, and local attractions, the Lebanon Valley Expo Center offers you the space you need with the appeal of small-town living. Our 75,000 square feet of exhibition space under eight connected venues provides great flexibility. You have the options of a large, medium or small event and the flexibility for break out space. If your requirements would be better suited for outdoor space, we offer 17,500 sq. ft. of open-sided barn space. We also have wash rack for animals. Need a dirt track for your event? We offer that as well, along with bleacher seating. We also offer on-site camper hookups with modern restroom and shower facilities.



80 Rocherty Road
Lebanon, PA 17042
717-273-3670 (Main)
Email: pkerwin@lebexpo.org
LebExpo.org

NOTES: _____



301 Linden Street
Columbia, PA 17512
844-847-4884 (Main)
717-684-5197 (Fax)
Email: groupsales@turkeyhill.com
TurkeyHillExperience.com

TURKEY HILL EXPERIENCE

Minutes from the Hershey area, Turkey Hill Experience features interactive exhibits about dairy culture, the story of Turkey Hill Dairy, and how ice cream and iced tea flavors are created. Experience what it's like to be a Turkey Hill Dairy ice cream maker for a day. Sit in our vintage milk truck, milk our mechanical cows, star in your own Turkey Hill commercial and enjoy unlimited free samples of select iced tea and ice cream products! In addition, we offer the Turkey Hill Taste Lab, where you can actually taste the virtual flavor you created during your experience and our Tea Discovery Class, where you learn from one of our tea experts about tea origins, aromas, and varieties. Taste Lab & Tea Discovery have limited seating, reservations are required, and a nominal additional fee applies. The Experience offers group pricing for 20 or more. Offering flexible hours, we will gladly open early or stay late as needed, with advanced notice.



950 Soldiers Drive
Carlisle, PA 17013
717-245-3972 (Main)
717-245-3067 (Fax)
Email:
usarmy.carlisle.awc.mbx.ahec-ves@mail.mil
ahec.armywarcollege.edu

U.S. ARMY HERITAGE & EDUCATION CENTER

The USAHEC is the premier research and archival facility for U.S. Army history and is dedicated to "Telling the Army Story ... one Soldier at a Time." The expansive campus includes the Visitor and Education Center, the U.S. Army War College Library, the U.S. Army Military History Institute, and the Army Heritage Trail. The Visitor and Education Center features the Soldier Experience Interactive Gallery, changing exhibits, and museum store. Ridgway Hall features the library and archives, an art gallery with exhibitions rotating annually, and additional changing exhibit spaces. The mile-long, outdoor Army Heritage Trail provides an immersive experience, allowing visitors to walk into different periods of history represented.



800 East Park Drive
Harrisburg, PA 17111
717-561-2800 (Main) • 717-564-2347 (Fax)
717-561-0080 (Sales)
Email:
megan.wilkinson@thecentralhotelharrisburg.com
TheCentralHotelHarrisburg.com

BEST WESTERN PREMIER THE CENTRAL HOTEL HARRISBURG/HERSHEY

The Central Hotel features over 18,000 square feet of flexible convention space, perfect for business meetings and social events alike! We feature 174 guest rooms, including several two-bedroom family suites. All of our spacious rooms feature large flat-screen TVs, microwaves, coffee makers, and refrigerators. Our guests enjoy the use of one of the area's largest indoor swimming pools, a game room, and fitness centers, as well as an on-site guest laundry facility. O'Reilly's Tap Room & Kitchen, our on-site restaurant offers Irish themed dishes, American classics, daily specials, and a large outdoor patio area. The Central Hotel, exceeding your expectations, not your budget.

- Guest Rooms: 174
- Driver/Tour Guide



NOTES: _____

CHOCOLATE EXPRESS HOTEL & SUITES HERSHEY

Ideal for groups visiting Hershey, the Chocolate Express Hotel & Suites is located off Rt 39, Hershey Road, next to the AACA Museum, just one mile from Hersheypark, Hershey's Chocolate World, Giant Center and Hersheypark Stadium. Make yourself at home in one of the 58 air-conditioned rooms featuring refrigerators and microwaves. Complimentary wired and wireless Internet access keeps you connected. Private bathrooms with shower/tub combinations feature deep soaking bathtubs. Conveniences include coffee/tea makers and sofa beds in some rooms, and housekeeping is provided daily. Self parking & bus parking is available onsite.



Hershey Road, Route 39
Hershey, PA 17033
717-583-5151 (Main)
Email: chandrakantmpatel18@gmail.com
chocolatexpresshershey.com

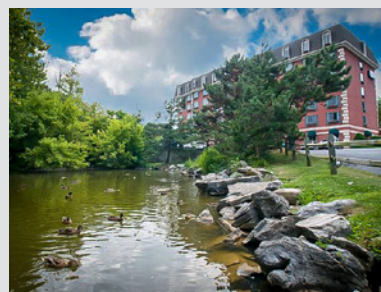


COMFORT INN AT THE PARK - HERSHEY

We are very accustomed to handling large student groups or sports team groups. We are focused on a family, kid-friendly atmosphere. The Comfort Inn at the Park is only two miles from Hersheypark® and about 45 minutes from the Gettysburg and Lancaster areas.

- Guest Rooms: 125

Choicehotels.com: search for hotel code PA107



1200 Mae Street
Hummelstown, PA 17036
717-566-2050 (Main)
717-566-8656 (Fax)
Email: Debbie.Toomey@dhotelgroup.com
ChoiceHotels.com



COMFORT SUITES HUMMELSTOWN-HERSHEY

At our Comfort Suites® hotel, you'll find everything you need to create your perfect stay. Our large contemporary suites have plenty of space for you to spread out and prepare for the next day. Each suite features microwaves, refrigerators, coffee makers, hair dryers, work desks, flat-screen TVs, pillow-top mattresses, irons with ironing boards, and sofa sleepers. Keep your electronic devices charged with the recharge device including AC and USB outlets provided in all guest rooms. Free full hot breakfast served daily from 6:30 AM to 9:30 AM.

- Guest Rooms: 80



320 Milroy Road
Hummelstown, PA 17036
717-566-3000 (Main)
717-566-3700 (Fax)
Email: michele@padutchhotels.com
CSHershey.com



NOTES: _____



515 East Chocolate Avenue
Hershey, PA 17033
717-533-1750 (Main)
Email: sbarscheski@shanercorp.com
Marriott.com/harca

COURTYARD BY MARRIOTT HERSHEY CHOCOLATE AVENUE

Our 120 guest rooms offer lavishly comfortable space to rest and work, with a state-of-the-art, in-room guest entertainment package, which includes 40 HD channels, an interactive channel guide, and internet TV equipped with Netflix, YouTube, Hulu, Crackle, and Pandora. Stop by our Bistro for breakfast, dinner, or after-dinner drinks. Our courtyard patio with an outdoor fireplace offers a delightful way to experience the great vibes of our modern, brand new property.

- Guest Rooms: 120



23 South Second Street
Harrisburg, PA 17101
717-920-1796 (Sales Office)
717-234-6797 (Fax)
Email: DOS@cpharrisburg.com
IHG.com/crowneplaza/hotels/us/en/harrisburg/mdtdt/hoteldetail

CROWNE PLAZA HARRISBURG/HERSHEY HOTEL

The newly renovated Crowne Plaza Harrisburg is located in the heart of downtown and walking distance to Restaurant Row. We are minutes from the PA State Capitol Complex. The hotel is easily accessible from Interstates 81 and 83 as well as the Pennsylvania Turnpike (I-76). The hotel is an ideal venue for group tours. Crowne Plaza — The Place to Meet!

- Guest Rooms: 260
- Wi-Fi
- Shuttle service to and from Amtrak® and Harrisburg International Airport (based on availability) fees may apply.



4 Terminal Drive
Middletown, PA 17057
717-944-1361 (Main)
Email: HIAFairfieldSales@shanercorp.com
Marriott.com/harfm

FAIRFIELD INN & SUITES BY MARRIOTT HARRISBURG INTERNATIONAL AIRPORT

Explore what the Harrisburg area has to offer from the new Fairfield Inn & Suites Harrisburg International Airport. Opened in the summer of 2018, our new state-of-the-art hotel is close to all the Harrisburg and Hershey attractions! Our spacious hotel rooms feature free Wi-Fi, plush bedding, and a guest room entertainment package which includes 40 HD channels, an interactive channel guide, and internet TV. Other amenities include a 24-hour business center, fitness center and a courtyard with a fire pit. Enjoy a complimentary hot breakfast buffet or end the day in our lobby bar with a drink and a bite to eat. We look forward to making you feel welcome here!

- Guest Rooms: 123



NOTES:

HAMPTON INN & SUITES HERSHEY

The Hampton Inn & Suites is conveniently located 1.5 miles from Hershey attractions. You will enjoy our spacious and newly renovated guest rooms and suites equipped with refrigerators and microwaves. We are within walking distance to three area restaurants, including the Hershey Pantry.

- Guest Rooms: 110
- On Site A/V Equipment Available



479 E. Chocolate Ave.
Hershey, PA 17011
717-533-8400
Email: emi.nissley@hilton.com
hersheysuites.hamptoninn.com

HAMPTON INN & SUITES BY HILTON HERSHEY NEAR THE PARK

The Hampton Inn & Suites by Hilton Hershey Near the Park features bright, spacious rooms and suites, well-lit work areas, flat-screen TVs, high-speed wireless internet, and more! Each morning guests and travelers will be able to enjoy a complimentary hot breakfast buffet or end their day with a work out in our on-site fitness room or unwind in our indoor heated swimming pool. Guests can also take advantage of the numerous point redemption options from our Hilton Honors program!

- Guest Rooms: 86
- **Comp Policy: Based on size and date of arrival**



195 Hershey Road
Hummelstown, PA 17036
717-566-3369 (Main) • 800-426-7866
717-566-3374 (Fax)
Email: amanda.w@canonhm.com
HersheyNearTheParkSuites.HamptonInn.com

HAMPTON INN AND SUITES HARRISBURG NORTH

Welcome to the Hampton Inn and Suites Harrisburg North. Our hotel is located right off Interstate 81 providing easy access to the Pennsylvania State Capitol, *Hersheypark*® attractions, Pennsylvania Farm Show Complex, Lancaster's Amish Country, and Gettysburg Battlefields. Enjoy the comforts of home, exceptional service, and attention to detail when staying with us. Relax in our indoor pool, workout in our extensive fitness center, check emails in our business center, or grab a snack in our Suite Shop. Complimentary local newspaper, Wi-Fi, local calls, plenty of parking and a full breakfast buffet are part of the benefits of staying with us. Don't forget that we are part of the Hilton Honors Program, too.

- Guest Rooms: 106
- **Comp Policy: Based on size of group and date of arrival**



30 Capital Drive
Harrisburg, PA 17110
717-540-0900 (Main)
717-540-0930 (Fax)
Email: ccompton@titanhotelgroup.com
HarrisburgNorthSuites.HamptonInn.com

NOTES: _____



4230 Union Deposit Road
Harrisburg, PA 17111
717-545-9595 (Main)
Email: Amy.anderson3@hilton.com
HarrisburgEast.HamptonInn.com

HAMPTON INN BY HILTON HARRISBURG/HERSHEY EAST

Refined and refreshed guest room renovation and new meeting space completed in 2020. All guest rooms and baths will feature new contemporary carpet and draping, stylish wall coverings, improved lighting, glass shower, granite countertops, and cozier furniture. Please contact the hotel directly to discuss the new meeting space. As you experience the friendly and efficient staff, enjoy our complimentary Wi-Fi, parking, hot breakfast buffet, and fitness center. The hotel is across the street from numerous restaurants and shopping. Discover a hotel that is convenient to everything in Harrisburg and Hershey. Don't forget that Lancaster and Gettysburg are just a short drive away. Located right off exit I-83, near I-81 and PA Turnpike (I-76).

- Guest Rooms: 143
- **Comp Policy: Negotiated per tour or event**



325 University Drive
Hershey, PA 17033
717-533-3311 (Main)
1-866-726-3387 (Sales Office)
Email: Meetings@HersheyPA.com
HersheyMeetings.com

HERSHEY LODGESM

One of Pennsylvania's Largest Convention Resorts, *Hershey Lodge* is a warm and welcoming state-of-the-art meetings venue with unsurpassed convention services and more than 100,000 sq. ft. of flexible meeting space. At *Hershey Lodge*, everything is designed to make your meeting easy, exciting, and extremely successful. We also invite you and your group to explore Hershey and the wonderful variety of venues and activities we offer to tour groups of all interests and sizes.

- Guest Rooms: 665



1200 Sweet Street
Hummelstown, PA 17036
888-442-9980
Email:
HersheyparkCampingResort@HersheyPA.com
HersheyparkCampingResort.com

HERSHEYPARK[®] CAMPING RESORT

Experience year-round camping on 55 acres with more than 300 open and shaded sites, or rent one of our 50 log and deluxe cabins. Amenities include two swimming pools and a wading pool for kids, family fun center, seasonal activities, two playgrounds, self-service laundry, and country store. The Resort provides free Wi-Fi services.



NOTES: _____

HILTON GARDEN INN HARRISBURG EAST

The Hilton Garden Inn Harrisburg East is centrally located to Hershey and Harrisburg attractions. All our rooms are equipped with 42" flat-screen TVs, Keurig coffee makers, microwaves, and mini-fridges. We are the ideal place for just a night away or multiple nights to visit the many area attractions in Hershey and Harrisburg. Please contact our Sales Department for assistance in planning your stay.

- Guest Rooms: 126



3943 TecPort Drive
Harrisburg, PA 17111
717-635-7299 (Main)
717-635-7298 (Fax)
Email: mdtha-salesadm@hilton.com
HarrisburgEast.HGI.com

HILTON GARDEN INN HERSEY

The perfect place for group tours, the Hilton Garden Inn Hershey offers full-service dining and bar, made-to-order breakfast at a discounted group rate, on-site meeting space for group gatherings, and Hilton Honors points for booking. Just minutes from all *Hersheypark*® attractions but nestled in the quiet area of Hummelstown. With 112 well-appointed guest rooms with multiple sleeping arrangements, you are sure to find the perfect fit for your group here with us.

- Guest Rooms: 112



550 East Main Street
Hummelstown, PA 17036
717-566-9292 (Main) • 877-782-9444
717-566-9934 (Fax)
Email: mdthe-salesadm@hilton.com
Hershey.HGI.com

HILTON HARRISBURG

Located in Downtown Harrisburg, the Hilton is just two blocks from the PA State Capitol and 15 minutes from Hershey attractions. Expansive meeting and event space, intimate dining rooms, and luxurious overnight accommodations with panoramic views of the river and skyline set the stage for a memorable experience. Additionally, two contemporary restaurant options offer something for everyone. Ad Lib Craft Kitchen & Bar with small plates and wood stone oven favorites and a 16 ft. fireplace is a great spot for a casual get together. 1700 Steakhouse provides a fine dining experience with Midwest beef, sustainable seafood, and a Wine Spectator Award-winning wine list.

- Guest Rooms: 341
- **Comp Policy: 1 room per 50 rooms**



1 North Second Street
Harrisburg, PA 17101
717-233-6000 (Main)
717-233-6830 (Fax)
Email: MDTHH-SALESADM@hilton.com
Harrisburg.Hilton.com

NOTES: _____



4021 Union Deposit Road
Harrisburg, PA 17109
717-561-8100 (Main)
717-561-1357 (Fax)
Email: Rachel.Mee@twintierhospitality.com
HIExpress.com/harrisburgeast

HOLIDAY INN EXPRESS HARRISBURG EAST – HERSHEY AREA

Enjoy newly renovated guest rooms at Holiday Inn Express located less than ten miles from the PA Farm Show Complex, *Hersheypark*®, PA State Capitol, Downtown Harrisburg, and Commonwealth offices. Complimentary amenities include a hot breakfast buffet, 24/7 coffee located in the lobby, Wi-Fi, parking, fitness center, business center, in-room refrigerator and microwave, guest laundry, seasonal outdoor pool, and in-room safe. Friendly and knowledgeable guest service agents make groups immediately feel welcome!

- Guest Rooms: 114



7744 Linglestown Road
Interstate 81, Exit 77
Harrisburg, PA 17112
717-540-8400 (Main)
717-540-5553 (Fax)
Email: Michele@padutchhotels.com
HarrisburgHolidayInn.com

HOLIDAY INN EXPRESS HARRISBURG NE-HERSHEY

Stay Inspired! Our beautiful hotel offers comfortable guest rooms with spacious work areas, microwaves, refrigerators, iron/ironing boards, hair dryers, and complimentary internet access. Amenities include an expanded business center, complimentary breakfast with rotating hot items, 24-hour fitness center, indoor pool, and hot tub. Our convenient location just off exit 77 of I-81 provides easy access to the entire Hershey Harrisburg Region

- Guest Rooms: 80
- **Comp Policy: 50% off group rate. Driver/Tour Guide**



815 South Eisenhower Boulevard
Middletown, PA 17057
717-939-1600 (Main) • 800-719-5540
717-939-2069 (Fax)
Email: johnlewis@dhotelgroup.com
HolidayInn.com/harrisburge

HOLIDAY INN HARRISBURG EAST

Looking for hotels near Hershey or Harrisburg, PA? The smoke-free Holiday Inn® Harrisburg East offers a location that is just minutes from the attractions of Hershey, Downtown Harrisburg, and Amish Country. The PA Farm Show Complex & Expo Center, The National Civil War Museum, *Giant Center*™, and *Hersheypark*® Stadium are all nearby. Don't miss terrific golf courses, antique cars, and new Hershey museums. Enjoy athletic games with the *Hershey Bears*® and Harrisburg Senators. In addition to a state-of-the-art board room and high-functioning hospitality room, we have a 2,200-sq. ft. ballroom available for pre-function space and numerous amenities: free high-speed Wi-Fi access, full-service restaurant and lounge, indoor pool, and fitness area.

- Guest Rooms: 175



NOTES: _____

HOLIDAY INN HARRISBURG-HERSHEY

The Holiday Inn Harrisburg/Hershey hotel is a full-service property providing guest rooms and accommodations in Central Pennsylvania. Grantville, PA, conveniently located off Interstate 81, is just minutes from both Hershey and Harrisburg, and all their attractions like *Hersheypark*®, Hollywood Casino at Penn National Race Course, Fort Indiantown Gap, AACA Museum, The National Civil War Museum, and the PA State Capitol. We are also within a one-hour drive to both Lancaster and Gettysburg. Our facility with an indoor pool, Jacuzzi, fitness room, and an outdoor pool provides entertainment for everyone. Enjoy casual dining in our two restaurants: The Great American Grille and the Winner's Circle Saloon.

- Guest Rooms: 200



604 Station Road
Grantville, PA 17028
717-469-0661 (Main)
717-469-7755 (Fax)
Email: chasemalone@stayholiday.com
StayHoliday.com

HOME2 SUITES BY HILTON HARRISBURG NORTH

New Hilton hotel with a great location by the Shoppes at Susquehanna. Perfect suites for a one-night stay or an extended stay in the Harrisburg/Hershey area. Convenient to shopping and restaurants for any evening plans. Next to Cracker Barrel at Exit 69 off of I-81 at Progress Avenue. Scenic location on top of the hill with a beautiful view of the Blue Ridge mountains.



2450 Brindle Drive
Harrisburg, PA 17110
717-545-5300 (Main)
717-545-5301 (Fax)
Email: klansinger@gospringwood.com
Home2Harrisburg.home2suitesbyhilton.com

HOMWOOD SUITES BY HILTON HARRISBURG EAST

See why so many travelers make Homewood Suites by Hilton – Harrisburg East (Hershey area) their hotel of choice when visiting the Harrisburg/Hershey area. We strive to make a great experience for our guests by exceeding expectations. Our all suite accommodations and outstanding hospitality makes for a winning combination guaranteed to provide that “just like home” atmosphere, whether staying for a night, a week or a month!



3990 TecPort Drive
Harrisburg, PA 17111
717-909-4663
Email: Alishia.Mull@hilton.com
harrisburgeast.homewoodsuites.com

NOTES: _____



100 Hotel Road
Hershey, PA 17033
1-866-726-3387 (Sales Office)
Email: Meetings@HersheyPA.com
HersheyMeetings.com

THE HOTEL HERSHEY®

Breathtaking elegance and uncompromising guest service make *The Hotel Hershey* the perfect venue for re-focusing the creative energies that lead to successful meetings. *The Hotel Hershey* offers a timeless setting with more than 25,000 sq. ft. of meeting space, 276 deluxe guest rooms including 10-, four- and six-bedroom cottages, modern amenities, natural lighting in all function space, and uncompromising service. Enjoy access to three distinctive golf resort courses and *The Spa At The Hotel Hershey®* featuring traditional and signature treatments.

- Guest Rooms: 276



990 Eisenhower Boulevard
Harrisburg, PA 17111
717-939-8000 (Main)
717-939-0500 (Fax)
Email: lq1032gm@laquinta.com
LaQuintaHersheyHarrisburgAirport.com

LA QUINTA INN & SUITES HARRISBURG AIRPORT HERSHEY

Our hotel is located less than 10 minutes from Harrisburg International Airport. All 110 rooms are completely nonsmoking. Free breakfast includes egg and sausage patties. Easy entrance on and off. Gilligan's Restaurant is located directly across the street. McDonald's and diner within walking distance. Downtown Harrisburg less than 10 minutes away. Centrally located. *Hersheypark®* less than 20 minutes from the hotel. Harrisburg Mall less than five minutes.

- Guest Rooms: 110



2250 Kohn Road
Harrisburg, PA 17110
717-671-9300 (Main)
Email: ccompton@titanhotelgroup.com
Marriott.com/harlg

RESIDENCE INN HARRISBURG NORTH

Travel like you live at our brand new all-suites Marriott hotel! Each room has a full kitchen and includes complimentary breakfast, Wi-Fi, and complimentary mixer (during select nights). Enjoy a drink at our full bar and get cozy by the fire in our outdoor courtyard. The Residence Inn & Suites Harrisburg North is centrally located to the Pennsylvania State Capitol Complex, PA Farm Show Complex & Expo Center, *Hersheypark®*, and other surrounding attractions.

- Guest Rooms: 123

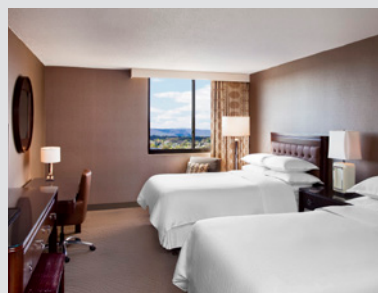


NOTES: _____

SHERATON HARRISBURG HERSHEY

For our motorcoach travelers, the Sheraton offers convenient on-site coach parking, 24-hour gift shop, an indoor/outdoor pool, large banquet rooms for group meals, a warm and welcoming staff, and many shops within walking distance. Our location is convenient for hub and spoke tours.

- Guest Rooms: 347
- **Comp Policy: Negotiated per tour**

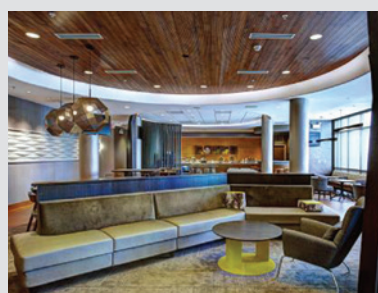


4650 Lindle Road
Harrisburg, PA 17111
717-564-5511 (Main)
717-564-2476 (Fax)
Email: Kim.Masterson@marriott.com
marriott.com/harsi

SPRINGHILL SUITES BY MARRIOTT HARRISBURG HERSHEY

SpringHill Suites by Marriott Harrisburg / Hershey is centrally located to Pennsylvania's State Capitol Complex, PA Farm Show Complex & Expo Center, *Hersheypark*®, *Hershey's Chocolate World* Attraction, and surrounding destinations such as Lancaster's Amish Country and Gettysburg battlefields. You'll find plenty of room to relax in our generous suites, featuring upgraded West Elm Collection furniture, 37" flat-screen LCD HD TVs, microwave, mini-fridge, and free Wi-Fi. Revitalize each morning with our new breakfast buffet or end your evening with a relaxing cocktail at our Sky Lounge. We are proud to present a 100% smoke-free policy. Experience SpringHill Suites by Marriott Harrisburg Hershey.

- Guest Rooms: 118



15 Capital Drive
Harrisburg, PA 17110
717-540-5100 (Main)
717-540-5190 (Fax)
Email: lpeate@titanhotelgroup.com
Marriott.com/haret

STAYBRIDGE SUITES HARRISBURG-HERSHEY

Freshly renovated studio, one-bedroom, and two-bedroom/two-bathroom suites are available in a home-like atmosphere, with a fully equipped kitchen in every room! Complimentary daily hot breakfast buffet, plus complimentary light dinner and beverages three evenings per week are provided in this upscale extended-stay hotel. We insist you take a break from the travel norm. Enjoy complimentary high-speed internet, free parking, business center, guest laundry facilities, BBQ pavilion, plus an indoor pool, fitness room, and IHG Rewards points. Located off I-81 near I-83, and convenient to the PA State Capitol and Downtown Harrisburg, the Staybridge Suites sits adjacent to the PA Farm Show Complex.

- Guest Rooms: 126



920 Wildwood Park Drive
Harrisburg, PA 17110
717-233-3304 (Main)
717-233-3305 (Fax)
Email: k.lennon@guestsinc.com
Staybridgesuites.com/harrisburgpa

NOTES: _____



450 Friendship Road
Harrisburg, PA 17111
717-558-0200 (Main)
717-558-0700 (Fax)
Email: Sarah.Tatanish@marriott.com
Marriott.com/HARTS

TOWNEPLACE SUITES BY MARRIOTT HARRISBURG/HERSHEY

Designed for the extended stay guest, our newly remodeled, spacious suites offer all the comforts of home. Every suite has a full kitchen, flat screen TV, and daily housekeeping. Unwind in our indoor pool and hot tub or stay fit in our exercise room with state-of-the-art equipment. Complimentary breakfast served each morning.

- Guest Rooms: 107 — Queen Suites 43, Queen with Sleeper 32, 1-Bedroom Suites 5, Suites with 2 Queens and Sleeper 11, 2-Bedroom Suites 16



P.O. Box 6658
Harrisburg, PA 17112
717-657-9658 (Main)
717-652-9476 (Fax)
Email: ckelly@lowees.com
Innovativecoaches.com

LOWEE'S GROUP TOURS/INNOVATIVE COACHES

We have been in business for over 30 years and pride ourselves on providing an exceptional event. We offer services for every age group from students to seniors. Our tours and events are specially designed to create a unique experience. Groups are our Specialty! Since 1984, we have provided the very best in tours and service in the business. As thousands of satisfied groups will agree, you are in good hands with us. Need a guide, motorcoach, or a great Heart of Pennsylvania Tour? We've got you covered! At Lowee's Group Tours and Innovative Coach, we understand our job is to make you look good!



ELITE COACH

For over 30 years, Elite Coach has provided worry-free transportation services to businesses, schools, groups, clubs, families, and individuals. Our specialties include local and long-distance travel, pier/airport transfers, corporate/group/wedding/event shuttle services, and tour planning services. Our fleet offers seating for 26, 38, and 56 passengers, featuring plush reclining seats, climate control, DVD, restrooms, 120 V outlets, and Wi-Fi. Elite Coach's professional drivers take pride in making every trip a great experience for our passengers. We strive to exceed the expectations of every customer. One trip at a time.



1685 West Main Street
Ephrata, PA 17522
717-733-7710 (Main)
800-722-6206
Email: info@elitecoach.com
EliteCoach.com

NATIONAL CHARTER BUS NEW YORK

With a charter bus, minibus, shuttle, or motorcoach from National Charter Bus, your group will be able to travel in and around Harrisburg with ease. Explore the city on your own time with the comfort of luxury bus amenities, exceptional customer service, and gracious drivers. Travel to Harrisburg from cities such as New York, Philadelphia, Newark or Washington DC. Contact us for a free, no-obligation trip quote.



15 Division St., 5th Fl
New York, NY 10002
718-233-4974
Email: hala@nationalbuscharter.com

WOLF'S BUS LINES

Success comes from experience. Let us create yours. Wolf's has been in business for over 75 years. Wolf's takes care of your group like they are one of our own. Rent a motorcoach from us for your next event! Let us take care of the planning and worrying. We help you every step of the way. Our knowledgeable, friendly staff can accommodate the special interests, needs and specifications of your meeting and convention for transportation and touring. Wolf's operates a fleet of luxury motorcoaches with seating, amenities, and accessibility for your needs, wants, and budget. All our equipment is modern, reliable, and equipped for your comfort! No group is too big or small.



200 Old U.S. Route 15
York Springs, PA 17372
717-528-4125 (Main) • 800-692-7804
717-528-4127 (Fax)
info@wolfsbus.com
WolfsBus.com

NOTES: _____



THE BEARS' DENSM

Catch all the sports action on a 7' x 12' video wall and more than 39 HDTVs in a casual, hockey-themed atmosphere. Whatever the season, *The Bears' Den* at *Hershey LodgeSM* keeps you in the game.

Hershey Lodge
325 University Drive
Hershey, PA 17033
717-534-8601 (Main)
DiningInHershey.com



THE CHOCOLATIER RESTAURANT, BAR + PATIO

The Chocolatier serves up fun fare with a hint of chocolate. The space features past and present pieces from the *Hersheypark[®]* ride collection, one-of-a-kind views of neighboring attractions, and a second-story patio and bar. *The Chocolatier* celebrates the life and legacy of our founder, Milton S. Hershey, by continuing to bring people together for happiness, fun, and of course, chocolate.

Hersheypark
100 W Hersheypark Dr
Hershey, PA 17033
717-508-1999 (Main)
DiningInHershey.com



THE CIRCULAR[®]

Dine in a historic venue at *The Circular*, built by Milton S. Hershey himself. Enjoy iconic tastes with a refined flair, a full-service bar offering an extensive wine and cocktail list, and desserts made from an award-winning pastry chef all while dining in an environment that blends the best of classic and modern.

The Hotel Hershey
100 Hotel Road
Hershey, PA 17033
717-534-8800 (Main)
DiningInHershey.com

NOTES:

COCOA BEANERY®

Specialty coffees, espresso, pastries, and lunch items are served. Hold a birthday, anniversary, or special event in the private party space at *Cocoa Beanery's* Research Boulevard location. Select a customized menu for your event and enjoy a private space for up to 12 guests, plus exclusive use of the entire restaurant space after operating hours.

Hershey LodgeSM
325 University Drive
Hershey, PA 17033

Research Boulevard
1215 Research Boulevard
Hummelstown, PA 17036
717-508-5986



DiningInHershey.com

DEVON SEAFOOD + STEAK

Get a taste of fresh at Devon Seafood + Steak. Comfortably upscale and refined, Devon provides the perfect atmosphere to enjoy everything from deliciously simple fish dishes to premium steaks and salads, plus an impressive wine cellar list and cocktail menu to complement your one-of-a-kind dining experience. Private dining space is also available. Outdoor dining available seasonally.



27 West Chocolate Avenue
Hershey, PA 17033
717-508-5460 (Main)
DiningInHershey.com

ENGLEWOOD BREWING

Grab lunch with fellow travelers, hold a special private event, try the craft brews, and take in a live concert all at The Englewood and Englewood Brewing. The brew pub tavern downstairs holds about 200 guests at tables and 2 long bars, as well as a patio that holds approximately 200 people seated. Catch a national or regional live concert, too, at the music venue that holds up to 500 standing! Groups can enjoy the Englewood Brewing brew pub restaurant and fresh craft beer with advance reservations before, and then go upstairs to The Englewood live music venue for a show! Call us to talk with us about your visit!

• **Comp Policy: Group Tour Leader + Bus Driver**



1219 Research Blvd.
Hummelstown, PA 17036
(717) 256-9480
Email: info@englewoodhershey.com
englewoodhershey.com

NOTES: _____



102 West Chocolate Avenue
Hershey, PA 17033
717-533-7159 (Main)
717-534-9124 (Fax)
Email: bill@feniccis.com
Feniccis.com

FENICCI'S OF HERSHEY

Hershey's oldest free-standing restaurant; a Hershey tradition since 1935! A local favorite for 86+ years. Featuring our famous DeAngelis sauces and our upside-down pizza. Our full menu of homemade Italian dishes features steak, seafood, pasta, and sandwich selections. Full menu offered all day and late night. Home to the stars of the Hershey Theatre. Fenicci's of Hershey is conveniently located on Chocolate Avenue across from The Hershey Story Museum on Chocolate Avenue. Dine on our outdoor patio overlooking the *Kissing Tower*SM and enjoy all that Downtown Hershey has to offer. We invest in Hershey because we believe in Hershey. Top rate on Trip Advisor & other sites. Featured in USA Today and Comcast Best of the City.



Hershey Lodge
325 University Drive
Hershey, PA 17033
717-534-8601 (Main)
DiningInHershey.com

FIRE & GRAIN®

Experience the energetic and engaging atmosphere of *Fire & Grain*®, featuring gathering tables, a fire wall, and a full-service bar. Enjoy an innovative breakfast and dinner menu of re-mastered comfort foods and cocktails perfect for breakfast with your family, dinner with friends, or cocktails with co-workers.



The Hotel Hershey
100 Hotel Road
Hershey, PA 17033
717-534-8800 (Main)
DiningInHershey.com

HARVESTSM

Experience farm-to-fork freshness at *Harvest*. With an ever-changing menu inspired by local and regional ingredients, you'll always get a delicious taste of something completely new. Plus, enjoy a variety of beverages including cocktails, wine, and micro-brews at the bar and an exciting and fun game room.

NOTES: _____

HARVEST SEASONAL GRILL & WINE BAR

Seasonally changing, farm-to-table restaurant. Progressive wine list.

- Can accommodate all food allergies and dietary restrictions (gluten, dairy, vegetarian)
- Chef-driven, made-from-scratch kitchen
- Private dining space available in a polished, casual atmosphere
- Brunch is offered Saturday 11 AM - 3 PM and Sunday 10 AM - 3 PM



2625 Brindle Drive
Harrisburg, PA 17110
717-545-4028 (Main)
Email:
harrisburg@harvestseasonalgrill.com
HarvestSeasonalGrill.com

HERSHEY® COUNTRY CLUB

Hershey® Country Club is an ideal setting for celebrating a wedding, hosting a special event, reunion, golf outing, or enjoying a casual meal. Hershey Country Club offers indoor and outdoor venues surrounded by panoramic views that serve as an exquisite backdrop for your treasured event. We also employ full service catering and provide a menu for every taste and occasion. Our extraordinary service will make every moment richer and every memory sweeter. Private events at Hershey Country Club are offered to Members and non-members alike.



1000 East Derry Road
Hershey, PA 17033
717-533-2360 (Main)
Email: gweaver@HersheyPA.com
HersheyCountryClub.com

HOULIHAN'S RESTAURANT + BAR

Discover your next-favorite meal at Houlihan's of Hershey. Stylishly modern and laid back, Houlihan's serves up fresh, from-scratch dishes, handcrafted cocktails, and always delicious appetizers perfect for whatever dining experience you're craving. Outdoor dining available seasonally.



27 West Chocolate Avenue
Hershey, PA 17033
717-534-3110 (Main)
DiningInHershey.com

NOTES: _____



IBERIAN LOUNGESM

Enjoy signature chocolate cocktails and delicious lite fare by the fireplace in this warm and inviting lounge.

The Hotel Hershey
100 Hotel Road
Hershey, PA 17033
717-534-8800 (Main)
DiningInHershey.com



REVELRYSM

Revelry serves up classic and contemporary chophouse fare with premium cuts and the largest wine & spirits list in the house. Settle into our dining room, claim a stool at the bar, or venture out to the rooftop patio during the warmer months, and savor a spirited evening of fine food and drinks.

Hershey Lodge
325 University Drive
Hershey, PA 17033
717-534-8601 (Main)
DiningInHershey.com



TREVI 5SM

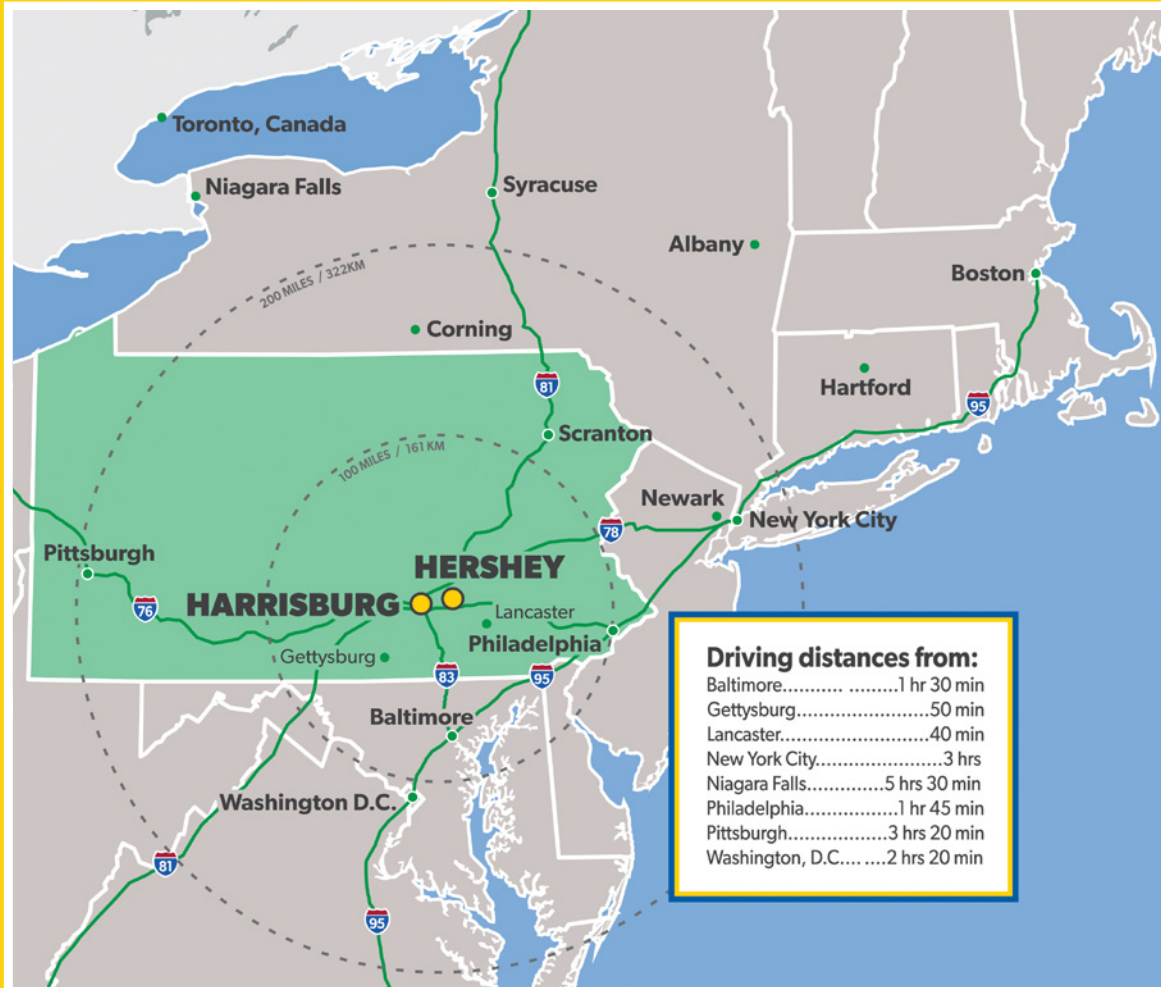
Indulge your senses in authentically-modern Italian cuisine at Trevi 5. The clean, Mediterranean ambiance, five-flavor food combinations, and exceptional service will envelop you in the best of Italy – all while being wrapped up in the sweetness and hospitality of Hershey. This resort casual space also has a private dining area which can seat up to 14 guests. Outdoor dining available seasonally.

The Hotel Hershey
100 Hotel Road
Hershey, PA 17033
717-534-8800 (Main)
DiningInHershey.com

NOTES:

Getting Here

The Hershey Harrisburg Region is within a few hours traveling distance of many major cities and is easily accessible by the Pennsylvania Turnpike, Amtrak's® Keystone Service, and Harrisburg International Airport (MDT), which offers nearly 70 flights a day. For the most up-to-date information, go to FlyHIA.com.



Fly to Harrisburg International Airport (MDT) Nonstop from

Atlanta – Delta
Boston – American
Charlotte – American
Chicago – American/United
Dallas/Fort Worth – American
Detroit – Delta

Fort Lauderdale – Allegiant
Myrtle Beach – Allegiant
Nashville – Allegiant
Punta Gorda/Fort Myers – Allegiant
Orlando – Frontier
Orlando/Sanford – Allegiant

Philadelphia – American
Sarasota/Bradenton – Allegiant
Tampa/St. Petersburg – Allegiant
Washington D.C. – United

Visit **HERSHEY & HARRISBURG**