A rocket launch at dusk. The rocket is ascending vertically, leaving a large, billowing plume of white and orange smoke. The scene is set against a dark blue sky. In the foreground, there is a body of water reflecting the light from the launch. The overall atmosphere is dramatic and industrial.

SESSION:

DESIGNING FOR THE FUTURE: AN UPDATE FROM HOUSTON'S GREEN SPACES



SARAH NEWBERY

DIRECTOR OF PARKS &
GREENSPACE, KINDER
FOUNDATION



SHELLYE ARNOLD

PRESIDENT, MEMORIAL
PARK CONSERVANCY



CLAUDIA GEE VASSAR

PRESIDENT, HOUSTON
BOTANIC GARDEN



ANNE OLSON

PRESIDENT, BUFFALO
BAYOU PARTNERSHIP

A scenic view of the Buffalo skyline, featuring several prominent skyscrapers, with a lush green park and the Buffalo Bayou river in the foreground. The sky is blue with scattered white clouds. The text 'Buffalo Bayou Partnership' is overlaid in white, sans-serif font across the middle of the image.

Buffalo Bayou Partnership

Tourism Summit

April 25, 2019



About buffalo bayou partnership



**BUFFALO BAYOU
PARTNERSHIP**

- Established in 1986, Buffalo Bayou Partnership (BBP) is the non-profit responsible for revitalizing and transforming Buffalo Bayou, Houston's most significant natural resource.
- Board members, approved by the Mayor and the County Judge, represent civic, environmental and governmental interests.
- Thanks to the generous support of foundations, corporations, individuals and government agencies, BBP has raised and leveraged more than \$200 million for the redevelopment of the waterfront.

THREE SECTORS – 10 MILES





Sesquicentennial Park



Sabine Promenade



Downtown Trail

Buffalo bayou park
You've probably...



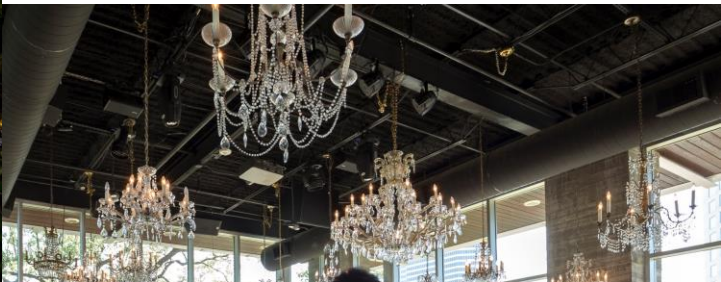
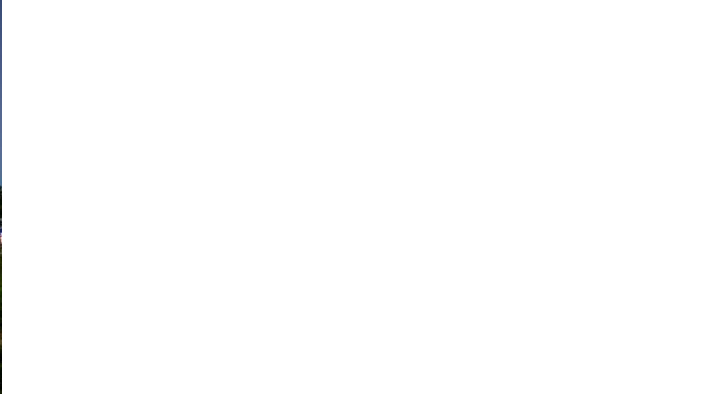
Taken a bike ride



Attended an event at
Eleanor tinsley park

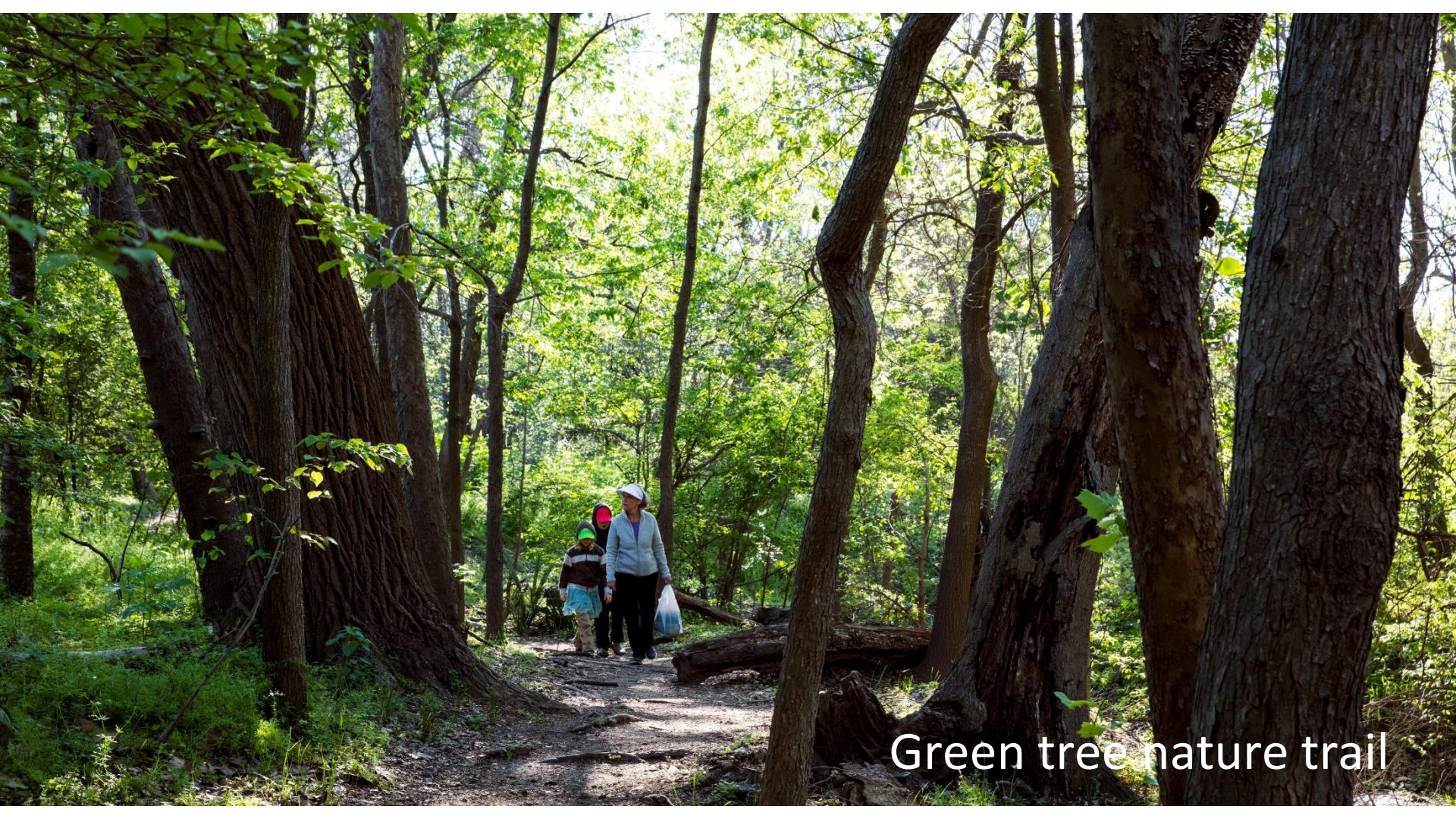


PLAYED WITH YOUR DOG
AT Johnny steele
dog park



Eaten AT The dunlavy

Buffalo bayou park:
But there's More
to discover



Green tree nature trail



Bat colony at Waugh Drive Bridge



Lunar cycle lighting at night



Buffalo Bayou Park Cistern

Public art

LISTEN



Anthony Shumate – monumental moments

Public art



New monuments for new cities



Sunset Coffee Building



Sunset Coffee Building

We have plans for more
recreational and cultural
opportunities

Downtown Trails



BBP DOWNTOWN TRAIL PROPOSAL

- | | | |
|--|---|---|
|  BBP Projects |  Other Trail Projects |  On-Street Connection |
|  HPB Project |  Existing Trail | |



Buffalo bayou east

Activity nodes





AUTHENTICITY

Utilizing existing assets to create unique park spaces that reflect the cultural and industrial legacy of the East Sector.



CONNECTIVITY

Rethinking how parks and neighborhoods interact, activating and connecting the waterfront and surrounding communities.



INCLUSIVITY

Creating a model where investment in open space can serve as a catalyst for inclusive growth and neighborhood revitalization.



The Silos



Turkey bend



Sewage treatment facility



A group of approximately 15 people are seated on a white pontoon boat with a green and white striped canopy. The boat is on a canal, with a concrete bridge structure and lush green trees in the background. The scene is brightly lit, suggesting a sunny day. The boat has a logo on its side that reads "BUFFALO BAYOU PARTNERSHIP".

Hop aboard!

Join buffalo bayou partnership
as we continue our journey to
revitalize and transform
Houston's greatest natural resource.

Camp Logan Entrance into Memorial Park



Memorial Park's Eastern Glades, Coming 2020



Memorial Park's Land Bridge, Coming 2022



Memorial Park's Land Bridge, Coming 2022





HOUSTON BOTANIC GARDEN

April 25, 2019

HOUSTON TOURISM SUMMIT



HOUSTON



4TH LARGEST CITY IN US



GLOBAL ECONOMY



2.2+ MILLION PEOPLE

25.1% White

22.4% Black

44.3% Hispanic

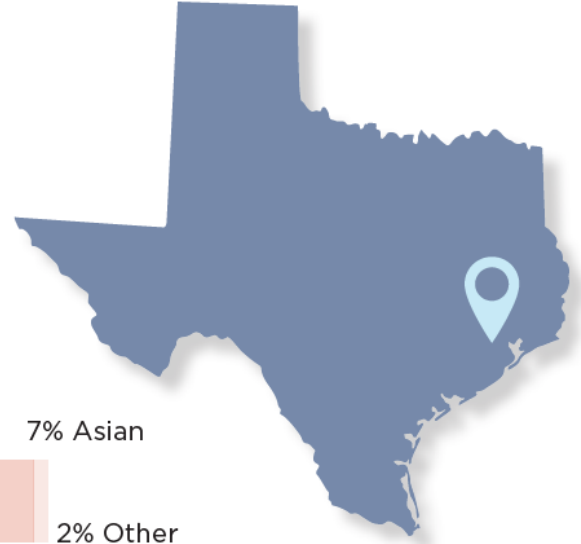
7% Asian



627 SQUARE MILES



MORE THAN 90 LANGUAGES SPOKEN



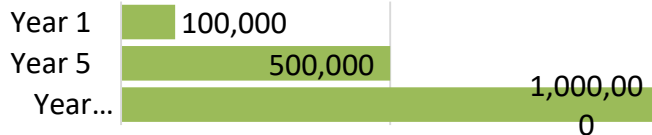
BOTANIC GARDENS IN THE UNITED STATES



BOTANIC GARDENS: Pre-eminent Cultural Destinations



Houston Visitor Projections

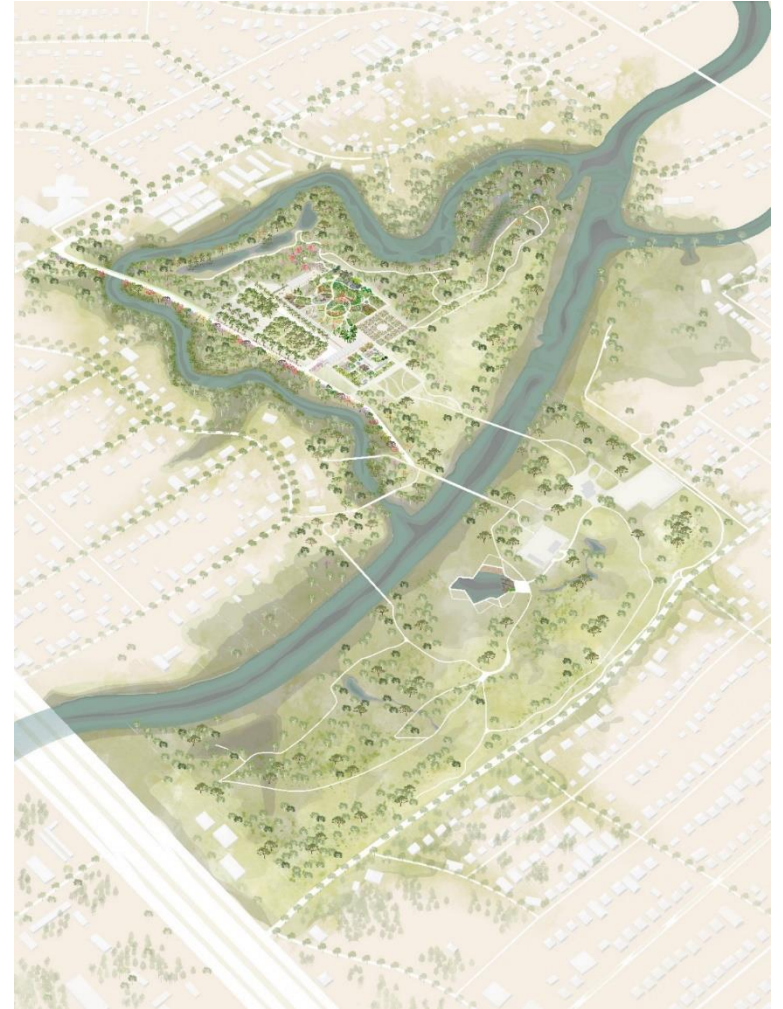


WHAT IS A BOTANIC GARDEN?



HBG MISSION

The mission of the Houston Botanic Garden is to enrich life through discovery, education, and the conservation of plants and the natural environment.



ENJOYMENT AND SERENITY



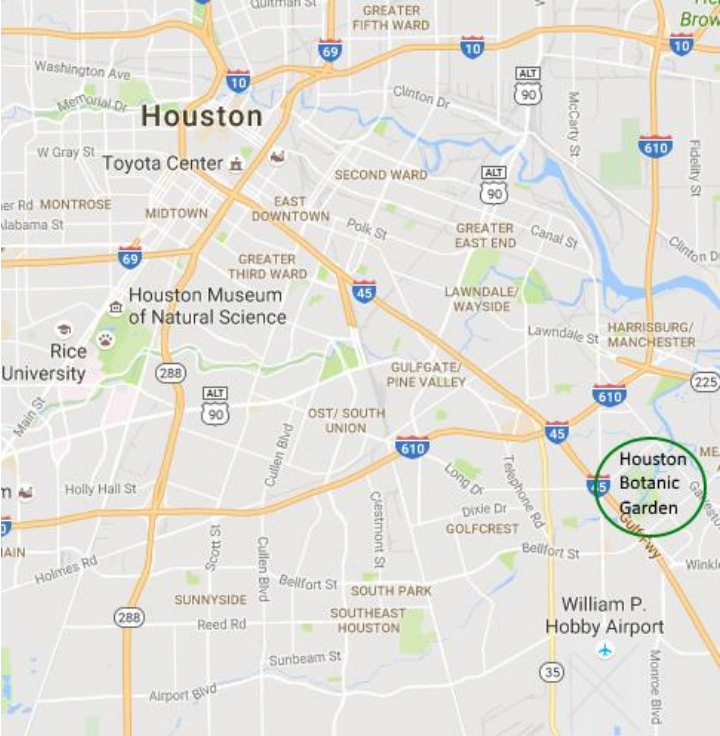
EDUCATION & DISCOVERY



RESEARCH & CONSERVATION



SITE



SITE

DOWNTOWN



PHASE I: BOTANIC BEGINNINGS

GARDENS

GLOBAL COLLECTION GARDEN

*Arid Garden Water Feature
Alcove Seating w/ Shade*

EDIBLE GARDEN

CHILDREN'S DISCOVERY GARDEN

PINE GROVE

WETLANDS GARDEN

COASTAL PRAIRIE

BOTANIC BOULEVARD

COMMUNITY GARDEN

GUEST EXPERIENCE

ORNAMENTAL ENTRY GATE

ENTRY VEHICULAR BRIDGE

WELCOME PAVILION

EVENTS LAWN

EVENTS PLAZA

PARKING LOT

WELCOME PLAZA W/ WATER

FEATURE

INFRASTRUCTURE

PEDESTRIAN BRIDGE IMPROVEMENTS

SITE & ACCENT LIGHTING

SIGNAGE

GRADING, MITIGATION, DETENTION

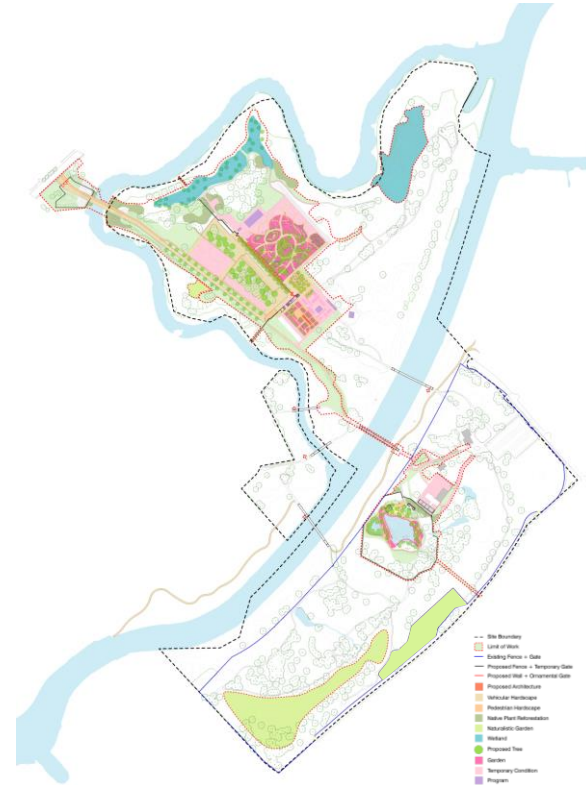
UTILITIES

RENOVATED CLUBHOUSE FOR

ADMINISTRATION & EDUCATION

SOUTH AND NORTH O&M CENTERS

NURSERY & TREE FARM



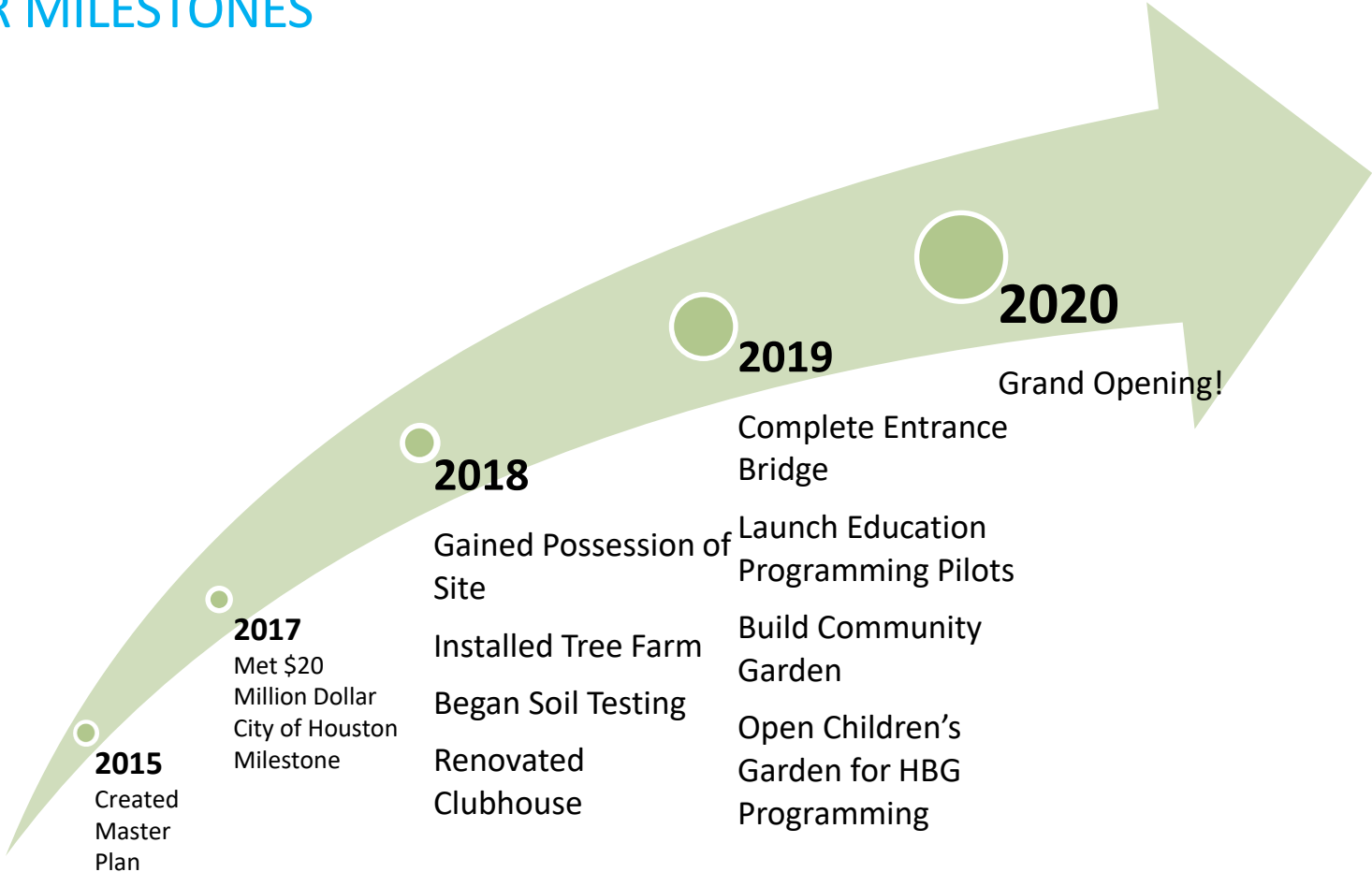
STORMWATER WETLAND DETENTION PONDS



COASTAL PRAIRIE



MAJOR MILESTONES



A vibrant, stylized illustration of a garden path. The scene is filled with lush greenery, including large trees with dark green leaves and various colorful flowers in shades of pink, red, purple, and yellow. A winding path leads through the garden, and several white silhouettes of people are scattered throughout, suggesting a family-friendly environment. The overall style is bright and cheerful, with a focus on natural elements and human interaction.

SEE YOU IN
THE
GARDEN IN
2020!