

# Jesse H. Jones Hall for the Performing Arts

615 Louisiana St  
Houston, TX 77002



## TECHNICAL INFORMATION

UPDATED  
February 2020

<http://www.houstonfirsttheaters.com/JonesHall.aspx>

## ADDRESSES

<b>Main</b>	615 Louisiana St Houston, TX 77002
<b>Postal</b>	615 Louisiana St, Suite 101 Houston, TX 77002
<b>Stage Door and Loading Docks</b>	Texas St between Louisiana St and Milam St

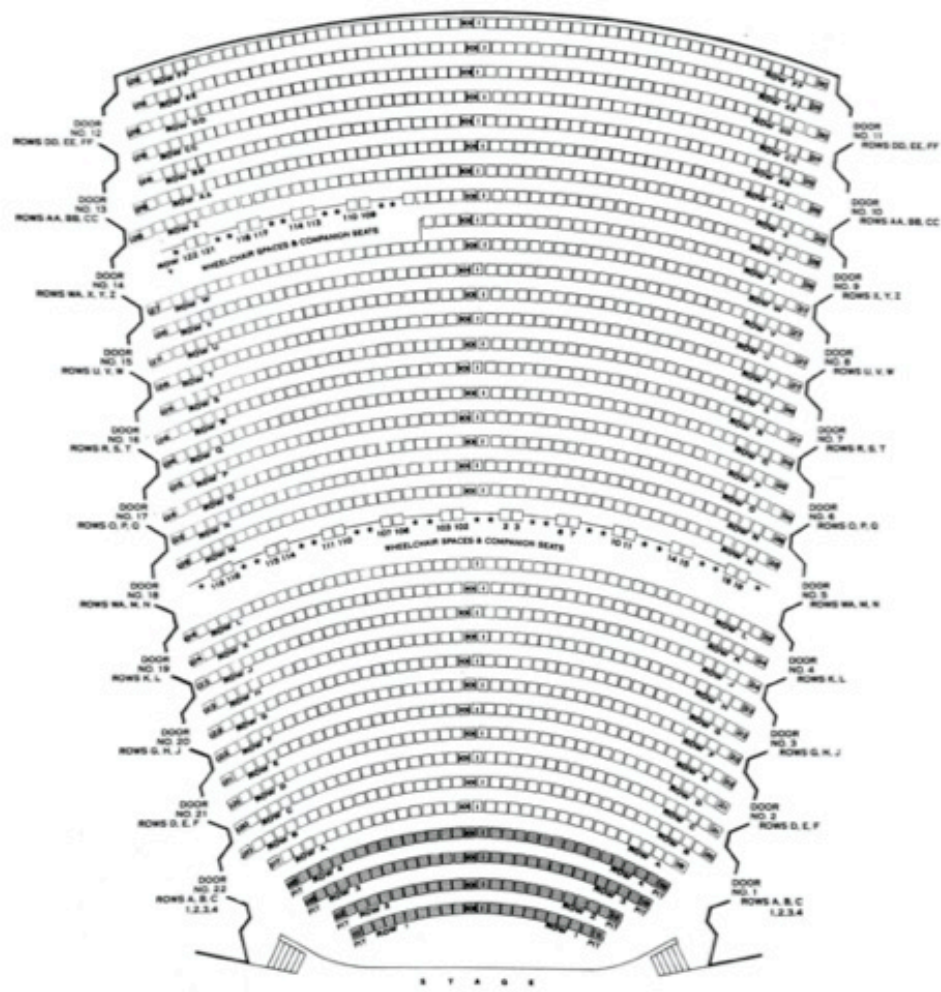
## PHONE NUMBERS

<b>Houston First Building Management</b> Fax	832-487-7050 832-487-7041
<b>Event Manager</b> Office Email	Amanda DeWalt 832-487-7057 amanda.dewalt@houstonfirst.com
<b>Managing Director, Operations</b> Office Cell Email	Robert Eubanks 713-238-1474 281-386-9581 reubanks@foundationforjoneshall.org
<b>Technical Director</b> Cell Email	Amanda Clayton 610-563-7061 aclayton@foundationforjoneshall.org
<b>Stage Door / Security</b>	713-238-2384 832-487-7062
<b>IATSE Stagehand Local 51</b>	713-697-3999
<b>Local Telephone Service</b>	800-499-7928
<b>Visit Houston</b>	713-437-5200

## GENERAL INFORMATION

### SEATING CAPACITY

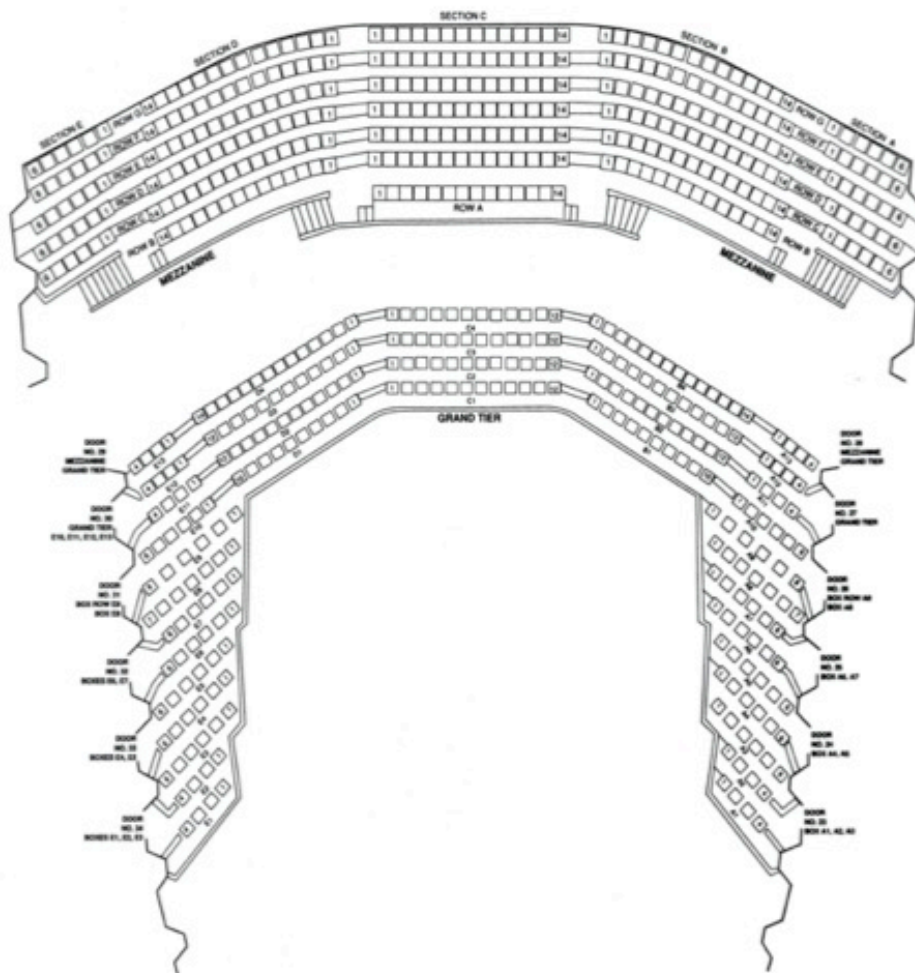
TOTAL CAPACITY	2,912
Orchestra	1,527
Pit seats (removable)	108
Wheelchair accessible positions	28
Wheelchair companion	29
LEVEL TOTAL	1,692
Mezzanine	326
Boxes	106
Grand Tier	180
LEVEL TOTAL	612
Balcony (optional)	608



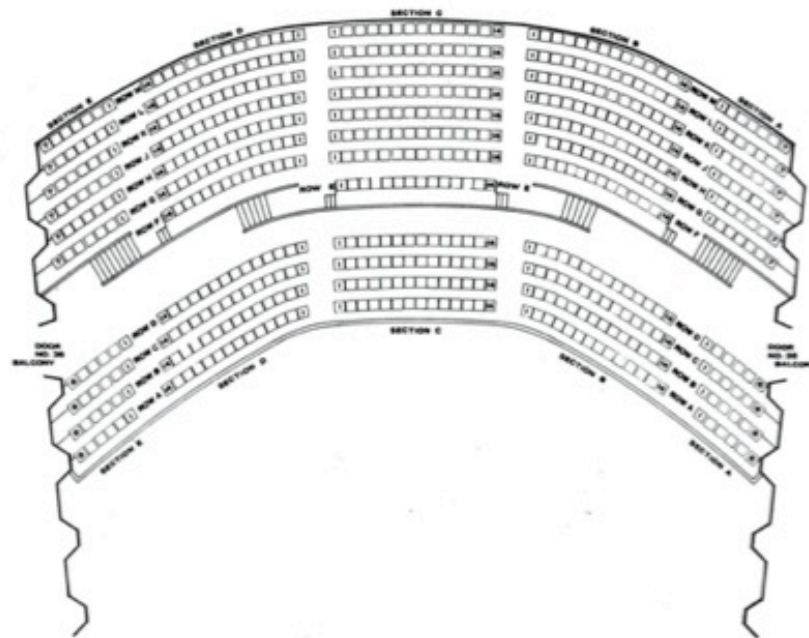
Orchestra - 1,525 Seats  
 Pit Seats (Removable) - 108 Seats  
 Wheelchair Accessible Positions - 29 Spaces  
 Wheelchair Companion - 30 Seats

**Jesse H. Jones Hall for the Performing Arts**

Total Capacity - 2,912



Mezzanine - 326 Seats  
 Boxes - 106 Seats  
 Grand Tier - 180 Seats



Balcony - 608 Seats

## STAGE FLOOR

Maple, stained a lighter shade than the teak walls of the audience chamber.

## ORCHESTRA PIT

The orchestra pit is hydraulic, adjustable to 18' below stage. It moves in 2 pieces that cannot move simultaneously.

## LOADING DOCK

Location	Stage left
Stacking motors	2 - CM Lodestar, single phase, ½ ton, stage left

### Door A

Height (from street level)	4'
Door height	14'
Door width	9'-10"

### Door B

Height (from street level)	3'-8"
Door height	8'
Door width	9'

Both docks require dock plates. Dock plates are available.

Docks are on the sidewalk and very close to the street. Trucks blocking the sidewalk must move as soon as they are empty. Large semis require permits and the presence of HPD. Permits can be obtained through the Houston First Event Manager. Loading and unloading semis that block traffic lanes is prohibited between 7am and 9am on weekdays. **Trucks may be staged prior to load in.** Consult with the Technical Director for staging information.

We do not have shore power.

We do not have a forklift.

## BACKSTAGE FREIGHT ELEVATOR

Location	Stage left, with access to all dressing rooms, traps, and rehearsal room
Height	7'-6"
Width	7'
Depth	10'
<b>Door</b>	
Height	7"
Width	5'-6"
Capacity	8,000 lbs



## **DIMENSIONS**

### **Proscenium**

Maximum height	31'
Minimum height	18'
Maximum width	61'
Minimum width	48'

### **Stage depth**

Plaster line to upstage wall	50'
------------------------------	-----

### **Center**

Center line to stage left wall	59'
Center line to stage right wall	61'

### **Apron**

Plaster line to edge of apron	3'-6" at center
-------------------------------	-----------------

### **Orchestra pit**

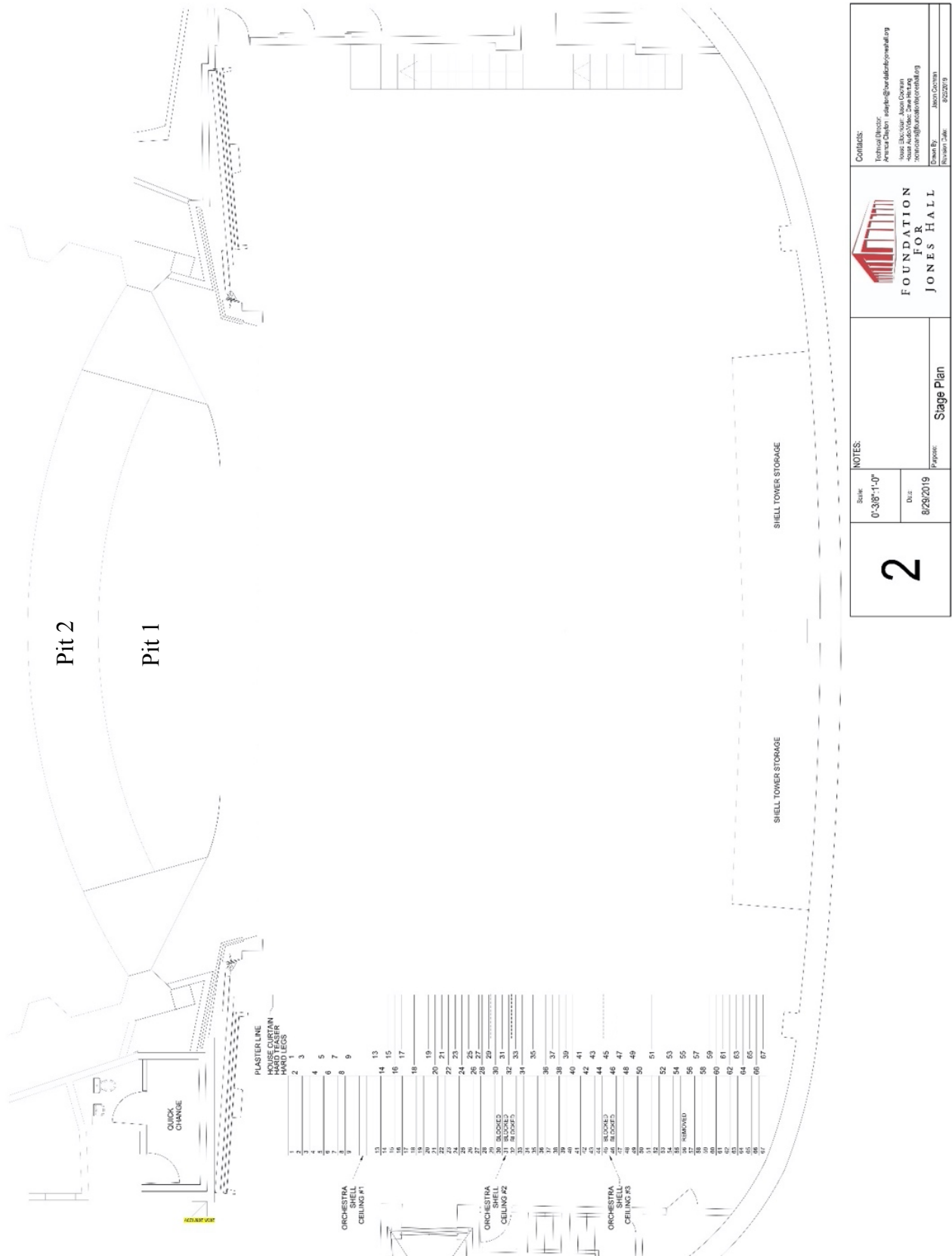
Height	Variable in 2 pieces from stage level to 18' below stage
Width	50'
Depth at center	18'
Depth at ends	11'

### **Unobstructed free height**

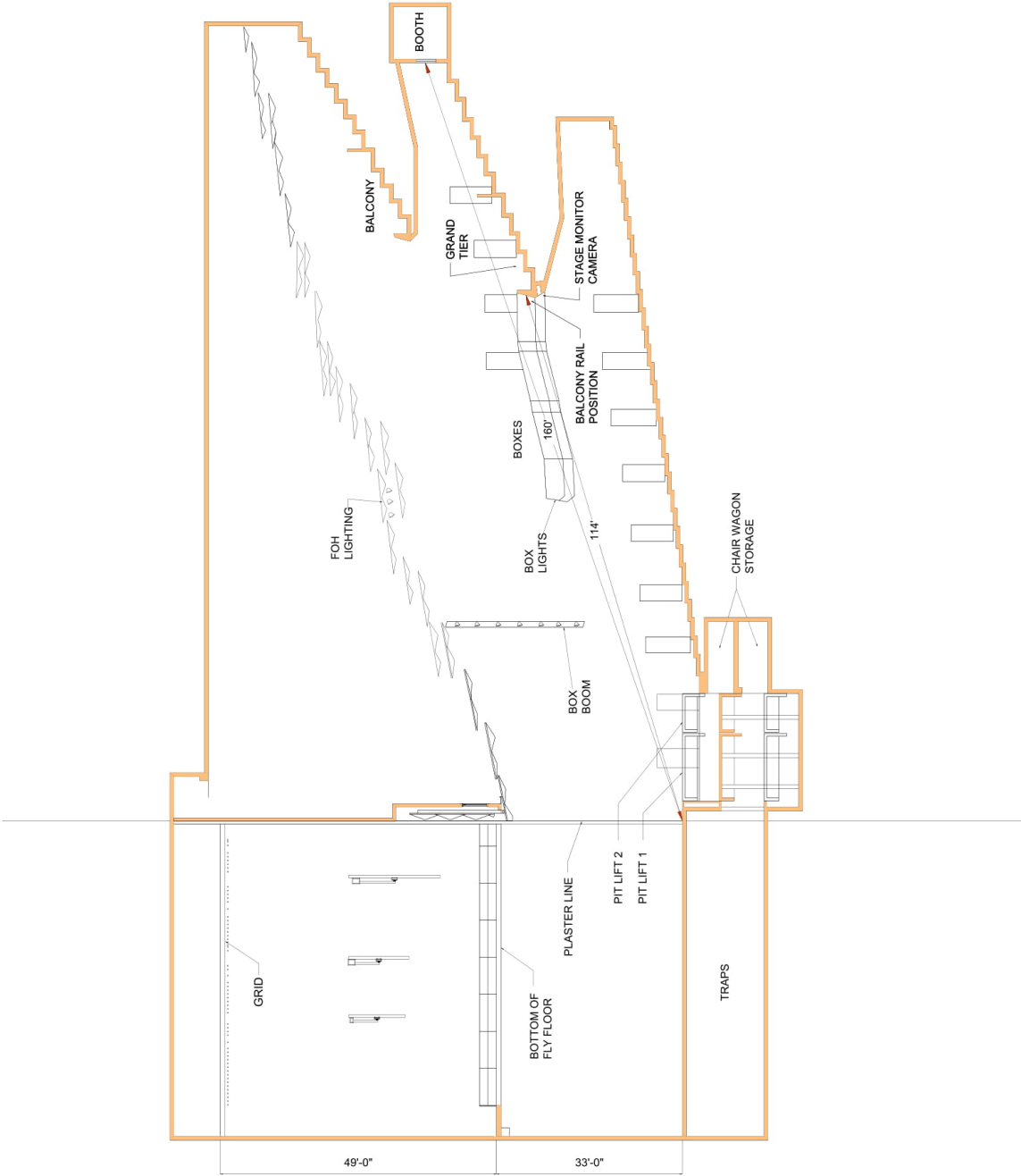
Free height under grid	82'
Free height stage left wing	33'-3"
Free height stage right wing	32'-6"



## STAGE PLAN



SECTION WITH HIGH CEILING



4	Scale: 0'-3/16"=1'-0"	NOTES:	 FOUNDATION FOR JONES HALL	Contacts: Technical Director: Amanda Clayton   aclayton@foundationforjoneshall.org House Electrician: Jason Cochran House Audio/Video: Dave Hartung technicians@foundationforjoneshall.org
	Date: 8/29/2019			Drawn By: Jason Cochran
	Purpose: Section High Ceiling			Revision Date: 1/6/2019

## RIGGING

### STAGE

#### Fly system

Description	Double purchase counterweight
Quantity	67 linesets at 8" centers with 5 lift lines per set 9 linesets are not usable
Locking rail	Wardrobe level, 32' above stage left deck
Loading bridge and gallery	Accessible from Wardrobe level via a circular stairway
Arbor capacity	550 lb Weight available is 25,900 lbs above pipe weight
Batten length	72'
Batten OD	2 3/8"
Maximum trim	77'
Pin rail	Stage right

#### Chain Hoists

Description	CM Lodestar, 3 phase, 1 ton
Quantity	8

### STAGE DRAPES

#### Grand Curtain

Description	Gypsy Red velour with 100% fullness
Operation	Guillotines Travels to 45' opening
Control	Manual Guillotines in/out from fly rail and/or stage left deck (requires 2 people) Travels in/out from stage right deck

#### Soft Goods

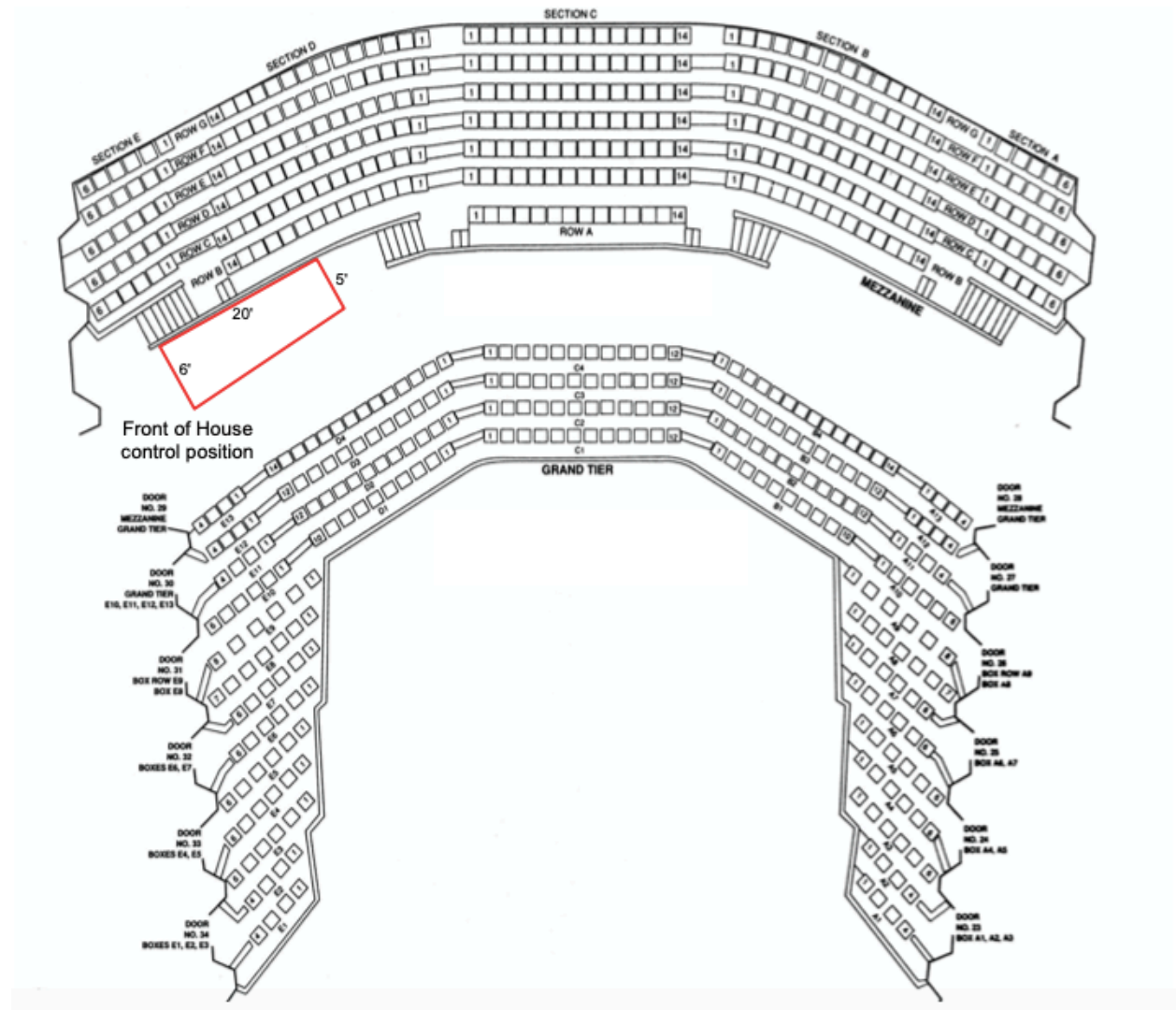
Qty	Description	Color
6	Legs, sewn flat	Black
6	Borders, sewn flat	Black
1	Full stage backdrop, sewn flat	Black
1	Full stage backdrop, with fullnesss	Black
1	Scrim	Black
1	Scrim	White
1	Cyc	Natural

LINE SCHEDULE		
LINE	DIS	JONES HALL
	0'-0"	Plaster Line
	1'-6"	Grand Curtain
	1'-11"	Hard Legs
	2'-7"	Hard Teaser
1	3'-4"	
2	3'-8"	
3	4'-4"	
4	5'-8"	
5	6'-4"	
6	7'-0"	
7	7'-8"	
8	8'-4"	
9	9'-0"	
10		Shell ceiling
11		Shell ceiling
12		Shell ceiling
13	11'-8"	
14	12'-4"	
15	13'-0"	
16	13'-8"	
17	14'-4"	
18	15'-7"	
19	17'-0"	
20	17'-8"	
21	18'-4"	
22	19'-0"	Projection Screen
23	19'-8"	
24	20'-4"	
25	21'-0"	
26	21'-6"	
27	22'-0"	
28	22'-4"	
29	23'-0"	
30		Shell ceiling
31		Shell ceiling
32		Shell ceiling
33	25'-8"	
34	26'-4"	
35	27'-5"	
36	28'-8"	
37	29'-4"	
38	30'-0"	
39	30'-8"	
40	31'-4"	
41	32'-0"	
42	32'-8"	
43	33'-4"	
44	34'-0"	
45		Shell ceiling
46		Shell ceiling
47	36'-0"	
48	36'-8"	
49	37'-4"	
50	38'-0"	Cyc
51	39'-3"	
52	40'-4"	
53	41'-0"	Cyc lights
54	41'-8"	
55	42'-4"	
56		Dead pipe
57	43'-8"	
58	44'-4"	
59	45'-0"	
60	45'-8"	
61	46'-4"	
62	47'-0"	
63	47'-8"	
64	48'-4"	
65	49'-0"	
66	49'-8"	
67	50'-4"	Short pipe

## SOUND

### MIX POSITION

Located in mezzanine cross aisle, no seat removal necessary. For rear orchestra position, seat removal is necessary. 250' mult run from either position to stage left. House system access is from mezzanine position or backstage left.



### EQUIPMENT

Console

Yamaha CL5, 48 channels

### SPEAKERS

Main System

d&b Qi1 line arrays (flown, 10/side, 2/center, **not removable**)

4 – d&b J subwoofers

4 – d&b Q7 loudspeakers (front or side fill)

16 – d&b 4S loudspeakers (front fill)

Under Mezzanine System

d&b E9 speakers on delay

Balcony Fill System

d&b Qi7 speakers on delay

## MONITOR SYSTEM

Console  
Speakers  
Amplifier

Yamaha CL1  
8 – EAW 200 monitor wedges  
QSC PLX 2402

## MICROPHONES

Qty	Brand	Model
10	Shure	SM 57
20	Shure	SM 58
6	Shure	Beta 58
4	Shure	Beta 87A
8	Shure	KSM 137
8	Shure	SM 81
8	Shure	UHFR
1	Shure	Beta 52
6	Shure	Beta 98
2	Shure	Beta 98H
4	Sennheiser	MD 421
4	Sennheiser	MD 441
4	Sennheiser	E 906
3	AKG	C 391
6	AKG	C 414
6	AKG	C 451
1	AKG	D 112
3	AKG	C 747
5	DPA	4099P
6	Meyer	M88
5	EV	RE-20
3	EV	4060

## COMMUNICATION

Stage right has a paging system for dressing and backstage. Show feed can be sent to dressing rooms from this location.

## INTERCOM SYSTEM

Lines to booth, follow spot pods, stage left, and fly rail  
7 – Wireless Clear-Com FreeSpeak headsets, 4 channels  
5 – Portable BOH radios with speaker microphone

## LIGHTING

### LIGHTING POSITION

Located in mezzanine cross aisle, no seat removal necessary

### CONSOLE

ETC Gio @5

### OTHER AVAILABLE CONSOLE

ETC Nomad Puck

### DIMMER

300 Strand dimmers, 2.4k, dimmer per circuit  
48 Strand dimmer portable rack

### CIRCUITS

Cove	18
Box booms	12/side
Eyebrows	8/side
Overhead	22 – 6 circuit multi cables, dropped from grid stage right
Deck	16 – 4 circuit floor pockets
Forestage Grid	8
Midstage / Jump	8
Locking / Pin Rail	8/side
Grid Iron	8

### INSTRUMENTS

#### Permanently installed

Qty	Description	Lens	Position
6	Aryton Khamsin TC		Cove
18	ETC Source Four	10°	Cove
2	ETC Source Four with Follow Spot Yokes	5°	Cove (Follow Spots)
12	ETC Lustr 2	19°	Box booms
20	ETC Source Four	19°	Box booms
4	ETC Source Four	19°	Eyebrows
4	ETC Source Four	36° EDLT	Eyebrows
4	ETC Source Four	50°	Eyebrows (Curtain Wash)
2	ETC Source Four with iQ + DMX Iris	19°	Overhead (Conductor Special)
18	Showline SL 520 LED Light Bars		Lineset (For Cyc)
2	Xenon 2k Super Troopers		Booth (Follow Spots)

#### Available inventory

Qty	Description	Lens
103	ETC Source Four Par	Very Narrow / Narrow / Medium / Wide
316	ETC Source Four Bodies	
18	ETC Source Four Lens	5°
7	ETC Source Four Lens	10°
104	ETC Source Four Lens	19°
115	ETC Source Four Lens	26°
81	ETC Source Four Lens	36°



10	ETC Source Four Lens	EDLT 36°
24	ETC Source Four Lens	50°
20	8" 2k Fresnel	
8	Martin MAC Quantum Wash	
2	Clay Packy Alpha 700 HPE	
17	Showline SL 520 LED Light Bars	
34	ETC Source Four Iris Unit	

## **ELECTRICITY**

### **Voltage**

208/120V, 3 phase, 60 Hz

### **Stage right**

2 – 400A

1 – 400A, used for house auxiliary dimmers and motor power

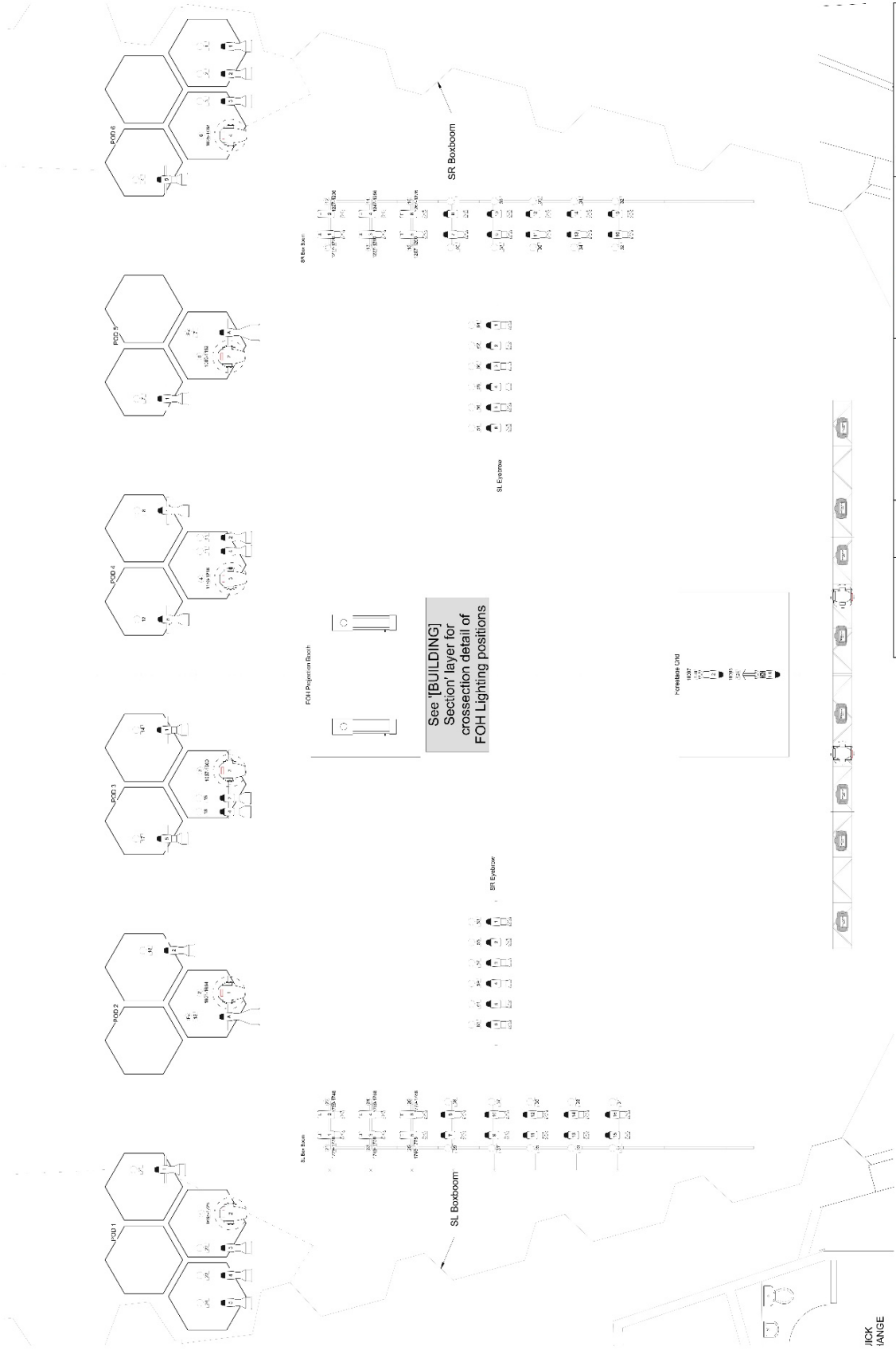
### **Stage left**

1 – 200A, isolated for audio

### **Connectors**

Cam-Lok Series J, 400A

FRONT OF HOUSE LIGHTING



11 OF	NOTES:		FOH Lighting
	Scale:	1/25	
		Date:	8/29/2019
		Prepared By:	James Coleman
		Revised Date:	08/29/19
		CONTACTS:	
		Technical Support: <a href="mailto:TechnicalSupport@joneshall.org">TechnicalSupport@joneshall.org</a>	
		General Inquiry: <a href="mailto:GeneralInquiry@joneshall.org">GeneralInquiry@joneshall.org</a>	
		House Production: <a href="mailto:HouseProduction@joneshall.org">HouseProduction@joneshall.org</a>	
		Technical Support: <a href="mailto:TechnicalSupport@joneshall.org">TechnicalSupport@joneshall.org</a>	

## ADDITIONAL EQUIPMENT

### DRESSING ROOMS

The dressing room corridor on stage level connects to stage left. All dressing rooms are equipped with utility outlets, lighted table mirrors, 1 full length mirror, hanging racks, toilets, sinks, and showers.

Dressing Room #	# of People	Level	Other
401	1	Stage	Piano, Wheelchair Accessible
402	1	Stage	
403	1	Stage	
404	1	Stage	Sofa
601	2	Wardrobe	
602	2	Wardrobe	
603	2	Wardrobe	
604	2	Wardrobe	
605	20	Wardrobe	
702	20	Chorus	Wheelchair Accessible
703	20	Chorus	Wheelchair Accessible
	20	Traps	

### MUSICIANS' LOUNGES

There are 2 Musicians' Lounges on Traps Level. Generally, one is for men and the other is for women. There are bathrooms, sofas, tables, benches, and lockers. There are showers in the men's lounge.

### LAUNDRY ROOM

The laundry room is located on Wardrobe Level, accessible via elevator and stairs.

Available equipment: 2 washers, 2 dryers, 1 steamer.

### REHEARSAL ROOM

50' x 70', resilient floor, sound-proofed with one mirror wall and ballet barre.

### RISERS

16 – 4' x 8' platform tops  
 16 – Sets of legs in 8", 16", 24", and 32" heights  
 Skirting available

### DANCE FLOOR

10 – Rosco black marley rolls  
 6 – Rosco white marley rolls

### MUSICAL INSTRUMENTS

1 – Steinway, Model D Concert Grand, 9'

### ORCHESTRA EQUIPMENT

Chairs  
 Music stands  
 Music stand lights  
 Conductor podium with music stand

*Contact the Production Department for availability.*

**VIDEO SCREEN**

Location

Variable to 3 sizes

Draper Stage Screen, front projection only

Downstage motor points or on lineset

24' x 18' (4:3), 30' x 17' (16:9), 35' x 15' (CinemaScope)

**GENIE LIFT**

Genie AWP-36S



*With orchestra shell*



*Without orchestra shell*