

MEETING SPACE SPECIFICATIONS

INDIANA STATE FAIRGROUNDS

1202 E. 38th St.
Indianapolis, IN 46205
Phone: 317-927-7500

Buildings: 17
Total Meeting Square Footage: 725,571
Total Meeting Room Count: 54

There's a reason why the Indiana State Fairgrounds plays host to more than 300 unique events each year. In addition to midway rides and 4-H exhibits during the state fair, the Indiana State Fairgrounds offers endless alternatives year-round. The 250+ acre complex, which boasts one million square feet of space, is only a 10-minute drive from downtown and easily accessible from all directions. Food and beverage services are available through concessionaires. A multi-million dollar renovation, one of the largest in the Fairground's 150-year history, was recently completed.

Indiana State Fairgrounds Venues

(floor plans for each building on the pages to follow)

4-H Exhibit Hall & Auditorium - 18,780 sq. ft.
Ag/Hort Building - 47,880 sq. ft.
Centennial Hall - 35,790 (three floors)
Champions Pavilion - 65,485 sq. ft.
Coliseum - 28,830 sq. ft. - permanent seating 7,800; arena seating 8,900
Covered Bridge - 1,750 sq. ft.
Department of Natural Resources Amphitheater - permanent seating for 157
Discovery Hall - 9,430 sq. ft.
Dow Agrosience Celebration Park - outdoor
Exposition Hall - 74,755 sq. ft.
Farm Bureau Building - 17,560 sq. ft.
Grand Hall - 6,245 sq. ft.
Hoosier Lottery Grandstand - permanent seating for 13,921; track seating 15,500
Marsh Blue Ribbon Pavilion - 70,575 sq. ft.
Normandy Barn - 3,835 sq. ft. (two floors)
Northwest Pavilion - 27,150 sq. ft.
Pioneer Our Land Pavilion - 16,335 sq. ft.
South Pavilion - 120,300 sq. ft.
Southwest Pavilion - 9,005 sq. ft.
West Pavilion - 147,040 sq. ft.

MEETING SPACE SPECIFICATIONS

INDIANA STATE FAIRGROUNDS *(continued)*

Meeting Room	Sq. Ft.	10x10 Booths	8x10 Booths	Theater	Classroom	Banquet
4-H Exhibit Hall & Auditorium						
Exhibit Hall	10,425	48	63	606	300	344
Auditorium	8,100	46	51	810	400	464
Meeting/Apartment A	200	n/a	n/a	18	8	n/a
Meeting/Apartment B	175	n/a	n/a	16	6	n/a
Meeting/Apartment C	175	n/a	n/a	16	6	n/a
Meeting/Apartment D	175	n/a	n/a	16	6	n/a
Meeting/Apartment E	200	n/a	n/a	18	8	n/a
Meeting/Office	255	n/a	n/a	22	10	n/a
Agriculture Horticulture Building	47,880	204	290	3,990	1,966	2,312
Centennial Hall						
1st Floor	12,920	76	76	1,078	532	624
2nd Floor	13,570	60	60	1,132	558	656
3rd Floor	9,300	72	72	776	382	448
Champions Pavilion						
Main Floor	65,485	324	376	5,018	2,474	2,904
Meeting Room 201	1,185	n/a	n/a	100	50	n/a
Meeting Room 202	1,765	n/a	n/a	146	72	n/a
Meeting Room 203	1,680	n/a	n/a	140	70	n/a
Coliseum Floor	28,830	169	169	2,404	1,184	1,392
Covered Bridge	1,750	n/a	n/a	146	72	88
Discovery Hall						
Main Room	2,920	10	12	244	120	136
Room 301	650	n/a	n/a	54	28	n/a
Room 302	665	n/a	n/a	58	28	n/a
Room 303	505	n/a	n/a	42	22	n/a
Room 304	515	n/a	n/a	44	22	n/a
Room 305	885	n/a	n/a	74	36	n/a
Room 306	655	n/a	n/a	56	28	n/a
Room 307	655	n/a	n/a	56	28	n/a
Room 308	990	n/a	n/a	84	42	n/a
Room 309	990	n/a	n/a	84	42	n/a
DNR Amphitheater	Outdoor	n/a	n/a	157	n/a	n/a

MEETING SPACE SPECIFICATIONS

INDIANA STATE FAIRGROUNDS *(continued)*

Meeting Room	Sq. Ft.	10x10 Booths	8x10 Booths	Theater	Classroom	Banquet
Dow Agrosiences Celebration Park	Outdoor	n/a	n/a	n/a	n/a	n/a
Exposition Hall						
Main Floor	73,740	393	493	6,146	3,028	3,560
Meeting Room	1,015	n/a	n/a	86	42	n/a
Farm Bureau Building						
Auditorium	7,660	41	49	988	384	448
Banquet Hall	4,895	32	38	408	202	232
Exhibit Hall	5,005	27	35	418	206	350
Grand Hall	6,245	37	49	520	256	350
Hoosier Lottery Grandstand	n/a	n/a	n/a	13,921	n/a	n/a
Marsh Blue Ribbon Pavilion						
Main Floor	70,575	362	471	5,514	2,716	3,192
Meeting Room 1	365	n/a	n/a	30	16	n/a
Meeting Room 2	535	n/a	n/a	46	22	n/a
Meeting Room 3	595	n/a	n/a	50	24	n/a
Meeting Room 4	1,270	n/a	n/a	106	52	n/a
Meeting Room 5	510	n/a	n/a	44	22	n/a
Meeting Room 6	2,075	n/a	n/a	174	86	96
Normandy Barn						
Upstairs	2,365	n/a	n/a	216	106	128
Downstairs	1,470	n/a	n/a	48	24	48
Northwest Pavilion	27,150	145	204	1,508	744	872
Pioneer Our Land Pavilion	16,335	87	130	1,726	850	1,000
South Pavilion						
Hall A	14,980	77	96	1,248	615	720
Hall B	42,165	244	293	2,008	990	1,160
Hall C	42,360	244	293	2,018	994	1,168
Hall D	20,795	135	135	1,248	616	720
Southwest Pavilion	9,005	44	68	750	370	432
West Pavilion	147,040	714	1,356	25,370	12,502	14,704

MEETING SPACE SPECIFICATIONS

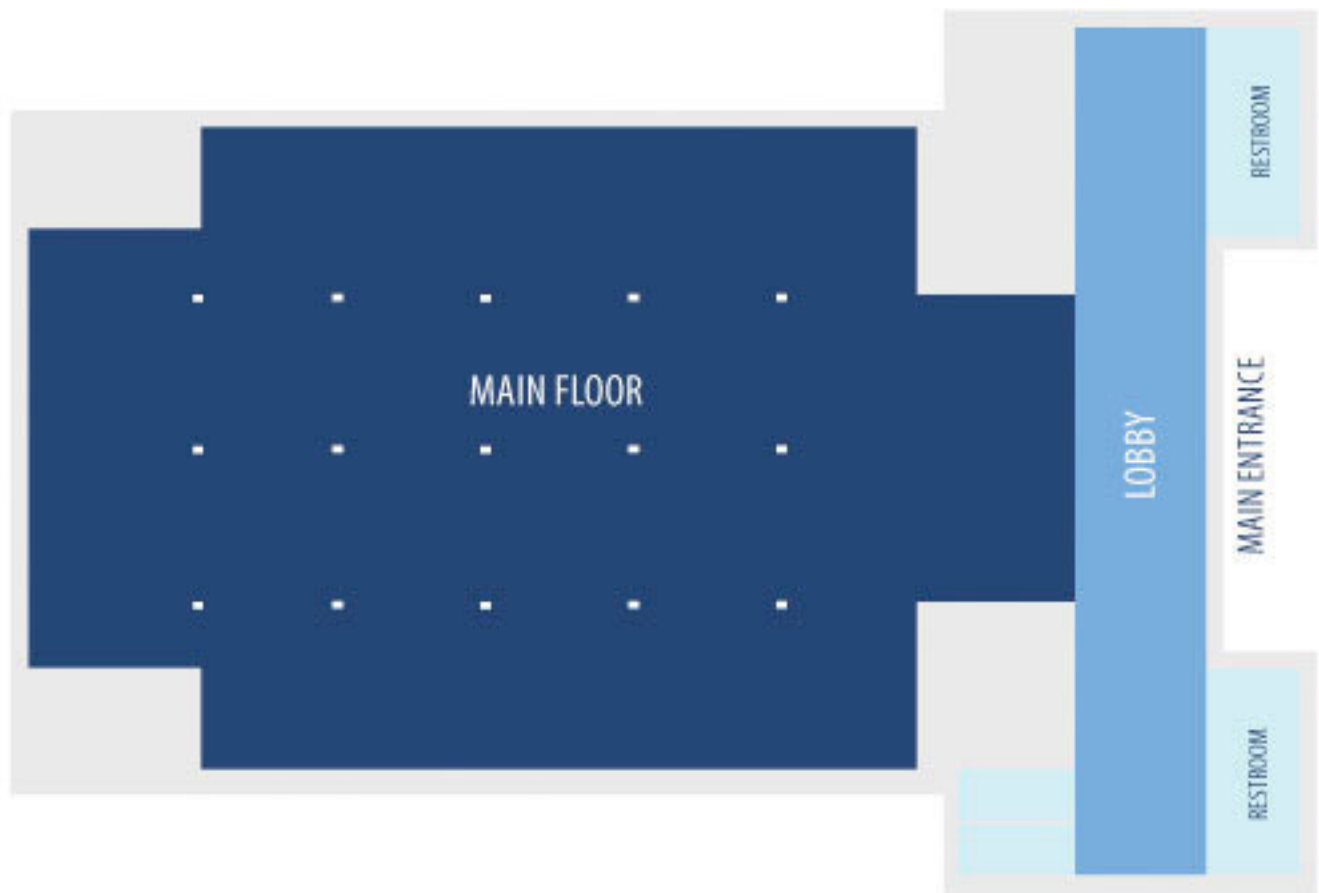
4-H EXHIBIT HALL & AUDITORIUM, *Indiana State Fairgrounds*

Description

The 4-H Exhibit Hall & Auditorium is a three (3) story venue featuring an exhibit hall, auditorium, and meeting or dorm space. The 1st floor features the exhibit hall and a comfortable 1,855 sq. ft. lobby. The 2nd floor features the auditorium, a welcoming 2,275 sq. ft. lobby, and a permanent 24' X 40' stage. The 3rd floor features six (6) meeting rooms and a small kitchenette perfect for breaks. This venue is part of the 4-H Complex, which also includes Centennial Hall, Discovery Hall, and Dow AgroSciences Celebration Park.

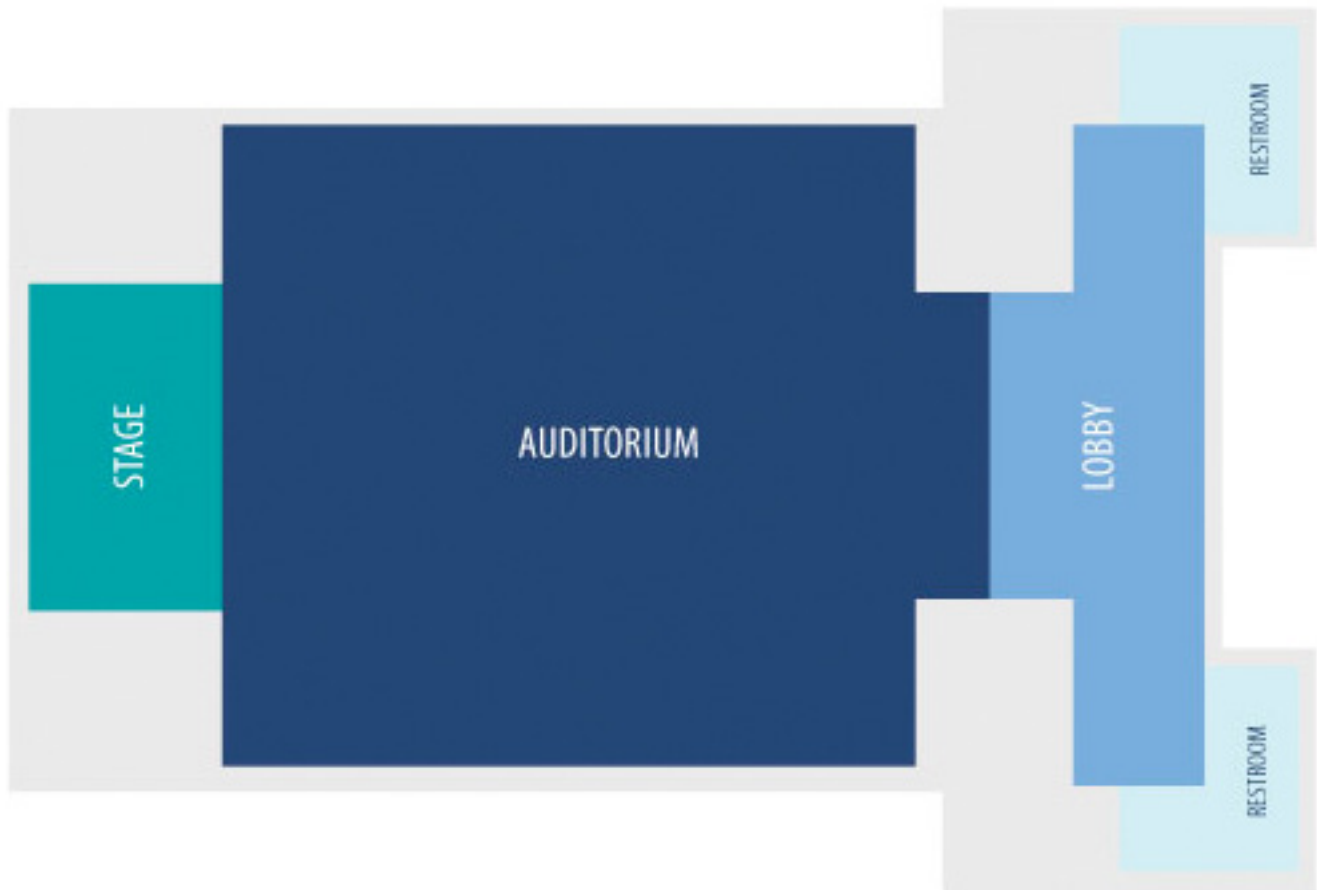
Additional Features

- 3-floor venue (Auditorium, Exhibit Hall, and Meeting Rooms)
- 24' X 40' stage in Auditorium



MEETING SPACE SPECIFICATIONS

4-H EXHIBIT HALL & AUDITORIUM, *Indiana State Fairgrounds*



MEETING SPACE SPECIFICATIONS

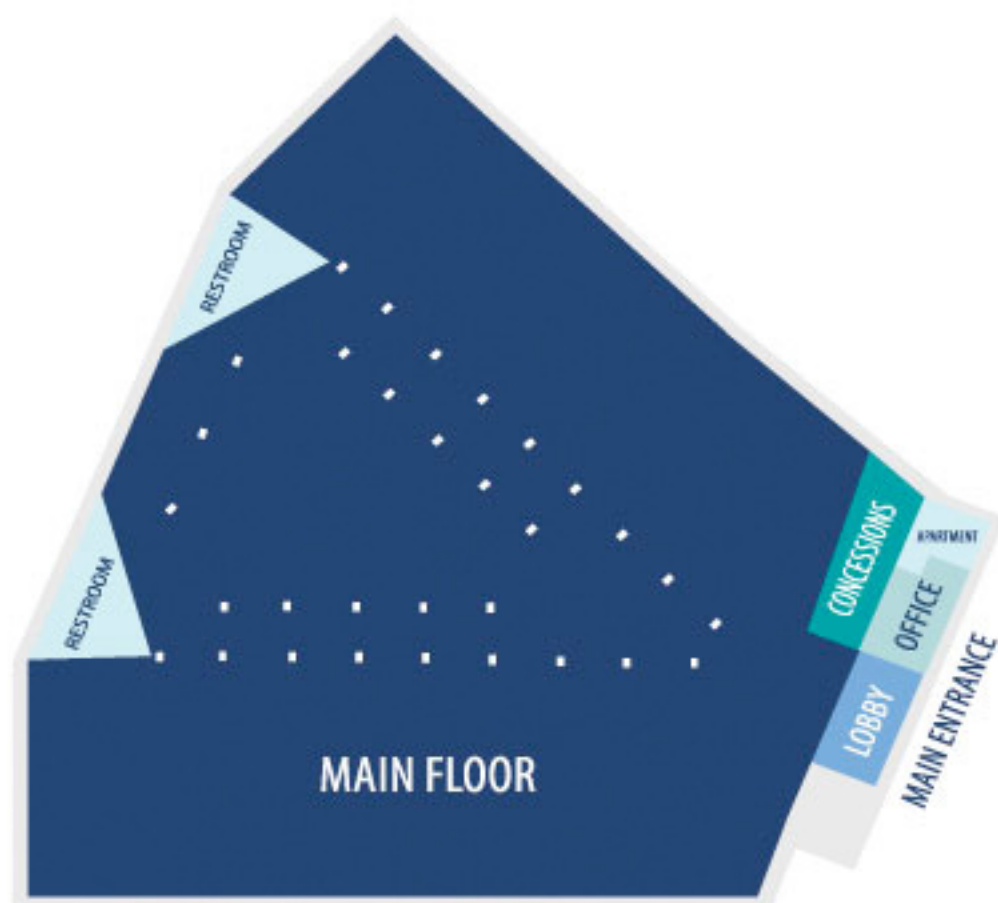
AGRICULTURE/HORTICULTURE BUILDING, *Indiana State Fairgrounds*

Description

The 47,880 sq. ft. Agriculture Horticulture (Ag/Hort) Building is a great venue for consumer and trade shows, but can also easily adapt to host banquets and seminars. This venue features permanent concessions for events and an office designed for show managers. The Ag/Hort Building is also conveniently located adjacent to event parking and features three (3) overhead doors for easy move-in and move-out.

Additional Features

- Concessions
- Parking
- Space for event office
- Space for event staff apartment



MEETING SPACE SPECIFICATIONS

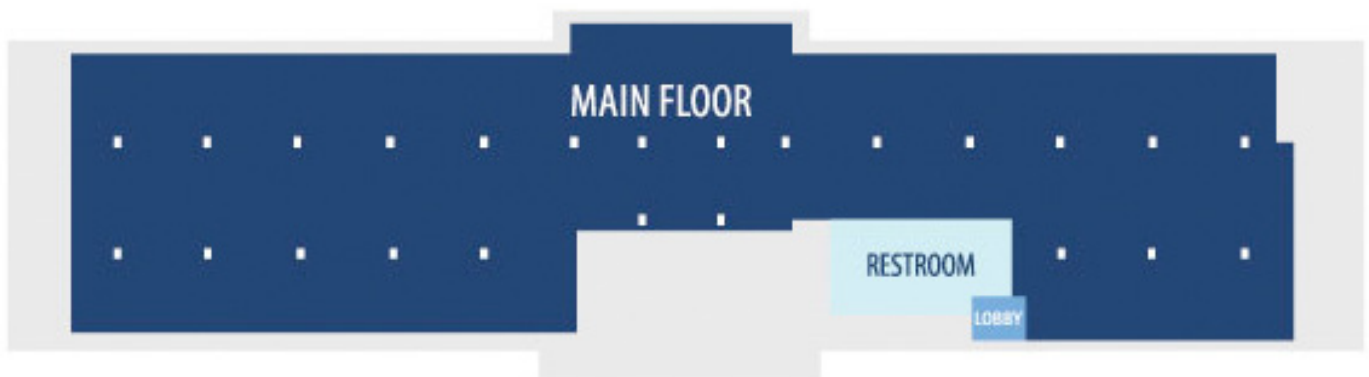
CENTENNIAL HALL, *Indiana State Fairgrounds*

Description

Centennial Hall offers three (3) floors that are great for exhibit and trade shows, but can be set to host banquets, seminars, and retreats. In addition to the main floor space, the 2nd floor includes an overhead door with a loading dock for easy event move-in and move-out. The 2nd floor includes an event office. The 3rd floor includes additional dorm space, apartments, a hospitality area, and shower and laundry facilities. Centennial Hall also features access to Dow AgroSciences Celebration Park.

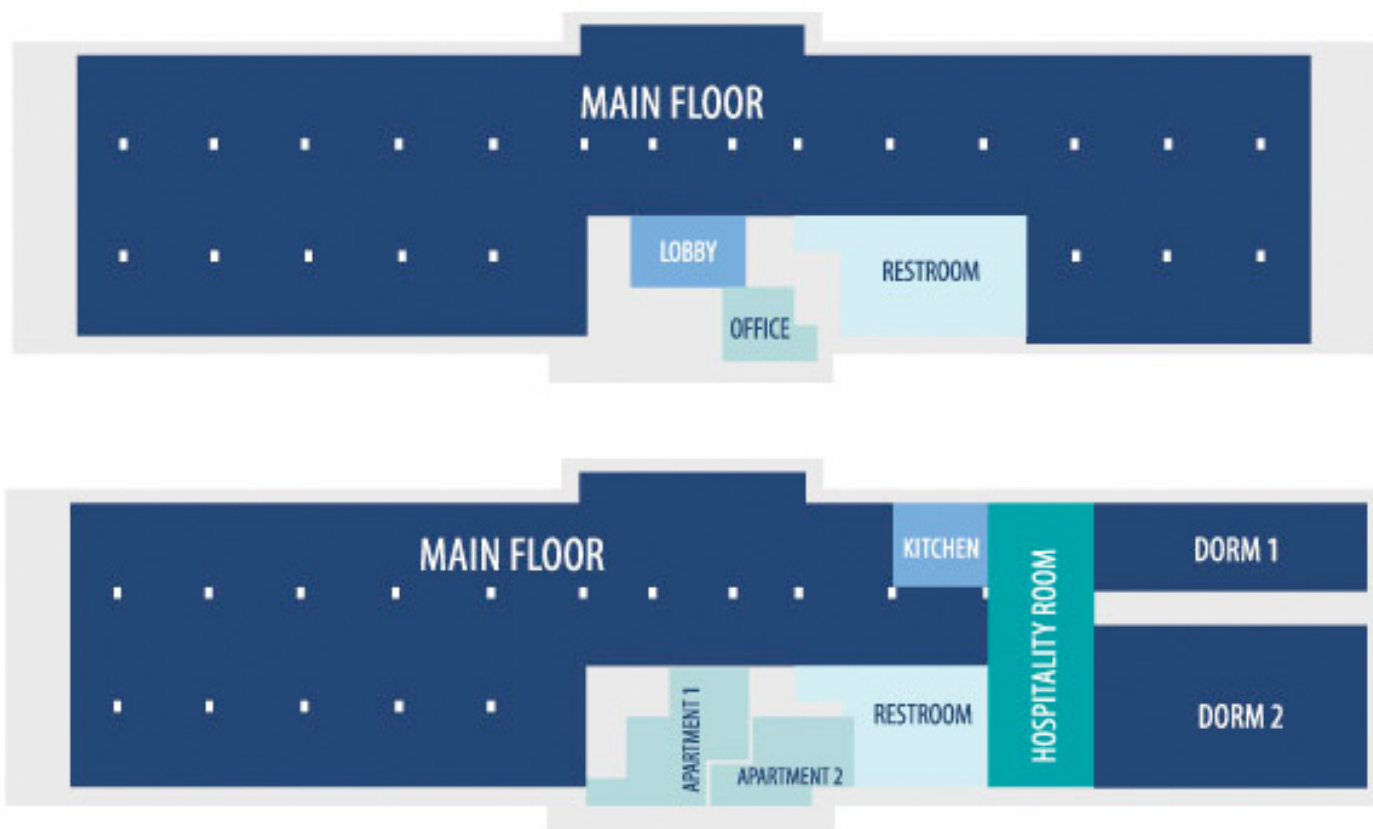
Additional Features

- 3-floor venue
- Convertible to dorm facility
- Laundry facilities
- Shower facilities
- Parking
- Space for event office
- Space for event hospitality
- Space for event staff apartments



MEETING SPACE SPECIFICATIONS

CENTENNIAL HALL, *Indiana State Fairgrounds*



MEETING SPACE SPECIFICATIONS

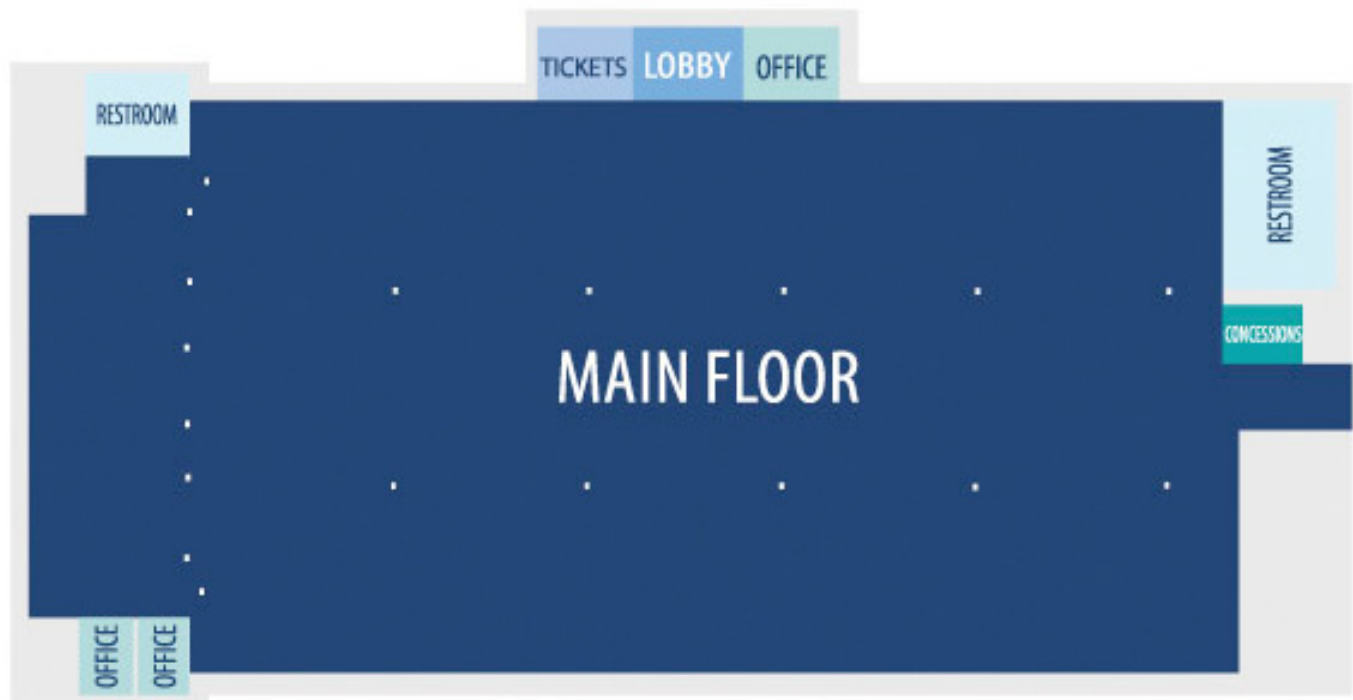
CHAMPIONS PAVILION, *Indiana State Fairgrounds*

Description

The 65,485 sq. ft. Champions Pavilion can be used for a variety of events including consumer, exhibit, trade, and agriculture shows, but can also easily adapt to host banquets and seminars. Featuring seven (7) overhead doors and two (2) bay doors at the loading dock, move-in and move-out for events is a breeze in the Champions Pavilion. This venue also has permanent concessions, event office space, and a ticket office for show use. Champions Pavilion also directly connects through enclosed walkways to the Pepsi Coliseum and Marsh Blue Ribbon Pavilion, enabling shows to expand in size. The 2nd floor of the Champions Pavilion features three (3) breakout rooms that can be used for seminars, meetings, or as dorm space.

Additional Features

- 3 meeting rooms (1,185 – 1,765 sq. ft.)
- 7 Load-in Doors with direct floor access
- Concessions
- Connectable access to the Pepsi Coliseum and Marsh Blue Ribbon Pavilion
- Shower facilities
- Space for event office
- Space for event staff apartments
- Ticket Office



MEETING SPACE SPECIFICATIONS

CHAMPIONS PAVILION, *Indiana State Fairgrounds*



MEETING SPACE SPECIFICATIONS

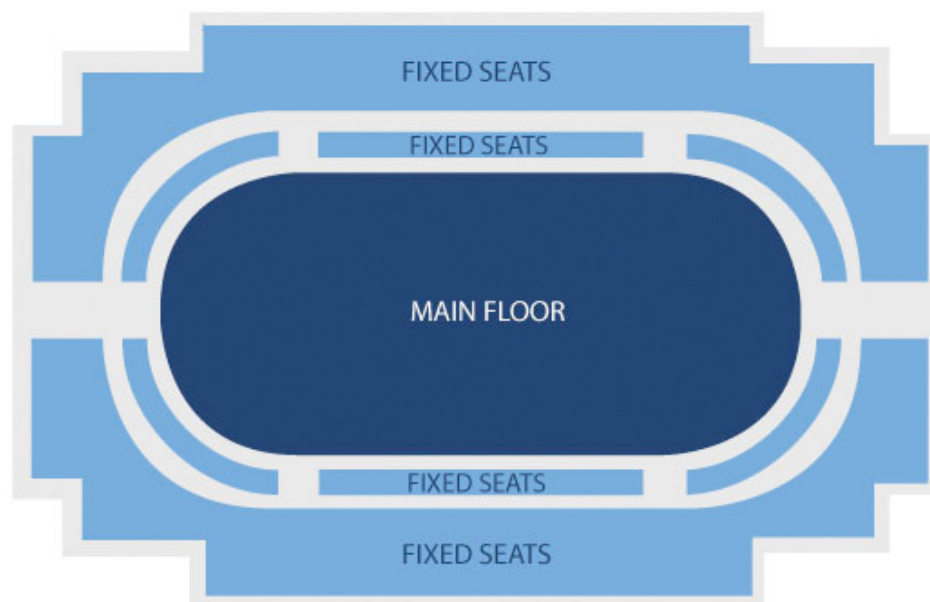
COLISEUM, *Indiana State Fairgrounds*

Description

The Coliseum offers a fixed seating capacity of 7,552. Based on a variety of setup options for concerts, sports, and other spectator events, the maximum capacity can increase to 9,041. In addition to its arena functionality, the Coliseum features a 28,830 sq. ft. equestrian ring that can also accommodate agriculture, consumer, and trade shows. The Coliseum is home to the Indiana Ice, Chill Public Ice Skating program, a full-service pro skate shop, and the Winter Club of Indianapolis. The Coliseum features three (3) overhead doors and easily connects to the Champions Pavilion and West Pavilion through enclosed walkways, enabling shows to expand in size. Originally opened in 1939, the Coliseum is truly an Indiana treasure.

Additional Features

- 28,830 sq. ft. event floor
- Connectable access to the West Pavilion and Champions Pavilion
- Equestrian arena capability
- Figure Skating Club
- Ice-floor capability
- Pro Shop for ice skating
- Space for event office
- Space for event staff apartments
- Ticket Office



MEETING SPACE SPECIFICATIONS

COVERED BRIDGE, *Indiana State Fairgrounds*

Description

The 1,750 sq. ft. Covered Bridge offers event space ideal for weddings and special events interested in an outdoor location. This venue offers event planners a unique location with a character and charm not found anywhere else. Conveniently located adjacent to ample parking, the Covered Bridge is also a great venue to combine with the Dow AgroSciences Celebration Park.

Additional Features

- Parking



MEETING SPACE SPECIFICATIONS

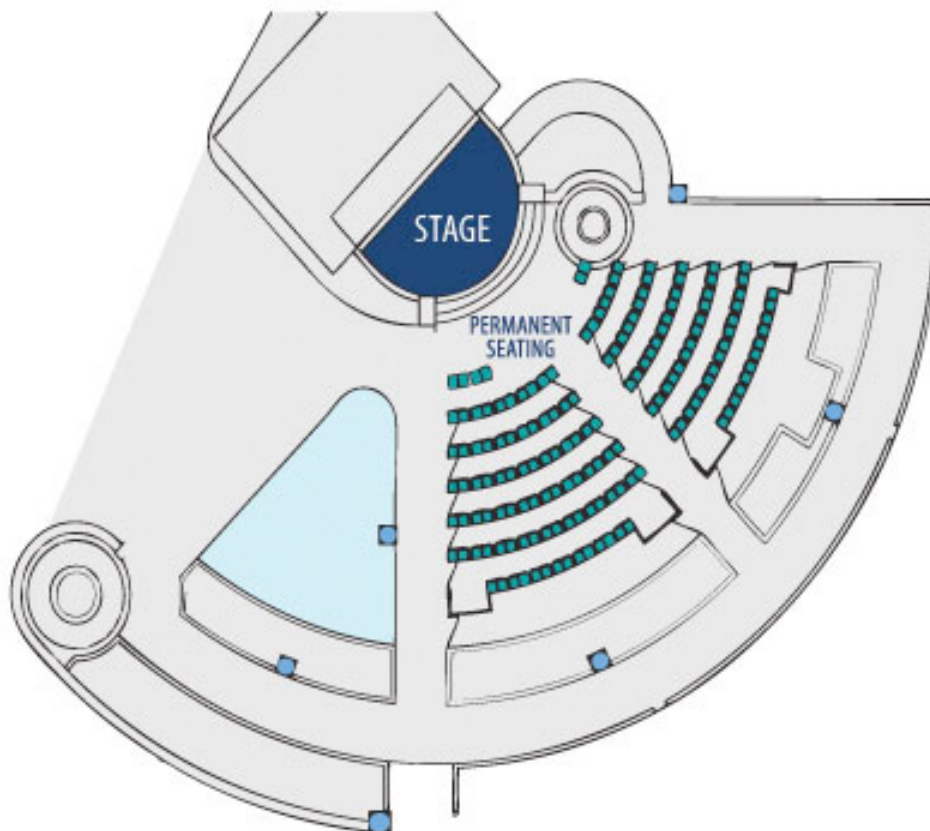
DEPARTMENT OF NATURAL RESOURCES AMPHITHEATER, *Indiana State Fairgrounds*

Description

The Department of Natural Resources (DNR) Amphitheater is a great outdoor venue for concerts, weddings, and performing arts. With permanent seating for 157 and a 22' X 26' permanent stage, this venue helps create a wonderful event. The DNR Amphitheater is privately situated on the north side of the Indiana State Fairgrounds and features parking and space for hospitality.

Additional Features

- 157-seat outdoor theater
- 22' X 26' stage
- Space for event hospitality



MEETING SPACE SPECIFICATIONS

DISCOVERY HALL, *Indiana State Fairgrounds*

Description

The 9,430 sq. ft. Discovery Hall is a great venue for meetings, seminars, banquets, and retreats. The Indiana State Fairgrounds' dedicated conference center features nine (9) breakout rooms and a main meeting area that can accommodate a variety of event setups. In addition to being ideal for meetings, this venue is completely convertible to a dorm facility with a capacity for 224 beds and includes a kitchen and laundry facility. Discovery Hall is part of the 4-H Complex, overlooks Dow AgroSciences Celebration Park, and has on-site parking.

Additional Features

- 9 meeting rooms (505 - 990 sq. ft.)
- Convertible to dorm facility (224 capacity)
- Full Ethernet and Wireless internet capabilities
- Kitchen facility
- Laundry facilities
- Parking
- Shower facilities
- Space for event hospitality
- Space for event staff apartments



MEETING SPACE SPECIFICATIONS

DOW AGROSCIENCE CELEBRATION PARK, *Indiana State Fairgrounds*

Description

The Dow AgroSciences Celebration Park, a beautifully landscaped outdoor venue, is a great setting for concerts and festivals. The 3-acre park features a 40' X 60' permanent covered stage and can accommodate up to 5,000 attendees. Located adjacent to ample parking and restroom facilities, the Dow AgroSciences Celebration Park is part of the 4-H Complex and works very well in combination with the 4-H Exhibit Hall, Centennial Hall, and Discovery Hall.

Additional Features

- 40' X 60' covered permanent stage
- Adjacent to 4-H Exhibit Hall, Discovery Hall, and Centennial Hall
- Space for event hospitality



MEETING SPACE SPECIFICATIONS

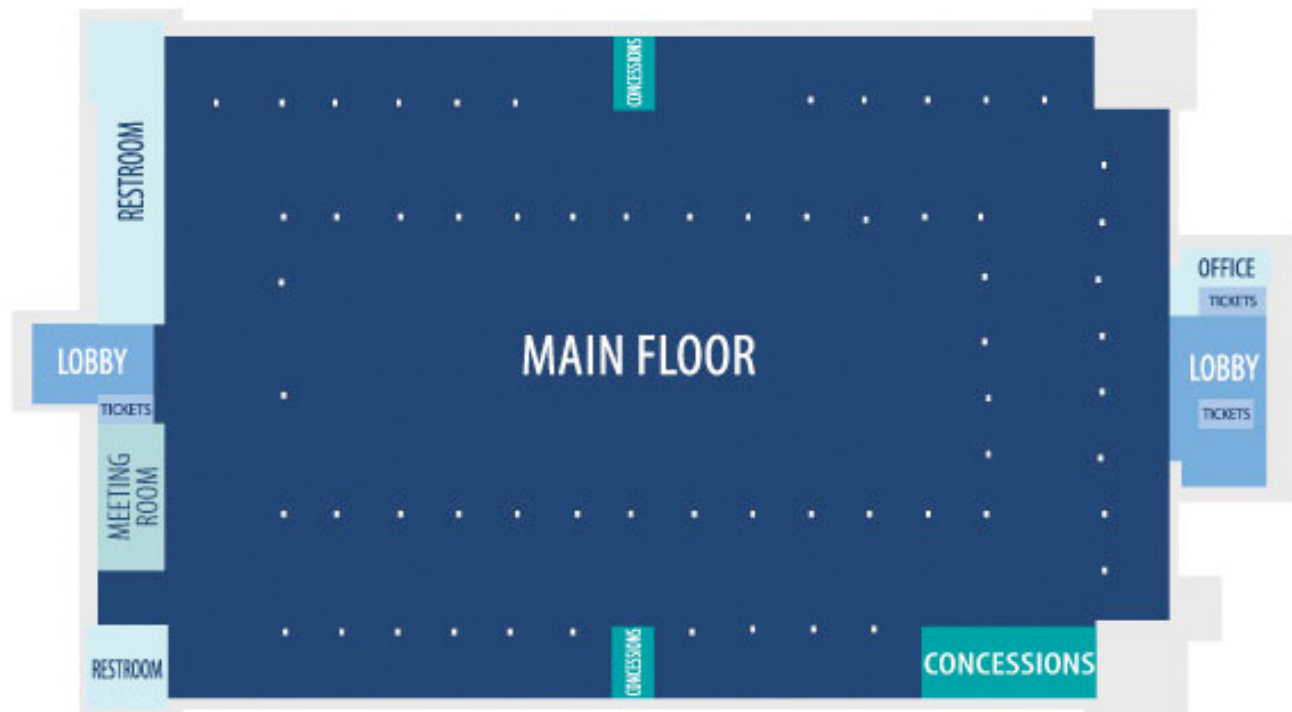
EXPOSITION HALL, *Indiana State Fairgrounds*

Description

The 73,740 sq. ft. Exposition Hall can be used for a variety of events including consumer, exhibit, and trade shows, but it is also a great venue for large banquets and seminars. In addition to the main floor, the Exposition Hall also features a 1,015 sq. ft. multi-purpose meeting room that is available during events. Three (3) overhead doors make event move-in and move-out a breeze in the Exposition Hall. This venue also has permanent concessions, event office space, and three (3) ticket offices for show use.

Additional Features

- 1 Meeting Room (1,015 sq. ft.)
- 3 Load-in Doors with direct floor access
- Concessions
- Parking
- Shower facilities
- Space for event office
- Ticket Office



MEETING SPACE SPECIFICATIONS

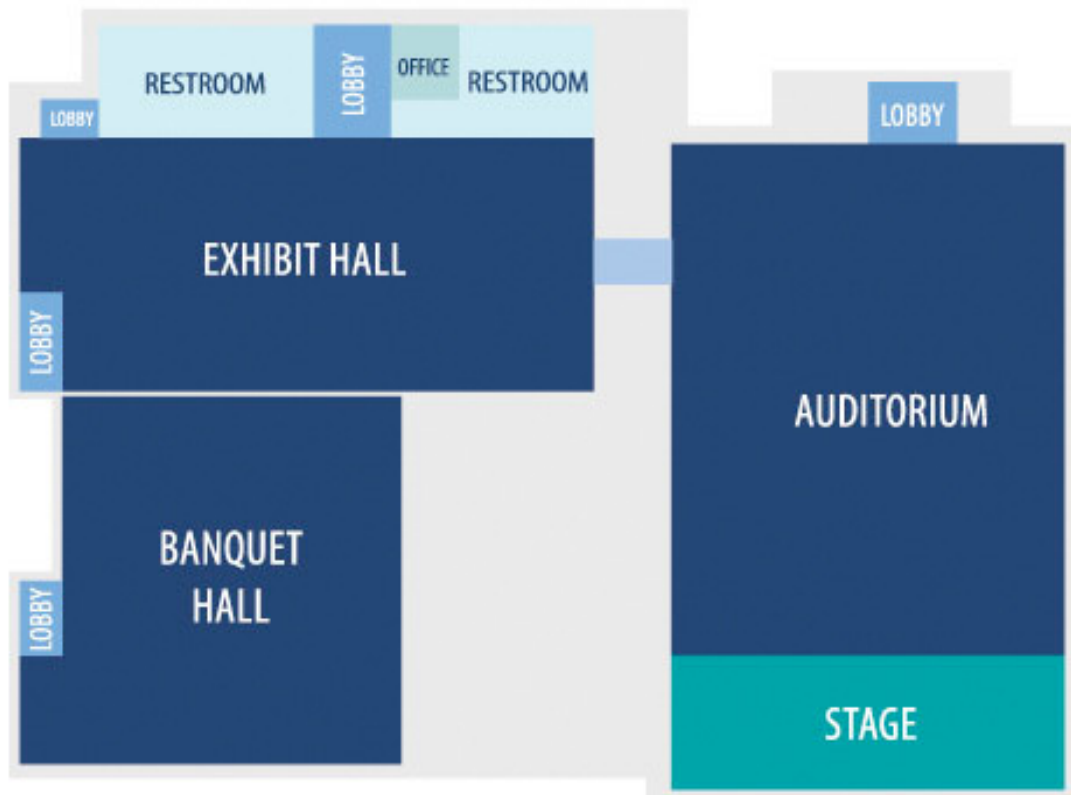
FARM BUREAU BUILDING, *Indiana State Fairgrounds*

Description

The Farm Bureau Building is one of the most diverse venues at the Indiana State Fairgrounds. The 17,560 sq. ft. venue features three (3) event spaces: Auditorium, Banquet Hall, and Exhibit Hall. The flexibility that this venue gives shows is ideal for small exhibit shows, banquet events, seminars, meetings, and events needing a built in stage. The Auditorium features a permanent 24' X 60' performance stage complete with a green room. The Farm Bureau Building also has dedicated on-site parking.

Additional Features

- 3 venues in one (Auditorium, Banquet Hall, Exhibit Hall)
- 24' X 60' stage in Auditorium
- Green Room/Dressing Rooms in Auditorium
- Space for event staff apartment
- Parking



MEETING SPACE SPECIFICATIONS

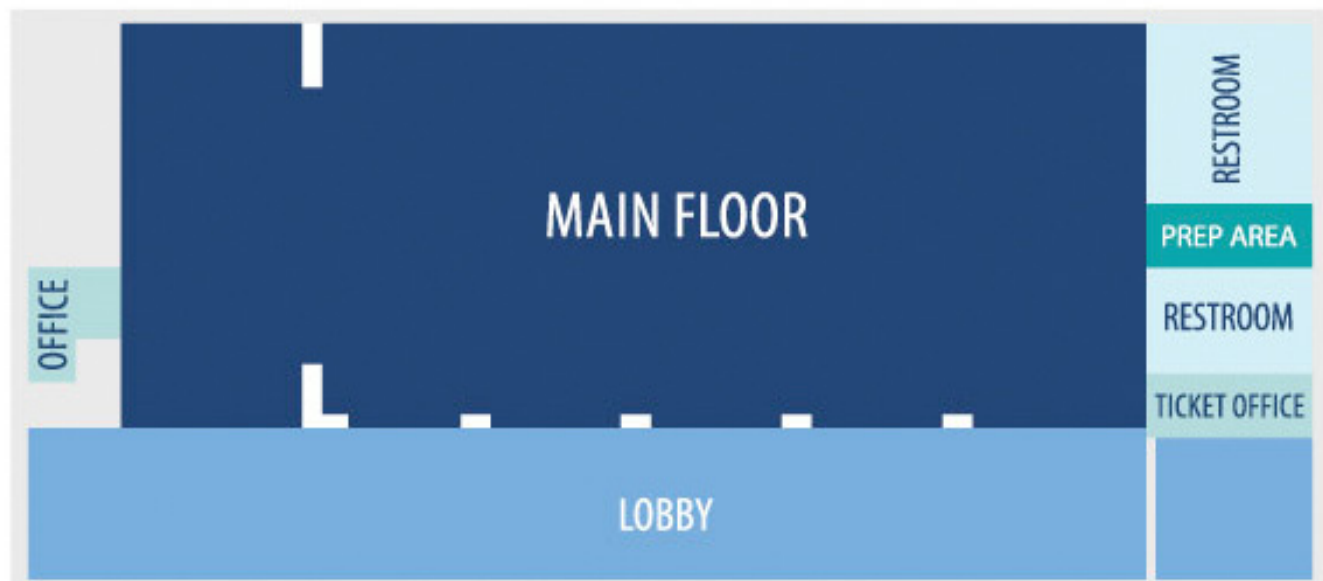
GRAND HALL, *Indiana State Fairgrounds*

Description

The 6,245 sq. ft. Grand Hall is a great venue for small exhibit shows, banquet events, seminars, meetings, and weddings. In addition to the main floor, this venue features an additional 2,590 sq. ft. of lobby area that can expand your event size or serve as pre-function space. Grand Hall also has an event office, a ticket office, a prep area, and one (1) overhead door that makes move-in and move-out for events an easy process. Parking is also available on-site.

Additional Features

- 1 Load-in Door with direct floor access
- Space for event office
- Parking
- Ticket Office



MEETING SPACE SPECIFICATIONS

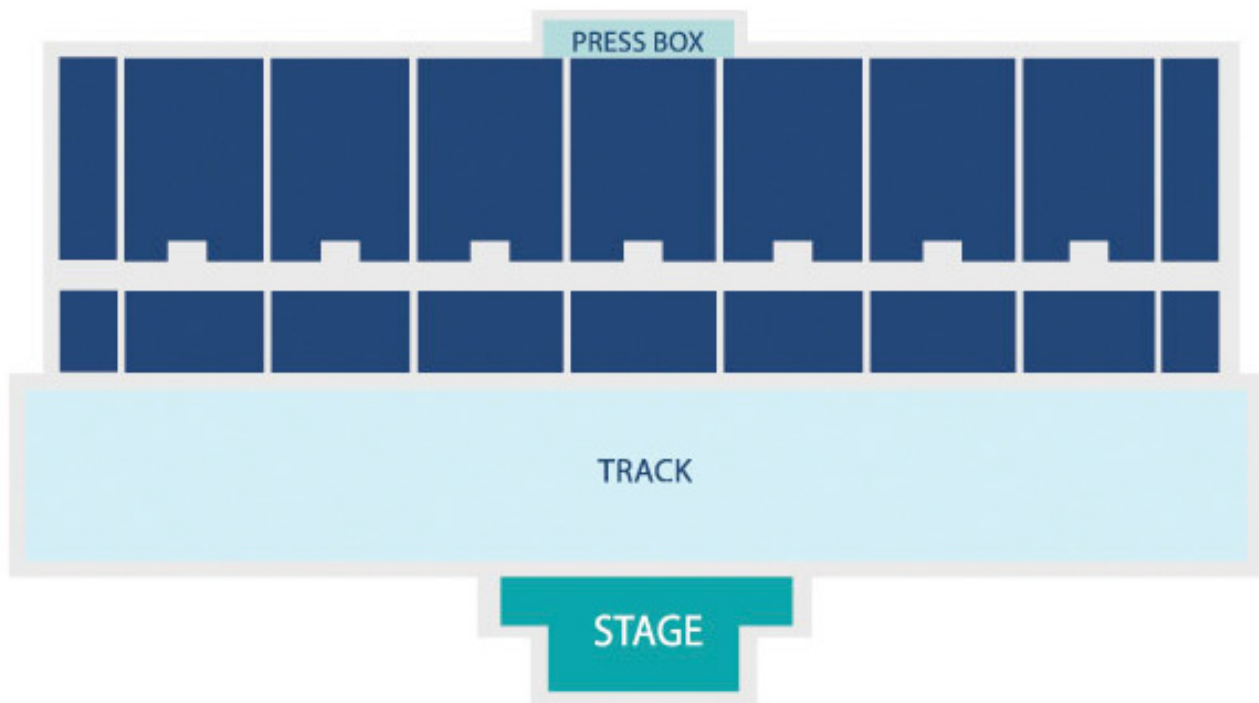
HOOSIER LOTTERY GRANDSTAND, *Indiana State Fairgrounds*

Description

The Hoosier Lottery Grandstand, located on the one-mile Track of Champions, offers a covered seating pavilion with a seating capacity of 13,921. This venue is great for motor sports and other spectator events utilizing the track and also features a permanent 48' X 80' stage complete with four (4) dressing rooms. The Hoosier Lottery Grandstand creates an ideal setting for events requiring an open stage, such as cheer and dance competitions. This venue includes permanent concessions, a dedicated box office, and offices for event use.

Additional Features

- 48' X 80' permanent outdoor stage with dressing rooms
- Space for event office
- Ticket Office



MEETING SPACE SPECIFICATIONS

MARSH BLUE RIBBON PAVILION, *Indiana State Fairgrounds*

Description

The 70,575 sq. ft. Marsh Blue Ribbon Pavilion can be used for a variety of events including consumer, exhibit, sport, and trade shows, but can also easily adapt to host large banquets, seminars, and spectator events. Featuring nine (9) overhead doors and two (2) bay doors at the loading dock, move-in and move-out for events is a breeze in the Marsh Blue Ribbon Pavilion. This venue also has permanent concessions, event office space, and a ticket office for show use. The 1st floor has an additional 2,075 sq. ft. multi-purpose meeting room and is directly connectable to the Champions Pavilion through an enclosed walkway, enabling shows to expand in size. The 2nd floor of the Marsh Blue Ribbon Pavilion features five (5) breakout rooms that can be used for seminars, meetings, or as dorm space.

Additional Features

- 6 Meeting Rooms (365 – 2,075 sq. ft.)
- 9 Load-in Doors with direct floor access
- Concessions
- Connectable access to the Champions Pavilion
- Parking
- Shower facilities
- Space for event office
- Space for event staff apartments
- Ticket Office

MEETING SPACE SPECIFICATIONS

MARSH BLUE RIBBON PAVILION, *Indiana State Fairgrounds*



MEETING SPACE SPECIFICATIONS

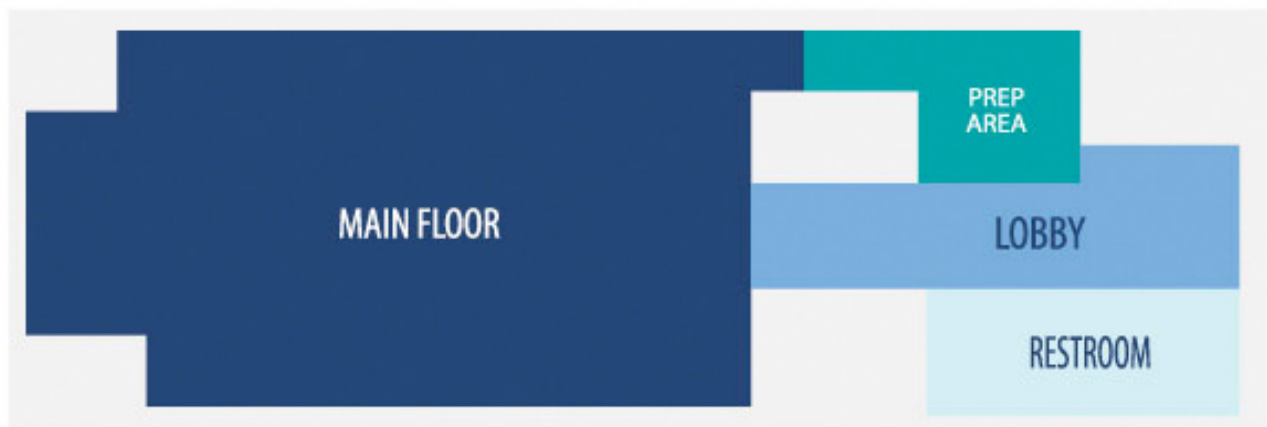
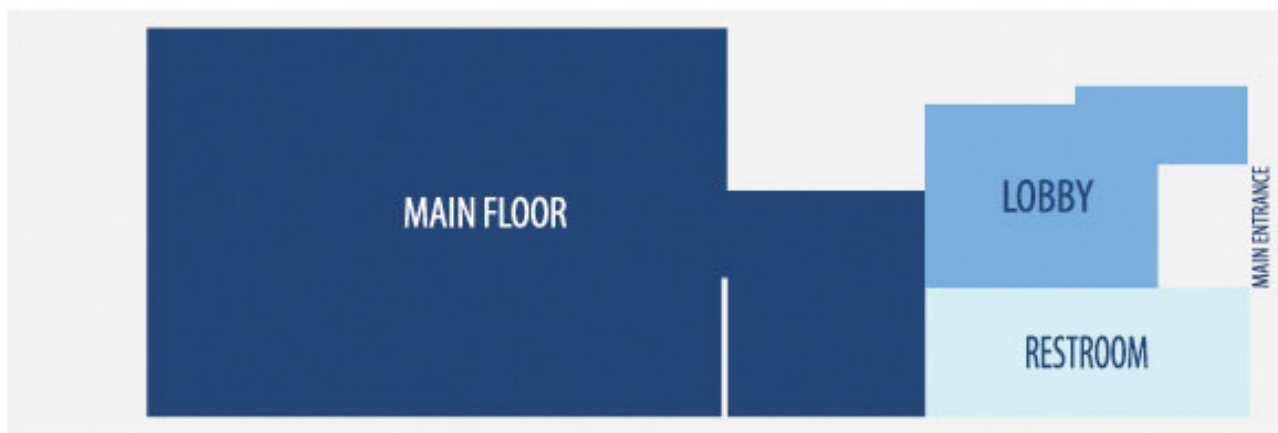
NORMANDY BARN, *Indiana State Fairgrounds*

Description

Normandy Barn offers a unique event space ideal for meetings, weddings and special events. The two-floor Normandy Barn offers event planners a location with a character and charm not found anywhere else and creates a great setting for events needing separate pre-function and event space. On-site parking is available at this venue. The Normandy Barn is commonly utilized in conjunction with the nearby Farm Bureau Building to host weddings and receptions at the Indiana State Fairgrounds.

Additional Features

- Parking
- Pre-function space



MEETING SPACE SPECIFICATIONS

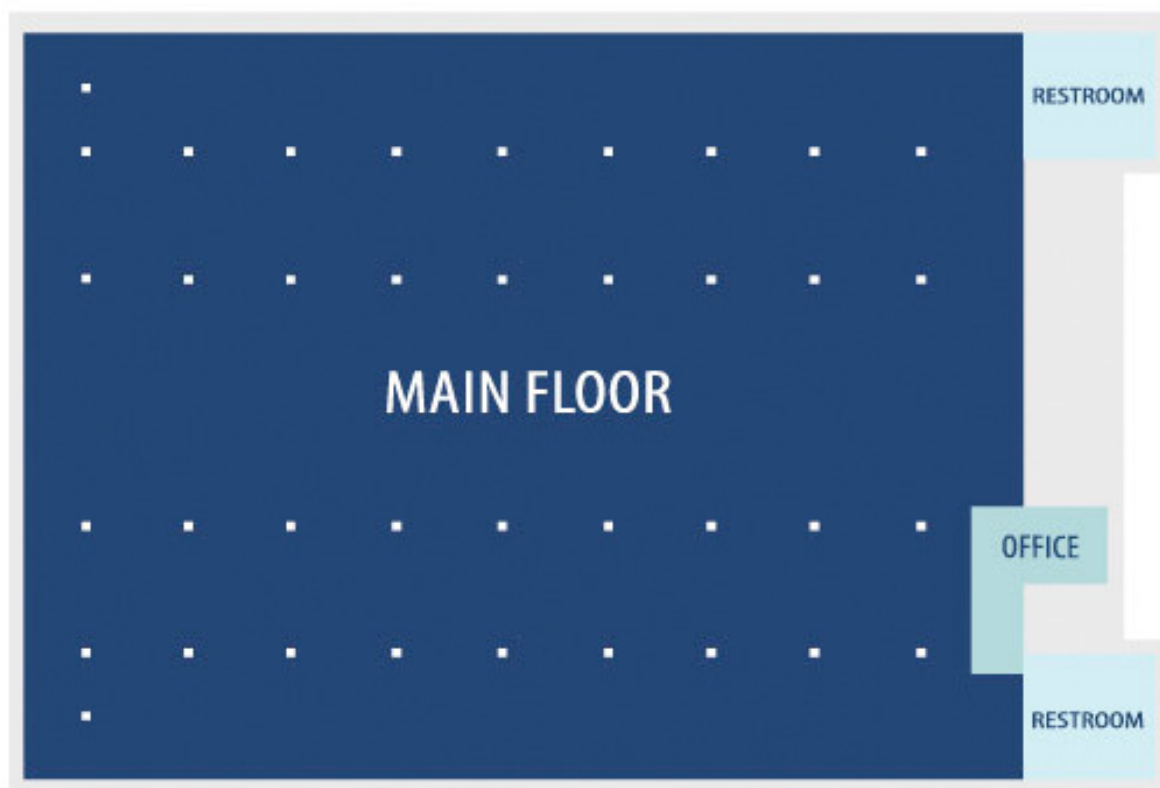
NORTHWEST PAVILION, *Indiana State Fairgrounds*

Description

The 27,150 sq. ft. Northwest Pavilion is an ideal venue for agriculture shows as well as smaller exhibit and trade shows. This venue also offers event office space and three (3) overhead doors for easy move-in and move-out access. The Northwest Pavilion is conveniently located adjacent to ample parking.

Additional Features

- 3 Load-in Doors with direct floor access
- Parking
- Space for event office
- Space for event staff apartments
- Ticket Office



MEETING SPACE SPECIFICATIONS

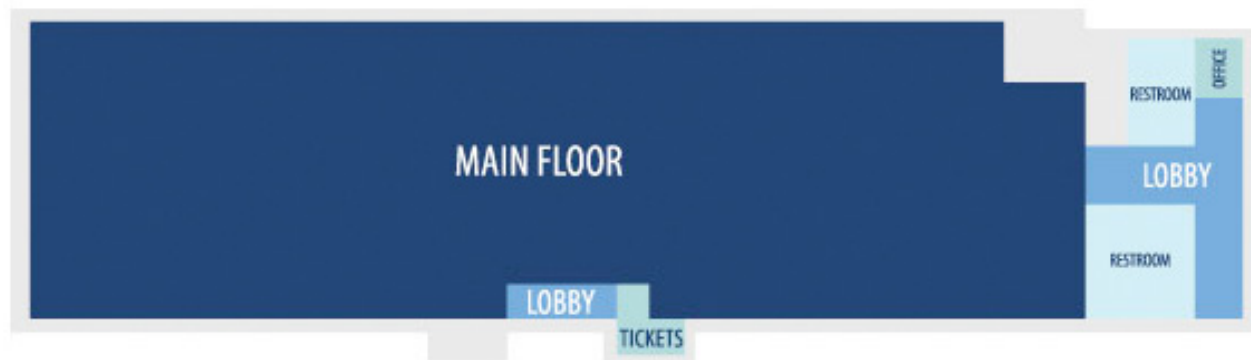
PIONEER OUR LAND PAVILION, *Indiana State Fairgrounds*

Description

The 16,335 sq. ft. Pioneer Our Land Pavilion is a great venue for small to medium-sized exhibit and trade shows, banquet events, seminars and meetings. In addition to the main floor, this column-free venue includes two (2) event offices and one (1) overhead door to simplify event move-in and move-out. Parking is also available near the Pioneer Our Land Pavilion.

Additional Features

- 1 Load-in Door with direct floor access
- Parking
- Space for event office
- Ticket Office



MEETING SPACE SPECIFICATIONS

SOUTH PAVILION, *Indiana State Fairgrounds*

Description

The 120,300 sq. ft. South Pavilion is an ideal venue for agriculture, consumer, exhibit and trade shows. This venue consists of four (4) halls that can be utilized individually or as a contiguous event space and has 12 overhead doors to simplify move-in and move-out. In addition to the four exhibit halls, South Pavilion also includes a 1,665 sq. ft. multi-purpose meeting room. South Pavilion also includes ticket offices, event offices, permanent concessions, and convenient parking.

Additional Features

Hall A

- 3 Load-in Doors with direct floor access
- Shower facilities
- Space for event office
- Space for event staff apartments

Hall B

- 1 Load-in Door with direct floor access
- Concessions
- Shower facilities
- Space for event office
- Space for event staff apartments
- Ticket Office

Hall C

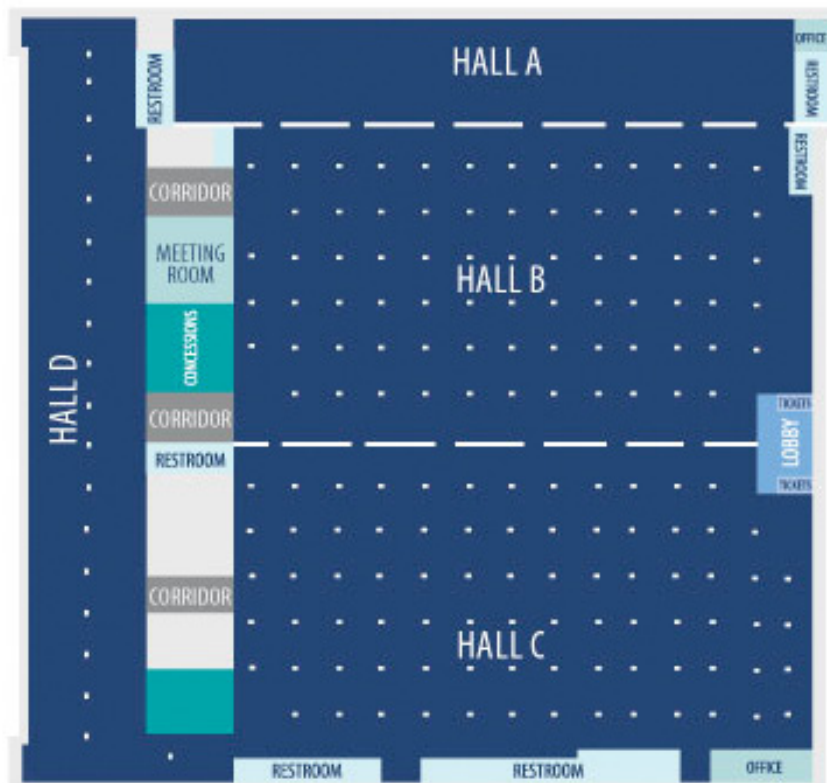
- 3 Load-in Doors with direct floor access
- Concessions
- Shower facilities
- Space for event office
- Space for event staff apartments
- Ticket Office

Hall D

- 2,040 sq. ft. show storage area
- 5 Load-in Doors with direct floor access
- Concessions
- Connectable access to the West Pavilion

MEETING SPACE SPECIFICATIONS

SOUTH PAVILION, *Indiana State Fairgrounds*



MEETING SPACE SPECIFICATIONS

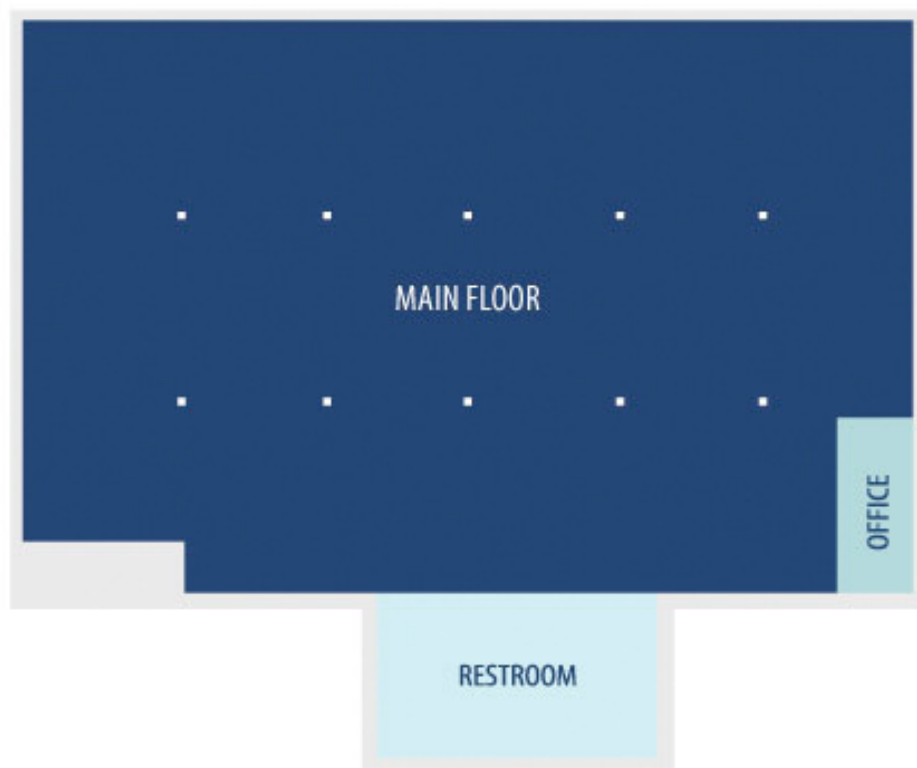
SOUTHWEST PAVILION, *Indiana State Fairgrounds*

Description

The 9,005 sq. ft. Southwest Pavilion is a great venue for events needing a smaller space. Located adjacent to the Exposition Hall, this venue is ideal for banquets, receptions, and meetings. The Southwest Pavilion also includes a show office and one (1) oversize door for move-in and move-out.

Additional Features

- 1 Load-in Door with direct floor access
- Space for event office
- Parking



MEETING SPACE SPECIFICATIONS

WEST PAVILION, *Indiana State Fairgrounds*

Description

The 147,040 sq. ft. West Pavilion is our largest event venue and serves as the focal point for some of the most prestigious consumer and trade shows in Indianapolis. The West Pavilion is ideal for agriculture, consumer, exhibit, sport, and trade shows, but can also host large banquet events. Featuring 15 overhead doors, move-in and move-out for events is a breeze in the West Pavilion. This venue also has permanent concessions, event office space, and two ticket offices for show use. This venue also directly connects to the Pepsi Coliseum and the South Pavilion through enclosed walkways, enabling shows to expand in size.

Additional Features

- 15 Load-in Doors with direct floor access
- Concessions
- Connectable access to the Pepsi Coliseum and South Pavilion
- Shower facilities
- Space for event office
- Space for event staff apartments
- Space for show storage
- Two Ticket Offices

