

# AT THE HEART OF THE UK'S LARGEST MANUFACTURING AND ENGINEERING CLUSTER

**Home to the UK's fastest growing regional economy, Manchester has established a strong reputation as an economic powerhouse and a competitive place to do business.**

Manchester has always been a pioneer of innovation, as the world's first industrial city with the first factories and industrial estates and where Ford built their first cars in Europe. Today, Manchester is at the heart of the UK's largest manufacturing and advanced engineering cluster; the Northern Powerhouse.

Whether you are looking for a laboratory for research and development or large-scale manufacturing, Manchester has the infrastructure in place to support innovation, business growth and commercialisation. From research and development, architectural services and civil construction; to

assembly, distribution and technical consultancy; our companies are well-established across the whole business life cycle.

Companies located here have access to some of the best global talent. There are over 115,000 students enrolled across five universities with over 29,000 studying STEM subjects accompanied by a skilled manufacturing workforce of nearly 114,000 people working in areas as diverse as aerospace, defence, electronics systems, software engineering and transport.

Located at the heart of the UK, Manchester has excellent connectivity with Europe and the rest of the world, providing companies with outstanding access to market. Manchester also offers businesses a diverse and sustainable talent pool, 20% lower operating costs than in the capital and outstanding quality of life for employees.

**CLIMATE ACTION LEADER**

CPD 2022

**THE UK'S BEST CITY TO LIVE**

The Economist

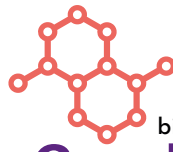
## ADVANCED MANUFACTURING & LOW CARBON HIGHLIGHTS



**£500m**  
invested in GM research centres



carbon neutral by **2038**



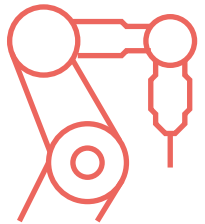
birthplace of **Graphene**



**largest**  
Europe's largest school of materials

**8,000+**  
advanced manufacturing companies in GM

**114,000**  
employees in the Advanced Manufacturing sector



A key location for the Government's **£100m** Innovation Accelerator blueprint for the UK



**£16.5bn** GVA



Home of the Energy Innovation Agency



**29,000+**  
studying STEM subjects in Greater Manchester

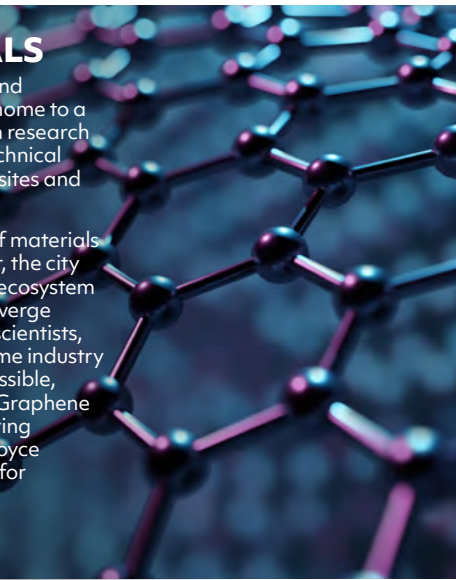
## IN GOOD COMPANY



## ADVANCED MATERIALS

Complementing the city's innovation and expertise in Graphene, Manchester is home to a robust advanced materials cluster with research strengths in sustainable packaging, technical textiles, surfaces and coatings, composites and light alloys.

In addition to Europe's largest school of materials based at The University of Manchester, the city is creating a core advanced materials ecosystem where businesses can collaborate, converge and drive innovation with academics, scientists, manufacturers and engineers to become industry leaders. At its core are a range of accessible, world-leading institutes: the National Graphene Institute (NGI), the Graphene Engineering Innovation Centre (GEIC), the Henry Royce Institute and BP's International Centre for Advanced Materials.



## LIGHTWEIGHTING

Manchester is at the heart of the largest aerospace cluster in Europe and the UK's second largest automotive cluster, offering easy access to end manufacturers, and is perfectly located for supply chain opportunities in the UK's automotive, aerospace and rail industries. With the city's ambitious plans to be carbon neutral by 2038 and the birthplace of Graphene, Manchester is the ideal location to explore lightweight materials for the low carbon transport of our future.



## LOW CARBON

With an ambitious science-based target to be carbon neutral by 2038 – 12 years ahead of the UK's target and home to world-leading research facilities such as Manchester Metropolitan's Manchester Fuel Cell Innovation Centre, Salford University's Energy House Laboratories, and the Energy Innovation Agency, Manchester is committed to transforming investible ideas into real world low carbon solutions spanning energy, transport and much more.

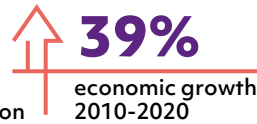
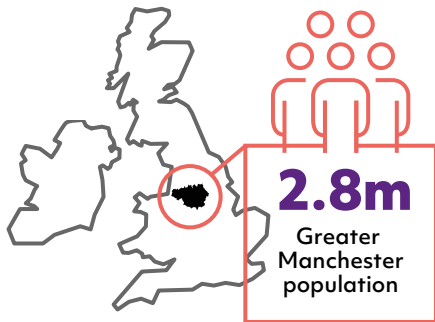
## FOOD AND DRINK

Manchester has a food and drink manufacturing and related services cluster with hundreds of companies including Kellogg's, Heineken, Kraft Heinz and McVities which has enabled the city-region to establish a strong reputation as the "super centre" for sustainable packaging design and manufacture. With access to a large food and drink specialised talent pool, the Manchester Food Research Centre, world-leading advanced materials research institutes and the North of England's Robotics Innovation Centre at Salford University, the city-region is well placed to help shape the future of this sector.

## INDUSTRY 4.0

Since the days of the Industrial Revolution, Manchester has played an important role in shaping the UK's economy and the city-region continues to be a place where creativity and technology are jointly driving the next wave of innovation. Now home to the Advanced Machinery and Productivity Institute (AMPI) in Rochdale and PrintCity at Manchester Metropolitan University, Manchester offers leading expertise in areas such as robotics, additive manufacturing, virtual and augmented reality, the Internet of Things and machine learning. This combined with world class expertise in cyber security positions Manchester as a key location for companies developing Industry 4.0 technologies and offers access to large market opportunities.

## MANCHESTER KEY FACTS



## GET IN TOUCH

MIDAS, Manchester's dedicated inward investment agency, offers an extensive, free and confidential package of advice and assistance for potential investors and location consultants. MIDAS' services are available to companies of all sizes that wish to relocate to or expand within Manchester.

To find out how we can help you, contact



**Rachel Eyre**  
Head of Advanced Manufacturing and Low Carbon

✉ [rachel.eyre@midas.org.uk](mailto:rachel.eyre@midas.org.uk)  
☎ +44 (0)161 237 4470  
🐦 @MIDAS\_AM  
🐦 @MIDAS\_MCR  
🌐 [investinmanchester.com](http://investinmanchester.com)



**NORTHERN POWERHOUSE**