

# UK'S TOP DIGITAL TECH CITY

**Home to the UK's fastest growing regional economy, Manchester has established a strong reputation as an economic powerhouse and a competitive place to do business.**

Manchester is located at the heart of the UK, it is the global gateway to the north, and has excellent connectivity with Europe and the rest of the world, providing companies with outstanding access to market. Manchester also offers businesses a diverse and sustainable talent pool, 20% lower overall costs than in the capital and outstanding quality of life for employees.

For more than 250 years, Manchester has been creating and shaping the future. Birthplace of the Industrial Revolution and the first stored program computer, the city-region continues to be a place where creativity and technology are jointly driving the next wave of innovation.

The breadth and strength of Manchester's business environment provides endless opportunities for digital and technology companies to collaborate with and sell into non-tech firms that are going through digital transformation. From financial services firms that are collaborating with start-ups and SMEs to improve client services to healthcare providers using AI and data to better predict patient outcomes, as well as manufacturing companies that are looking to tech to improve efficiencies; Manchester offers unrivalled market opportunities.

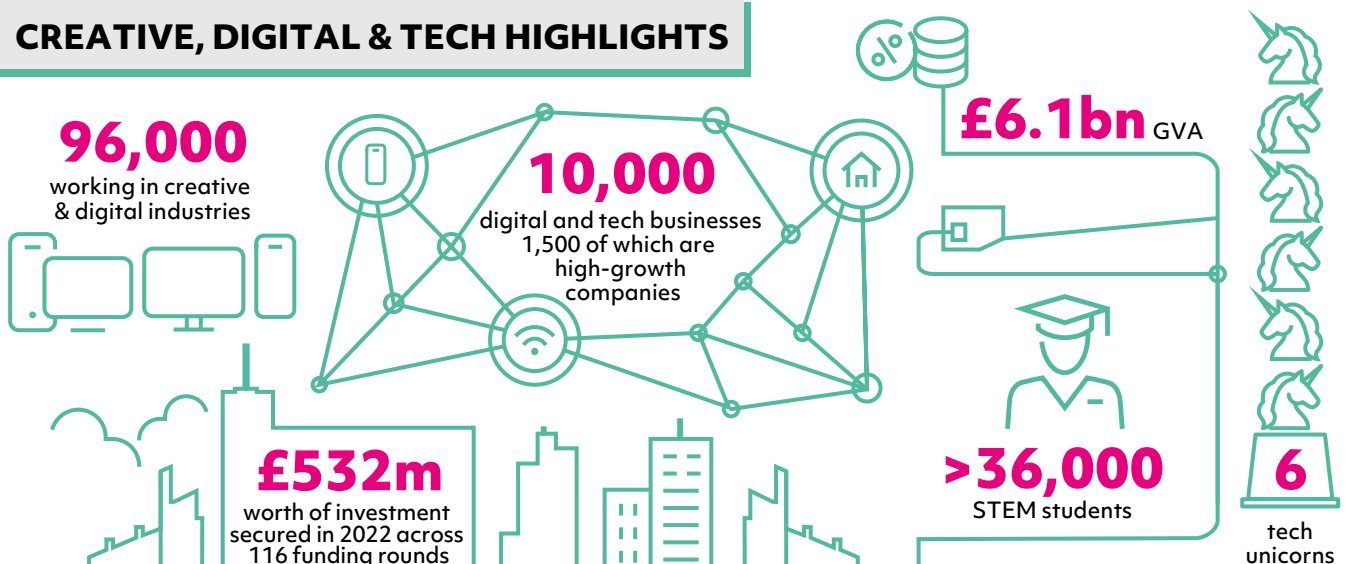
**#1 of 15  
TECH CITIES**  
(Exl. London)

CBRE

**THE UK'S BEST  
CITY TO LIVE**

The Economist

## CREATIVE, DIGITAL & TECH HIGHLIGHTS



## IN GOOD COMPANY



## CYBER SECURITY

Greater Manchester presents a unique opportunity for Cyber as demonstrated by the UK government's intelligence, security and cyber agency, GCHQ establishing a strategic hub in the city. Located just an hour from the city-region is the UK government's new National Cyber Force (NCF) which is set to receive more than £5 billion of investment before 2030. Manchester is also at the heart of the nation's North West Cyber Corridor. The Manchester Digital Innovation and Security Hub (DiSH) launched in 2022, brings together industry, academia and the public sector to identify digital security threats and co-create solutions. The city-region has nurtured homegrown digital security companies including NCC Group and Secarma, and has attracted established cyber divisions of global defence companies such as Raytheon, BAE Systems AI and Northrop Grumman, as well as consulting firms including KPMG to establish itself as a location committed to world class cyber security innovation and collaboration.



## ECOMMERCE

Manchester has seen phenomenal growth in the number of online retailers based in the city-region, with complementary growth in the technology supply chain and support ecosystem. Manchester is home to the UK's greatest concentration of eCommerce start-ups as well as six homegrown unicorns including: The Hut Group, AO.com and Boohoo. The city-region provides access to specialists in front and back-end development, data analytics, marketing and PR. Manchester's central location and outstanding connectivity make it easy for eCommerce companies to ship goods nationally and globally, making it the ideal location for eCommerce companies to thrive.



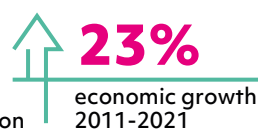
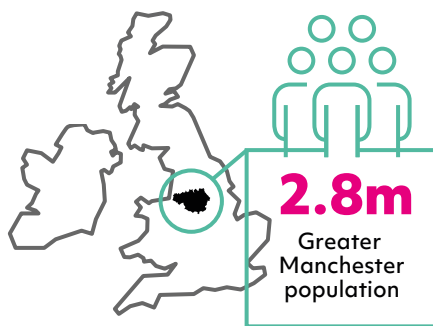
## GAMING AND CONTENT CREATION

Manchester has a fast-growing gaming sector, with companies such as: Team 17, Smashmouth Games, Cloud Imperium Games, Rezzeil and Epic Games, calling the city-region home. Manchester is developing the next generation of gaming designers and digital storytellers, with five of its universities offering specialist gaming and related courses. In 2021 Unity's only UK Training Centre of Excellence opened in Manchester. 2022 saw the launch of HOST Esports Studio in the heart of MediaCityUK, offering a dedicated training space focused on fostering future gaming talent, and supporting esports development, helping to boost the growing immersive tech sector in North West of England. Alongside gaming and immersive tech, Manchester has been nurturing the growth of the animation sector for over 50 years with companies such as The Farm, McKinnon & Saunders and Flipbook Studios choosing to grow their operations here.

## AI AND DATA

Manchester has a world leading AI capability with a strong academic AI community and pipeline of talent. The city-region is home to a growing number of AI companies including Dream Agility, Digital Bridge, Futurecorn and Peak. Organisations including GCHQ and NCSC have also chosen to locate and grow AI and data science teams in Manchester. Three of the city-region's universities have established research groups working in AI and data science, achieving world leading and internationally excellent work in the field. The University of Manchester is an academic partner with the Alan Turing Institute, the leading body for data science and AI in the UK. In 2020, the city-region launched the Greater Manchester AI Foundry, a £6 million project combining business innovation and AI research from four universities to help SMEs innovate.

### MANCHESTER KEY FACTS



## GET IN TOUCH

MIDAS, Manchester's dedicated inward investment agency, offers an extensive, free and confidential package of advice and assistance for potential investors and location consultants. MIDAS' services are available to companies of all sizes that wish to relocate to or expand within Manchester.

To find out how we can help you, contact



**Kate Temperley**  
Head of Business Development – Creative, Digital and Technology

✉ [kate.temperley@midas.org.uk](mailto:kate.temperley@midas.org.uk)  
☎ +44 (0)161 237 4470  
🐦 @MIDAS\_CDT /  
🐦 @MIDAS\_MCR  
🌐 [investinmanchester.com](http://investinmanchester.com)



**MIDAS**

[investinmanchester.com](http://investinmanchester.com)

**NORTHERN POWERHOUSE**