

GROWING YOUR ADVANCED MANUFACTURING BUSINESS IN MANCHESTER, UK

**WHAT BECOMING PART OF OUR INVESTMENT
ZONE COULD MEAN FOR YOUR BUSINESS**



DEANSGATE - MANCHESTER

HELLO FROM GREATER MANCHESTER

Manchester is a unique city-region with global ambitions. The ten boroughs of Greater Manchester make up an evolving ecosystem where science and industry meet community and culture; and where industrial innovations from atomic theory to the first programmable computer have shaped the world we know today.

Now identified as a UK Investment Zone, we're taking the Mancunian worker bee approach for getting things done. A diverse region, rich in talent with a proven

reputation for innovation, we don't rest on our laurels. It's why businesses from start-ups and scale-ups to global industry leaders across a variety of industries have found their home here.

This prospectus sets out our plans for Greater Manchester's Investment Zone and invites you to join us where ideas become reality.

GREATER MANCHESTER HAS A PROUD INDUSTRIAL HERITAGE AND WE ARE POISED TO WRITE THE NEXT CHAPTER OF THIS STORY.

For over 200 years Greater Manchester has been a pioneering place – driving social and cultural progress, as well as scientific and technological innovation. This is a legacy we are proud to continue.

Our city-region played a pivotal role in the first industrial revolution, harnessing the power of steam, water and electricity to become the first global manufacturing centre. More recently, it's where Nobel-prize winning researchers isolated graphene, the 2D material that is just one atom thick.

Over the past two decades, Greater Manchester has grown faster than the UK economy and we are ready to go further. Using powers devolved to us by government, we are transforming our transport and skills systems so they better respond to the needs of our city-region's economy. We complement this with well-established partnerships – between local government, businesses, universities and research institutions – and a sustained focus on our sector strengths.

Greater Manchester's Investment Zone is the next step in that journey, building on our considerable strengths in advanced materials and manufacturing with a programme of targeted investments and interventions. At Sister and Atom Valley, we will provide funding to unlock two of the city-region's most transformative regeneration projects. We will help businesses take advantage of the technologies, facilities and expertise that already exist within our universities, create an investment fund so that smaller

companies can access the funding they need to grow, and establish programmes to help people upskill and reskill.

Overall, the Investment Zone will provide £160m over 10 years to support the sector's growth. Our ambition is to create tens of thousands of jobs and leverage over £1 billion of private sector investment over the next 10 years.

But just as important to this ambition is ensuring the Investment Zone responds to the economic disparities – both between UK regions and within Greater Manchester – that hold us all back. It is vital that the benefits and opportunities we create are accessible to everyone in our city-region, regardless of your background or where you live.

Greater Manchester is on the brink of something special. We welcome businesses who share our vision and want to play a part.



ANDY BURNHAM

MAYOR OF GREATER MANCHESTER

GREATER MANCHESTER IS A WELCOMING PLACE WITH A THRIVING ECONOMY.

The Investment Zone will help us drive further economic growth – creating over 30,000 jobs and leveraging more than £1 billion of private sector investment.

Our advanced materials and manufacturing sector comprises thousands of innovative companies, a highly skilled talent pool and world-leading research – but it also complements our other sector strengths, like low carbon technologies and life sciences. How we make things, and the materials we use to make them, are fundamental to the global economy. This is a field where Greater Manchester can become a hub of international significance.

Greater Manchester's Investment Zone will fund projects and programmes that pull strands together into one ecosystem, connecting research centres



CLLR BEV CRAIG

LEADER OF MANCHESTER CITY COUNCIL AND GREATER MANCHESTER LEAD FOR ECONOMY, BUSINESS AND INCLUSIVE GROWTH

at the heart of the city centre to the businesses innovating in our outer boroughs. By bringing together two of the city-region's biggest regeneration projects – Sister and Atom Valley – we will provide a pathway for researchers to commercialise ideas and spaces for businesses to spin out and scale up. Beyond these sites, the adoption of Places for Everyone means that Greater Manchester has a long-term plan for supporting growth.

We will help our existing business base to adopt new technologies and become more efficient, building on the success of the Made Smarter programme. We have established a revolving investment fund to provide much-needed capital to small manufacturing and materials businesses. We are backing university-led translational research programmes that will help specialist businesses innovate.

But this isn't just about growth and jobs, as important as they are. Who growth benefits is just as significant, as are our net zero ambitions. Sustainable materials and a smart, efficient manufacturing sector are at the heart of a net zero economy: our Investment Zone will invest in the people, companies and organisations here creating and developing them.



MAYFIELD DEPOT - MANCHESTER

"The North of England, with Greater Manchester at its heart, is ready to lead a fourth industrial revolution. Advanced materials and manufacturing are sectors where the region has a globally competitive edge, and by complementing this with ambition and investment, Greater Manchester can create an industrial cluster of global significance."



JUERGEN MAIER CBE

CHAIR OF GREAT BRITISH ENERGY, CO-FOUNDER OF VOCL, AND FORMER CHIEF EXECUTIVE OF SIEMENS UK



NOMA - MANCHESTER

WHAT IS THE GREATER MANCHESTER INVESTMENT ZONE?

Investment Zones are areas across the UK where central and local government will work with businesses, higher education institutions, and other local partners to develop growth opportunities for investment and innovation.

Greater Manchester's Investment Zone will focus on the advanced materials and manufacturing sector, and over the next 10 years will invest £160 million in projects that increase growth and innovation. Located at the heart of the Northern Powerhouse, Greater Manchester is just 2 hours 8 minutes

to London by Rail. The Liverpool City Region Investment Zone to the West, and the West Yorkshire and South Yorkshire Investment Zones to the East are easily accessible. Through the Investment Zone Greater Manchester aims to create 32,000 jobs and attract £1.1bn in private sector investment.

The first phase of funding will deliver £80m of activity over the next 5 years, focused on local infrastructure, research and innovation, local enterprise and business support, skills, and planning and development.

WHAT DOES GREATER MANCHESTER'S ADVANCED MATERIALS AND MANUFACTURING INVESTMENT ZONE MEAN FOR BUSINESSES?

From receiving dedicated support for setting up in the region to applying for direct funding to support business growth, companies choosing to expand into the Greater Manchester Investment Zone will be well positioned to take their business to the next level and become part of this thriving region.

Greater Manchester has a reputation for building deep and meaningful relationships with private sector partners that deliver long-term projects. The city-region benefits from strong local leadership which gives investors the confidence to deliver.

"Longstanding partnerships between academia, the public and private sectors, and an expansive innovation ecosystem are what set Greater Manchester apart. Our city-region can lead the way in translating innovation into economic growth."



LOU CORDWELL OBE

CHAIR OF THE GREATER MANCHESTER BUSINESS BOARD

AN ADVANCED MATERIALS CITY-REGION

The UK's fastest-growing regional economy, Greater Manchester lies at the heart of the UK's largest manufacturing and advanced engineering cluster and is an integral cog in the Northern Powerhouse.

The city-region's advanced materials and manufacturing ecosystem is where businesses collaborate to drive innovation; where scientists, industrialists, and civic leaders work together to develop advanced products and services.

- Advanced materials make up the components and machines that move the modern world. Engineered to conduct, insulate, withstand, uphold, and otherwise, they underpin manufacturing, advanced coatings and polymers helping us to produce better and more sustainable goods such as coatings, polymers, textiles, metals and composites.
- Advanced manufacturing covers innovative technologies and specialisms for producing goods. There are over 500 advanced materials and manufacturing businesses in Greater Manchester, which operate in a spread of high-value sub-sectors including aerospace, automotive, food and drink.

Greater Manchester's wider advanced manufacturing sector is made up of 4,200 businesses employing 52,500 and generating £4bn in economic output. The city-region is built on manufacturing innovation and continues to power its economy today.

FROM SPARKS...

The city-region has a reputation for innovation. Home of the Industrial Revolution, Greater Manchester was the world's first modern manufacturing city, where Ford built their first cars in Europe. To the north of the city, the borough of Rochdale is the birthplace of the co-operative movement. This industrial legacy and Greater Manchester's current growth trajectory make this fertile ground for businesses.

... TO BLAZING A TRAIL FOR BUSINESS

Before the Investment Zone programme, the UK government had already recognised the importance of Greater Manchester's strengths in advanced materials and manufacturing, investing part of the £33m Innovation Accelerator funding in the sector.

Clustered around the city-region's universities, world-leading research and development assets support knowledge

in engineering, digital, and technology. The interactions between researchers and businesses help commercialise and develop ideas.

To the north of the city-region lies a connected innovation space where businesses have ample room to grow at scale and collaborate across a dynamic

ecosystem – in turn providing a valuable societal contribution to the sector by harnessing skills through accessible employment opportunities.

From lab to factory, in warehouses and offices; Greater Manchester is where both new and incoming firms can establish themselves.



BLAZING A TRAIL:



SCIENCE

Splitting the Atom



INDUSTRY

Rolls met Royce and went into business together



SOCIETY

Co-operative movement founded in Rochdale



TECHNOLOGY

First computer built

RESEARCH & DEVELOPMENT

Home to a range of specialist research communities where businesses and academic institutions collaborate and drive innovation, Greater Manchester's 5 universities host a world-leading

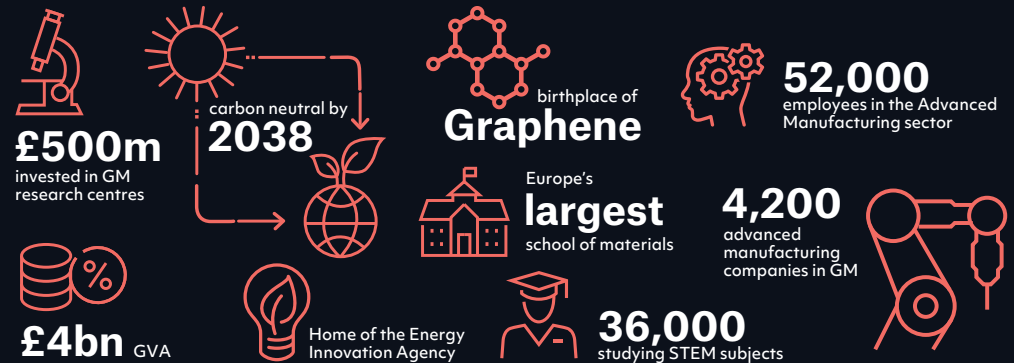
sustainable advanced materials research and development innovation base, which hold immense potential for translation into multi-sector industrial processes.

TALENT AND EXPERTISE

Across the universities, 36,000 students study STEM subjects and the city-region's skilled advanced manufacturing workforce of 52,500 people work within a range of areas, with a growing number opting to evolve their knowledge and experience through degree apprenticeships and college courses.

As one of the UK's key manufacturing clusters, the region has deep and diverse expertise in the advanced manufacturing sector ensuring that companies can access the region's knowledge, skills and state of the art equipment as well as opportunities to innovate and collaborate with both large companies and SMEs.

KEY FACTS



Click on the titles to find out more about Greater Manchester's 5 universities.

RESEARCH & DEVELOPMENT

The background is a solid dark navy blue. It features several thin, bright red horizontal lines of varying lengths. A single red circle is positioned in the center of the page. The text 'RESEARCH & DEVELOPMENT' is located in the top left corner, with 'RESEARCH &' in white and 'DEVELOPMENT' in red. A short paragraph of white text is positioned below the title on the left side. In the bottom right corner, there is a short paragraph of white text. The overall aesthetic is modern and minimalist.

The region's advanced materials and manufacturing cluster is vast with specialisms including sustainable packaging, technical textiles, surfaces and coatings, composites, and light alloys, not to mention...

Click on the above titles to find out more about the advanced materials and manufacturing specialisms.

IN GOOD COMPANY

Research commissioned by the city-region's Graphene and Advanced Materials & Manufacturing Alliance (GAMMA) has identified over 500 companies operating in its advanced materials and manufacturing sector

with a thriving innovation community including Rolls Royce SMR, Siemens, BAE Systems, Raytheon, Thales, Hydrograph, Werit, Kadant, Holroyd, Hyde Group, and Jaguar Land Rover.

"Graphene is now being used in brain implant trials which could eventually lead to treatment of Parkinson's and strokes. But it's not just medicine; our University's materials innovation expertise spans all sectors, enabling companies to accelerate lab-to-market development, and launch transformative technologies to address challenges from net zero to new homes."



PROFESSOR JAMES BAKER

CEO GRAPHENE@MANCHESTER

CONNECTION & COLLABORATION

The position of the region's extensive manufacturing expertise along the M62 corridor means there is a huge opportunity to access and connect with a variety of companies across the North West and beyond. South Yorkshire can be reached from Greater Manchester within an hour, its own manufacturing strengths build a regional supply chain and a pool of knowledge and expertise. With both large organisations and SMEs, as well as those in complementary industries, there are frequent opportunities to drive productivity and growth cross-sector, collaborating with Health Innovation, Green Industry and Digital.

Businesses in the city-region also receive additional support from world-leading research institutes with a strong track record of industry collaboration, plus extensive business support available for companies of all sizes. These include Centre of Expertise in Advanced Materials and Sustainability (CEAMS), Advanced Machinery and Productivity Institute (AMPI), Centre for Sustainable Innovation and BP's International Centre for Advanced Materials, plus Henry Royce Institute, the Manufacturing Institute, Business Growth Hub and Made Smarter which is transforming competitiveness and productivity of the manufacturing base in the region.



THIS IS GREATER MANCHESTER

A PLACE TO WORK, LIVE AND PLAY

Across ten boroughs, the city-region consists of an extensive economy where businesses and institutions work together, collaborate on research, and grow new industries.

BOLTON

BURY

MANCHESTER

OLDHAM

ROCHDALE

SALFORD

STOCKPORT

TAMESIDE

TRAFFORD

WIGAN

Greater Manchester has a global reputation for its creative, industrious, and friendly communities. Traditional market towns, museums and galleries stand alongside green spaces and the city centre's bustling bars, restaurants

and entertainment venues. The quality of life attracts more people every year and is the reason almost 50% of university graduates choose to stay beyond their studies.

**TOP LARGE UK CITY FOR ECONOMIC
POTENTIAL 2024 – FDI INTELLIGENCE**

GREATER MANCHESTER'S KEY STRENGTHS

Click on the titles below to discover more about what makes this thriving city-region special.





SALFORD QUAYS - SALFORD

A GROWING ECONOMY

Over the last decade Greater Manchester's economy has grown at a faster rate than the UK. Economic productivity is improving, and more people and businesses are moving here. The city-region's growing economy has transformed the skyline and Greater Manchester consistently has the highest levels of city centre construction in the country. Boroughs in the north of the city-region host specialist machinery and textiles supply chains. Atom Valley, covering sites across Bury, Oldham and Rochdale, is a vast innovation mega-cluster which plays a pivotal role in making Greater Manchester one of the best places in the world to grow. In the west and south new sustainable industries are growing quickly.

There are manufacturing and materials clusters across Greater Manchester, made up of businesses specialising in a range of technologies.

- East and the north of the city-region - coatings materials and composites clusters
- North and west of the city-region - technical textiles and advanced materials
- Oldham - Oldham is leading the fight against climate change, promoting sustainability and environmental stewardship. Oldham Council's

Local Area Energy Plan sets out a £5.6bn investment opportunity in low carbon infrastructure, supporting significant business growth and skills development. The Oldham Green New Deal Delivery Partnership initiative will set up a commercial JV with a major energy infrastructure partner, in a governance structure which also puts residents at the heart of energy planning.

- Rochdale - automation and advanced machinery, materials, and manufacturing
- Region-wide - metals, polymers and technical textiles, automation, and measurement
- Central Manchester - strongest cluster seeing high density of carbon, electronic, emerging, and optical materials, and a high concentration of data analytics and data services companies

121,000 students across 5 universities

A leading digital city-region with globally recognised AI and cyber clusters

Greater budget control enabling projects to move at pace through our decentralised powers

Investment into:

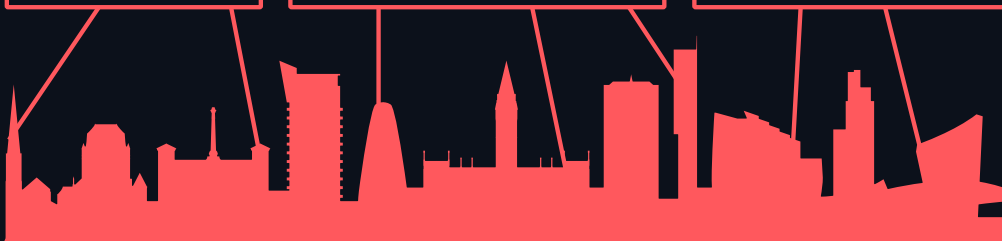
- Skills
- Transport
- Housing
- Business Support
- Public service reform

Green investment opportunities to meet sustainable goals including becoming carbon neutral by 2038

A city-region population of 3m (1.8m within working age)

£78.7bn largest GVA outside London with up to 20% lower operating costs than the capital.

Europe, USA and the Middle-East - global business destinations are just a flight away with over 200 world-wide locations serviced by Manchester International Airport.



A LONG-TERM VISION

Greater Manchester's Investment Zone programme will remove obstacles to growth and innovation. Funding projects and interventions across the city-region, the Investment Zone aims to make Greater Manchester the UK's workshop for complex and valuable products.

The programme has two priorities for advanced materials and manufacturing:

To help researchers grow viable businesses from useful ideas

To support businesses in adopting new technologies, improve their products or innovate to create new ones

Combined, these projects will:

- Commercialise research by:
 - **BUILDING** new specialist facilities
 - **PROVIDING** subsidised finance
 - **CONNECTING** businesses with university experts
- Advance the region's business base by:
 - **SUPPORTING** businesses to use digital systems and robotics
 - **COMMERCIALISING** advanced sustainable materials
 - **TRAINING** local people of all ages to access skilled jobs
 - **PREPARING** large employment sites where growing businesses can scale up



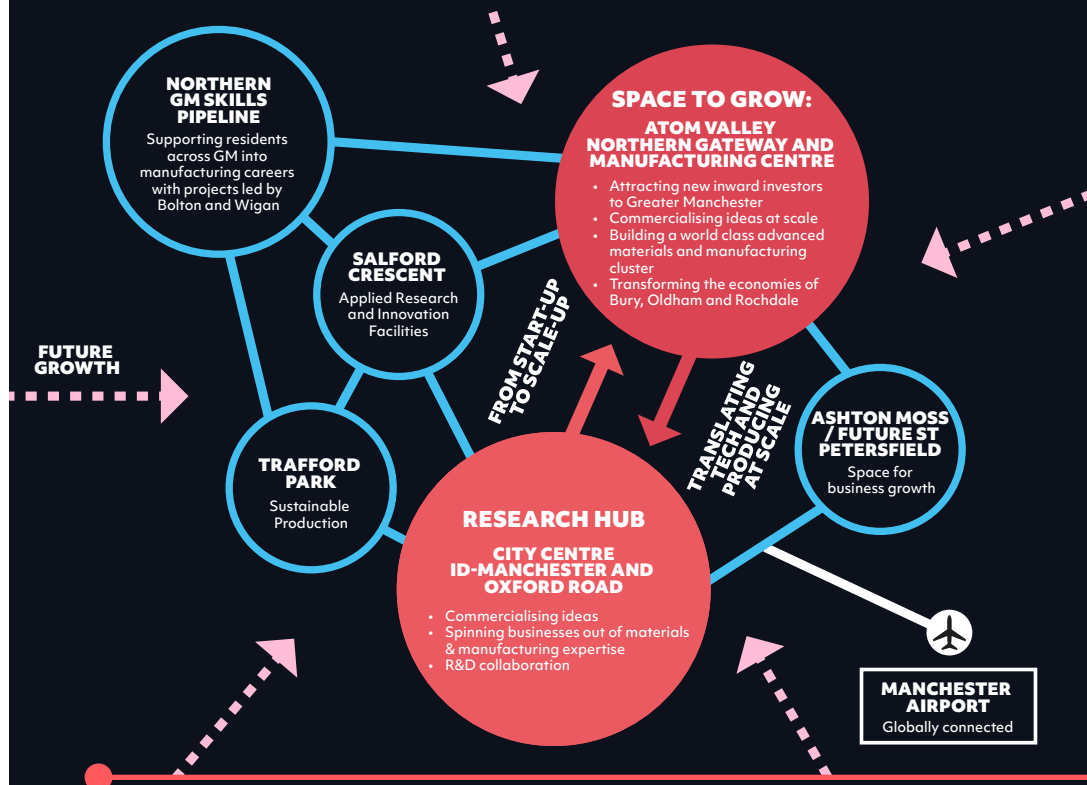
STOCKPORT INTERCHANGE - STOCKPORT

CONNECTED FOR LONG-TERM GROWTH

Located at the very centre of the UK and the North of England, Greater Manchester is one of the best connected and most accessible city-regions in the UK.

Across its ten boroughs, Greater Manchester's Investment Zone includes two key investment locations: Sister and Atom Valley.

In these locations Greater Manchester can retain the growth of business rates for 25 years, to reinvest into the programme, supporting the region's sustainable long-term growth of advanced materials and manufacturing.



Over the next five years, Greater Manchester will invest £80m in projects across the city-region, growing its advanced materials and manufacturing sector:

Click on the titles below to discover more.

GROWTH FINANCE

**SKILLS
DEVELOPMENT**

**PLANNING &
DEVELOPMENT**



INVESTING IN ATOM VALLEY

Atom Valley is helping to shape a greener, fairer, and more prosperous future. This long-term, large-scale project will play a key role in transforming the economy of North-east Greater Manchester as well as the wider city-region.

Covering sites across Bury, Oldham and Rochdale, Atom Valley's economy closely tied both to central Manchester and West Yorkshire, will be an advanced materials, manufacturing, and machinery innovation mega-cluster – a place where materials and manufacturing businesses can grow at scale.

Atom Valley will create significant development opportunities to generate inclusive economic growth with a focus on net zero and sustainability. It has potential to provide 20,000 new jobs and 7,000 new homes through public-private partnership. It is a designated Mayoral Development Zone – one of the first of its kind in the UK- uniting local stakeholders to unlock funding and drive forward progress.

A vast innovation cluster, covering 17m sq ft of flexible employment space primed for development, its size and scale makes it the ideal base for bold, ambitious and globally-minded businesses.

Atom Valley has 3 key development locations:

- Northern Gateway
- Stakehill
- Kingsway

Through the Investment Zone programme, Greater Manchester will invest in infrastructure that kickstarts the development of this super cluster and setting up organisations to support the translation of modern technologies and research to small and medium size businesses.

ATOM VALLEY AT A GLANCE



7000
homes



20,000
jobs



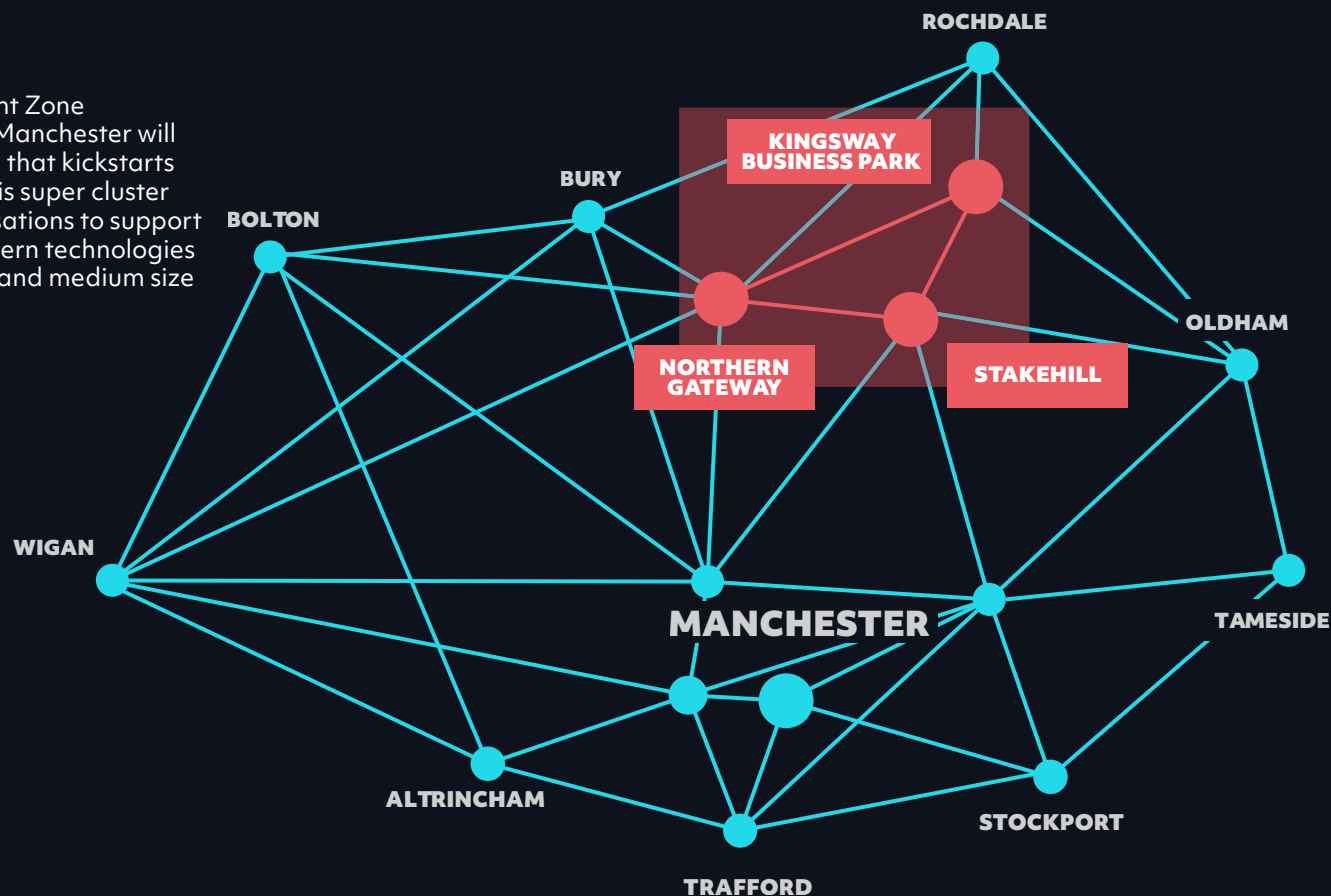
17
million square feet



3
purpose-built innovation hubs:
AMPI, CEAMS, SMMC



3
boroughs: Rochdale,
Bury, Oldham



ACCELERATING DEVELOPMENT

SUSTAINABLE MATERIALS & MANUFACTURING CENTRE (SMMC)

The Sustainable Materials & Manufacturing Centre (SMMC) located on Kingsway Business Park in the heart of Atom Valley, will support businesses from the beginning of their journey. Operating from a purpose-built technology centre within the Kingsway Business Park, the SMMC supports the delivery of both Atom Valley and Sister's research and innovation programmes. This will progress businesses across the wider Greater Manchester region, making a significant contribution to developing its advanced materials and manufacturing cluster.

Through the Investment Zone programme, Greater Manchester will contribute £10 million investment towards the cost of SMMC, completing the development of the Centre and fitting it out with advanced sustainable technologies. These will enable businesses across the region to understand and adopt new techniques and technologies for their operations, entering new and valuable supply chains.

The Centre, which will be located at the Metrolink tram stop at Kingsway Business Park, will include laboratory space, workshops, metrology space, design and analysis studios, a lecture theatre, meeting rooms, flexible workspace for start-ups, office space for manufacturers and a café. It will be an inherent part of

an existing ecosystem which supports the development and commercialisation of smart intelligent machinery and advanced sustainable materials and Made Smarter technologies. SMMC will host a range of Research and Technology organisations, RTOs and programmes that will support the Greater Manchester Mayor Andy Burnham's ambitions to build a world class cluster of advanced materials and manufacturing in Atom Valley.

A range of programmes are already being delivered; the Advanced Machinery and Productivity Institute (AMPI) drives innovation for the UK's advanced machinery manufacturers to meet the challenge of developing modern technology and emerging markets; The Centre of Expertise in Advanced Materials and Sustainability (CEAMS), aims to build a collaboration between world class partners including the University of Manchester, to help and support businesses to commercialise a sustainable material(s) and / or develop an innovative idea to make the materials they use sustainable.

CEAMS acts as a bridge between academic research expertise, commercial exploitation and scale-up. It helps companies overcome problems, invent new processes, adopt new materials and re-use existing materials.



SMMC - KINGSWAY

A GROWTH LOCATION

NORTHERN GATEWAY

The Northern Gateway site is the most significant development sitting within Atom Valley. Spanning 13m sq ft across Bury and Rochdale, Northern Gateway occupies a strategic location between the M60, M62 and M66 motorways and has well-connected local links.

The Investment Zone programme will invest £10m in road infrastructure at the site, preparing it for development and unlocking the space for materials and manufacturing businesses to grow at scale.

The site presents two inter-related strategic site allocations:

- Heywood / Pilsworth
- Simister / Bowlee

The site will be complemented by active travel and public transport routes that will link existing and new communities to employment areas. A green corridor will run through the site allowing nature and sustainability to sit at its very heart.

Northern Gateway Strategic Development Vision

Northern Gateway will be a world-class business community that will help to drive inclusive growth and economic prosperity for Atom Valley and Greater Manchester by becoming the largest and

most accessible employment opportunity in the region, delivering:

- significant investment into a range of industry sectors at both scale and pace, supporting the region's economy and resilience;
- a dynamic and thriving innovation hub for advanced materials and manufacturing, building on Greater Manchester's world leading strengths in this area;
- a vibrant and dynamic employment ecosystem where businesses and communities thrive, supported by sustainable transport connectivity and green and blue infrastructure networks;
- flexibility and responsiveness to market demands and opportunities; and
- a truly integrated approach to partnership working with industry, universities, research partners and institutions, that will develop and harness the skills for the local workforce, establishing a lasting legacy of excellence in training and skills, empowering existing communities as well as attracting and retaining top industry talent.

The Destination for Distribution

A new development offering Design & Build opportunities for both manufacturing and distribution businesses



HPARK

The first phase of Northern Gateway is ready to go; it is a 120-acre industrial and logistics development providing up to 1.45m sq ft of space with the potential to create more than 2,400 new jobs. This makes it an ideal proposition for businesses looking to locate in the UK and Atom Valley.

Work is also underway on almost 400 of the 1000 new homes to be delivered under the South Heywood Masterplan - a long-term regeneration programme which will also see new retail and community facilities including a sports village.

SUSTAINABLE AT SCALE

STAKEHILL

Sitting between The Northern Gateway and Kingsway, Stakehill is located in Oldham and lies just 1 mile south of the M62 motorway. The site offers a range of modern and refurbished units for immediate occupation.

Suited to warehousing and industrial uses, Stakehill is one of the premier distribution locations in the North-West of England. Whilst its facilities feature integrated high-quality offices, roller shutter door access and large yard space, it's uniquely positioned with a Business Improvement District on the estate to forge an environment built on community and collaboration.

Properties range from 5,429 to 108,000 sq ft, with existing businesses including DHL, Yodel, O2 and Boots.

The site will deliver around 150,000 sqm of high quality, adaptable, employment floorspace within a green employment park setting, with a focus on suitable provision for advanced manufacturing and other key growth sectors, taking advantage of its accessible location and proximity to Junction 20 of the M62, and complementing the other opportunities within the North East Growth Corridor.

It will also deliver around 1,680 high quality homes in a 'garden village' concept, prioritising cycling and walking.

Offering residents a unique living experience, reducing journey times and car dependency, this strategic blueprint is not just about building spaces; it's about crafting a legacy of sustainability and progress.

THE LOCAL INDUSTRIAL DECARBONISATION PLAN

Stakehill is spearheading the decarbonisation of industrial estates and helping to drive Rochdale's green ambitions.

Government and Innovate UK is funding a Local Industrial Decarbonisation Plan (LIDP) at Stakehill Industrial Estate, setting out a plan to identify and use energy-saving solutions across the business park. As a flagship location for the scheme, it will be a valuable green proposition for businesses looking to locate in the area.

A consortium made up of SSE Utilities Solutions Ltd, the Energy Innovation Agency, Rochdale Borough Council, Stakehill BID Ltd, the University of Manchester, and UBS will explore innovative ways to drive down emissions on the site and help meet Greater Manchester's ambitions to be net zero by 2038.

Read more about sustainability as part of the Greater Manchester Investment Zone [here](#).



PROVIDING BUSINESS SOLUTIONS

KINGSWAY

This 3.4m sq ft location is situated at Junction 21 of the M62 motorway. Kingsway's position makes it one of the best located business parks in the UK with direct motorway links unlocking Manchester city centre, Liverpool, Yorkshire and further afield to Europe.

The site offers both ready-to-let industrial units, as well as opportunities for design and build, with space ranging

from 40,000 to 200,000 sq ft. Kingsway is already home to existing specialisms like manufacturing, warehousing, distribution, and logistics.

A dedicated Metrolink tram station gives employees and customers quick and direct access to the city-region, with a network of cycle, walking and bus routes nearby.



INVESTING IN SISTER

MAKING IDEAS MATTER

Sister is the largest city centre innovation project in Europe and will play a key role in catalysing Greater Manchester's advanced materials and manufacturing sector.

Based in the heart of the city of Manchester and set over 4m sq ft, Sister will be recognised internationally as one of the world's leading applied innovation districts. A Joint Venture between The University of Manchester and Bruntwood SciTech, Sister will provide resilient and sustainable growth for the area, creating over 10,000 jobs and delivering over 2m sq ft of office and innovation space to house spin-outs, start-ups, scaling SMEs and global businesses new to the region. Alongside this, over 1,500 new homes, retail and leisure spaces, a civic square and a variety of nature-led public spaces will be developed.

A £1.7bn investment into the city, Sister will be a hub for businesses and organisations looking to advance research and development in specialist sectors including digital tech, biotech, health innovation and advanced materials and manufacturing sector.

£15m has been allocated to the Sister Joint Venture to accelerate the redevelopment of the site, and £5m to The University of Manchester to support early-stage deep tech companies to grow and accelerate towards manufacturing scale-up.

SISTER AT A GLANCE



£1.7B
investment



10,000
new jobs



1,500+
new homes



2M+
square feet innovation & commercial space



400+
trees in nature-led public spaces

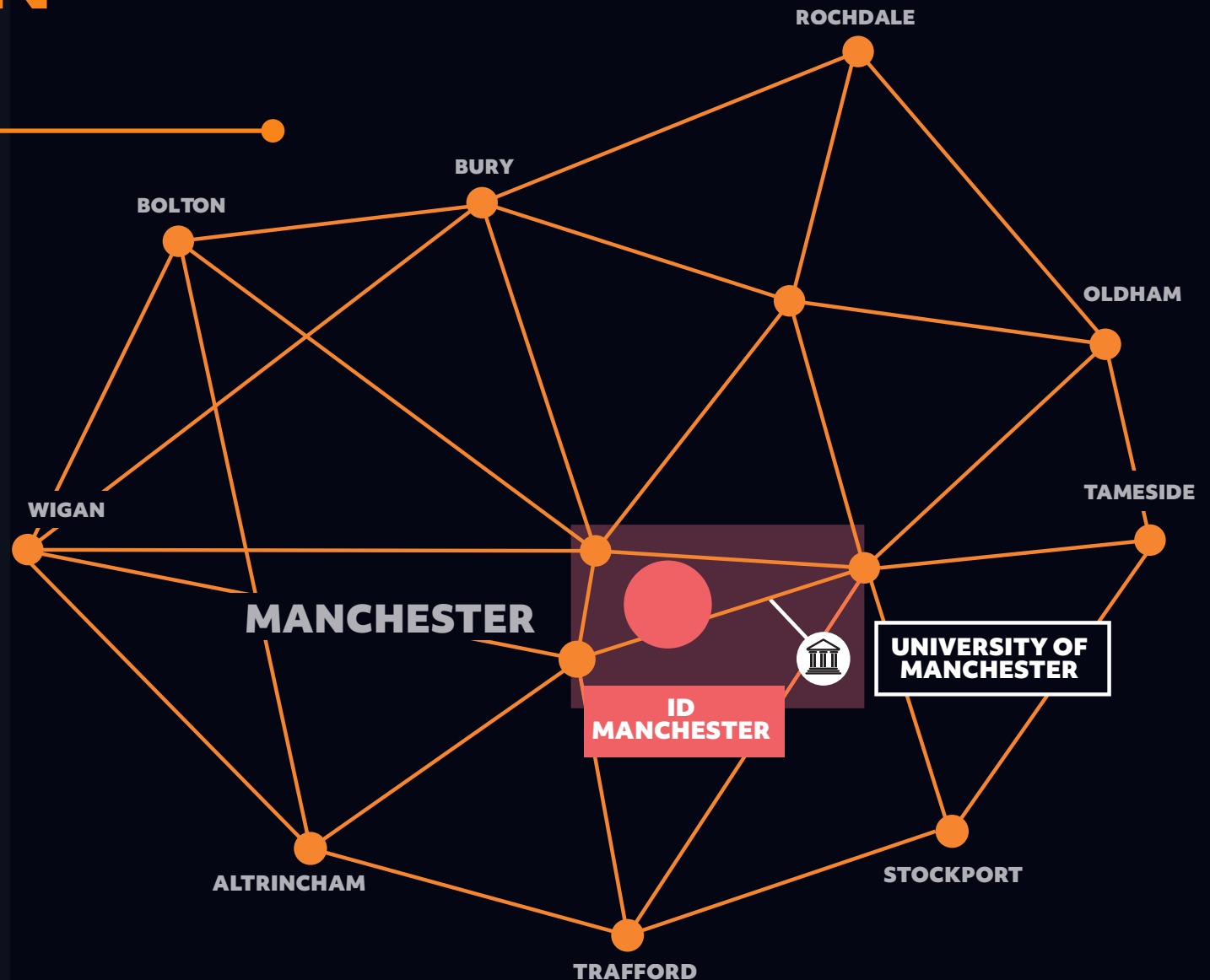


SISTER - MANCHESTER

A WORLD-LEADING INNOVATION DISTRICT

Sister's focus will be building high productivity clusters in frontier sectors aligned to local and national priorities, playing a significant role in the UK Government's net zero, levelling up, and science superpower missions. It will create a commercially-led innovation ecosystem.

By providing a platform to accelerate growth, partnership and collaboration, Sister will establish itself as the place where the world's most valuable ideas are transformed into reality. It will play a pivotal role in delivering competitiveness and prosperity to the city-region and UK.



INNOVATIVE SPACES

Sister will transform The University of Manchester's former North campus – recognised for its world class skills, research, and development and once home to the historic University of Manchester Institute of Science and Technology (UMIST) - into a vibrant new city centre neighbourhood.

The Strategic Regeneration Framework for Sister was approved by Manchester City Council in December 2023 and sets out the vision, objectives and design principles that will guide the future development of the site.

A 15-to-20-year project, Sister will be delivered in phases, with the first building, the Renold Building, being reactivated in 2024. Renold will become an innovation hub, hosting the next wave of science and technology innovators, and providing a range of coworking, office and meeting facilities to accommodate and support collaboration between researchers, entrepreneurs, businesses, and partner organisations. The innovation hub will provide wrap-around support to help scale and grow businesses within the community.



THE ICONIC RENOLD BUILDING



CONNECTING BUSINESS TO RESEARCH

Sister is a progressive partnership which combines world-class research and innovation expertise with the UK's largest property platform.

THE UNIVERSITY OF MANCHESTER

The University of Manchester is recognised globally for its pioneering research, outstanding teaching and learning, and commitment to social responsibility. Ranked the 6th best university in the UK and 32nd in the world, the University collaborates across disciplines and industries with a broad spectrum of international blue chips, ambitious SMEs, and pioneering institutions.

BRUNTWOOD SCITECH

Bruntwood SciTech, a Joint Venture between Bruntwood, Legal & General and Greater Manchester Pension Fund, is the country's leading developer of city-wide centres of innovation. With unique experience of working in strategic partnership with universities, city councils and NHS trusts, Bruntwood SciTech provides premium office and lab space, a range of scientific services and specialist business support to help science and technology companies to form, scale and grow.

"The Oxford Road corridor and its environs has been central to Manchester's innovative spirit for generations – a globally recognised hub for education, innovation, and research. The ethos behind Sister continues that tradition, creating opportunities for the city's emerging specialist sectors in health, advanced materials, and biotech to develop and grow."

"We welcome this level of ambition to diversify and grow our economy - while creating thousands of new jobs alongside pathways to learning and apprenticeships for Manchester people to realise their potential, sharing in the success of the city"



CLLR BEV CRAIG

**LEADER OF MANCHESTER
CITY COUNCIL**

SUPPORTING THE INNOVATION ECOSYSTEM

A range of support options are available to businesses working within the advanced materials and manufacturing sector who may be looking to expand in Greater Manchester:

NEW RESEARCH AND INNOVATION PROGRAMMES

ACOUSTICS INNOVATION INSTITUTE

The University of Salford's Acoustics Innovation Institute will provide a unique sound and vibration facility, where academia and industry can collaborate to assess and improve new materials and manufactured products.

THE NORTH OF ENGLAND ROBOTICS INNOVATION CENTRE (NERIC)

NERIC at the University of Salford offers a one-stop shop for developing and applying robotics and automation in businesses of all sizes, with funding support available to SMEs. Through the Investment Zone programme, NERIC will deliver a programme of collaborative ventures with businesses on research, upskilling, and a comprehensive workshop with advanced robotic devices and facilities.

ADVANCED MATERIALS AND

MANUFACTURING INNOVATION CENTRE (AMMIC)

Manchester Metropolitan University will build on its research and innovation strengths by establishing AMMIC to transfer additive manufacturing and advanced materials Innovations to businesses in Greater Manchester. AMMIC will provide an opportunity for manufacturing businesses to test, prototype and drive forward new innovations, support collaborative research and development projects, develop technical and soft skills, and build leadership and change management abilities. The Centre for Enterprise and PrintCity at the University have a strong track record on delivering innovation programmes with real world impact.

BRINGING FORWARD EMPLOYMENT LAND

The Investment Zone programme will support the development of sites in Tameside for advanced materials and manufacturing: Ashton Moss and Future St Petersfield. Well placed in one of Greater Manchester's most active manufacturing clusters and well connected to the city centre, these sites

BUSINESS SUPPORT

FUNDING: GM ADVANCE

GMCA can support companies through tailored funding initiatives such as [GM Advance](#), to general growth funding available for investing into businesses and infrastructure.

GM Advance is a £10m advanced materials and manufacturing Investment Fund which continues development of the city-region's thriving innovation ecosystem. The fund is open for companies ranging from new startups to small and medium enterprises. To be eligible for this subsidised funding, applicants need to be based in Greater Manchester or have tangible plans to relocate or expand operations into the region.

Click to learn about [funding options available](#) and contact [GMCA](#) or [Business Growth Hub](#).

TARGETED BUSINESS GROWTH PROGRAMMES

The Greater Manchester Business Growth Hub is a community of specialists with a passion for supporting businesses with funding, innovation, people, sales and sustainability, of all sizes and sectors, from self-employed to large enterprise, to realise their full potential. Greater Manchester's Inward Investment Agency (MIDAS) are a fountain of knowledge for companies looking to expand into the region; and Made Smarter can help businesses take the next steps in their digital manufacturing journey. [Get in touch](#).

SKILLS

CENTRE FOR ADVANCED MANUFACTURING SKILLS ACADEMY (CFAM)

CfAM at the University of Bolton will provide advanced manufacturing demonstration facilities where learners from across Greater Manchester, as well as local and regional industry can develop further technical skills, develop applied research and knowledge exchange capabilities, and work with green technologies.

NEW SKILLS PROGRAMMES FOR ALL AGES

Skills and training programmes to support residents of all ages to access careers in manufacturing and materials. Working with schools and Further Education colleges in Greater Manchester to tailor training to business needs, building on existing expertise in our strong technical education provider base.

PLANNING AND DEVELOPMENT

Investment in Greater Manchester's planning system, helping to progress major manufacturing developments at speed.

PLANNING AND SUSTAINABILITY

Greater Manchester's Investment Zone builds on plans to create a sustainable and thriving city-region.

SPACE TO BUILD

Greater Manchester has a clear plan for future development, part of a commitment to driving the right kind of growth, nurturing key sectors, and creating opportunities all residents can take advantage of.

The region has created a Development Framework 'Places for Everyone' that covers the next 10 – 15 years, generating quality jobs, new homes, and sustainable growth. The plan outlines a vision and strategic plan for development partners in nine of the ten boroughs [[see map for details](#)].



MIKE BLACKBURN OBE

**CHAIR OF THE GROWTH
COMPANY**

It defines the kind of development that should take place by allocating specific sites for employment, housing, and green spaces, to create ready-made investment opportunities for developers with a shared vision.

By identifying the amount of new development coming forward and encouraging the delivery of key infrastructure and transport to support it, the investment will serve local communities by creating high quality jobs in key sectors, develop thriving neighbourhoods, and improve connection to opportunities, enhancing the entire region's growth potential.

"During my 25 years at BT, I worked with businesses and the public sector across Greater Manchester, and found an amazing sense of common purpose and inspiring ambition."



CASTLEFIELD VIADUCT - MANCHESTER

CARBON NEUTRAL 2038

Greater Manchester is working towards a science-based target to become a carbon neutral city-region by 2038, twelve years ahead of the UK government's target.

With a clearly defined 5-year environment plan, Greater Manchester is adopting a clear and ambitious approach to climate action covering transport and travel, homes, workplaces, public buildings energy supply, and the natural environment.

Initiatives like local area energy plans support each borough in the transition to carbon neutrality while boroughs are prioritising creating new green spaces to maximise biodiversity.

The Bee Network, an integrated transport system incorporating public transport and active travel is transforming the way people move around the region and promoting more sustainable methods of transport.

Greater Manchester is also pioneering green innovation and research. The Energy Innovation Agency, Energy House 2.0 and Atom Valley's Centre of Expertise in Advanced Materials and Sustainability (CEAMS), support the commercialisation of net-zero technologies and innovation, and commercialise sustainable material(s) with the aim to make the materials used sustainable.

GET IN TOUCH

Considering Greater Manchester for your business' new home? Contact us today.

I'M A BUSINESS, LOOKING TO LEARN MORE ABOUT THE OPPORTUNITIES AVAILABLE IN GREATER MANCHESTER:

GMCA

Greater Manchester Combined Authority

The Greater Manchester Combined Authority (GMCA) is made up of the ten Greater Manchester councils and Mayor who work with other local services, businesses, communities, and other partners to improve the city-region.

The ten councils (Bolton, Bury, Manchester, Oldham, Rochdale, Salford, Stockport, Tameside, Trafford, and Wigan) have worked together voluntarily on issues that affect everyone in the region, like transport, regeneration, and attracting investment.

GMCA are now leading the way in devolved powers, including around transport and skills which provide significant opportunities for businesses to work collaboratively with the city-region around site connectivity and access to talent to ensure the site has maximum impact.

Get in touch

I'M A GLOBAL BUSINESS, LOOKING TO LOCATE IN THE UK, CONSIDERING GREATER MANCHESTER:

MIDAS, the city-region's award-winning inward investment agency provides an extensive package of complimentary advice and assistance in expanding or relocating to the city-region.

With dedicated business development specialists across Greater Manchester's core sectors, the team offers a wealth of experience, ensuring the provision of invaluable insights, knowledge, and contacts.

Get in touch | info@midas.org.uk

I'M A UK BUSINESS LOOKING TO MOVE TO GREATER MANCHESTER:

To apply for funding through GM Advance, Application forms can be found at: greatermanchester-ca.gov.uk/what-we-do/investment and should be submitted to gadvance@greatermanchester-ca.gov.uk with GM Advance - [Project Name] as the subject title.

To learn more about the other funding options available to businesses, visit businessgrowthhub.com or contact bgh@growthco.uk | 0161 359 3050



Funded by
UK Government



A CONNECTED CITY-REGION